

Another model of cell polarity : the outgrowing fungal spore

Autor(en): **Turian, Gilbert**

Objektyp: **Article**

Zeitschrift: **Archives des sciences et compte rendu des séances de la Société**

Band (Jahr): **38 (1985)**

Heft 3

PDF erstellt am: **22.07.2024**

Persistenter Link: <https://doi.org/10.5169/seals-740490>

Nutzungsbedingungen

Die ETH-Bibliothek ist Anbieterin der digitalisierten Zeitschriften. Sie besitzt keine Urheberrechte an den Inhalten der Zeitschriften. Die Rechte liegen in der Regel bei den Herausgebern.

Die auf der Plattform e-periodica veröffentlichten Dokumente stehen für nicht-kommerzielle Zwecke in Lehre und Forschung sowie für die private Nutzung frei zur Verfügung. Einzelne Dateien oder Ausdrucke aus diesem Angebot können zusammen mit diesen Nutzungsbedingungen und den korrekten Herkunftsbezeichnungen weitergegeben werden.

Das Veröffentlichen von Bildern in Print- und Online-Publikationen ist nur mit vorheriger Genehmigung der Rechteinhaber erlaubt. Die systematische Speicherung von Teilen des elektronischen Angebots auf anderen Servern bedarf ebenfalls des schriftlichen Einverständnisses der Rechteinhaber.

Haftungsausschluss

Alle Angaben erfolgen ohne Gewähr für Vollständigkeit oder Richtigkeit. Es wird keine Haftung übernommen für Schäden durch die Verwendung von Informationen aus diesem Online-Angebot oder durch das Fehlen von Informationen. Dies gilt auch für Inhalte Dritter, die über dieses Angebot zugänglich sind.

Arch. Sc. Genève	Vol. 38	Fasc. 3	pp. 419-426	1985
------------------	---------	---------	-------------	------

ANOTHER MODEL OF CELL POLARITY: THE OUTGROWING FUNGAL SPORE

BY

Gilbert TURIAN¹

KEYWORDS: Polarity, fungal spore, *Neurospora*, apical acidification

ABSTRACT

Polar patterns of a few fungal types are presented comparatively to polarity of hydra. Growth at germination of *Allomyces* species is bipolar as budding in the polyp. According to our simpler model of monopolar germination from conidia of *Neurospora crassa*, axial polarity would be initiated by vectorial extrusion of H⁺ ions from a few mitochondria positioned toward the thereby elected plasmalemma site of outgrowth. The ensuing localized acidification would initiate a train of ionic exchanges and vectorial transports (acidic proteins, vesicles) leading to germ tube elongation.

RÉSUMÉ

Les types de polarité de quelques champignons ont été présentés par comparaison avec celle de l'Hydre. La croissance à la germination des espèces d'*Allomyces* est bipolaire comme celle du polype. Selon notre modèle plus simple de germination monopolaire de la conidie de *Neurospora crassa*, la polarité axiale serait induite par extrusion vectorielle d'ions H⁺ à partir de quelques mitochondries positionnées contre le site plasmalemme ainsi élu pour l'émergence. L'acidification localisée en découlant mettrait en marche une chaîne d'échanges ioniques et de transports vectoriels (protéines acides, vésicules) conduisant à l'élongation du tube germinatif.

¹ Laboratoire de Microbiologie générale, Université de Genève, 3, place de l'Université, 1211 Genève 4.

The polarity of hydra, well-known since the celebrated Trembley's regeneration experiments, has its prototypic counterparts in lower eucaryotic organisms such as the Algae (Nuccitelli, 1983) and the Fungi (Harold, 1982; Turian, 1983a). These last present a whole array of polar patterns (Figure 1) spanning from the monopolar budding of a simple yeast such as *Saccharomyces cerevisiae* to monopolar outgrowth of a germ tube from conidia of *Neurospora crassa* or, more primitively, a rhizoid from the subspherical thallus of the water mold *Blastocladiella emersonii*. The bipolar pattern is reached with germinating zoospores of the more evolved water molds of the genus *Allomyces*: first a rhizoid emerges from a pole apparently predetermined by the flagellum site on the zoospore (Turian, 1962) and, second (around 1 h later) at the opposite pole, the hyphal tube elongating at 180° of the rhizoid and soon regularly dichotomizing into a tufted mycelium (Figure 2).

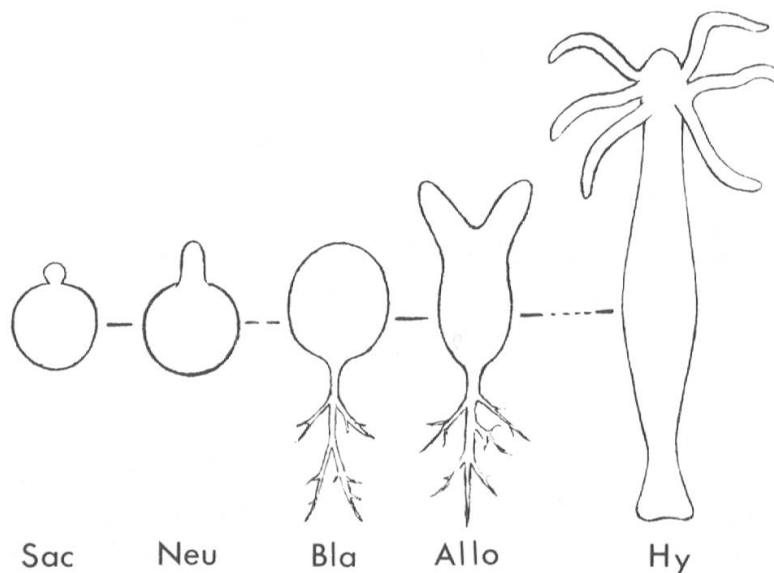


FIG. 1. — Comparative polar pattern from germinating fungal spores to growing Hydra (Hy): unipolar budding in *Saccharomyces cerevisiae* (Sac), unipolar outgrowing conidium of *Neurospora crassa* (Neu), unipolar rhizoid outgrowth from *Blastocladiella emersonii* (Bla) zoospore, bipolar axial rhizoid—hypha outgrowths from *Allomyces arbuscula* (Allo) zoospore.

Size scale of the longest fungus (*Allomyces* \cong 25 μ) compared to the polyp equals 1 to 50.

The site of polar budding on mother yeast cells has been variously considered to be predetermined by vectorial “bombardment” of its wall by cytoplasmic granules (Falcone and Nickerson, 1958) or endomembranar vesicles (Moor, 1967), frontal pre-orientation of the spindle polar body preparing first mitotic division (Byers and Goetsch, 1975) or positioning of actin dots below the emergence site (Kilmartin and Adams, 1984). Our contribution has been the detection, with fluorescent probes, of an early acidification in the outgrowing yeast bud (Turian, 1981).

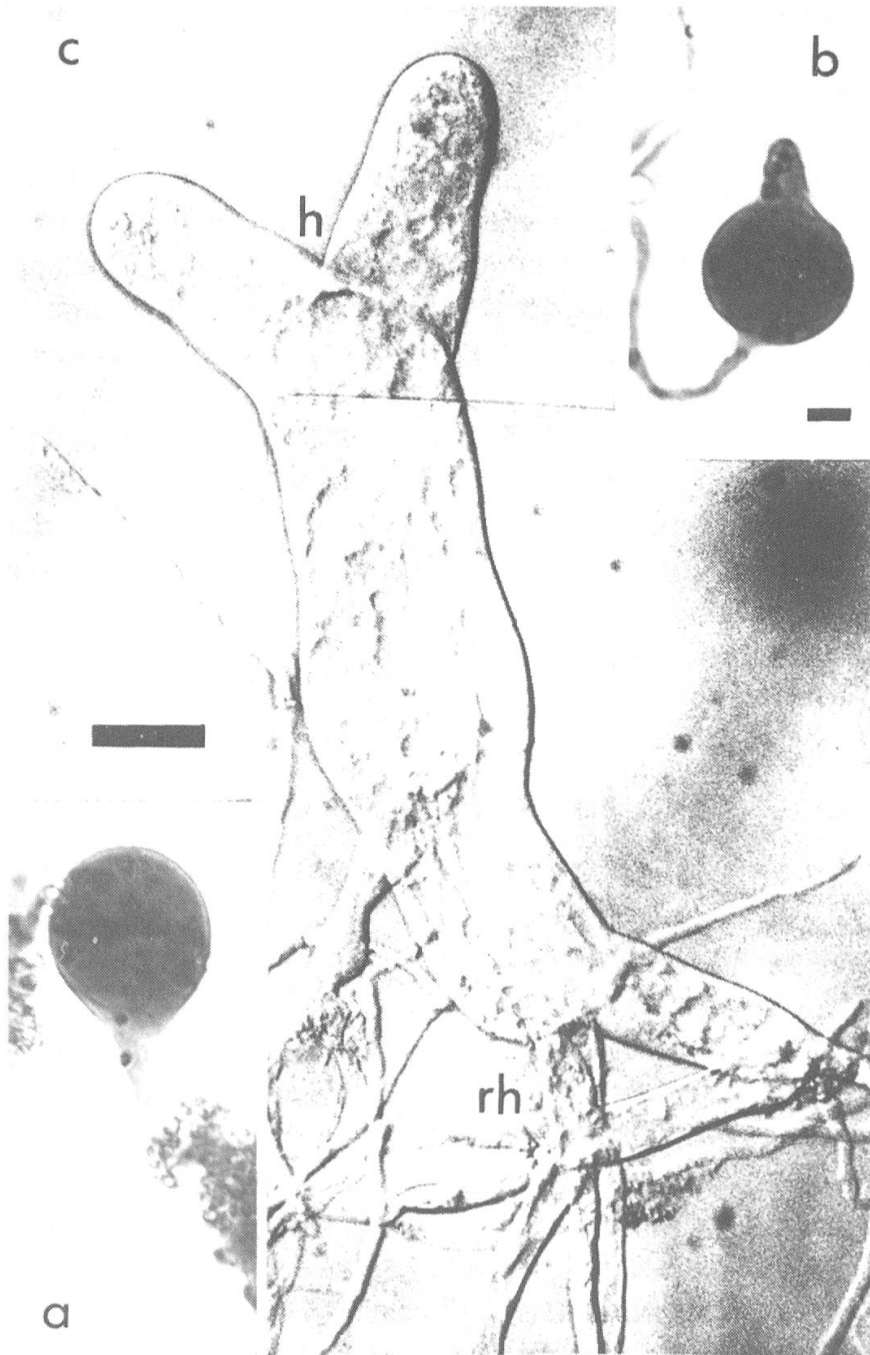


FIG. 2. — A bipolarly axiated germling of *Allomyces arbuscula* photographed on a Nomarski equipped Olympus microscope.

Note the young hyphae (h) dichotomously expanding from the apical pole of the main mycelial "trunk", itself issued by enlargement of the initially germinated zoospore having first (a) outgrown the basal rhizoidal system (rh). Bar = 10 μ .

Our main effort to understand the establishment of a polar axis at fungal spore germination has been centered on *Neurospora* conidia. As in all other spores of Ascomycetes and Fungi imperfecti, the germination process includes three main stages: (1) the "dry" stage covering the dormancy (ascospores) or semi-dormancy (conidia) period; (2) the "wet" stage initiating "swelling" or isotropic growth of the spore; (3) the outgrowth or emergence stage expressing the polarity of growth which continues with apical elongation of the hyphal tube.

During the early isometric growth phase, the organelles are homogeneously distributed in the cytoplasm. Internal partition of these constituents intervenes only later at the stage involving clustering of mitochondria at a pole opposite to the vacuoles-enriched one (Turian, 1985). Such polar clustering of mitochondria appears to be a prerequisite to the second, more decisive event, the temporary contact of a few of such mitochondria with a localized portion of the plasma membrane (Turian and Geissler, 1984), electing by that presumably electrically-depolarizing event, the prospective site of germ tube outgrowth. This site is differentially acidified (Turian, 1981, 1983a, 1983b) and known to be progressively filled with vesicles fusing with the apically expanding plasma membrane (Gooday, 1983) and insuring by their provision of wall material the elongation rate of the hyphal tip. The differential acidification of the prospective site of germ tube outgrowth has been ascribed to the vectorial ejection of protons from frontal mitochondria toward a cytosolic sink (Turian, 1980).

PROTON SINK THEORY FOR THE OUTGROWTH OF THE GERM TUBE

As proton sink, we had suggested a process of ionic exchange such as H^+/K^+ at the plasmalemma site facing these mitochondria (Turian, 1983c). K^+ ions are effectively required for germ tube outgrowth (Turian *et al.*, 1984) but their requirement appears to be related to an early exchange with protons extruded from the initially relatively acidic semi-dormant conidia to insure the relative alkalisation of the cytoplasm compatible with DNA synthesis and first mitosis at germination. Such initially ejected protons could then be reintruded in symport with glucose and/or aminoacids into the expanding germ tube while peripherally increasing the pH of the surrounding medium as recently measured with a vibrating electrode (Kropf *et al.*, 1984). Such protons reintrusion would reinforce the apical acidity initiated by the vectorial ejection of protons from the frontal mitochondria (Figure 3). Part of the apical acid charge might concentrate into the vesicles migrating to the hyphal tip, some at least being suspected to function therefore as chromaffin vesicles in a process which should involve the functioning of membrane H^+ -ATPase consuming mainly glycolytically-produced ATP since frontal mitochondria are suspected to be partially uncoupled (Turian and Michéa-Hamzhepour, 1983). Apical vesicles could therefore act as sink

for protons on their vectorial move to the germ pole. As in germ tubes of the alga *Fucus* (Quatrano *et al.*, 1978), arising vesicles are probably negatively-charged by their load of wall polysaccharidic precursors. Therefore, they could attract, on their way from the endoplasmic reticulum to the tip, the protons ejected from the frontal mitochondria (Figure 3) as well as being attracted to the electropositively-charged outgrowing tube.

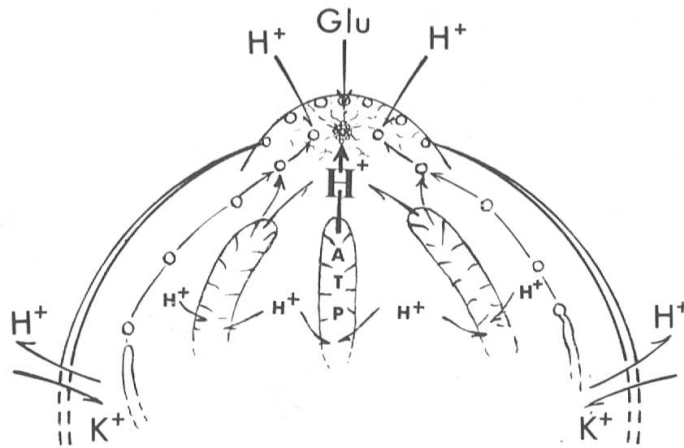


FIG. 3. — Diagrammatic sketch of the partially hypothetical, sequential polar process of germ tube outgrowth from a *Neurospora* conidium. Initial endogenous vectorial flush of protons (H^+) from the frontal mitochondria progressively retreating from the electrically depolarized site of the outgrowing germ tube. Apical proton sink self-amplified by migration of negatively-charged vesicles attracts exogenous protons cotransported with glucose (Glu) according to Harold's report. Such protons should be available following their outward exchange with K^+ ions previously intruded to deacidify the cytoplasm of the conidium from its isometric "swelling" stage on. Contrarily to the uncoupling state of the mitochondrial frontal zones, basal areas could reintrude protons to replenish the ATP pool by chemiosmotic oxidative phosphorylation. ATP is requested for further energized extrusion of H^+ into the apical dome. ATPase-mediated protons sequestration into exocytotic vesicles would provide the necessary apical sink for protons vectorially conducted by actin "cables" of the microfibrillar network.

The cytosol progressively sorted out at the tip should be gelified (cytogel) by the ensuing local acidification as known in the ectoplasm of myxamoebae (Condeelis and Taylor, 1977). We had suspected (Turian, 1979) that this apical gelification might be related to changes in the organisation of the meshwork of actin microfibrils which have since been cytochemically detected in budding yeasts (Adams and Pringle, 1984) and fungi (Hoch and Staples, 1983; Ton-That and Turian, 1983). The extension of the gelified microfibrillar network would progressively push-back the frontal mitochondria, leaving at the ultimate tip a restrictive or exclusion zone of cytogel accepting only the several types of vesicles among which the micro-type aggregated into the "Spitzenkörper". Microfilaments of actin could themselves be electrically polarized in the axis of the apical acid gradient and, in their interaction with vesicles, might contribute to their electrophoretic transport toward the outgrowing tip.

In the sequential morphogenesis of the fungal germ tube we could thus consider that, complementary to the initial asymmetric turgor pressure, clustering the mitochondria to the prospective outgrowing pole (Turian, 1985), the interaction microfibrils-vesicles along the pH gradient would provide the electro-mechanical driving force for the polarized traffic of the wall-building material toward the germ tube transformed into a continuously elongating hyphal tip.

Polarized growth is, however, not only sustained by apically-driven traffic of wall and plasmalemma vesicles but, more quantitatively, by a continuous supply at that hyphal tip site of cytosolic and enzymatic proteins. The driving force of such a transport depends upon the accumulation of H^+ ions in the tip of the germ tube which provides there a positive charge by contrast with the basal portion of the germinative spore; the accompanying transcellular ion currents should generate an intracellular, apico-basal voltage gradient in the germling. In the exclusive zone of the tip, above

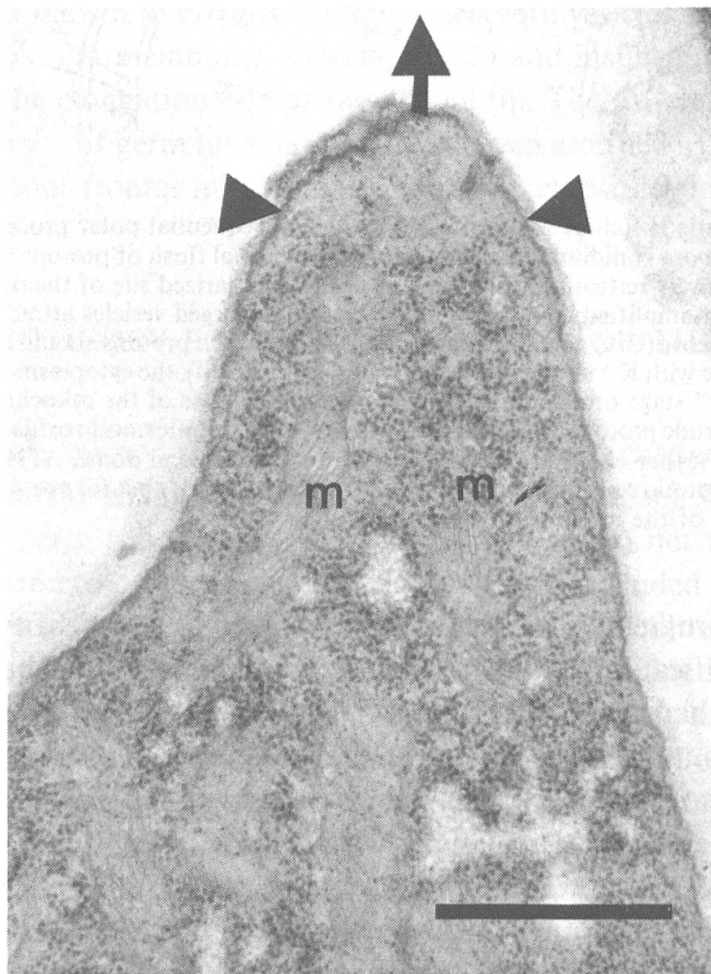


FIG. 4. — Longitudinal section of a germ tube outgrowing (arrow) from a conidium of *Neurospora crassa*. The ribosomes are excluded from the cytosolic ultimate tip observed to be the most acidic by fluorescence quenching of acridine orange.

Mitochondria (m) in subapical position. Fixation in glutaraldehyde-osmic acid. Bar = 1 μ m.

the frontal mitochondria, that voltage gradient could be involved in the polarized apical transport of proteins released from the free ribosomes immobilized on the subtip front of the hyphal apex (Figure 4).

The reason of such exclusion phenomenon could be found in the known fact that ribosomes having their protein component rich in basic aminoacids and conferring them a high pI, they should have a higher amount of positive charges in the acidic apical environment (fluorometric probing of pH ~ 5.5, see Turian 1983b) and therefore would tend to be repelled from that most acidic—anodic—ultimate tip. Oppositely, the mainly acid, electro-negative proteins and enzymes (low pI such as invertase, calmodulin, actomyosin, etc.) presumed to be produced on the free ribosomes of that subtip region would be vectorially discharged toward the tip by a process akin to “bioelectrofocusing”, thereby insuring the constant sorting out of fresh apical cytosol required for the continuous hyphal elongation. In such acidified conditions, that cytosol should be gelified (Turian, 1979) into some type of “ectoplasmic cap” imprisoning among its actomyosinic, fibrillar network the apical vesicles sequestering H⁺ ions (proton sink, Turian, 1983c) and wall precursors.

Fundamentally it then appears that it is the maintenance of the apical endo- and exogenous proton provision which would insure, by further electrically-controlled asymmetrical release of newly formed proteins, the continuous polarized hyphal growth.

We are grateful to the organizers of the symposium for the opportunity to compare our views on fungal polarity with those on hydra in a “témoignage d'admiration pour notre grand ancêtre intellectuel genevois, Abraham Trembley”. We thank Dr. M. Ojha and Dr. T. C. Ton-That for the photomicrographs of *Allomyces* and *Neurospora* respectively.

REFERENCES

- ADAMS, A. E. M. and J. R. PRINGLE (1984). Relationship of actin and tubulin distribution to bud growth in wild-type and morphogenetic-mutant *Saccharomyces cerevisiae*. *J. Cell Biol.* 98, 934-945.
- BYERS, B. and L. GOETSCH (1975). Behaviour of spindles and spindle plaques in the cell cycle and conjugation of *Saccharomyces cerevisiae*. *J. Bacteriol.* 124, 511-523.
- CONDEELIS, J. S. and D. L. TAYLOR (1977). The control of gelation, solation and contraction in extracts from *Dictyostelium discoideum*. *J. Cell Biol.* 74, 901-927.
- FALCONE, G. and W. J. NICKERSON (1958). Enzymatic reactions involved in cellular division of microorganisms. Symposium VI, pp. 65-70. *In* Biochemistry of morphogenesis (Proceed. 4th intern. cong. Biochem. Vienna). W. J. Nickerson (ed.). Pergamon Press, London, New York.
- GOODAY, G. W. (1983). The fungal tip. *In* Fungal differentiation. A contemporary synthesis. J. E. Smith (ed.). Marcel Dekker, Inc. New York and Basel, pp. 315-356.
- HAROLD, F. M. (1982). Pumps and currents: A biological perspective. *Curr. Top. Membr. Transp.* 26, 485-516.
- HOCH, H. C. and R. C. STAPLES (1983). Visualization of actin in situ by rhodamine-conjugated phalloin in the fungus *Uromyces phaseoli*. *European J. Cell Biol.* 32, 52-58.

- KILMARTIN, J. V. and A. E. M. ADAMS (1984). Structural rearrangements of tubulin and actin during the cell cycle of the yeast *Saccharomyces*. *J. Cell Biol.* 98, 922-933.
- KROPF, D. L., J. H. CALDWELL, N. A. R. GOW and F. M. HAROLD (1984). Symport of protons with amino acids carries transcellular current into hyphal tips. *J. Cell Biol.* 99, 486-496.
- MOOR, H. (1967). Endoplasmic reticulum as the initiator of bud formation in yeast (*S. cerevisiae*). *Arch. Mikrobiol.* 57, 135-146.
- NUCCITELLI, R. (1983). Transcellular ion currents: signal and effectors of cell polarity. *Modern Cell Biol.* 2, 451-481.
- QUATRANO, R. S., S. H. BRAWLEY and W. E. HOGSET (1978). The control of the polar deposition of a sulfated polysaccharide in *Fucus* zygotes. In Determinant of spatial organization. S. Subtelny and I. R. Konigsberg (eds). Academic Press, New York, pp. 77-96.
- TON-THAT, T. C. and G. TURIAN (1983). Ultrastructural cytochemistry of growing hyphae of *Neurospora crassa*. Report Swiss National Foundation (3.181.82).
- TURIAN, G. (1962). Problèmes de différenciation chez une moisissure expérimentale, l'*Allomyces*. *Arch. Sci. (Genève)* 15, 229-258.
- (1979). Cytochemical gradients and mitochondrial exclusion in the apices of vegetative hyphae. *Experientia* 35, 1164-1166.
- (1980). Germination of conidia (*Neurospora*, *Trichoderma*): evidence of an electrogenic sink of protons mitochondrially-extruded into emerging tubes. *Ber. Schweiz. Bot. Ges.* 90, 203-212.
- (1981). Low pH in fungal bud initials. *Experientia* 37, 1278-1279.
- (1983a). Concepts of fungal differentiation. In Fungal Differentiation. A contemporary synthesis. J. E. Smith (ed). Marcel Dekker, Inc., New York and Basel, pp. 1-18.
- (1983b). Polarized acidification of germ tube outgrowth from fungal spores (*Morchella* ascospores, *Neurospora* conidia). *Bot. Helv.* 93, 27-32.
- (1983c). Biovoltaic polarization of tip growing cells: the fungal spore model. *Arch. Sci. (Genève)* 36, 501-508.
- (1985). Polarizing processes for germ tube outgrowth from monilioid fungal spores (*Neurospora* conidial model). *Proc. Indian Acad. Sci. (Plant Sci.)*, 94, 165-173.
- TURIAN, G. and C. L. GEISLER (1984). Further clues for the involvement of mitochondria in the initiation of germ tube outgrowth from fungal conidia (*Neurospora* model). *Bot. Helv.* 94, 407-410.
- TURIAN, G. and M. MICHEA-HAMZEHPUR (1983). Parallel stimulation of mitochondrial H⁺ (Mg²⁺)-ATPase and rate of germ tube outgrowth from conidia of *Neurospora crassa*. *FEMS Microbiol. Lett.* 20, 249-252.
- TURIAN, G., R. LOEFFEL and M. MICHEA-HAMZEHPUR (1984). Requirement for K⁺ at conidial germination in *Neurospora crassa*. *Bot. Helv.* 94, 301-306.