

Figures 1999

Autor(en): **[s.n.]**

Objektyp: **Appendix**

Zeitschrift: **Annual report / Swiss federal railways**

Band (Jahr): - **(1999)**

PDF erstellt am: **23.07.2024**

Nutzungsbedingungen

Die ETH-Bibliothek ist Anbieterin der digitalisierten Zeitschriften. Sie besitzt keine Urheberrechte an den Inhalten der Zeitschriften. Die Rechte liegen in der Regel bei den Herausgebern.

Die auf der Plattform e-periodica veröffentlichten Dokumente stehen für nicht-kommerzielle Zwecke in Lehre und Forschung sowie für die private Nutzung frei zur Verfügung. Einzelne Dateien oder Ausdrucke aus diesem Angebot können zusammen mit diesen Nutzungsbedingungen und den korrekten Herkunftsbezeichnungen weitergegeben werden.

Das Veröffentlichen von Bildern in Print- und Online-Publikationen ist nur mit vorheriger Genehmigung der Rechteinhaber erlaubt. Die systematische Speicherung von Teilen des elektronischen Angebots auf anderen Servern bedarf ebenfalls des schriftlichen Einverständnisses der Rechteinhaber.

Haftungsausschluss

Alle Angaben erfolgen ohne Gewähr für Vollständigkeit oder Richtigkeit. Es wird keine Haftung übernommen für Schäden durch die Verwendung von Informationen aus diesem Online-Angebot oder durch das Fehlen von Informationen. Dies gilt auch für Inhalte Dritter, die über dieses Angebot zugänglich sind.

Figures 1999

VGBahn 2003
A





V Dahlen 2203

The SBB franc	4
Finances	5
Passenger traffic	6
Goods traffic	8
Transalpine traffic Switzerland	10
Personnel	12
Operation	14
Line performances	16
Rolling stock	18
Fixed installations	20
Tariffs, investments	21
Energy	22
Railways in international comparison	23
Figures on Switzerland	25
General Abonnements and Half-Fare Cards	27
SBB as contract placing authority, business volume of station	28

Editor

General Secretariat SBB, CH-3000 Bern 65

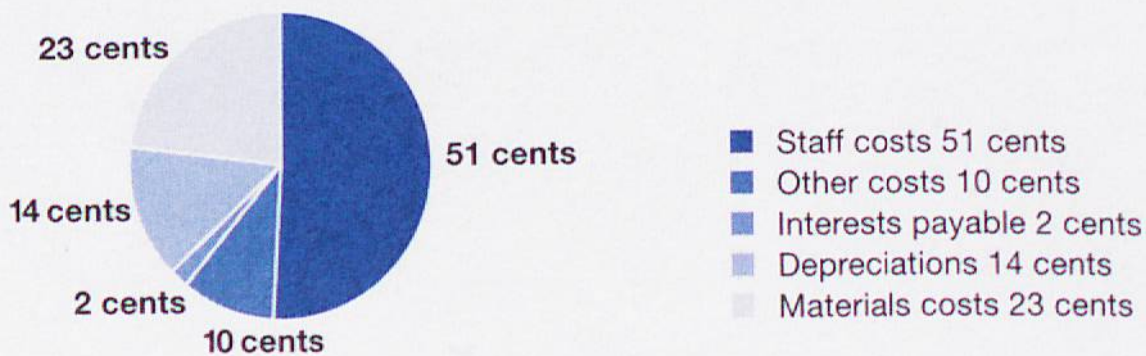
Sources (German initials)

BFS, OZD, BFE, ASB, National Bank,
OECD, UIC, Traffic police Uri, FRS, SHV

Where did the money come from in 1999?



Where did the money go in 1999?

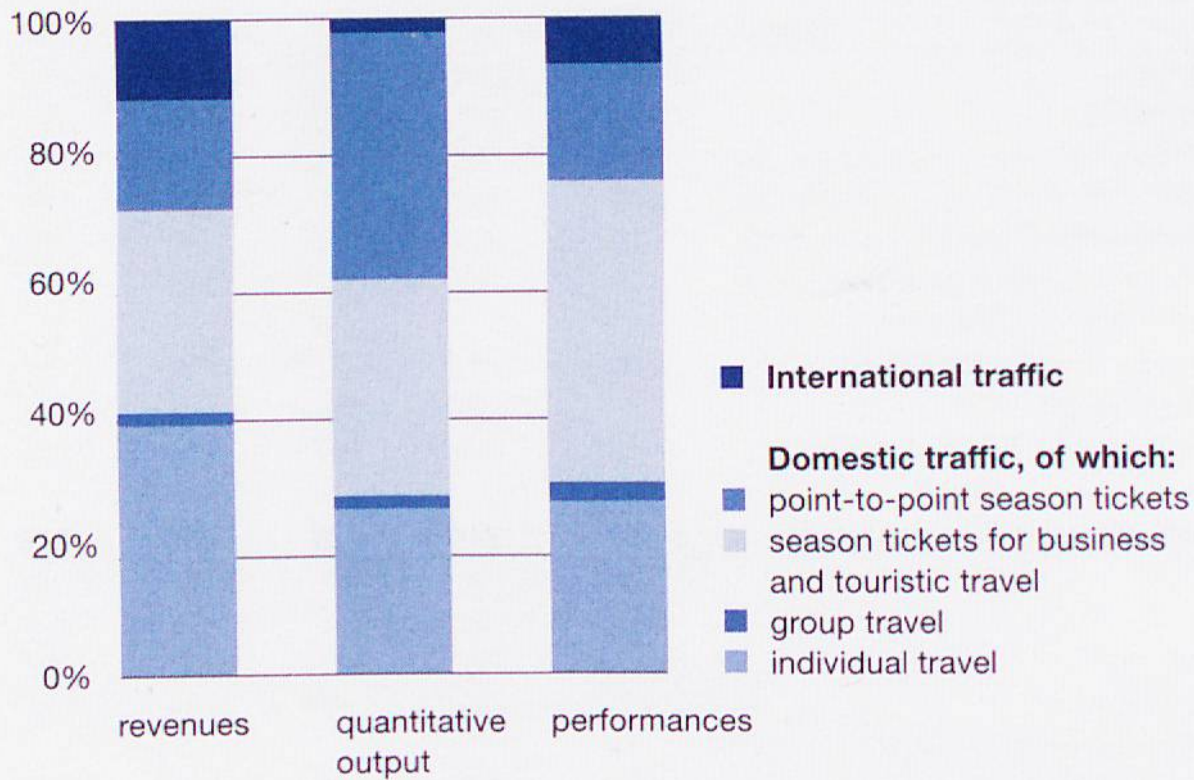


		1985	1990	1995	1998	1999
Profit and Loss Account						
Earnings ¹⁾	CHF m	3 870	5 367	6 244	6 448	5 984
Traffic earnings		3 062	3 301	3 429	3 136	3 300
– Passenger traffic		1 191	1 423	1 578	1 534	1 604
– Freight traffic		1 179	1 286	1 033	864	1 013
– PSO grants ¹⁾		604	592	818	738	683
Ancillary earnings (incl. operation services)		510	593	842	923	790
Own performances for investment account ¹⁾		140	264	311	290	299
Own performances for Alp Transit				8		
Performances for storage mandates		112	69	77	92	83
Coverment payments ¹⁾			1 090	1 450	1 805	1 273
Other earnings		46	50	127	202	239
Expenditures¹⁾		4 151	5 364	6 740	6 469	5 864
Staff		2 431	3 006	3 481	3 100	2 990
Materials		904	1 134	1 278	1 263	1 351
Depreciations		499	598	847	916	831
Interests payable		225	460	676	659	131
Major maintenance from investment mandates		85	118	286	257	304
Infrastructure contribution to Confederation ¹⁾			37			
Other expenditures		7	11	172	274	257
Surplus/deficit¹⁾		-281	3	-496	-21	120
Covering of expenditures	%	93,2	100,1	92,6	99,7	102,1
Investment Statement						
Total (gross)		1 011	1 932	1 814	1 749 ²⁾	1 881 ²⁾
– Fixed assets and installations		817	1 396	1 411	1 749	1 881
– Vehicles		194	537	369		
– Reduction of input tax VAT				34		
Contribution from third parties, various earnings		-222	-157	-107	-80	-109
Balance sheet/Statement of assets (purchase values)						
– Fixed assets and installations		9 938	11 717	15 996	20 121	19 282
– Vehicles		5 256	6 545	8 006	8 697	9 920

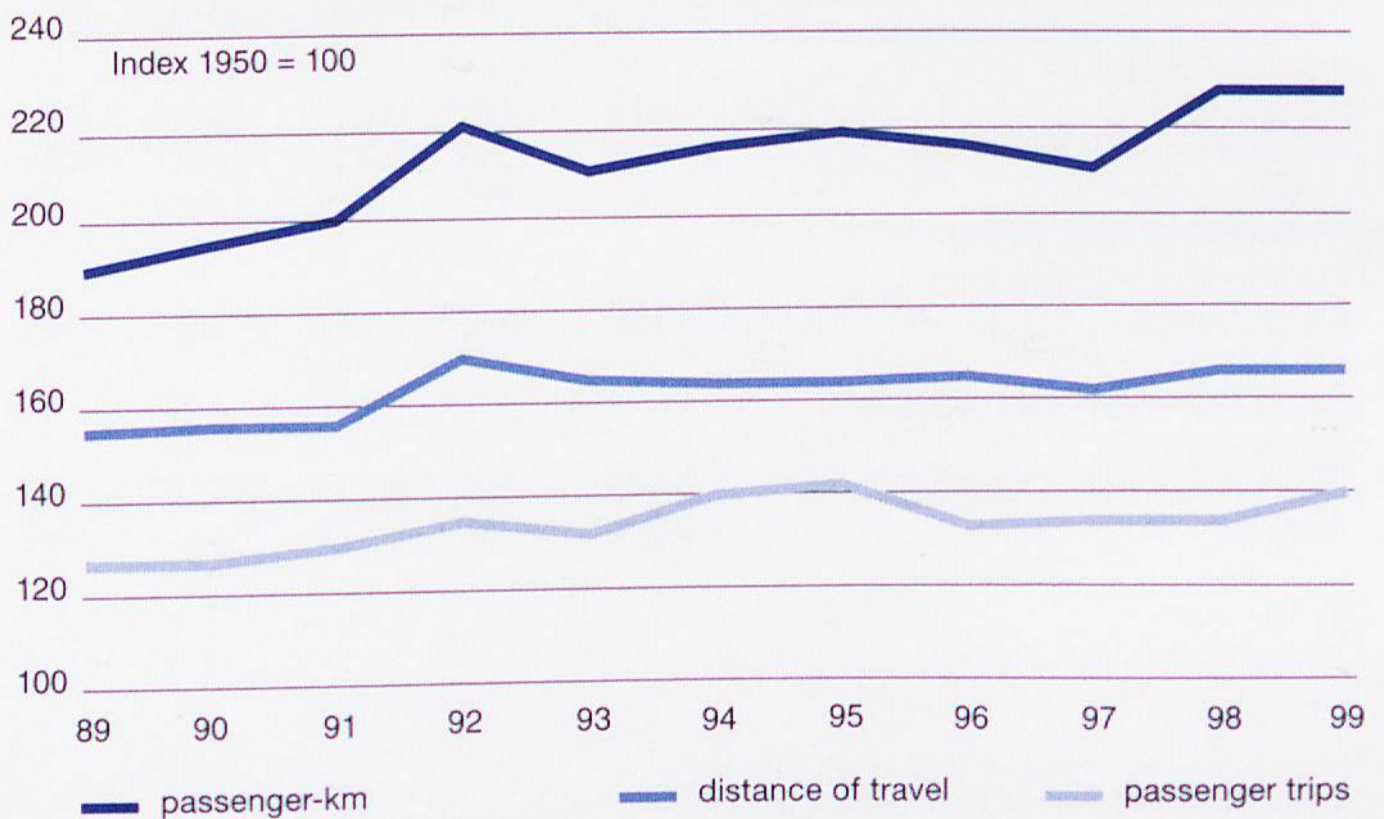
¹⁾ From 1987 new PSO mandate, comparisons of figures and indications with previous years have only limited value.

²⁾ Incl. Vehicles

Structure of passenger traffic 1999



Development of passenger traffic



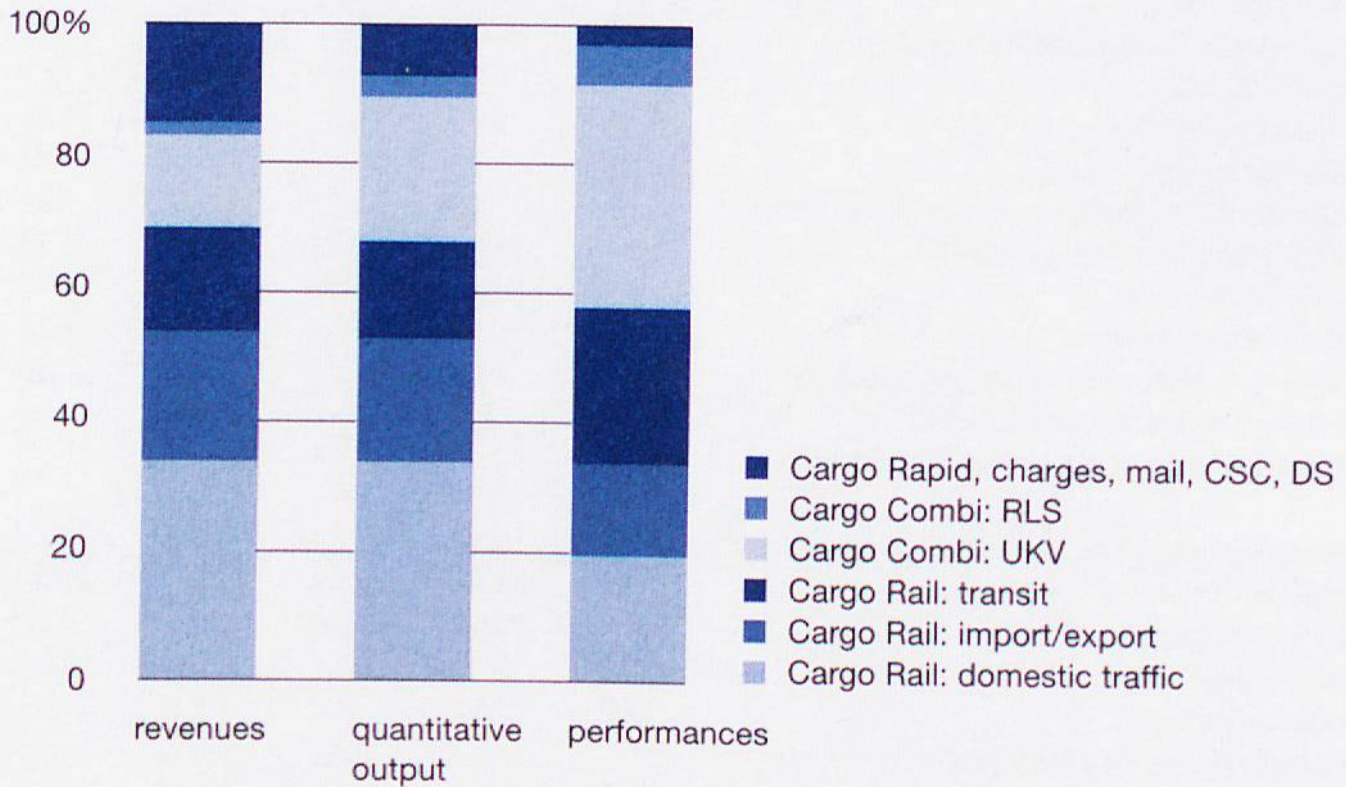
		1985	1990	1995	1998	1999
Earnings total	CHF m	1 191	1 423	1 578	1 534	1 604
Transportation of passengers¹⁾		1 166	1 392	1 547	1 513	1 581
Domestic traffic		900	1 145	1 334	1 326	1 402
- Individual travel		555	597	603	581	625
- Group travel		41	44	35	34	33
- Season tickets for business and tourist travel		120	248	437	480	498
- Point-to-point season tickets		184	210	260	254	258
- Other earnings			45	-1	-23	-12
International traffic		263	248	213	187	178
Luggage, incl. special performances¹⁾		21,5	24,1	26	20,3	22,3
Accompanied motor vehicles¹⁾		3,5	6,6	1	0,2	0,5
Shipping services Lake of Constance				4		
Quantity output total million passenger trips		197	244	254	266	276
Transportation of passengers¹⁾		197,3	244,4	253,2	266,1	275,9
Domestic traffic		187,5	236,2	246,4	260,2	270
- Individual travel		81,3	84,2	68,1	66,4	75,6
- Group travel		5,8	5,9	4,0	4,3	5,4
- Season tickets for business and tourist travel ²⁾		9,7	39,3	72,0	88,6	83,4
- Point-to-point season tickets		90,7	106,8	102,3	101,9	106,3
International traffic		9,8	8,2	6,7	5,9	5,9
Shipping services Lake of Constance				0,9		
Performances total	million pkm	8 793	11 001	11 721	12 485	12 615
Transportation of passengers¹⁾		8 793	11 001	11 711	12 485	12 615
Domestic traffic		7 200	9 514	10 637	11 606	11 778
- Individual travel		3 544	4 151	3 367	3 243	3 363
- Group travel		474	506	341	323	304
- Season tickets for business and tourist travel		1 114	2 345	4 690	5 896	5 908
- Point-to-point season tickets		2 067	2 512	2 239	2 235	2 303
International traffic		1 593	1 487	1 075	879	837
Shipping services Lake of Constance				10		
Tickets sold	1000	63 153	69 278	58 509	53 811	54 961
of which sold with ticket machines	1000	12 106	19 421	18 585	20 162	21 418
Reserved seats	1000	1 989	3 256	3 377	3 337	3 699
Special trains for firms and associations ³⁾		659	774	1 175	1 305	1 357
General Abonnements in circulation		17 700	58 738	163 943	225 700	224 027
Bicycles hired out		58 902	110 959	89 429	80 065	75 000
Mean values						
Earnings per passenger trip	cents	591	570	611	569	584
Earnings per pkm		13,3	12,7	13,2	12,1	12,6
Travel distance per person	km	44,6	45	46,3	46,9	46,2

¹⁾ From 1993 without shipping service Lake of Constance

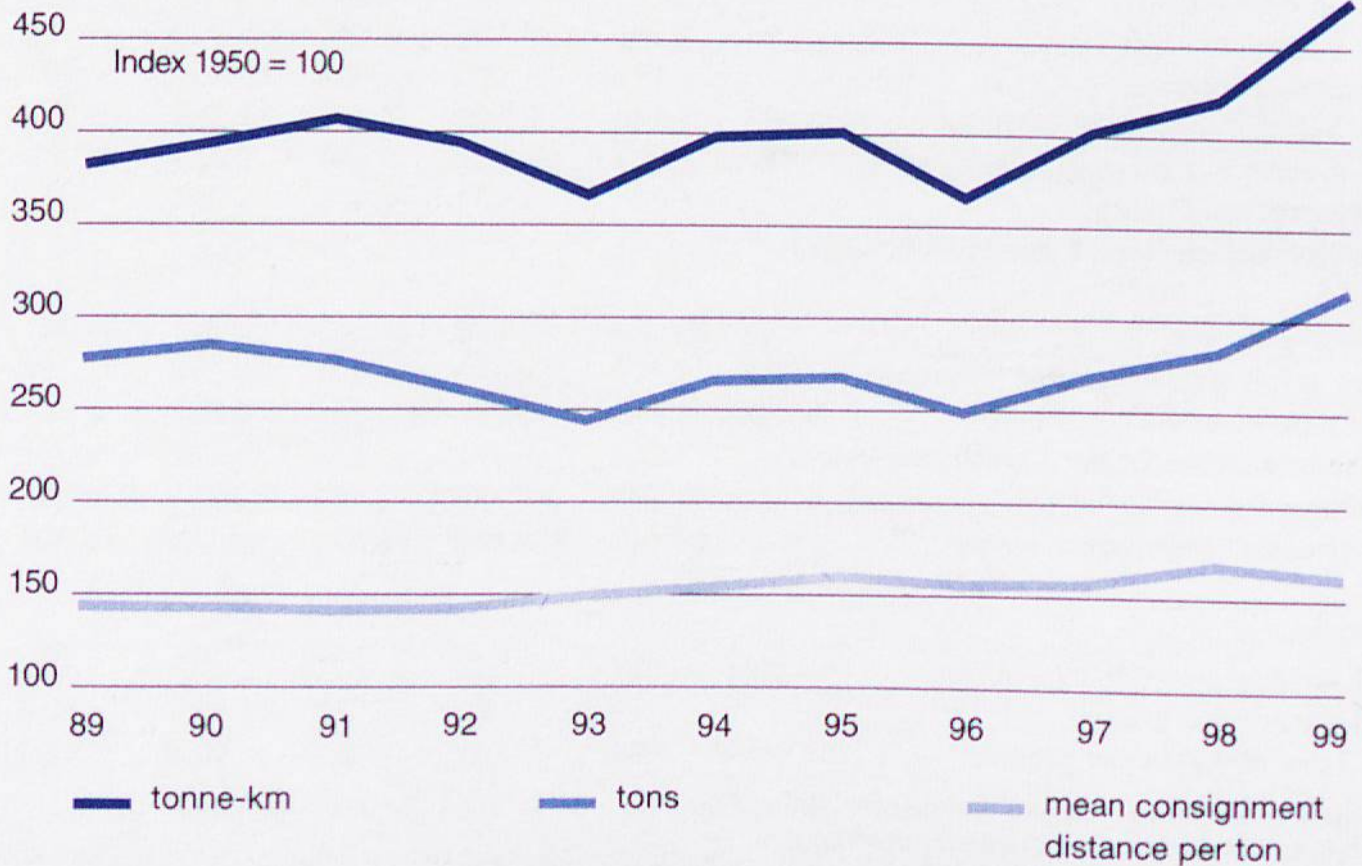
²⁾ As from 1987 inclusion of children travelling free

³⁾ As from 1986 new calculation method

Structure of goods traffic 1999



Development of goods traffic

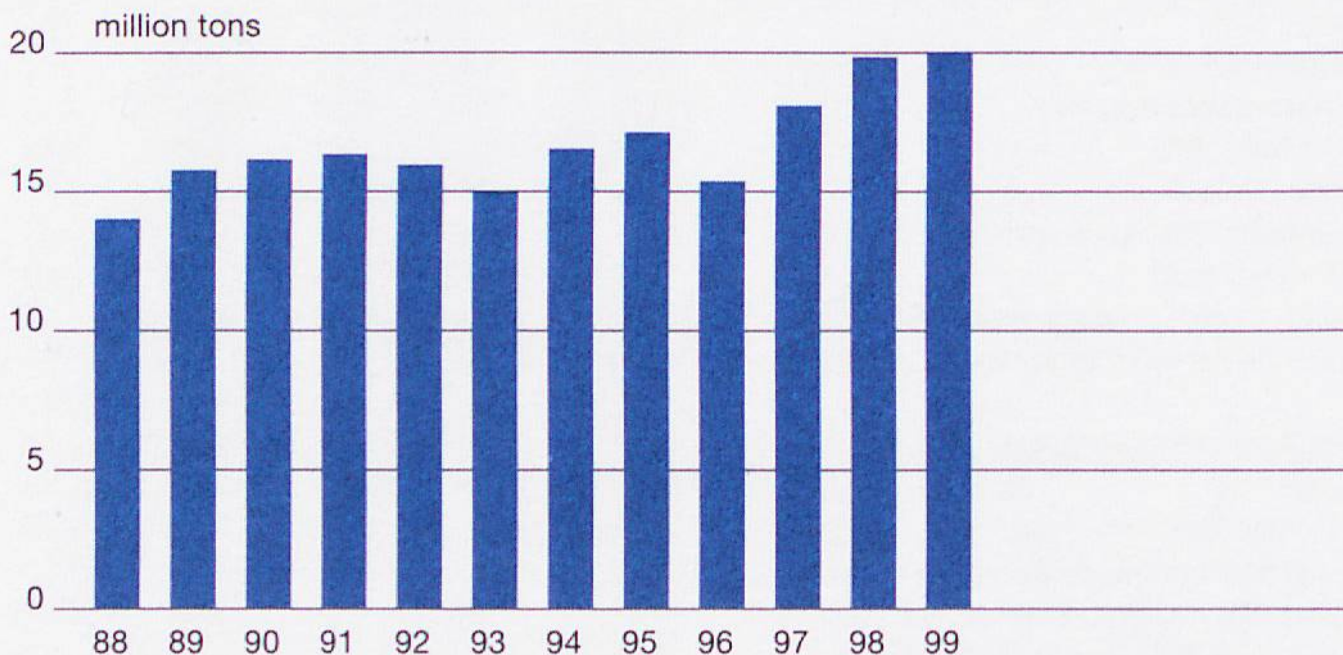


		1985	1990	1995	1998	1999
Earnings total	CHF m	1 179	1 286	1 033	864	1 013²⁾
Cargo Rail		797	857	752	634	740
- Domestic traffic		316	338	348	291	357
- Import/export traffic		283	281	239	200	215
- Transit traffic		198	238	165	143	168
Cargo Combi		59	90	95	119	177
- Unaccompanied intermodal traffic			78	83	107	155
- Rolling Road			12	11	12	22
Cargo Rapid, charges, mail, CSC		322	339	186	112	114
Earnings per ton (Cargo Rail and Combi) cents		2 516	2 385	2 097	1 699	1 726
Transported freight tons total	million tons	44,52	51,83	47,35	49,00	57,34
Cargo Rail		38,29	41,48	35,07	34,07	38,49
- Domestic traffic		17,62	18,14	15,69	14,10	19,07
- Import/export traffic		13,31	13,49	10,67	11,53	11,05
- Transit traffic		7,36	9,85	8,71	8,45	8,37
Cargo Combi		4,97	8,87	11,74	14,41	14,65
- Unaccompanied intermodal traffic			7,30	10,28	12,65	12,74
- Rolling Road			1,57	1,46	1,76	1,90
Cargo Rapid, charges, mail, CSC ¹⁾		1,27	1,47	0,54	0,51	4,20
Performances total	million tkm	7 050	8 303	8 157	8 738	9 797
Cargo Rail		5 612	5 896	5 067	4 877	5 614
- Domestic traffic		1 783	1 750	1 518	1 404	1 838
- Import/export traffic		1 638	1 552	1 329	1 299	1 401
- Transit traffic		2 191	2 593	2 220	2 174	2 375
Cargo Combi		1 282	2 231	3 030	3 803	3 858
- Unaccompanied intermodal traffic			1 750	2 570	3 262	3 283
- Rolling Road			480	459	541	575
Cargo Rapid, charges, mail, CSC ¹⁾		156	176	60	58	325
Mean transport distance per ton	km	158,3	160,2	172,3	178,3	170,9

¹⁾ 1995 outsourcing of Cargo Domizil services;
1996 outsourcing of Cargo Services Center Basel
1999 service consignments included

²⁾ decreases in revenue excluded (18 MFr)

Development of transalpine transit traffic through Switzerland on the railway



Definitions

Conventional traffic

WLW = Wagonload traffic with traditional freight wagons.

Combined traffic

UKV = The unaccompanied combined traffic is a future-oriented traffic system based on containers which can be transported on special railway wagons, on road lorries, and in part also on ships. Among them are high-volume containers, swap bodies and semi-trailers. They are transhipped by cranes.

RLS = The Rolling Road (both the driver and his lorry are travelling on the train) is an offer directed to road hauliers who have not (yet) adapted their fleet for unaccompanied combined traffic. The driver drives the whole lorry onto the train composed of low-floor wagons with continuous loading platform. The driver is accommodated in a special carriage where he can rest.

Nota bene: payloads

In combined traffic, the tare weight of the road vehicle (lorry, semi-trailer), resp. of the swap body or high-volume container is included. With wagonload traffic, only the weight of the transported goods is charged.

A presentation taking only the weight of the transported goods into account, is edited by the Federal Department for Transport and Energy «Dienst für Gesamtverkehrsfragen», under the title «Alpinfo» (GVF-News). It can be ordered by telephone 031 322 55 55, by fax 031 322 78 06).

			1990	1995	1996	1998	1999
Transalpine transit traffic as per product							
Gotthard	WLV	million tons	5,99	4,77	3,62	4,53	4,98
	UKV		4,71	6,68	6,39	9,14	9,01
	RLS		1,57	1,46	1,42	1,76	1,87
	Total		12,27	12,91	11,43	15,43	15,86
Simplon	WLV		3,07	3,39	3,10	3,40	2,68
	UKV		0,66	0,52	0,30	0,29	0,22
	Total		3,72	3,91	3,40	3,69	2,90
Total	WLV		9,06	8,16	6,72	7,93	7,66
	UKV		5,37	7,20	6,69	9,43	9,23
	RLS		1,57	1,46	1,42	1,76	1,87
	Total		15,97	16,82	14,83	19,12	18,76

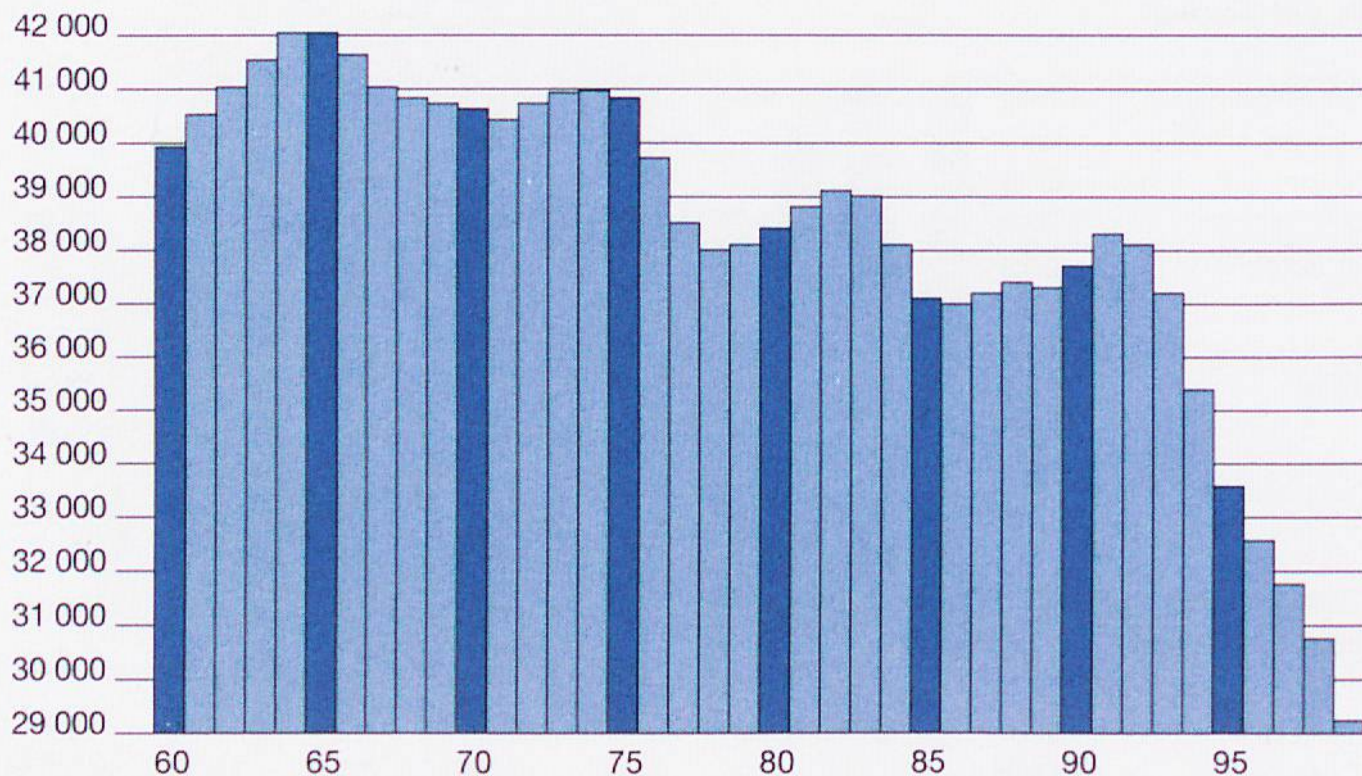
Total transalpine traffic as per product
(domestic, export, import, transit)

Gotthard	WLV	million tons	8,51	6,44	4,88	5,67	6,19
	UKV		5,09	7,74	7,32	10,10	10,06
	RLS		1,57	1,46	1,42	1,76	1,87
	Total		15,18	15,64	13,62	17,53	18,12
Simplon	WLV		3,73	3,99	3,70	4,07	3,34
	UKV		0,68	0,55	0,35	0,31	0,24
	Total		4,40	4,54	4,05	4,37	3,58
Total	WLV		12,24	10,43	8,58	9,74	9,53
	UKV		5,77	8,29	7,67	10,40	10,30
	RLS		1,57	1,46	1,42	1,76	1,87
	Total		19,58	20,18	17,67	21,90	21,70

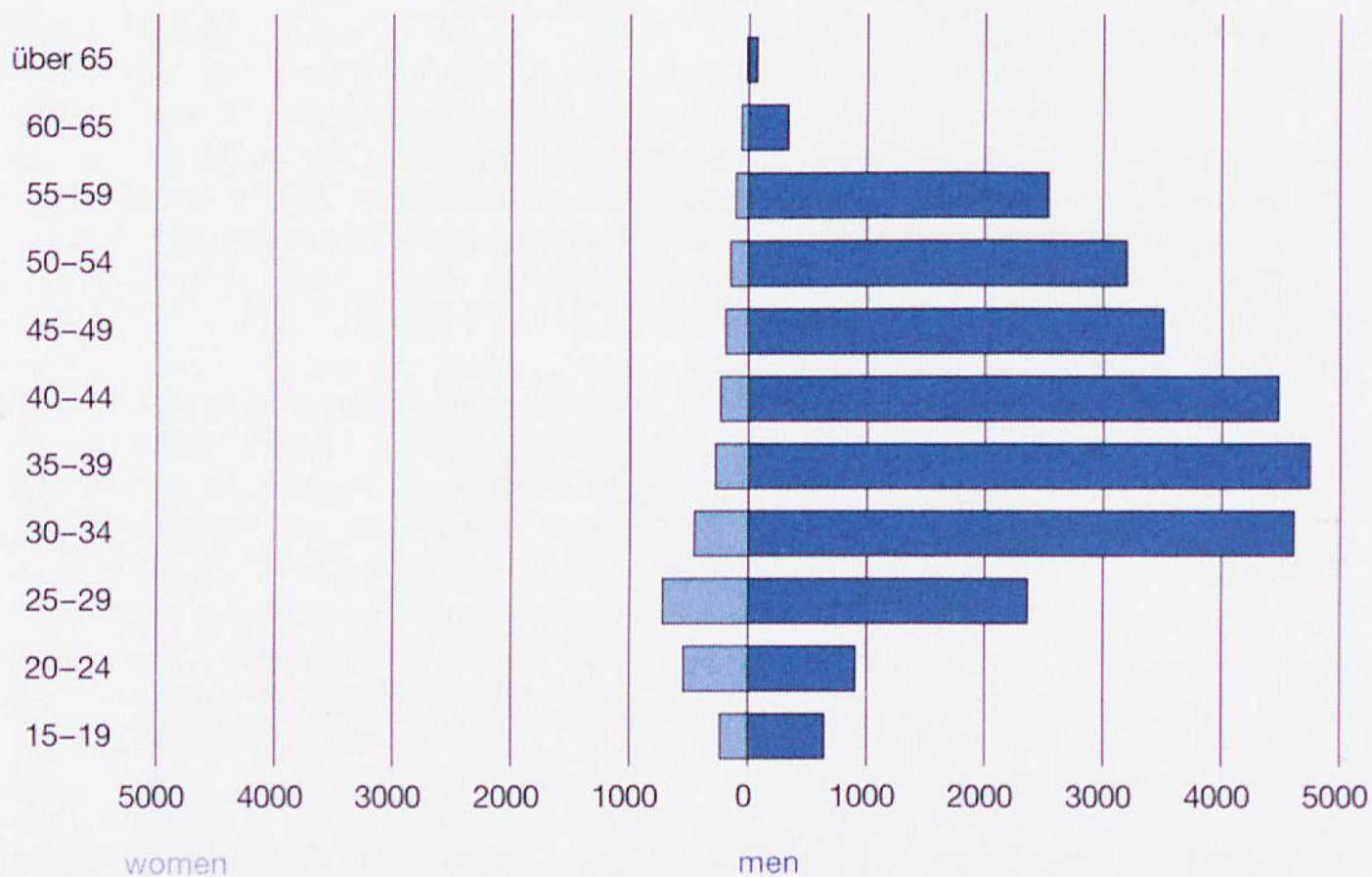
Total transalpine traffic as per type of traffic

Gotthard	Domestic	million tons	1,26	0,65	0,50	0,44	0,43
	Export		0,75	1,10	0,88	0,93	1,04
	Import		0,89	0,97	0,80	0,73	0,79
	Transit		12,27	12,91	11,43	15,43	15,86
	Total		15,18	15,63	13,61	17,53	18,12
Simplon	Export		0,32	0,37	0,46	0,45	0,46
	Import		0,34	0,26	0,19	0,23	0,22
	Transit		3,72	3,91	3,40	3,69	2,90
	Total		4,40	4,54	4,05	4,37	3,58
Total	Domestic		1,26	0,65	0,50	0,45	0,43
	Export		1,07	1,47	1,34	1,38	1,50
	Import		1,23	1,23	0,99	0,95	1,01
	Transit		15,99	16,82	14,83	19,12	18,76
	Total		19,58	20,17	17,66	21,90	21,70

Workforce 1960-1999



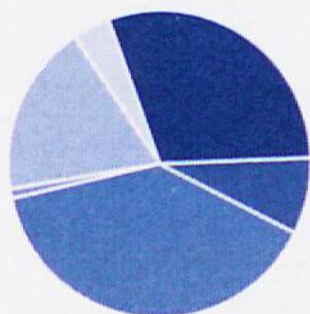
Age structure of staff 1999



		1980	1990	1998	1999
Workforce	annual mean	38 367	37 694	30 861	29 202
- women		1 725	3 047	3 117	2 629
- non-Swiss nationals		1 803	3 681	3 732	3 047
- in training ¹⁾		1 687	2 694	993	889
Entries	number	2 292	3 725	504	387
in percent of workforce	%	6,0	9,9	1,6	1,3
Employees	per 100 000 train-km	39,8	30,8	26,3	24,0

Personnel functions of divisions

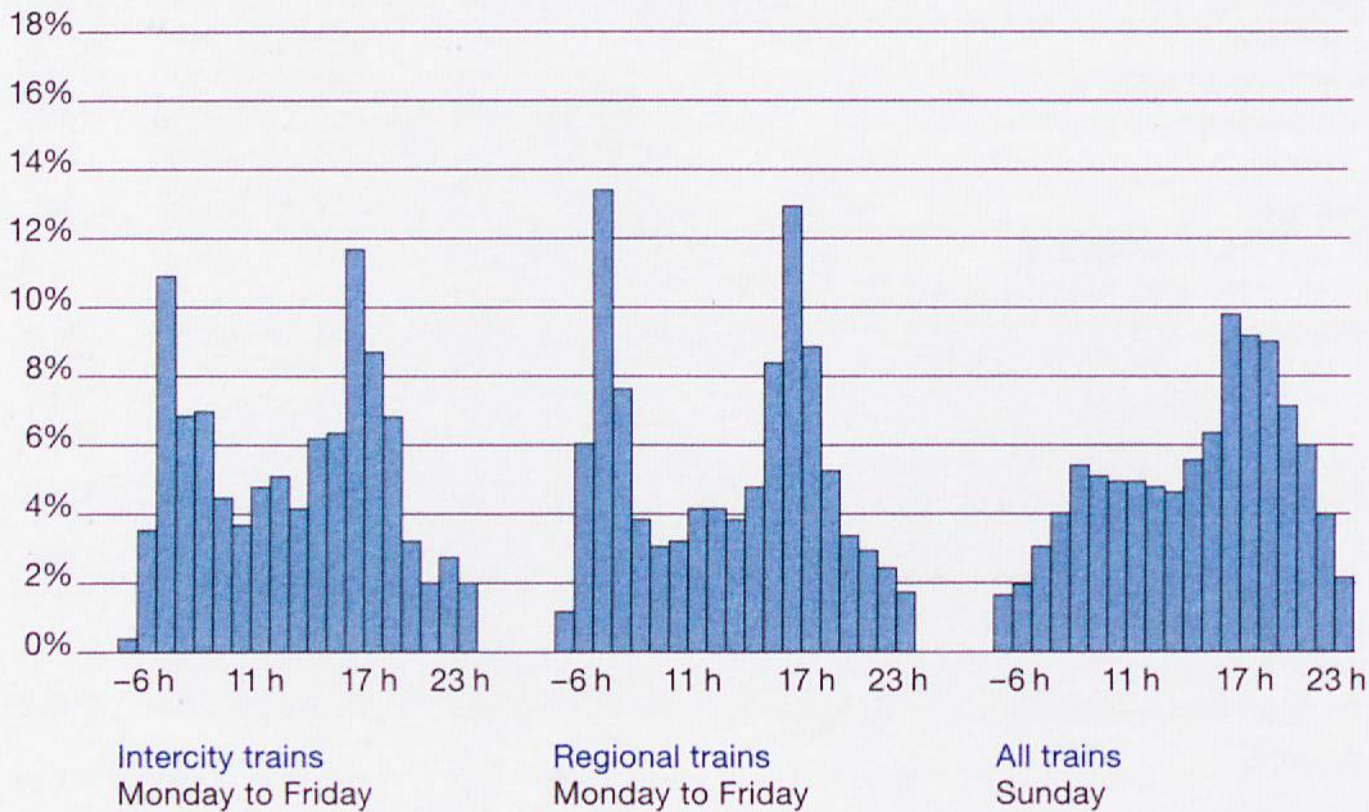
			%
Central services		1 032	4
Passenger traffic		8 757	30
Goods traffic		2 395	8
Infrastructure		11 269	39
Brünig/Detaché		193	1
Traction/Heavy maintenance of rolling stock		5 427	18
Detaché		129	
Total		29 202	100



- Passenger traffic 30%
- Goods traffic 8%
- Infrastructure 39%
- Brünig/Detaché 1%
- Traction/Heavy maintenance of rolling stock 18%
- Central services 4%

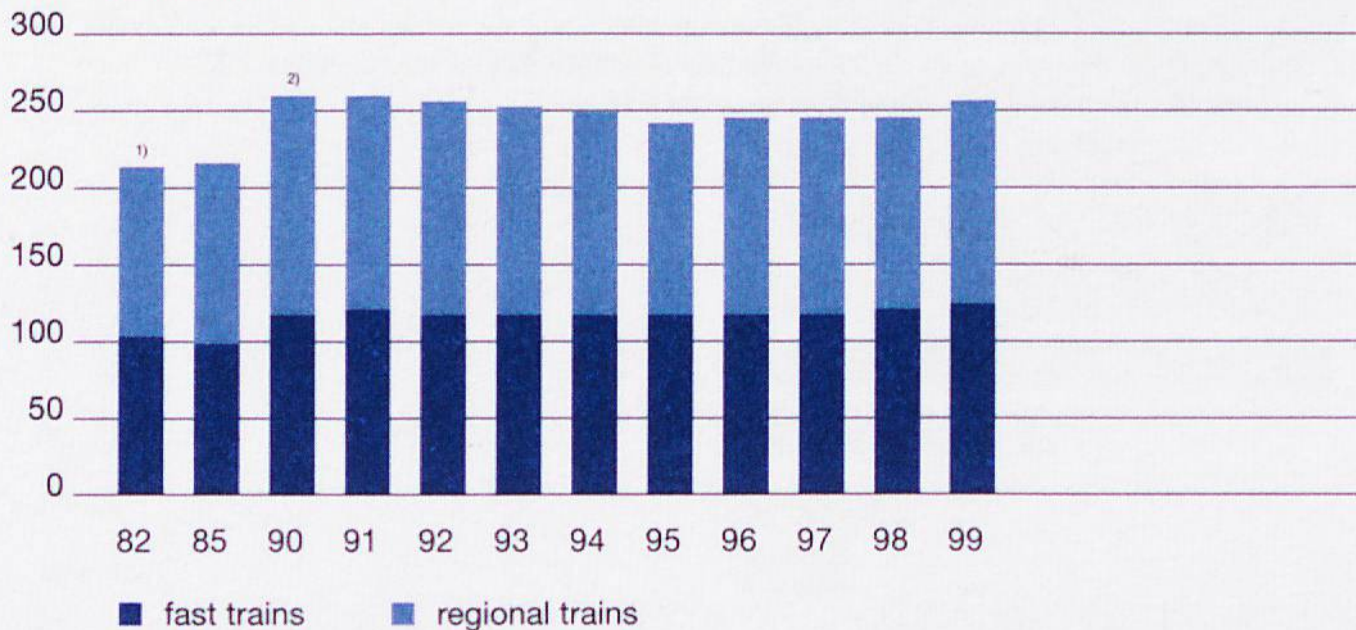
¹⁾ From 1985 including trainees for driving and technical control.

Load factors of passenger trains 1999 in the course of the day



Passenger train timetable

Performances in 1000 km



¹⁾ Introduction of cadenced timetable

²⁾ Introduction of S-Bahn Zurich

		1980	1985	1990	1998	1999
Train movements all trains	million km	96,3	106,6	122,3	123,5	127,5
Passenger trains		66,9	80,1	94,7	91,6	94,8
- long-distance traffic	%	...	46,7	44,4	51,1	48,8
- regional traffic		51,3	49,6	47,3	48,9	46,0
Freight trains	million km	29,0	25,8	27,1	25,9	26,6
Service trains		0,4	0,7	0,5	6,0 ³⁾	6,1 ³⁾

Train traffic density

		1980	1985	1990	1998	1999
per day and line	number	89,9	98,3	112,5	116,3	120,0
- Passenger trains		62,5	73,9	85,6	86,3	89,3
- Freight trains		27,1	28,8	24,9	24,4	25,0

Punctuality rate Passenger trains¹⁾	%		90	92	95	94
---	---	--	-----------	-----------	-----------	-----------

Seats offered per passenger train		424	416	447	454	472
Average number of passengers per passenger train		137	117	119	136	137
Average load factor	%	32,3	28,1	26,7	29,8	28,9

Gross tons per freight train	t	629	650	702	795	699
Transported tons per freight train		253	272	304	310	343
Proportion net/gross tons	%	40,2	41,8	43,2	47,0	49,0

Shipping service Lake of Constance

Fleet

- four motor boats with 1970 seats
- ferry boat with 100 seats
- ferry boat EUREGIA with 300 seats

Passengers transported	820 921 ²⁾	776 038 ²⁾
Motorcars transported	57 970	60 850
Lorries transported	19 374	21 061
Movements in ship/km	219 842	200 614

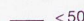
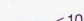


¹⁾ Share of trains departing with less than 5 minutes delay, as registered in the stations Basel, Bellinzona, Berne, Biel, Lausanne, Lucerne, Sargans, St. Gallen and Zurich.

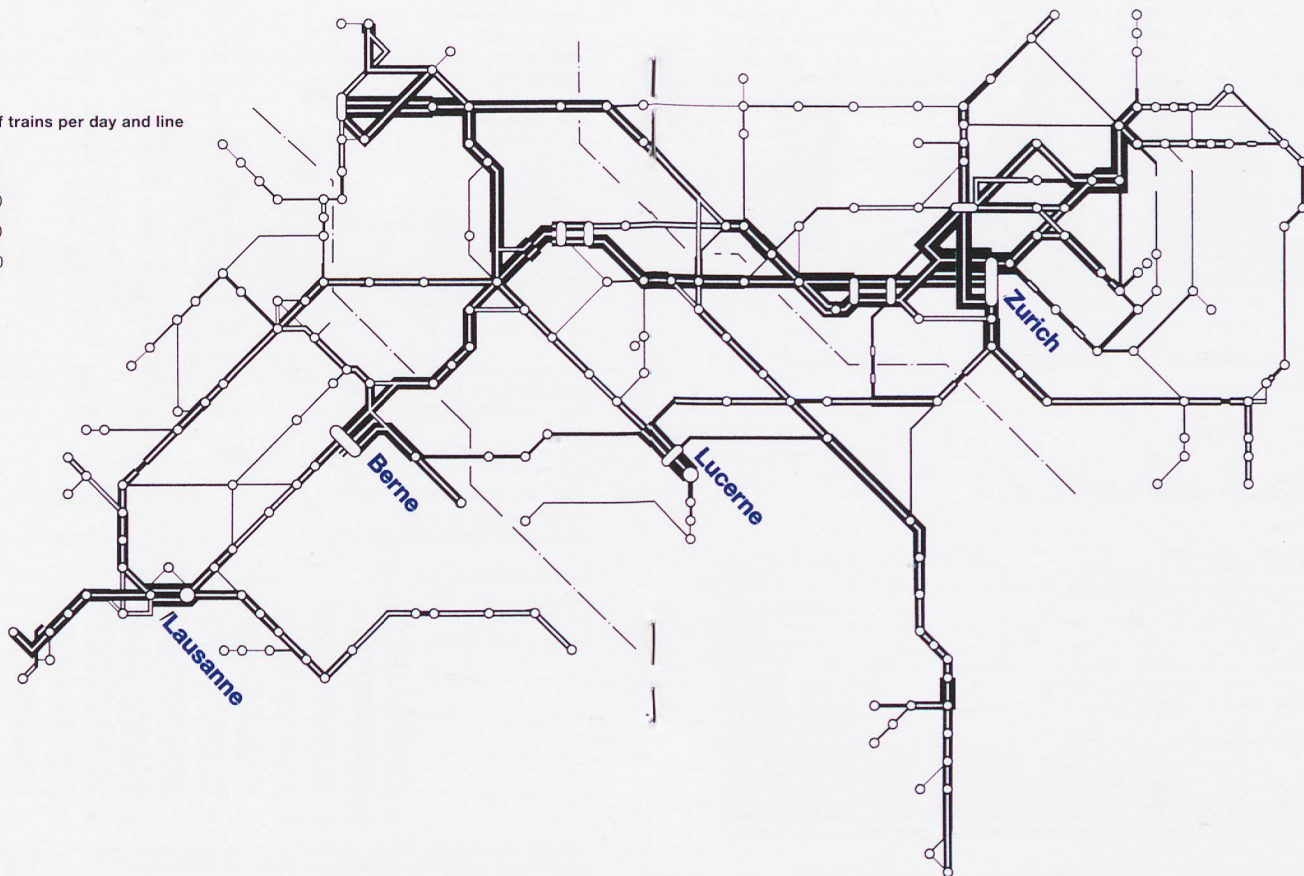
²⁾ Including ferry Romanshorn-Friedrichshafen and passenger boats Rorschach-Lindau-Friedrichshafen in joint operation with the DB AG Bodensee-Schiffsbetriebe.

³⁾ Including loco-only trains and «empties» trains.

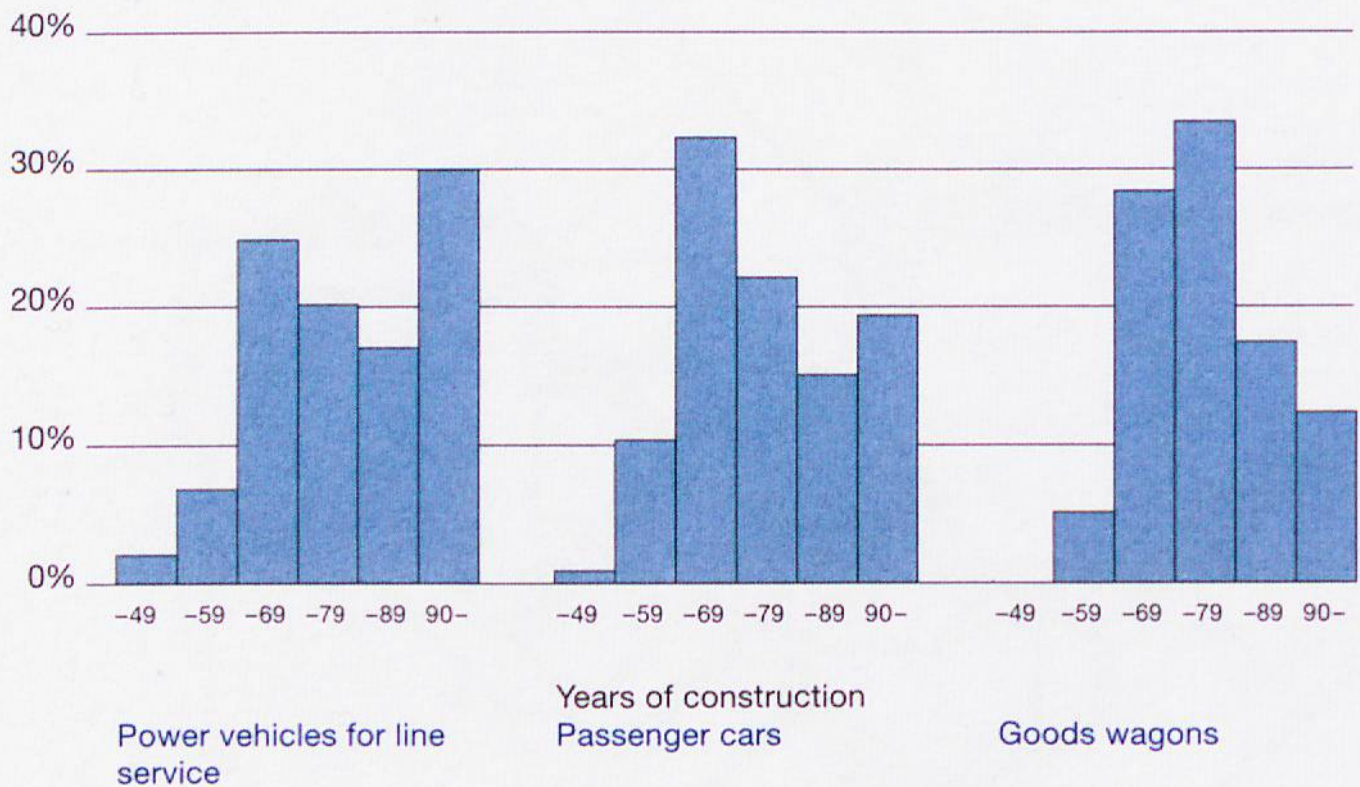
Average number of trains per day, 1999

Number of trains per day and line

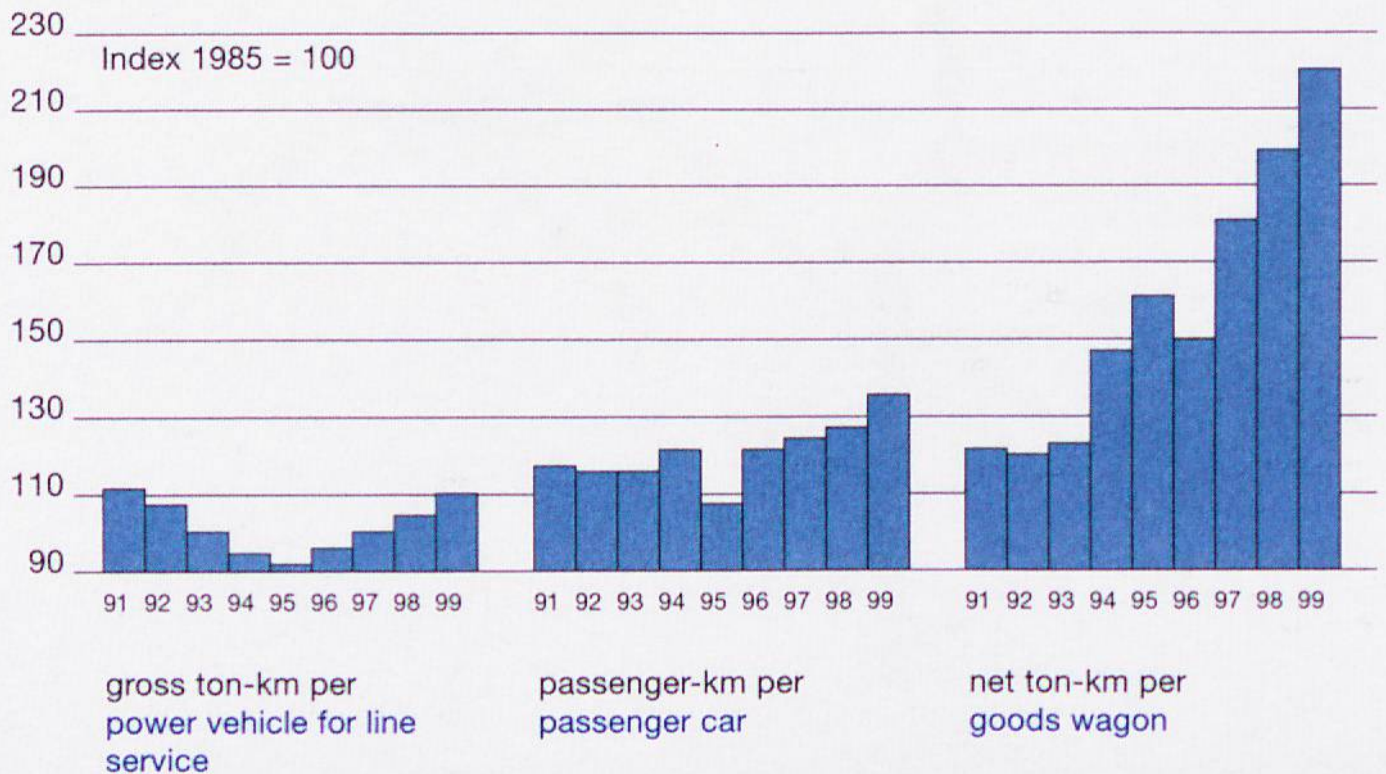
-  < 50
-  < 100
-  < 150
-  < 200



Age structure of the rolling stock 1999



Performances of the rolling stock



Stock on 1st January (without historical vehicles)

	1998	1999	2000	Power in kW per vehicle
Traction vehicles	number			
Total	2 053	2 032	2 015	2 227
- narrow gauge	35	35	35	769
Electrical line locomotives	761	752	752	5 003
Electrical power cars	234	234	234	1 815
Shunting and Diesel locomotives	310	307	299	568
Shunting and Diesel tractors	713	704	695	150

				Seats per car	proportion 1 st class
Passenger cars (2000: Brünig excluded)					
Total SBB	3 975	3 993	3 847		
- narrow gauge	95	95	...		
- air-conditioned	990	974	...		
Passenger cars 1 st and 2 nd class	3 153	3 229	3 002	78,4	23,3%
Dining cars	49	44	43	46,2	
Couchette cars	60	60	59	60,0	
Sleeping cars	13	13	16	34,4	
Driving trailers	416	432	439	83,5	0,05%
Power cars	284	215	288	59,5	8,1%

Load capacity in tons
per wagon

Luggage vans	332	374	222	12,2
Mail vans (property of «Die Post»)	488	488	471	13,4

Goods wagons (2000: Brünig excluded)

				4 axels	Load capacity in tons per wagon
Total SBB	14 230	13 745	13 021	4 727	41,10
- narrow gauge	111	111
E open, standard type	2 666	2 444	2 273	1 592	49,11
F open, special type	713	700	691	163	45,80
G covered, standard type	750	691	683	-	26,06
H covered, special type	3 787	3 765	3 754	200	29,28
K flat, standard type	1 320	1 307	1 304	-	27,97
L flat, special type	28	23	19	-	25,74
R flat, 4 axels, standard type	872	865	865	865	55,71
S flat, 4 axels, special type	1 582	1 640	1 641	1 641	74,37
T with roof that can be opened	1 401	1 355	1 343	179	31,51
U special wagons/lowfloor wagons	1 111	955	448 ¹⁾	87	32,77
P private wagons in SBB fleet	6 459	6 374	6 770	3 638	57,75

¹⁾ 2000: private wagons

Fixed installations

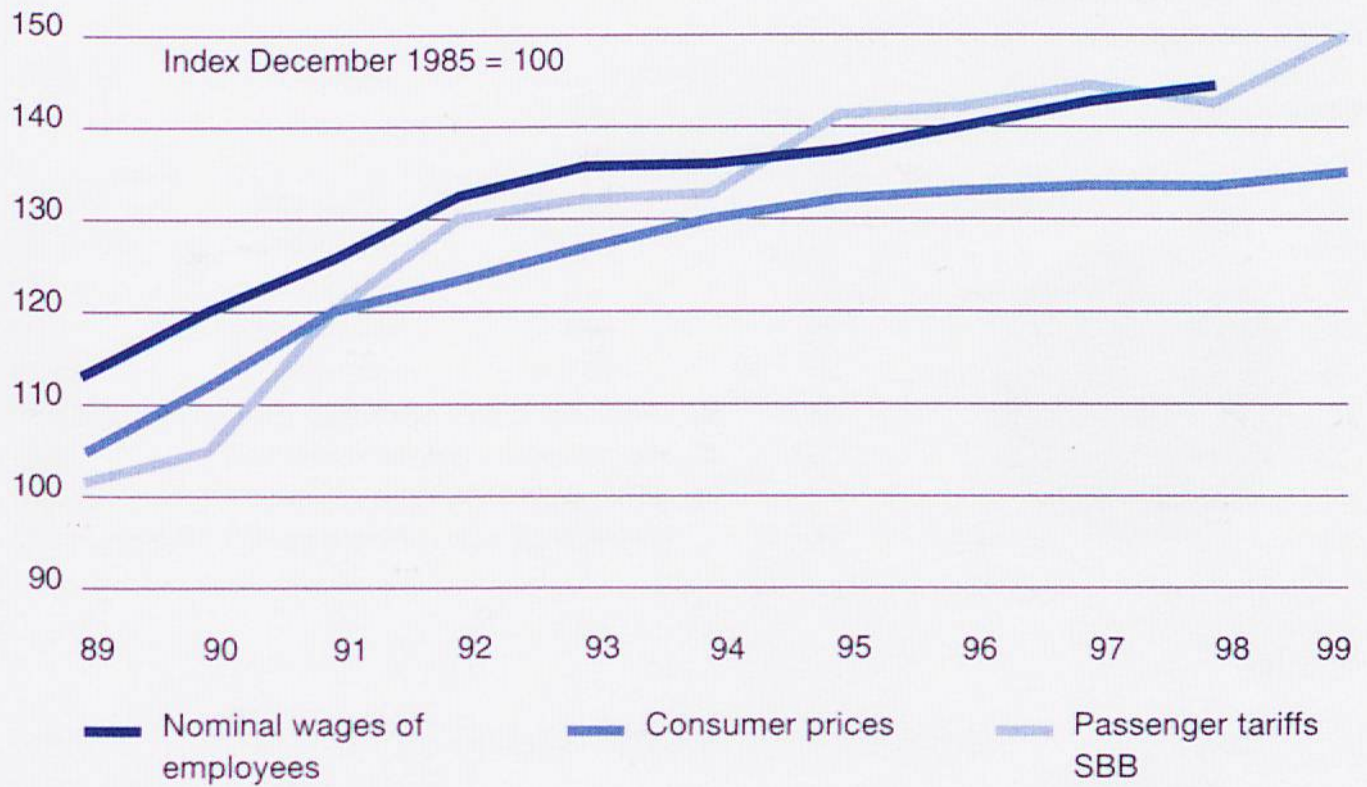
		1971	%	1998	%	1999	%
Number of SBB stations	number	816		757		744	
– open for passenger traffic		807		750		...	
– open for goods traffic		677		458		481	
Number of private sidings		1 631		1 840		1 822	
– SBB clients with private sidings		2 319		2 364		2 358	
Operated lines	km	2 913	100	2 910	100	2 902	100
– with goods traffic only		14	0,5	103	3,5	110	3,5
– not electrified		16	0,5	8	0,3	8	0,3
– with narrow gauge		74	2,5	74	2,5	74	2,5
– with train radio ¹⁾		481		1 400	48,1	1 400	48,1
Lines used by SBB trains		2 973		2 977		2 977	
Own lines		2 926	100	3 005	100	3 005	100
– single track		1 582	54,0	1 412	47,0	1 402	47,0
– streight line		1 832	62,6	1 757	58,5	1 757	58,5
– level lines		939	32,1	903	30,0	903	30,0
Tunnels	number	241		267		267	
– length	km	188		215		215	
Bridges	number	3 843		5 546		5 546	
– length	km	45		85		85	
Length of tracks		6 737		7 369		7 369	
– main tracks		4 288	100	4 570	100	4 580	100
– welded track		2 907	68,0	4 376	95,8	4 386	95,8
Road crossings	number	6 776		5 944		5 944	
– overpasses		802		993		993	
– underpasses		2 703		3 301		3 301	
– level crossings		3 271		1 650		1 650	
Locally operated barriers for level crossings		307		0		0	

Superlative

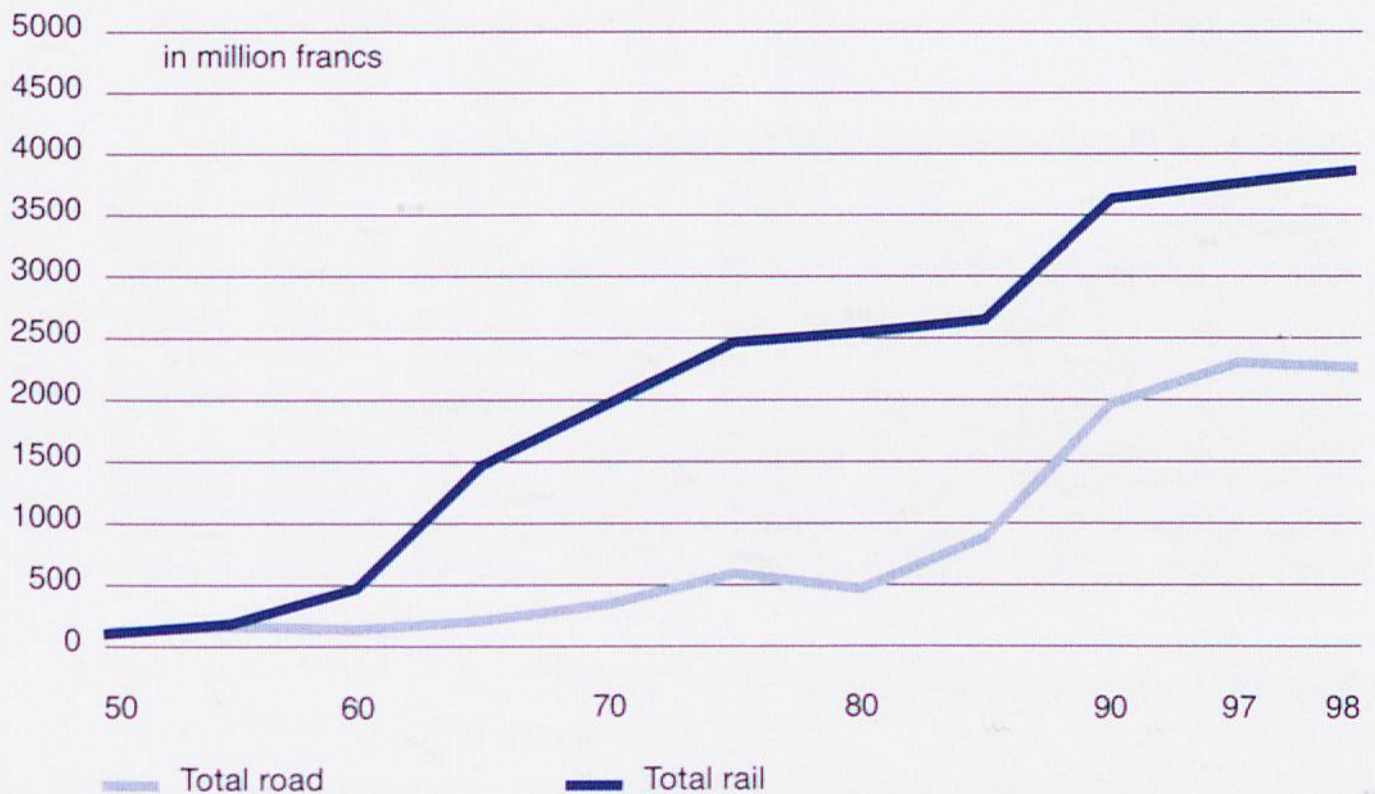
steepest gradients	878 ‰	Piotta–Piora (funicular)
	121 ‰	Brünig–Meiringen (metre gauge, rack)
	38,8 ‰	Beinwil am See–Reinach SBB (normal gauge)
longest level line	9,8 km	Solothurn–Arch
longest streight line	19,2 km	Brig–Iselle di Trasquera (Simplon)
highest station	1141 m ü.M.	Airolo
lowest station	202 m ü.M.	Riazzino–Cugnasco
longest bridge	1266 m	Hardturm viaduct Zurich
highest bridge	77 m	Reuss bridge near Intschi (Gotthard)
longest tunnel	19 823 m	Simplon II
shortest tunnel	7 m	Moutier III
oldest line	9.8.1847	Zurich–Baden (Spanisch-Brötli-Bahn)

¹⁾ Level 1.1.1997

Prices, tariffs, wages



Development of the investments for traffic infrastructure

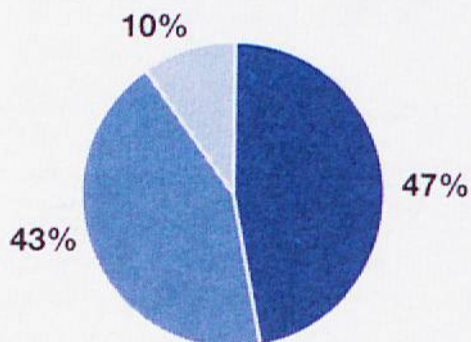


Energy turnover 1999

Total = 4321 million kwh

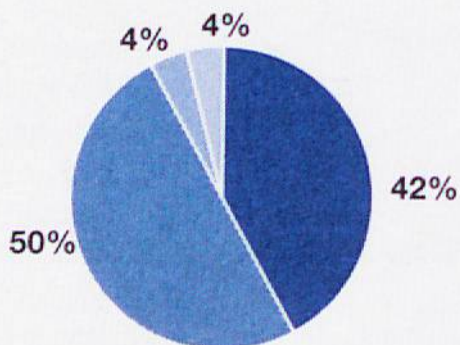
SBB-train operation = 1812 million kwh

Source 1999



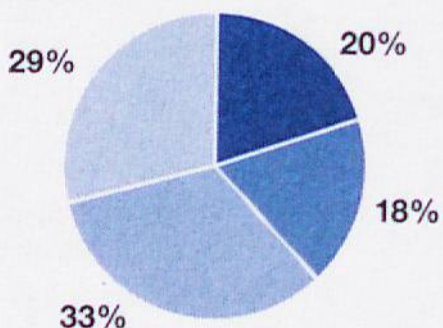
- Own and jointly operated power plants¹⁾ 47%
- Partly owned plants²⁾ 43%
- Other power plants, and energy from other railways 10%

Use 1999



- SBB train operation 42%
- Other plants/operation of pumps 50%
- Own consumption and leaks 4%
- Private railways/foreign railways 4%

Break-up of energy consumption 1998 on the national scale



- Agriculture/the crafts/service industry 20%
- Industry 18%
- Transport 33%
- Households 29%

Total = 847 100 Tera-Joule

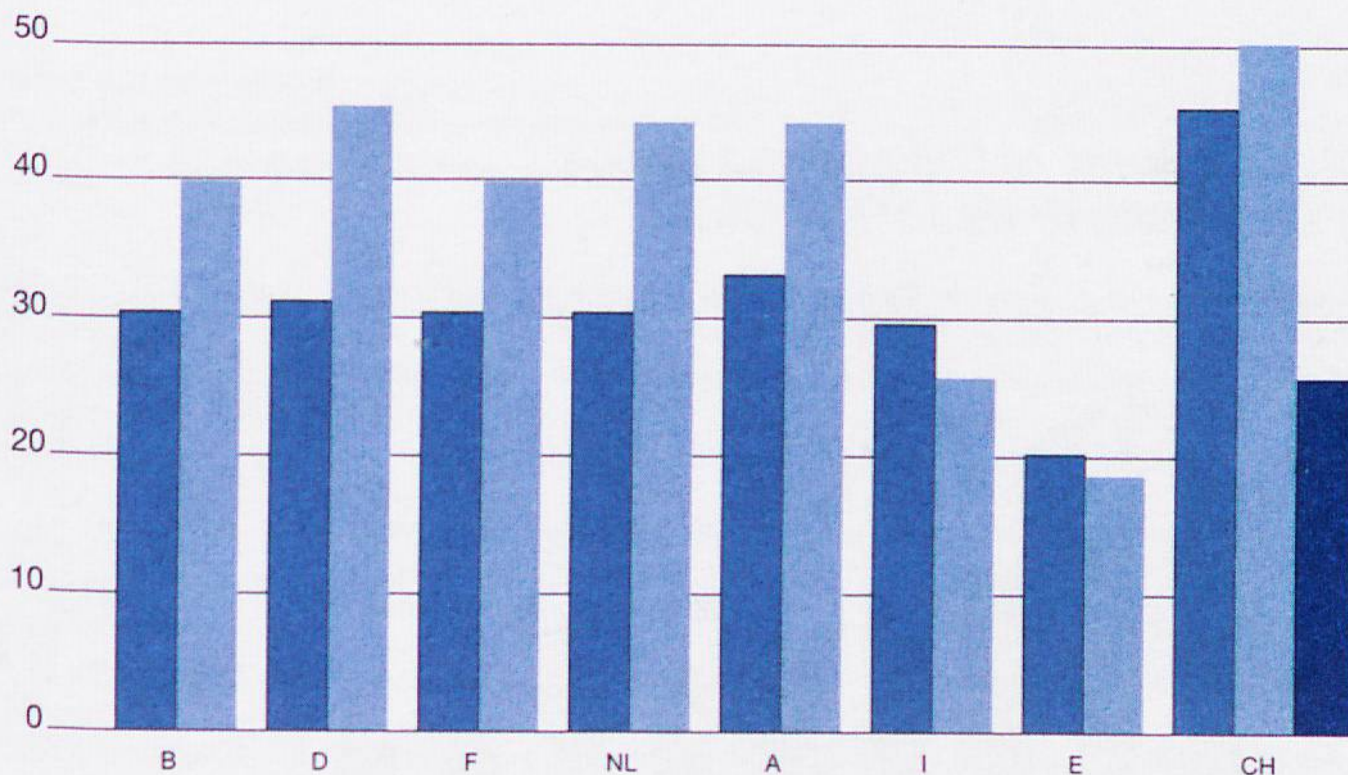
¹⁾ Amsteg, Ritom, Vernayaz, Châtelard-Barberine, Massaboden, Trient, Etzel, Göschenen, Wassen, Rupperwil-Auenstein

²⁾ Electra Massa, CTV-Vouvry, AKEB, ENAG, KKW Gösgen and Leibstadt

European railways in comparison, with figures 1998

railway	country	network length		staff	trips per inhabitant
		km	of which electrified %		
DB AG	Germany	38 127	49	209 600	16
DSB/BS	Denmark	2 264	20	...	28
FS	Italy	16 041	65	118 300	8
NS	The Netherlands	2 808	73	26 600	20
ÖBB	Austria	5 643	60	53 500	22
RENFE	Spain	12 303	56	35 000	10
SBB	Switzerland	2 910	100	30 900	37
SNCB	Belgium	3 410	74	40 000	14
SNCF/RFF	France	31 724	45	175 100	14

Fares in relation to Gross National Product per inhabitant 1998



■ Yearly Gross National Product per inhabitant in 1000 francs

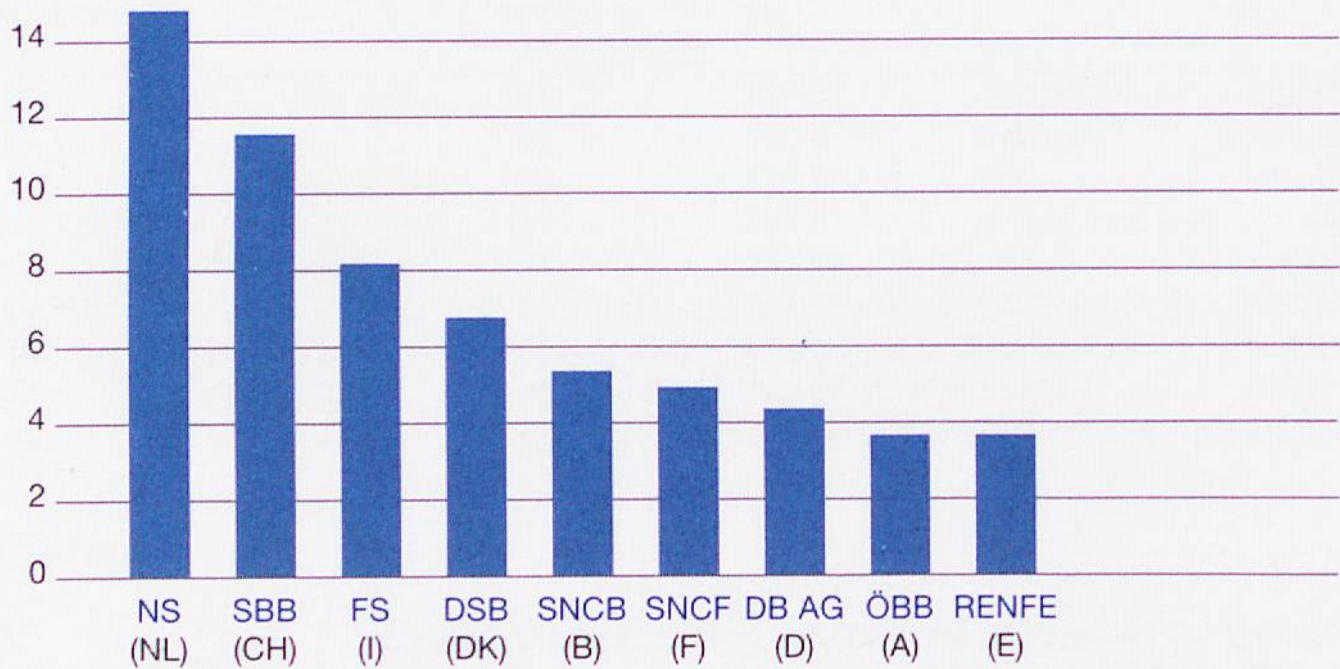
■ Fare of a return ticket 2nd class in francs (100 km)¹⁾

■ Fare of a return ticket 2nd class in francs (100 km) with a Half-Fare Card

¹⁾ The graph compares ordinary fares. The individual railways offer different tariff facilities.

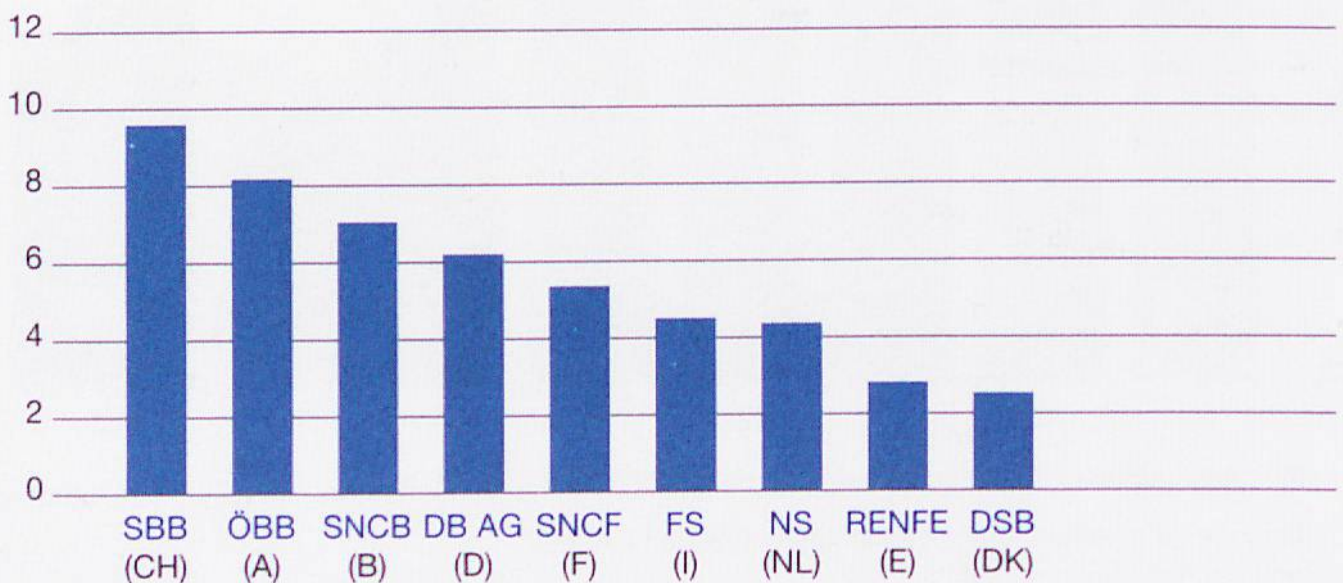
Mean number of passengers per day and line 1998¹⁾

in 1000 persons



Mean volume of transported goods per working day and line 1998²⁾

in 1000 tons



¹⁾ Pkm: network length: 365

²⁾ Tkm: network length: 309

The Swiss transport sector

		1970	1980	1990	1995	1996 ¹⁾
Modal shares in passenger transport						
- Rail	% of p-km ²⁾	16,0	12,5	13,2	14,0	...
- Road		82,5	85,9	84,8	83,5	...
of which public transport		5,1	4,3	4,8	5,7	...
- Air traffic		1,2	1,4	1,8	2,3	...
- Waterways		0,3	0,2	0,2	0,2	...

Modal shares in goods transport

		1980	1990	1995	1998	1999
- Rail	% of t-km	53,1	45,3	41,1	37,8	34,7
- Road		36,7	42,1	48,3	55,9	59,2
- Pipelines (oil and gas)		9,0	11,8	9,6	5,4	5,4
- Waterways/air		1,2	0,8	1,0	0,9	0,7

Length of networks

		1980	1990	1995	1998	1999
Rail, lines owned	km	4 982	5 030	5 041
Road ³⁾		66 544	71 099	71 372	71 278	71 330
- Motorways		1 170	1 495	1 540	1 638	1 857
Pipelines (oil)		239	239	239	110	110

Gotthard road tunnel

- Average daily number of vehicles	number	8 240	15 592	17 259	18 255	17 806
- Average daily number of lorries and motorcoaches		742	2 057	2 877	3 405	3 523

Motorization rate

		2,56	3,81	4,12	4,35	4,47
Private cars	million	2,26	2,99	3,2	3,4	3,5
- Inhabitants per motorcar	number	2,8	2,3	2,2	2,1	2,1
Vehicles for the transportation of goods	1000	166	272	262	267	274

Tourism

Arrivals in hotels and health establishments	1000	10 937	13 047	11 962	12 647	12 907
- of which foreigners		6 676	7 978	6 961	7 196	7 167
Overnights:						
hotels and health establishments		35 716	37 548	32 616	32 924	33 197

¹⁾ latest available figures from the Federal Statistics Office

²⁾ new calculation of season tickets for unlimited number of trips, as from 1980, and inclusion of children travelling free as from 1987

³⁾ Municipal and cantonal roads (level 1984/97)
motorways (level December 1999)

General data on the Swiss economy

		1980	1990	1998	1999
Inhabitants					
Yearly average	1000	6 385	6 796	7 132	7 164 ¹⁾
- up to 19 years old		1 756	1 578	1 656	1 661 ¹⁾
- more than 65 years old		875	978	1 073	1 087 ¹⁾
- gainfully employed persons		3 166	3 821	3 848	3 873 ¹⁾
Gross National Product (nominal)	billion francs	177,3	327,6

Foreign trade

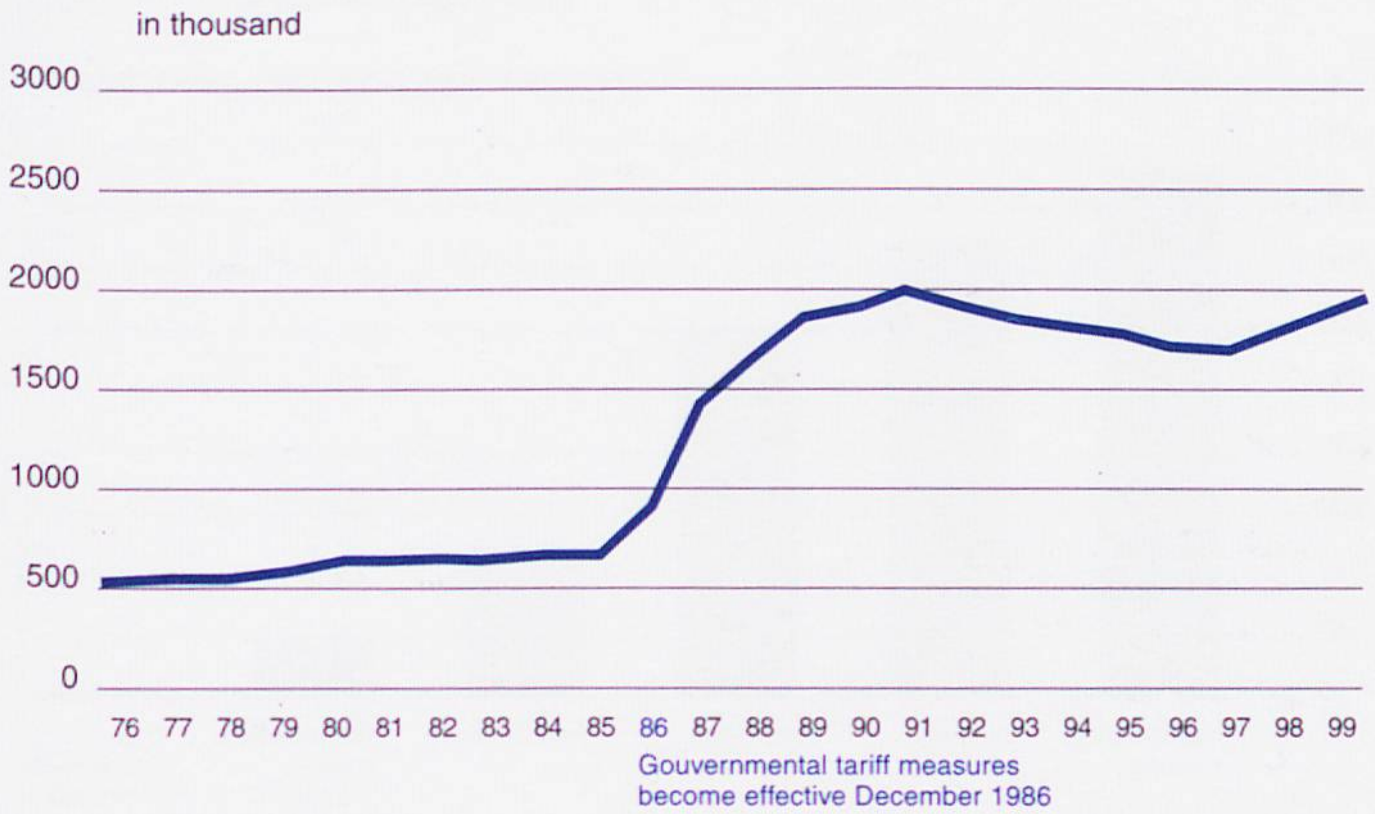
Import	millions de t	45,2	40,2	42,4	42,4
- foodstuffs and animal feed		3,3	3,3	3,5	3,7
- liquid fuels and propellants		13,5	13,0	15,7	14,8
- solid fuels		0,6	0,4	0,2	0,2
- metals		2,8	2,8	2,8	2,7
Value	billion francs	96,6	94,5	115,8	120,1
Export	million tons	7,7	9,3	11,6	12,2
Value	billion francs	88,7	95,8	114,1	120,7
Balance		-8,4	1,3	-1,8	0,7
Balance of earnings	CHF m	11 995	24 984¹⁾	34 600¹⁾	...

		1980	1990	1997	1998
Degree of profitability					
Railway account (with PSO grant)	in %	76,8	83,8	82,7	84,7
- SBB (incl. payments for infrastructure)		79,4	91,0	89,1	91,5
- licenced (private) railways		66,0	56,5	62,2	62,9
Road account (capital statement) ²⁾		87,2	96,0	101,5	
- motorcars		99,6	95,8	100,4	
- private motorcoaches		56,1	89,6	104,2	
- heavy goods vehicles (over 3,5 tons)		54,3	104,0	114,7	
- semi-trailers and trailers		5,5	67,7	84,0	

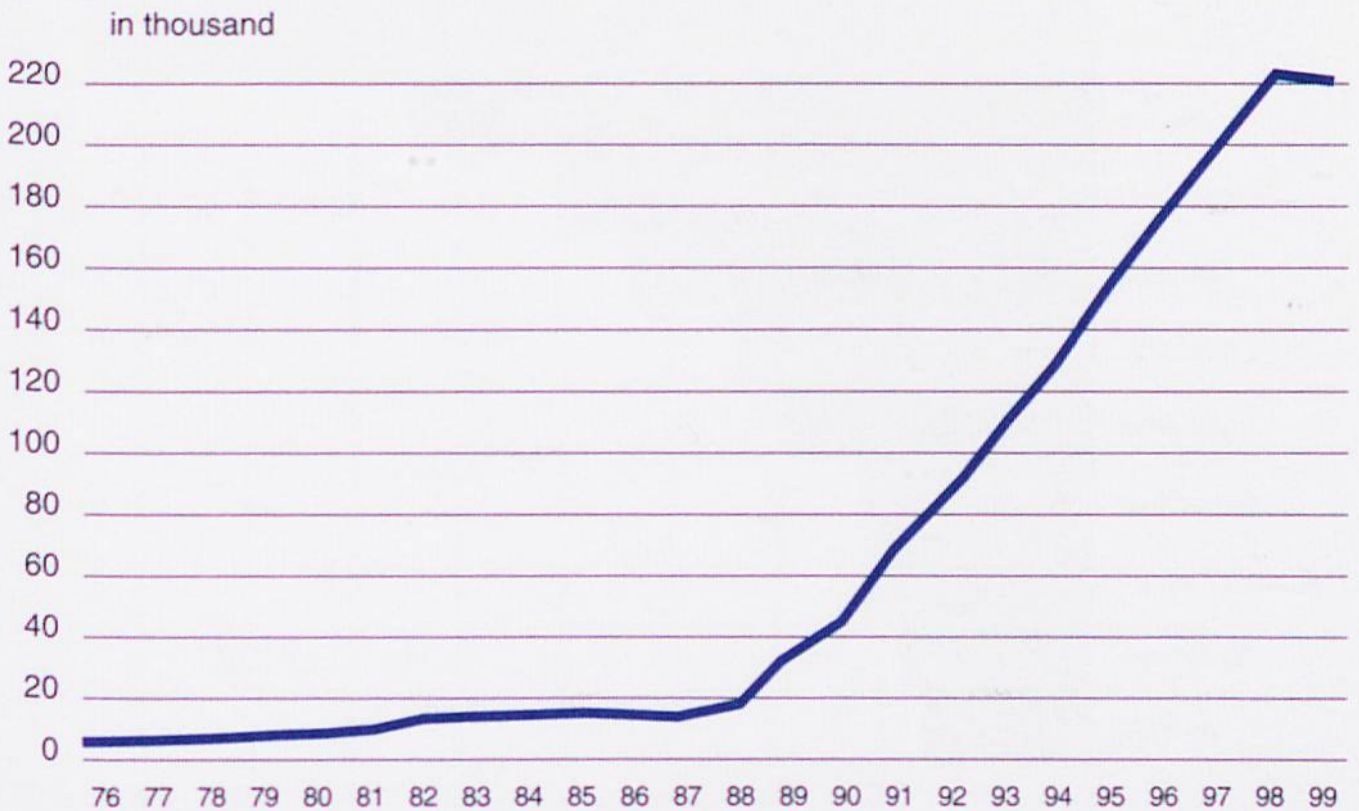
¹⁾ provisional

²⁾ new methodology as from 1985

Sales development of Half-Fare Cards



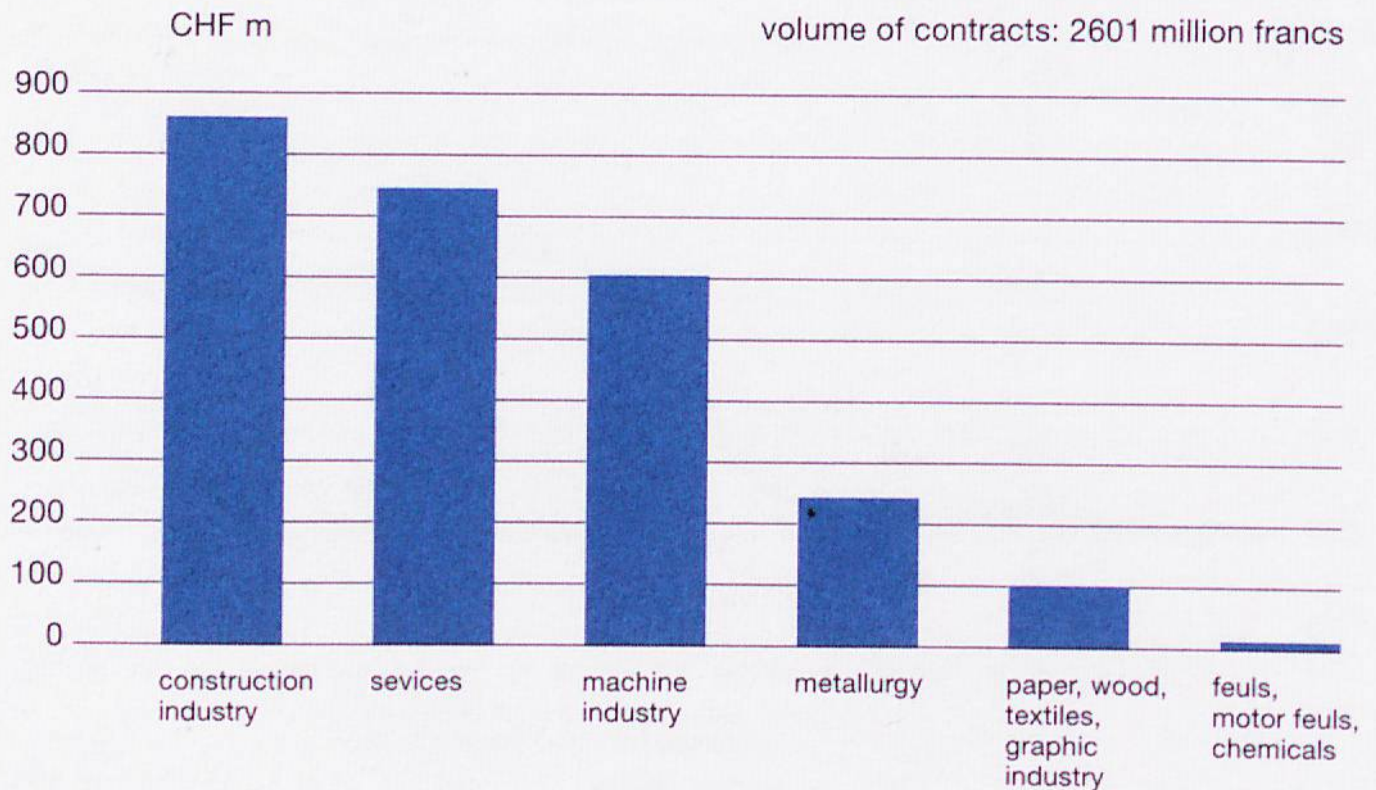
Sales development of General Abonnements



The SBB as contract placers 1999

24 071 suppliers

23 236 within Switzerland (=96,5%)



The most important stations 1999

Passenger traffic

As per turnover (million francs)

