

Zeitschrift: Anthos : Zeitschrift für Landschaftsarchitektur = Une revue pour le paysage
Herausgeber: Bund Schweizer Landschaftsarchitekten und Landschaftsarchitektinnen
Band: 50 (2011)
Heft: [1]: Scales of Nature : 48th IFLA World Congress

Artikel: Design for cultural sustainability of ecosystem services
Autor: Nassauer, Joan Iverson
DOI: <https://doi.org/10.5169/seals-309258>

Nutzungsbedingungen

Die ETH-Bibliothek ist die Anbieterin der digitalisierten Zeitschriften. Sie besitzt keine Urheberrechte an den Zeitschriften und ist nicht verantwortlich für deren Inhalte. Die Rechte liegen in der Regel bei den Herausgebern beziehungsweise den externen Rechteinhabern. [Siehe Rechtliche Hinweise.](#)

Conditions d'utilisation

L'ETH Library est le fournisseur des revues numérisées. Elle ne détient aucun droit d'auteur sur les revues et n'est pas responsable de leur contenu. En règle générale, les droits sont détenus par les éditeurs ou les détenteurs de droits externes. [Voir Informations légales.](#)

Terms of use

The ETH Library is the provider of the digitised journals. It does not own any copyrights to the journals and is not responsible for their content. The rights usually lie with the publishers or the external rights holders. [See Legal notice.](#)

Download PDF: 04.02.2025

ETH-Bibliothek Zürich, E-Periodica, <https://www.e-periodica.ch>

DESIGN FOR CULTURAL SUSTAINABILITY OF ECOSYSTEM SERVICES

Joan Iverson Nassauer



Cultural sustainability refers to the degree to which cultural norms and values sustain environmental health (Nassauer 1997). While cultural norms often undermine environmental health, social scientists have recognized that strategies that work within cultural norms are essential to preventing the collapse of socio-ecological systems around the world (Ostrom 2007). However, landscapes

as activating elements within socio-ecological systems, and even more, design as landscape intervention, have not yet been fully understood as a part of such strategies. I will argue that designers' understanding and respectful appropriation of cultural norms for the experience of landscapes can be a powerful tool for protecting and enhancing ecosystem services by ensuring their cultural sustainability, and that cultural sustainability is a useful criterion for ecological design for human-dominated landscapes, including urban, peri-urban, and rural settings.

Ensuring the cultural sustainability of socio-ecological systems should include familiarity with vernacular landscape aesthetics, which, by definition, are recognized and valued by people in their everyday lives. Vernacular landscapes, which J. B. Jackson (1984)

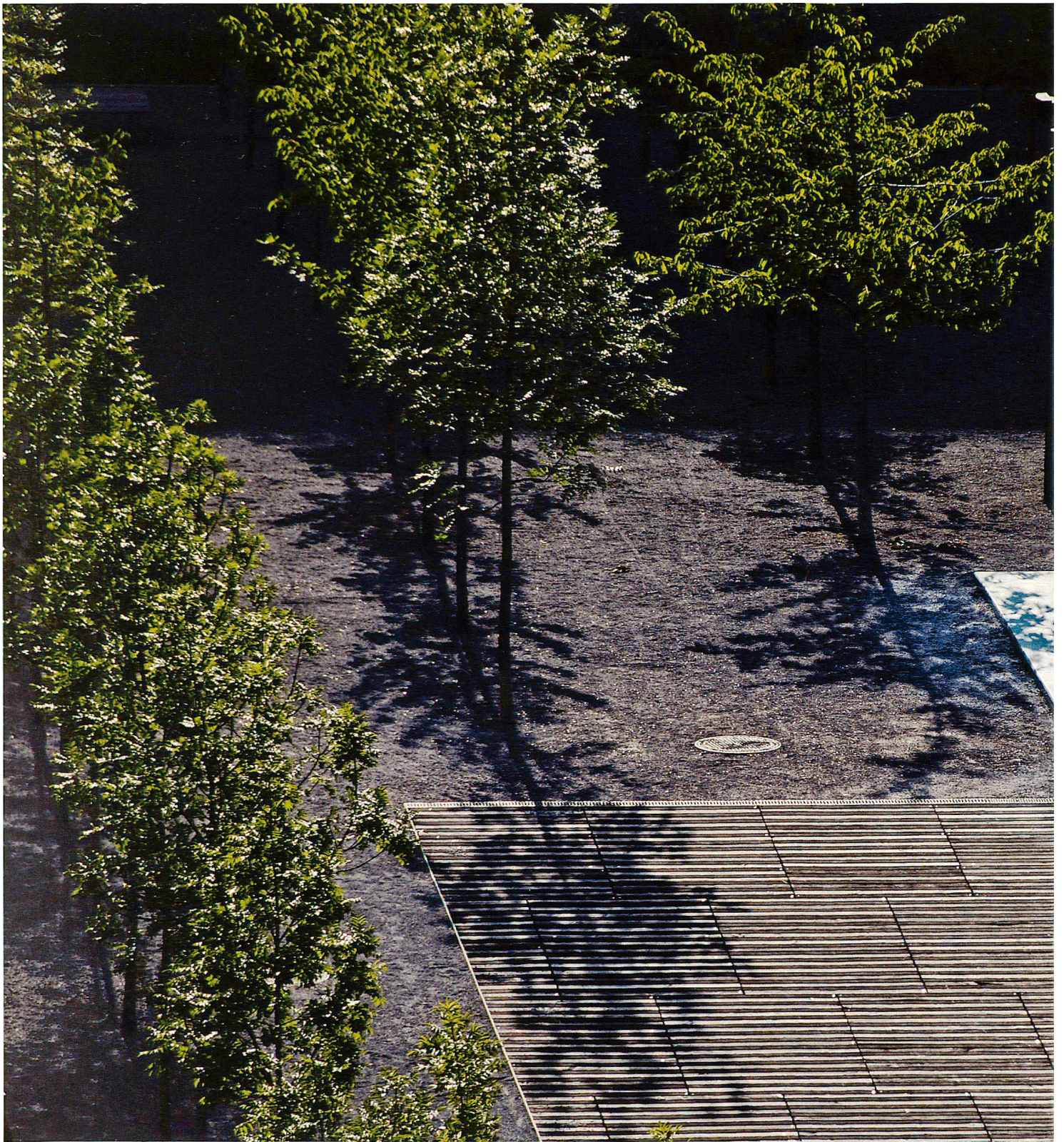
defined as the product of "local custom, pragmatic adaptation to circumstances, and unpredictable mobility", dominate terrestrial ecosystems and have global effects. Decisions about how to change or maintain these landscapes are driven in part by vernacular aesthetics that embody cultural norms. However, vernacular aesthetics sometimes are understood to be antithetical to design innovation. Drawing on examples from design and social science research in rural, peri-urban and urban landscapes, I will describe some vernacular landscape aesthetics that may be useful in ecological design and planning, and I will discuss the relevance of these examples for the evolution of agricultural policy, exurban sprawl, and post-industrial cities. Certain principles for interdisciplinary design intervention may apply across the urban/rural transect. I hope to demonstrate that if design innovation is attentive to cultural sustainability, it can be more relevant for meeting global environmental challenges.

Bibliography

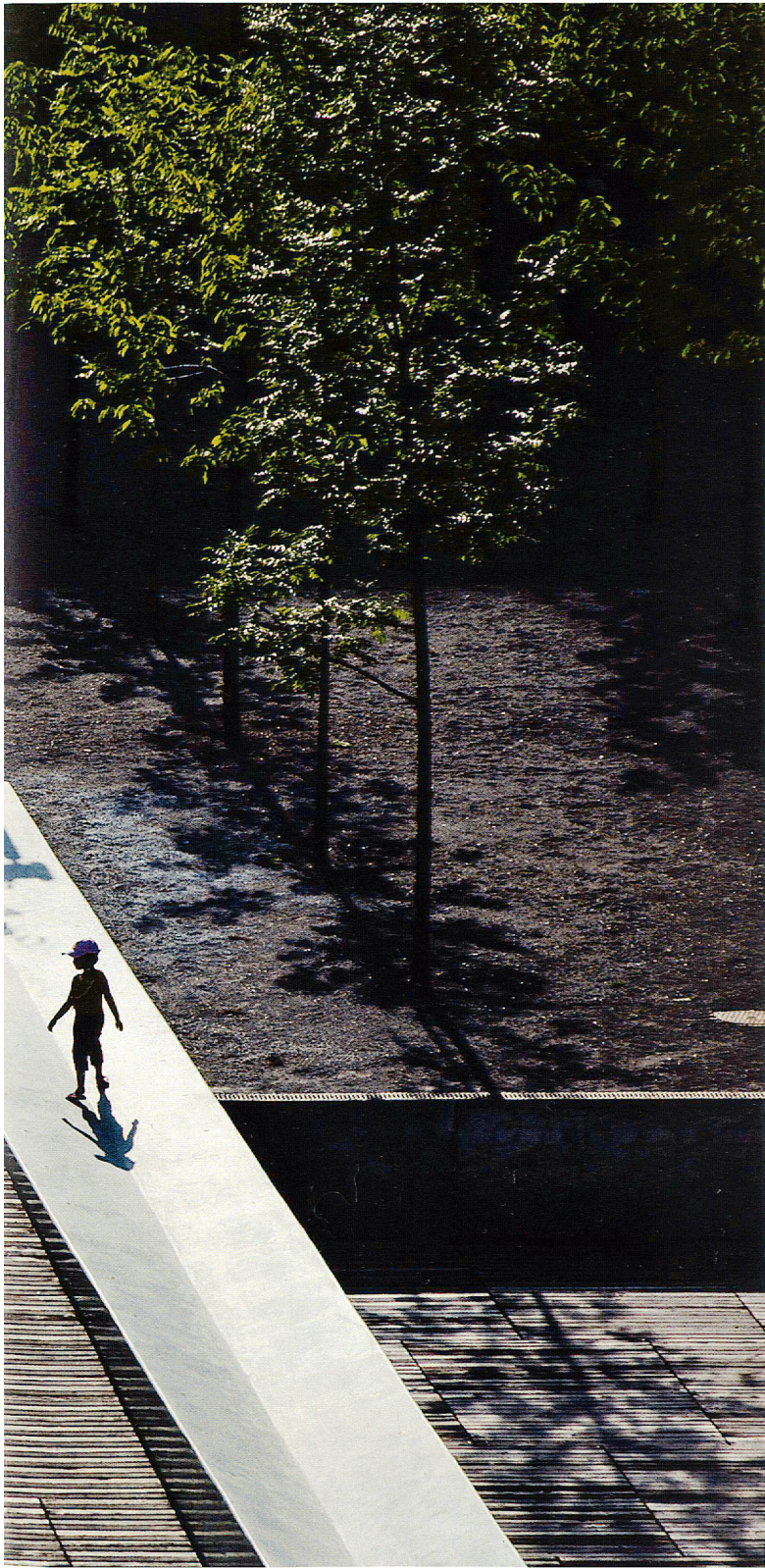
- Jackson, J. B. (1984): *Discovering the Vernacular Landscape*. New Haven.
Nassauer, J. I. (1997): Cultural sustainability: aligning aesthetics and ecology. In: Nassauer, J. I. (ed.): *Placing Nature: Culture in Landscape Ecology*. Washington, D. C., pp. 65–83.
Ostrom, E. (2007): Sustainable Social-Ecological Systems: An Impossibility? On Social Science Research Network. http://papers.ssrn.com/sol3/papers.cfm?abstract_id=997834 [accessed Feb. 18, 2011].



Phalen Wetland Park, St. Paul, MN, USA, 2000

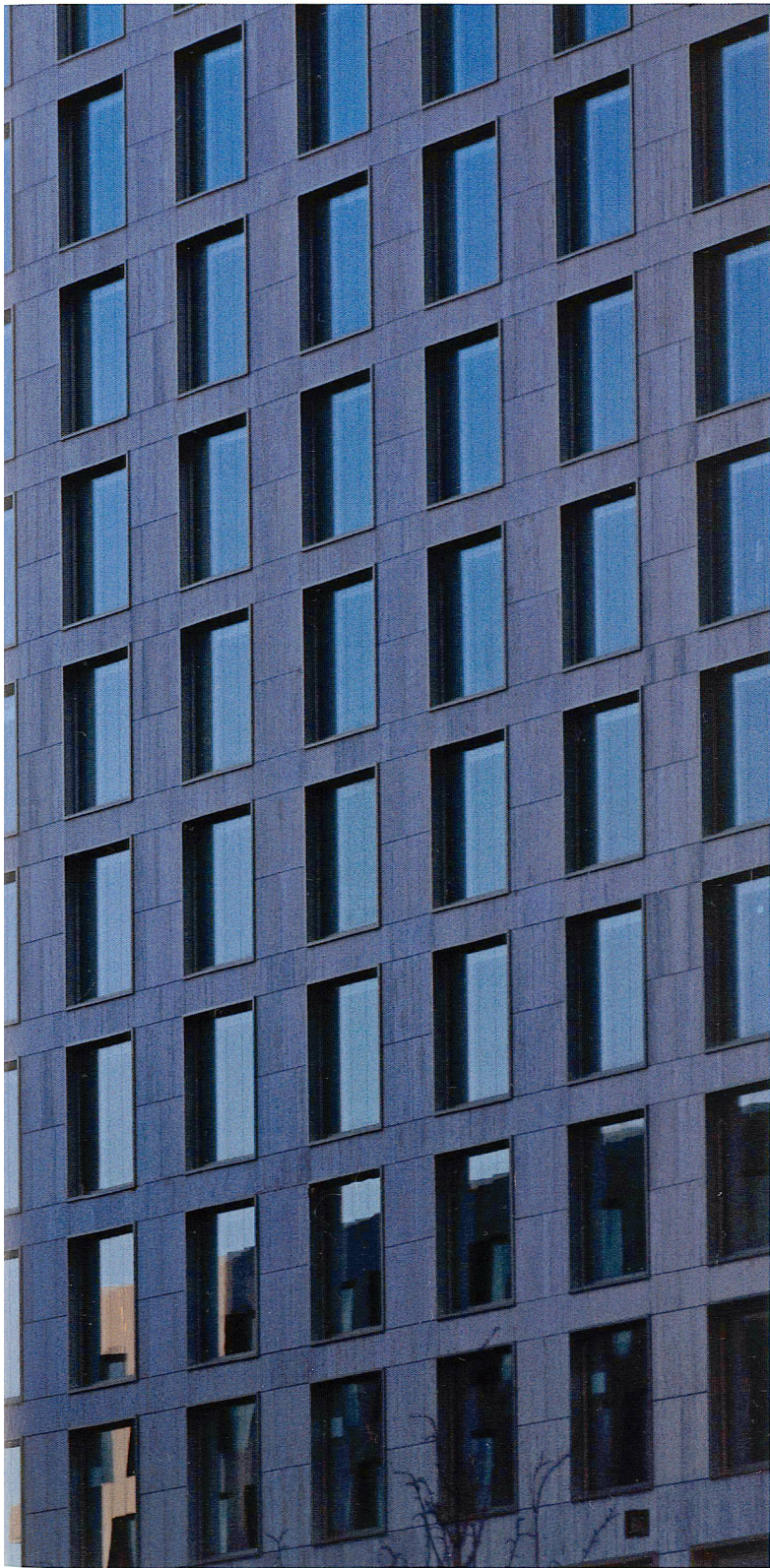


Eke Miedander, Oerliker Park Zurich





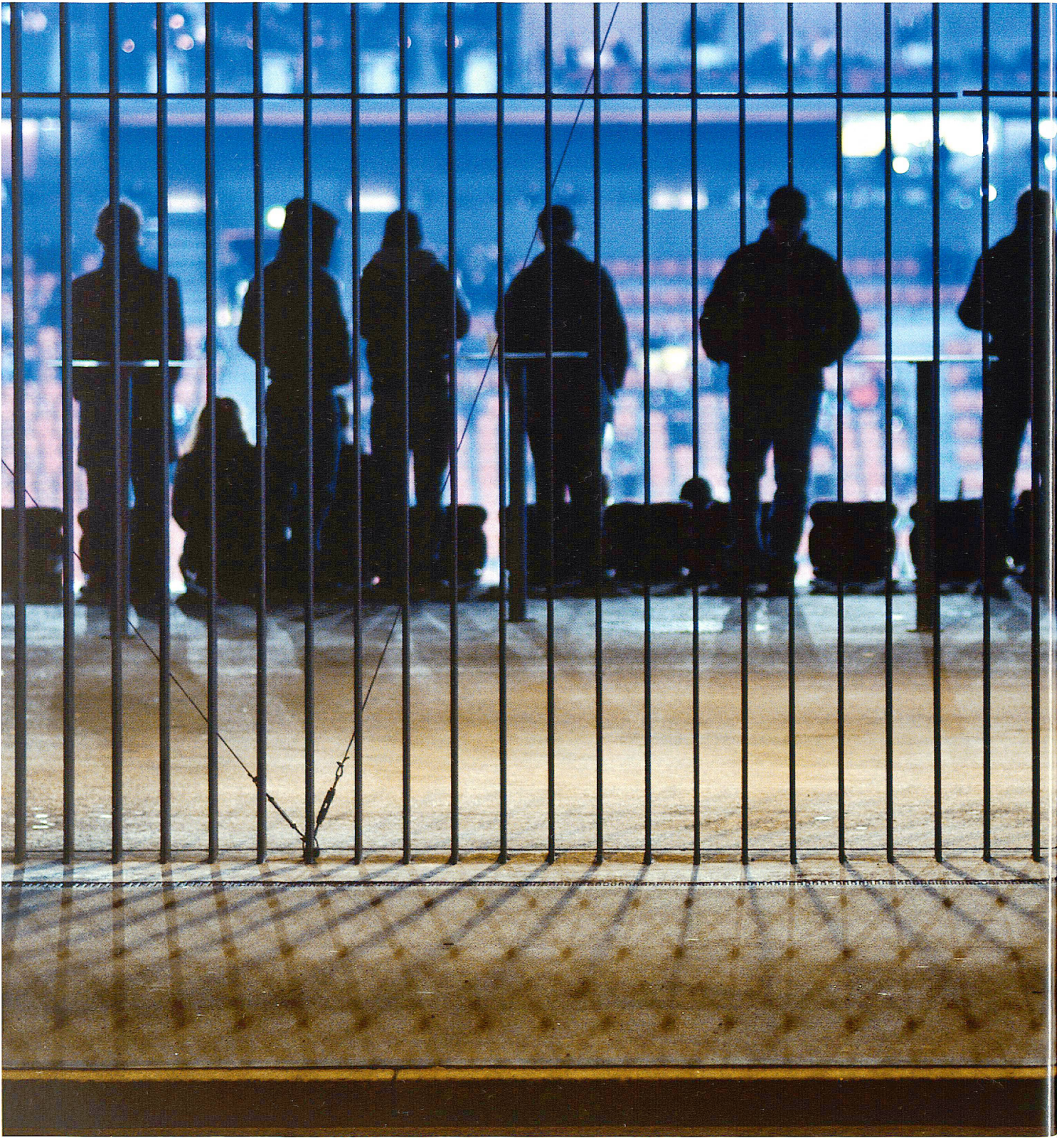
Eke Miedander, Zurich West





Eke Miedander, Quaibrücke Zurich





Eke Miedaner, Letzigrund Stadium

