

Zeitschrift: Archi : rivista svizzera di architettura, ingegneria e urbanistica = Swiss review of architecture, engineering and urban planning

Herausgeber: Società Svizzera Ingegneri e Architetti

Band: - (2008)

Heft: 3

Artikel: Tre case unifamiliari a Lugano

Autor: [s.n.]

DOI: <https://doi.org/10.5169/seals-133990>

Nutzungsbedingungen

Die ETH-Bibliothek ist die Anbieterin der digitalisierten Zeitschriften. Sie besitzt keine Urheberrechte an den Zeitschriften und ist nicht verantwortlich für deren Inhalte. Die Rechte liegen in der Regel bei den Herausgebern beziehungsweise den externen Rechteinhabern. [Siehe Rechtliche Hinweise.](#)

Conditions d'utilisation

L'ETH Library est le fournisseur des revues numérisées. Elle ne détient aucun droit d'auteur sur les revues et n'est pas responsable de leur contenu. En règle générale, les droits sont détenus par les éditeurs ou les détenteurs de droits externes. [Voir Informations légales.](#)

Terms of use

The ETH Library is the provider of the digitised journals. It does not own any copyrights to the journals and is not responsible for their content. The rights usually lie with the publishers or the external rights holders. [See Legal notice.](#)

Download PDF: 22.01.2025

ETH-Bibliothek Zürich, E-Periodica, <https://www.e-periodica.ch>

Tre case unifamiliari a Lugano

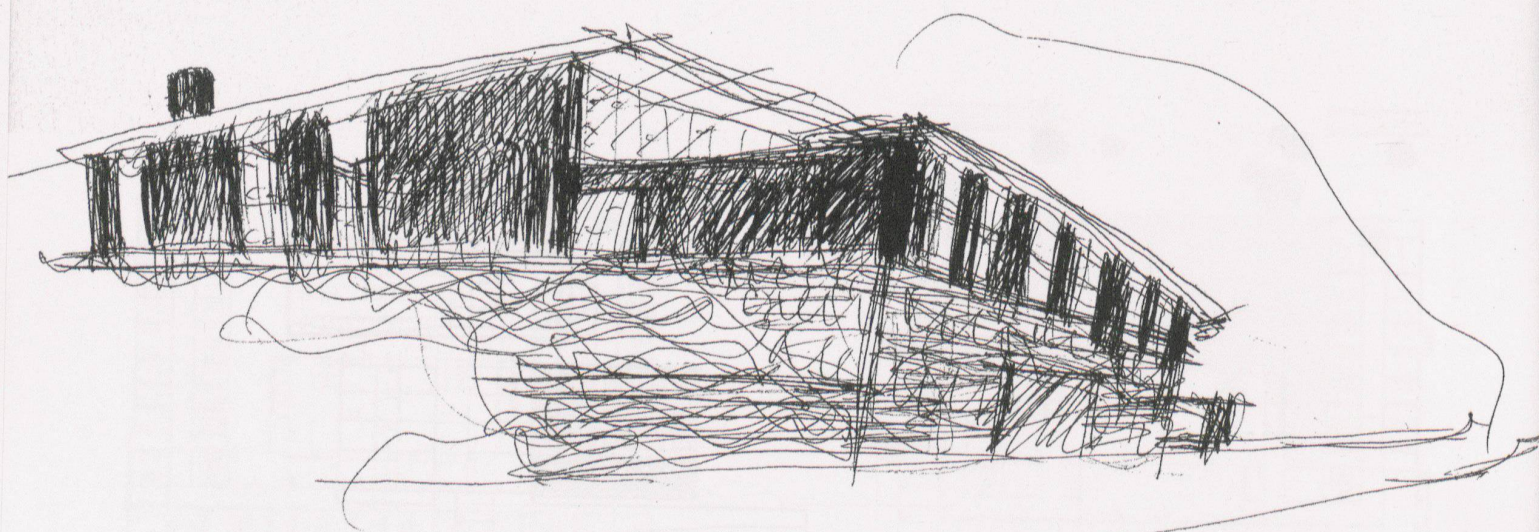
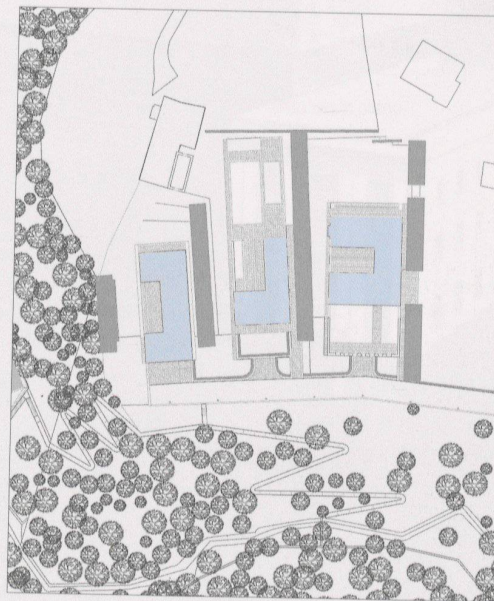
Mario Campi
Rosario Galgano
foto Henry Pierre Schulz

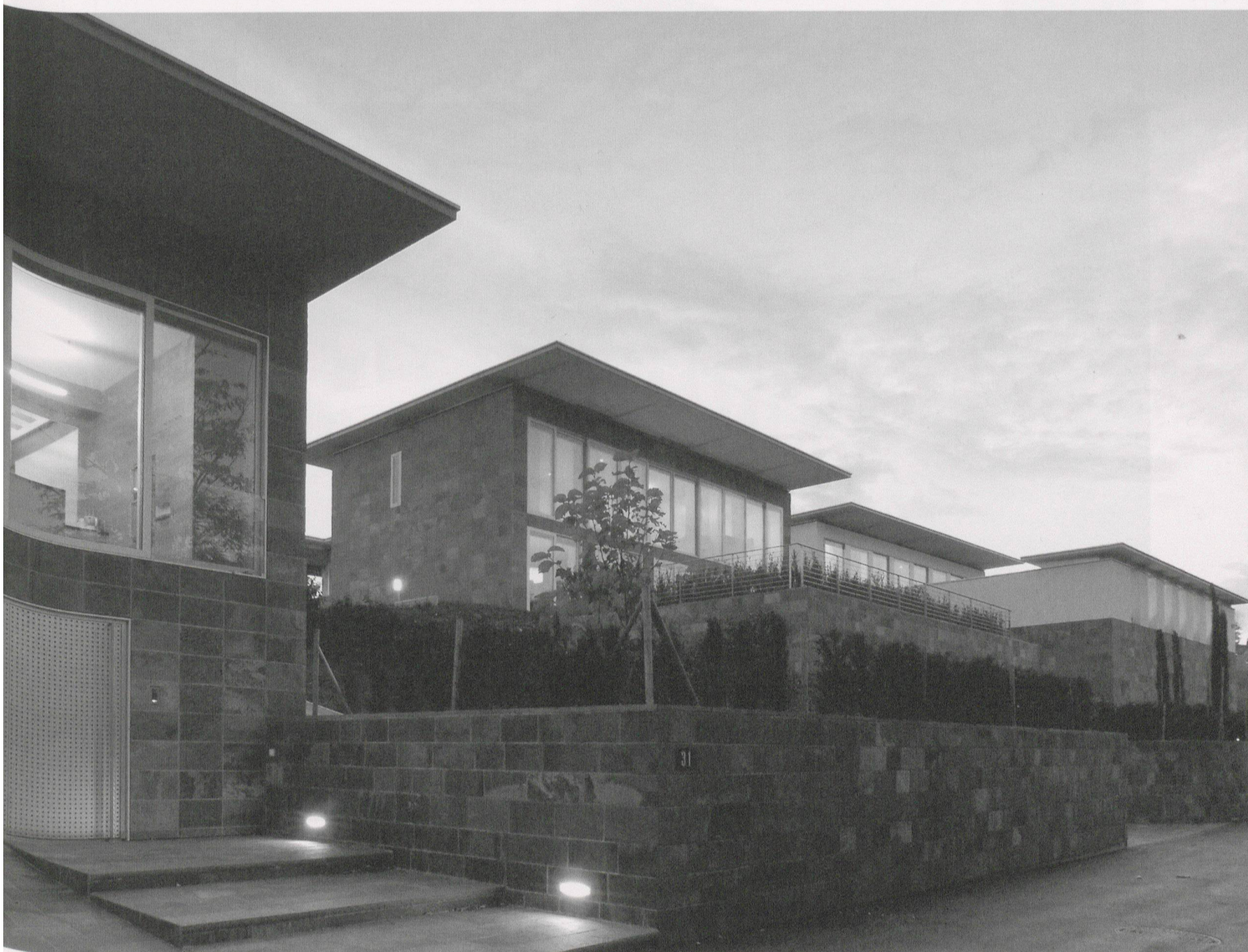
Tre case: Casa M, Casa B, e Casa C sono un assieme architettonico in un unico luogo per programmi e spazi di vita distinti.

200-400-600 i metri quadrati delle superfici di abitazione che identificano le necessità di tre famiglie diverse per composizione ed età. Le tre case (S, M, e L) sono situate in un luogo panoramico in collina, appena sopra la città.

Tipologie di pianta a corte, eleganti, semplici ed efficienti, caratterizzate da una doppia esposizione a sud e a nord, esse affacciano sul lago da un lato, dall'altro guardano il bosco e le montagne.

Le facciate sono in gran parte di pietra, contrastano gli spazi interni di legno, o tenuti a gesso bianco. Le finestre hanno una protezione solare tra i vetri.





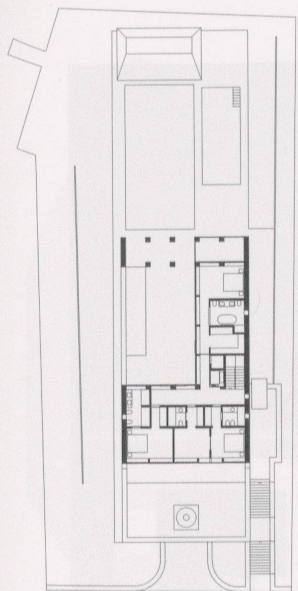
Case MBC

Tre case unifamiliari a Lugano, Svizzera

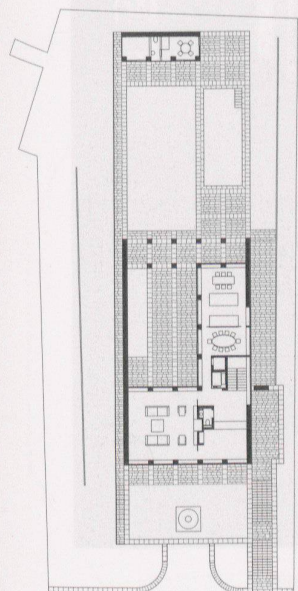
Architetti	Mario Campi Associati con Rosario Galgano
Collaboratori	Felix Günther, Urduja Rossini
Specialisti	ing. civile Enzo Vanetta ing. risc. Studio Rusconi fisica della costruz. Ivo Trümpy dir. lav. Franz Pontiggia
Date	realizzazione: 2005-2007



Case MBC



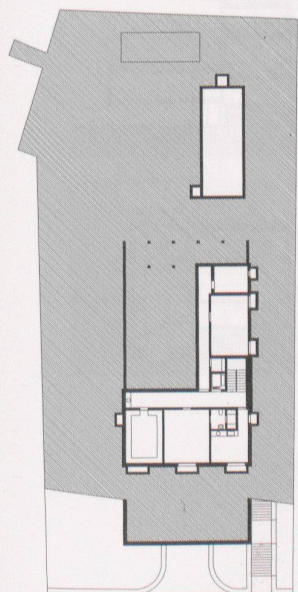
Pianta primo piano



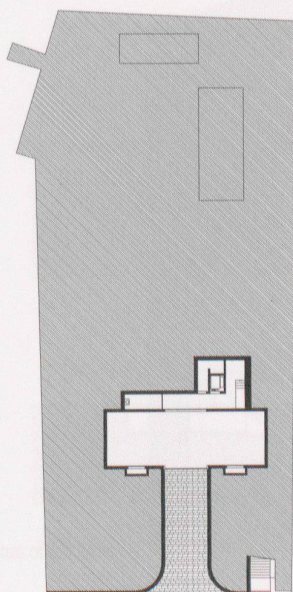
Pianta piano terra



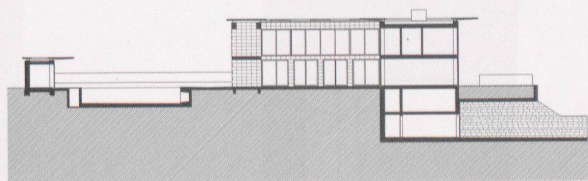
Casa B



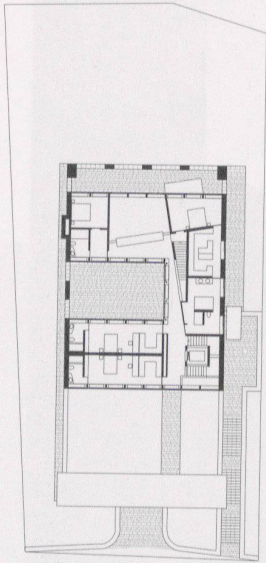
Pianta piano inferiore



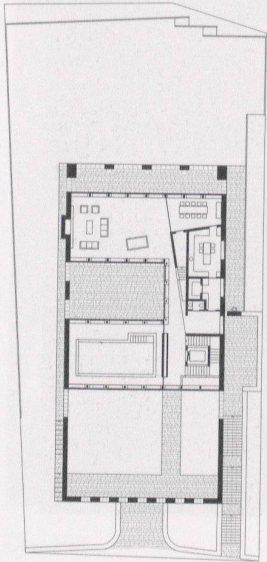
Pianta piano autorimessa



Sezione



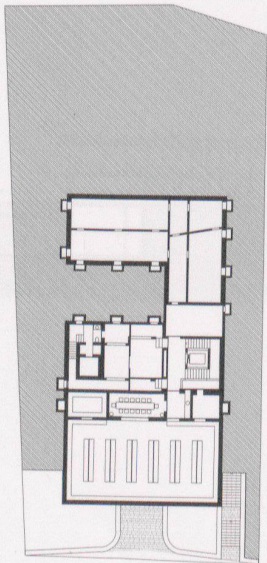
Pianta primo piano



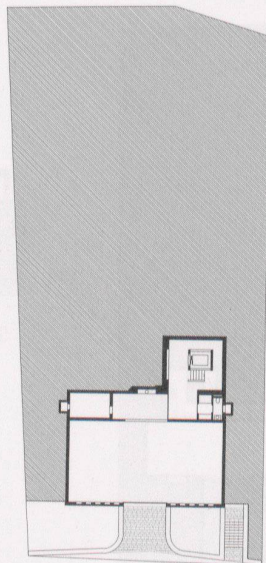
Pianta piano terra



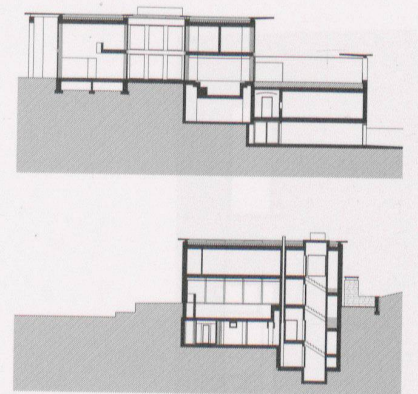
Casa C



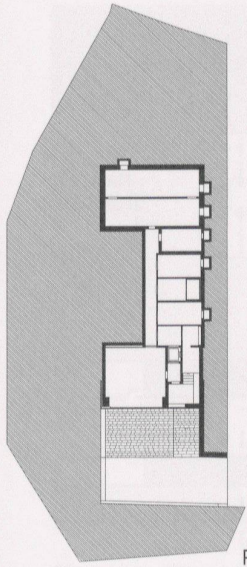
Pianta piano inferiore



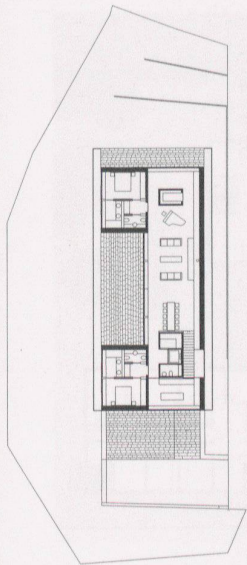
Pianta piano autorimessa



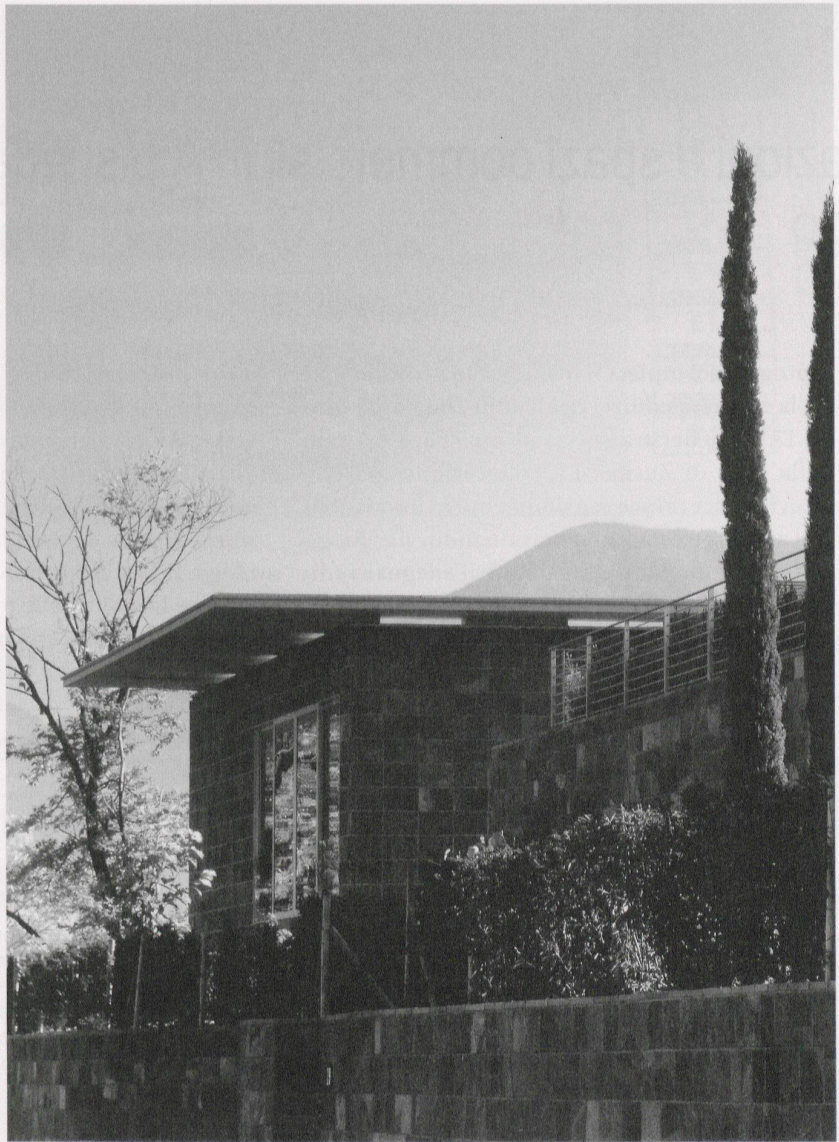
Sezioni



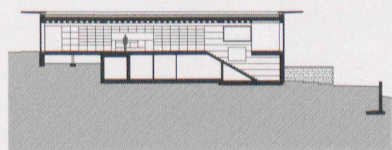
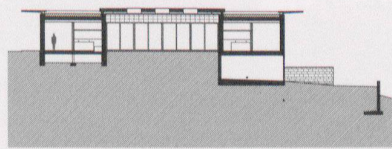
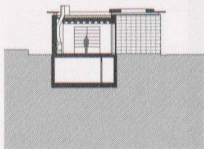
Pianta piano cantina



Pianta piano terra



Casa M



Sezioni