

**Zeitschrift:** IABSE congress report = Rapport du congrès AIPC = IVBH  
Kongressbericht

**Band:** 12 (1984)

**Artikel:** Transverse prestressing of prestressed laminated wood bridge decks

**Autor:** Batchelor, B. deV. / Dalen, K. van / Taylor, R.J.

**DOI:** <https://doi.org/10.5169/seals-12256>

### **Nutzungsbedingungen**

Die ETH-Bibliothek ist die Anbieterin der digitalisierten Zeitschriften. Sie besitzt keine Urheberrechte an den Zeitschriften und ist nicht verantwortlich für deren Inhalte. Die Rechte liegen in der Regel bei den Herausgebern beziehungsweise den externen Rechteinhabern. [Siehe Rechtliche Hinweise.](#)

### **Conditions d'utilisation**

L'ETH Library est le fournisseur des revues numérisées. Elle ne détient aucun droit d'auteur sur les revues et n'est pas responsable de leur contenu. En règle générale, les droits sont détenus par les éditeurs ou les détenteurs de droits externes. [Voir Informations légales.](#)

### **Terms of use**

The ETH Library is the provider of the digitised journals. It does not own any copyrights to the journals and is not responsible for their content. The rights usually lie with the publishers or the external rights holders. [See Legal notice.](#)

**Download PDF:** 15.03.2025

**ETH-Bibliothek Zürich, E-Periodica, <https://www.e-periodica.ch>**

## Transverse Prestressing of Prestressed Laminated Wood Bridge Decks

**B. deV. BATCHELOR**  
Prof. of Civil Eng.  
Queen's Univ.  
Kingston, ON, Canada

**K. Van DALEN**  
Prof. of Civil Eng.  
Queen's Univ.  
Kingston, ON, Canada

**R.J. TAYLOR**  
Res. Eng.  
Ontario MTC  
Downsview, ON, Canada

A form of construction which is well suited to short span bridges is the nailed-laminated wood deck. However, experience has shown the load distribution of this type of deck is severely impaired with time due to rusting and ultimate failure of the nails. A method (1) has been developed for the rehabilitation of nailed laminated wood decks which involves introduction of transverse prestressing. This method has also been successfully applied to new construction. Initially, no standard method of design existed for such an application of prestress to wood systems and studies have been undertaken (1) to assess the behaviour of such systems and to determine the appropriate values of structural parameters for use in analysis and design. As shown in the figure, the details of the prestressing system vary depending on whether it is applied to rehabilitation of existing structures or to new construction. Typical details are provided in the Ontario Highway Bridge Design Code (2) which includes a section on prestressed wood systems.

Laboratory and field studies have been conducted on the system (1). The objective of the laboratory studies was the determination of orthotropic plate parameters and prestress losses. The main variables were type of wood (hem-fir, white pine and red pine), type of wood treatment and level of initial prestress. Tests were conducted on laminated beams and plates and on axially loaded prisms formed from laminates. The results of these investigations have also been reflected in the provisions of Reference (2).

The prestressed laminated wood deck lends itself to prefabrication. Its superior load distribution over that of existing conventional nailed laminated decks has been demonstrated (1) as shown in the figure. The Hebert Creek Bridge which was rehabilitated in 1976, has been monitored regularly, and has confirmed that the system is feasible and economical. This has also been confirmed at other sites in Ontario.

### REFERENCES

1. Taylor, R.J., Batchelor, B.deV. and Van Dalen, K., "Prestressed Wood Bridges", Procs. International Conference on Short and Medium Span Bridges", Vol. 2, August 8-12, Toronto, Ontario, pp: 203-218.
2. Ontario Highway Bridge Design Code, Ontario Ministry of Transportation and Communications, Downsview, Ontario, 1983.

1118

# TRANSVERSE PRESTRESSING OF LAMINATED WOOD BRIDGE DECKS

## Existing Nailed Decks

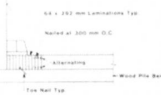


Longitudinal Deck

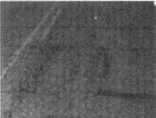


Transverse Deck

Problems - Nails are susceptible to repeated loads causing delamination. This reduces load carrying capacity & life expectancy, and increases maintenance costs.



Typical X-section Solution - Transverse Prestressing



Typical Delamination



KABAIGON R.(1981) Rehabilitation



SIOUX NARROWS(1982) Deck Replacement

## RESEARCH AND CONSTRUCTION

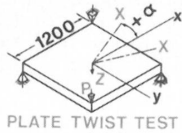
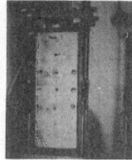
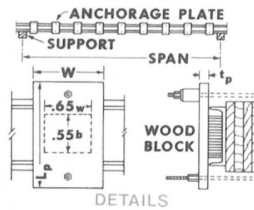
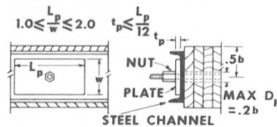
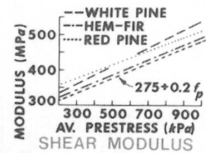
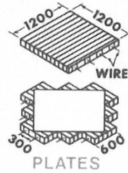
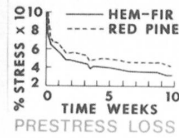


PLATE TWIST TEST



TEST RIG

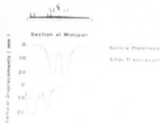


DETAILS

## Load Testing



Herbert Crk. (1976)



Vertical Deflections

Results - 100% Increase in Capacity

## Other Applications



FOX LAKE Bridge  
New prestressed laminated wood rigid frame. Built 1981, Sudbury, Ontario.

AGUASABON R. Bridge  
New transversely laminated, prestressed wood. Segmental Construction. Terrace Bay, Ontario 1983.



VICTORIA ISLAND Bridge. Deck replacement with prestressed wood panels. Ontario Hydro Ottawa, 1984.

CONCLUSION - PRESTRESSED WOOD DECKS FEASIBLE