

**Zeitschrift:** IABSE congress report = Rapport du congrès AIPC = IVBH  
Kongressbericht

**Band:** 12 (1984)

**Artikel:** The Vancouver ALRT

**Autor:** Taylor, W.

**DOI:** <https://doi.org/10.5169/seals-12277>

### **Nutzungsbedingungen**

Die ETH-Bibliothek ist die Anbieterin der digitalisierten Zeitschriften. Sie besitzt keine Urheberrechte an den Zeitschriften und ist nicht verantwortlich für deren Inhalte. Die Rechte liegen in der Regel bei den Herausgebern beziehungsweise den externen Rechteinhabern. [Siehe Rechtliche Hinweise.](#)

### **Conditions d'utilisation**

L'ETH Library est le fournisseur des revues numérisées. Elle ne détient aucun droit d'auteur sur les revues et n'est pas responsable de leur contenu. En règle générale, les droits sont détenus par les éditeurs ou les détenteurs de droits externes. [Voir Informations légales.](#)

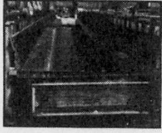
### **Terms of use**

The ETH Library is the provider of the digitised journals. It does not own any copyrights to the journals and is not responsible for their content. The rights usually lie with the publishers or the external rights holders. [See Legal notice.](#)

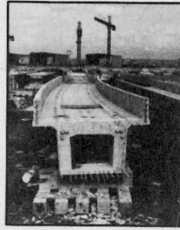
**Download PDF:** 15.03.2025

**ETH-Bibliothek Zürich, E-Periodica, <https://www.e-periodica.ch>**

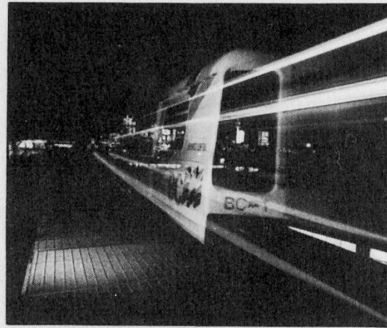
# THE VANCOUVER A.L.R.T.



Adjustable Beam Forms / Vertical & Horizontal Curves And Superelevation



Storage For 450 Beams Precedes Site Construction



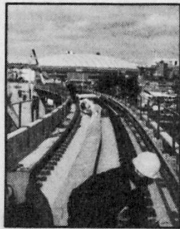
Aesthetic Design Is Important To This Transit System

**B. C. TRANSIT**  
OWNER

The Advanced Light Rapid Transit (ALRT) features a close-toleranced, elevated, precast, prestressed concrete system. A demonstration section constructed (1.1 km.) during 1983 illustrated its capabilities. Currently, the 21.3 km. dual-lane system is nearly 80% complete. The ALRT system will be finished for EXPO '86.



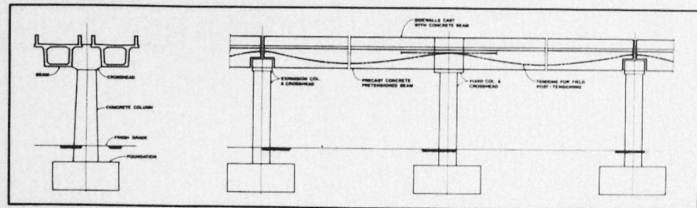
Street & Bridge Loadings From 100 Tonne Beams Satisfied By Custom-Made Transporters



Accuracy In Beam Fabrication Permits Meeting Tight System Tolerances



Beams Erected At The Rate Of Six Per Day



Typical Two-Span Structure