

Zeitschrift: IABSE bulletin = Bulletin AIPC = IVBH Bulletin
Band: 12 (1988)
Heft: B-47: IABSE bulletin

Vereinsnachrichten: Durability of structures: IABSE symposium, Lisbon, Portugal,
September 6-8, 1989

Nutzungsbedingungen

Die ETH-Bibliothek ist die Anbieterin der digitalisierten Zeitschriften. Sie besitzt keine Urheberrechte an den Zeitschriften und ist nicht verantwortlich für deren Inhalte. Die Rechte liegen in der Regel bei den Herausgebern beziehungsweise den externen Rechteinhabern. [Siehe Rechtliche Hinweise.](#)

Conditions d'utilisation

L'ETH Library est le fournisseur des revues numérisées. Elle ne détient aucun droit d'auteur sur les revues et n'est pas responsable de leur contenu. En règle générale, les droits sont détenus par les éditeurs ou les détenteurs de droits externes. [Voir Informations légales.](#)

Terms of use

The ETH Library is the provider of the digitised journals. It does not own any copyrights to the journals and is not responsible for their content. The rights usually lie with the publishers or the external rights holders. [See Legal notice.](#)

Download PDF: 12.04.2025

ETH-Bibliothek Zürich, E-Periodica, <https://www.e-periodica.ch>

2. Durability of Structures IABSE Symposium, Lisbon, Portugal, September 6 – 8, 1989

The Call for papers for the next Symposium of IABSE has drawn great interest. 330 abstracts were submitted to the Scientific Committee, which met on October 21, 1988, in Lisbon, to select the abstracts for the Technical Programme. The task of the committee, chaired by Mr. H.-H. Gotfredsen, was not an easy one due to the number of excellent papers received. As indicated in the Preliminary Invitation, the format will be the same for all 4 sessions, dealing with **Durability of Structures** under the following aspects:

- General Durability Aspects
- Influence of Material Properties
- Aspects of Design and Construction
- Assessment and Maintenance of Structures.

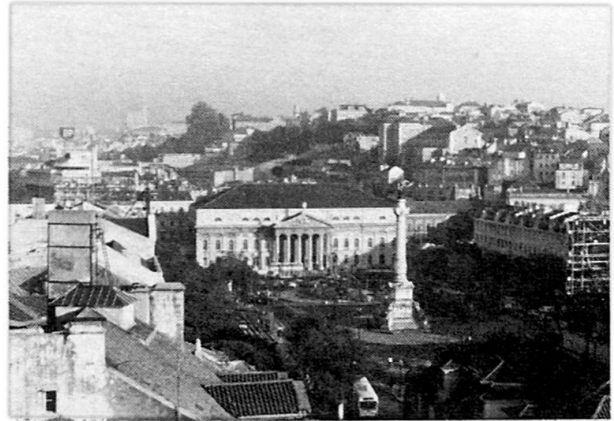
Each session will start with keynote lectures, followed by parallel sessions with presentations of participants. Also a concurrent workshop will be conducted on:

- Lifespan Considerations
- In-situ Inspection
- Durability of Suspended Structures
- Joints, Bearings and Drainage.

Poster sessions have become an asset at IABSE conferences, and will again be one of the best opportunities for high level and personal exchange of views on case studies in durability of structures.

A commercial exhibition will complete the technical programme.

International associations in the field of structural engineering have contributed to the programme with suggestions and nominations for Keynote Lecturers. Positive replies and contributions have been received from CEB, CIB, FIP and RILEM.

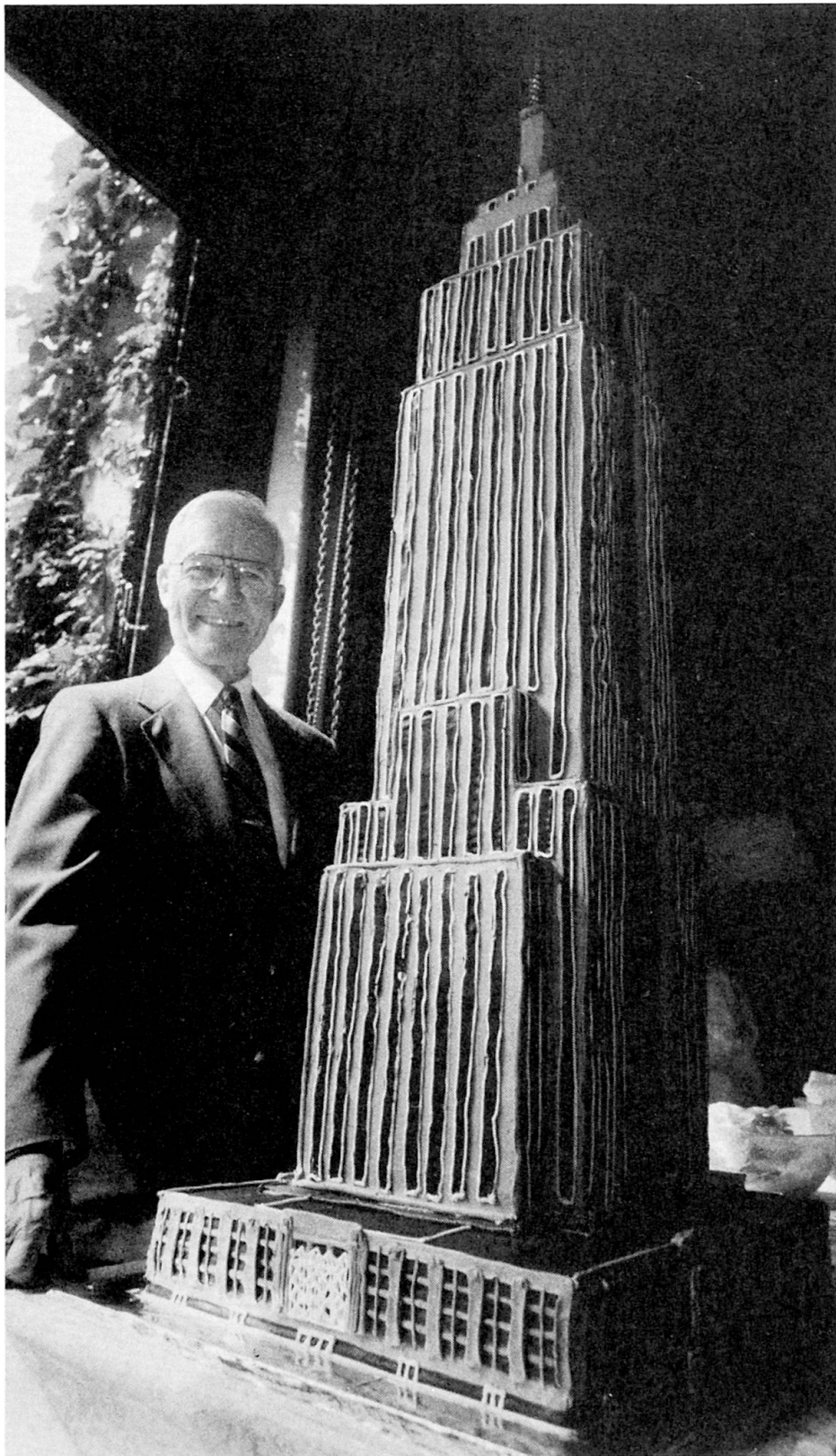


The Final Invitation, to be issued in January 1989, will be mailed to all those who have shown their interest in participating in the Symposium. The Organizing Committee is preparing a unique social and cultural programme which will complete the already very promising technical programme.

The beginning of September is still part of the peak season in Lisbon and in Portugal, therefore members are encouraged to register early for the Symposium. Over 500 participants are expected in Lisbon: thanks to the topic, the location, and the recent history of IABSE Symposia (Tokyo 1986 and Paris-Versailles 1987, each with almost 700 participants) reigns an optimistic mood among the volunteers and staff preparing the event.



*Checking meeting rooms after the Scientific Committee meeting, October 21, 1988.
From left to right: R. Sagelsdorff, Secretary SC, S. Pompeu-Santos, Member OC, V. Monteiro, Member SC and Co-Chairman OC, J. Almeida-Fernandes, Member OC.*



Happy birthday!

Lehigh University civil engineering professor Lynn S. Beedle admires a 4-foot cake representing the Empire State Building, baked to commemorate the 20th anniversary of the Council on Tall Building and Urban Habitat. The council is based at Lehigh. The idea for the council was stimulated at the 1968 Congress of IABSE.

(Photo Kittek)