

Zeitschrift: IABSE structures = Constructions AIPC = IVBH Bauwerke
Band: 4 (1980)
Heft: C-13: Sports halls and stadia

Artikel: The Grandstand at Leopardstown Racecourse, Dublin (Ireland)
Autor: Bobrowski, J.
DOI: <https://doi.org/10.5169/seals-16534>

Nutzungsbedingungen

Die ETH-Bibliothek ist die Anbieterin der digitalisierten Zeitschriften. Sie besitzt keine Urheberrechte an den Zeitschriften und ist nicht verantwortlich für deren Inhalte. Die Rechte liegen in der Regel bei den Herausgebern beziehungsweise den externen Rechteinhabern. [Siehe Rechtliche Hinweise.](#)

Conditions d'utilisation

L'ETH Library est le fournisseur des revues numérisées. Elle ne détient aucun droit d'auteur sur les revues et n'est pas responsable de leur contenu. En règle générale, les droits sont détenus par les éditeurs ou les détenteurs de droits externes. [Voir Informations légales.](#)

Terms of use

The ETH Library is the provider of the digitised journals. It does not own any copyrights to the journals and is not responsible for their content. The rights usually lie with the publishers or the external rights holders. [See Legal notice.](#)

Download PDF: 17.03.2025

ETH-Bibliothek Zürich, E-Periodica, <https://www.e-periodica.ch>



2. The Grandstand at Leopardstown Racecourse, Dublin (Ireland)

Owner: Leopardstown Club

Architect: Howard V. Lobb & Partners

Engineer: Jan Bobrowski and Partners

Contractor: Hugh O'Neill & Co Ltd

Precasting:

*Ardglass Ltd – Riversdale Concrete Products –
Roconcrete Ltd – Wall Units Ltd*

Completion date: 1971

The grandstand, situated in a magnificent rural setting, consists of two 4 storey buildings, one housing the Tote betting hall and facilities, the other being the grandstand itself. The latter is an H-framed structure with a cantilevered roof as shown in Figure 1a. The roof consists of precast prestressed components, each component being the full length shown on the drawing and 1.9 m in width. In cross-section each roof component is curved so that it approximates to a quarter of a circle in shape, with stiffening rib forming a spine along its centre, the circular shape being 63 mm in thickness as shown in Figure 1b. Figure 1b also shows the method of anchoring the cantilevers and stressing them transversely.

On the opposite elevation – which is equally important since it faces the paddock and parade ring – the betting hall building has viewing galleries carried on T-shaped white concrete components, and above this

level, a colonnaded facade of precast white concrete frames 8.5 m in height, forming a series of arches along the top of the building with a recessed band of concrete with a ribbed surface halfway down. Principal dimensions and data for the Leopardstown grandstand are listed in the table.

An interesting innovation which has contributed to this good result is that to control tensile stresses due to temperature and so eliminate cracking which would mar the highly-polished surfaces, a limited amount of post-tensioning was introduced along the edges of the viewing balconies.

Attention should perhaps be drawn to the figures given in the table for the strengths specified for the lightweight concrete. Solite aggregate was used and a high level of strength was consistently achieved. Another interesting technique is the use of hanging cladding panels, consisting of precast, prestressed "planks". These panels contrast with cement-painted walling. The technique of using prestressed planking has been extended to permanent formwork and most of the beams cast in place in the grandstand have permanent shuttering similar in construction to the cladding panels. For both applications, the finish on the planks is of Galway marble aggregate with deeply-ground exposed surfaces. The same finish is used for the precast T-shaped columns and the frames of the colonnade.

(J. Bobrowski)



Leopardstown Grandstand

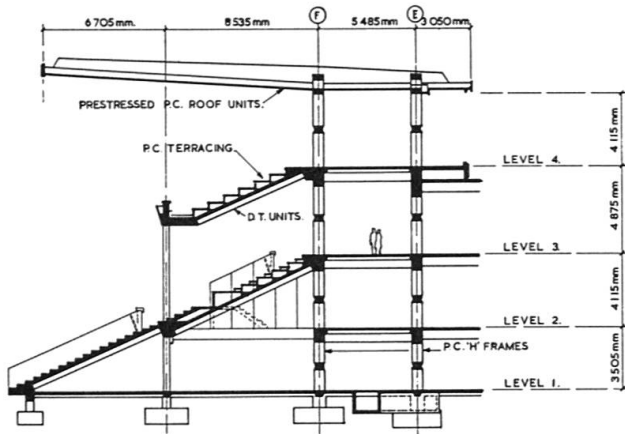


Fig. 1(a) Typical Cross Section

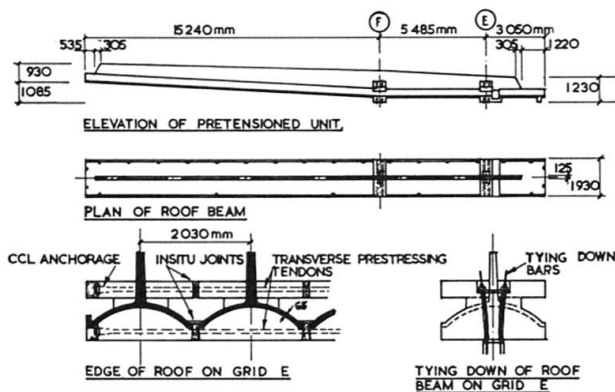
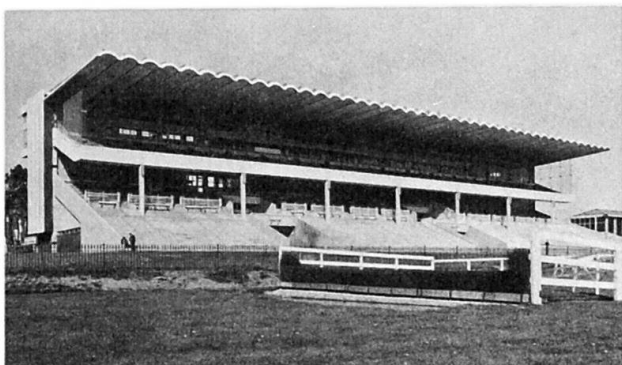


Fig. 1(b)



Leopardstown Grandstand

TABLE – Data for Leopardstown Grandstand

Overall size of structure	97.5 m × 55 m
Floor area of stand	9,300 m ²
Number of people accommodated:	
reserved enclosure	5,500
grandstand enclosure	3,000

Structure of stand

H-frames:	
centres	5.5 m
cross-section of columns	610 × 460 mm
cross-section of cross member	460 × 460 mm
28 day cube strength of concrete	52.2 N/mm ²

Floors:

Double tees:	
width	2.42 m
centre of ribs	1.21 m
typical depths	559 mm
corresponding spans	12.24 m
corresponding prestressing:	
Dyform	six 12.7 mm dia
28 day cube strength of concrete	63 N/mm ²

Roof:

length of cantilever	15.25 m
length of roof component	23.8 m
width of roof component	1.9 m
width of in situ joint between components	100 mm
depth of spine beam	530-925 mm

Concrete for roof components:

density	1,873 kg/m ³
aggregate: cement ratio	1.99
water: cement ratio	0.4
percentage of sharp sand in aggregate	39
type of coarse aggregate	Solite (expanded slate)

crushing strength:	
7 days	42 N/mm ²
28 days	54.6 N/mm ²
typical weight of one component	15.230 kg
typical prestressing of one component:	
Dyform	14 strands

Hanging cladding panels:

width	1.22 m
thickness	63 mm
length	up to 15.5 m
prestressing	16 × 5 mm wire

Frames at rear elevation:

number of frames	15
height	8.54 m
width	4.04 m
weight	10,680 kg

T-shaped columns beneath colonnade:

maximum length	4.57 m
span	6.1 m