

Zeitschrift: IABSE structures = Constructions AIPC = IVBH Bauwerke
Band: 5 (1981)
Heft: C-16: Structures in Great Britain

Werbung

Nutzungsbedingungen

Die ETH-Bibliothek ist die Anbieterin der digitalisierten Zeitschriften. Sie besitzt keine Urheberrechte an den Zeitschriften und ist nicht verantwortlich für deren Inhalte. Die Rechte liegen in der Regel bei den Herausgebern beziehungsweise den externen Rechteinhabern. [Siehe Rechtliche Hinweise.](#)

Conditions d'utilisation

L'ETH Library est le fournisseur des revues numérisées. Elle ne détient aucun droit d'auteur sur les revues et n'est pas responsable de leur contenu. En règle générale, les droits sont détenus par les éditeurs ou les détenteurs de droits externes. [Voir Informations légales.](#)

Terms of use

The ETH Library is the provider of the digitised journals. It does not own any copyrights to the journals and is not responsible for their content. The rights usually lie with the publishers or the external rights holders. [See Legal notice.](#)

Download PDF: 17.03.2025

ETH-Bibliothek Zürich, E-Periodica, <https://www.e-periodica.ch>



ARBED

Steel beams from ARBED

ARBED - manufacturers of the world's largest universal wide-flanged beam: 1000 x 450 mm. And some of the smallest: down to a mere 80 x 42 mm. Between these extremes you'll find the most comprehensive structural steel product range anywhere. Steel qualities conforming to all international standards.

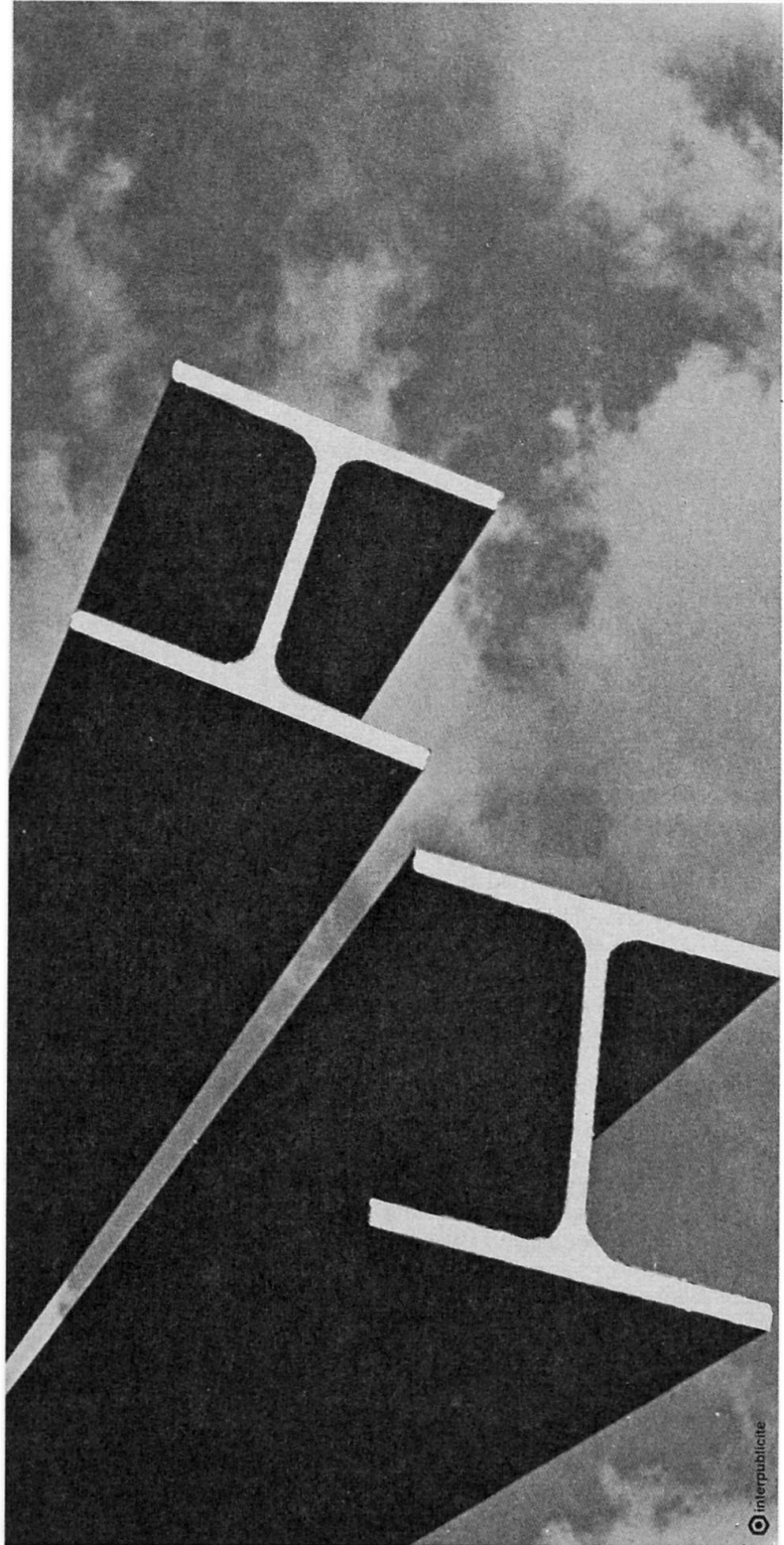
Fritenar, Krytenar, arcorox, Mercor, Krybar... steel grades with exceptional properties: ideal weldability, weather and corrosion resistance and high yield point.

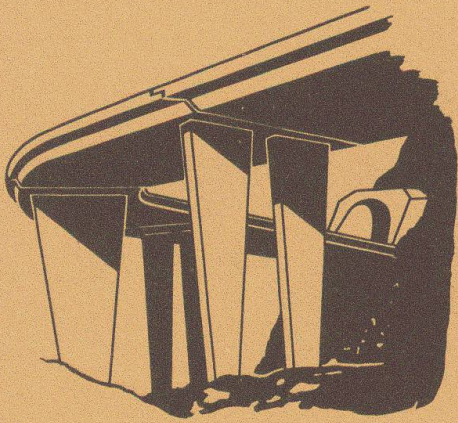
ARBED structural steel combined with ARBED know-how and engineering solve even the most intractable building problems. Worldwide.

Sales:

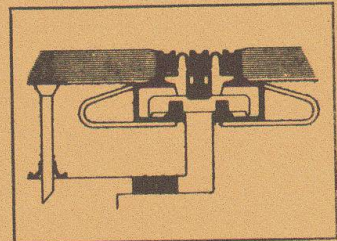
TRADE ARBED

**Société Anonyme
Boîte Postale 1802
L-Luxembourg**

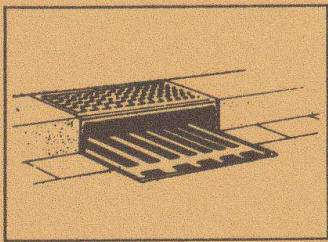




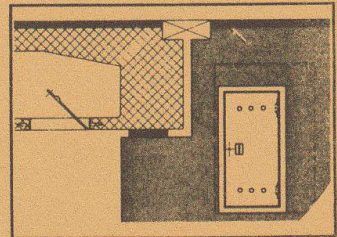
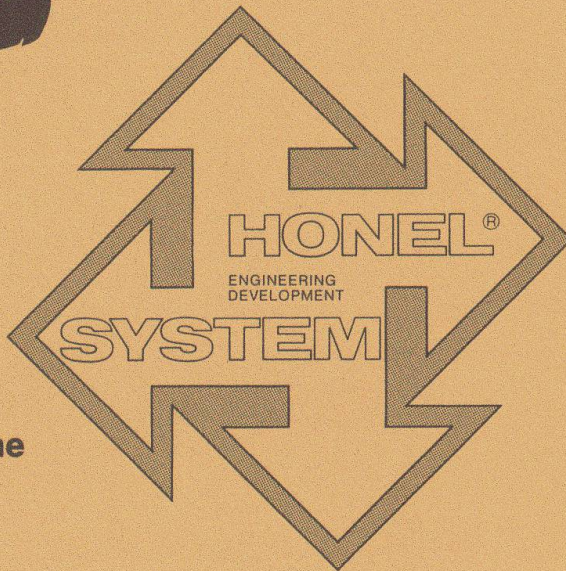
**Belags-Sickerwasser-
Ableiter**
Subsurface Seepage.
**Evacuations des eaux
et aérations.**
*Ductos de agua de
filtración para calzadas.*



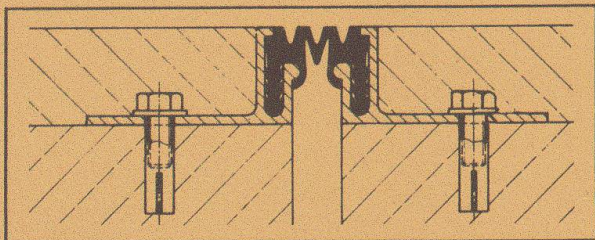
**Fahrbahn-Übergangs-
Konstruktionen.**
Expansion joints.
**Raccordements de
chausées**
*Sistemas de juntas
de dilatación.*



Entwässerungs-Systeme
Surface drainage
Evacuations des eaux
Pozos de drenaje

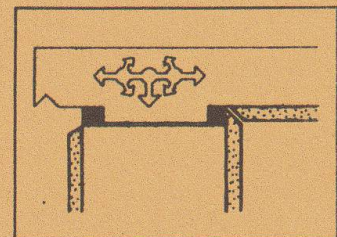


Hohlraumschalungen
Einstiegsluken + Türen
Formwork + Moulds
Access openings
Ouvertures d'entrée
Aberturas de entrada

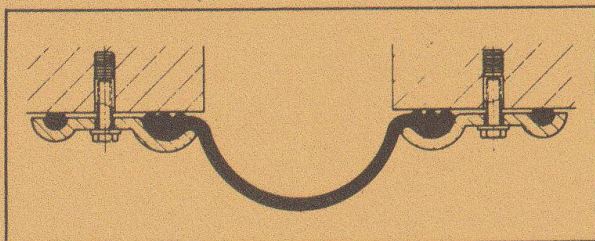


Fugendichtungen im Hoch- + Tiefbau
Joint seals + Joint profilés
Sellos para juntas

Auflager
Structural
Bearings
Appuis
Apoyos

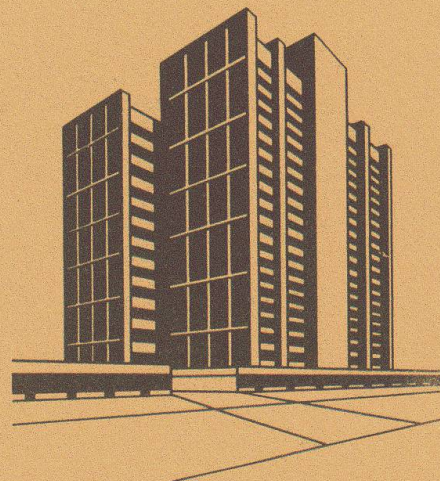


Pressen + Pumpen
Hydraulic jacks
Verins + Pompes
Prensas + bombas



heinz honegger ag

CH-8427 Rorbas ZH Switzerland
Tel. 01 - 865 11 77, Telex 52844



Survey today – the future way: Wild Tachymat TC1

The complete survey system for measuring, recording and transferring data to the computer. Angle and distance measurement are fully electronic. The Tachymat measures and displays: Hz and V angles, slope and horizontal distance, difference in height, height above datum, and coordinates. For setting out, it tracks horizontal angle and horizontal distance. With the recording unit attached, measured data, code and other information are recorded. Over 1800 points/blocks of information can be recorded on a cassette. And as cassettes can be inserted as required, the capacity is limitless. It's the most flexible, cost-effective

recording and data-storage system. The Tachymat is a field instrument. Rugged, reliable, accurate, designed for the surveyor. The latest technology coupled with Wild's years of experience in manufacturing surveying equipment see to that. And it's super to operate; just touch a key to measure and another to record. The Wild Tachymat TC1. Available now for today's surveyor. Ready for tomorrow's requirements.

For colour brochure Wild TC1

Send this coupon to your next Wild representative or directly to Wild Heerbrugg Ltd., CH-9435 Heerbrugg, Switzerland.

Name _____

Company _____

Address _____

SBb 11-1

Wild Heerbrugg Ltd.
CH-9435 Heerbrugg, Switzerland

**New: TC1L
with 5000 m range**

