

**Zeitschrift:** IABSE structures = Constructions AIPC = IVBH Bauwerke  
**Band:** 6 (1982)  
**Heft:** C-22: Water towers

## Werbung

### Nutzungsbedingungen

Die ETH-Bibliothek ist die Anbieterin der digitalisierten Zeitschriften. Sie besitzt keine Urheberrechte an den Zeitschriften und ist nicht verantwortlich für deren Inhalte. Die Rechte liegen in der Regel bei den Herausgebern beziehungsweise den externen Rechteinhabern. [Siehe Rechtliche Hinweise.](#)

### Conditions d'utilisation

L'ETH Library est le fournisseur des revues numérisées. Elle ne détient aucun droit d'auteur sur les revues et n'est pas responsable de leur contenu. En règle générale, les droits sont détenus par les éditeurs ou les détenteurs de droits externes. [Voir Informations légales.](#)

### Terms of use

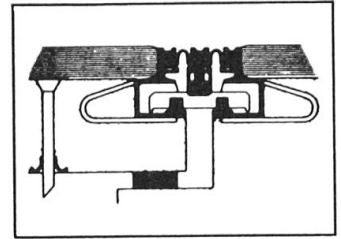
The ETH Library is the provider of the digitised journals. It does not own any copyrights to the journals and is not responsible for their content. The rights usually lie with the publishers or the external rights holders. [See Legal notice.](#)

**Download PDF:** 22.01.2025

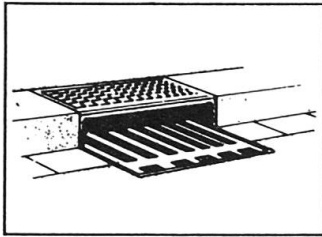
**ETH-Bibliothek Zürich, E-Periodica, <https://www.e-periodica.ch>**



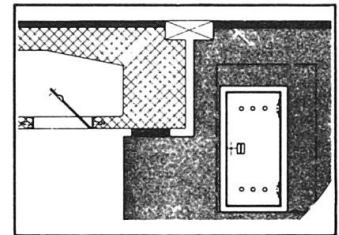
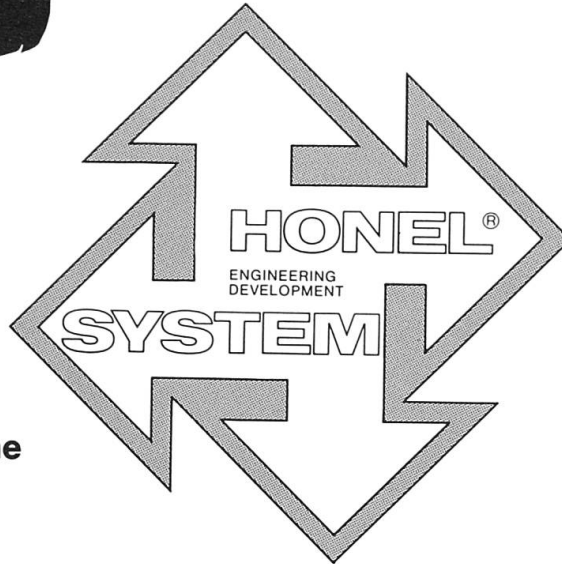
**Belags-Sickerwasser-  
Ableiter**  
*Subsurface Seepage.*  
**Evacuacions des eaux  
et aérations.**  
*Ductos de agua de  
filtración para calzadas.*



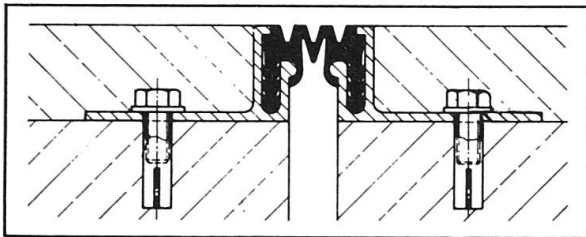
**Fahrbahn-Übergangs-  
Konstruktionen.**  
*Expansion joints.*  
**Raccordements de  
chausées**  
*Sistemas de juntas  
de dilatación.*



**Entwässerungs-Systeme**  
*Surface drainage*  
**Evacuacions des eaux**  
*Pozos de drenaje*

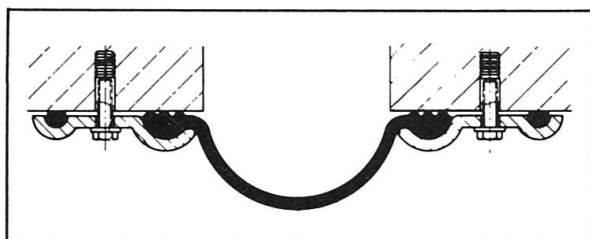
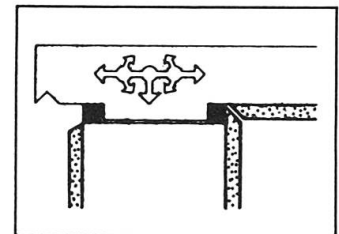


**Hohlraumschalungen**  
**Einstiegsluken + Türen**  
*Formwork + Moulds*  
*Access openings*  
**Ouvertures d'entrée**  
*Aberturas de entrada*



**Fugendichtungen im Hoch- + Tiefbau**  
*Joint seals + Joint profilés*  
**Sellos para juntas**

**Auflager**  
*Structural  
Bearings*  
**Appuis**  
*Apoyos*



**Pressen + Pumpen**  
*Hydraulic jacks*  
**Verins + Pompes**  
*Prensas + bombas*



**heinz honegger ag**

CH-8427 Rorbas ZH Switzerland  
Tel. 01 - 86511 77, Telex 52844

**Vertretungs- und Lizenzvergabe:**

Honel-Holding SA  
Sonnmattstrasse 6  
CH-8180 Bülach, Switzerland  
Phone 01/860 89 43



# First-order evolution in geodesy and industry

Modern technology has come up with a new precision level, the **Wild N3**, designed to bring the highest accuracy to the most varied tasks: first-order levelling for geodetic control, deformation measurements, determining subsidence and monitoring crustal movements. It's perfect too for industry and laboratories: for checking, aligning and positioning machinery, and for measuring inclinations.

The powerful **panfocal telescope** has over 40× magnification at normal sighting distances, yet it will focus to a scale **only 30 cm (12 inches)** from the objective. The field of view widens at short distances. And it's an alignment telescope with remarkable stability of the line of sight.

With the calibrated tilting screw, small angles and changes in inclination can be measured with micro-

meter accuracy for optical tooling purposes as well as for river crossings in geodesy. The autocollimation eyepiece converts the N3 into an autocollimation instrument; the laser eyepiece transforms it into a laser level.

The **Wild N3** is an ultramodern precision level. From its predecessor it has inherited its unmatched accuracy – a standard deviation of  $\pm 0.2$  mm for 1 km double run levelling – and its absolute reliability.

#### For colour brochure Wild N3

Send this coupon to your next Wild representative or directly to Wild Heerbrugg Ltd., CH-9435 Heerbrugg, Switzerland.

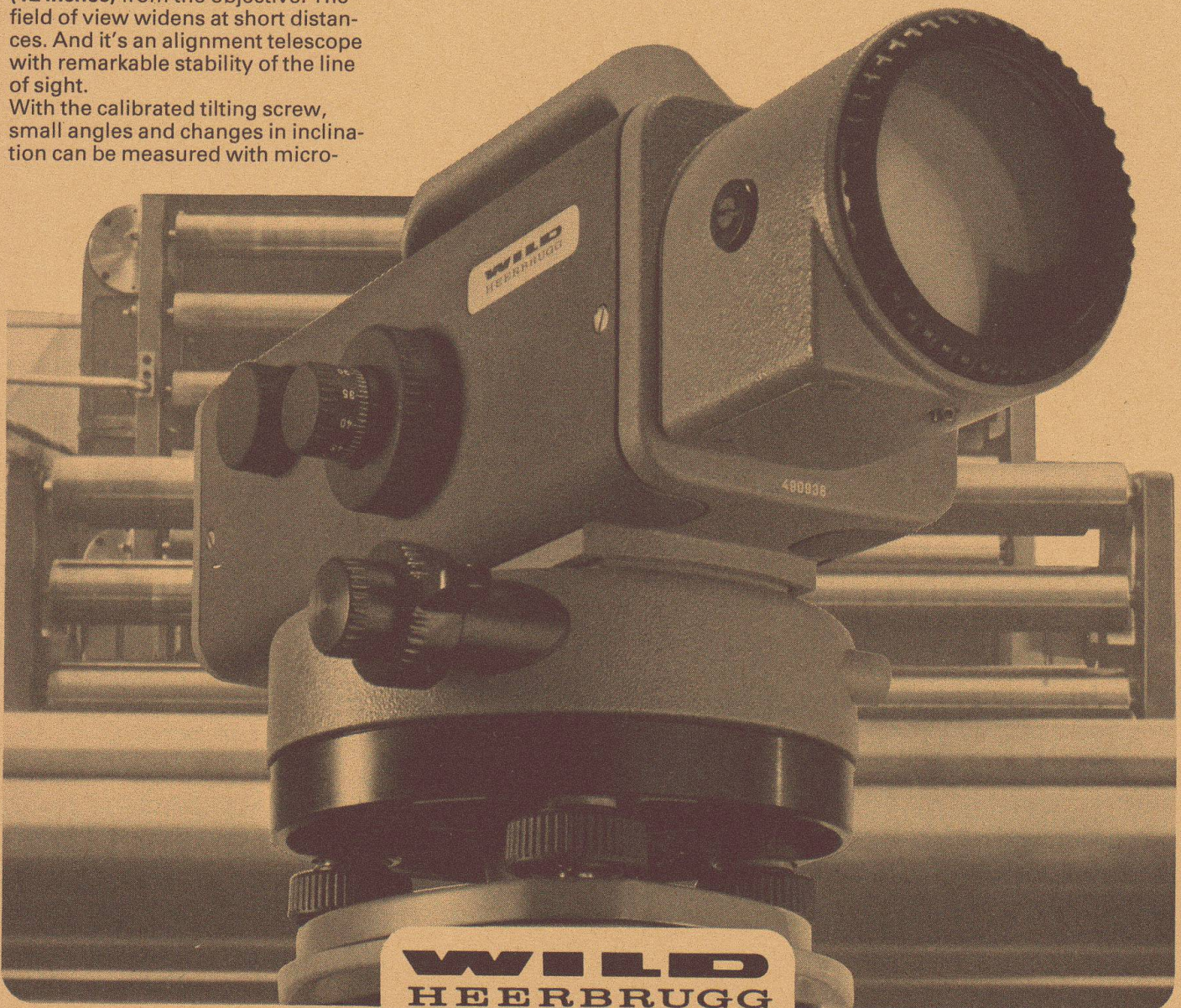
Name \_\_\_\_\_

Company \_\_\_\_\_

Address \_\_\_\_\_

**Wild Heerbrugg Ltd.**  
CH-9435 Heerbrugg, Switzerland

IVB 9-2



Original <sup>Swiss made</sup>  
**SCHMIDT**

Use the ORIGINAL

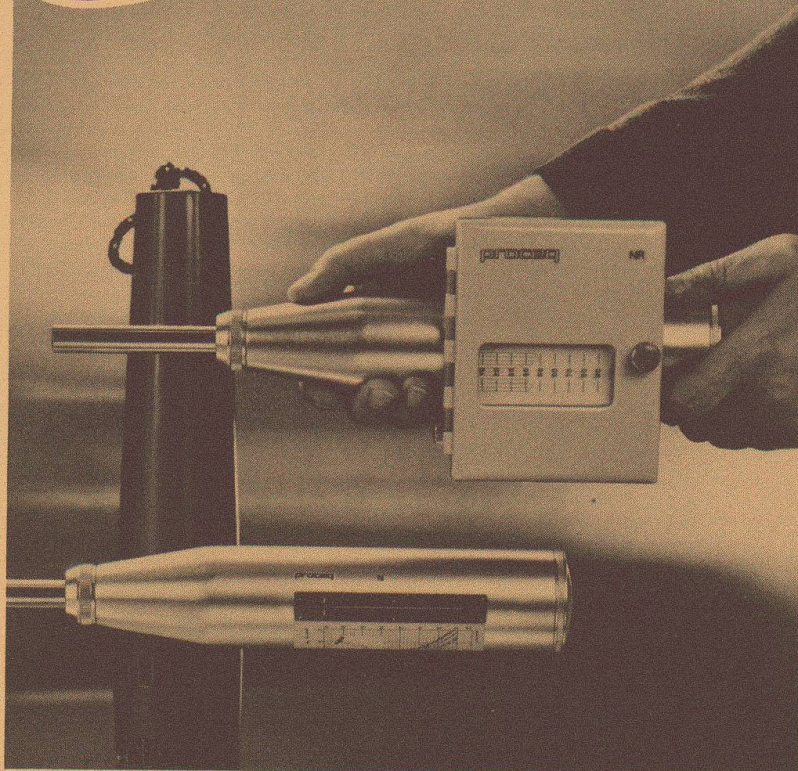
## Concrete Test Hammer SCHMIDT

Models N and NR for non-destructive testing of the concrete quality in the finished structure

Original <sup>Swiss made</sup>  
**SCHMIDT**

stands for:

- constant high product quality – Swiss Finish
- spare parts guarantee, even for older instruments
- possibility of accurate calibration
- calibration on assured and unchanged basis for 25 years



a PROCEQ product from Switzerland

profo  
meter

## Reinforcement Detector PROFOMETER

PROFOMETER for precise and non-destructive testing of reinforcement in completed concrete structures.

- Determination of position, direction and quantity of main and secondary reinforcement
- Exact measurement of concrete cover up to 120 mm, even with densely packed reinforcement
- Determining the locations suitable for drilling dowel holes
- Estimates of rod diameter

a PROCEQ product from Switzerland

PROCEQ SA  
Riesbachstr. 57 Tel. 01/47 78 00  
CH-8034 Zürich Telex 53357 proce ch

**proceq**

