

**Zeitschrift:** IABSE structures = Constructions AIPC = IVBH Bauwerke  
**Band:** 7 (1983)  
**Heft:** C-28: Recent structures: Part II

## **Werbung**

### **Nutzungsbedingungen**

Die ETH-Bibliothek ist die Anbieterin der digitalisierten Zeitschriften. Sie besitzt keine Urheberrechte an den Zeitschriften und ist nicht verantwortlich für deren Inhalte. Die Rechte liegen in der Regel bei den Herausgebern beziehungsweise den externen Rechteinhabern. [Siehe Rechtliche Hinweise.](#)

### **Conditions d'utilisation**

L'ETH Library est le fournisseur des revues numérisées. Elle ne détient aucun droit d'auteur sur les revues et n'est pas responsable de leur contenu. En règle générale, les droits sont détenus par les éditeurs ou les détenteurs de droits externes. [Voir Informations légales.](#)

### **Terms of use**

The ETH Library is the provider of the digitised journals. It does not own any copyrights to the journals and is not responsible for their content. The rights usually lie with the publishers or the external rights holders. [See Legal notice.](#)

**Download PDF:** 15.03.2025

**ETH-Bibliothek Zürich, E-Periodica, <https://www.e-periodica.ch>**



Since our Company won the international design competition for the East Coast Parkway Project in the Republic of Singapore, it took four years before the Benjamin Sheares Bridge that constitutes the major part of the Parkway was completed. To our great honour the most prestigious Tanaka Prize of the Society of Civil Engineers of Japan was awarded to this bridge in 1982. The Singapore Government named it Benjamin Sheares Bridge in memory of their late president Dr. Benjamin Sheares who passed away in harness just before the completion of the project.

The East Coast Parkway Project was let under package deal contract including investigation, design and construction. Its full length reaches as much as 12 kilometres. Bridge length spans 5 kilometres, and 1.8 kilometres of Benjamin Sheares Bridge with 4 ramps comprises the major part of the project. This bridge

consists of H-shaped piers called "trestle", trestle deck made of box girders and 47 metres length of beam that weighs 180 tons. Latest techniques are employed both for design and construction of the bridge. The ramps employ 9 span continuous prestressed box girder type and enjoys its functional beauty. Continuous and years of research and development of techniques about prestressed concrete structures like bridges, tanks etc. resulted in the successful completion of the Benjamin Sheares Bridge.

Our company will make best use of various experiences we gained through this project for our further progress and development in this field.

We are most appreciative of Chancewah Maunsell & Partners and Toh Seng Sit Construction (PTE) Ltd associated with Sato Kogyo, helping us very much during the E.C.P. Project.

ベンジャミン・シアース・ブリッジをデザインした硬貨を発行



シンガポールを象徴する構造物として佐藤工業が設計施工したベンジャミン・シアース・ブリッジをデザインした新5ドル硬貨(約500円)が、このほどシンガポール政府より発行されました。

#### Issue of a coin with a design of Benjamin Sheares Bridge on it

The government of Singapore has issued new five dollar coins (about 500 yen) that have the image of Benjamin Sheares Bridge on it. Sato Kogyo Co Ltd has designed and constructed the above bridge as a symbolic structure in Singapore. Two kinds of 5 dollar coins are issued. One is a commemorative coin made of pure silver, and another is nickel.

Established in 1862 / General Contractor  
**SATO KOGYO CO.,LTD.**

PRESIDENT Kinji Sato

●HEAD OFFICE:

8, Honcho 4-chome, Nihonbashi, Chuo-ku, Tokyo 103  
 Tel.: (03) 661-1231 Telex: SATOKO J 2522481

●BRANCHES:

Sapporo, Tohoku Kanto, Tokyo, Yokohama, Hokuriku, Nagoya, Osaka, Chugoku, Shikoku, Kyusyu and some 60 offices, plants and other facilities

●OFFICES ABROAD:

SINGAPORE

17-D, Balmoral Road, Singapore 1025  
 Tel.: 2350011 Telex: SATOKO 8733108

MALAYSIA

11-D, Jalan Parry, Kuala Lumpur, West Malaysia  
 Tel.: 422632 Telex: SATOKO 8431234

JEDDAH

No. 906, Kaki Center, Medina Road Jeddah Saudi Arabia P.O. Box 8865  
 Tel.: 6602860, Telex: SATOKO SJ 495-403129

●AFFILIATED COMPANIES ABROAD:

SATO AMOY CONSTRUCTION (MALAYSIA) SDN. BHD.

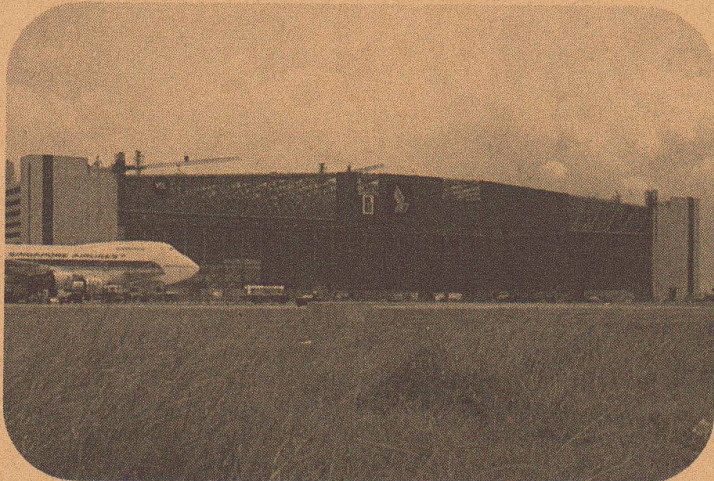
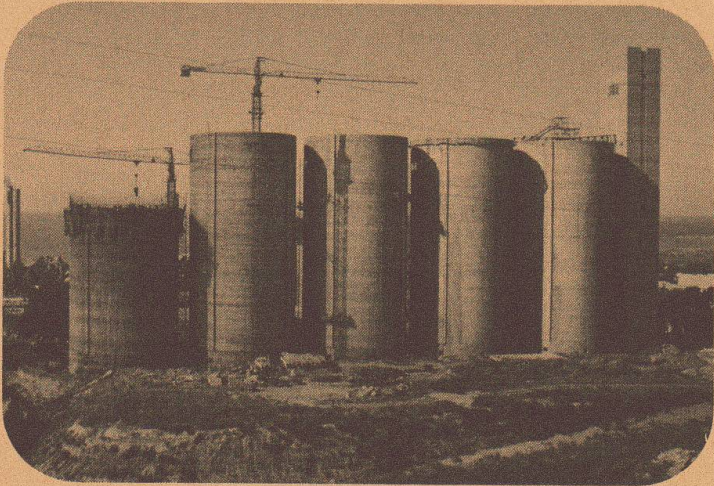
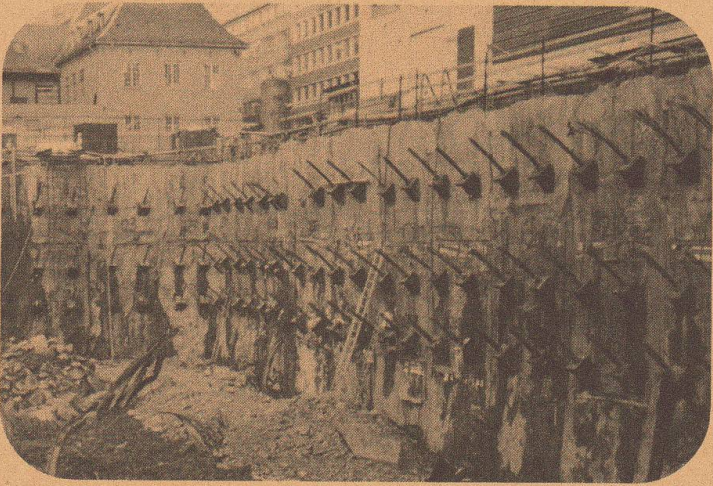
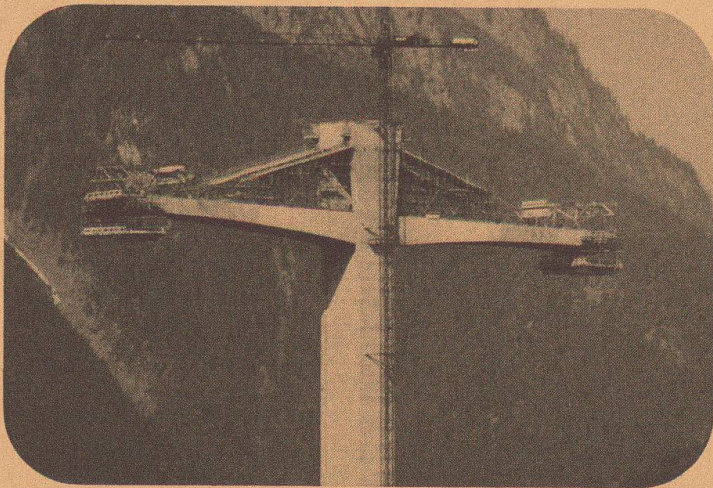
No. 15, Jalan SS 4D 2 (1st Floor) Peoples' Park, Petaling Jaya Selangor, Malaysia  
 KEDAH SATO SDN. BHD.  
 No. 97 S and G Mergong Industrial Estate Seberang Jalan Putera Alor Star, Kedah  
 Malaysia

SATO ARABIA CO., LTD.

No. 906, Kaki Center, Medina Road Jeddah Saudi Arabia P.O. Box 8865.

SATO IRAN CO., LTD.

No. 3 Joveyn Street, Alvand Avenue Argentine Circle, Tehran, Iran



**the symbol for:**

- **Post-tensioning**
- **Soil and Rock Anchors**
- **Slipforming**
- **Heavy Rigging**

Please send me detailed information on:

- Post-tensioning
- Soil and Rock Anchors
- Slipforming
- Heavy Rigging
- Other

send this coupon to the address below or to the next VSL Representative

**Losinger Ltd.**  
**VSL International**  
**Könizstrasse 74**  
**3001 Berne/Switzerland**  
**Phone 031 45 22 11**  
**Telex 33300/32667**

Representatives in:  
Australia, Austria, Belgium, Brazil, Canada, Denmark, Finland, France, FR Germany, Greece, Honduras, Hong Kong, Indonesia, Iran, Ireland, Italy, Japan, Korea, Kuwait, Malaysia, Netherlands, Norway, Panama, Peru, Philippines, Portugal, Saudi Arabia, Singapore, South Africa, Sweden, Switzerland, Taiwan, Turkey, United Kingdom, USA, Venezuela.

Original Swiss made  
**SCHMIDT**

Use the ORIGINAL

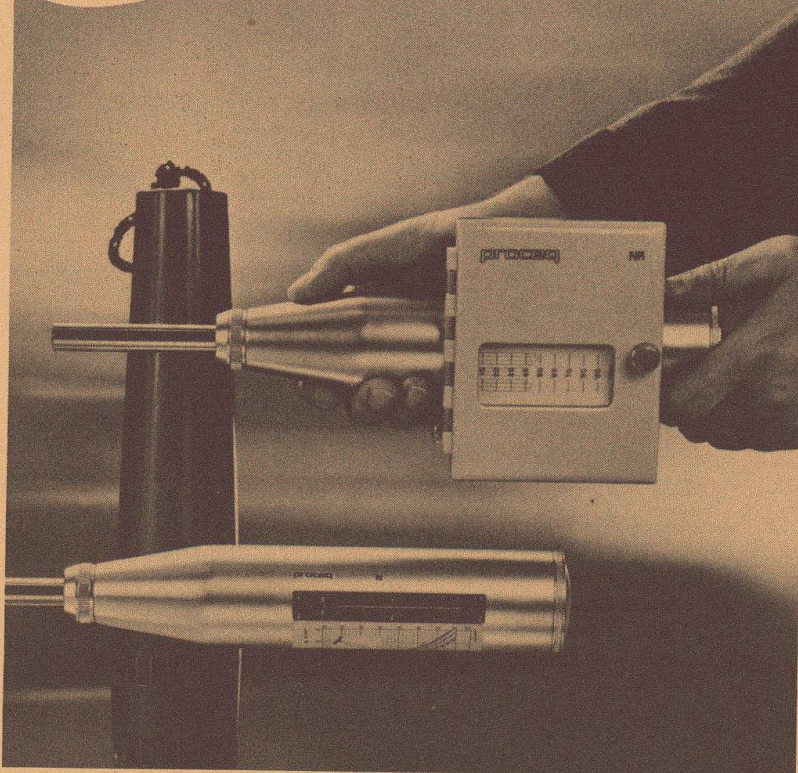
## Concrete Test Hammer SCHMIDT

Models N and NR for non-destructive testing of the concrete quality in the finished structure

Original Swiss made  
**SCHMIDT**

stands for:

- constant high product quality – Swiss Finish
- spare parts guarantee, even for older instruments
- possibility of accurate calibration
- calibration on assured and unchanged basis for 25 years



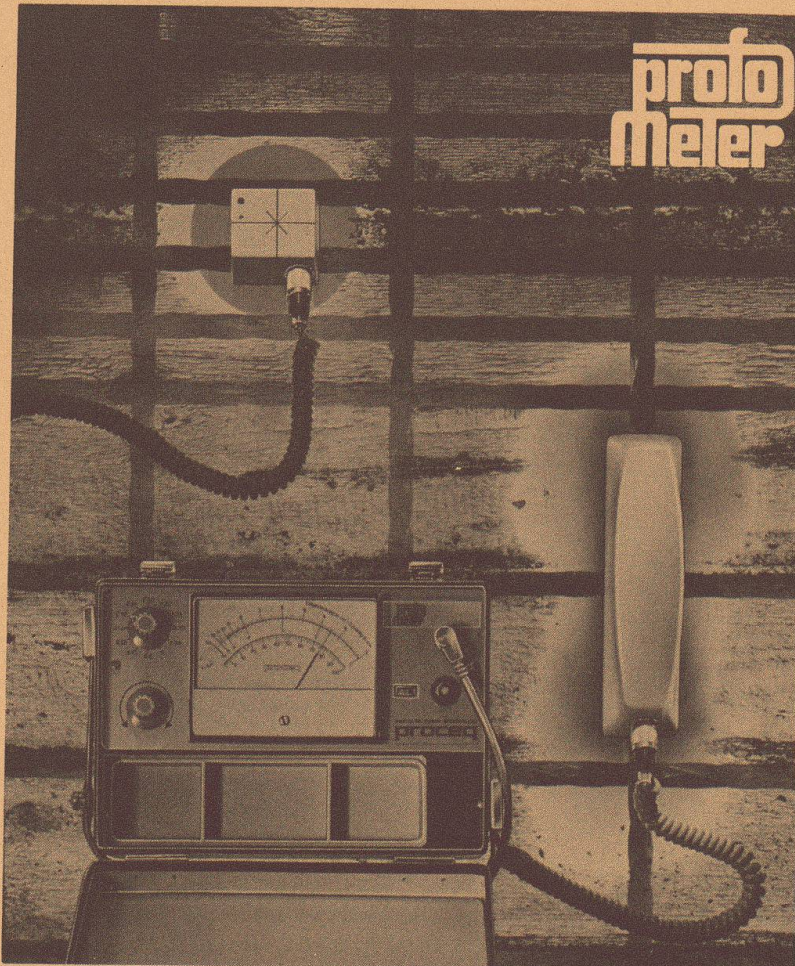
a PROCEQ product from Switzerland

proto  
meter

## Reinforcement Detector PROFOMETER

PROFOMETER for precise and non-destructive testing of reinforcement in completed concrete structures.

- Determination of position, direction and quantity of main and secondary reinforcement
- Exact measurement of concrete cover up to 120 mm, even with densely packed reinforcement
- Determining the locations suitable for drilling dowel holes
- Estimates of rod diameter



a PROCEQ product from Switzerland

PROCEQ SA  
Riesbachstr. 57 Tel. 01/477800  
CH-8034 Zürich Telex 53357 proce ch

**proceq**