

Objektyp: **Advertising**

Zeitschrift: **IABSE structures = Constructions AIPC = IVBH Bauwerke**

Band (Jahr): **9 (1985)**

Heft C-34: **Telecommunication towers**

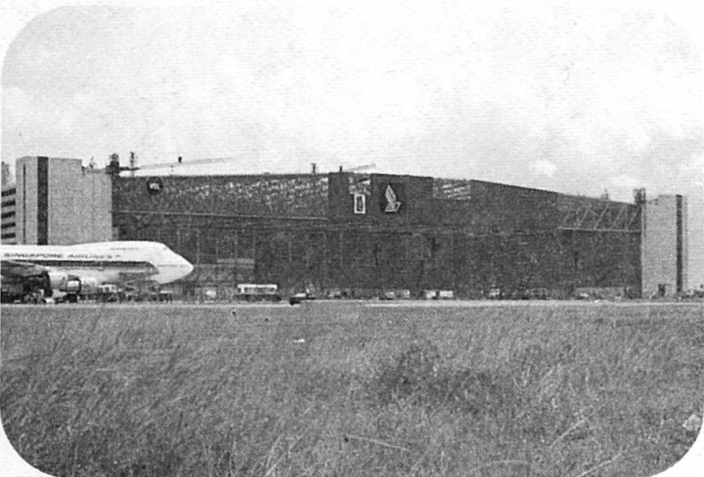
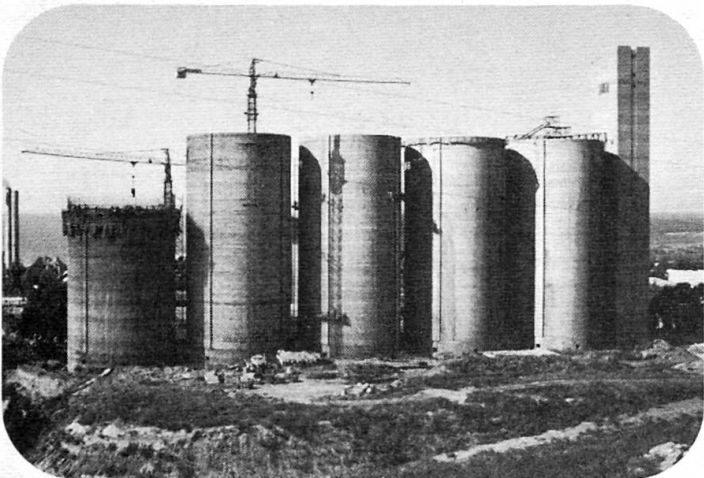
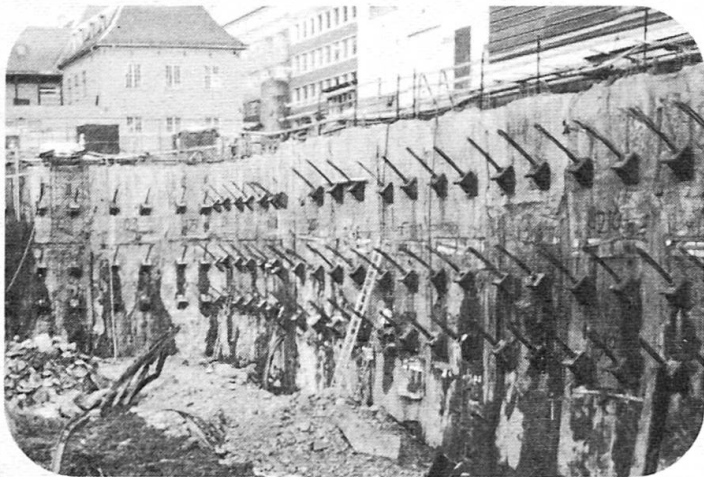
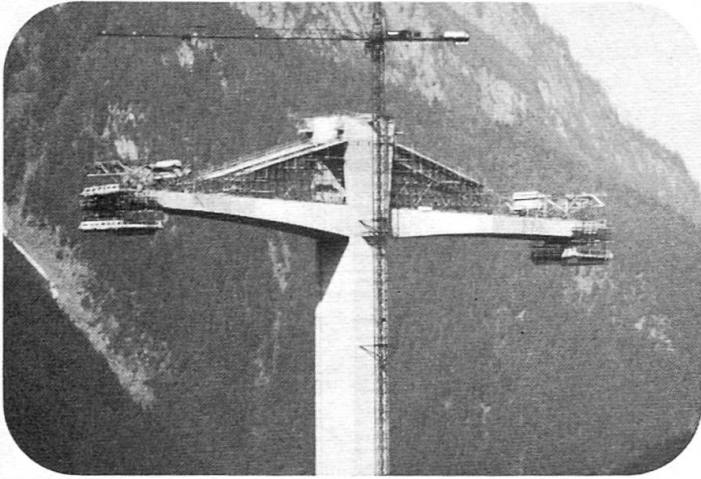
PDF erstellt am: **22.07.2024**

Nutzungsbedingungen

Die ETH-Bibliothek ist Anbieterin der digitalisierten Zeitschriften. Sie besitzt keine Urheberrechte an den Inhalten der Zeitschriften. Die Rechte liegen in der Regel bei den Herausgebern. Die auf der Plattform e-periodica veröffentlichten Dokumente stehen für nicht-kommerzielle Zwecke in Lehre und Forschung sowie für die private Nutzung frei zur Verfügung. Einzelne Dateien oder Ausdrucke aus diesem Angebot können zusammen mit diesen Nutzungsbedingungen und den korrekten Herkunftsbezeichnungen weitergegeben werden. Das Veröffentlichen von Bildern in Print- und Online-Publikationen ist nur mit vorheriger Genehmigung der Rechteinhaber erlaubt. Die systematische Speicherung von Teilen des elektronischen Angebots auf anderen Servern bedarf ebenfalls des schriftlichen Einverständnisses der Rechteinhaber.

Haftungsausschluss

Alle Angaben erfolgen ohne Gewähr für Vollständigkeit oder Richtigkeit. Es wird keine Haftung übernommen für Schäden durch die Verwendung von Informationen aus diesem Online-Angebot oder durch das Fehlen von Informationen. Dies gilt auch für Inhalte Dritter, die über dieses Angebot zugänglich sind.



the symbol for:

- **Post-tensioning**
- **Soil and Rock Anchors**
- **Slipforming**
- **Heavy Rigging**

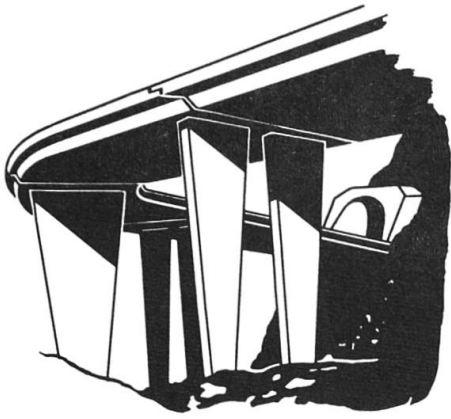
Please send me detailed information on:

- Post-tensioning _____
- Soil and Rock Anchors _____
- Slipforming _____
- Heavy Rigging _____
- Other _____

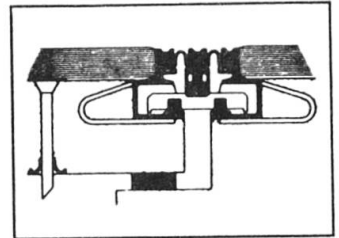
send this coupon to the address below or to the next VSL Representative

VSL INTERNATIONAL LTD
Könizstrasse 74
3001 Berne/Switzerland
Phone 031 46 28 33
Telex 911755

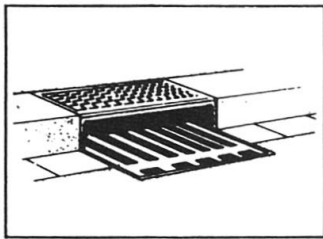
Representatives in:
Australia, Austria, Belgium, Brazil, Canada, Denmark, Finland, France, FR Germany, Greece, Honduras, Hong Kong, Indonesia, Iran, Ireland, Italy, Japan, Korea, Kuwait, Malaysia, Netherlands, Norway, Panama, Peru, Philippines, Portugal, Saudi Arabia, Singapore, South Africa, Sweden, Switzerland, Taiwan, Turkey, United Kingdom, USA, Venezuela.



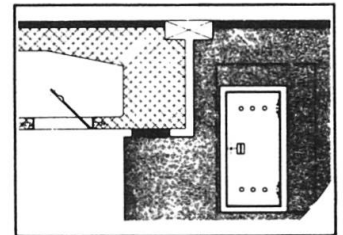
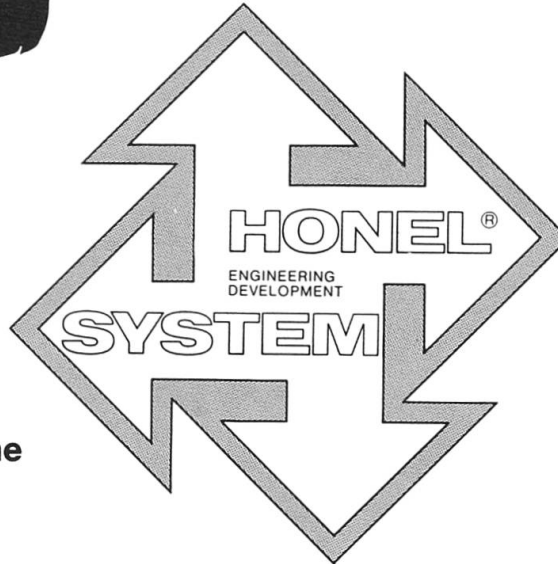
**Belags-Sickerwasser-
Ableiter**
Subsurface Seepage.
**Evacuations des eaux
et aérations.**
*Ductos de agua de
filtración para calzadas.*



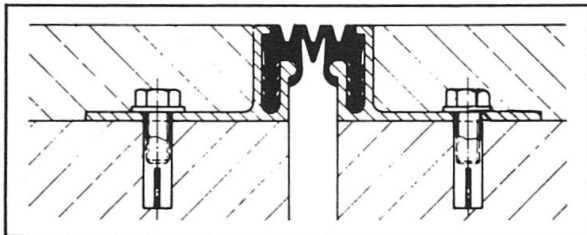
**Fahrbahn-Übergangs-
Konstruktionen.**
Expansion joints.
**Raccordements de
chausées**
*Sistemas de juntas
de dilatación.*



Entwässerungs-Systeme
Surface drainage
Evacuations des eaux
Pozos de drenaje

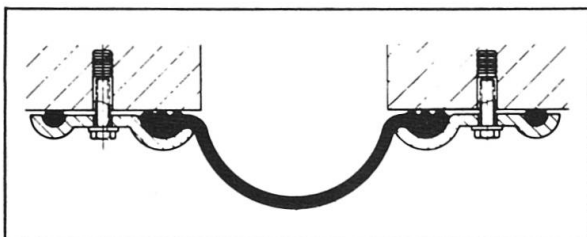
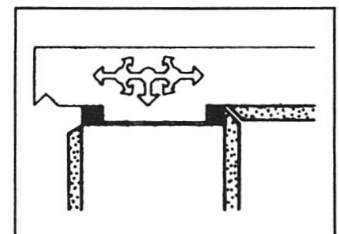


**Hohlraumschalungen
Einstiegluken + Türen**
Formwork + Moulds
Access openings
Ouvertures d'entrée
Aberturas de entrada



Fugendichtungen im Hoch- + Tiefbau
Joint seals + Joint profilés
Sellos para juntas

Auflager
Structural
Bearings
Appuis
Apoyos



Pressen + Pumpen
Hydraulic jacks
Verins + Pompes
Prensas + bombas



heinz honegger ag

CH-8427 Rorbas ZH Switzerland
Tel. 01 - 865 11 77, Telex 52844

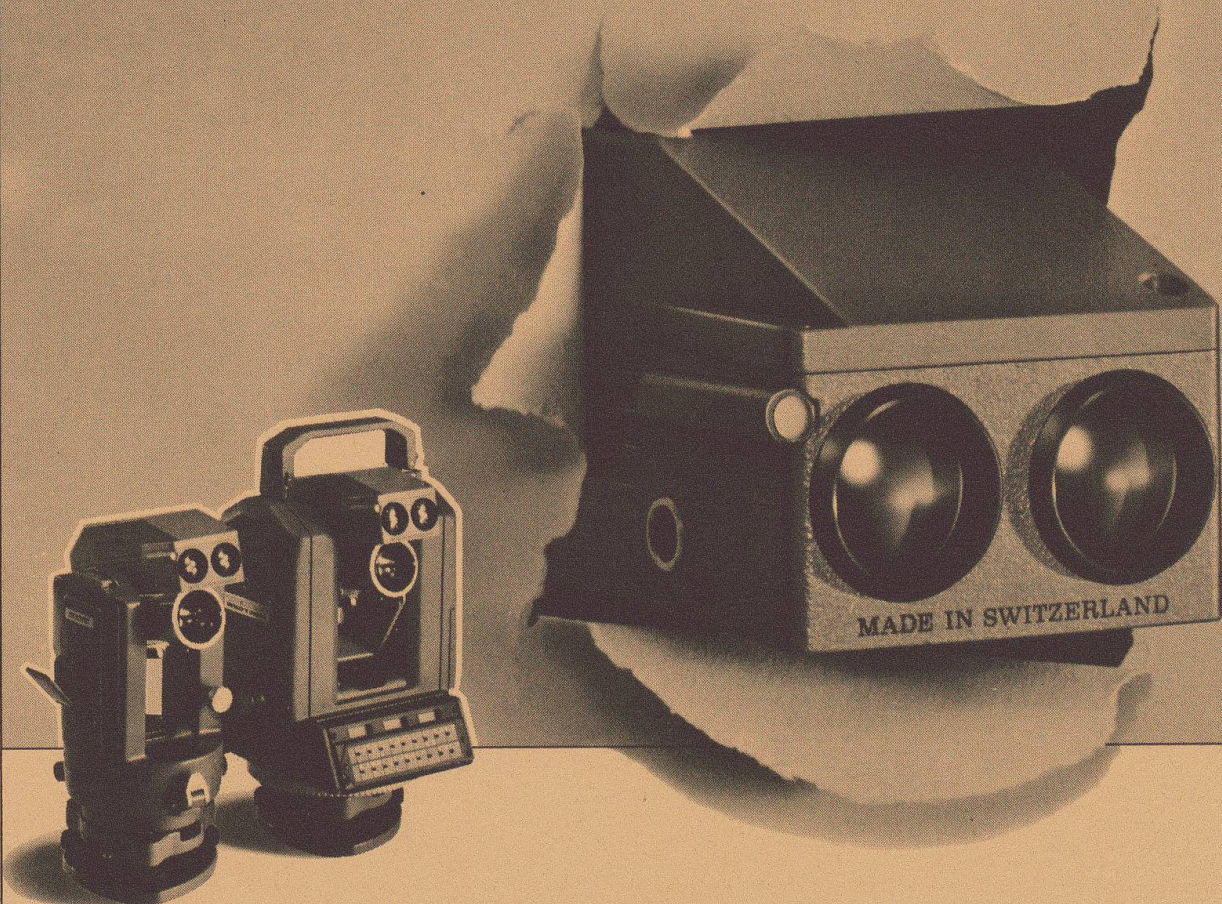
Vertretungs- und Lizenzvergabe:

Honel-Holding SA
Sonnmattstrasse 6
CH-8180 Bülach, Switzerland
Phone 01/860 89 43



Wild DI1000 DISTOMAT™

The EDM you can afford for every crew



a b r e a k t h r o u g h

in size

In day-to-day work, 99% of distance measurements are less than 500 m. The need is for a small, lightweight, easy-to-use EDM that measures quickly and accurately.

weight

This is the DI1000, the instrument that makes a tape redundant:

- 500 m to a single prism
- 800 m to three prisms (1000 m in favourable conditions)
- 5 mm +5 ppm accuracy
- Slope, horizontal distance, height difference
- Setting-out mode
- Fits on all Wild theodolites, optical and electronic

performance

The ideal instrument for:

- Building and construction
- Civil engineering and setting out
- Drainage and irrigation
- Cadastral, detail and topographic surveys
- Mining and tunnelling

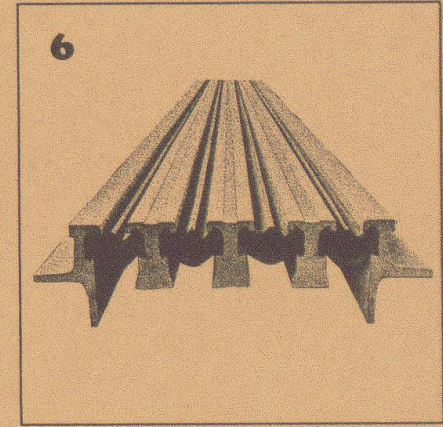
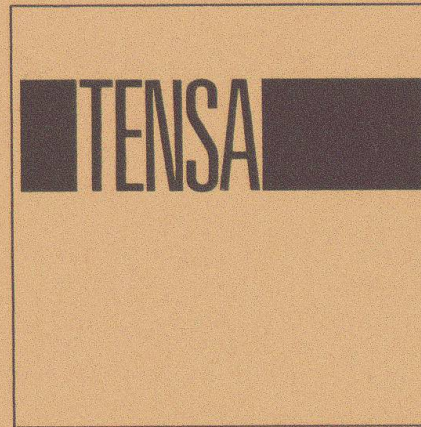
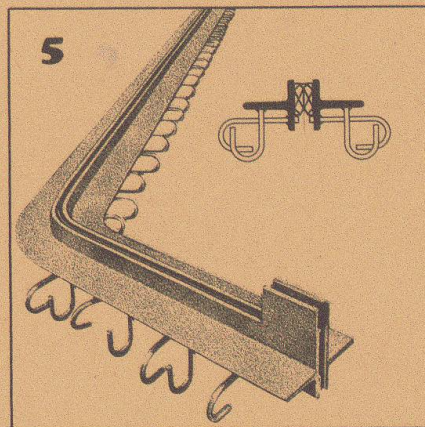
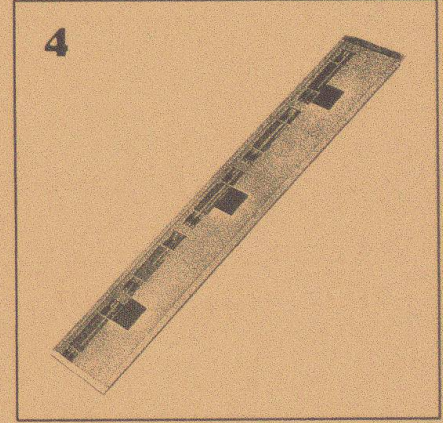
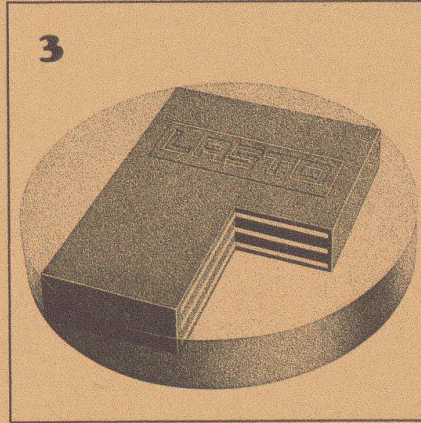
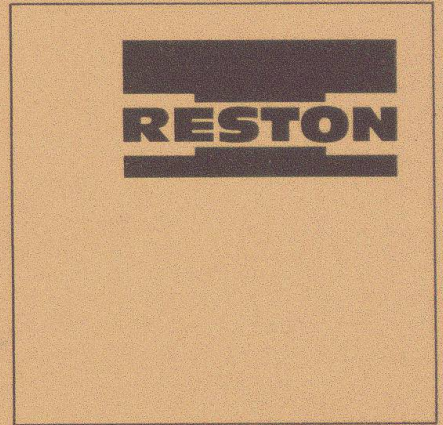
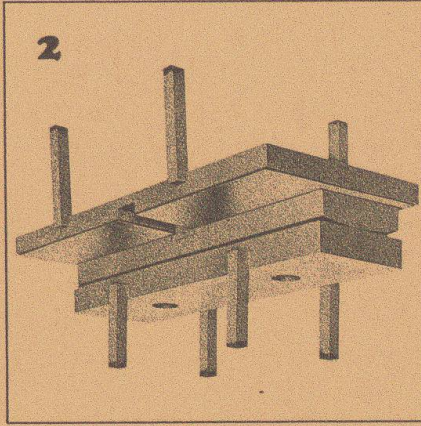
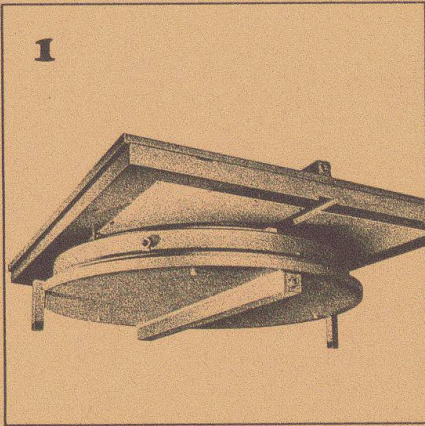
Ask for a brochure, demonstration and offer. ■

price

G 76-85

Wild Heerbrugg Ltd · CH-9435 Heerbrugg · Switzerland · Telex 881 222

**WILD
HEERBRUGG**



1
RESTON Pot Sliding Bearings
 are highly suitable for installation in bridge structures. They feature a low-profile design, low weight and high loading capacity.

2
RESTON Linear Tilting and Sliding Bearings
 are a combination of normal linear tilting bearings and PTFE sliding bearings and are suitable for installation in bridge structures.

3
LASTO-BLOCK Bearings
 are suitable for building, civil engineering and bridge construction applications. Their simple form allows easy installation.

4
LASTO-STRIP Bearings for Buildings
 were especially developed for building constructions. They are particularly suitable for movement compensation between concrete slabs and load-supporting walls and prevent structural cracking.

5
TENSA-ACME Roadway Construction Joints
 are highly suitable for installation in traffic levels (parking lots, bridges, airport areas etc.). Dilatation up to 60 mm.

6
TENSA-LASTIC Roadway Construction Joints
 meet all the requirements that can be made in bridge engineering of a modern joint design. They are rugged and watertight. Dilatation range 60 mm and bigger.

PROCEQ SA
 Riesbachstrasse 57
 CH-8034 Zurich

proceq

Phone: 01/47 7800
 Telex 53357 proce ch