

Zeitschrift: IABSE structures = Constructions AIPC = IVBH Bauwerke
Band: 10 (1986)
Heft: C-37: Protective structures: Part I

Werbung

Nutzungsbedingungen

Die ETH-Bibliothek ist die Anbieterin der digitalisierten Zeitschriften. Sie besitzt keine Urheberrechte an den Zeitschriften und ist nicht verantwortlich für deren Inhalte. Die Rechte liegen in der Regel bei den Herausgebern beziehungsweise den externen Rechteinhabern. [Siehe Rechtliche Hinweise.](#)

Conditions d'utilisation

L'ETH Library est le fournisseur des revues numérisées. Elle ne détient aucun droit d'auteur sur les revues et n'est pas responsable de leur contenu. En règle générale, les droits sont détenus par les éditeurs ou les détenteurs de droits externes. [Voir Informations légales.](#)

Terms of use

The ETH Library is the provider of the digitised journals. It does not own any copyrights to the journals and is not responsible for their content. The rights usually lie with the publishers or the external rights holders. [See Legal notice.](#)

Download PDF: 18.03.2025

ETH-Bibliothek Zürich, E-Periodica, <https://www.e-periodica.ch>

Wherever your surveying takes place: with Kern, you always know where you stand.

How you get to this island is your problem. But once you're there, we can give you an accurate position on the spot: $Y = 348615.188$, $X = 329010.543$, $Z = 15.368$; it takes only seconds.



The name of the surveying system which gives you coordinates and lets you set out points of all types directly in the field is **SICORD**. It handles the entire data flow from the physical location to the office data base. Various programs process the measurements and eliminate virtually all "cleaning up" of field data when you're back at headquarters. You can leave all surveying and setting out calculations in the field to **SICORD**. It takes account of temperature, earth's curvature, refraction and reduction factors as well.

Before you run off to survey your dream island, why don't you fill out the information coupon? It's worth the trouble.



Kern & Co. Ltd.
Mechanical, Optical and Electronic
Precision Instruments
CH-5001 Aarau, Switzerland
Telephone 064 25 11 11



**New: SICORD-Programs
now with ALPHACORD.**

Please send me:

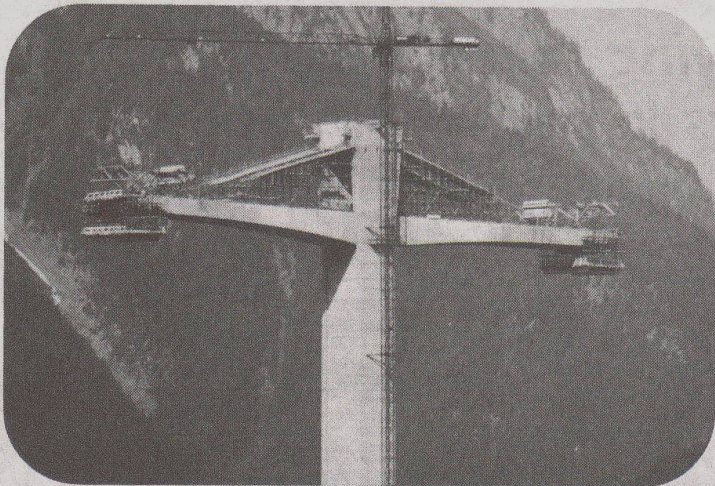
- Information on the complete Kern program.
- Information on the Kern SICORD.

Name: _____

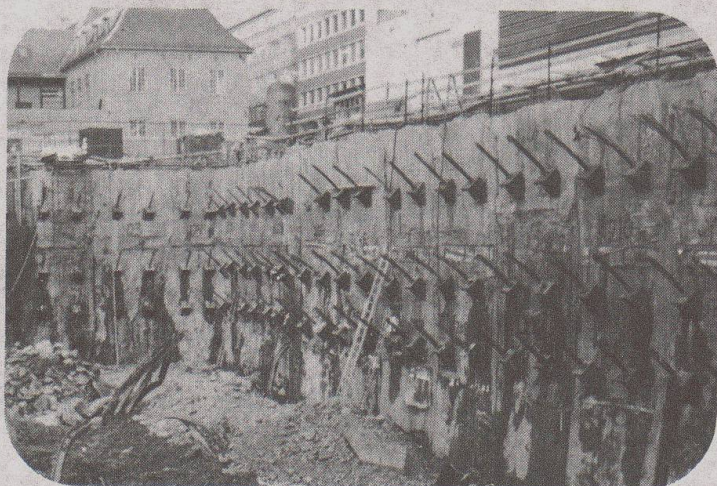
Company: _____

Address: _____

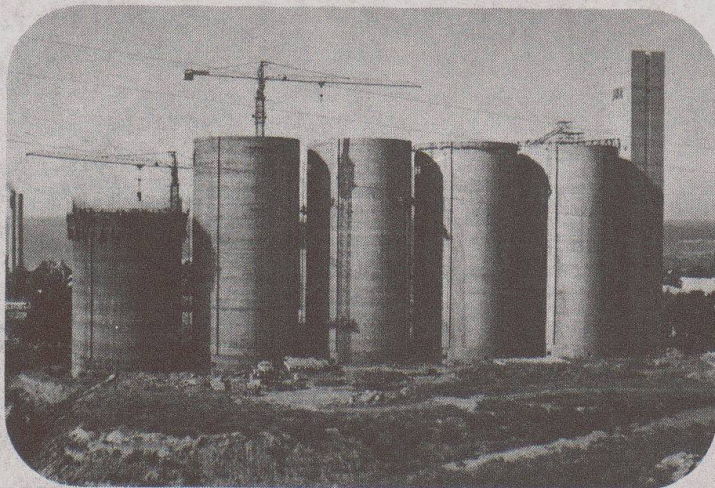
City: _____



the symbol for:



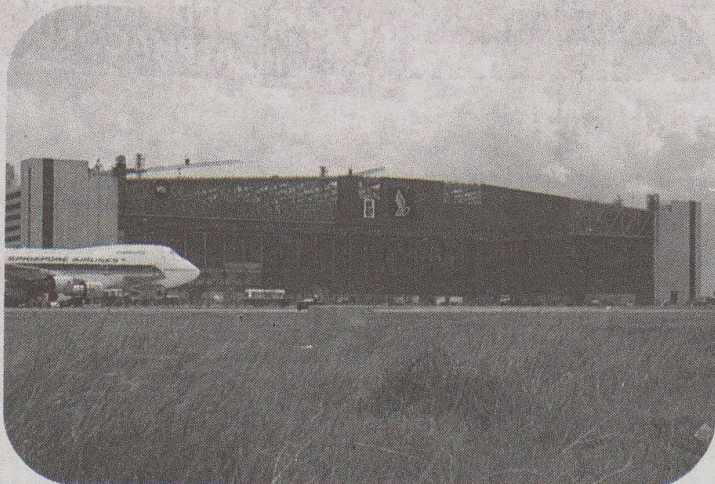
- **Post-tensioning**
- **Soil and Rock Anchors**
- **Slipforming**
- **Heavy Rigging**



Please send me detailed information on:

- Post-tensioning
- Soil and Rock Anchors
- Slipforming
- Heavy Rigging
- Other

send this coupon to the address below or to the next VSL Representative



VSL INTERNATIONAL LTD
Könizstrasse 74
3001 Berne/Switzerland
Phone 031 46 28 33
Telex 911755

Representatives in:
Australia, Austria, Belgium, Brazil, Canada, Denmark, Finland, France, FR Germany, Greece, Honduras, Hong Kong, Indonesia, Iran, Ireland, Italy, Japan, Korea, Kuwait, Malaysia, Netherlands, Norway, Panama, Peru, Philippines, Portugal, Saudi Arabia, Singapore, South Africa, Sweden, Switzerland, Taiwan, Turkey, United Kingdom, USA, Venezuela.