

Zeitschrift: IABSE structures = Constructions AIPC = IVBH Bauwerke
Band: 10 (1986)
Heft: C-38: Protective structures: Part II

Werbung

Nutzungsbedingungen

Die ETH-Bibliothek ist die Anbieterin der digitalisierten Zeitschriften. Sie besitzt keine Urheberrechte an den Zeitschriften und ist nicht verantwortlich für deren Inhalte. Die Rechte liegen in der Regel bei den Herausgebern beziehungsweise den externen Rechteinhabern. [Siehe Rechtliche Hinweise.](#)

Conditions d'utilisation

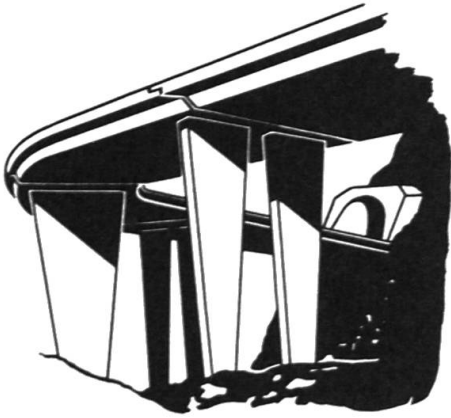
L'ETH Library est le fournisseur des revues numérisées. Elle ne détient aucun droit d'auteur sur les revues et n'est pas responsable de leur contenu. En règle générale, les droits sont détenus par les éditeurs ou les détenteurs de droits externes. [Voir Informations légales.](#)

Terms of use

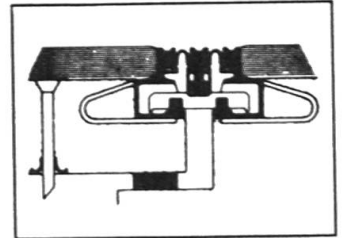
The ETH Library is the provider of the digitised journals. It does not own any copyrights to the journals and is not responsible for their content. The rights usually lie with the publishers or the external rights holders. [See Legal notice.](#)

Download PDF: 18.03.2025

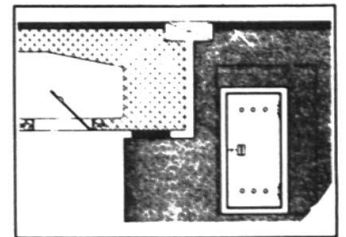
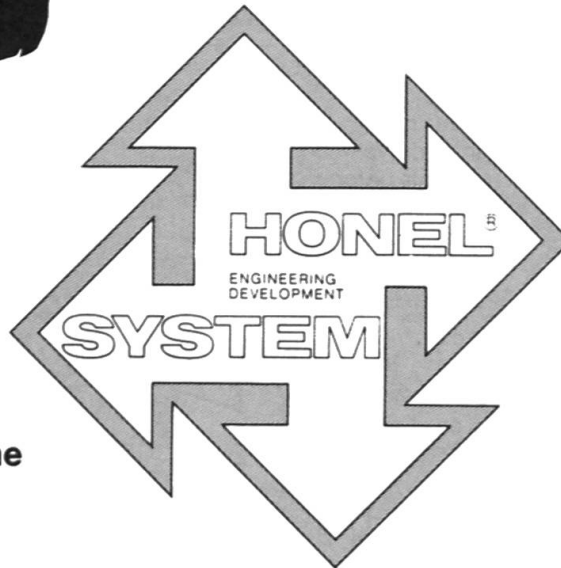
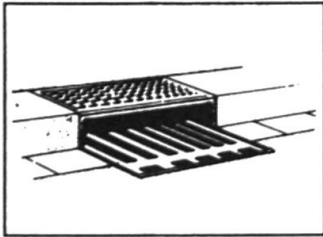
ETH-Bibliothek Zürich, E-Periodica, <https://www.e-periodica.ch>



**Belags-Sickerwasser-
Ableiter**
Subsurface Seepage.
**Evacuations des eaux
et aérations.**
*Ductos de agua de
filtración para calzadas.*

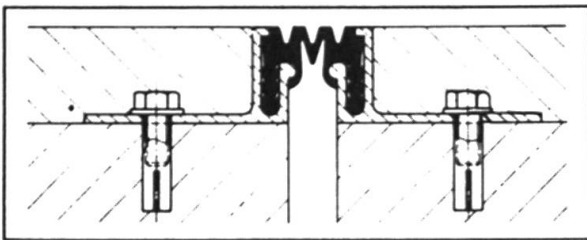


**Fahrbahn-Übergangs-
Konstruktionen.**
Expansion joints.
**Raccordements de
chausées**
*Sistemas de juntas
de dilatación.*



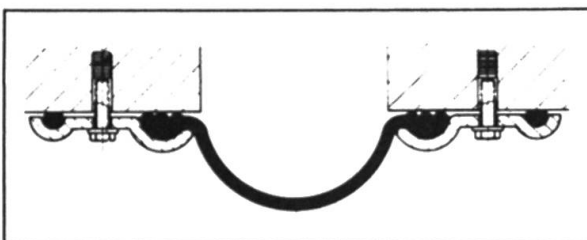
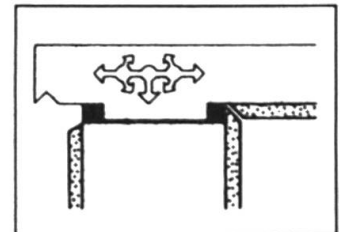
Entwässerungs-Systeme
Surface drainage
Evacuations des eaux
Pozos de drenaje

Hohlraumschalungen
Einstiegsluken + Türen
Formwork + Moulds
Access openings
Ouvertures d'entrée
Aberturas de entrada



Fugendichtungen im Hoch- + Tiefbau
Joint seals + Joint profilés
Sellos para juntas

Auflager
Structural
Bearings
Appuis
Apoyos



Pressen + Pumpen
Hydraulic jacks
Verins + Pompes
Prensas + bombas



heinz honegger ag

CH-8427 Rorbas ZH Switzerland
Tel. 01 - 865 11 77, Telex 52844

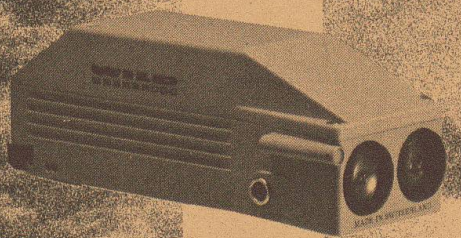
Vertretungs- und Lizenzvergabe:

Honel-Holding SA
Sonnmatstrasse 6
CH-8180 Bülach, Switzerland
Phone 01/860 89 43

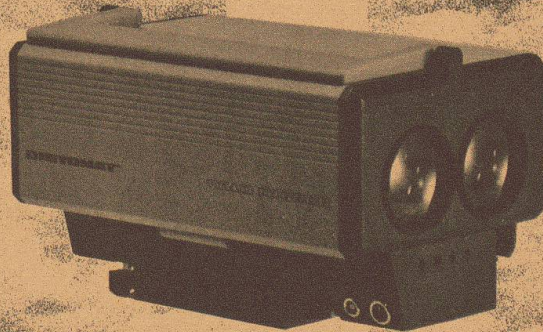


HANDY FEATHERWEIGHTS

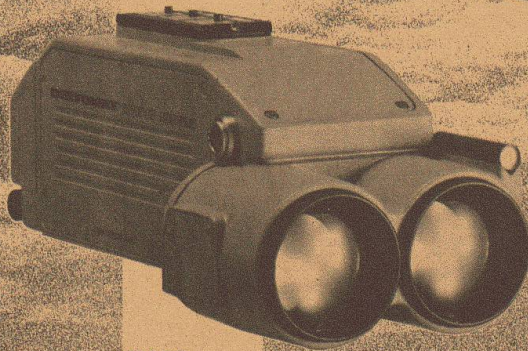
WITH BREAKTHROUGH PERFORMANCE



DI1000



DI3000



DI55

Wild DISTOMAT™ EDMs are not only extremely light and handy, but every one of them is at the top of its class.

For routine surveying, the **Wild DI1000** is the EDM with outstanding performance. Its compact size, performance, and typical Wild accuracy are the key to its success. This minor master weighs only 600 grams (1.3 lb) and takes just 5 seconds to measure up to 1000m.

For medium range, there is the **Wild DI55**, the highly accurate DISTOMAT (3mm + 2ppm). A typical measurement takes 4 seconds. In tracking mode, the distance is measured and displayed every second. The DI55 has a range of 5km and weighs only 1.1kg (2.4lb).

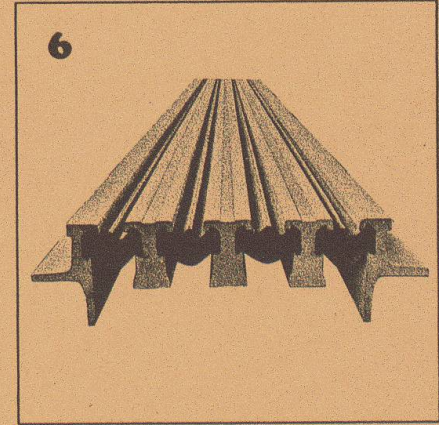
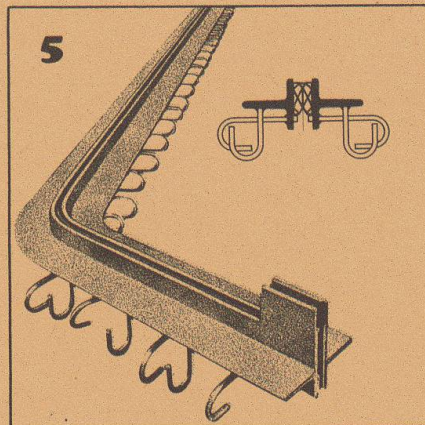
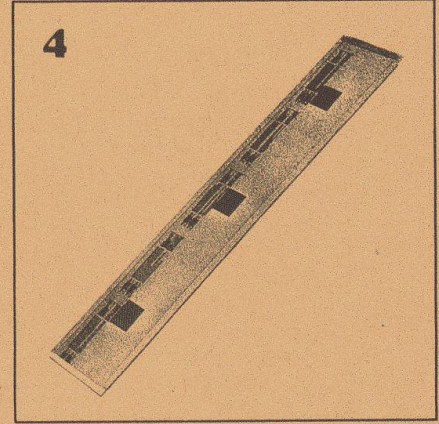
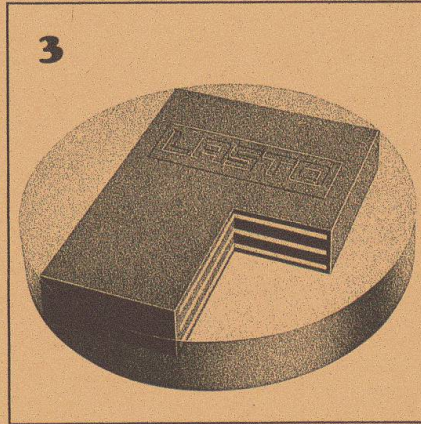
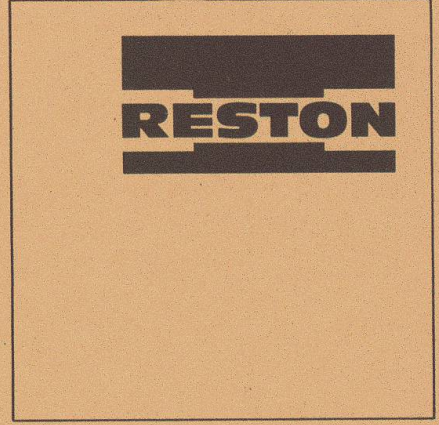
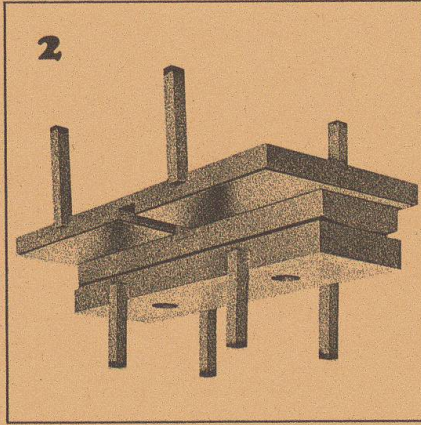
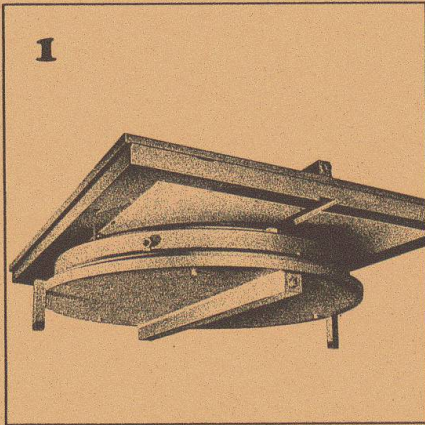
For long-range applications, use the trendsetting **Wild DI3000**, the DISTOMAT with unprecedented performance, which measures distances up to 14km in only 0.8 seconds. With a standard deviation of 3mm to 5mm + 1ppm, this DISTOMAT is suitable for all

types of surveying tasks and special non-geodetic applications. The DI3000 weighs only 1.7kg (3.75lb).

All three Wild DISTOMATs, the DI1000, DI55, and DI3000 fit any optical or electronic Wild theodolite. That makes your equipment adaptable to any task at little cost.

Ask for detailed literature. ■

G 94-86



1
RESTON Pot Sliding Bearings are highly suitable for installation in bridge structures. They feature a low-profile design, low weight and high loading capacity.

2
RESTON Linear Tilting and Sliding Bearings are a combination of normal linear tilting bearings and PTFE sliding bearings and are suitable for installation in bridge structures.

3
LASTO-BLOCK Bearings are suitable for building, civil engineering and bridge construction applications. Their simple form allows easy installation.

4
LASTO-STRIP Bearings for Buildings were especially developed for building constructions. They are particularly suitable for movement compensation between concrete slabs and load-supporting walls and prevent structural cracking.

5
TENSA-ACME Roadway Construction Joints are highly suitable for installation in traffic levels (parking lots, bridges, airport areas etc.). Dilatation up to 60 mm.

6
TENSA-LASTIC Roadway Construction Joints meet all the requirements that can be made in bridge engineering of a modern joint design. They are rugged and watertight. Dilatation range 60 mm and bigger.

PROCEQ SA
 Riesbachstrasse 57
 CH-8034 Zurich

proceq

Phone: 01/47 7800
 TeleX 53357 proce ch