

Zeitschrift: IABSE structures = Constructions AIPC = IVBH Bauwerke
Band: 11 (1987)
Heft: C-41: Tensosttructures

Artikel: A semi-rigid hanging roof in Wakayama (Japan)
Autor: Kawaguchi, M.
DOI: <https://doi.org/10.5169/seals-20379>

Nutzungsbedingungen

Die ETH-Bibliothek ist die Anbieterin der digitalisierten Zeitschriften auf E-Periodica. Sie besitzt keine Urheberrechte an den Zeitschriften und ist nicht verantwortlich für deren Inhalte. Die Rechte liegen in der Regel bei den Herausgebern beziehungsweise den externen Rechteinhabern. Das Veröffentlichen von Bildern in Print- und Online-Publikationen sowie auf Social Media-Kanälen oder Webseiten ist nur mit vorheriger Genehmigung der Rechteinhaber erlaubt. [Mehr erfahren](#)

Conditions d'utilisation

L'ETH Library est le fournisseur des revues numérisées. Elle ne détient aucun droit d'auteur sur les revues et n'est pas responsable de leur contenu. En règle générale, les droits sont détenus par les éditeurs ou les détenteurs de droits externes. La reproduction d'images dans des publications imprimées ou en ligne ainsi que sur des canaux de médias sociaux ou des sites web n'est autorisée qu'avec l'accord préalable des détenteurs des droits. [En savoir plus](#)

Terms of use

The ETH Library is the provider of the digitised journals. It does not own any copyrights to the journals and is not responsible for their content. The rights usually lie with the publishers or the external rights holders. Publishing images in print and online publications, as well as on social media channels or websites, is only permitted with the prior consent of the rights holders. [Find out more](#)

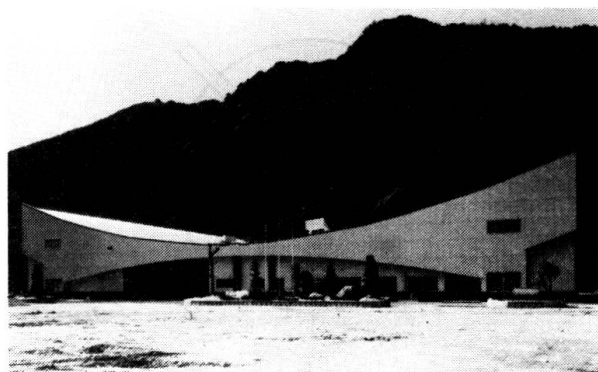
Download PDF: 14.07.2025

ETH-Bibliothek Zürich, E-Periodica, <https://www.e-periodica.ch>



10. A Semi-Rigid Hanging Roof in Wakayama (Japan)

Owner: Town of Susami, Wakayama, Japan
Architect: Kuboi Design Office
Structural Engineer: Mamoru Kawaguchi
Contractor: Abe Komuten
Fabricator: Sumitomo Metal Industries
Total Floor Area: 3957 m²
Height: 13.3 m
Total Weight of Steel: 179 metric tons
Construction Period: 11 months
Service Date: March 1985

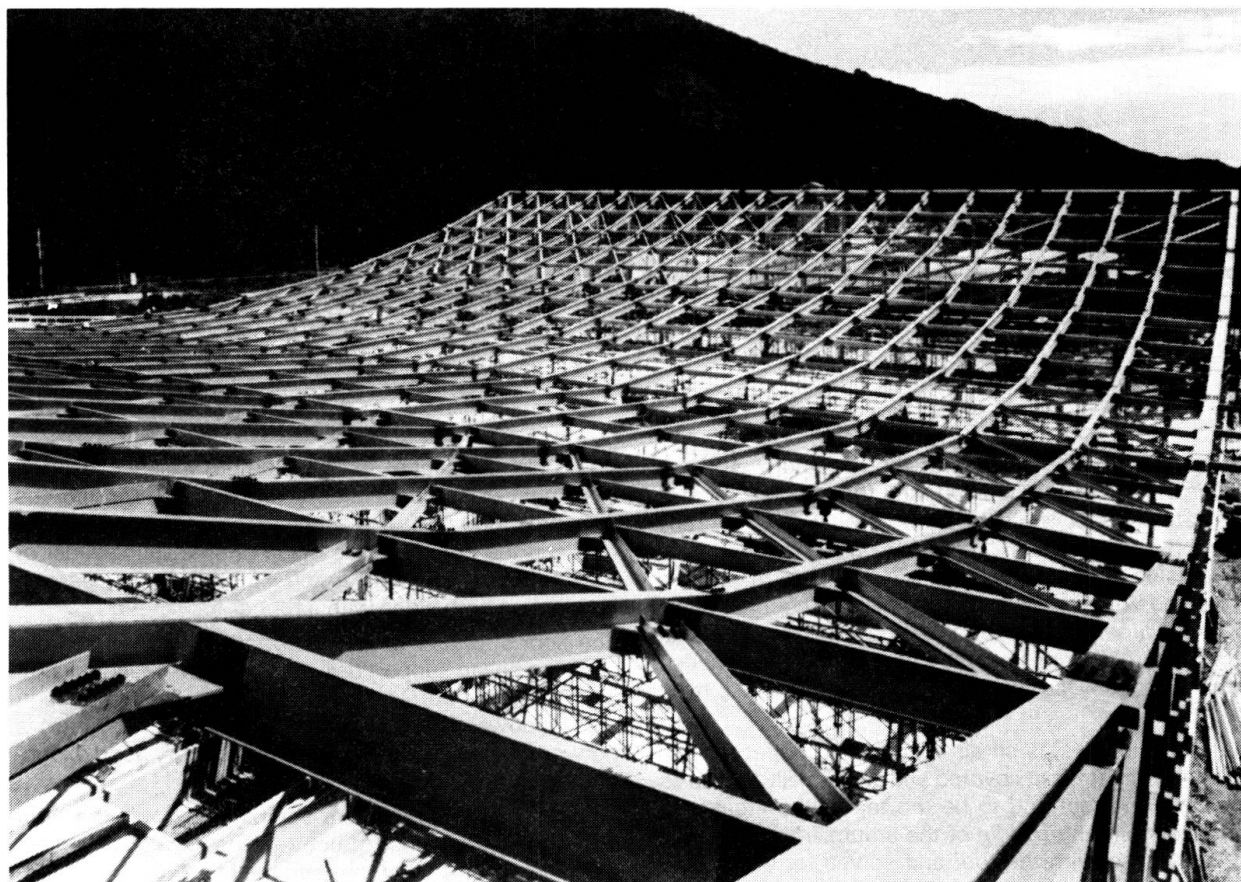


General View

Introduction

A hanging roof is said to be rational and economical, since structural members of the roof are stressed only in tension, and they can develop the full strength of the material without any reduction due to buckling. However, this is true only within the boundary of the roof, and how to deal with the big tensile forces which have been carried by the roof members up to the boundary has been one of the greatest design problems of an hanging roof. The most popular way of taking care of the tensile forces at the end of a one-way hanging roof of

rectangular plan is the backstay system in which the tensile forces of the roof cables are taken over by bachstay cables at the roof end from where the inclined bachstay cables carry the forces down to anchorages. The backstay system has a sufficient technological background in the field of suspension bridges, and it has also been applied to many examples of hanging roofs. It should be noted, however, that this system has the following drawbacks when it is used for a hanging roof:



Roof Frame Being Erected

- 1) Extra costs and space are necessary on both sides of the building for the backstay cables and the anchorages.
- 2) The backstay cables should be treated for corrosion resistance.

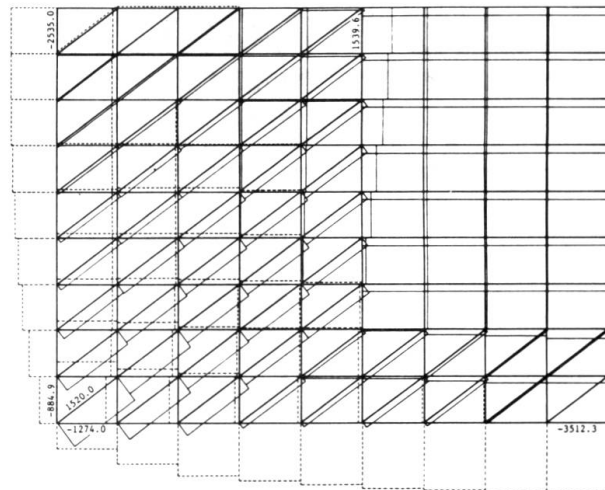
The structure presented here is the second example to have been achieved of a semi-rigid hanging roof which can do without backstays. The first one was realized in Kagoshima City in 1983 on a smaller scale.

Structural Features

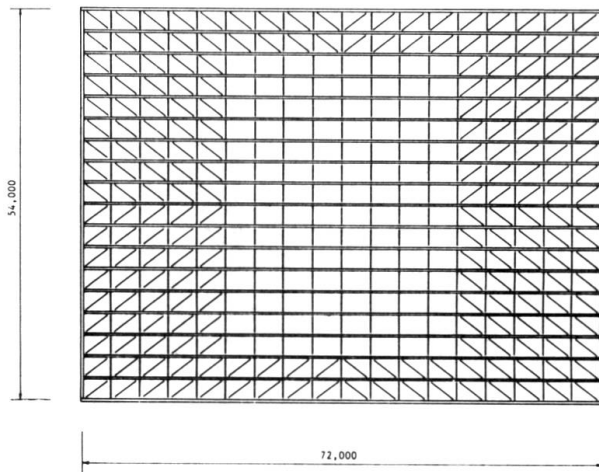
The structure is a hanging roof covering a rectangular plan of 54 m x 72 m. The structural system of the roof may be best illustrated by the roof plan and the elevation. The roof is constituted in the following manner:

- 1) The roof frame is composed of the hanging, the transverse and the diagonal members, the last being provided in the outer area of the roof. The hanging members are given a continuous bending rigidity in the vertical plane.
- 2) The peripheral members with increased sectional areas constitute a boundary. They are supported by posts at an appropriate distance.

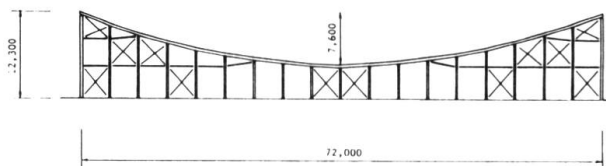
When roof is subjected to a distributed vertical load, tensile forces are produced in the hanging members in the central area. These tensile forces are then automatically led to the corners of the roof by means of the diagonal members. This load-transferring process is possible in this roof system without producing any excessive deformation, since the hanging members are provided with a continuous bending rigidity, which is not the case with «pure» hanging roofs. The tensile forces transmitted toward the corners produce big compressive forces in the peripheral members. In other words the peripheral members constitute a kind of «compression ring» in a rectangular form. Small amounts of compressive forces are produced even in the roof area, but they are easily resisted by members of reasonable size. All these forces are shown in the figure. The big compression in the peripheral members does not cause any economical problems, because these members are restrained at an appropriate distance in the vertical as well as horizontal direction. The compressive forces in the curved peripheral members produce downward forces, which are supported by the posts. The total weight of the roof is mainly supported by this effect. One of the structural features of the system is that it constitutes a «closed» force system in the horizontal equilibrium, and can be supported simply on top of the posts arranged along the periphery of the building. The character of the system is highly hybrid, since while it keeps the merits of a «pure» hanging roof, its low bending rigidity is indispensable for a convenient force flow in the plane of the roof any excessive deflections being produced.



Axial Forces in Roof (in kN)



Floor Plan



Wall Elevation

Reference

Study and Realization of a Hybrid Hanging Roof, by M. Kawaguchi, et al., IASS Symposium Dortmund, 1984.

(M. Kawaguchi)