

Zeitschrift: Bauen + Wohnen = Construction + habitation = Building + home : internationale Zeitschrift
Herausgeber: Bauen + Wohnen
Band: 7 (1953)
Heft: 6

Werbung

Nutzungsbedingungen

Die ETH-Bibliothek ist die Anbieterin der digitalisierten Zeitschriften. Sie besitzt keine Urheberrechte an den Zeitschriften und ist nicht verantwortlich für deren Inhalte. Die Rechte liegen in der Regel bei den Herausgebern beziehungsweise den externen Rechteinhabern. [Siehe Rechtliche Hinweise.](#)

Conditions d'utilisation

L'ETH Library est le fournisseur des revues numérisées. Elle ne détient aucun droit d'auteur sur les revues et n'est pas responsable de leur contenu. En règle générale, les droits sont détenus par les éditeurs ou les détenteurs de droits externes. [Voir Informations légales.](#)

Terms of use

The ETH Library is the provider of the digitised journals. It does not own any copyrights to the journals and is not responsible for their content. The rights usually lie with the publishers or the external rights holders. [See Legal notice.](#)

Download PDF: 06.05.2025

ETH-Bibliothek Zürich, E-Periodica, <https://www.e-periodica.ch>

chronic invalids, whose accommodation has hitherto been inadequate. There is to be one smaller medical and one smaller surgical department for acute cases. The department for chronic invalids is to form the nucleus of the Municipal Hospital. In the form of design account has to be taken of the fact that chronic invalids must remain in hospital for months or years and that for them the hospital becomes a home and permanent environment on which they depend for their human relations, occupation and entertainment.

The new buildings are situated in an advantageous part of the hospital site where they receive the maximum sunshine. They consist in essence of ward units arranged side by side facing the south. The grouping of the single blocks gives rise to courts and areas sheltered from the wind. The ward units for chronic invalids are sited on the east side of the rise with its fine views and overlook the southern hospital garden. The ward units acute cases are sited on the west side in the rear depression with uninterrupted views of the south-west hospital garden. They are connected to the rest of the hospital by the main building, which stands at right angles to the slope. The western hospital garden lies one storey lower than the entrance courtyard on the east side of the main building.

Costs

Hospital building including the technical installations.	19 600 000 Fr.
Staff residences	2 250 000 Fr.
Furniture and fittings	3 630 000 Fr.
Acquisition of land	250 000 Fr.
Site work, building services, sewerage	2 980 000 Fr.
Construction of the approach road	1 190 000 Fr.
	29 900 000 Fr.

Shop of Intérieur S.A., Zurich (pages 311-313)

In fitting out the shop, arrangements had to be made so that the furniture on show could be combined in a number of different ways. For this purpose light adjustable metal frames with Pavatex filling in cinnabar red, lemon yellow, violet, and light and dark green were made. These units are freely exchangeable and can also be placed transversely in three parts. The groups of furniture in compartment-like arrangements divide up the sales room in lively fashion by means of their accents of colour and form.

Alterations to the shop of Wohnbedarf A.G., Basle (pages 314-317)

The problem was to convert a shop in an old-fashioned quarter 44 metres in length and 7 metres in width at the widest point with rooms of different heights and at various levels. The display should consist of well-organized groups, but should avoid giving the impression of a «finished room» and stimulate the customer to devise combinations of his own.

In order to avoid a corridor-like effect in the disproportionately long room, there are three walls beneath the skylight, one of which is fitted up as an office cabinet. By the inclusion of a gallery, the show-case area could be raised to the level of the display so that customers can see round the whole 44-metre long shop without using a staircase. The gallery also enables customers to view the part of the room placed at a lower level without going down the steps.

Thonet Chair Exhibition, New York (page 318)

From August 12th to October 4th the Museum of Modern Art, New York, held an exhibition marking the 100th anniversary of Thonet Bros. Inc. and displaying the pioneer achievements of the firm. Thirteen selected types of chair, dating from 1836 to 1952, demonstrated the exemplary manner in which Thonet Bros. have made an important and decisive contribution to the development of good style in chairs by means of their production and design.

Freely combinable wall cupboard units (page 319)

In view of the need for greater concentration, the sectional wall cupboard units illustrated here were developed. They can be adjusted to fit rooms of various heights, freely combined in a number of different ways and suit the many and varied demands of modern living. The adjustable units are fixed to supports which are spanned between ceiling and floor and permit a wide range of combinations.

New creations in the interior decoration range (pages 320-323)

Under the style «Equipelement d'habitation» the interior decorators Charlotte Perriand and Martha Villiger together with Jean Prouvé have created new types of mass-produced furniture. This is an attempt to find a solution to the problem of furnishing flats in regard to both free-standing and built-in furniture on an industrial basis. In order to meet the demand in modern flats for space-saving built-in shelves, cupboards and whole walls of lockers and to make their production economically possible, new methods of construction have been developed which permit the prefabricated cupboard units to be prepared according to the desired dimensions in the factory and then installed in the building. Thanks to the very adaptable mode of manufacture, it has been possible to expand the original programme and the same units have been used not only in flats but also in hotels, boarding establishments, shops, schools etc.

The House in the Hall (pages 324-325)

The house is supported by steel piers and has a living-room occupying two storeys, a bedroom and a nursery, hall, kitchen and bath. It is so placed in the hall that its upper storey is on the same level as the gallery of the vestibule and the house is also accessible from the first storey of the school building, which is the gallery. The house may be entered from the hall by means of a staircase.

Combined living-room and study in a block (pages 326-327)

The dimensions of rooms in newly-built blocks of flats leave little free space. Thus in order to make a large room in a flat of this kind on the eleventh floor of a tall block of flats at Grindelberg in Hamburg the partition between two rooms was removed. In this way a room was created which runs the full depth of the building and is glazed from floor to ceiling on the eastern and western sides.

Alterations to a shop for light fixtures (pages 328-329)

The old sales room, which had only a single show window, was to be resited in a newly available corner shop with less floor space and wall area but four show windows in a very advantageous position. Communication with the sales and display rooms on the first floor, the dispatch department, the stock room, and the repair and assembly shops in the basement was to be provided by a new passenger lift. On the first floor a new department for washing-machines and refrigerators was to be arranged, the radio and television department re-organized and, if possible, a large display room created. Furthermore a department office and demonstration rooms or spaces for washing-machines, mixers, vacuum cleaners, television sets and single electroliers were desired.

Heluan carpets (page 334)

Whereas the earliest of Gauchat's designs were simply determined by the weaving technique, and the natural colours of white, fawn, light brown, dark brown, grey, black and chestnut lent the Heluan its character, he is now attempting a richer patterning of geometric simplicity (still with undyed wool) in the technically complicated weaving style of the "Bedouin Kelims".

Tisca carpets (page 335)

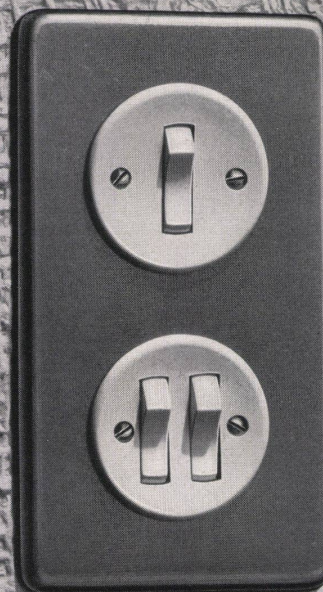
Honegger expresses himself in forms ranging from the simple harmony of two colours in geometric stripes and shapes consisting of organic curves in a rich colour scale to the mural decoration itself executed in pictorial reproductions. Further variations are provided by the cutting out of reliefs in the pile, and these give the room a quiet colour note. Moreover the attempt has been made for the first time to print fine patterns on long-piled carpets. The collection also contains long-piled carpets with spaces left bare so that the woven base, which is partly coloured, can be seen.

New Waron carpets (page 336)

A new advance in textile technology has made it possible to produce the largest and smallest sizes up to a maximum width of 11 metres and a length of 13.5 metres in one piece. The technique of weaving employed in the manufacture of Waron carpets also enables designs with sharply delimited and contrasted surfaces to be produced.

Neue GARDY-Wippenschalter mit Silberpunktkontakten und hohem Kontaktdruck sind elegant, leicht zu betätigen, geräuschlos und unverwundlich

Schemata
0 1- und 2polig
1 1polig
3 1polig
6 1polig
30 1polig
38 1polig

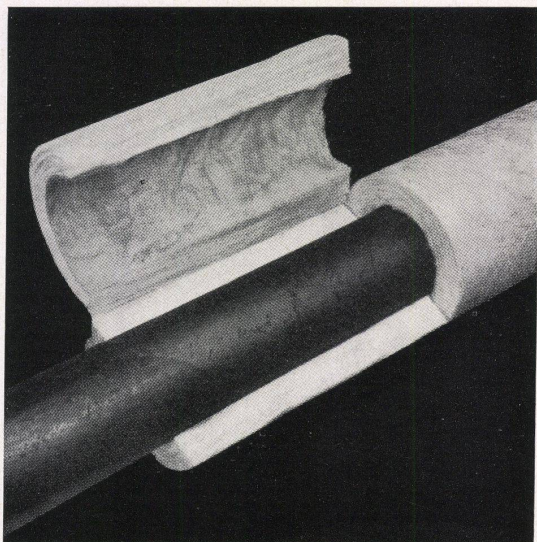


GARDY

Generalvertretung mit Fabriklager

Elektro-Material A.G.

Zürich · Basle · Bern · Genf · Lausanne · Lugano



VETROFLEX SCHALEN

Isolierung von Leitungen

Schnelle, einfache und billige Montage

GLASFASERN AG.

Verkaufsbüro Zürich, Nüscherstr. 30

Empfehlungsliste von Firmen, welche am Bau des Stadthospitals Waid beteiligt waren

Kunststeinarbeiten	Steinwerk AG., Überlandstraße 105, Zürich Favre & Co. AG., Richtiststraße 8, Wallisellen
Kunststeintreppen	Spezialbeton AG. Staad, Räfelstraße 11, Zürich
Isoliermatten	Cavin & Co., Talstraße 62, Zürich
Dachdeckerarbeiten	Emil Waller, Lessingstraße 41, Zürich Hch. Fretz, Rotbuchstraße 1a, Zürich
Guß-Asphalt	Asphalt-Emulsion AG., Löwenstraße 11, Zürich
Klebedächer	W. Frick-Glaß AG., Altstetterstraße 105/107, Zürich Meynadier & Co. AG., Vulkanstraße 110, Zürich
Spenglerarbeiten	Rud. Bänninger, Färberstraße 31, Zürich SADA Spenglerarbeiter-Genossenschaft, Zeughausstraße 43, Zürich Jak. Scherrer Söhne, Allmendstraße 5/7, Zürich Otto Schondorff, Winkelriedstraße 4, Zürich
Sanitäre Installation	SADA Spengler-Sanitär-Dachdecker-genossenschaft, Zeughausstraße 43, Zürich Rob. Bader, Wunderlinstraße 25, Zürich Benz & Co., Universitätstraße 69, Zürich Gebr. Lincke AG., Ausstellungsstraße 39, Zürich

Chromstahl-Spültisch
Isolierungen für Sanitär und Heizung

Rohr-Isolierungen

Wäsche-Trockne-Maschine
Heizung und Ventilation

Elektrische Installation

Stockwerk-Tableau für den Behandlungs- und Operations-Trakt
Personen- und Warenaufzüge

Gipserarbeiten

Bau-Austrocknung
Glaserarbeiten

Schreinerarbeiten

Sanitär-Bedarf AG., Kreuzstraße 54, Zürich
Karl Werner Isolierwerk AG., Affolternstraße 145/147, Zürich
Glasfasern AG., Nüscherstraße 30, Zürich
Isolag AG., Albisstraße 8, Zürich
A. Mazzi, Ackersteinstraße 2, Zürich
Alb. von Rotz, Basel
Heinrich Lier, Badenerstr. 440, Zürich
Hälg & Co., Kanzleistraße 19, Zürich
Ventilator AG., Stäfa ZH
Henri Wegmann, Technikumstraße 82, Winterthur
Baumann, Koelliker AG., Sihlstraße 37, Zürich
Xamax AG., Birchstraße 210, Zürich

Schindler-Aufzüge- und -Motoren-AG., Glärnischstraße 31, Zürich
Schweizerische Wagon- und Aufzüge-Fabrik AG., Schlieren
Gipser- und Maler-Genossenschaft, Flurstraße 110, Zürich
Hans Krüger, Ingenieur, St. Gallen
E. Göhner AG., Hegibachstraße 47, Zürich
J. Gloor, Imbisbühlstraße 149, Zürich
Julius Hartmann, Wannenhofstraße 2, Zürich
E. Göhner AG., Hegibachstraße 47, Zürich
U. Lienhard Söhne, Albisstraße 131, Zürich
Ernst Wieland, Florastraße 20, Zürich
Breitinger & Hampp, Singlistraße 5, Zürich
Hans Jegen, Rotbuchstraße 30, Zürich



A. Batz + Co.
Zürich 7

Waserstraße 16
Telephon 051 / 32 35 71

Möbelwerkstätte
Spezialität: Sitzmöbel
in allen Formen