

**Zeitschrift:** Bauen + Wohnen = Construction + habitation = Building + home : internationale Zeitschrift

**Herausgeber:** Bauen + Wohnen

**Band:** 33 (1979)

**Heft:** 10

**Artikel:** Impressionen von der 19. Mailänder Möbelmesse = 19ème Foire du Meuble à Milan = 19th furniture fair in Milan

**Autor:** Mühlestein, Britt-Mari

**DOI:** <https://doi.org/10.5169/seals-336359>

### **Nutzungsbedingungen**

Die ETH-Bibliothek ist die Anbieterin der digitalisierten Zeitschriften. Sie besitzt keine Urheberrechte an den Zeitschriften und ist nicht verantwortlich für deren Inhalte. Die Rechte liegen in der Regel bei den Herausgebern beziehungsweise den externen Rechteinhabern. [Siehe Rechtliche Hinweise.](#)

### **Conditions d'utilisation**

L'ETH Library est le fournisseur des revues numérisées. Elle ne détient aucun droit d'auteur sur les revues et n'est pas responsable de leur contenu. En règle générale, les droits sont détenus par les éditeurs ou les détenteurs de droits externes. [Voir Informations légales.](#)

### **Terms of use**

The ETH Library is the provider of the digitised journals. It does not own any copyrights to the journals and is not responsible for their content. The rights usually lie with the publishers or the external rights holders. [See Legal notice.](#)

**Download PDF:** 08.02.2025

**ETH-Bibliothek Zürich, E-Periodica, <https://www.e-periodica.ch>**

# Impressionen von der 19. Mailänder Möbelmesse

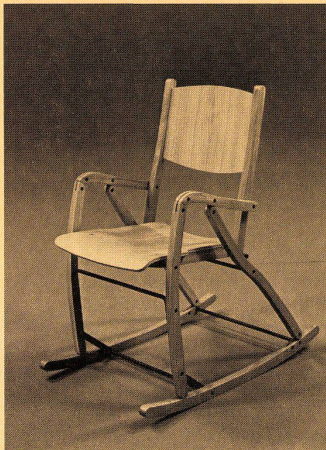
Zusammengestellt von Britt-Mari Mühlestein

19ème Foire du Meuble à Milan

Impressions rassemblées par Britt-Mari Mühlestein

19th Furniture Fair in Milan

Impressions gathered by Britt-Mari Mühlestein



1

1-5  
Aus dem Programm G. B. Bernini S.p.A.,  
Carate Brianza.

Tiré du programme G. B. Bernini S.p.A.,  
Carate Brianza.

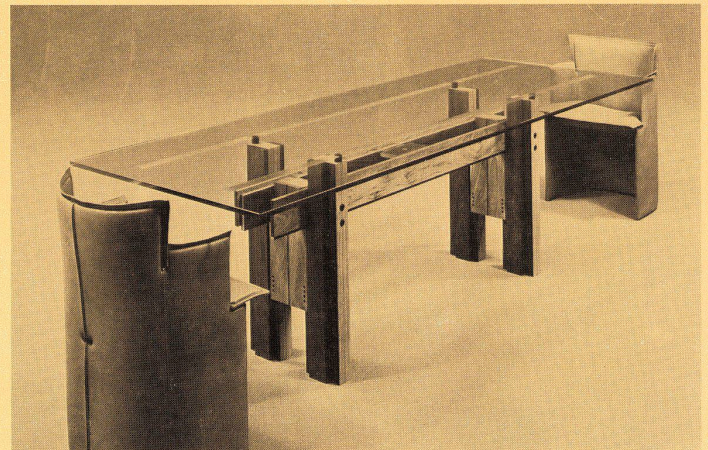
From the programme of G. B. Bernini  
S.p.A., Carate Brianza.

1 Verstellbarer Schaukelstuhl von R.  
Rossini / Chaise à bascule réglable de  
R. Rossini / Adjustable rocking-chair  
by R. Rossini

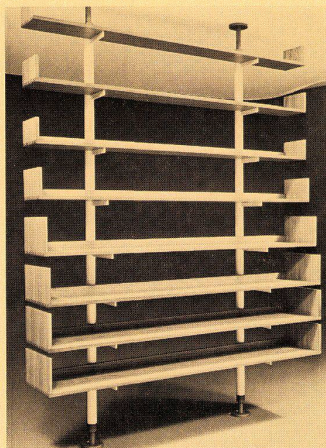
2 Tisch und Sessel von F. Poli / Table et  
fauteuil de F. Poli / Table and easy-  
chair by F. Poli

3 Regal von C. Scarpa / Etagère de C.  
Scarpa / Bookshelf by C. Scarpa

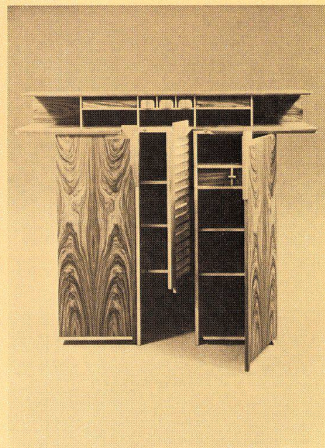
4,5 Kommode und Bett von R. Heide /  
Commode et lit de R. Heide / Dresser  
and bed by R. Heide



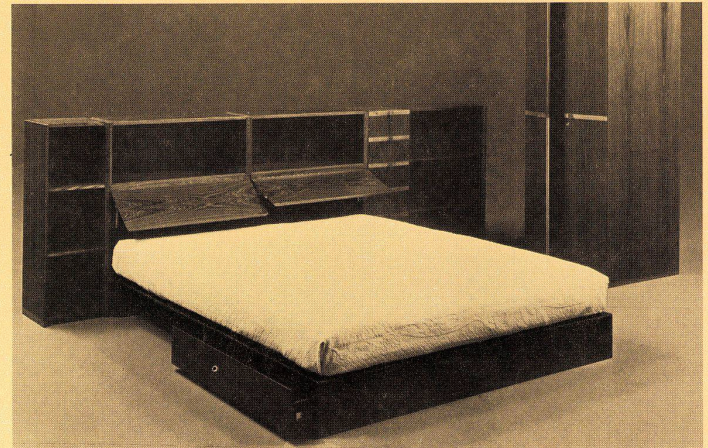
2



3



4



5



6

6 Garderobe der Firma BIMAR S.r.l., S. Lucia  
di Piave (Treviso). Entwurf Foltran und  
Vedora.

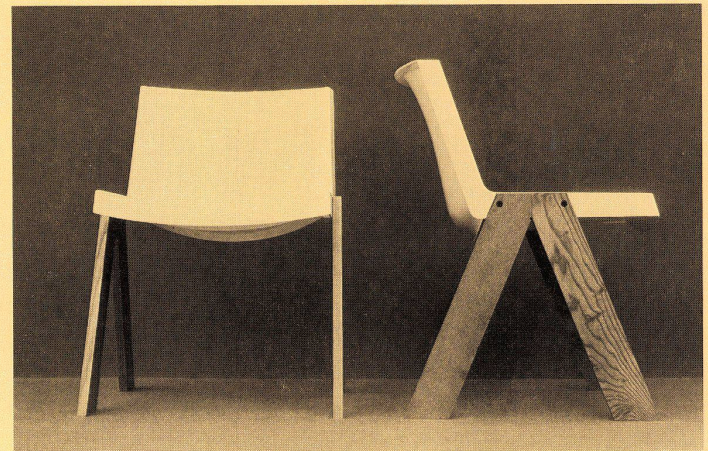
Vestiaire de la firme BIMAR S.r.l., S. Lucia  
di Piave (Treviso). Projet Foltran et  
Vedora.

Wardrobe by the firm of BIMAR S.r.l., S.  
Lucia di Piave (Treviso). Foltran and  
Vedora design.

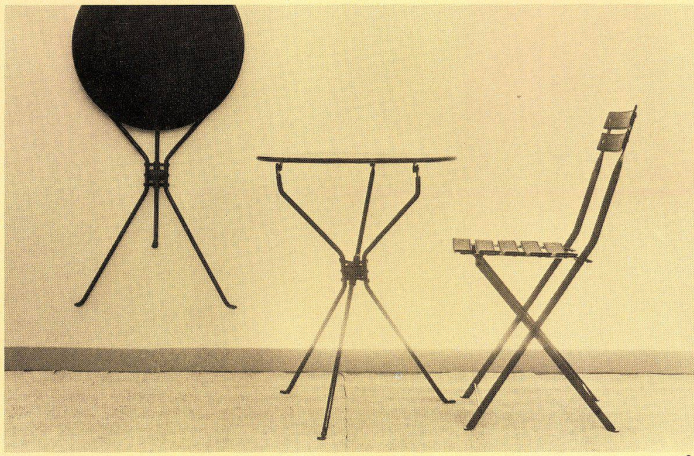
7 Stapelbarer Sessel mit Kunststoffsitz-  
schale von Artemide S.p.A., Pregnana Mi-  
lanese (Milano). Entwurf L/O.

Fauteuil empilable avec coque en matière  
plastique de Artemide S.p.A., Pregnana  
Milanese (Milan). Projet L/O.

Stackable easy-chair with plastic seat by  
Artemide S.p.A., Pregnana Milanese (Mi-  
lan). Design L/O.



7



8

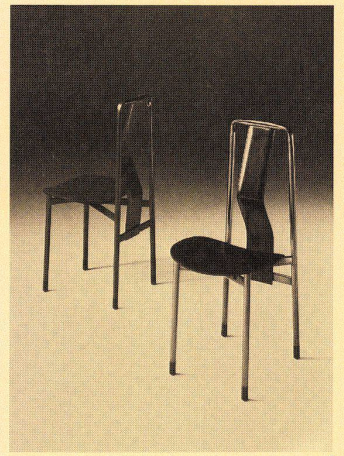
8-12  
Aus dem Programm Zanotta S.p.A., Nova Milanese (Milano).  
Tiré du programme Zanotta S.p.A., Nova Milanese (Milan).  
From the programme of Zanotta S.p.A., Nova Milanese (Milan).

8 Klapptisch von A. Castiglioni, Stuhl von Zanuso / Table rabattable de A. Castiglioni, chaise de Zanuso / Folding table by A. Castiglioni, chair by Zanuso

9 Stuhl von A. Castiglioni / Chaise de A. Castiglioni / Chair by A. Castiglioni

10, 11 Marmorplattentische von P. Noever / Tables en dalles de marbre de P. Noever / Marble-topped tables by P. Noever

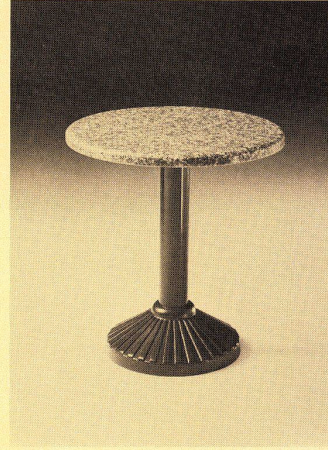
12 Stapelbarer Stuhl von G. Stoppino / Chaise empilable de G. Stoppino / Stackable chair by G. Stoppino



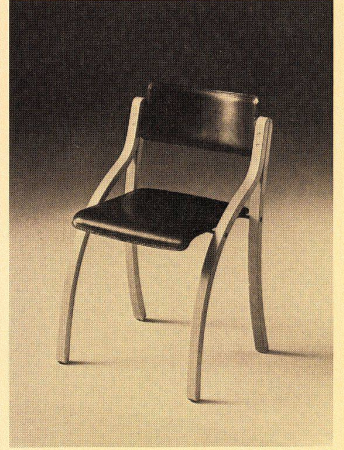
9



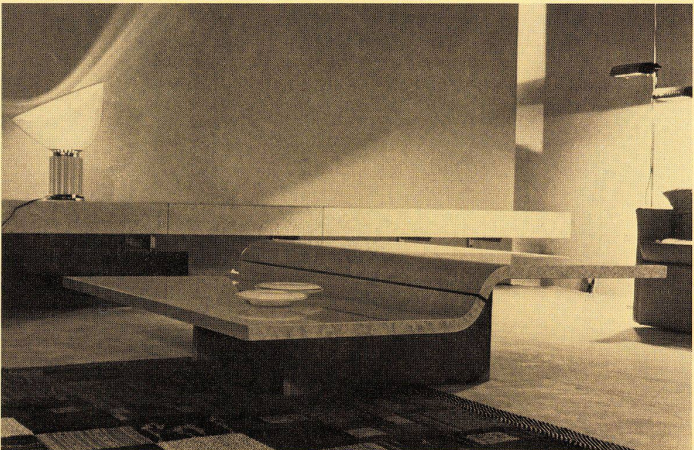
10



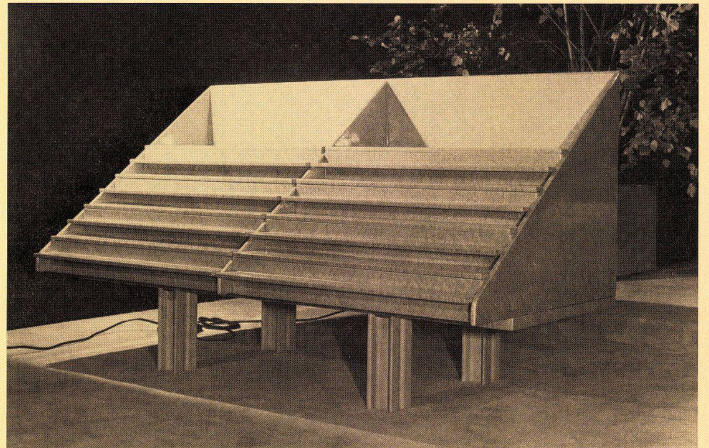
11



12



13



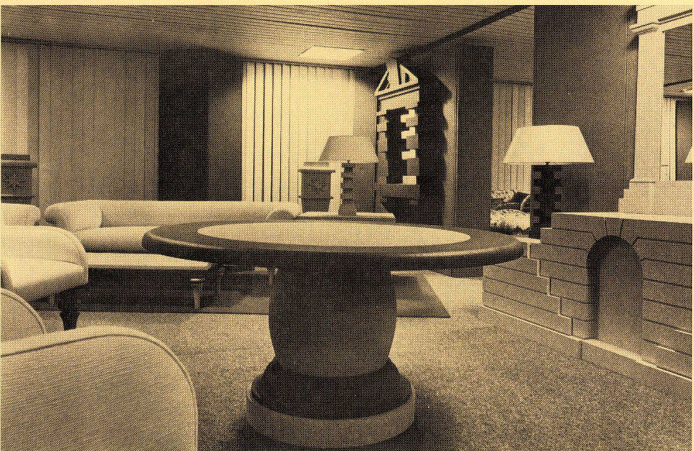
14

13, 14  
Aus dem Programm Saporiti, Besnate (Varese).  
Tiré du programme Saporiti, Besnate (Varese).

From the programme by Saporiti, Besnate (Varese).

13 Tisch von Passarello / Table de Passarello / Table by Passarello

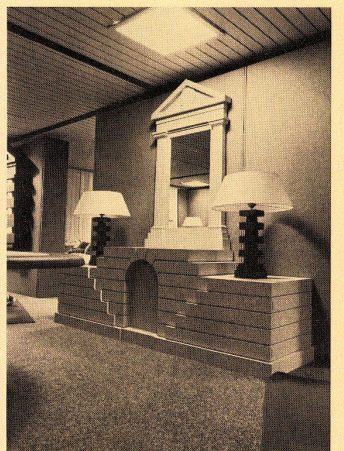
14 Kommode von G. Offredi / Commode de G. Offredi / Dresser by G. Offredi



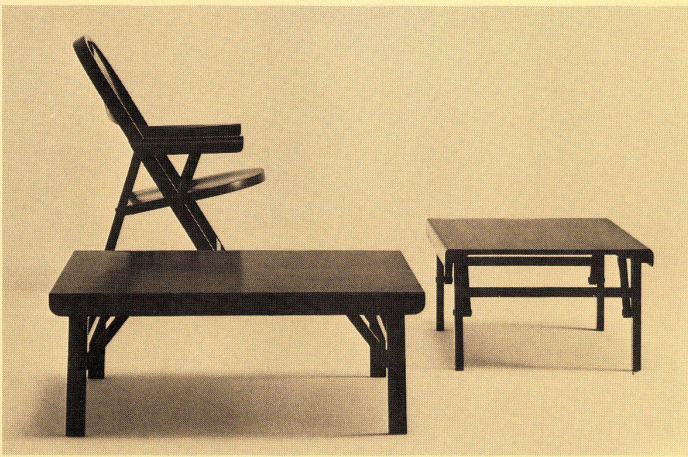
15

15, 16  
Aus dem Programm »Linea Palazzo« von Vivai S.r.l., Roma. Entwurf Sam Verts.  
Tiré du programme »Linea Palazzo« de Vivai S.r.l., Rome. Projet de Sam Verts.

From the programme "Linea Palazzo" by Vivai S.r.l., Rome. Design by Sam Verts.



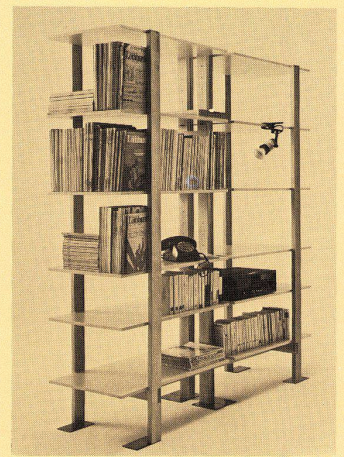
16



17



18



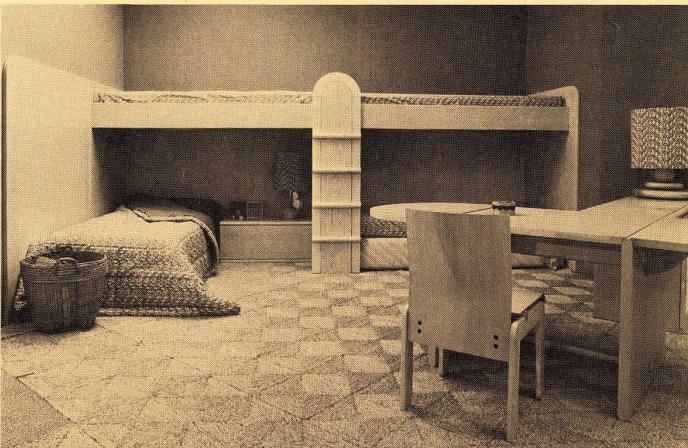
19



20



21



22

17-19

Aus dem Programm Bonacina S.r.l., Meda. Klappmöbel und Regal von A. Castiglioni. Tiré du programme Bonacina S.r.l., Meda. Meuble pliant et étagère de A. Castiglioni. From the programme by Bonacina S.r.l., Meda. Folding furniture and bookshelf by A. Castiglioni.

20, 21

Aus dem Programm Molteni & C., Giussano (Milano). Schrankmöbel, Werksentwürfe. Tiré du programme Molteni + C., Giussano (Milan). Meubles armoire, projets du fabricant. From the programme by Molteni & C., Giussano (Milan). Cupboard units, factory designs.

22

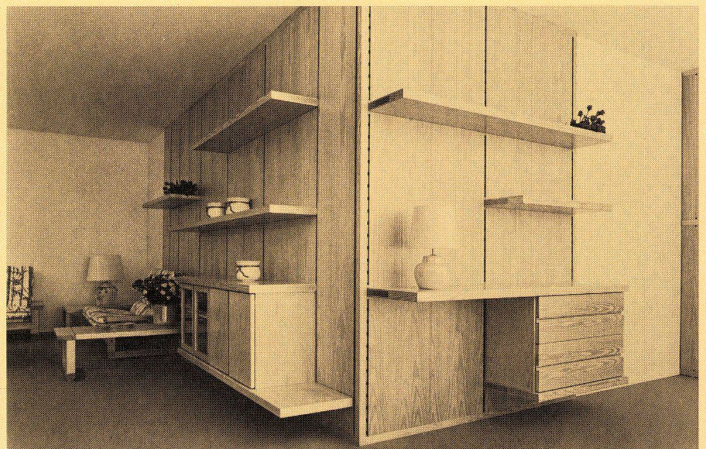
Schlafzimmereinrichtung von BIMAR S.r.l., S. Lucia di Piave (Treviso). Entwurf Fortran und Vedova. Chambre à coucher de BIMAR S.r.l., S. Lucia di Piave (Treviso). Projet Fortran et Vedova. Bedroom furnishings by BIMAR S.r.l., S. Lucia di Piave (Treviso). Fortran and Vedova design.

23

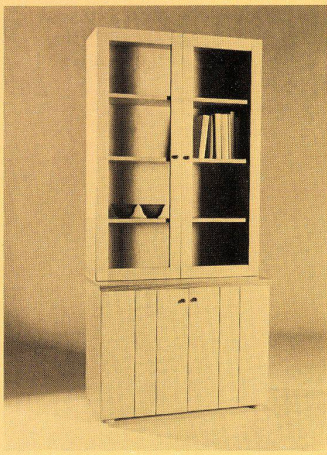
Schrankwand von Artieri del Legno S.p.A., Altavilla Vicentina (Vicenza). Entwurf G. Coslin. Mur de rangement de Artieri del Legno S.p.A., Altavilla Vicentina (Vicence). Projet G. Coslin. Cupboards by Artieri del Legno S.p.A., Altavilla Vicentina (Vicenza). Design by G. Coslin.



23



24



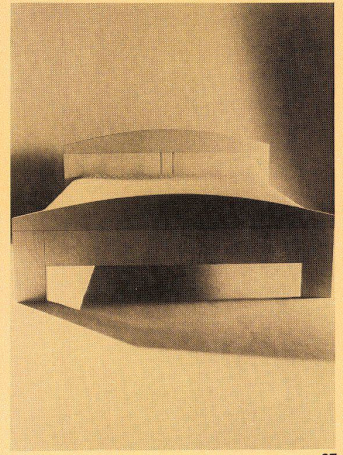
25



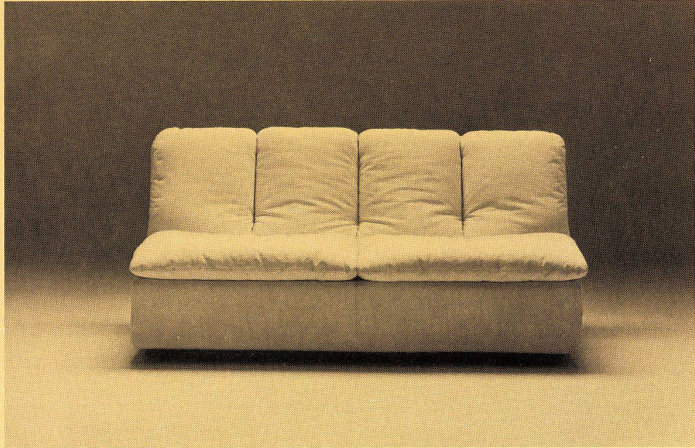
26

24  
 Wandregale von Proserpio Figgli di Antonio S.p.A., Giussano (Milano). Entwurf S. Parravicini.  
 Mur de rangement de Proserpio Figgli di Antonio S.p.A., Giussano (Milan). Projet S. Parravicini.  
 Wall shelves by Proserpio Figgli di Antonio S.p.A., Giussano (Milan). Design by S. Parravicini.

25-27  
 Aus dem Programm Porro Industria Mobili, Montesolaro (Como). Schrankmöbel und Bett von F. Menna.  
 Tiré du programme Porro Industria Mobili, Montesolaro (Come). Meuble armoire et lit de F. Menna.  
 From the programme by Porro Industria Mobili, Montesolaro (Como). Cupboard and bed by F. Menna.



27

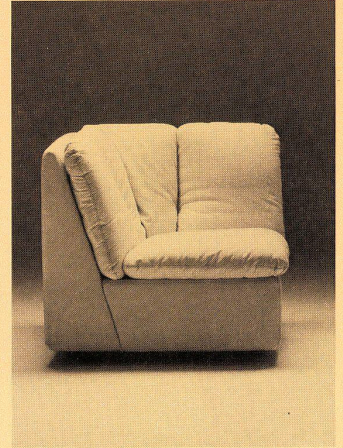


28

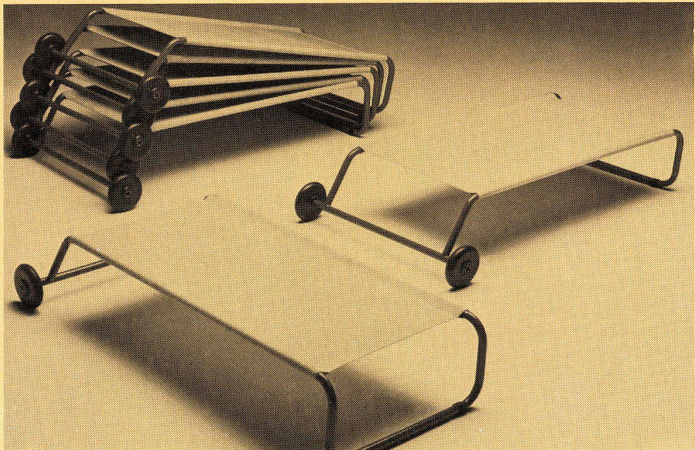
28, 29  
 Polstermöbel, Bank- und Eckteil von Brunati S.p.A., Meda (Milano). Werksentwurf. Sièges rembourrés. Banquette et siège d'angle de Brunati S.p.A. (Milan). Projet du fabricant.  
 Sofas, bench and corner seat by Brunati S.p.A., Meda (Milan). Factory design.

30-32  
 Aus dem Programm Kartell, Binasco (Milano).  
 Tiré du programme Kartell, Binasco (Milan).  
 From the programme by Kartell, Binasco (Milan).

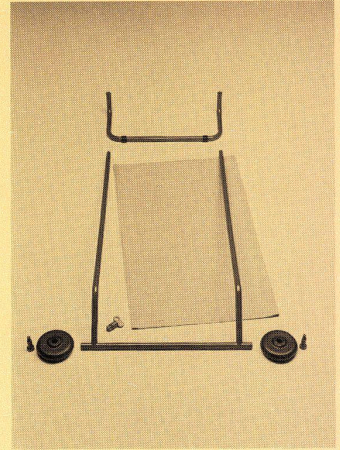
30, 31 Liegesitze von Centrokappa / Chaise-longue de Centrokappa / Chaise longue by Centrokappa  
 32 Stühle von A. Castelli Ferrieri / Chaises de A. Castelli Ferrieri / Chairs by A. Castelli Ferrieri



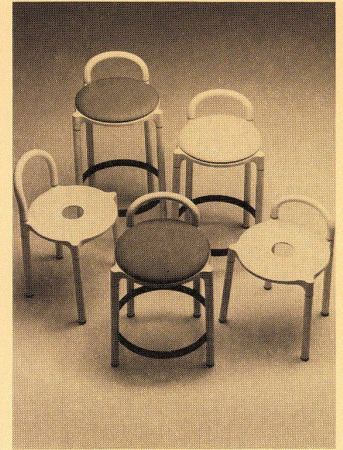
29



30



31

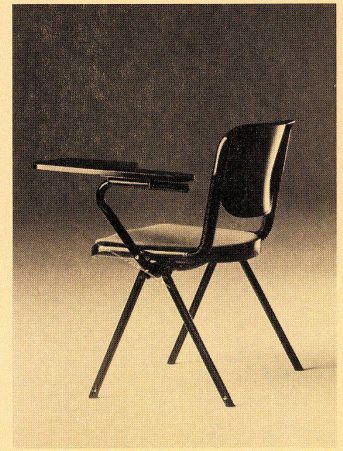


32



33

33-34  
 Aus dem Programm von Castelli S.p.A., Imola und Ozzano (Bologna).  
 Arbeitsstühle von E. Ambasz und G. Pretti.  
 Tiré du programme de Castelli S.p.A., Imola et Ozzano (Bologne).  
 Chaise de travail de E. Ambasz et G. Pretti.  
 From the programme by Castelli S.p.A., Imola and Ozzano (Bologna).  
 Working chairs by E. Ambasz and G. Pretti.



34