

Zeitschrift: Swiss review : the magazine for the Swiss abroad
Herausgeber: Organisation of the Swiss Abroad
Band: 38 (2011)
Heft: 4: 2011 parliamentary elections

Rubrik: Images : retrospective

Nutzungsbedingungen

Die ETH-Bibliothek ist die Anbieterin der digitalisierten Zeitschriften. Sie besitzt keine Urheberrechte an den Zeitschriften und ist nicht verantwortlich für deren Inhalte. Die Rechte liegen in der Regel bei den Herausgebern beziehungsweise den externen Rechteinhabern. [Siehe Rechtliche Hinweise.](#)

Conditions d'utilisation

L'ETH Library est le fournisseur des revues numérisées. Elle ne détient aucun droit d'auteur sur les revues et n'est pas responsable de leur contenu. En règle générale, les droits sont détenus par les éditeurs ou les détenteurs de droits externes. [Voir Informations légales.](#)

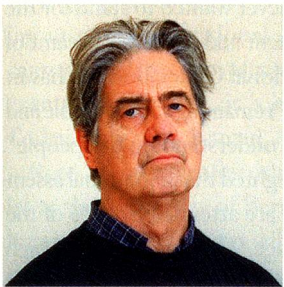
Terms of use

The ETH Library is the provider of the digitised journals. It does not own any copyrights to the journals and is not responsible for their content. The rights usually lie with the publishers or the external rights holders. [See Legal notice.](#)

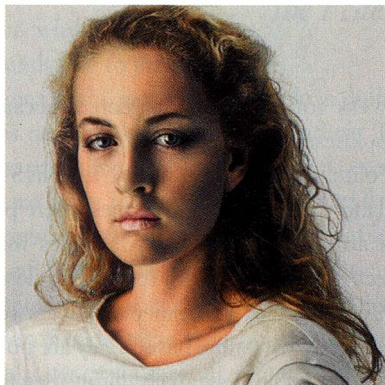
Download PDF: 28.04.2025

ETH-Bibliothek Zürich, E-Periodica, <https://www.e-periodica.ch>

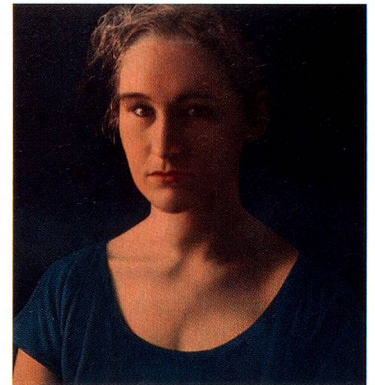
Retrospective. Franz Gertsch is an unassuming artist who does not like the limelight. The 81-year-old is nevertheless one of Switzerland's most important artists today. This resident of Rüschegg (canton of Berne) achieved international fame in the 1970s with his hyper-realistic portraits and drawings. These works are much sought after today by art collectors worldwide. He also produced large-format woodcuts that are technically unique. The "Kunsthau Zürich" is exhibiting a wonderful retrospective of Gertsch's work together with his recently completed "Four Seasons Cycle".



Franz Gertsch



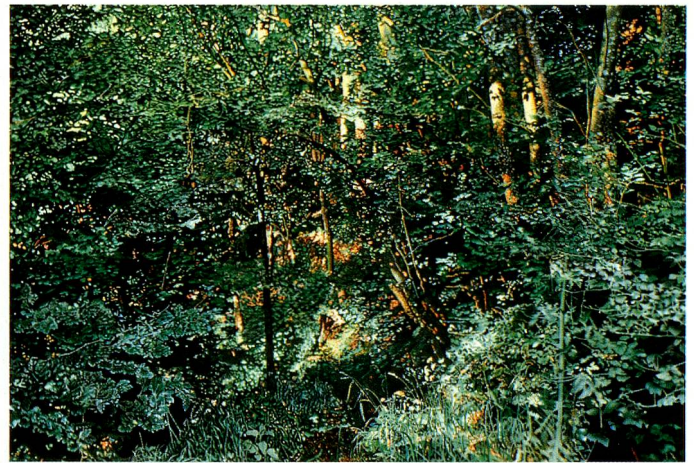
Johanna I 1983-1984, 330 x 340 cm, acrylic on cotton



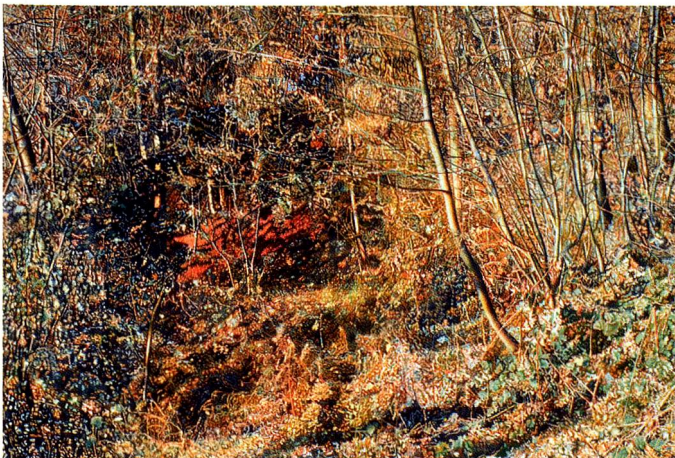
Silvia III, 2003-2004, 315 x 290 cm, mixed technique on cotton



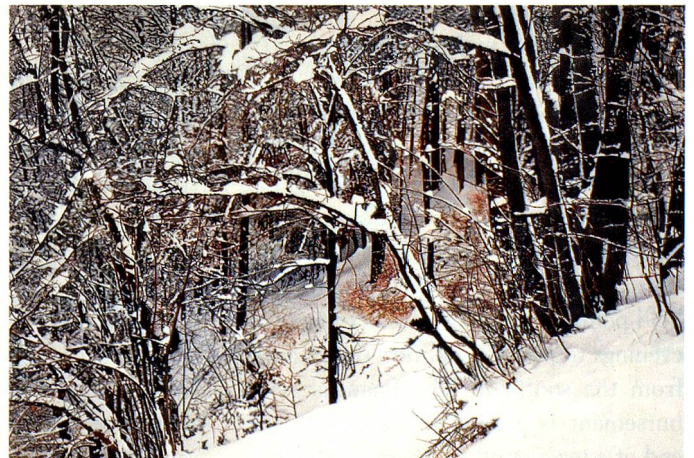
Spring 2011, 325 x 480 cm



Summer 2009, 325 x 490 cm



Autumn 2008, 325 x 490 cm



Winter 2009, 325 x 480 cm