

Zeitschrift: Swiss review : the magazine for the Swiss abroad
Herausgeber: Organisation of the Swiss Abroad
Band: 42 (2015)
Heft: 1

Rubrik: Images : when the mountains became the subject of art

Nutzungsbedingungen

Die ETH-Bibliothek ist die Anbieterin der digitalisierten Zeitschriften. Sie besitzt keine Urheberrechte an den Zeitschriften und ist nicht verantwortlich für deren Inhalte. Die Rechte liegen in der Regel bei den Herausgebern beziehungsweise den externen Rechteinhabern. [Siehe Rechtliche Hinweise.](#)

Conditions d'utilisation

L'ETH Library est le fournisseur des revues numérisées. Elle ne détient aucun droit d'auteur sur les revues et n'est pas responsable de leur contenu. En règle générale, les droits sont détenus par les éditeurs ou les détenteurs de droits externes. [Voir Informations légales.](#)

Terms of use

The ETH Library is the provider of the digitised journals. It does not own any copyrights to the journals and is not responsible for their content. The rights usually lie with the publishers or the external rights holders. [See Legal notice.](#)

Download PDF: 28.04.2025

ETH-Bibliothek Zürich, E-Periodica, <https://www.e-periodica.ch>

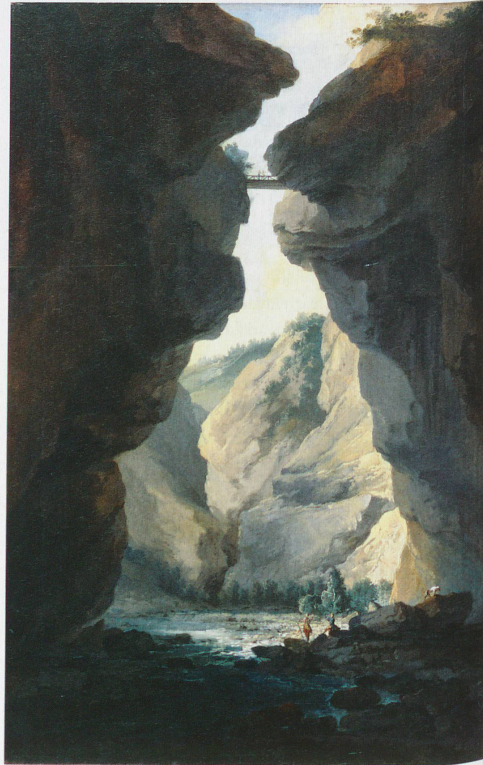
When the mountains became the subject of art

The Alps – as well as other mountain ranges – were first regarded as aesthetically appealing and “noble” during the course of the 18th century. Caspar Wolf – who was born in Muri in the canton of Aargau in 1735 and died in Heidelberg in 1783 – was one of the first people not only to document the largely undeveloped mountain regions but also to portray them artistically. He idealised the alpine landscape through dramatic lighting and unusual perspectives, such as from caves. The Museum of Fine Arts in Basel is holding an impressive exhibition of Caspar Wolf's work which also features paintings by a number of his contemporaries and recent photographs of some of these locations in the Alps.

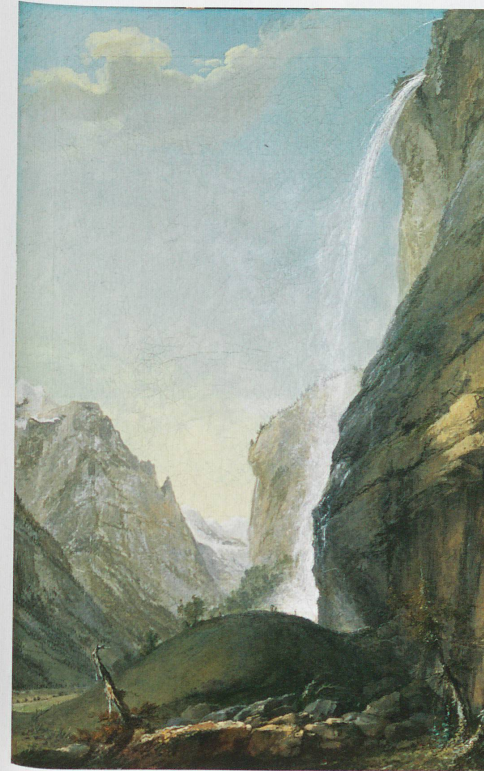
www.kunstmuseumbasel.ch



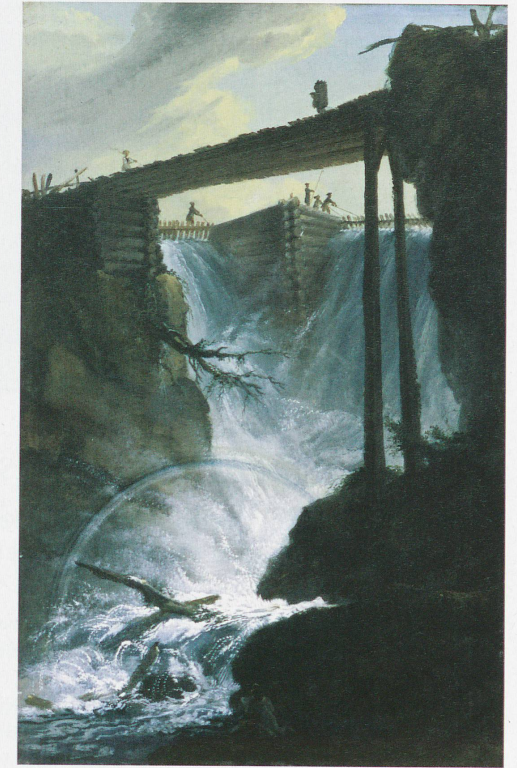
Panorama of the Grindelwald Valley with the Wetterhorn, Mettenberg, and Eiger



Dala Gorge near Leuk, exit Looking north



The Staubbachfall in summer



Weir near Mühletal, east of Innertkirchen



Gaden Valley with Tittlis, Wenden Glacier, Grassen and the Fünffingerstock



Lower Grindelwald Glacier, with the Lütischine River and Mettenberg



Rhône Glacier from the valley near Gletsch