

**Zeitschrift:** Eclogae Geologicae Helvetiae  
**Herausgeber:** Schweizerische Geologische Gesellschaft  
**Band:** 38 (1945)  
**Heft:** 2

**Anhang:** Tafeln  
**Autor:** [s.n.]

### **Nutzungsbedingungen**

Die ETH-Bibliothek ist die Anbieterin der digitalisierten Zeitschriften. Sie besitzt keine Urheberrechte an den Zeitschriften und ist nicht verantwortlich für deren Inhalte. Die Rechte liegen in der Regel bei den Herausgebern beziehungsweise den externen Rechteinhabern. [Siehe Rechtliche Hinweise.](#)

### **Conditions d'utilisation**

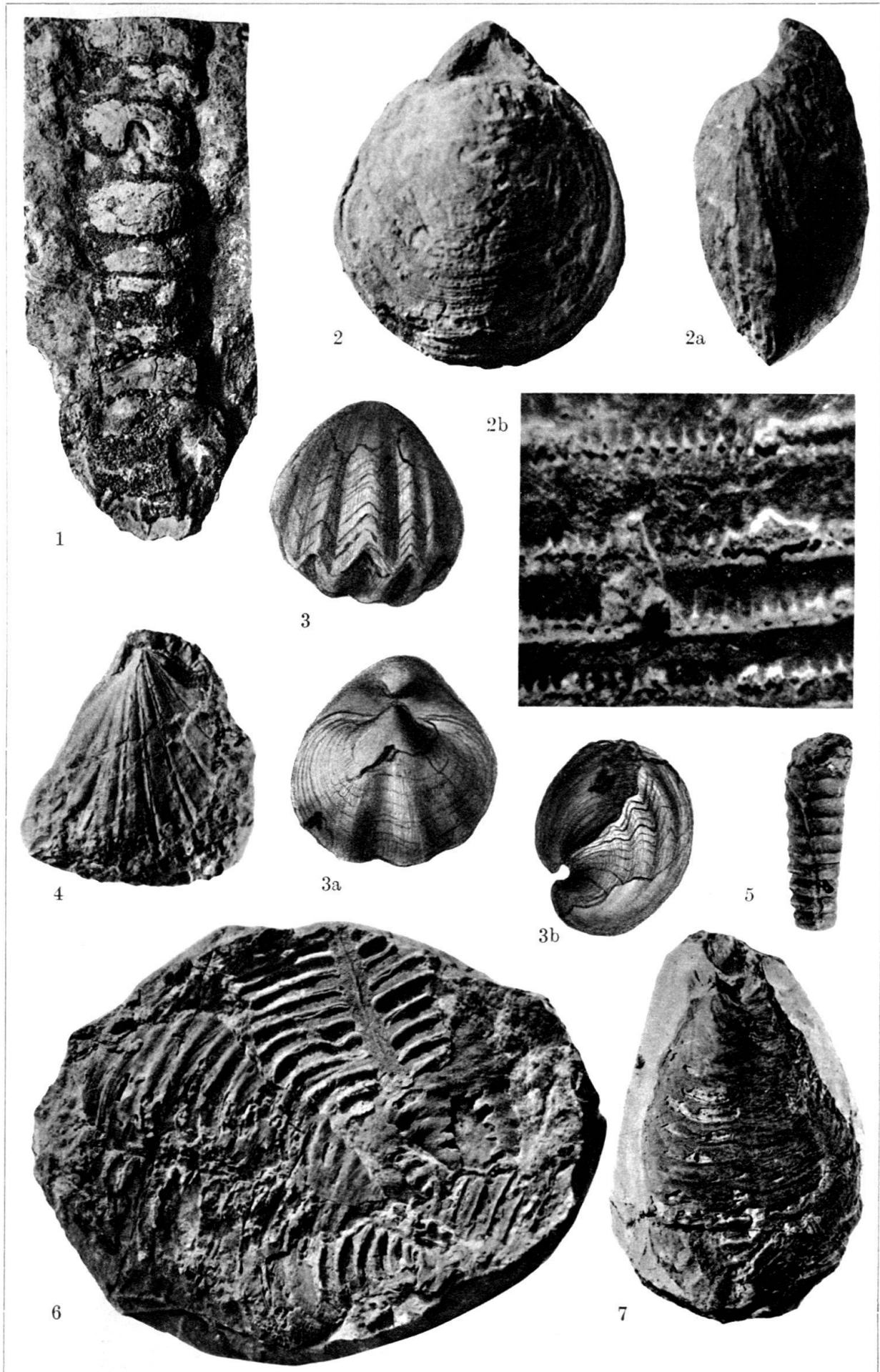
L'ETH Library est le fournisseur des revues numérisées. Elle ne détient aucun droit d'auteur sur les revues et n'est pas responsable de leur contenu. En règle générale, les droits sont détenus par les éditeurs ou les détenteurs de droits externes. [Voir Informations légales.](#)

### **Terms of use**

The ETH Library is the provider of the digitised journals. It does not own any copyrights to the journals and is not responsible for their content. The rights usually lie with the publishers or the external rights holders. [See Legal notice.](#)

**Download PDF:** 13.03.2025

**ETH-Bibliothek Zürich, E-Periodica, <https://www.e-periodica.ch>**



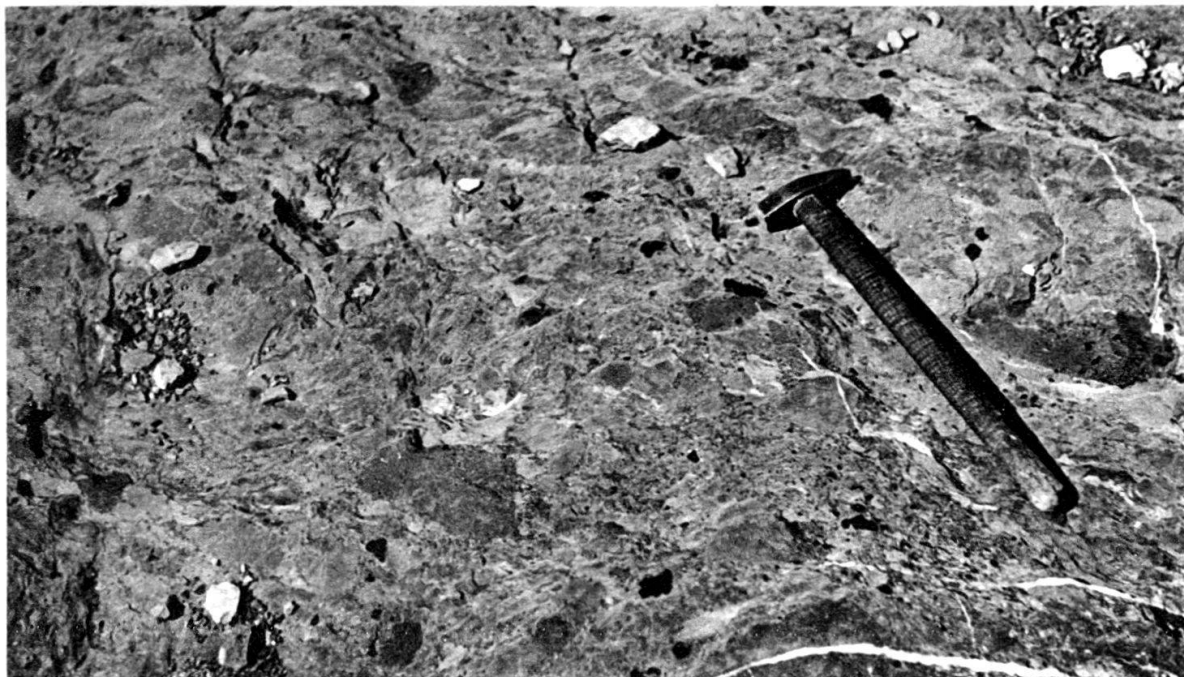


Fig. 1. Konglomerat aus Trümmern von Orbitolinenschichten und schwarzen Phosphoritknollen des Gault. Normalschenkel der Eocaenmulde in der N-Wand des Claridenstocks, ca. 25 m E vom Gletscherrand.

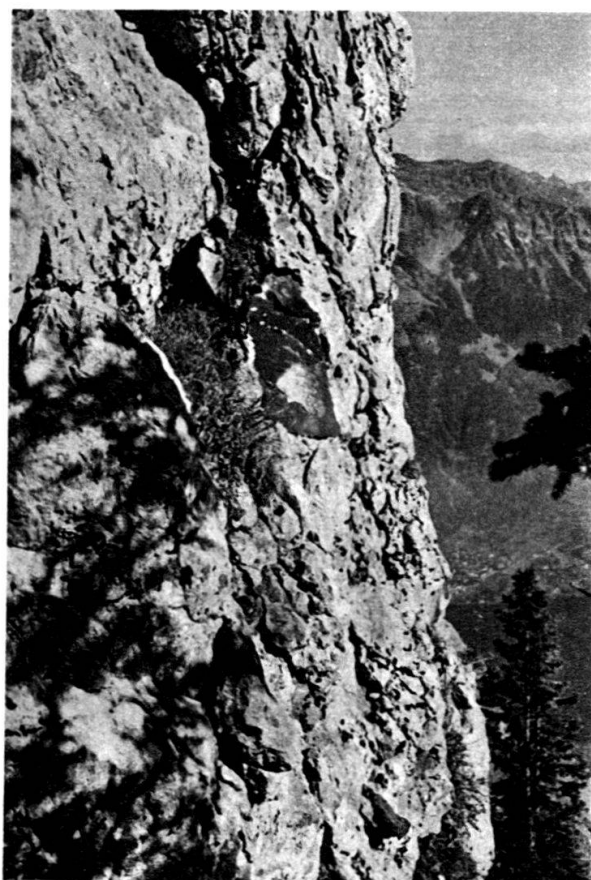
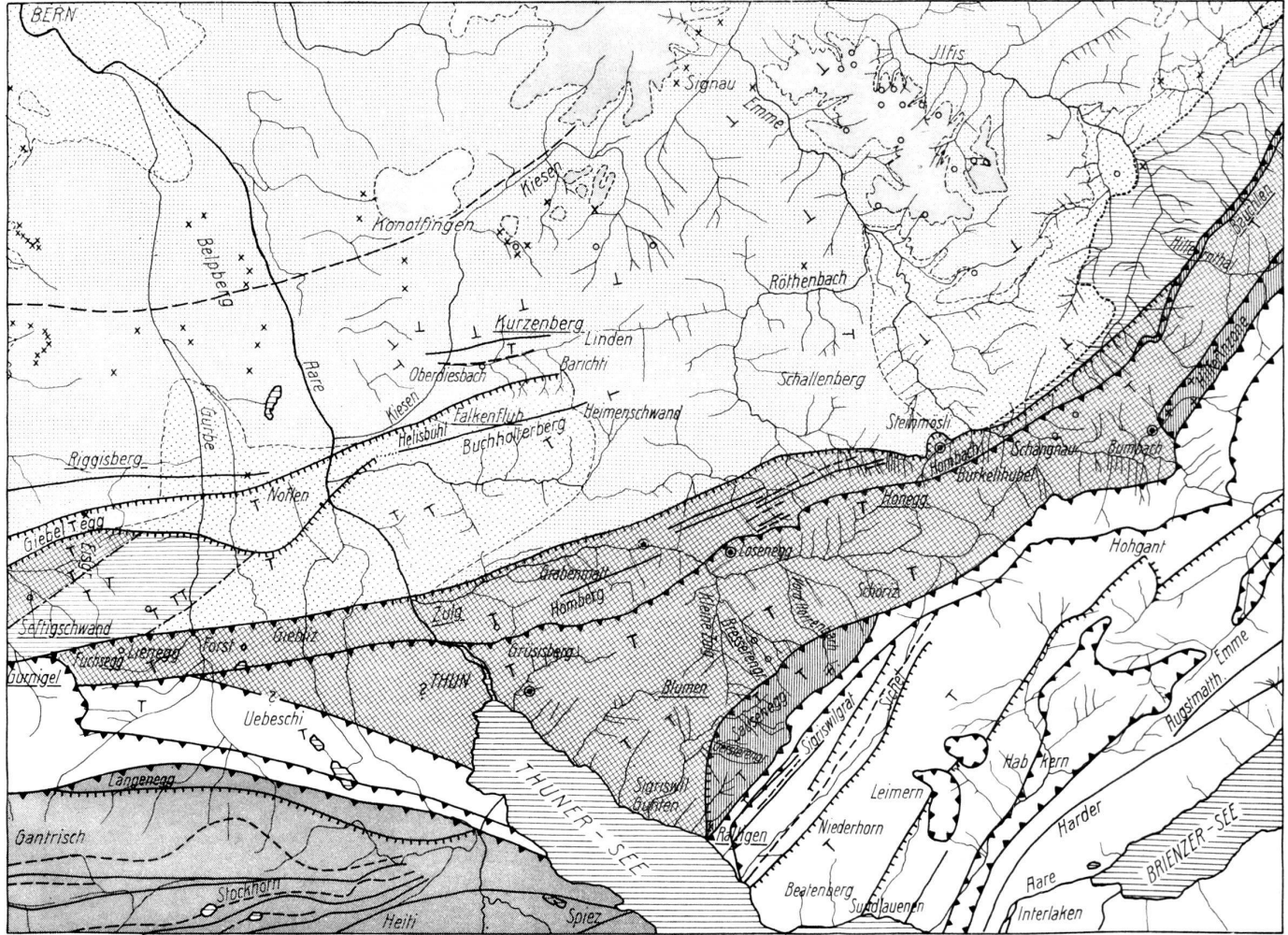


Fig. 2. Konglomerat aus Seewerkalktrümmern und einzelnen Gaultsandsteinblöcken (in der Bildmitte und am unteren Rand). W-Seite des obersten Felsturms am E-Rand des Kessels von Planken auf der N-Seite des Klöntals.

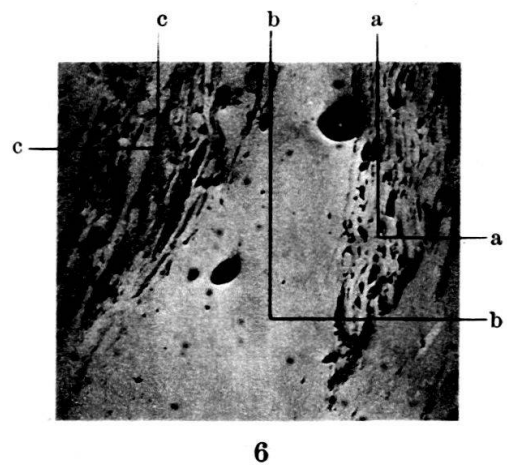
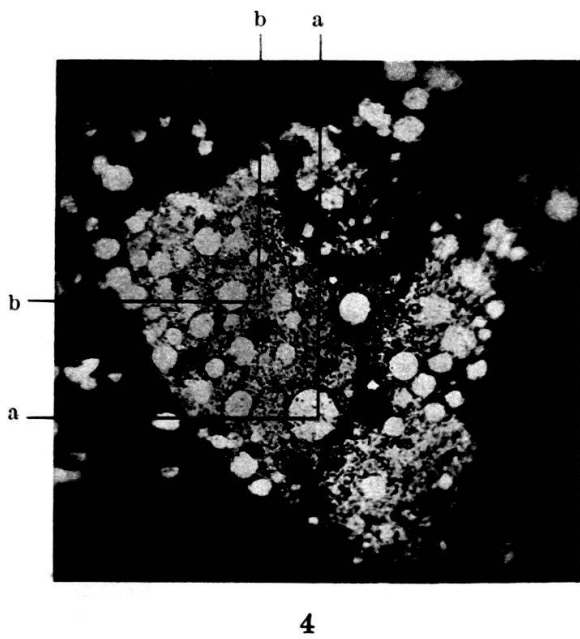
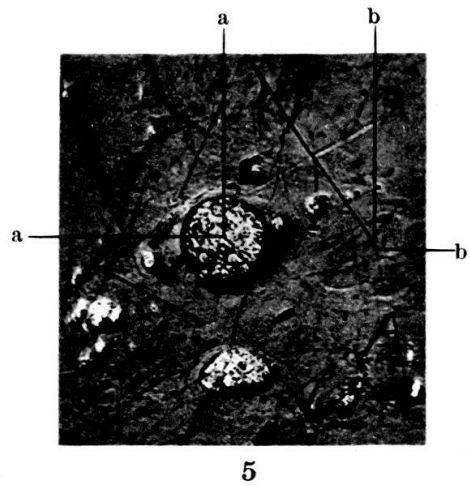
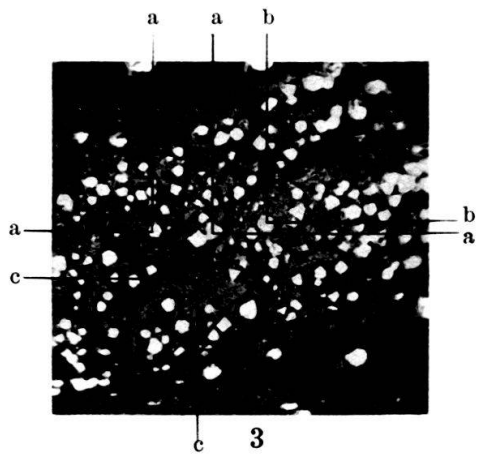
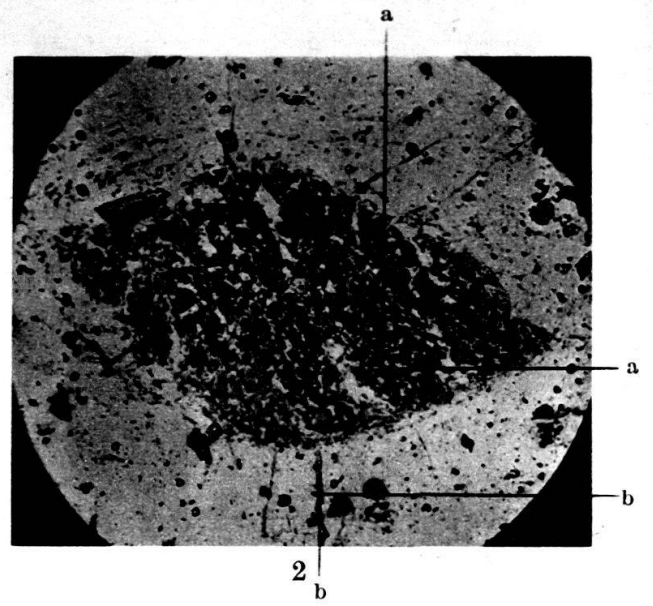
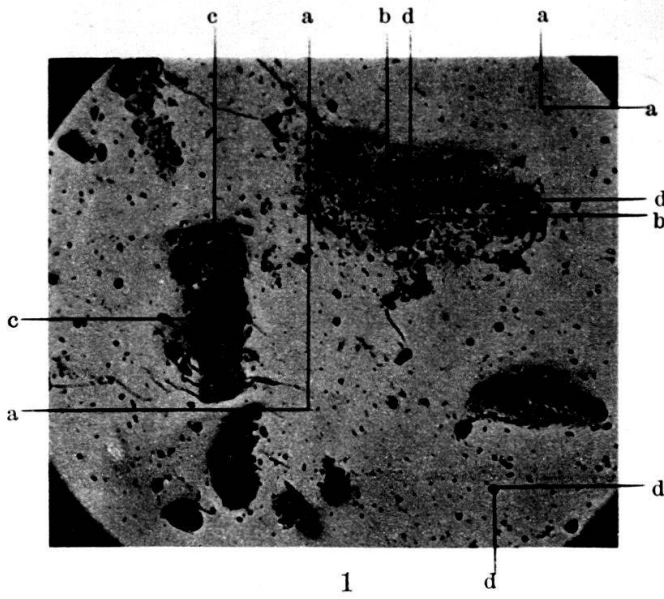
Tektonische Karte der subalpinen Molasse der Umgebung von Thun

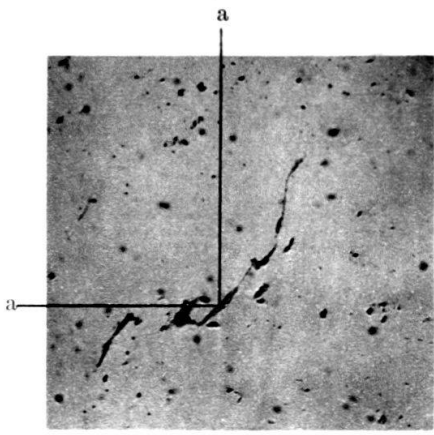
Masstab 1:200 000



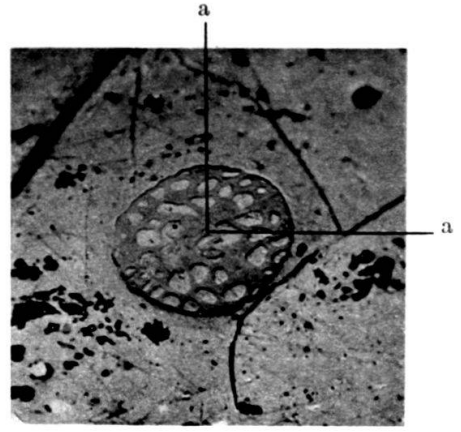
- |             |   |                                       |
|-------------|---|---------------------------------------|
| Tortonien   | Helvetische u. ultrahelvetische Alpengesteine | Schwache Mulden des Mittellandes      |
| Helvétien   | Romanische Alpengesteine                      | Starke Gewölbe der subalpinen Molasse |
| Burdigalien | x Marine Fossilien                            | Starke Mulden " " "                   |
| Aquitanien  | o Terrestrische Fossilien i A                 | Anschiebung                           |
| Châtien     | ⊙ Sauger                                      | Aufschiebung                          |
| Rupélien    | Schwache Gewölbe des Mittellandes             |                                       |



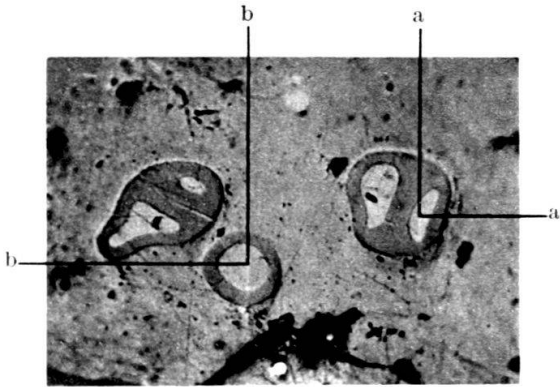




7



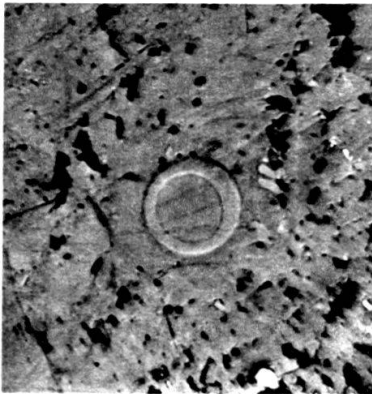
8



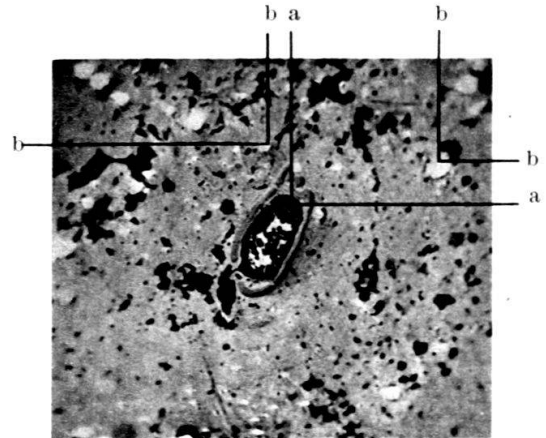
9



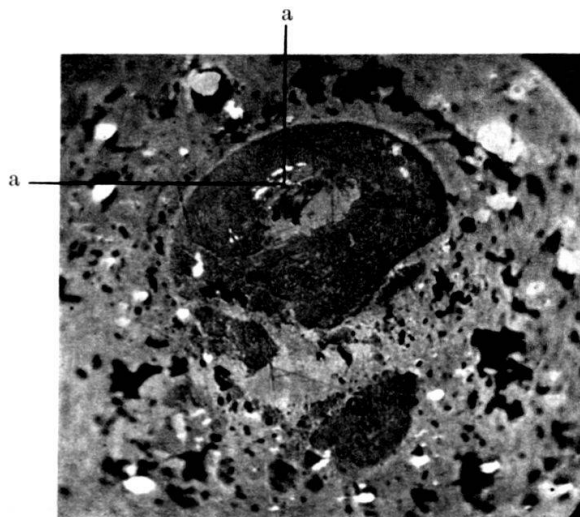
10



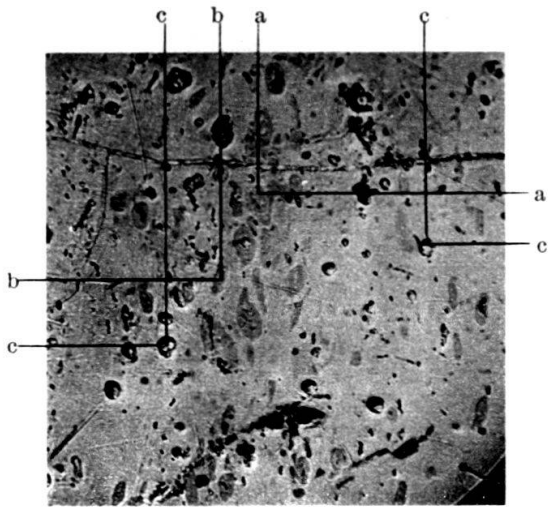
11



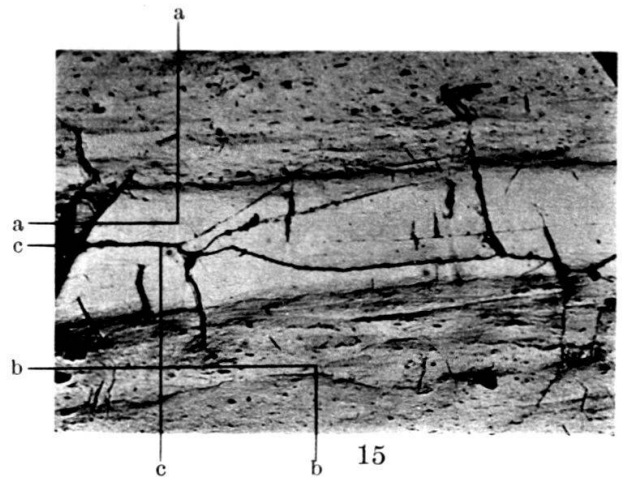
12



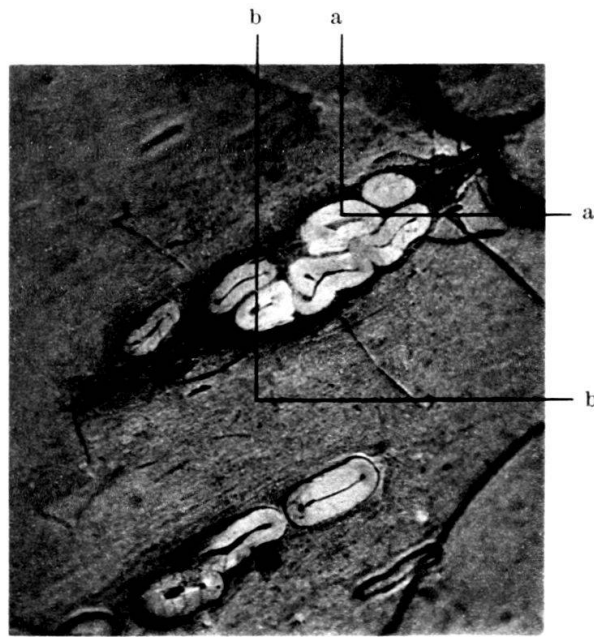
13



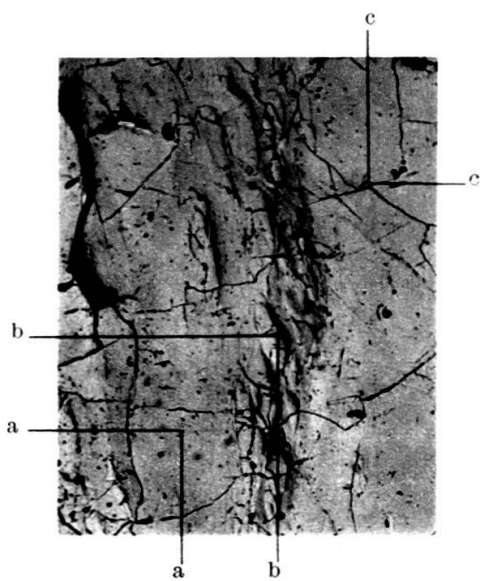
14



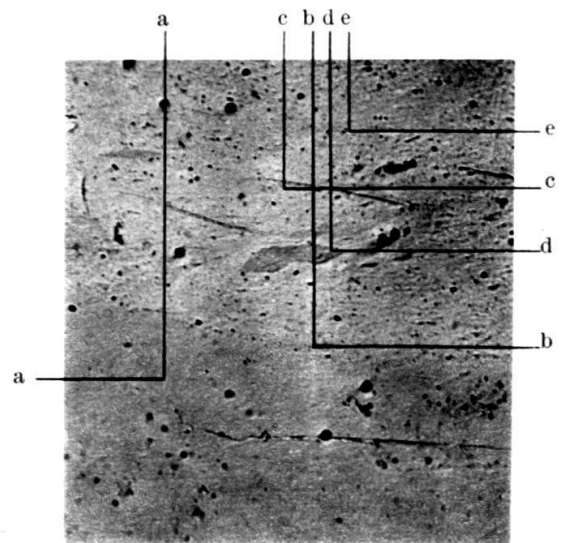
15



16



17



18

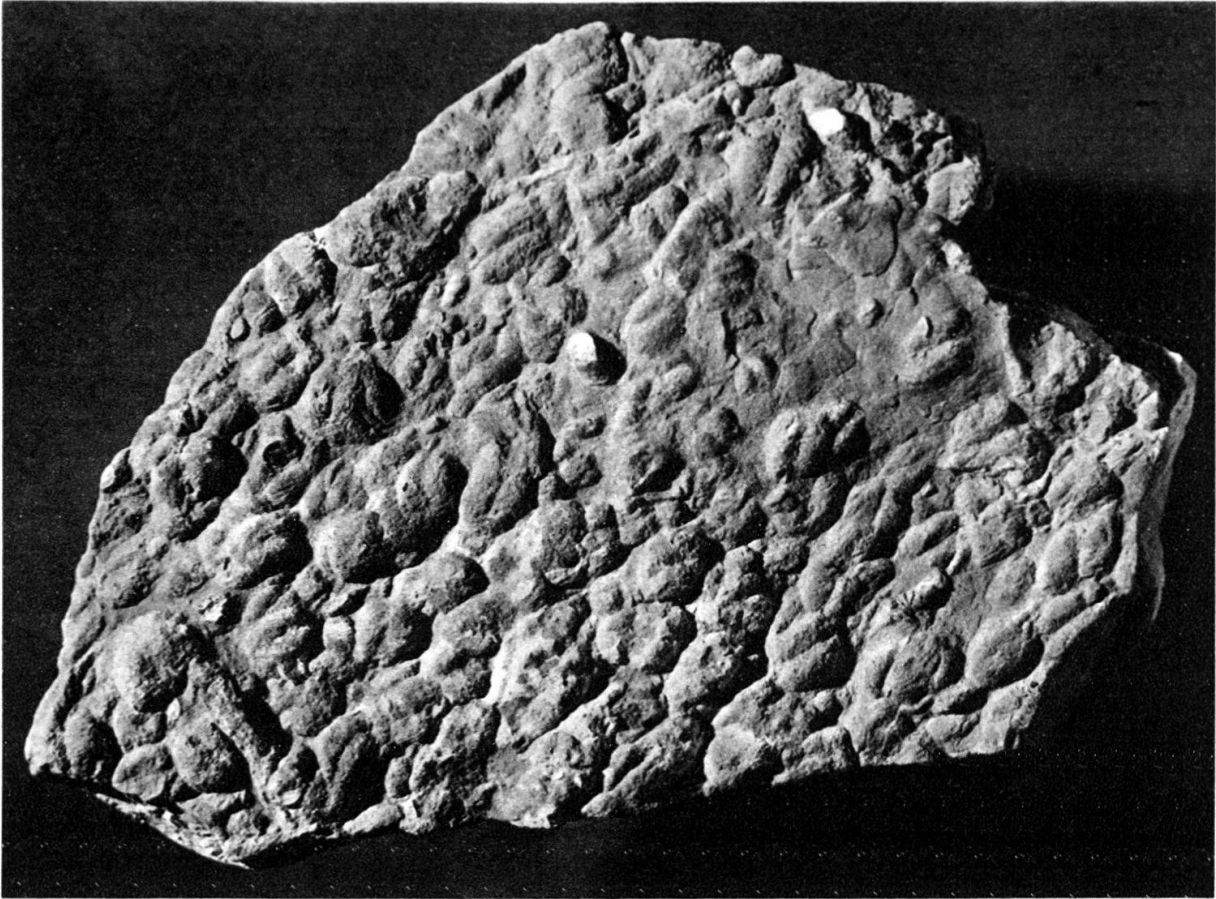


Fig. 1.

*M*  
↓

*S*  
↓

*B*  
↓



↑  
*N*

↑  
*G*

Fig. 2.

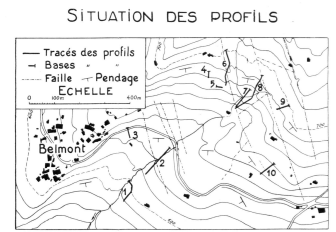
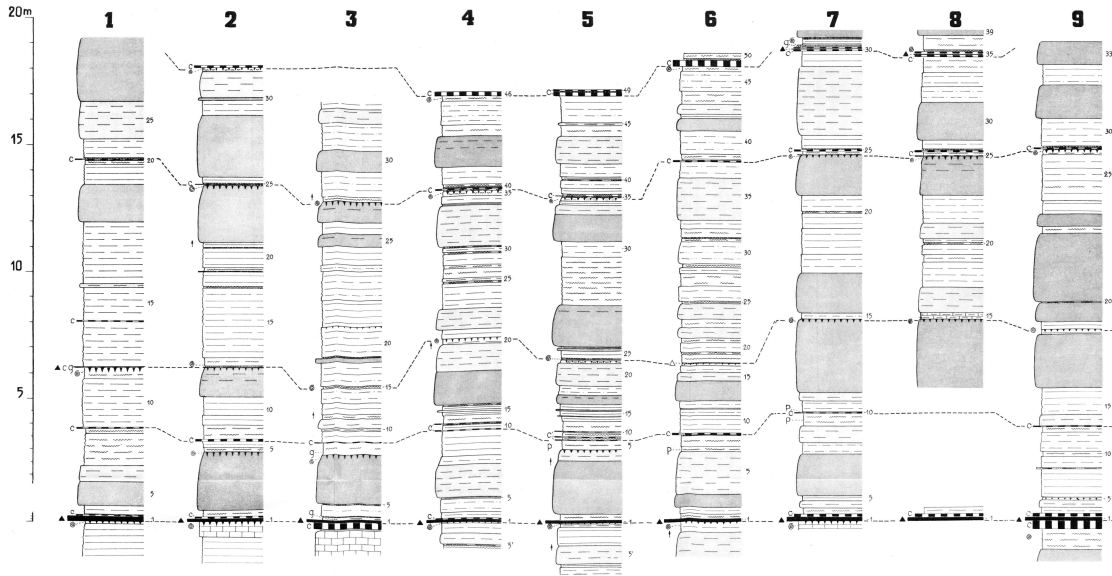
Reprod. Birkhäuser, Basel.



### Profils de la Molasse à charbon (Chattien) à Belmont s/ Lausanne

Les n° des couches sont indépendants d'un profil à l'autre

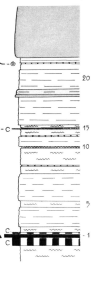
Echelle 1:50

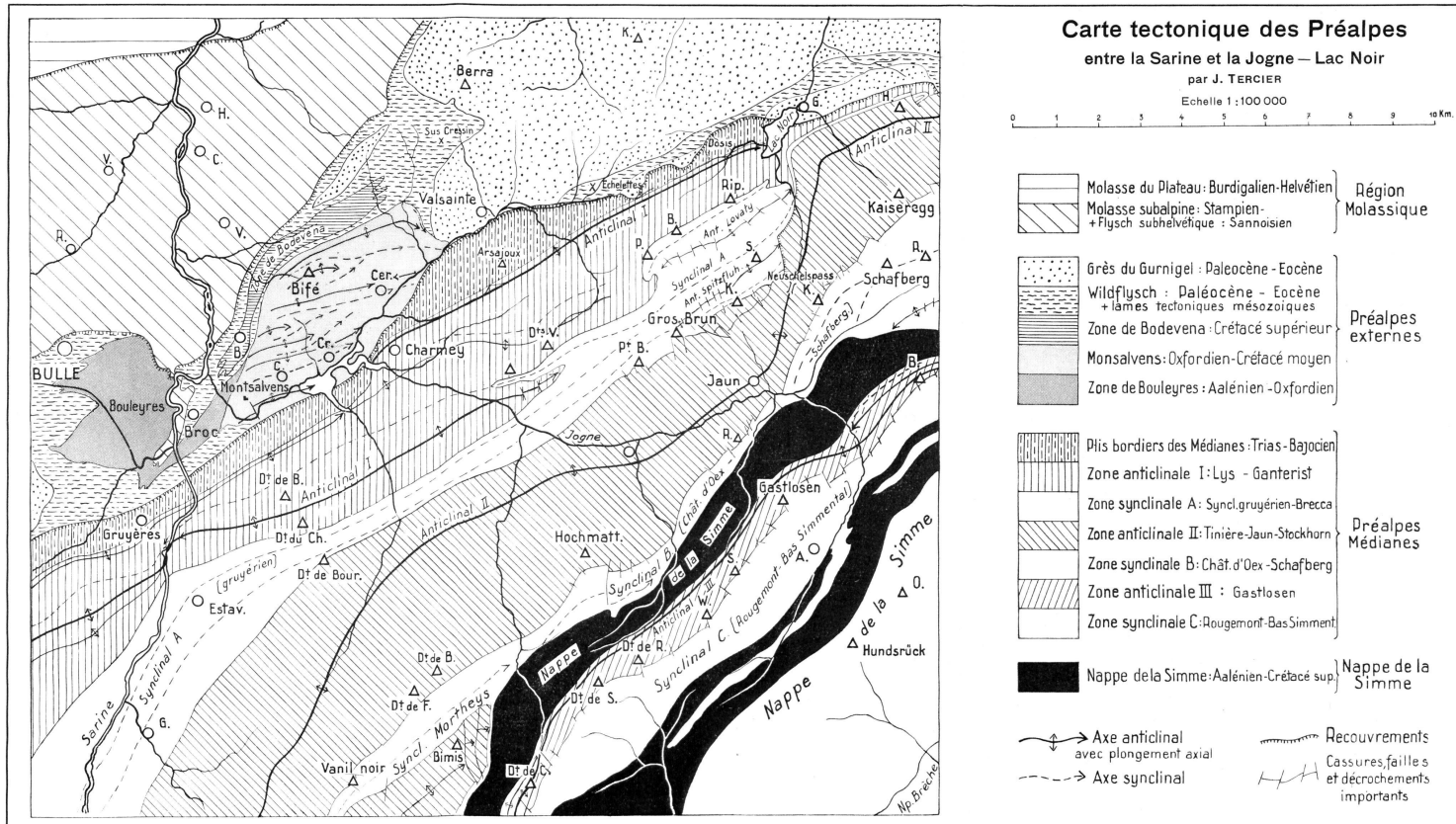


### LÉGENDE

- 1 passage progressif typique
- pg niveau pyriteux, gypseux
- pyriteux, gypseux
- palustre typique, bourdre et coquillier vers le haut
- coquillier
- carbonneux
- charbon
- calcaire déau douce
- marno-calcaire
- argile plastique
- marne tendre
- mi-dure
- dure
- maciieuse
- macigno (gres argilo-calc.)
- molasse (gres calcaire)

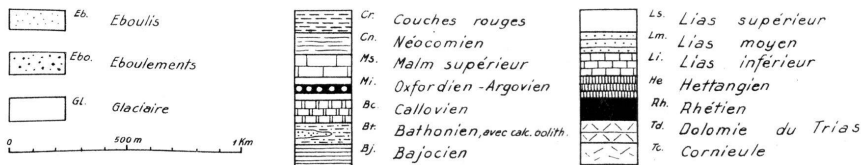
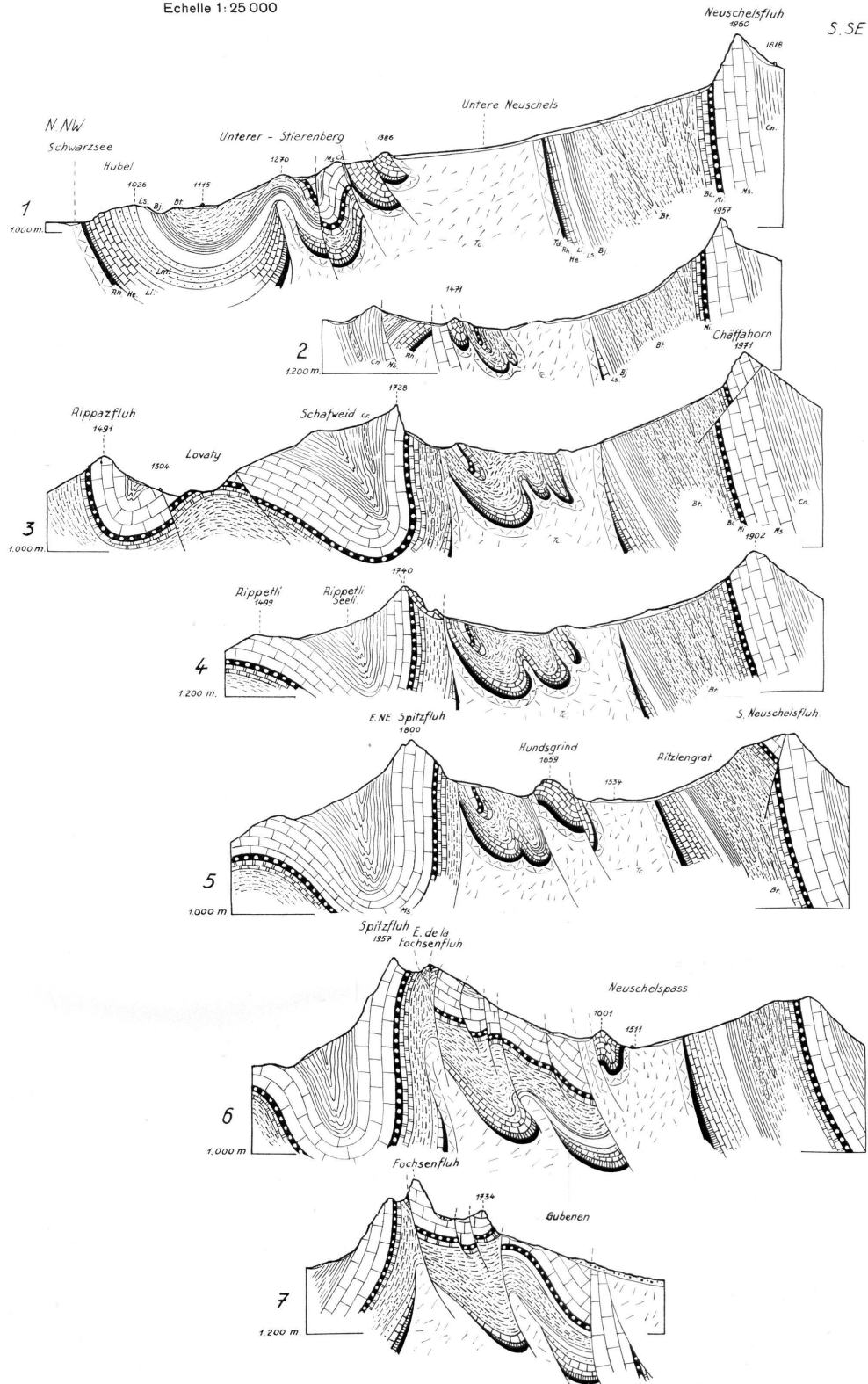
10





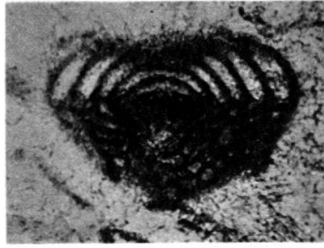
# « Profils de la région entre le Lac Noir et le Neuschelspass »

par J. TERCIER  
Echelle 1:25 000

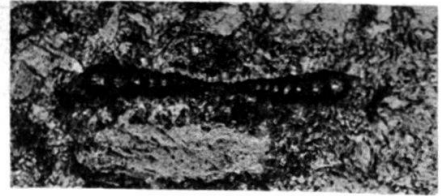




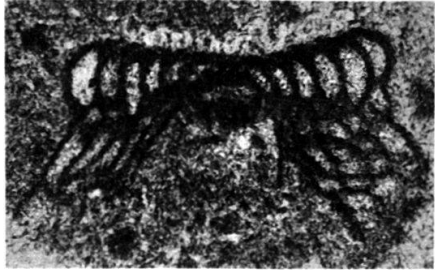
1



2



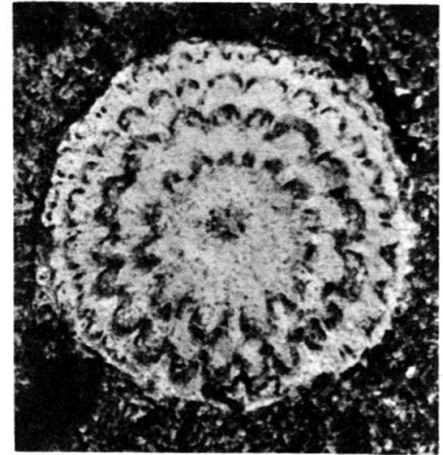
3



4



5



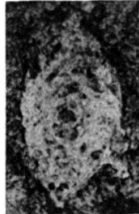
13



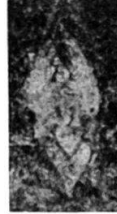
6



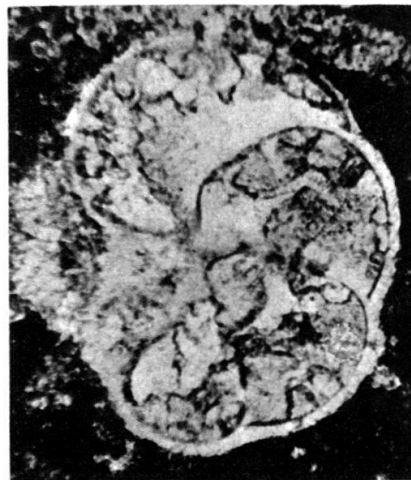
7



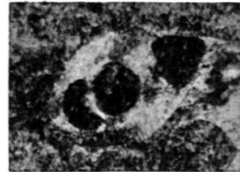
8



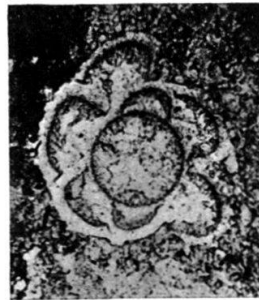
9



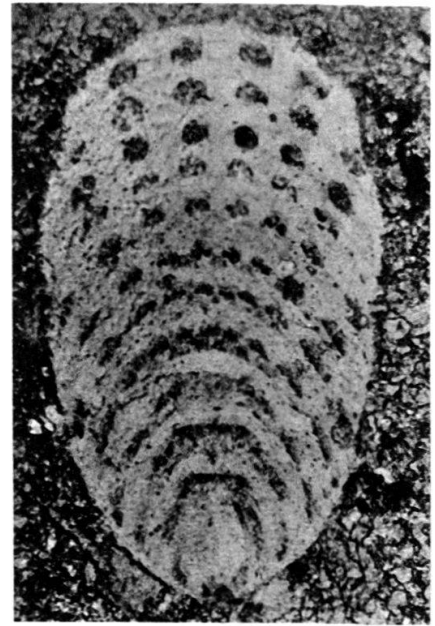
11



10



12



14



15

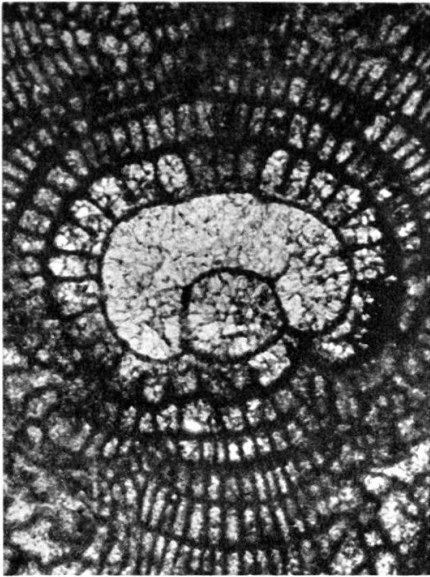


16

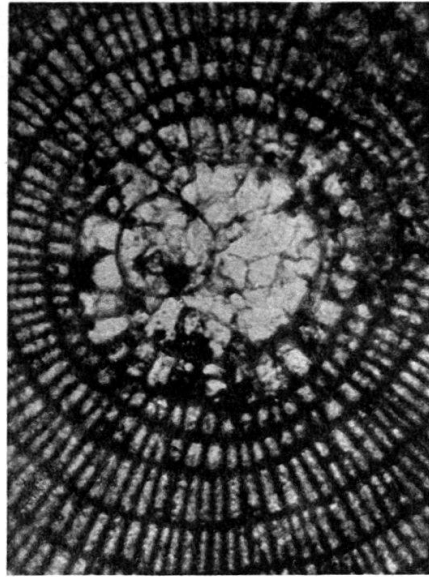


17

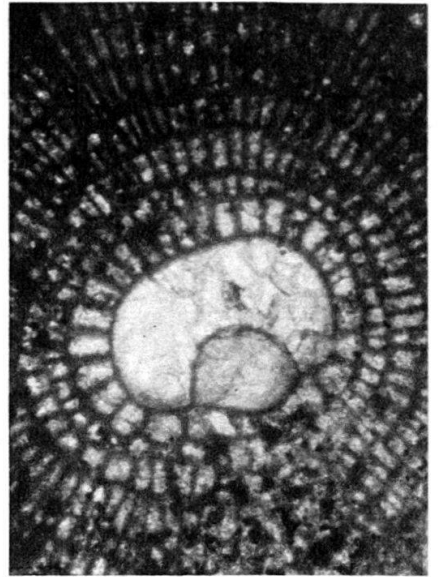




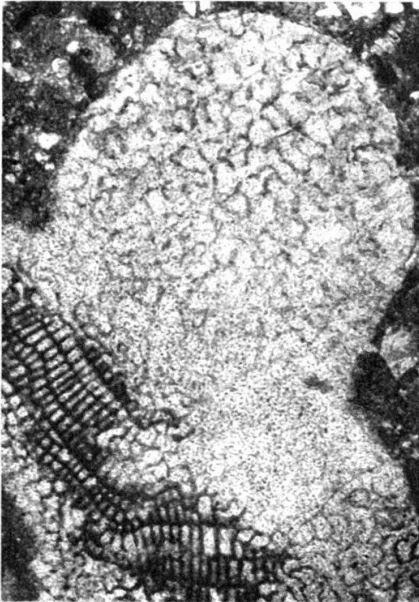
1



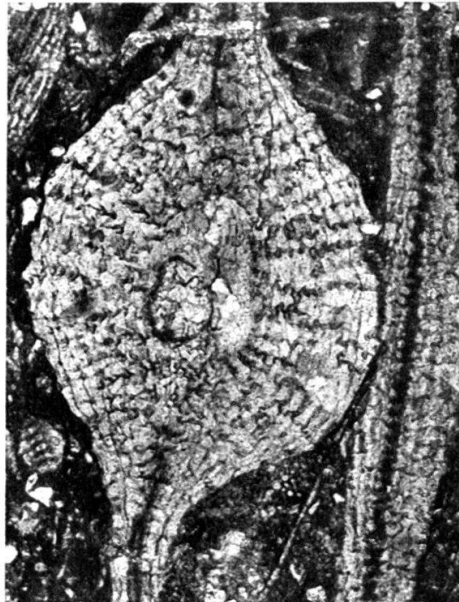
2



3



4



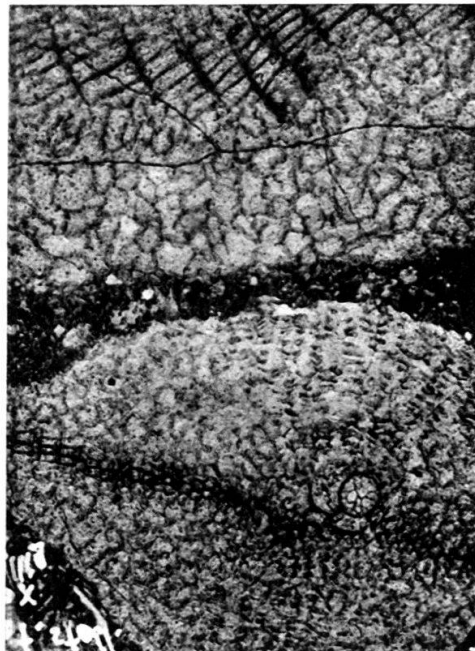
5



6



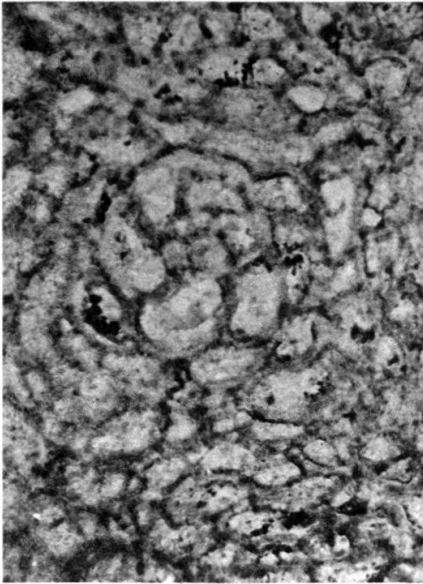
7



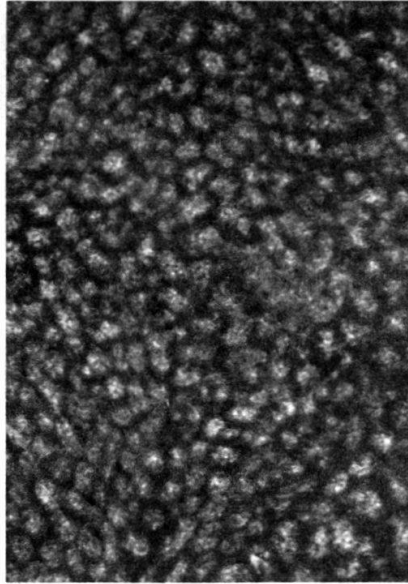
8



9



1



2



3



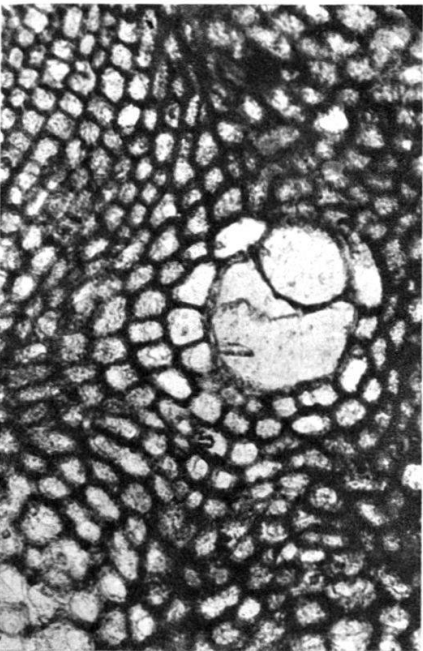
4



5



6



7

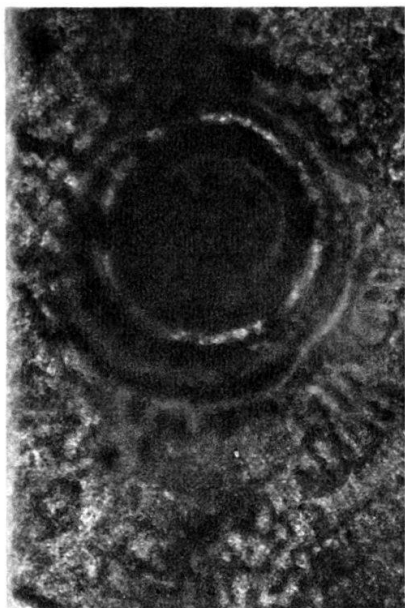


8

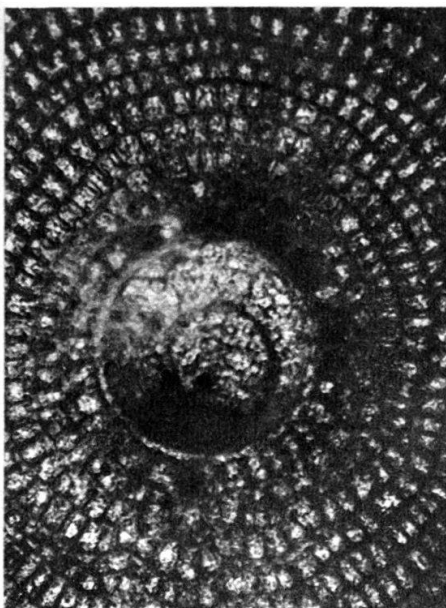


9

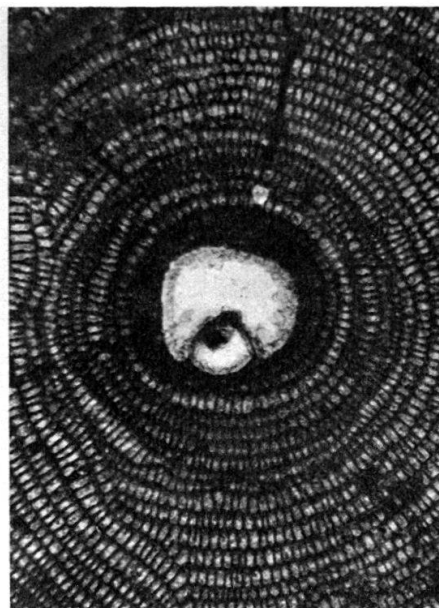




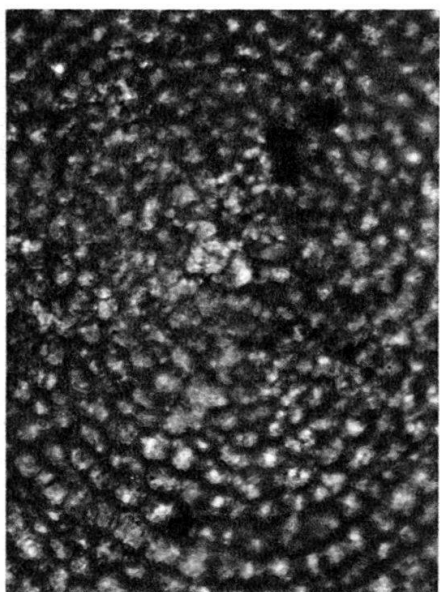
1



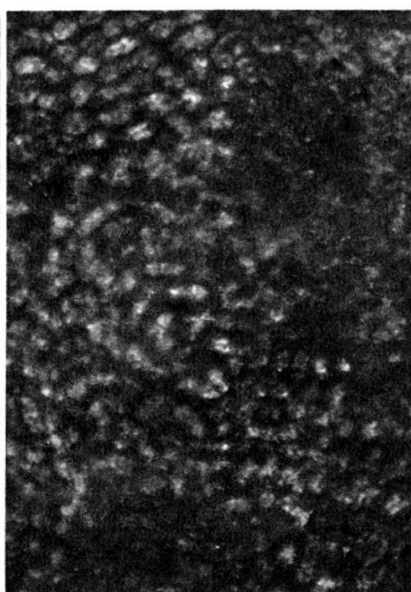
2



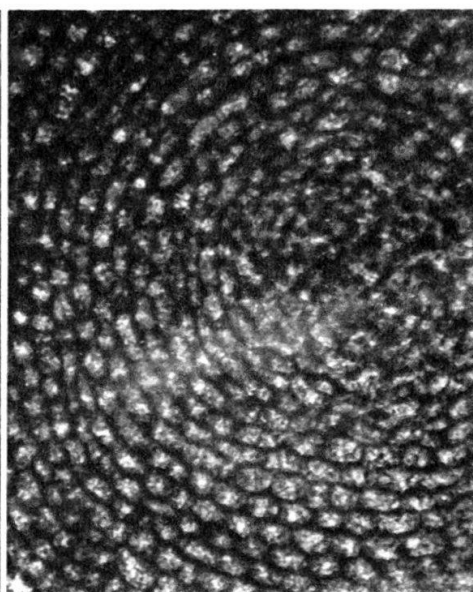
3



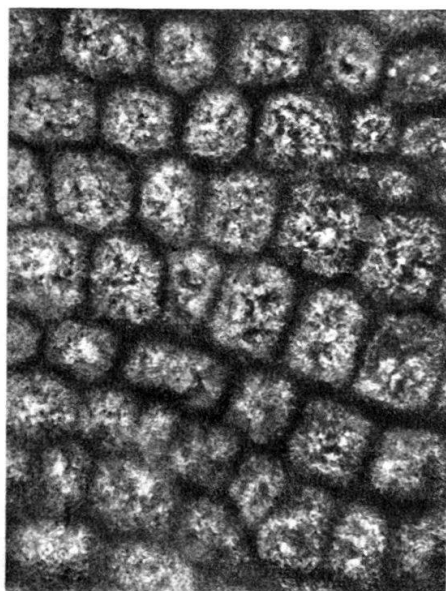
4



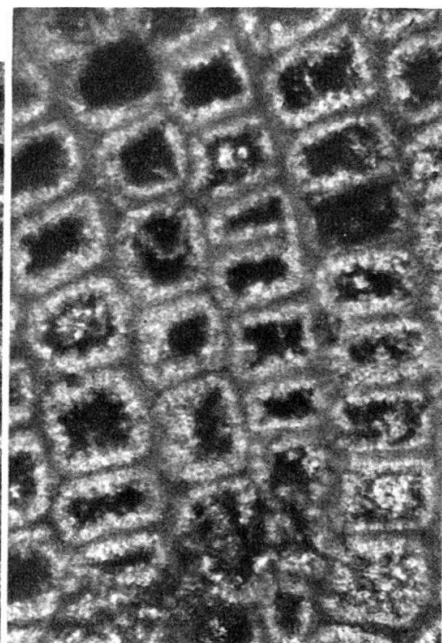
5



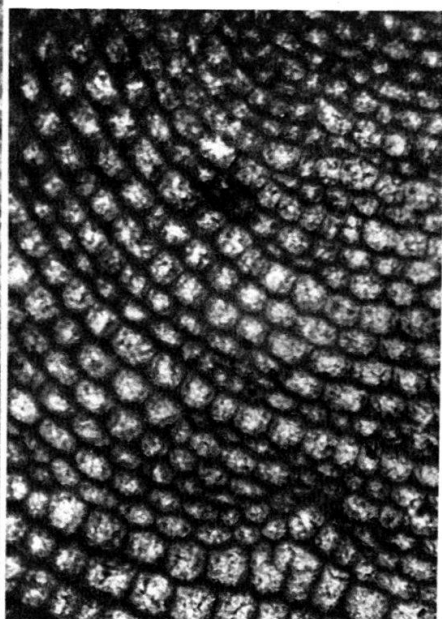
6



7



8



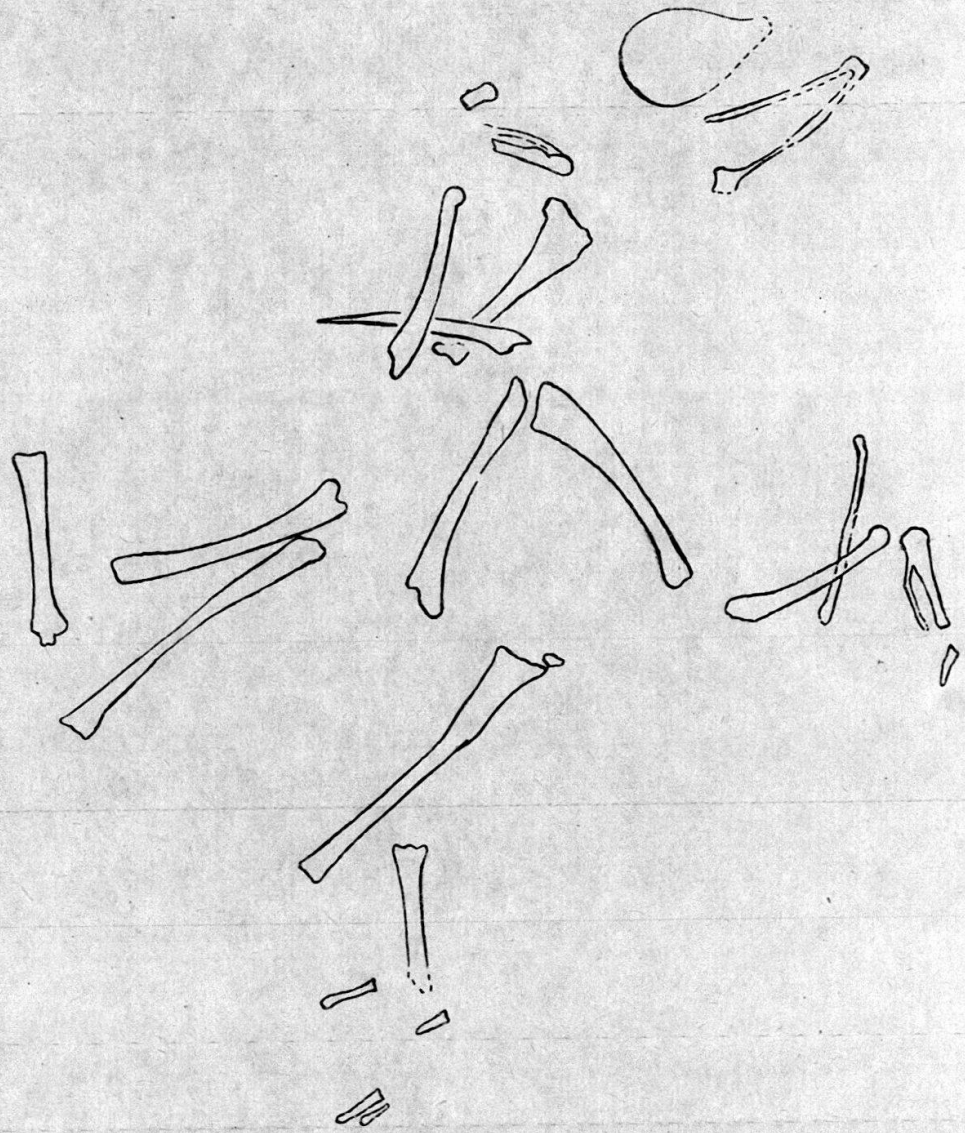
9



*Taoperdix keltica* EASTMAN.

Typusskelett von Armissan (Aude), Gegenplatte. Museum Basel, T. F. 104.  
Die 270 mm hohe und oben 220 mm breite Gegenplatte ist auf ca.  $\frac{3}{5}$  verkleinert. Auf der Platte  
sind in entsprechender Grösse die wichtigsten Knochen der Platte (Collection Bayet, Carnegie  
Museum, Pittsburgh) nach Tafel XIII bei EASTMAN, 1905 gezeichnet.







*Taoperdix keltica* EASTMAN.

Typus skelett von Armissan (Aude), Gegenplatte. Museum Basel, T. F. 104.

Die 270 mm hohe und oben 220 mm breite Gegenplatte ist auf ca.  $\frac{3}{5}$  verkleinert. Auf der Platte sind in entsprechender Grösse die wichtigsten Knochen der Platte (Collection Bayet, Carnegie Museum, Pittsburgh) nach Tafel XIII bei EASTMAN, 1905 gezeichnet.