

Plates

Autor(en): **[s.n.]**

Objektyp: **Appendix**

Zeitschrift: **Eclogae Geologicae Helvetiae**

Band (Jahr): **72 (1979)**

Heft 1

PDF erstellt am: **21.07.2024**

Nutzungsbedingungen

Die ETH-Bibliothek ist Anbieterin der digitalisierten Zeitschriften. Sie besitzt keine Urheberrechte an den Inhalten der Zeitschriften. Die Rechte liegen in der Regel bei den Herausgebern.

Die auf der Plattform e-periodica veröffentlichten Dokumente stehen für nicht-kommerzielle Zwecke in Lehre und Forschung sowie für die private Nutzung frei zur Verfügung. Einzelne Dateien oder Ausdrucke aus diesem Angebot können zusammen mit diesen Nutzungsbedingungen und den korrekten Herkunftsbezeichnungen weitergegeben werden.

Das Veröffentlichen von Bildern in Print- und Online-Publikationen ist nur mit vorheriger Genehmigung der Rechteinhaber erlaubt. Die systematische Speicherung von Teilen des elektronischen Angebots auf anderen Servern bedarf ebenfalls des schriftlichen Einverständnisses der Rechteinhaber.

Haftungsausschluss

Alle Angaben erfolgen ohne Gewähr für Vollständigkeit oder Richtigkeit. Es wird keine Haftung übernommen für Schäden durch die Verwendung von Informationen aus diesem Online-Angebot oder durch das Fehlen von Informationen. Dies gilt auch für Inhalte Dritter, die über dieses Angebot zugänglich sind.

Plate 1

- Fig. 1-4 *Anfractus harrisonii* sp. n.
1: Holotype, distal view. Upper Oxford Clay, Gamlingay Borehole at 70 feet (21.34 m). SAC 200. SEM 72/3639, $\times 32,000$.
2: Distal view. Upper Oxford Clay, Gamlingay Borehole at 64 feet (19.51 m). SAC 197. SEM 72/3697, $\times 24,000$.
3: Proximal view. Upper Oxford Clay, Gamlingay Borehole at 70 feet (21.34 m). SAC 200. SEM 72/3647, $\times 30,000$.
4: Distal view. Upper Oxford Clay, Haddenham Borehole at 230 feet (70.10 m). SAC 107. SEM 72/3828, $\times 9,000$.
- Fig. 5 *Staurorhabdus quadriarcullus* (NOËL 1965)
Proximal view. Lower Kimmeridge Clay, Haddenham Borehole at 80 feet (24.38 m). SAC 22. SEM 72/3552, $\times 24,500$.
- Fig. 6 *Anfractus variabilis* sp. n.
Holotype, distal view. Middle Oxford Clay, Gamlingay Borehole at 140 feet (42.68 m). SAC 238. SEM 73/4949, $\times 30,000$.
- Fig. 7, 8 *Crepidolithus crassus* (DEFLANDRE 1954)
7: Proximal view. Upper Oxford Clay, Gamlingay Borehole at 70 feet (21.34 m). SAC 200. SEM 72/3650, $\times 24,500$.
8: Distal view. Upper Oxford Clay, Gamlingay Borehole at 70 feet (21.34 m). SAC 200. SEM 72/3618, $\times 10,000$.
- Fig. 9 *Discorhabdus tubus* NOËL 1965
Lateral view. Upper Oxford Clay, Gamlingay Borehole at 90 feet (27.44 m). SAC 210. SEM 72/3467, $\times 16,500$.
- Fig. 10 *Parhabdolithus marthae* DEFLANDRE 1954
Lateral view. Upper Oxford Clay, Gamlingay Borehole at 63 feet (19.21 m). SAC 196. SEM 71/1711 (pol), $\times 22,000$.
- Fig. 11, 12 *Carinolithus clavatus* (DEFLANDRE 1954)
11: Lateral view. Upper Oxford Clay, Gamlingay Borehole at 68 feet (20.73 m). SAC 199. SEM 72/3681, $\times 8,500$.
12: Oblique lateral view. Upper Lias (Toarcian) *levesquei* Zone, *moorei* Subzone, Dorset. [NGRSY 489945]. SAC 3023. SEM 76/12611, $\times 8,000$.

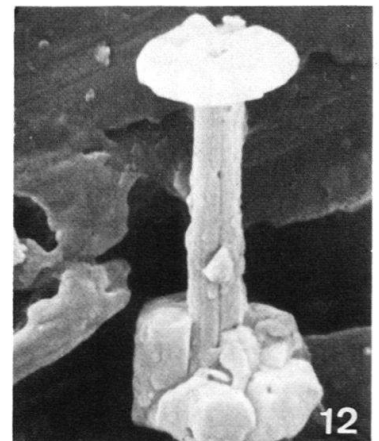
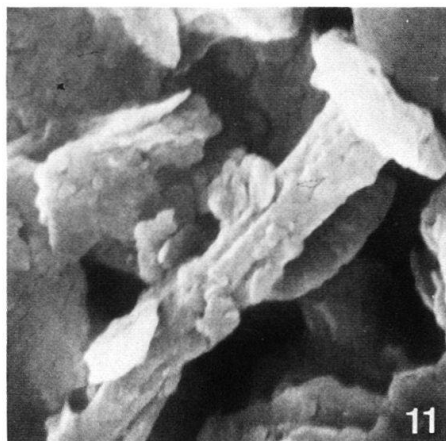
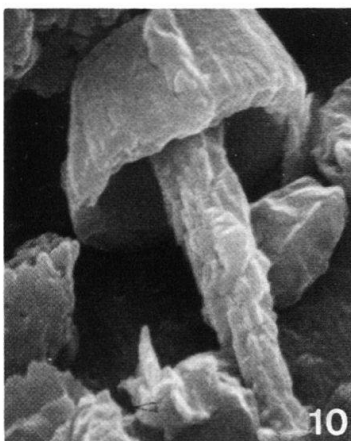
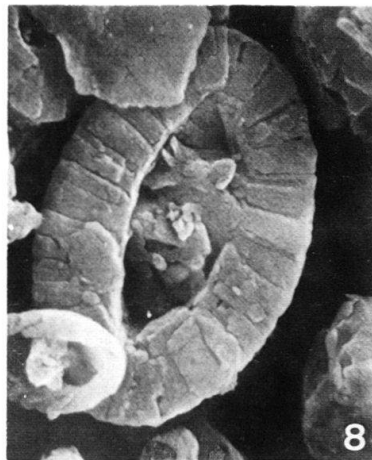
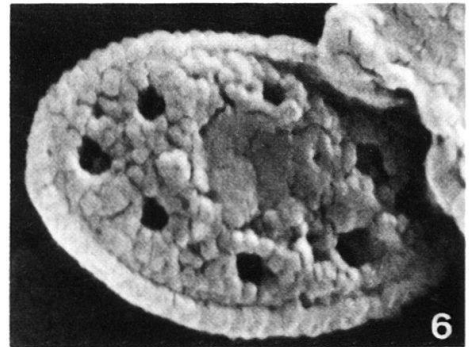
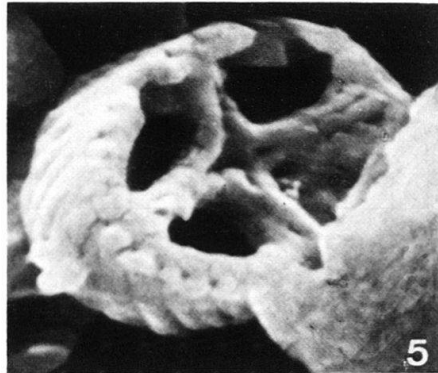
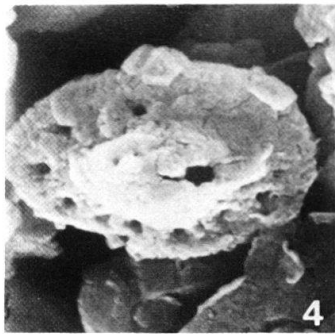
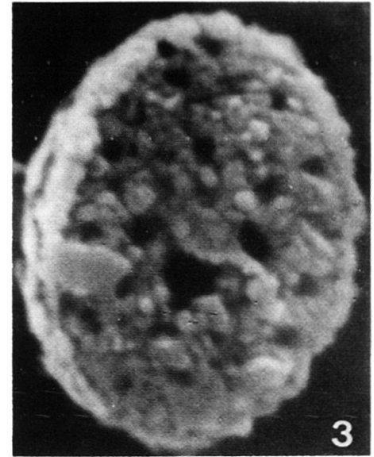
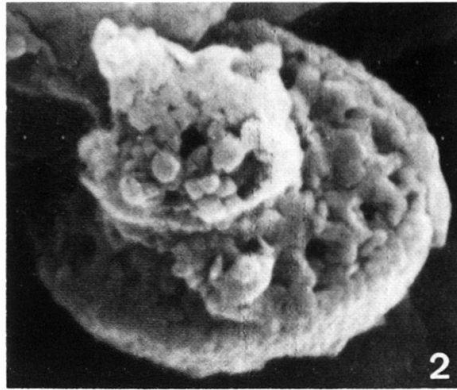
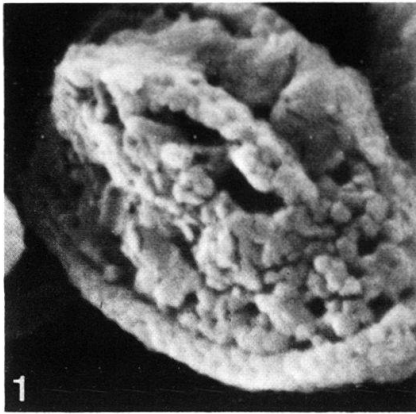


Plate 2

- Fig. 1 *Carinolithus superbus* (DEFLANDRE 1954)
Lateral view. Upper Lias (Toarcian) *lavesquei* Zone, *moorei* Subzone, Dorset. [NGRSY 489945]. SAC 3023. SEM 76/12621, $\times 8,000$.
- Fig. 2 *Carinolithus sceptrum* (DEFLANDRE 1954)
Lateral view. Upper Oxford Clay, Gamlingay Borehole at 110 feet (33.53 m). SAC 220. SEM 75/11347, $\times 8,500$.
- Fig. 3 *Actinozygus crux* (DEFLANDRE & FERT 1952)
Distal view. Lower Kimmeridge Clay, Haddenham Borehole at 50 feet (15.24 m). SAC 7. SEM 72/3606, $\times 16,500$.
- Fig. 4 *Staurorhabdus quadriarcullus* (NOËL 1965)
Distal view. Upper Oxford Clay, Gamlingay Borehole at 70 feet (21.34 m). SAC 200. SEM 72/3630, $\times 25,500$.
- Fig. 5, 6 *Neococcolithes dubius* (DEFLANDRE 1952)
5: Proximal view. Middle Oxford Clay, Gamlingay Borehole at 140 feet (42.68 m). SAC 238. SEM 73/4946, $\times 16,500$.
6: Proximal view. Upper Oxford Clay, Gamlingay Borehole at 62 feet 8 inches (19.10 m). SAC 195. SEM 72/3684, $\times 22,500$.
- Fig. 7, 8 *Zeugrhabdotus erectus* (DEFLANDRE 1954)
7: (The upper specimen) distal view, with the central opening half of the width. Upper Oxford Clay, Dorset; sample number 219G (MEDD 1971, p. 837). EM 1644, $\times 27,000$.
8: (The right hand specimen) distal view, with the central opening one third of the width. Locality and horizon as for Figure 7. EM 1650, $\times 36,000$.
- Fig. 7, 8 *Zeugrhabdotus bussoni* (NOËL 1956)
7: (The lower specimen) distal view. See above for further details.
8: (The left hand specimen) distal view. See above for further details.

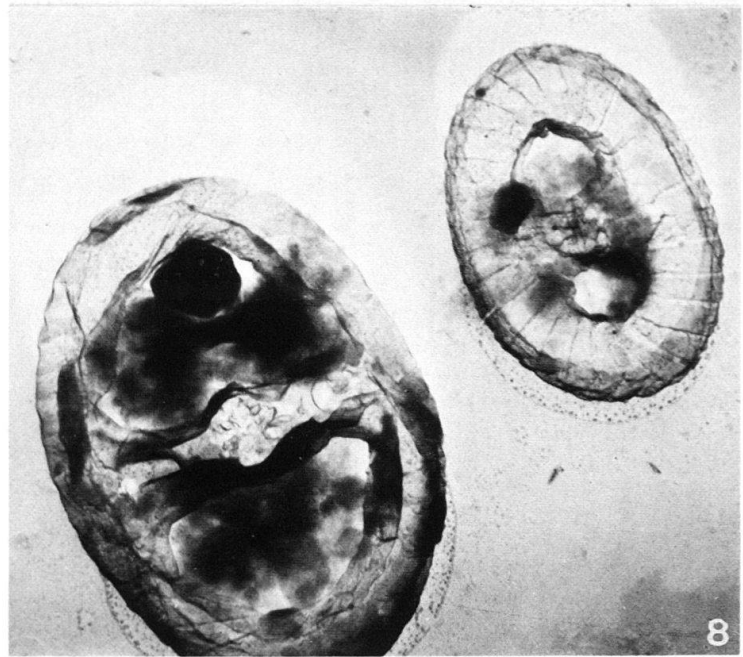
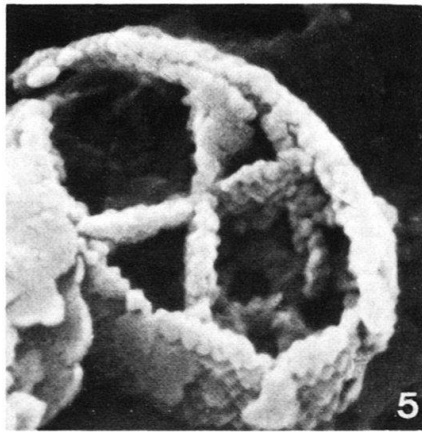
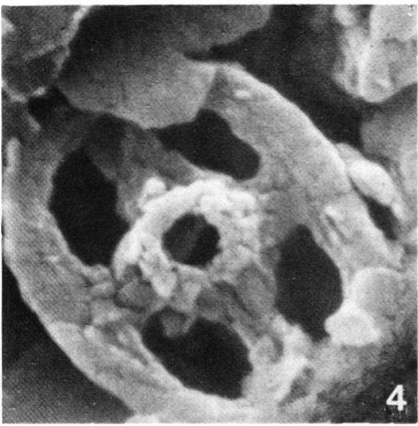
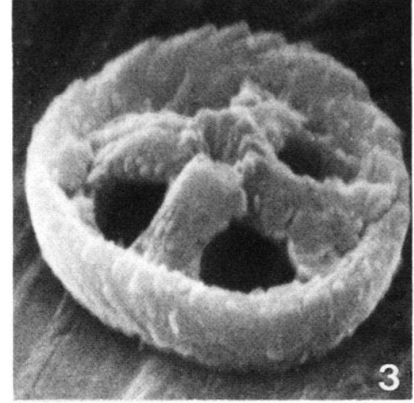
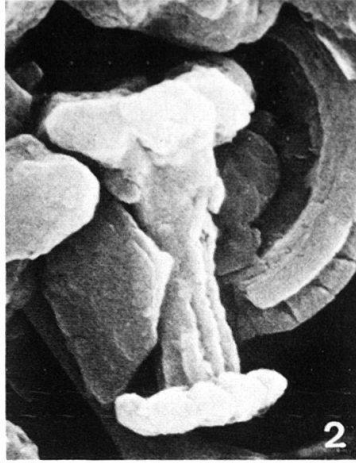
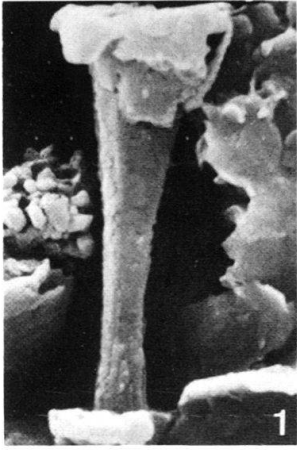


Plate 3

- Fig. 1-3 *Actinozygus geometricus* (GORKA 1957)
1: Unreplicated transmission electron micrograph. Lower Kimmeridge Clay, Ely, Cambridgeshire; sample number 40M (MEDD 1971, p. 832). EM 365, $\times 24,000$.
2: Proximal view. Upper Oxford Clay, Gamlingay Borehole at 70 feet (21.34 m). SAC 200. SEM 72/3635, $\times 32,000$.
3: Distal view. Lower Kimmeridge Clay, Haddenham Borehole at 80 feet (24.39 m). SAC 22. SEM 72/3554, $\times 24,000$.
- Fig. 4 *Stradnerlithus bifurcatus* NOËL 1973
Distal view. Lower Ampthill Clay, Ampthill Borehole at 80 feet (24.38 m). SAB 879. SEM 74/8779, $\times 30,000$.
- Fig. 5 *Stradnerlithus asymmetricus* (ROOD, HAY & BARNARD 1971)
Proximal view. Upper Oxford Clay, Gamlingay Borehole at 68 feet (20.73 m). SAC 199. SEM 72/3668, $\times 26,000$.
- Fig. 6 *Actinozygus fragilis* ROOD & BARNARD 1972
Proximal view. Upper Oxford Clay, Gamlingay Borehole at 68 feet (20.73 m). SAC 199. SEM 76/12392, $\times 16,500$.
- Fig. 7, 8 *Stradnerlithus comptus* BLACK 1971
7: Distal view. Upper Oxford Clay, Gamlingay Borehole at 90 feet (27.44 m). SAC 210. SEM 72/3466, $\times 16,500$.
8: Proximal view. Upper Oxford Clay, Gamlingay Borehole at 68 feet (20.73 m). SAC 199. SEM 72/3676, $\times 12,750$.
- Fig. 9 *Stradnerlithus pauciramosus* BLACK 1973
Distal view. Upper Oxford Clay, Haddenham Borehole at 230 feet (70.12 m). SAC 107. SEM 72/3704, $\times 22,500$.
- Fig. 10 *Stradnerlithus rhombicus* (STRADNER & ADAMIKER 1966)
Proximal view. Middle Oxford Clay, Millbrook section, near Ampthill, Bedfordshire. SAB 175. SEM 76/12394, $\times 17,000$.
- Fig. 11, 12 *Stradnerlithus rotatus* (ROOD, HAY & BARNARD 1971)
11: Proximal view. Upper Oxford Clay, Gamlingay Borehole at 68 feet (20.73 m). SAC 199. SEM 76/12395, $\times 17,000$.
12: Distal view. Middle Oxford Clay, Millbrook section, near Ampthill, Bedfordshire. SAB 175. SEM 76/12519, $\times 18,000$.

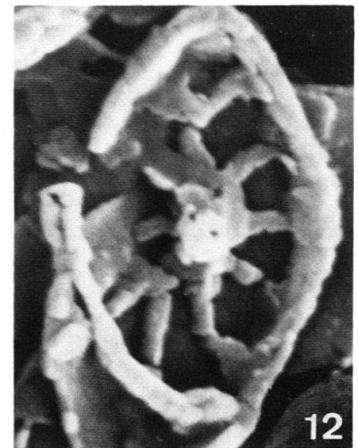
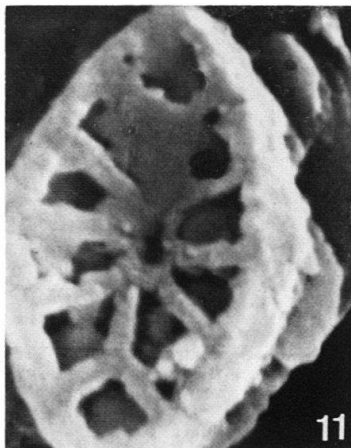
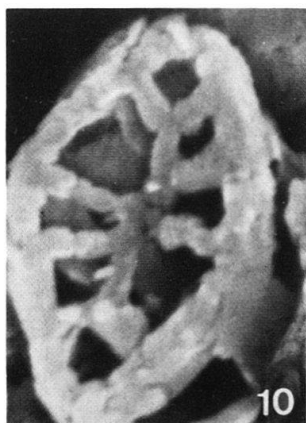
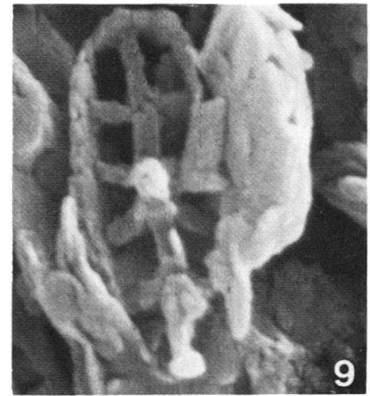
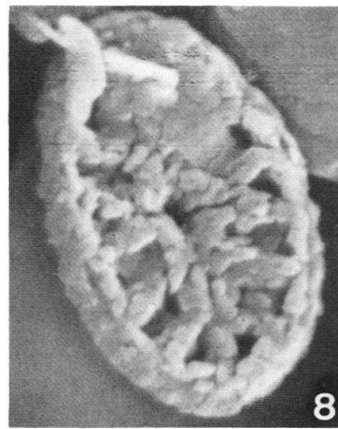
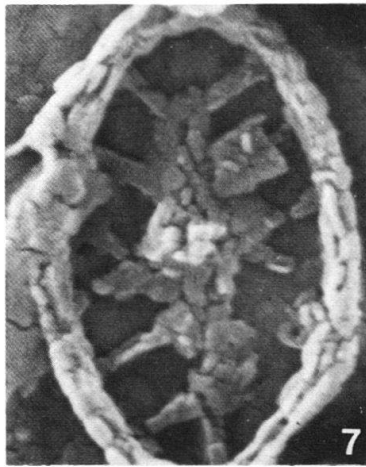
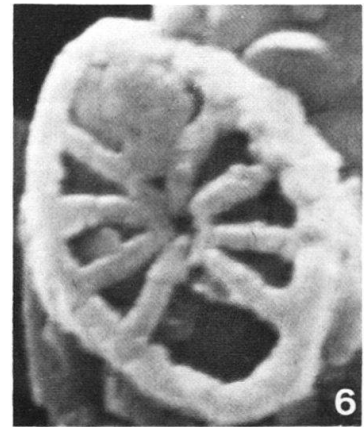
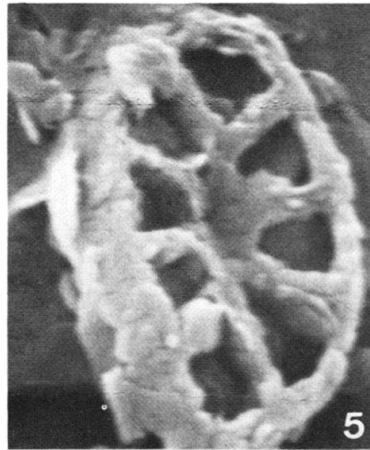
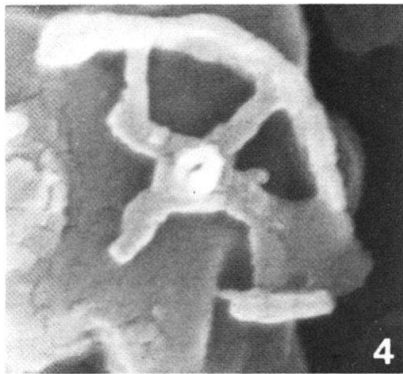
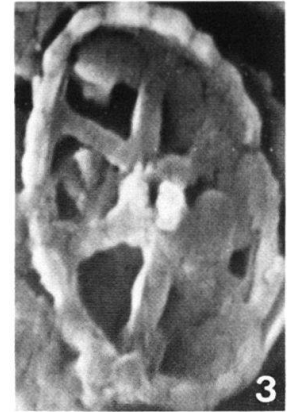
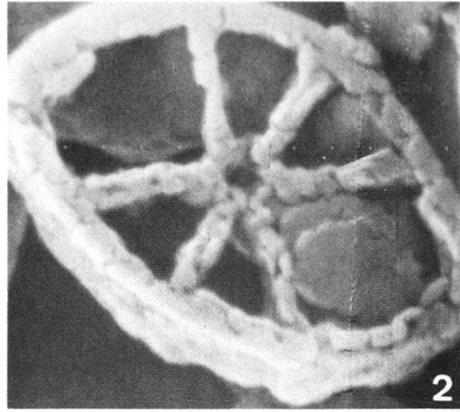
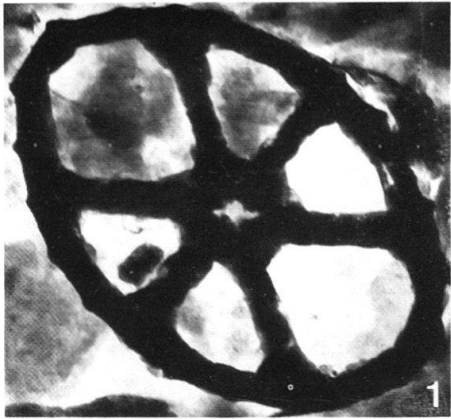


Plate 4

- Fig. 1 *Diadorhombus scutulatus* (MEDD 1971)
Distal view. Upper Oxford Clay, Gamlingay Borehole at 70 feet (21.34 m). SAC 200. SEM 72/3653, $\times 20,000$.
- Fig. 2, 3 *Stradnerlithus octoradiatus* sp. n.
2: Holotype, distal view. Lower Kimmeridge Clay, Haddenham Borehole at 80 feet (24.39 m). SAC 22. SEM 72/3570, $\times 22,000$.
3: Proximal view. Middle Oxford Clay, Gamlingay Borehole at 140 feet (42.68 m). SAC 238. SEM 72/3732, $\times 20,500$.
- Fig. 4 *Stradnerlithus sattinii* sp. n.
Holotype, optical micrograph. Lower Ampthill Clay, Ampthill Borehole at 60 feet (18.29 m). SAB 854-C1. $\times 19,000$.
- Fig. 5 *Stephanolithion bigoti* DEFLANDRE 1939 *bigoti* sp. n.
The two smaller specimens on the left hand side, illustrating both distal and proximal views. Upper Oxford Clay, Gamlingay Borehole at 64 feet (19.51 m). SAC 197. SEM 72/3694, $\times 2,250$.
- Fig. 5, 6 *Stephanolithion bigoti* DEFLANDRE 1939 *maximum* ssp. n.
5: The larger specimen on the right hand side, distal view. [See above for further details.]
6: An enlarged view of the above specimen. SEM 72/3695, $\times 7,500$.
- Fig. 7, 8, 10, 11 *Stephanolithion carinatum* sp. n.
7: Proximal view. Upper Oxford Clay, Gamlingay Borehole at 68 feet (20.73 m). SAC 199. SEM 72/3680, $\times 11,500$.
8: Holotype, distal view. Upper Oxford Clay, Gamlingay Borehole at 70 feet (21.34 m). SAC 200. SEM 72/3631, $\times 12,500$.
10: Proximal view. Upper Oxford Clay, Gamlingay Borehole at 68 feet (20.73 m). SAC 199. SEM 72/3665, $\times 16,750$.
11: Distal view. Upper Oxford Clay, Gamlingay Borehole at 68 feet (20.73 m). SAC 199. SEM 72/3659, $\times 14,500$.
- Fig. 9 *Stephanolithion speciosum* DEFLANDRE 1954 *elongatum* ssp. n.
Holotype, optical micrograph. Middle Jurassic, Upper Fullers Earth, Horsecombe Vale. Borehole No. 15 [NGR ST75556225] at 105 feet (32.00 m). SAC 1039-C1. $\times 5,000$.
- Fig. 12 *Podorhabdus grassei* NOËL 1965
Lateral view. Upper Oxford Clay, Gamlingay Borehole at 90 feet (27.44 m). SAC 210. SEM 72/3471, $\times 9,500$.
- Fig. 13 *Podorhabdus rahla* NOËL 1965
Lateral view. Upper Oxford Clay, Gamlingay Borehole at 70 feet (21.34 m). SAC 200. SEM 72/3634, $\times 10,500$.

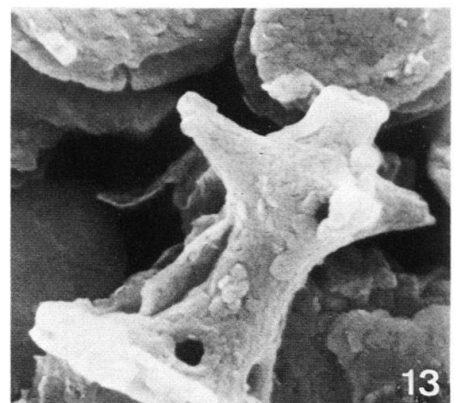
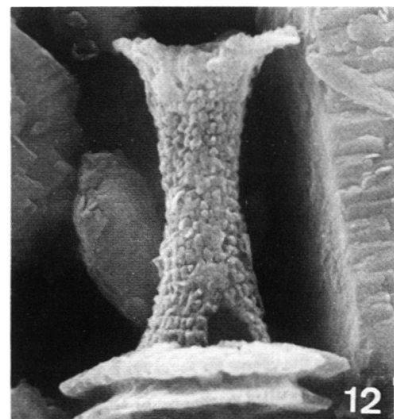
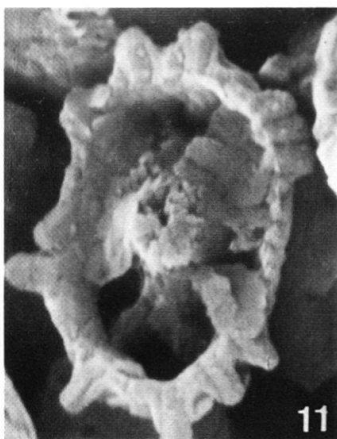
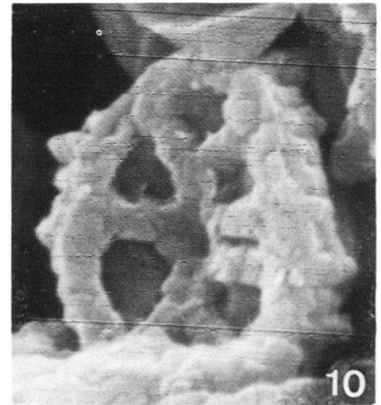
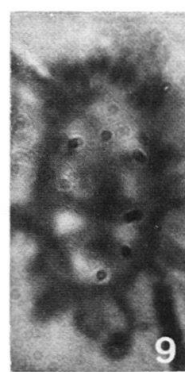
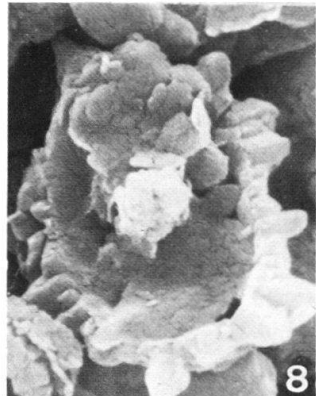
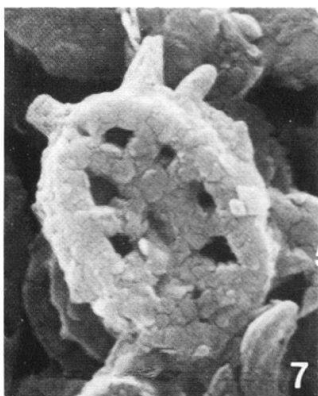
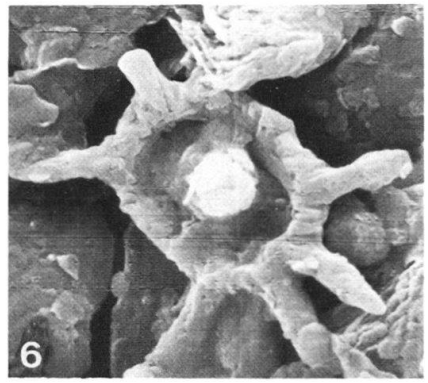
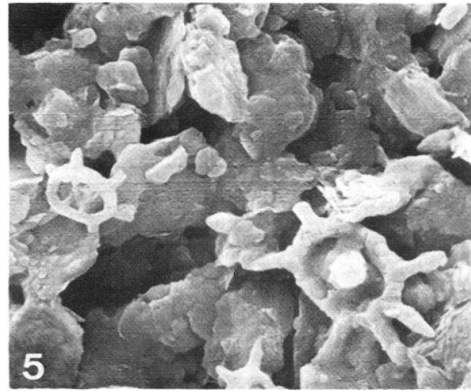
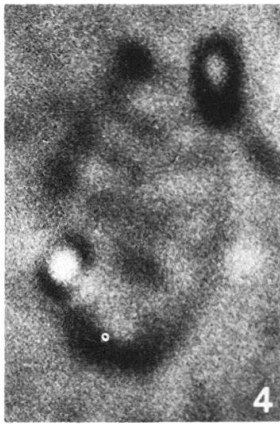
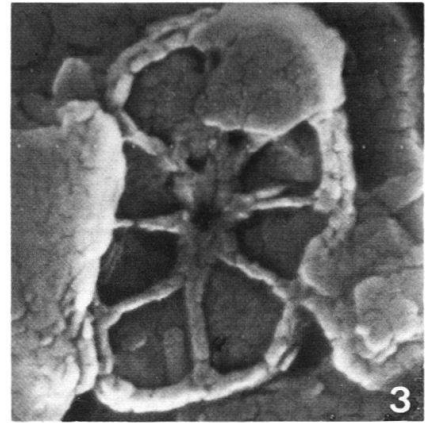
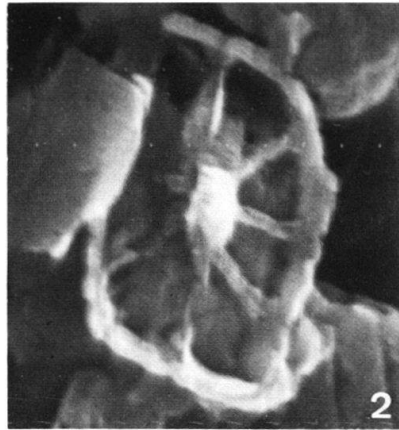


Plate 5

- Fig. 1, 2 *Podorhabdus cylindratus* NOËL 1965
1: Proximal view. Upper Oxford Clay, Gamlingay Borehole at 70 feet (21.34 m). SAC 200. SEM 72/3615, $\times 13,000$.
2: Lateral view. Lower Kimmeridge Clay, Haddenham Borehole at 80 feet (24.39 m). SAC 22. SEM 72/3560, $\times 15,000$.
- Fig. 3 *Cleistorhabdus moorei* sp. n.
Holotype, distal view. Upper Oxford Clay, Gamlingay Borehole at 68 feet (20.73 m). SAC 199. SEM 72/3701, $\times 14,500$.
- Fig. 4, 8, 9, 12 *Hemipodorhabdus conjugatus* sp. n.
4: Distal view. Upper Oxford Clay, Gamlingay Borehole at 70 feet (21.34 m). SAC 200. SEM 72/3649, $\times 15,000$.
8: Distal view. Ampthill Clay, Gamlingay Borehole at 57 feet (17.38 m). SAC 188. SEM 72/3780, $\times 17,500$.
9: Distal view. Upper Oxford Clay, Gamlingay Borehole at 68 feet (20.73 m). SAC 199. SEM 72/3671, $\times 16,000$.
12: Holotype, distal view. Upper Oxford Clay, Gamlingay Borehole at 70 feet (21.34 m). SAC 200. SEM 72/3632, $\times 13,500$.
- Fig. 5-7 *Octopodorhabdus decussatus* (MANIVIT 1959)
5: Proximal view. Upper Oxford Clay, Haddenham Borehole at 218 feet (66.46 m). SAC 98. SEM 72/3775, $\times 17,000$.
6: Proximal view. Upper Oxford Clay, Gamlingay Borehole at 70 feet (21.34 m). SAC 200. SEM 72/3633, $\times 13,500$.
7: Distal view. Middle Oxford Clay, Gamlingay Borehole at 140 feet (42.68 m). SAC 238. SEM 72/3736, $\times 12,000$.
- Fig. 10, 11 *Podorhabdus rahla* NOËL 1965
10: Lateral view. Upper Oxford Clay, Gamlingay Borehole at 90 feet (27.44 m). SAC 210. SEM 72/3459, $\times 8,500$.
11: Oblique proximal view. Upper Oxford Clay, Gamlingay Borehole at 70 feet (21.34 m). SAC 200. SEM 72/3617, $\times 8,500$.

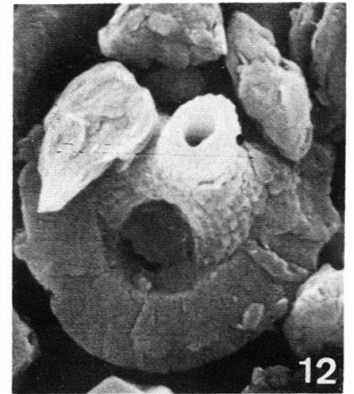
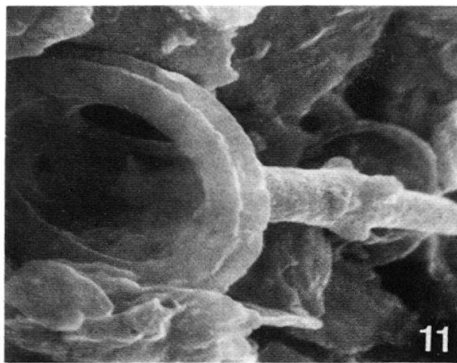
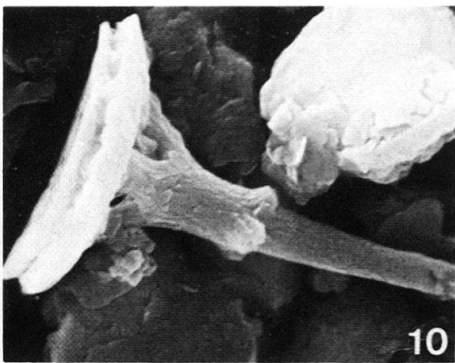
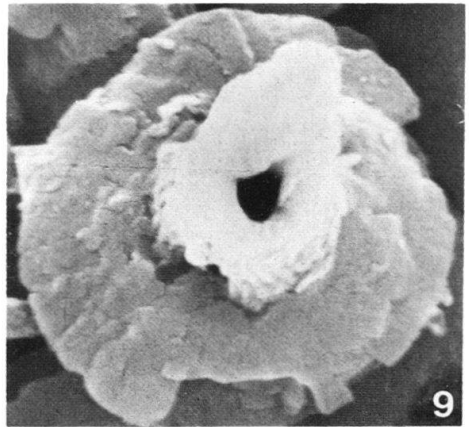
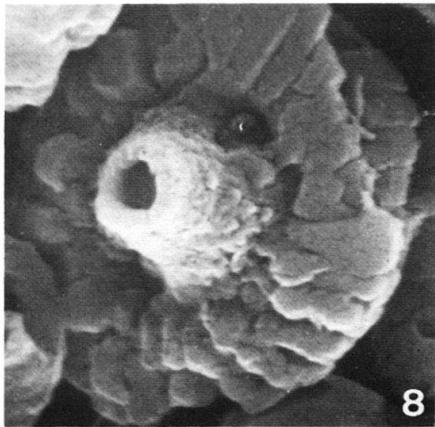
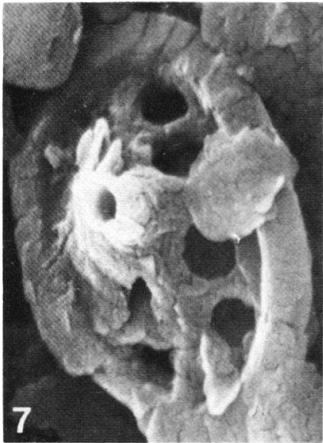
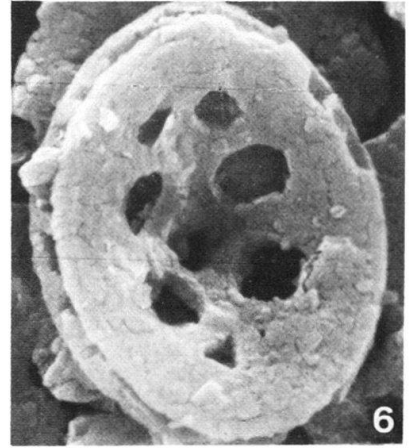
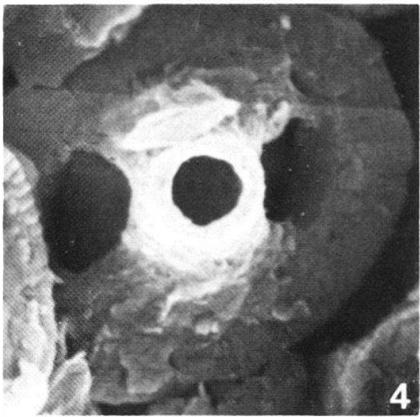
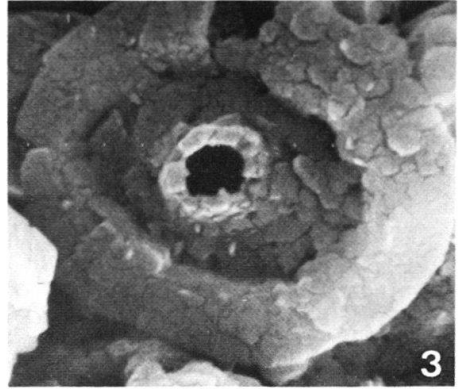
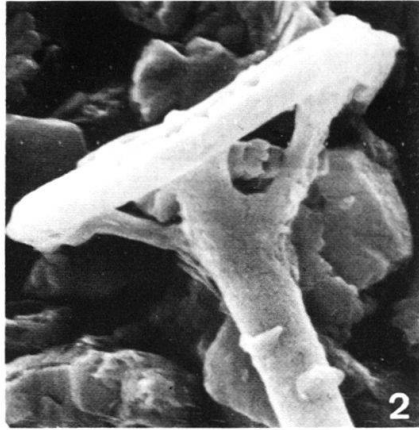
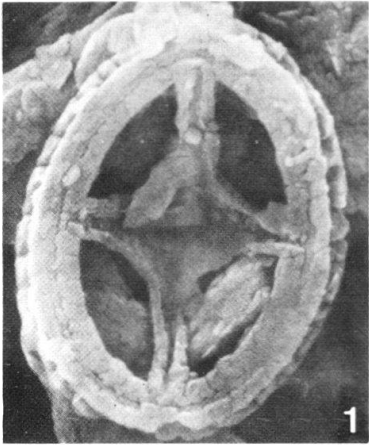


Plate 6

- Fig. 1 *Octopodorhabdus decussatus* (MANIVIT 1959)
Proximal view. Upper Oxford Clay, Gamlingay Borehole at 63 feet (19.21 m).
SAC 196. SEM 72/3824, $\times 4,000$.
- Fig. 2 *Dekapodorhabdus typicus* sp.n.
Holotype, distal view. Upper Oxford Clay, Gamlingay Borehole at 64 feet (19.51 m).
SAC 197. SEM 72/3691, $\times 17,000$.
- Fig. 3 *Polypodorhabdus escaigi* NOËL 1965
Distal view. Middle Oxford Clay, Gamlingay Borehole at 140 feet (42.68 m). SAC 238.
SEM 73/4947, $\times 16,000$.
- Fig. 4, 5 *Polypodorhabdus madingleyensis* BLACK 1968
4: Proximal view. Middle Oxford Clay, Gamlingay Borehole at 140 feet (42.68 m).
SAC 238. SEM 73/5122, $\times 18,000$.
5: Distal view. Middle Oxford Clay, Gamlingay Borehole at 140 feet (42.68 m).
SAC 238. SEM 73/5135, $\times 13,000$.
- Fig. 6 *Polypodorhabdus beckii* sp.n.
Distal view. Ampthill Clay, Ampthill Borehole at 80 feet (24.38 m). SAB 879.
SEM 74/8783, $\times 17,500$.
- Fig. 7, 8 *Ethmorhabdus gallicus* NOËL 1965
7: Distal view. Lower Kimmeridge Clay, Haddenham Borehole at 80 feet (24.39 m).
SAC 22. SEM 72/3559, $\times 11,000$.
8: Oblique distal view. Lower Kimmeridge Clay, Haddenham Borehole at 80 feet
(24.39 m). SAC 22. SEM 72/3565, $\times 8,500$.
- Fig. 9-12 *Tetrapodorhabdus shawensis* sp.n.
9: Distal view, optical micrograph. Middle Jurassic (Bathonian) Upper Fullers Earth,
Faulkland Borehole at 202 feet (61.59 m) [NGRST714539]. SAC 2951. Slide
No. MPK 1176 in the IGS slide collection, Leeds, $\times 8,000$.
10: Paratype, proximal view. Upper Oxford Clay, Gamlingay Borehole at 68 feet
(20.73 m). SAC 199. SEM 76/12396, $\times 17,000$.
11: Holotype, distal view. Middle Jurassic, Bridport Sands, Dorset. [NGRSY 484892].
SAC 2874. SEM 76/12399, $\times 17,000$.
12: Proximal view, optical micrograph. (details as for Fig. 9).

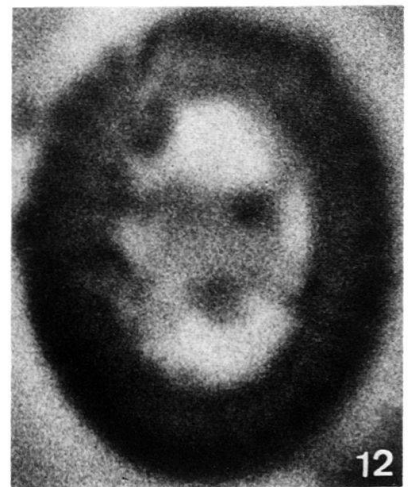
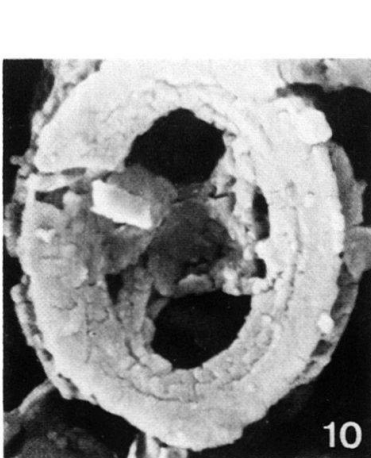
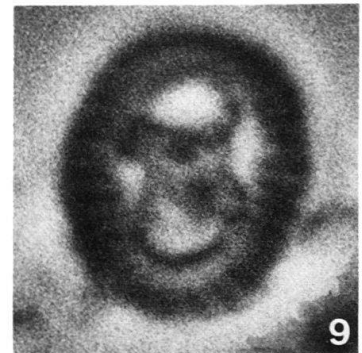
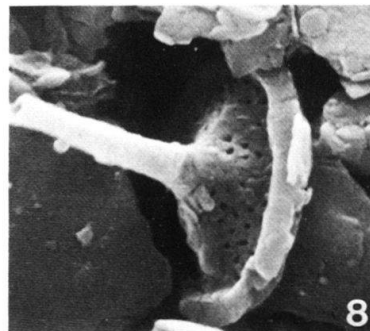
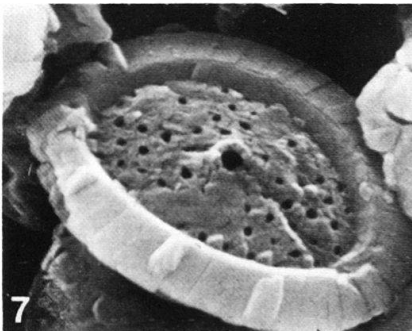
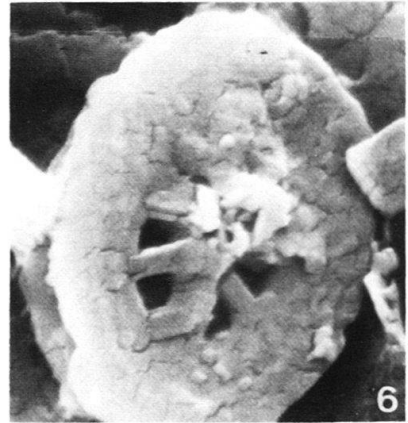
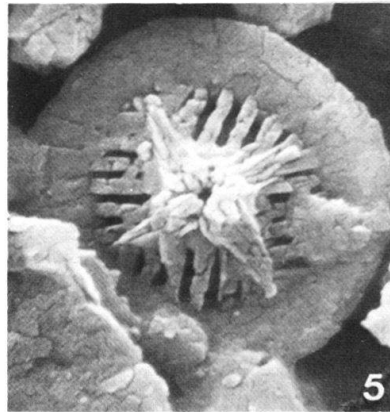
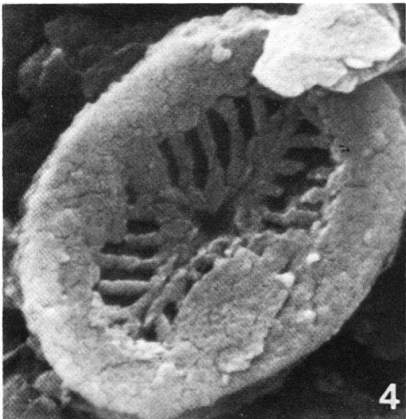
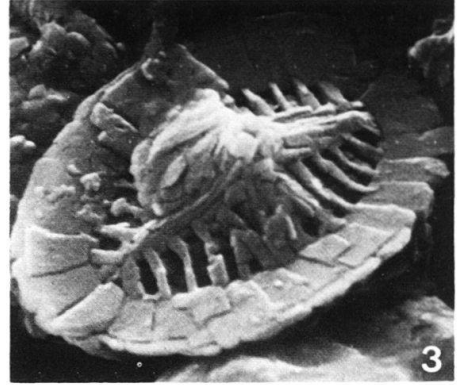
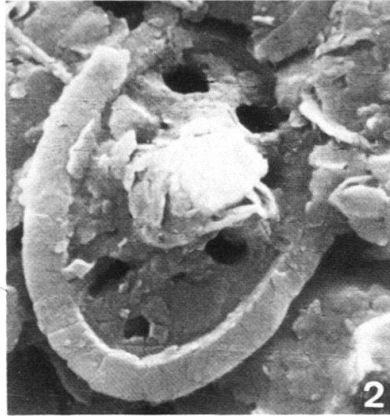
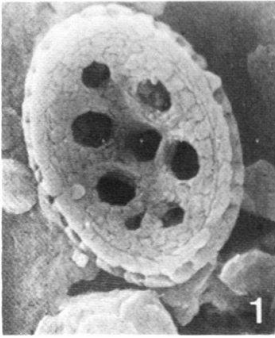


Plate 7

- Fig. 1 *Sollasites bipolaris* ROOD, HAY & BARNARD 1971
Proximal view. Upper Oxford Clay, Gamlingay Borehole at 64 feet (19.51 m). SAC 197. SEM 72/3690, $\times 29,000$.
- Fig. 2, 3 *Palaeopontosphaera dubia* NOËL 1965
2: Cocosphere, showing variation in the central structure of the coccoliths. Upper Oxford Clay, Gamlingay Borehole at 68 feet (20.73 m). SAC 199. SEM 72/3674, $\times 10,500$.
3: Distal view. Upper Oxford Clay, Gamlingay Borehole at 70 feet (21.34 m). SAC 200. SEM 72/3640, $\times 13,500$.
- Fig. 4, 5 *Discorhabdus patulus* (DEFLANDRE 1954)
4: Lateral view. Lower Kimmeridge Clay, Haddenham Borehole at 80 feet (24.39 m). SAC 22. SEM 72/3555, $\times 8,500$.
5: Oblique proximal view of the same specimen. SEM 72/3556, $\times 8,500$.
- Fig. 6-8 *Discorhabdus* sp. 2
6: Distal view. Upper Oxford Clay, Gamlingay Borehole at 68 feet (20.73 m). SAC 199. SEM 72/3660, $\times 18,000$.
7: (?) Proximal view. Middle Oxford Clay, Gamlingay Borehole at 140 feet (42.68 m). SAC 238. SEM 72/3737, $\times 17,500$.
8: Distal view. Upper Oxford Clay, Gamlingay Borehole at 68 feet (20.73 m). SAC 199. SEM 72/3682, $\times 22,500$.
- Fig. 9, 10 *Discorhabdus longicornis* sp. n.
9: Holotype, oblique distal view. Upper Oxford Clay, Gamlingay Borehole at 64 feet (19.51 m). SAC 197. SEM 72/3692, $\times 17,500$.
10: Lateral view. Middle Oxford Clay, Gamlingay Borehole at 140 feet (42.68 m). SAC 238. SEM 73/5136, $\times 14,000$.
- Fig. 11 *Thoracosphaera deflandrei* KAMPTNER 1956
Sphere. Upper Oxford Clay, Haddenham Borehole at 230 feet (70.12 m). SAC 107. SEM 72/3826, $\times 3,000$.
- Fig. 12 *Schizosphaerella punctulata* DEFLANDRE & DANGEARD 1938
Oblique view of a sphere. Middle Jurassic, Upper Fullers Earth, Horsecombe Vale Borehole No. 15 [NGRST75556225] at 104 feet 8 inches-105 feet 7 inches (31.90-32.20 m). SAC 1038. SEM 73/5978, $\times 6,000$.

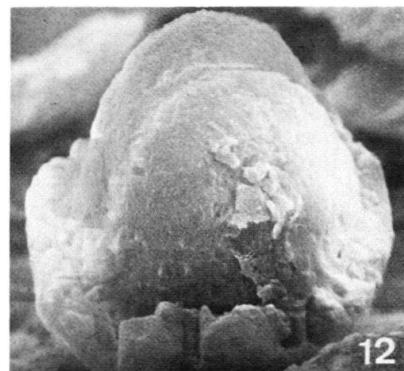
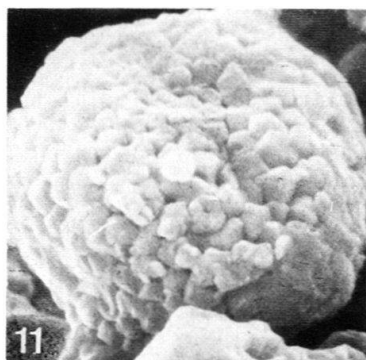
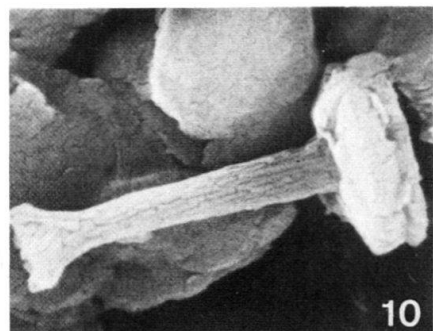
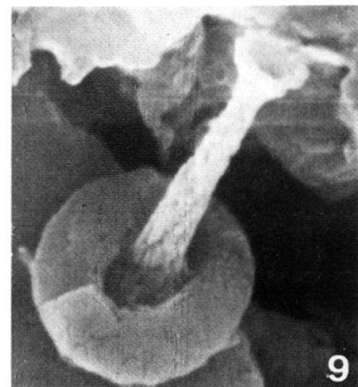
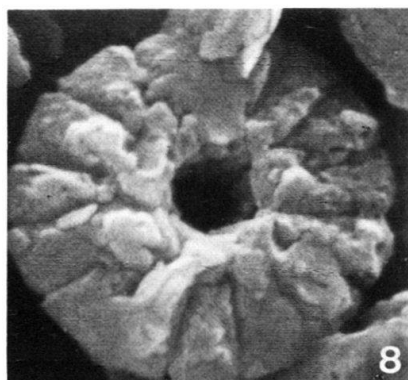
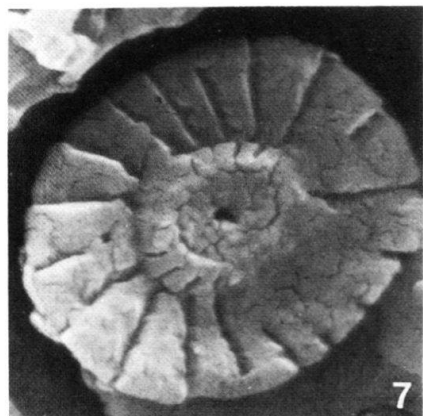
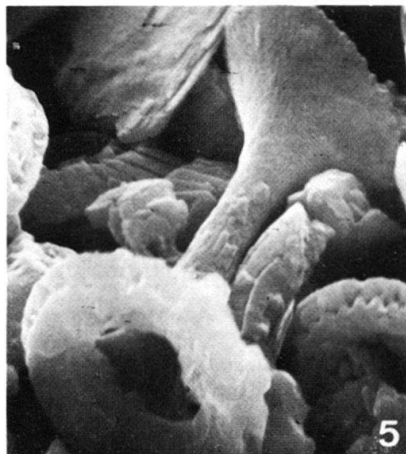
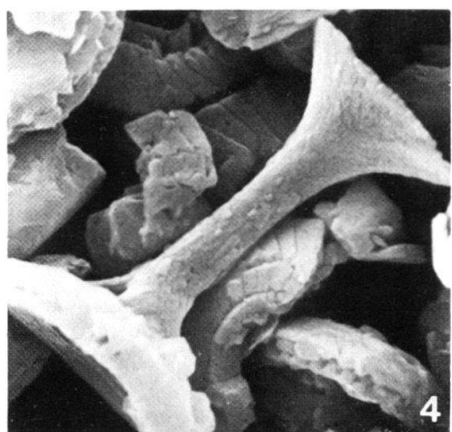
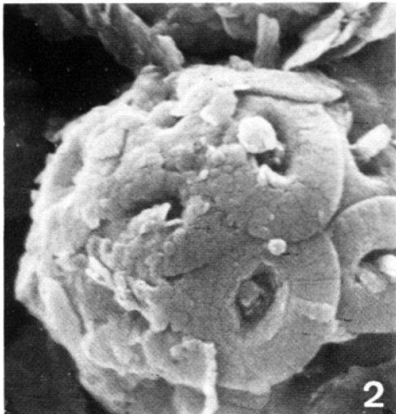
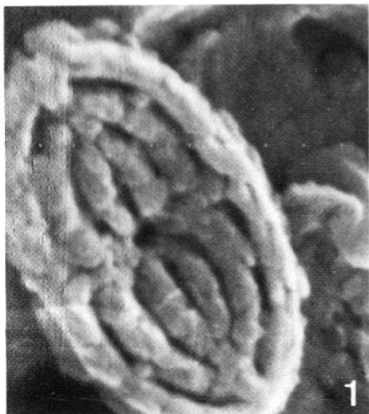


Plate 8

- Fig. 1, 2 *Ellipsagelosphaera britannica* (STRADNER 1963)
1: Cocosphere. Upper Oxford Clay, Gamlingay Borehole at 68 feet (20.73 m). SAC 199. SEM 72/3666, $\times 12,000$.
2: Distal view of the two size variants of this species. Middle Oxford Clay, Gamlingay Borehole at 140 feet (42.68 m). SAC 238. SEM 73/4950, $\times 6,000$.
- Fig. 3, 4 *Actinosphaera deflandrei* NOËL 1965
3: Distal view. Upper Oxford Clay, Gamlingay Borehole at 90 feet (27.44 m). SAC 210. SEM 72/3458, $\times 25,000$.
4: Cocosphere. Lower Kimmeridge Clay, Haddenham Borehole at 80 feet (24.39 m). SAC 22. SEM 72/3569, $\times 10,500$.
- Fig. 5 *Cyclagelosphaera margereli* NOËL 1965
Distal view. Ampthill Clay, Haddenham Borehole at 190 feet (57.93 m). SAC 80. SEM 72/3739, $\times 10,000$.
- Fig. 6 *Calolithus martelae* NOËL 1965
Distal view. Upper Oxford Clay, Gamlingay Borehole at 90 feet (27.44 m). SAC 210. SEM 72/3470, $\times 12,000$.
- Fig. 7, 8 *Ellipsagelosphaera reinhardtii* (ROOD, HAY & BARNARD 1971)
7: Distal view. Lower Kimmeridge Clay, Haddenham Borehole at 80 feet (24.39 m). SAC 22. SEM 72/3551, $\times 14,500$.
8: Proximal view. Lower Kimmeridge Clay, Haddenham Borehole at 80 feet (24.39 m). SAC 22. SEM 72/3564, $\times 16,000$.
- Fig. 9-12 *Ellipsagelosphaera crucicentralis* MEDD 1971
9: Distal view. Upper Oxford Clay, Gamlingay Borehole at 63 feet (19.21 m). SAC 196. SEM 72/3823, $\times 5,000$.
10: Distal view. Upper Oxford Clay, Gamlingay Borehole at 70 feet (21.34 m). SAC 200. SEM 72/3625, $\times 17,000$.
11: Distal view. Ampthill Clay, Haddenham Borehole at 110 feet (33.54 m). SAC 38. SEM 72/3707, $\times 14,500$.
12: Distal view. Upper Oxford Clay, Gamlingay Borehole at 68 feet (20.73 m). SAC 199. SEM 76/12392, $\times 13,000$.

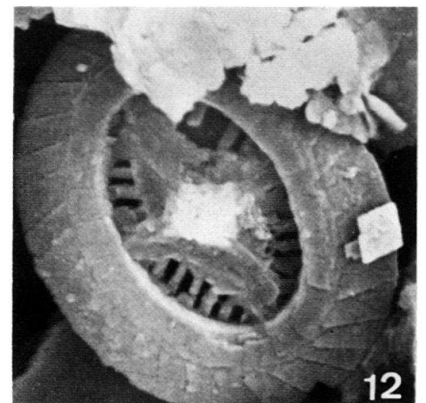
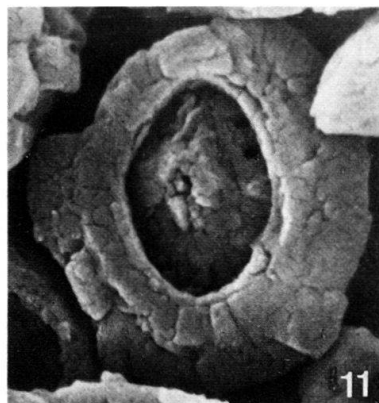
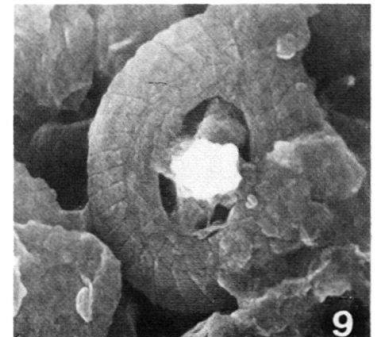
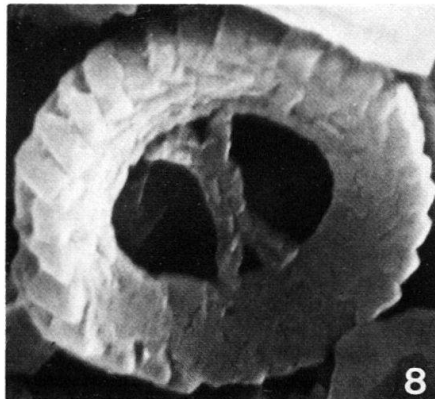
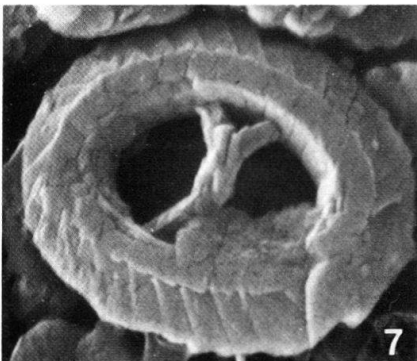
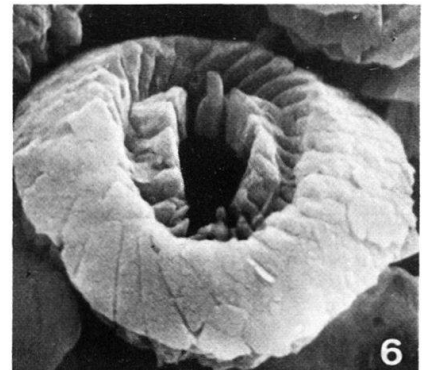
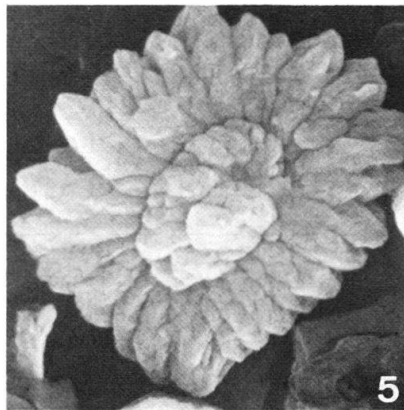
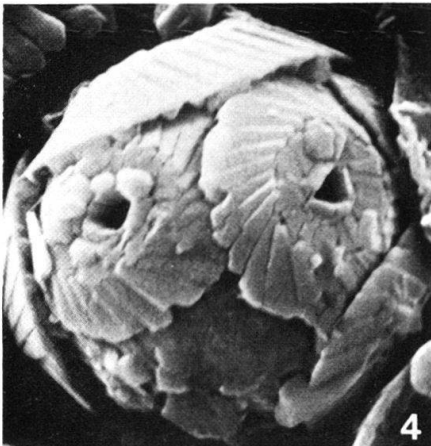
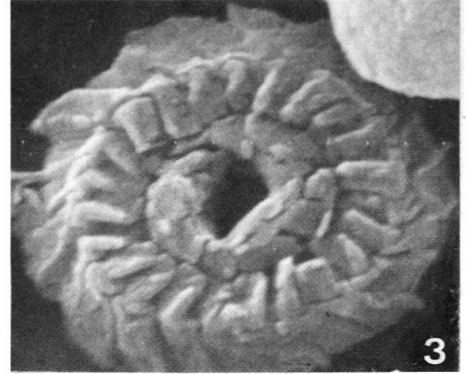
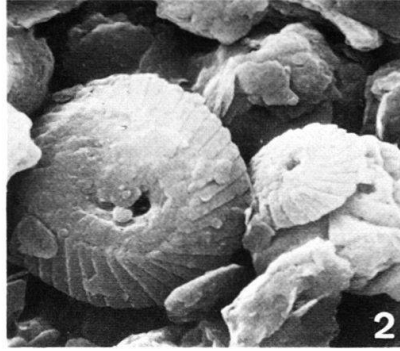
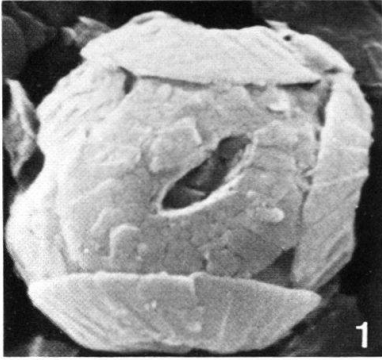


Plate 9

- Fig. 1 *Sollasites horticus* (STRADNER, ADAMIKER & MARESCH 1966)
Distal view. Middle Oxford Clay, Gamlingay Boreholes at 140 feet (42.68 m).
SAC 238. SEM 72/3738, $\times 17,000$.
- Fig. 2-5 *Sollasites lowei* (BUKRY 1969)
2: Distal view. Middle Oxford Clay, Gamlingay Borehole at 140 feet (42.68 m).
SAC 238. SEM 72/3733, $\times 24,000$.
3: Distal view. Upper Oxford Clay, Gamlingay Borehole at 64 feet (19.51 m).
SAC 197. SEM 72/3698, $\times 24,000$.
4: Distal view. Upper Oxford Clay, Gamlingay Borehole at 70 feet (21.34 m).
SAC 200. SEM 72/3610, $\times 12,000$.
5: Distal view. Upper Oxford Clay, Haddenham Borehole at 230 feet (70.12 m).
SAC 107. SEM 72/3706, $\times 18,000$.
- Fig. 6-8 *Parhabdolithus pseudobelgicus* sp. n.
6: Holotype, lateral view. Upper Oxford Clay, Gamlingay Borehole at 64 feet
(19.51 m). SAC 197. SEM 76/12274, $\times 6,000$.
7: Holotype, oblique proximal view. *Ibid.* SEM 76/12277, $\times 8,000$.
8: Paratype, lateral view. Upper Oxford Clay, Gamlingay Borehole at 68 feet
(20.73 m). SAC 199. SEM 76/12293, $\times 8,000$.
- Fig. 9 *Tubirhabdus patulus* ROOD, HAY & BARNARD 1972 ex PRINS 1969
Distal view. Upper Oxford Clay, Haddenham Borehole at 240 feet (73.15 m).
SAC 112. SEM 76/12300, $\times 16,000$.
- Fig. 10 *Zeugrhabdotus erectus* (DEFLANDRE 1954)
Oblique distal view showing the long, central spine. Lower Kimmeridge Clay,
Haddenham Borehole at 50 feet (15.24 m). SAC 7. SEM 72/3605, $\times 12,000$.
- Fig. 11 *Actinozygus crux* (DEFLANDRE & FERT 1952)
Distal view. Lower Kimmeridge Clay, Haddenham Borehole at 80 feet (24.39 m).
SAC 22. SEM 72/3573, $\times 24,000$.
- Fig. 12 *Zeugrhabdotus salillum* (NOËL 1965)
Distal view. Middle Oxford Clay, Gamlingay Borehole at 140 feet (42.68 m). SAC 238.
SEM 72/3724, $\times 20,000$

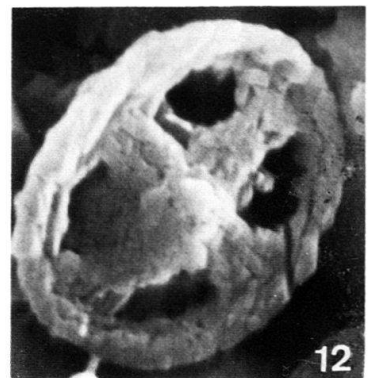
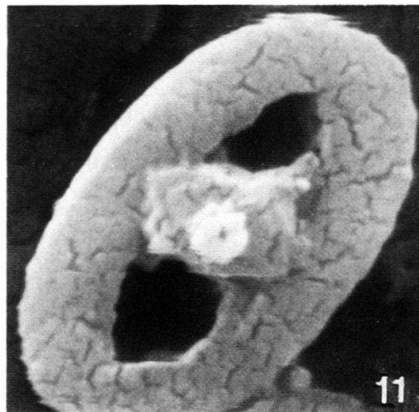
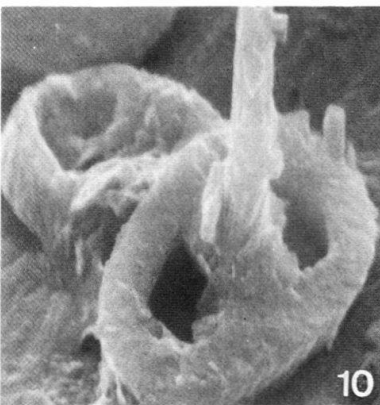
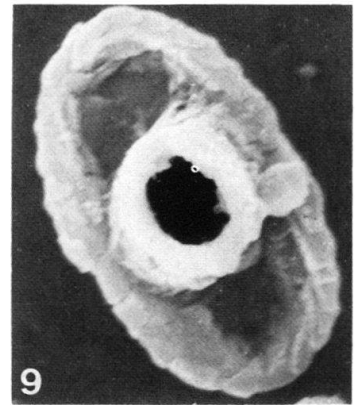
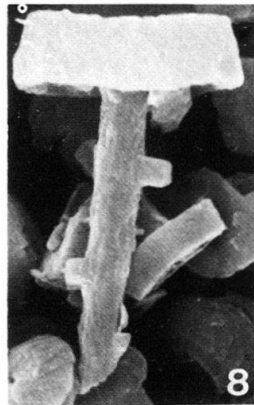
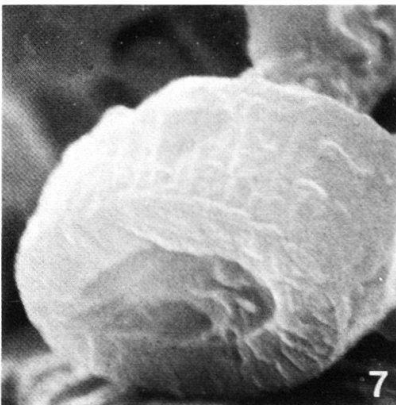
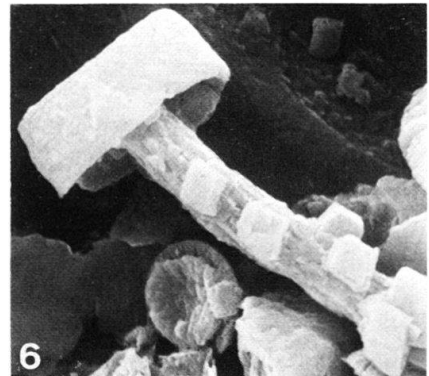
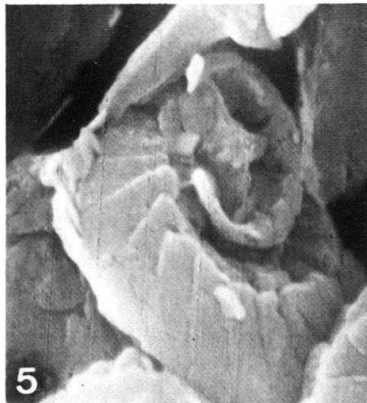
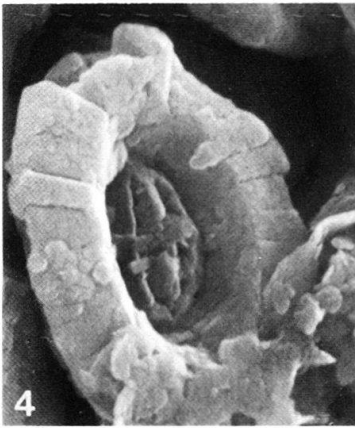
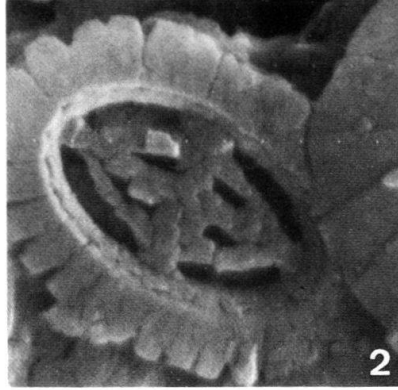
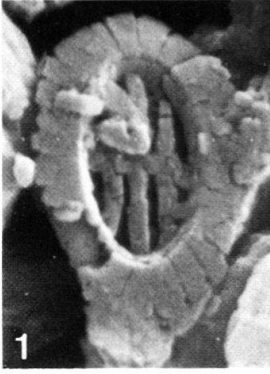


Plate 10

- Fig. 1-3 *Zeugrhabdotus erectus* (DEFLANDRE 1954)
1: Coccosphere. Middle Oxford Clay, Millbrook Section, near Ampthill, Bedfordshire. SAB 175. SEM 76/12297, $\times 3,000$.
2: Distal view, long spined form. Upper Oxford Clay, Gamlingay Borehole at 64 feet (19.51 m). SAC 197. SEM 76/12285, $\times 12,000$.
3: Lateral view. *Ibid.* SEM 76/12284, $\times 8,000$.
- Fig. 4, 5 *Chiastozygus asymmetricus* sp. n.
4: Holotype, distal view, optical micrograph. Middle Oxford Clay, Millbrook section near Ampthill, Bedfordshire. SAB 175. Slide number MPK 1173 (IGS slide collection, Leeds). $\times 6,000$.
5: Paratype, distal view, optical micrograph. *Ibid.*
- Fig. 6, 7, 10 *Staurorhabdus magnus* sp. n.
6: Distal view, optical micrograph. Upper Oxford Clay, Gamlingay Borehole at 65 feet (19.80 m). SAC 2950. Slide number MPK 1172 (IGS slide collection, Leeds). $\times 4,000$.
7: Another specimen, optical micrograph. *Ibid.* $\times 4,500$.
10: Holotype, distal view. Upper Oxford Clay, Gamlingay Borehole at 110 feet (33.53 m). SAC 220. SEM 76/12632, $\times 9,500$.
- Fig. 8, 9 *Proculithus fistulatus* sp. n. ex PRINS 1969
8: Holotype, lateral view, optical micrograph. Upper Lias (Toarcian), *falciferum* Zone, Hill Lane Borehole at 42.65 feet (13 m), Brent Knoll [NGRST335516]. SAC 2452. Slide number MPK 1174 in the IGS collection, Leeds. $\times 4,000$.
9: Another specimen, optical micrograph. *Ibid.*
- Fig. 11 *Proculithus charlotteii* sp. n.
Lateral view, broken interior. Upper Oxford Clay, Gamlingay Borehole at 110 feet (33.53 m). SAC 220. SEM 76/12634, $\times 14,500$.
- Fig. 12 *Diazomatolithus lehmanii* NOËL 1965
Lateral view. Upper Oxford Clay, Haddenham Borehole at 218 feet (66.45 m). SAC 98. SEM 76/12585, $\times 14,000$.

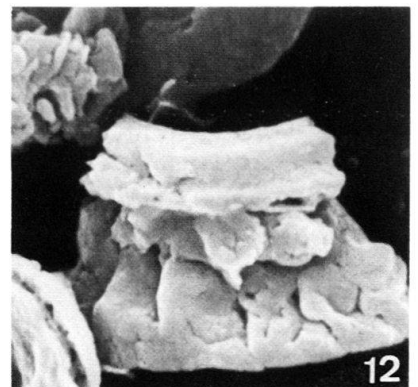
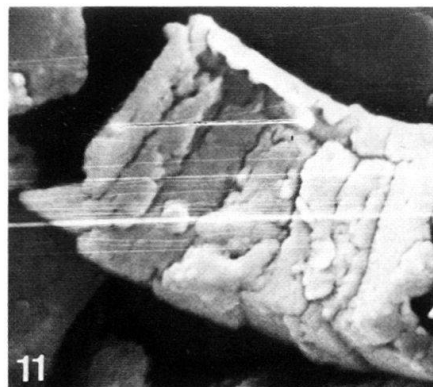
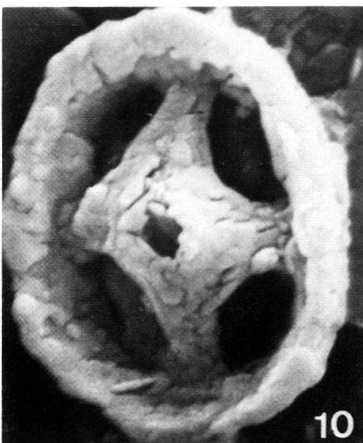
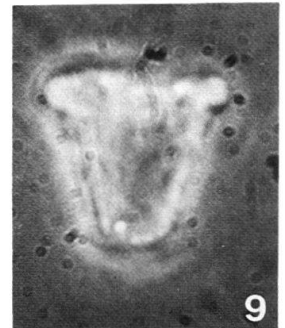
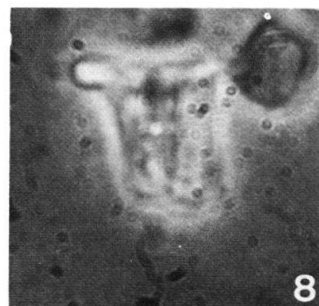
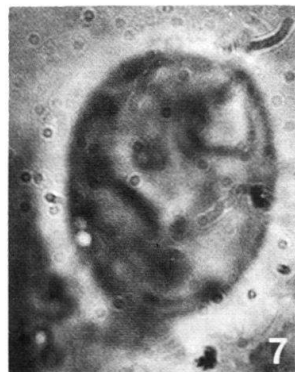
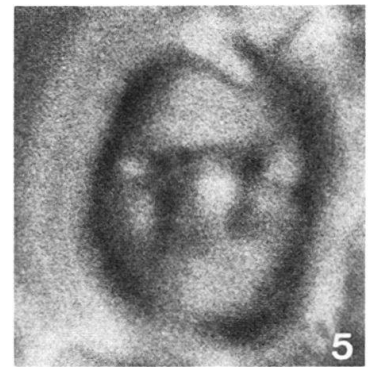
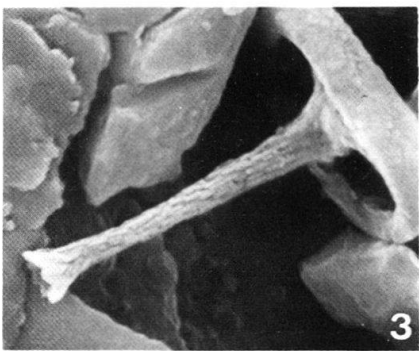
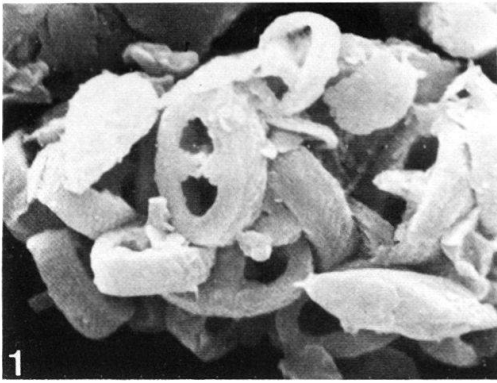


Plate 11

- Fig. 1, 5, 6 *Proculithus expansus* sp. n.
1: Holotype, oblique proximal-lateral view. Upper Oxford Clay, Millbrook section, near Ampthill, Bedfordshire. SAB28. SEM 76/12545, $\times 16,000$.
5: Oblique proximal-lateral view. Upper Oxford Clay, Gamlingay Borehole at 110 feet (33.53 m). SAC220. SEM 76/12630, $\times 18,000$.
6: Lateral view of Figure 5. *Ibid.* SEM 76/12631, $\times 16,000$.
- Fig. 2-4 *Millbrookia perforata* sp. n.
2: Holotype, oblique proximal-lateral view. Middle Oxford Clay, Millbrook section, near Ampthill, Bedfordshire. SAB 175. SEM 76/12535, $\times 16,000$.
3: Proximal view, showing the longer laths adjacent to the shield. *Ibid.* SEM 76/12537, $\times 14,000$.
4: Oblique distal view. *Ibid.* SEM 76/12533, $\times 22,000$.
- Fig. 7, 8 *Millbrookia virgata* sp. n.
7: Holotype, proximal view. *Ibid.* SEM 76/12531, $\times 30,000$.
8: Paratype, (?) distal view. *Ibid.* SEM 76/12525, $\times 30,000$.
- Fig. 9 *Proculithus charlotteii* sp. n.
Holotype, oblique distal-lateral view. Upper Oxford Clay, Millbrook section, near Ampthill, Bedfordshire. SAB28. SEM 76/12547, $\times 20,000$.

