

Zeitschrift: Entomologica Basiliensia
Band: 17 (1994)

Artikel: Zentral- und Westpaläarktische Borken- und Kernkäfer (Coleoptera: Scolytidae, Platypodidae)
Kapitel: Tafeln
Autor: Pfeffer, Antonin
DOI: <https://doi.org/10.5169/seals-980475>

Nutzungsbedingungen

Die ETH-Bibliothek ist die Anbieterin der digitalisierten Zeitschriften. Sie besitzt keine Urheberrechte an den Zeitschriften und ist nicht verantwortlich für deren Inhalte. Die Rechte liegen in der Regel bei den Herausgebern beziehungsweise den externen Rechteinhabern. [Siehe Rechtliche Hinweise.](#)

Conditions d'utilisation

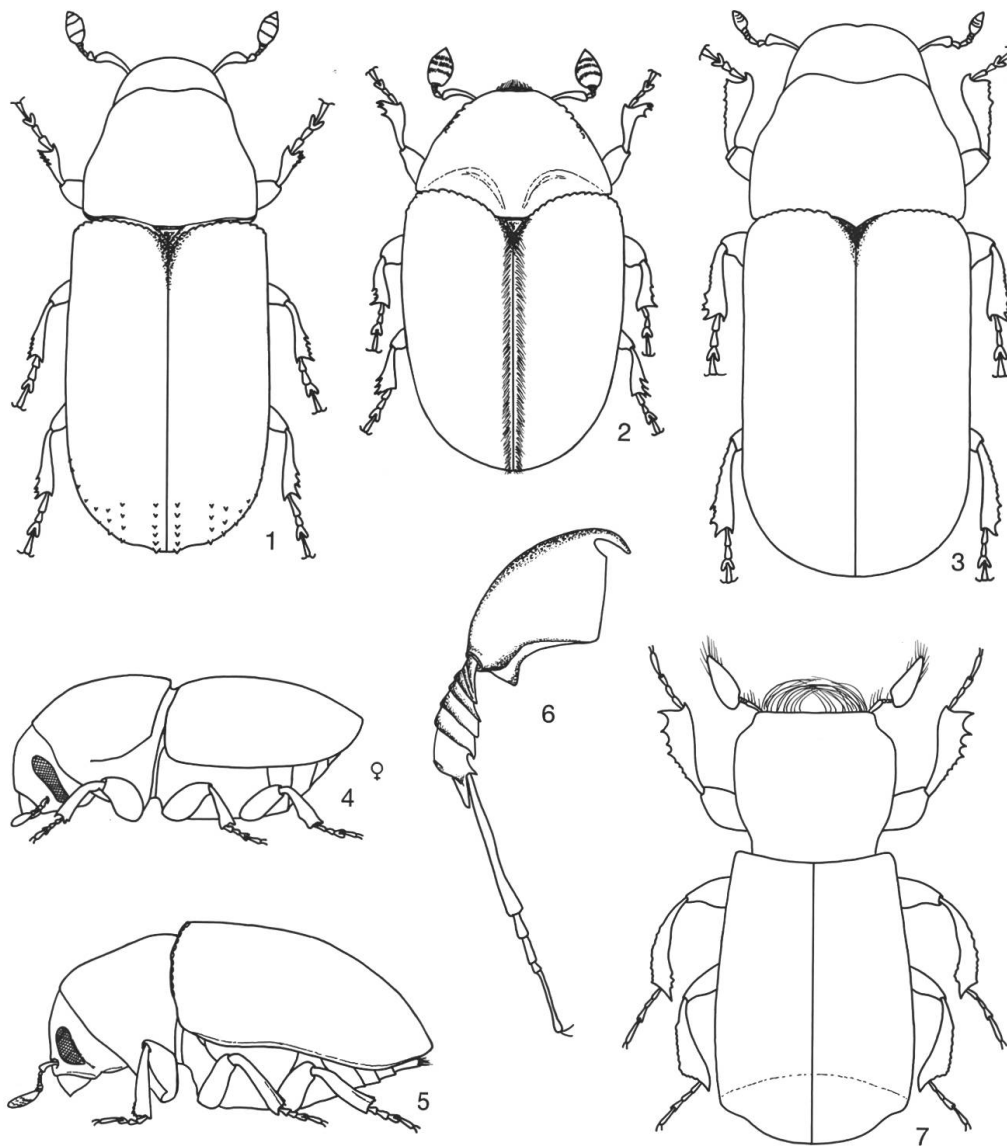
L'ETH Library est le fournisseur des revues numérisées. Elle ne détient aucun droit d'auteur sur les revues et n'est pas responsable de leur contenu. En règle générale, les droits sont détenus par les éditeurs ou les détenteurs de droits externes. [Voir Informations légales.](#)

Terms of use

The ETH Library is the provider of the digitised journals. It does not own any copyrights to the journals and is not responsible for their content. The rights usually lie with the publishers or the external rights holders. [See Legal notice.](#)

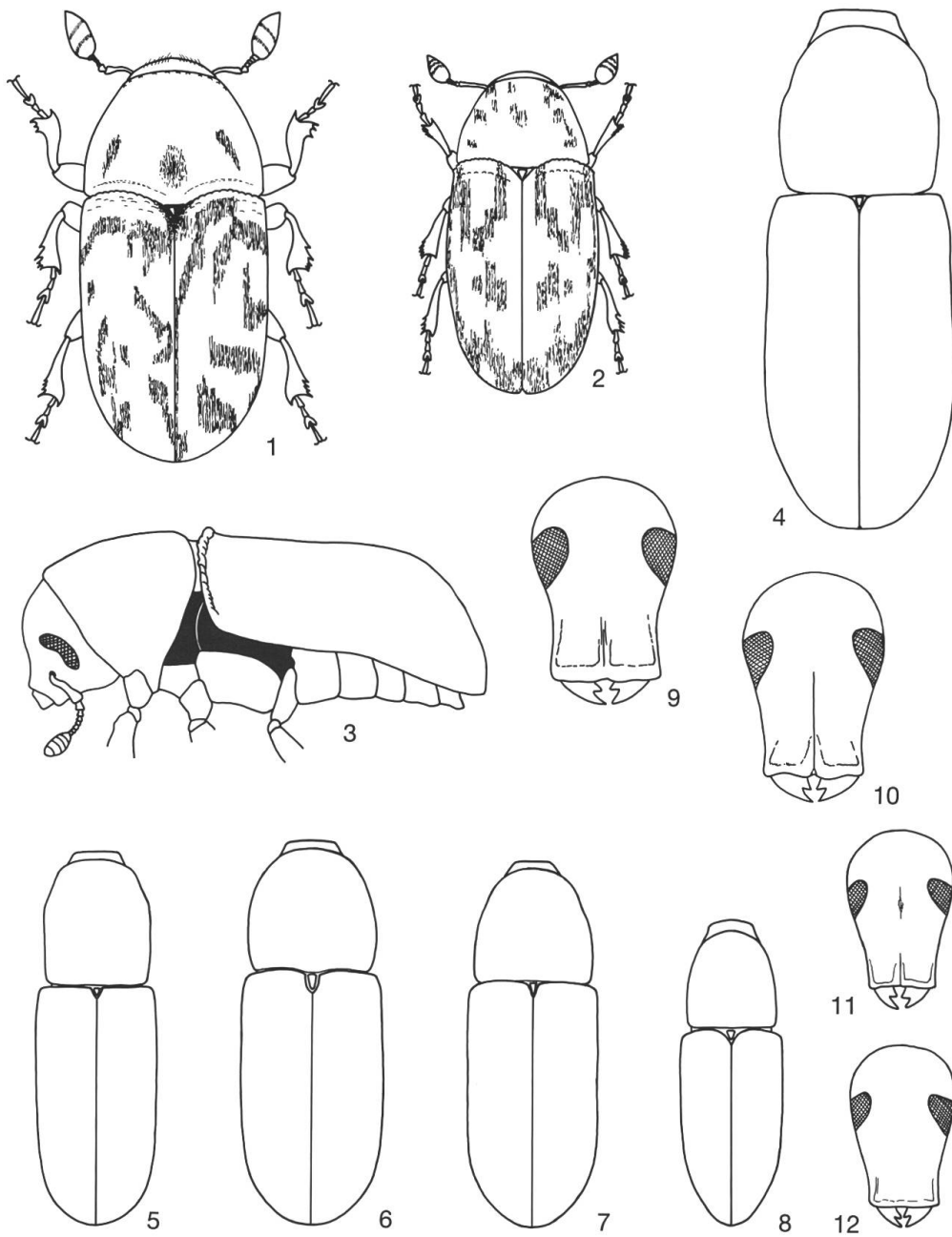
Download PDF: 06.10.2024

ETH-Bibliothek Zürich, E-Periodica, <https://www.e-periodica.ch>



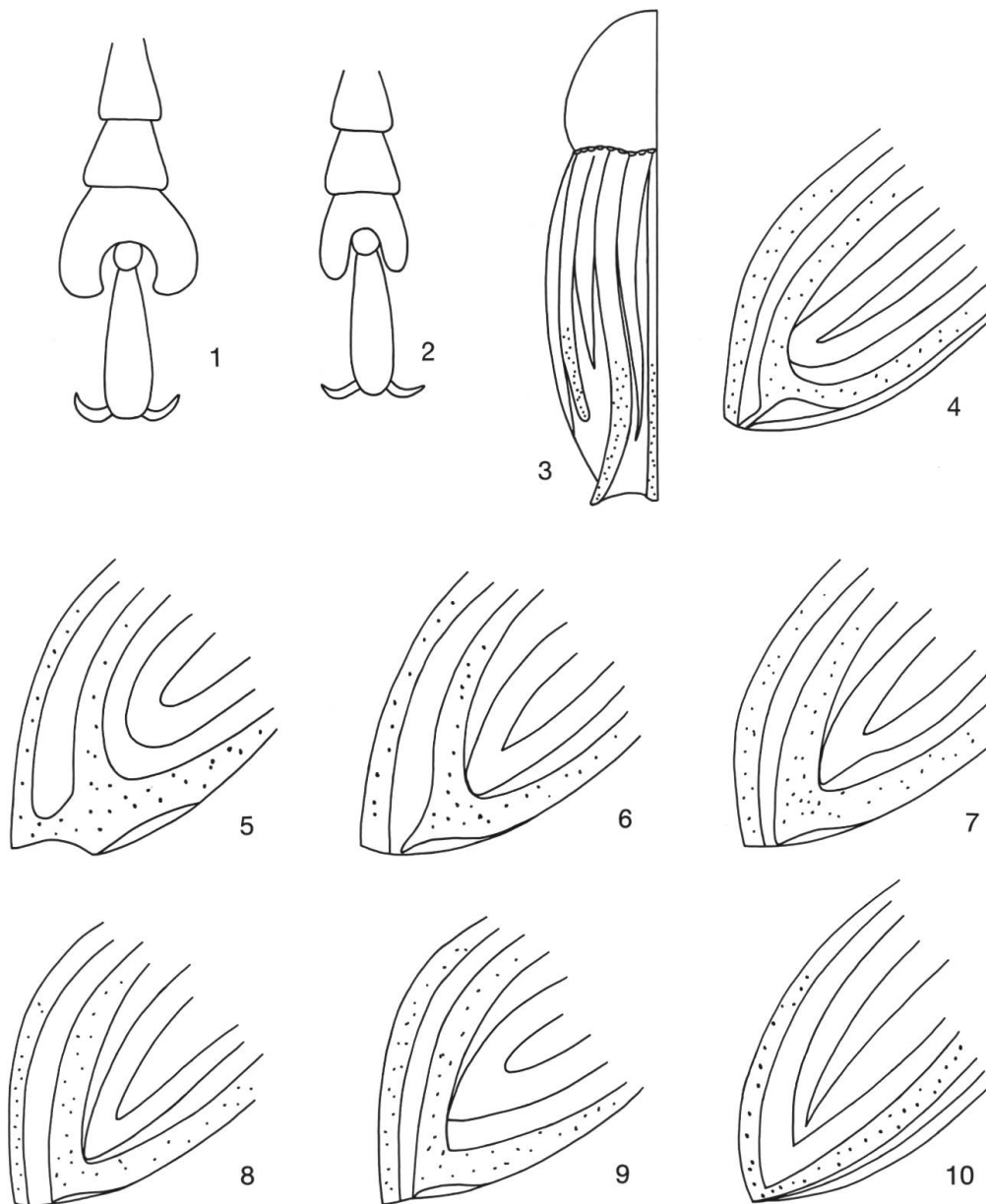
Taf.1: 1 *Tomicus piniperda* (L.); 2 *Hylesinus oleiperda* (F.); 3 *Dendroctonus micans* (Kug.); 4 *Scolytus intricatus* (Ratzb.) ♀; 5 *Hylesinus crenatus* (F.); 6 *Platypus cylindrus* (F.); 7 *Scolytoplatypus daimio* Blandf.

Abb.7 nach Stark, 1952; Abb.1–6 orig. M. Knízek



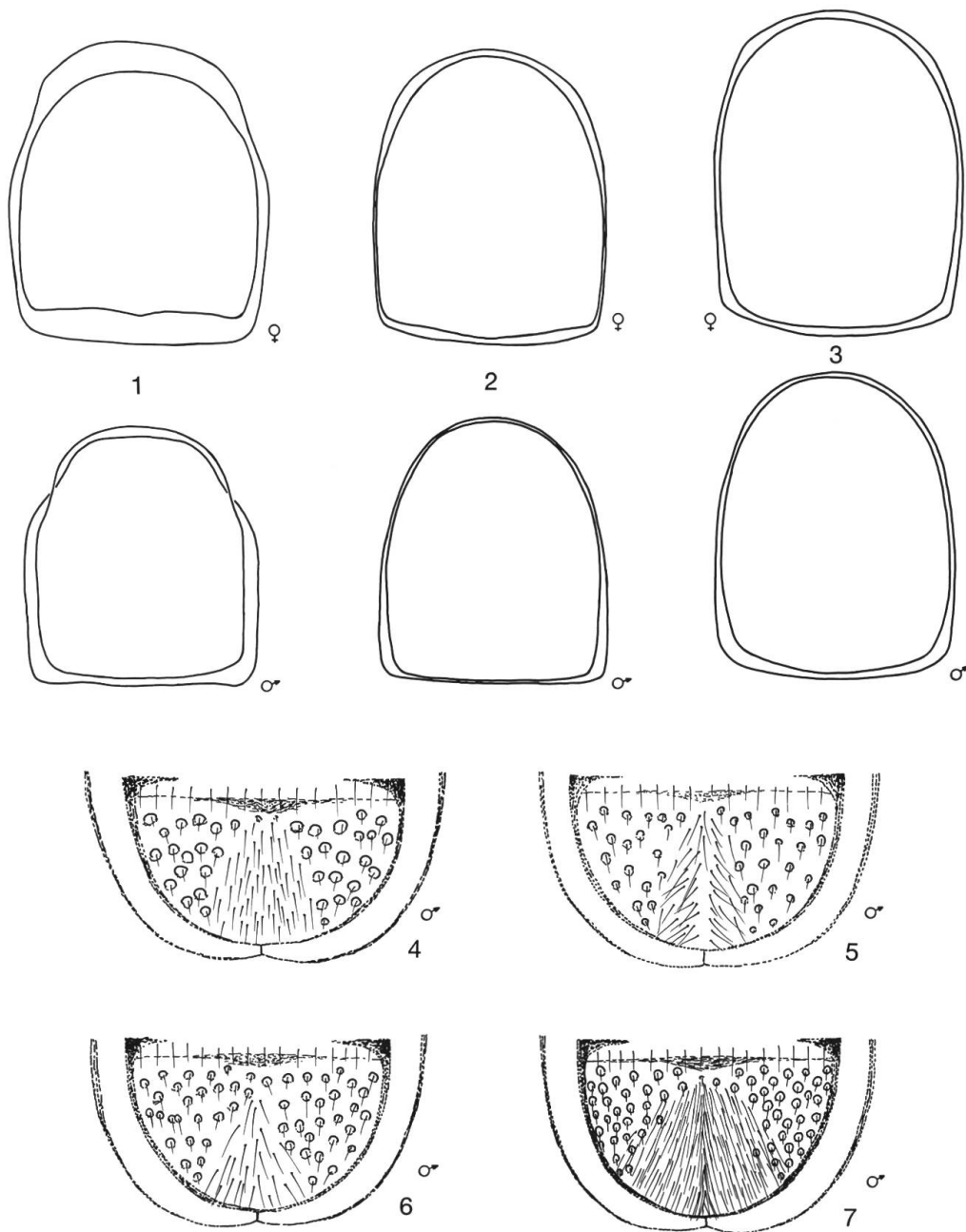
Taf.2: 1 *Leperisinus fraxini* (Panz.); 2 *Pteleobius vittatus* (F.); 3 *Hylastinus obscurus* (Marsh.); 4,9 *Hylastes cunicularius* Er.; 5 *H. linearis* Er.; 6,12 *H. opacus* Er.; 7 *H. angustatus* (Hbst.); 8,11 *H. attenuatus* Er.; 10 *H. ater* (Payk.).

Abb.3 nach Spessivtseff, 1925; 9–12 nach Pfeffer, 1955; 1,2,4–8 orig. M. Knízek



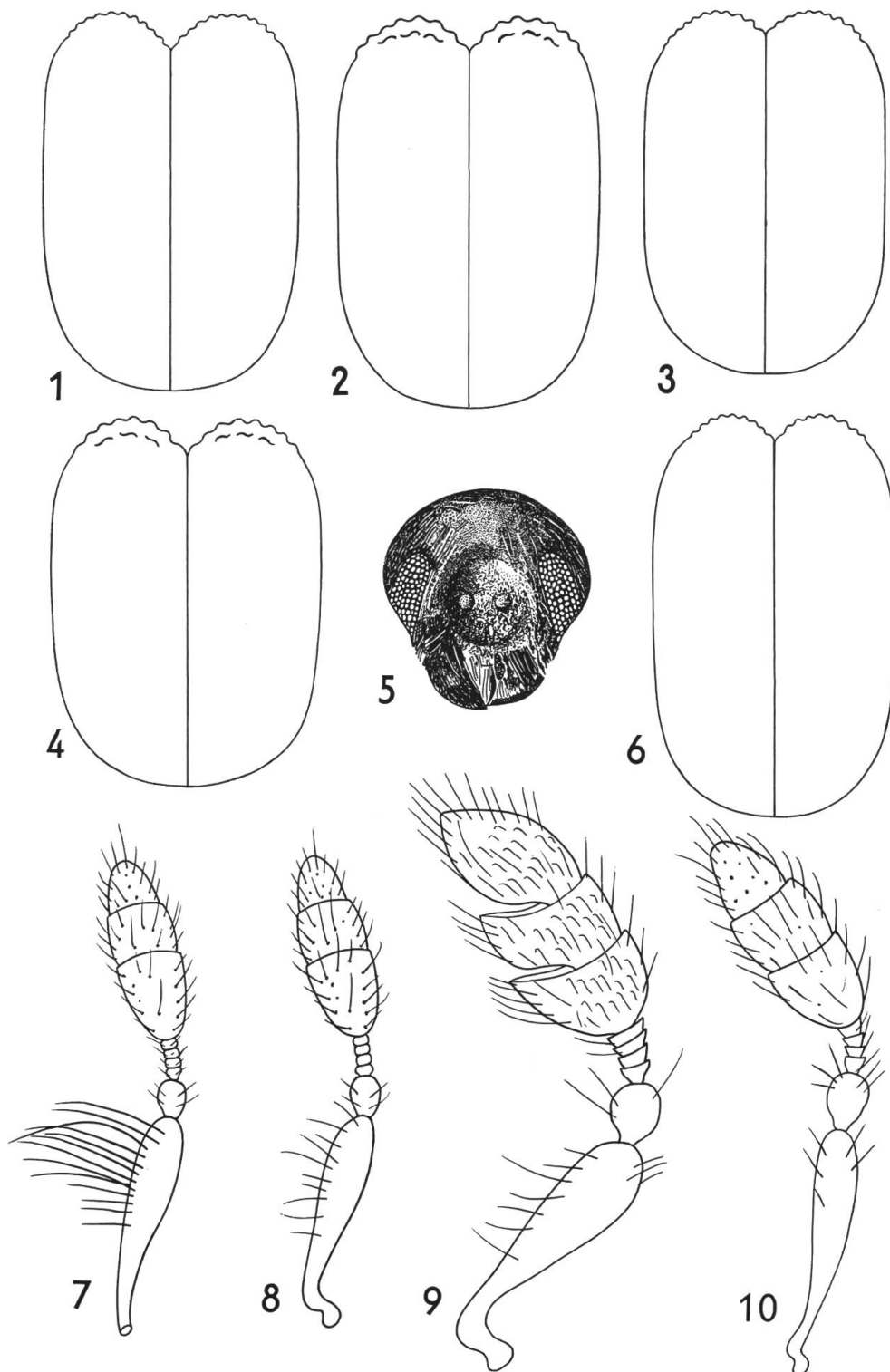
Taf.2A: 1 *Hylurgops glabratus* (Zett.); 2 *Hylastes ater* (Payk.); 3 *Carphoborus rossicus* Sem.; 4 *C. teplouchovi* Spess.; 5 *C. choldkovskyyi* Spess.; 6 *C. minimus* (F.); 7 *C. marani* Pfeff.; 8 *C. henscheli* Reitt.; 9 *C. bonnairei* Briss.; 10 *C. pini* Eichh. ♂.

Abb.1,2 nach Nunberg, 1954; 3,5-10 nach Pfeffer, 1955; 4 orig. M. Knízek



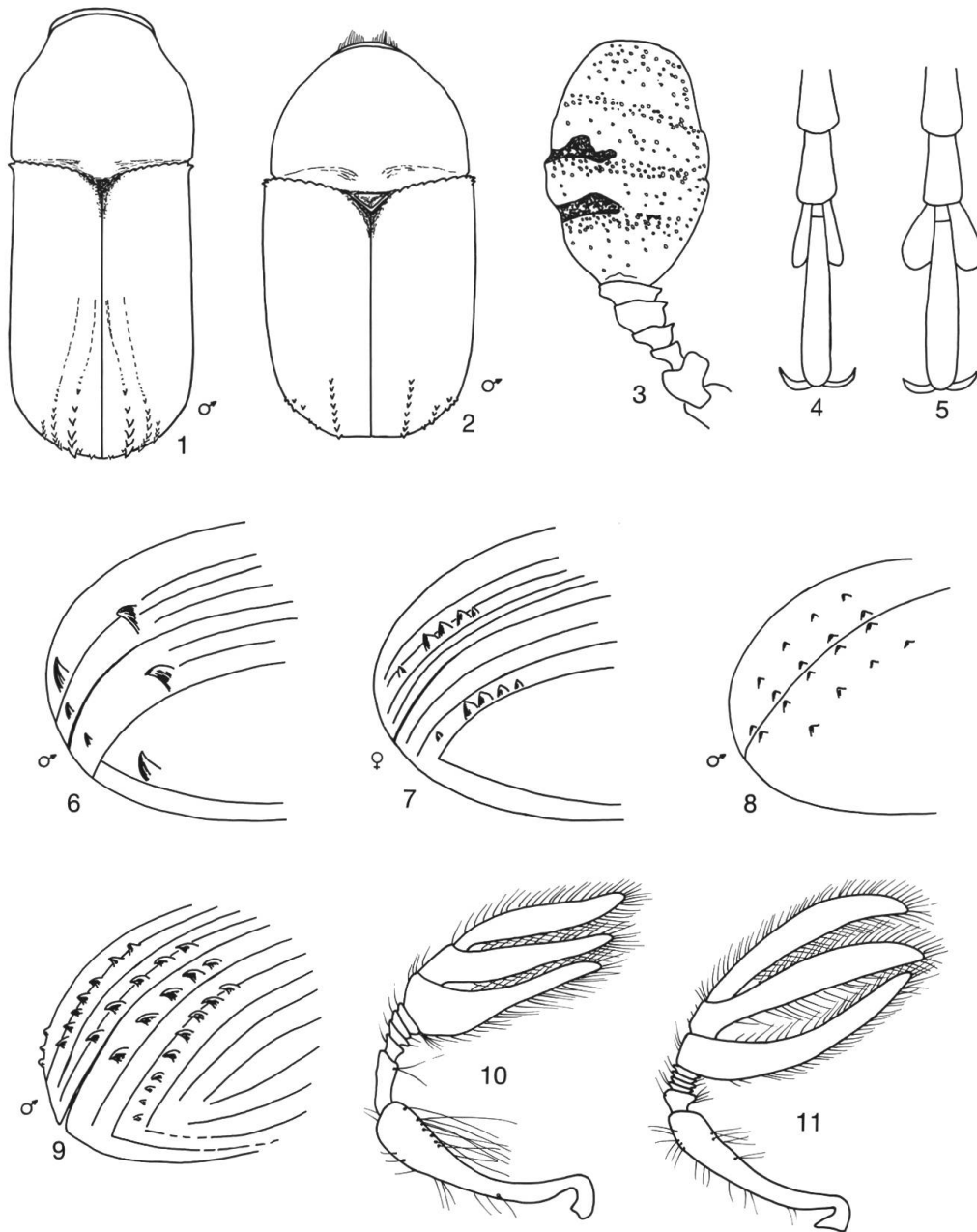
Taf.3: 1,4 *Hylastes cunicularius* Er.; 2,5 *H. brunneus* Er.; 3,6 *H. ater* (Payk.); 7 *H. batnensis anatolicus* Knížek & Pfeffer.

Abb.1-6 nach Grocholski et Aut., 1976; 7 orig. M. Knížek



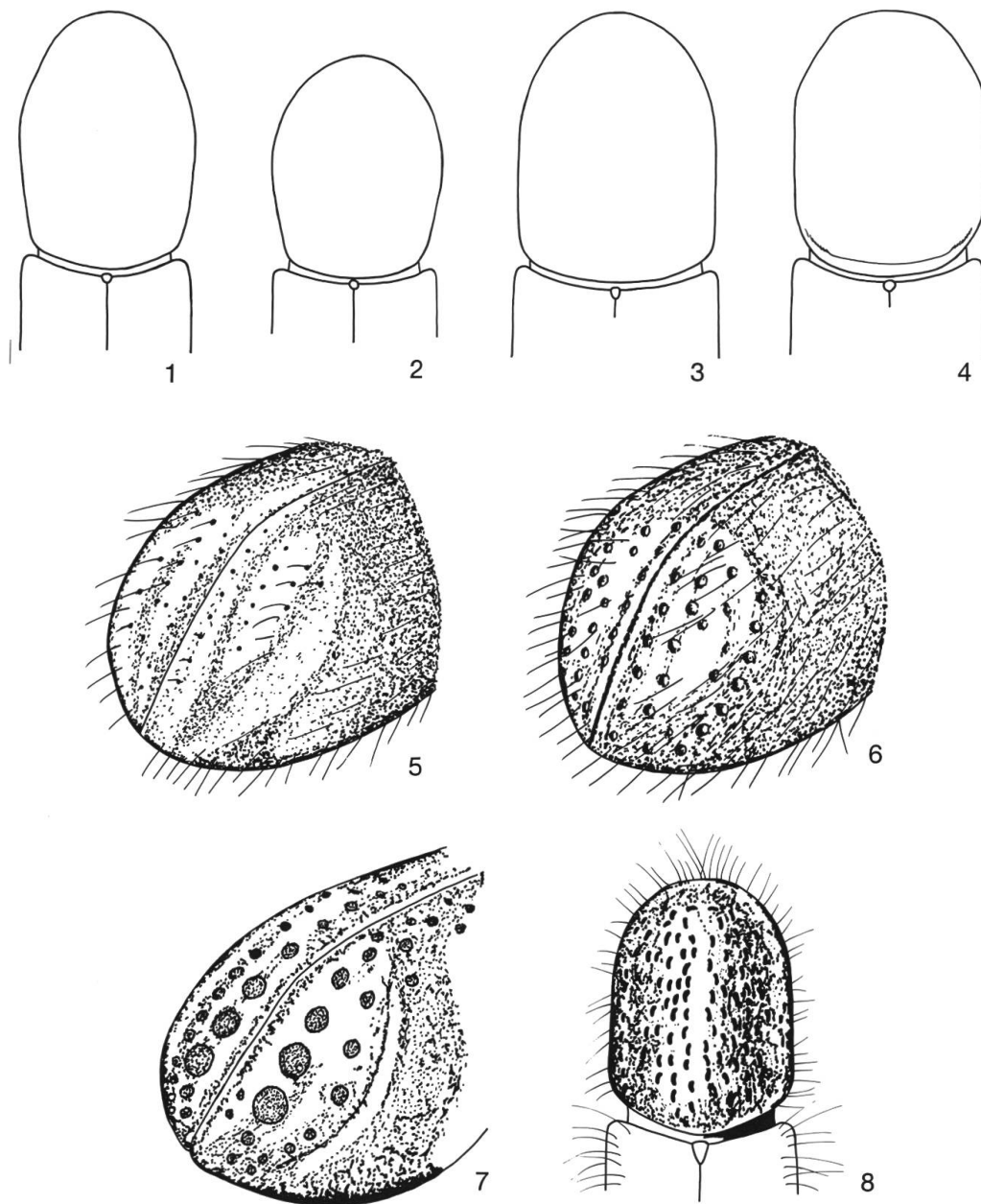
Taf.4: 1,10 *Phloeophthorus peyerimhoffi* Egg.; 2,8 *P. pseudocristatus* Pfeff.; 3 *P. perfoliatus* Woll.; 4,7 *P. cristatus cristatus* Fauv.; 5,6 *P. rhododactylus rhododactylus* (Marsh.); 9 *P. pubifrons pubifrons* Guill.

Abb.1–10 nach Pfeffer, 1982



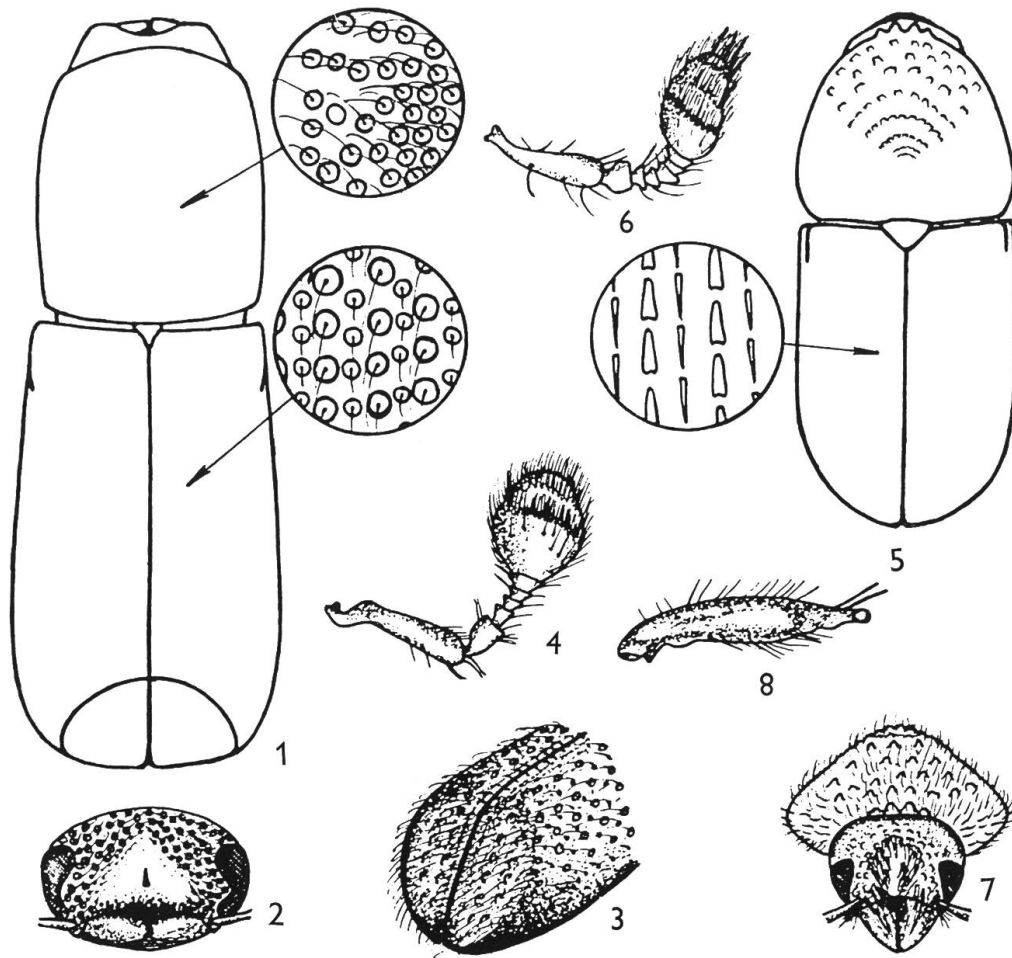
Taf.5: 1 *Phloeosinus turkestanicus* Sem. ♂; 2 *P. thujae thujae* (Perr.) ♂; 3 *P. henschi* Reitt.; 4 *P. aubei* (Perr.); 5,9 *P. rudis* Blandf. ♂; 6,7 *P. armatus* Reitt. ♂,♀; 8 *P. cedri* Briss.; 10 *Phloeotribus caucasicus* Reitt.; 11 *P. scarabaeoides scarabaeoides* (Bern.).

Abb.4,5,9 nach Balachowsky, 1949; 3,6-8 nach Pfeffer, 1955; 1,2,10,11 orig.
M. Knízek

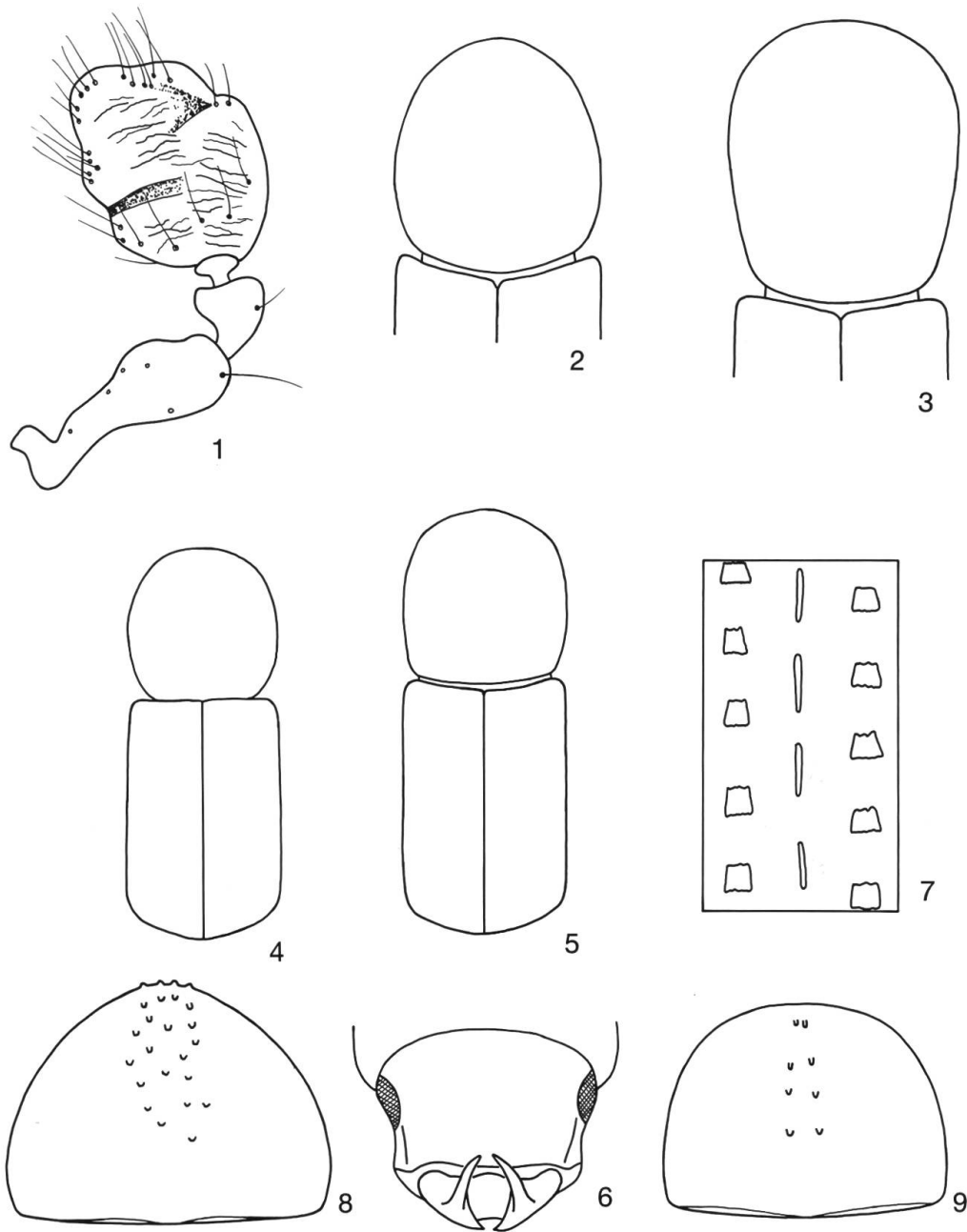


Taf.6: 1,5 *Thammurgus varipes* Eichh.; 2 *T. delphinii* (Rosenh.); 3 *T. petzi* Reitt.; 4,6 *T. kaltenbachii* (Bach); 7,8 *T. brylinskii* Reitt.

Abb.1-8 nach Balachowsky, 1949

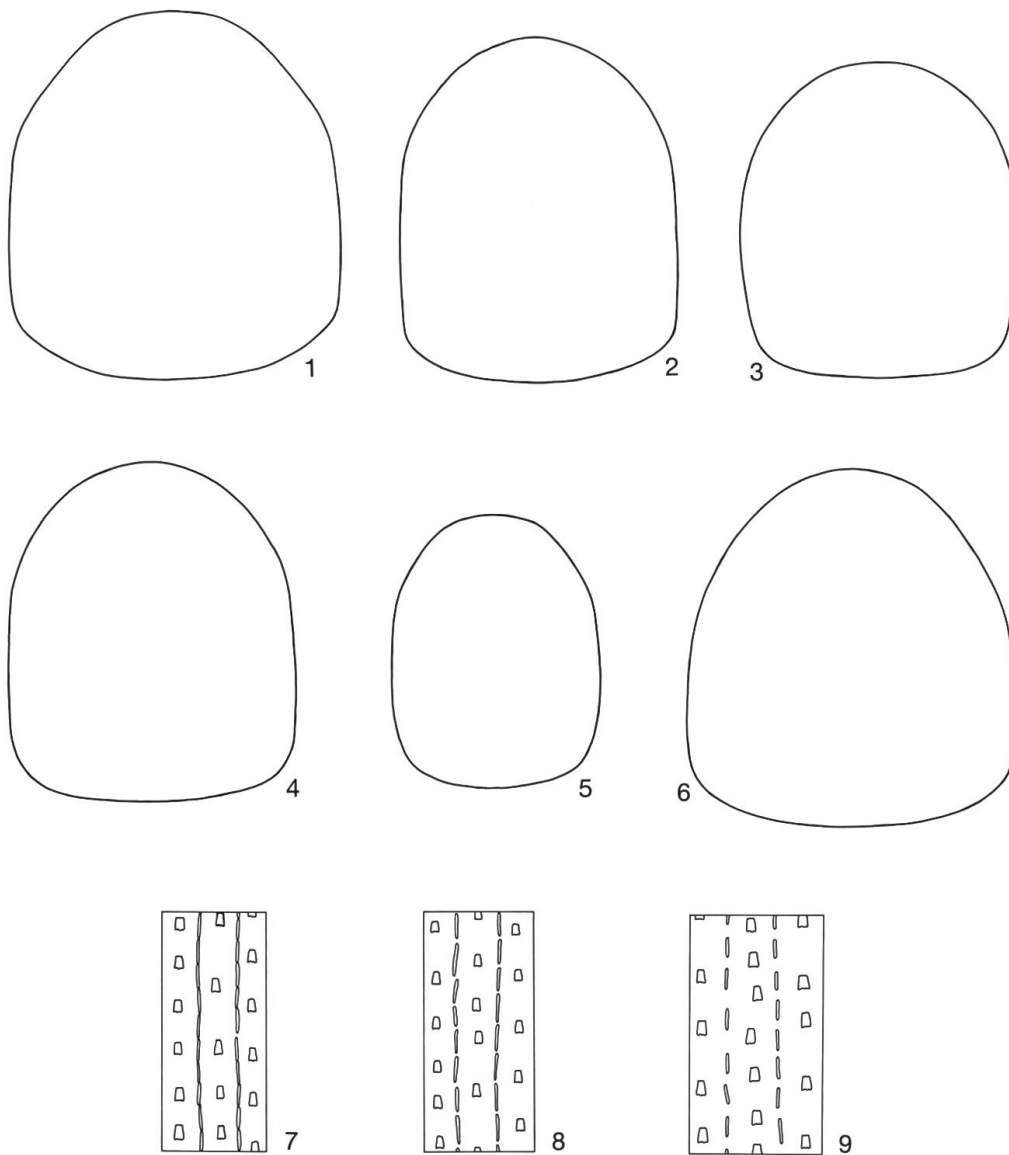


Taf.7: 1-4 *Taphronurgus exul* (Reitt.) ♂; 5-8 *Pseudothysanoe mongolica* (Sokan.).
Orig. M. Knizek



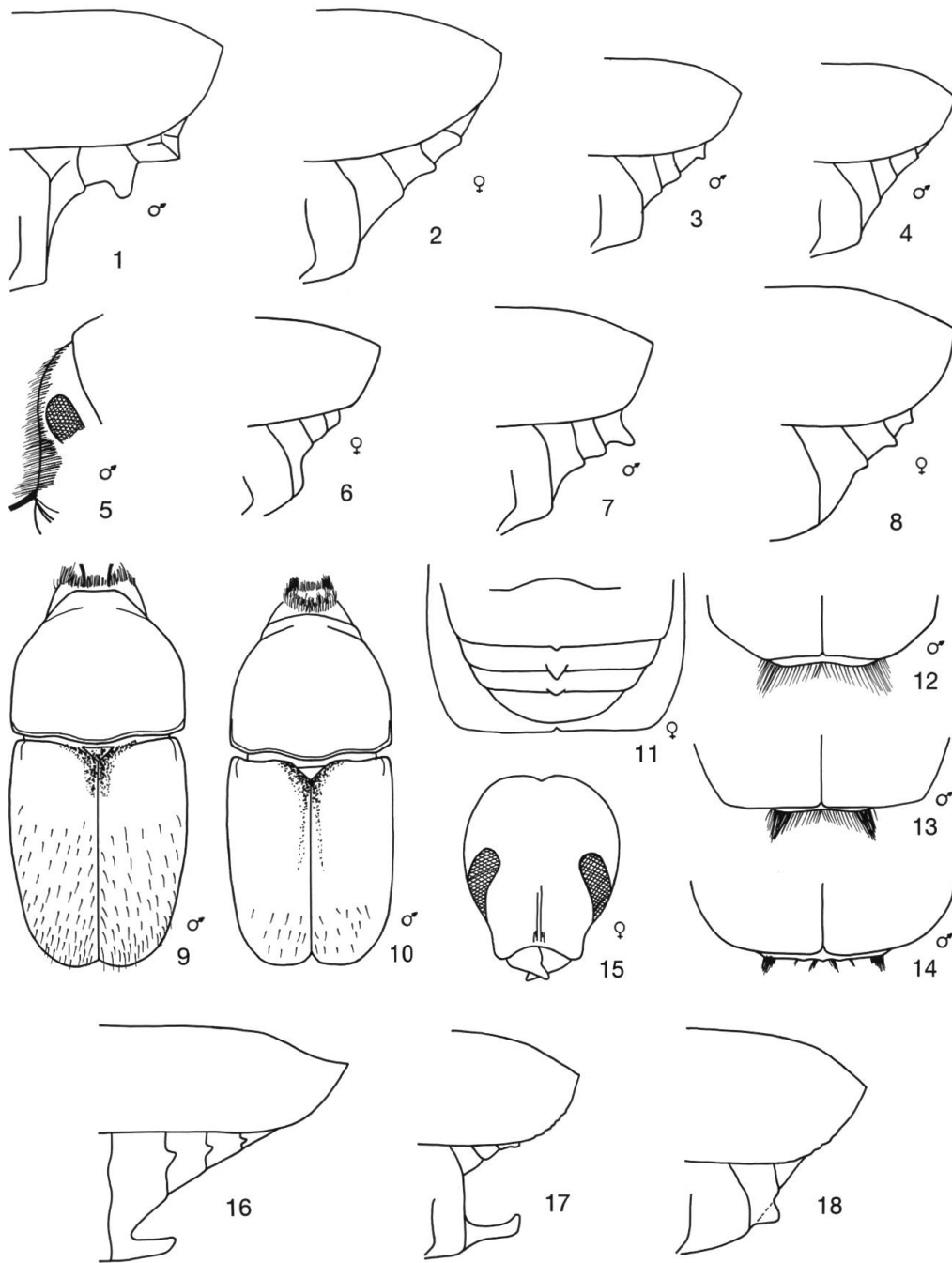
Taf.8: 1 *Crypturgus* sp.; 2 *Cisurgus maurus* Egg.; 3 *C. ferulae* Pfeff.; 4 *Triotemnus subretusus* Woll.; 5,6 *T. longicollis* Peyer. ♂; 7 *Liparthrum mori* (Aubé); 8 *L. corsicum* Eichh.; 9 *L. balachowskyi* Pfeff.

Abb.1,7 nach Balachowsky, 1949; 2,3 nach Pfeffer, 1983; 4-6 nach Peyerimhoff, 1925; 8, 9 orig. M. Knízek



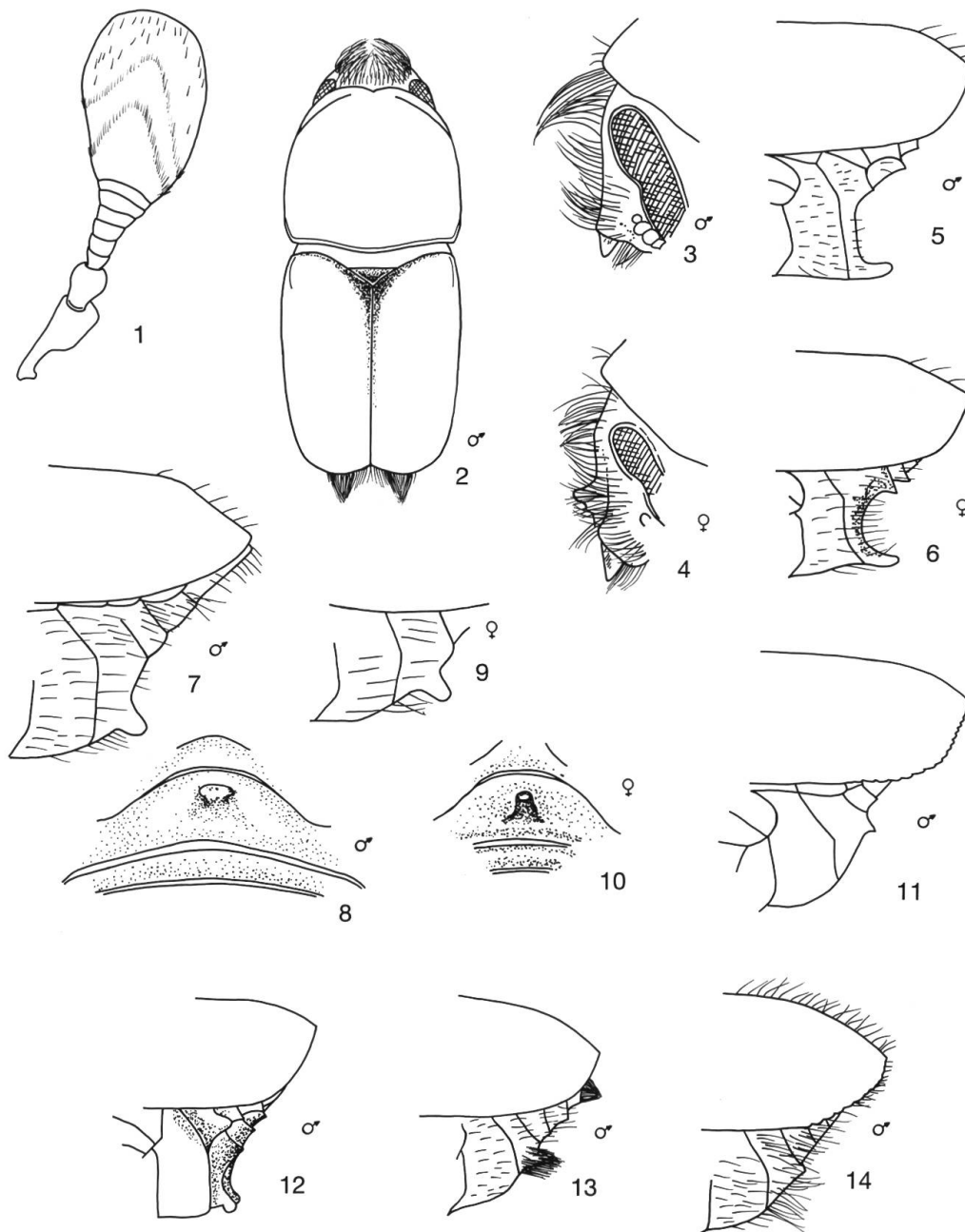
Taf.8A: 1 *Crypturgus cinereus* (Hbst) ♂; 2 *C. dubius* Eichh.; 3 *C. hispidulus* Thoms.; 4 *C. mediterraneus* Eichh.; 5 *C. parallelocollis* Eichh.; 6 *C. numidicus* Ferr. ♀; 7 *Liparthrum genistae genistae* (Aubé); 8 *L. balachowskyi* Pfeff. nom. n.; 9 *L. corsicum* Eichh.

Abb.1-9 orig. M. Knízek



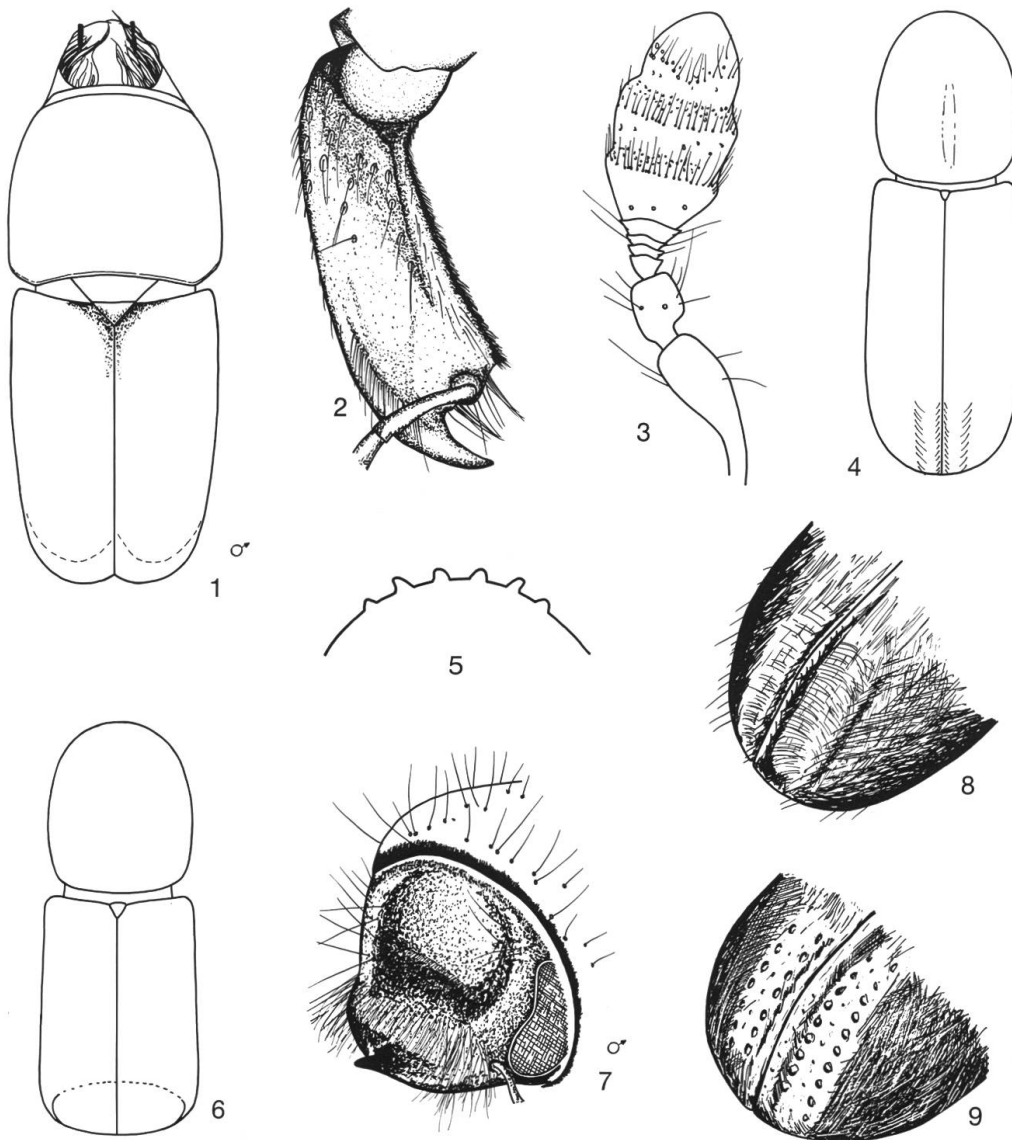
Taf.9: 1,2,15 *Scolytus ratzeburgi* Jans. ♂,♀; 3 *S. laevis* Chap. ♂; 4 *S. mali* (Bechst.) ♂; 5,9 *S. intricatus* (Ratzb.) ♂; 6,7 *S. pygmaeus* (F.) ♂,♀; 8,13 *S. scolytus* (F.) ♂,♀; 10 *S. carpini* (Ratzb.) ♂; 11,12 *S. triarmatus* (Egg.) ♂,♀; 14 *S. sulcifrons* Rey ♂; 16 *S. multistriatus multistriatus* (Marsh.); 17 *S. ensifer* Eichh.; 18 *S. kirschii kirschii* Skal.

Abb.1–10,16–18 nach Michalski, 1973; 15 nach Spessivtseff, 1922; 11–14 orig. M. Knízek



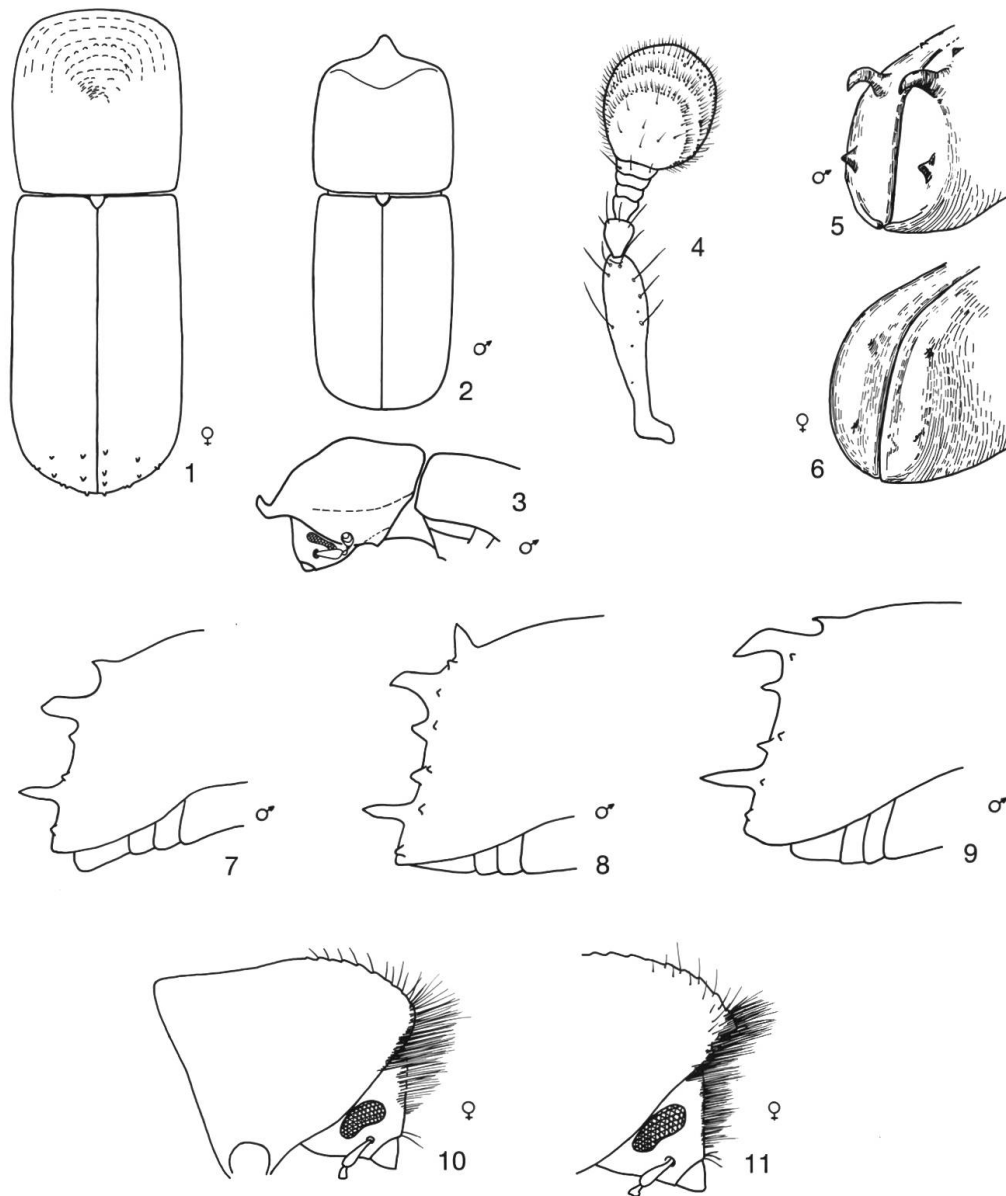
Taf.10: 1 *Scolytus* sp.; 2 *S. eichhoffi* Reitt.; 3,4 *S. gretschkini* Sokan. ♂,♀; 5,6 *S. ecksteini* Butov. ♂,♀; 7–10 *S. schevyrewi* Sem. ♂,♀; 11 *S. jaroschewskii* Schev.; 12 *S. kozikowskii* Mich.; 13 *S. zaitzevi* Butov.; 14 *S. numidicus* Briss.

Abb.1–14 nach Michalski, 1973



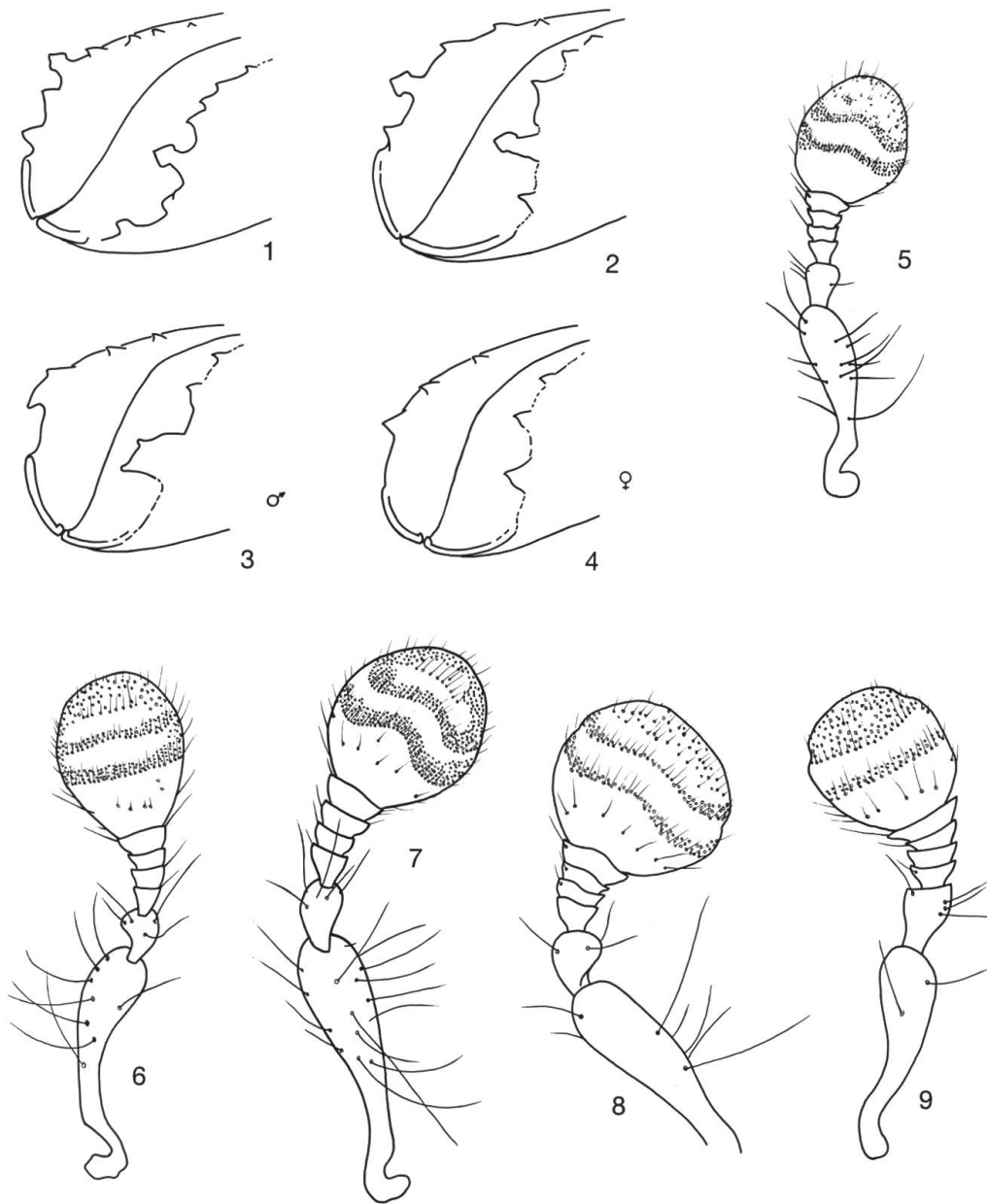
Taf.10A: 1 *Scolytus tadjhikistanicus* Stark; 2 *S. ratzeburgi* Jans.; 3 *Trypophloeus granulatus* (Ratzb.); 4,8 *Lymanator coryli* (Perr.); 5 *Hypothenemus eruditus* Westw.; 6 *Pseudothamnurgus mediterraneus* (Egg.); 7 *P. scrutator* (Pand.); 9 *Lymanator aceris aceris* (Lind.).

Abb.1 nach Michalski, 1973; 3,8,9 nach Nunberg, 1954; 5 nach Wood, 1982; 6,7 nach Balachowsky, 1949; 2,4 orig. M. Knízek



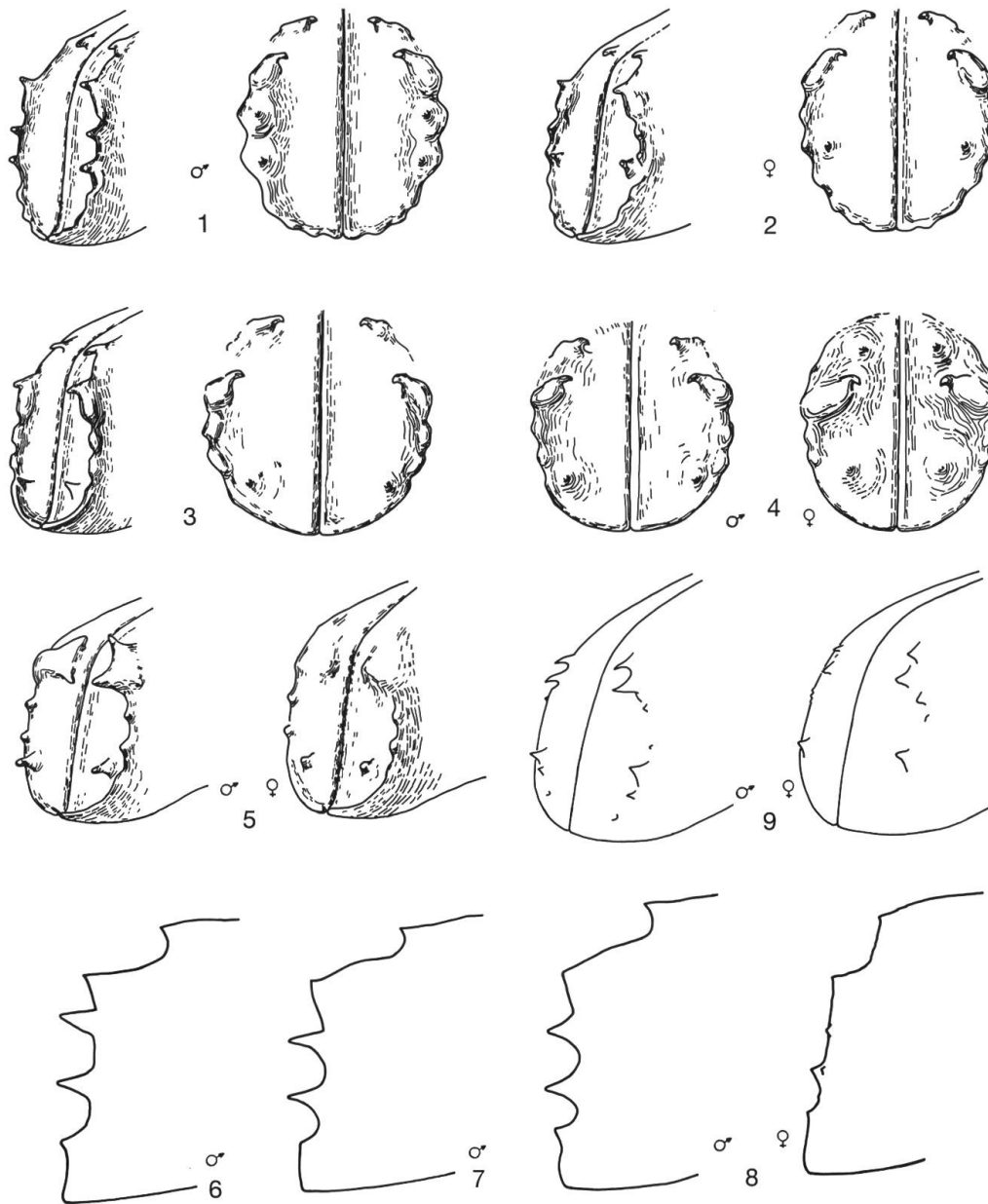
Taf.11: 1 *Xyleborus eurygraphus* (Ratzb.) ♀; 2,3 *X. pfeilii* (Ratzb.) ♂; 4 *Xylocleptes bispinus* (Duft.); 5,6 *Pityogenes quadridens* (Hart.) ♂,♀; 7,10 *Pityokteines vorontzowi* (Jak.) ♂,♀; 8 *P. curvidens* (Germ.) ♂; 9,11 *P. spinidens* (Reitt.) ♂,♀.

Abb.4 nach Balachowsky, 1949; 5,6 nach Spessivtseff, 1925; 10,11 nach Nunberg, 1954; 1-3,7-9 orig. M. Knízek



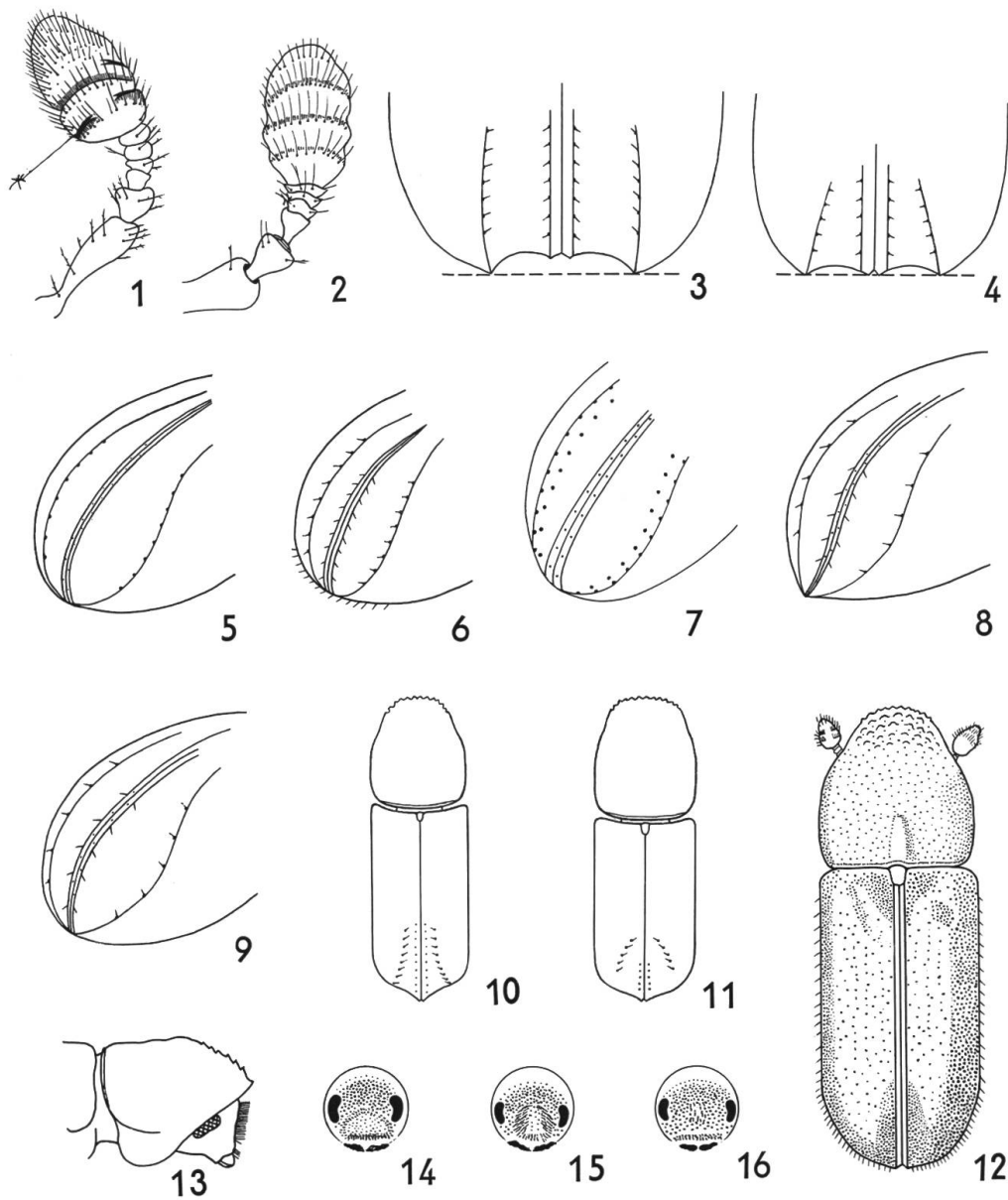
Taf.12: 1 *Ips sexdentatus* (Börn.); 2,7 *I. cembrae* Heer; 3,4 *I. acuminatus* (Gyll.) ♂, ♀; 5 *I. duplicatus* (Sahlb.); 6 *I. amitinus* (Eichh.); 8 *Orthotomicus proximus* (Eichh.); 9 *O. laricis* (F.).

Abb.5,8 nach Nunberg, 1954; 6,7,9 nach Balachowsky, 1949; 1-4 orig. M. Knízek



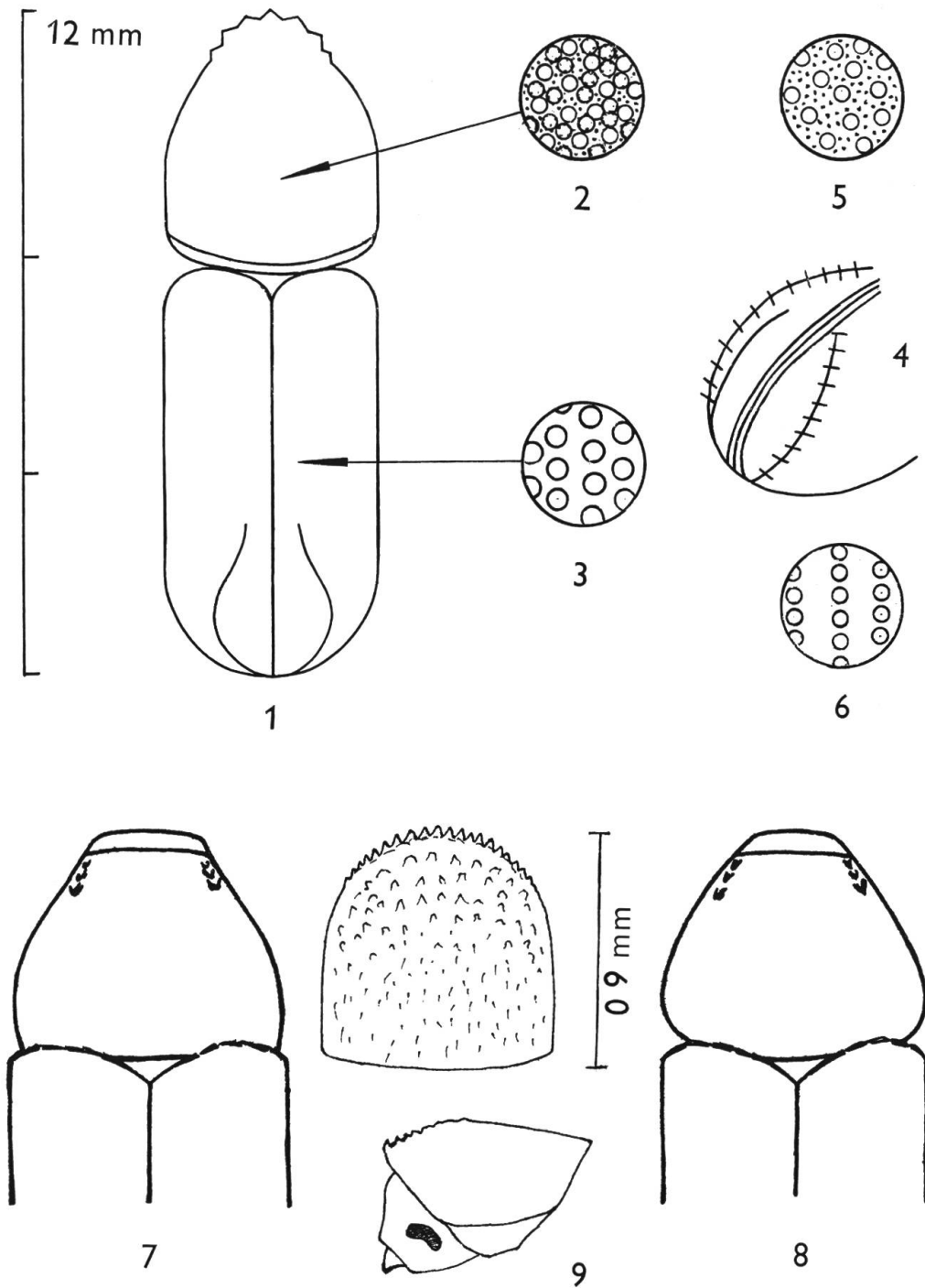
Taf.13: 1,2 *Orthotomicus proximus* (Eichh.) ♂,♀; 3 *O. laricis* (F.); 4 *O. suturalis* (Gyll.) ♂,♀; 5 *O. longicollis* (Gyll.) ♂,♀; 6 *O. tridentatus* (Egg.) ♂; 7 *O. robustus* (Knotek) ♂; 8 *O. erosus* (Woll.) ♂,♀; 9 *O. starki* Spess. ♂,♀.

Abb.1-5 nach Spessivtseff, 1925; 9 nach Spessivtseff, 1926; 6-8 orig. M. Knízek



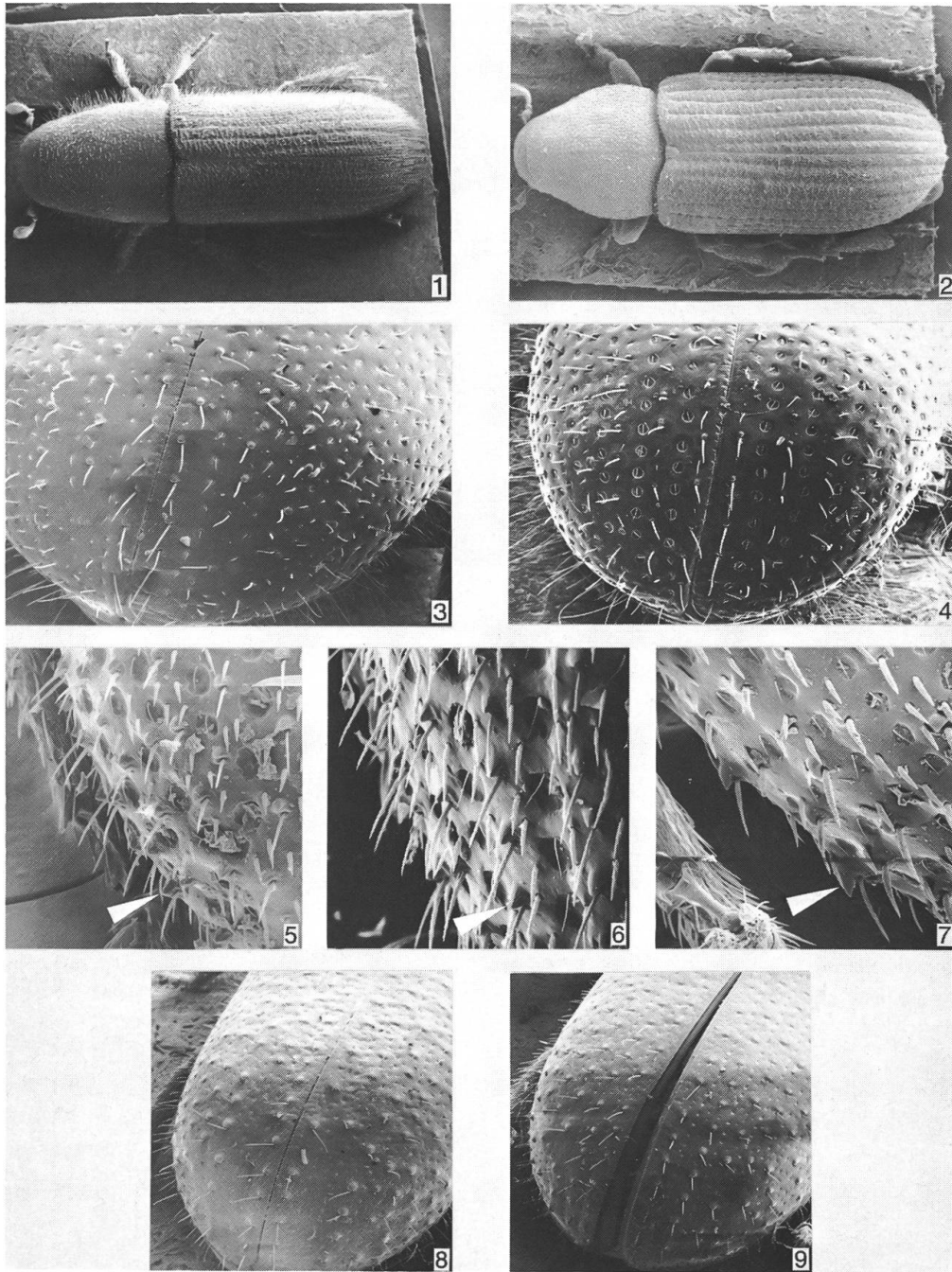
Taf.14: 1 *Pityophthorus* sp.; 2 *Myeloborus* sp.; 3 *Pityophthorus knoteki* Reitt.; 4,9 *P. lichtensteinii* (Ratzb.); 5 *P. glabratus* Eichh.; 6 *P. pubescens* (Marsh.); 7 *P. mauretanicus* Peyer.; 8,11,13 *P. pityographus pityographus* (Ratzb.) ♀; 10 *P. exsculptus* (Ratzb.); 12 *P. morosovi* Spess.; 14 *P. buyssoni angerei* Pfeff. ♀; 15,16 *P. glabratus* Eichh. ♀.

Abb.1-16 nach Pfeffer, 1976



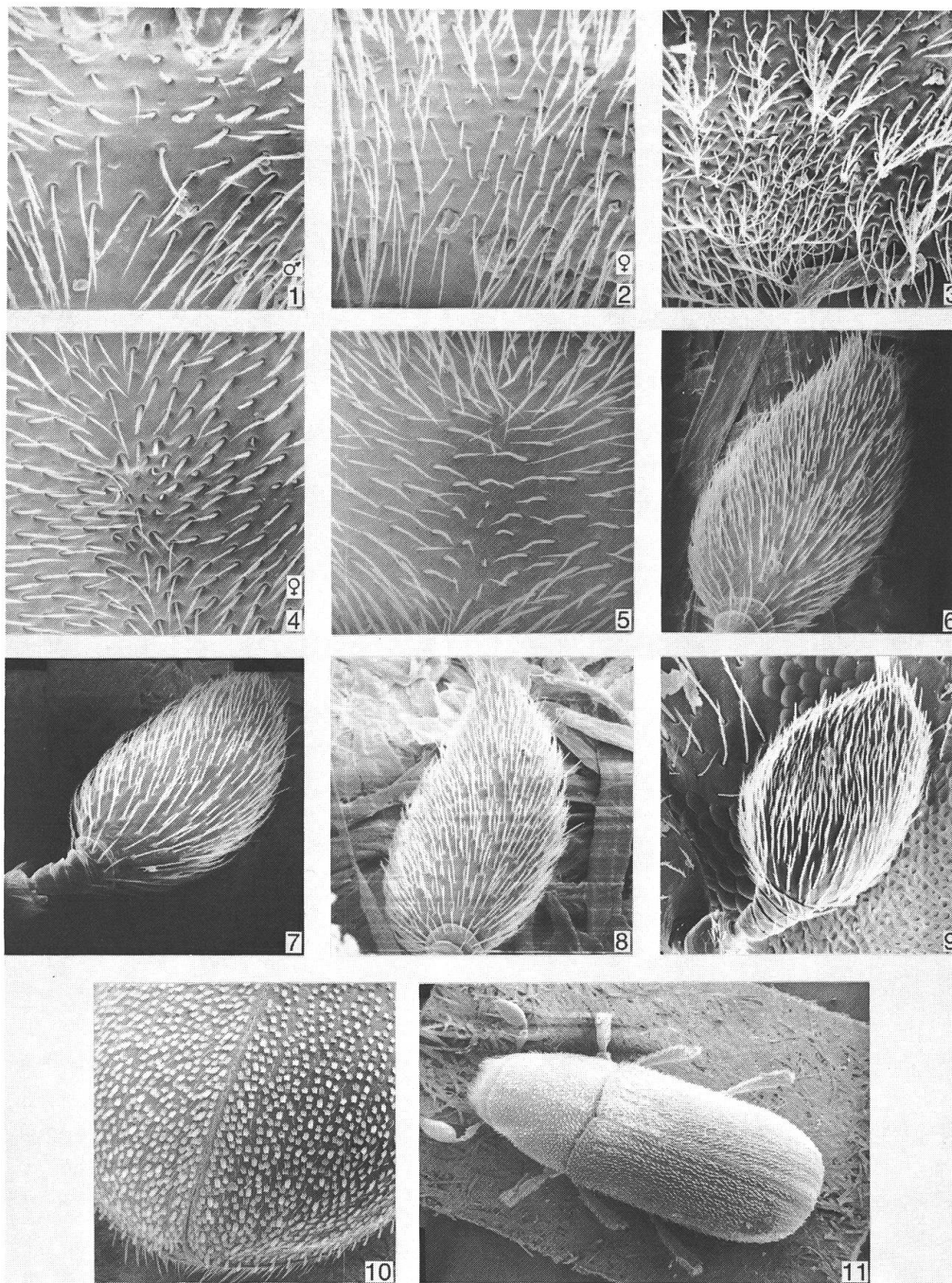
Taf.15: 1–3 *Pityophthorus pinsapo* Pfeff.; 4–6 *P. pubescens* (Marsh.); 7 *Phloeophthorus hercegovinensis* Seitn.; 8 *P. rhododactylus rhododactylus* (Marsh.); 9 *Saliciphilus machnovskyi* (Sokan.).

Abb.1–8 nach Pfeffer, 1982; 9 nach Pfeffer, 1985



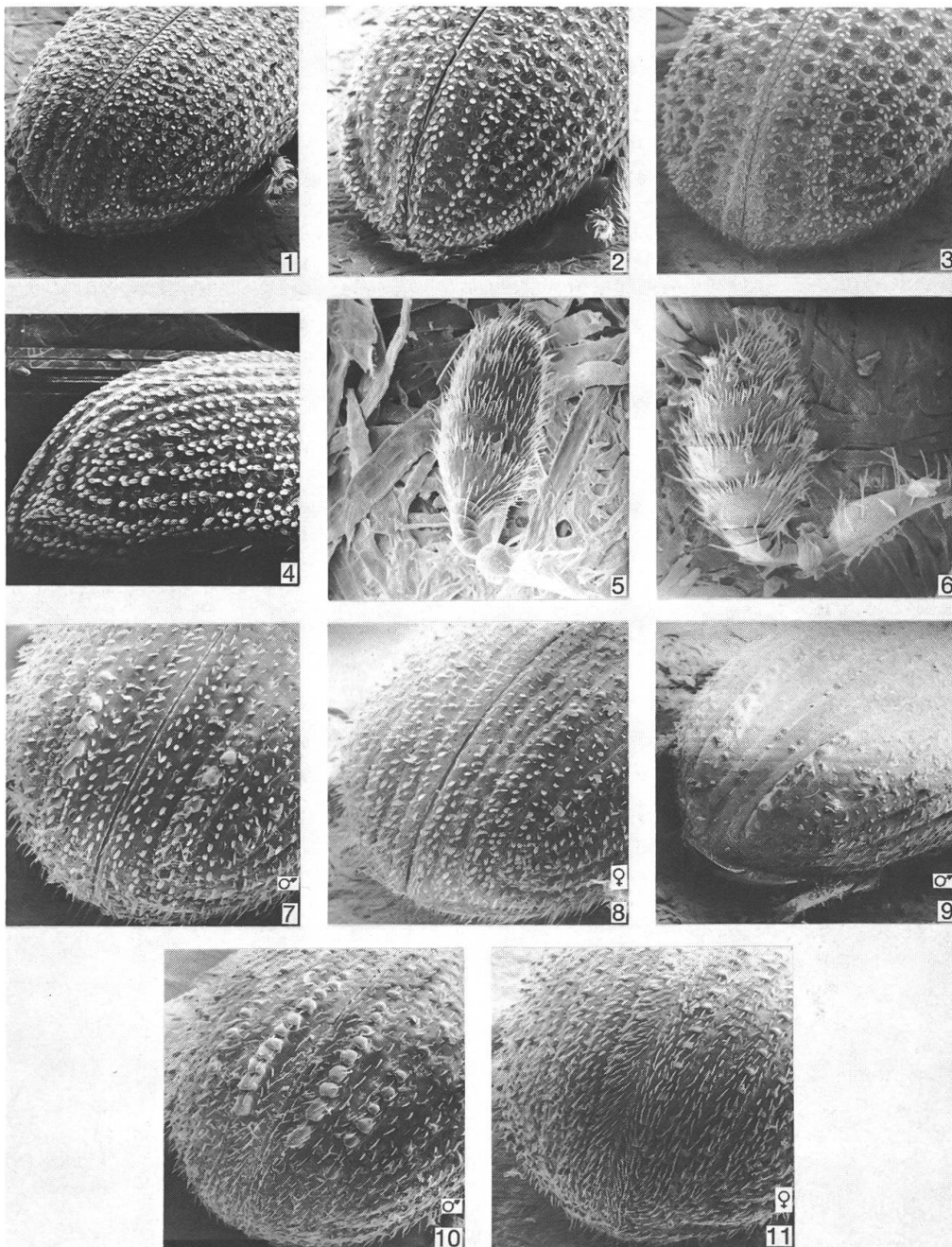
Taf.16: 1 *Hylurgus ligniperda* (F.); 2 *Hylurgops glabratus* (Zett.); 3 *Dryocoetes hectographus* Reitt.; 4 *D. autographus* (Ratzb.); 5 *Hylastinus obscurus* (Marsh.); 6 *H. croaticus* Fuchs; 7 *H. fankhauseri* Reitt.; 8 *Tomicus piniperda* (L.); 9 *T. minor* (Hart.).

Orig. M. Knízek



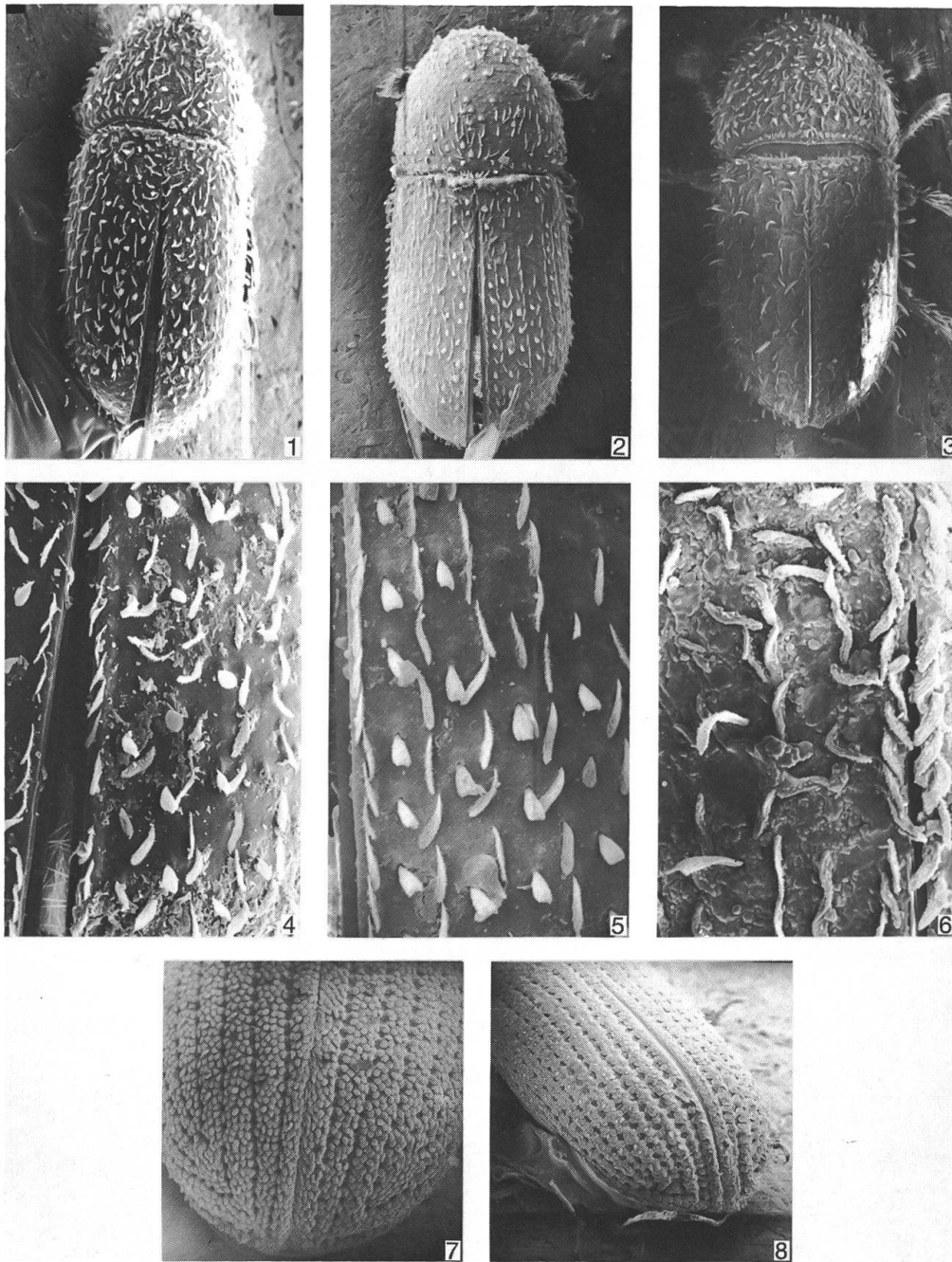
Taf.17: 1,2,6 *Polygraphus poligraphus* (L.) ♂,♀; 3,9 *P. subopacus* Thoms.; 4,7,10 *P. punctifrons* Thoms. ♀; 5,8,11 *P. grandiclava* Thoms.

Orig. M. Knízek



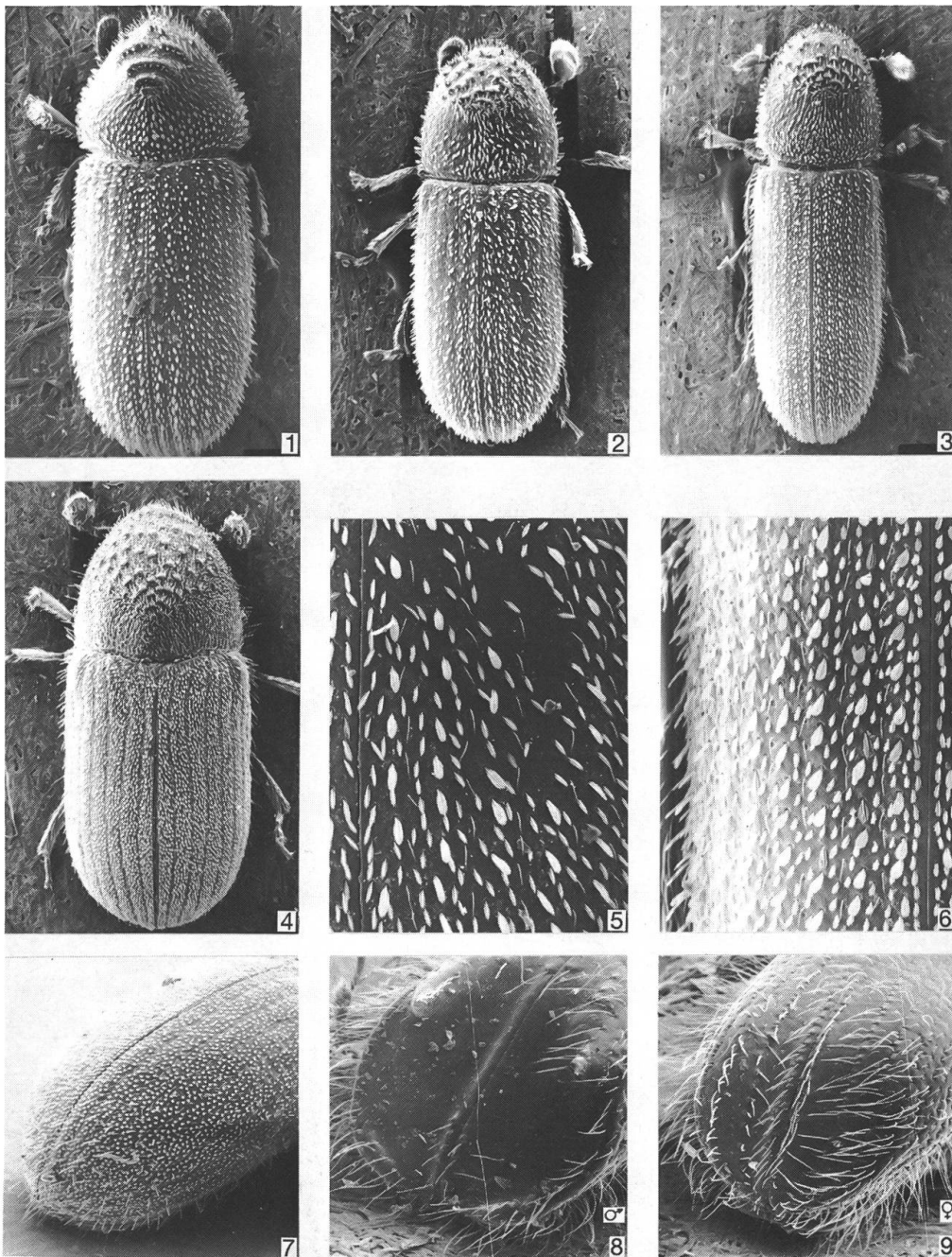
Taf.18: 1 *Carphoborus minimus* (F.); 2 *C. pini* Eichh. ♂; 3 *C. henscheli* Reitt.; 4 *C. bonnairei* Bris.; 5,7,8 *Phloeosinus thujae thujae* (Perr.) ♂,♀; 6,9 *P. thujae serrifer* Wichm.; 10,11 *P. aubei* (Perr.) ♂,♀.

Orig. M. Knízek



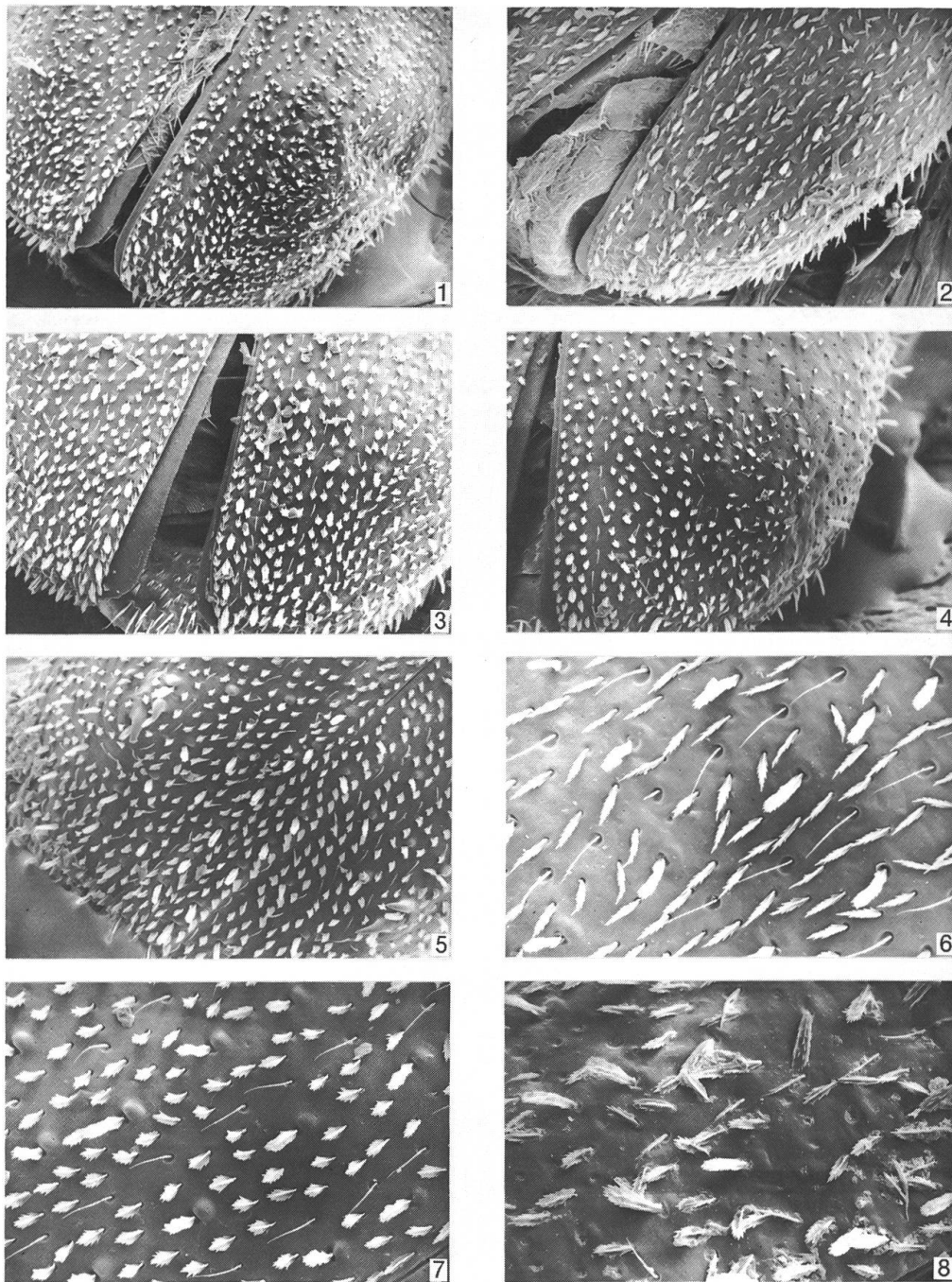
Taf.19: 1,4 *Liparthrum genistae georgi* Knot.; 2,5 *L. genistae genistae* (Aubé); 3,6 *Hypoborus ficus* Er.; 7 *Pteleobius vittatus* (F.); 8 *P. kraatzii* (Eichh.).

Orig. M. Knízek



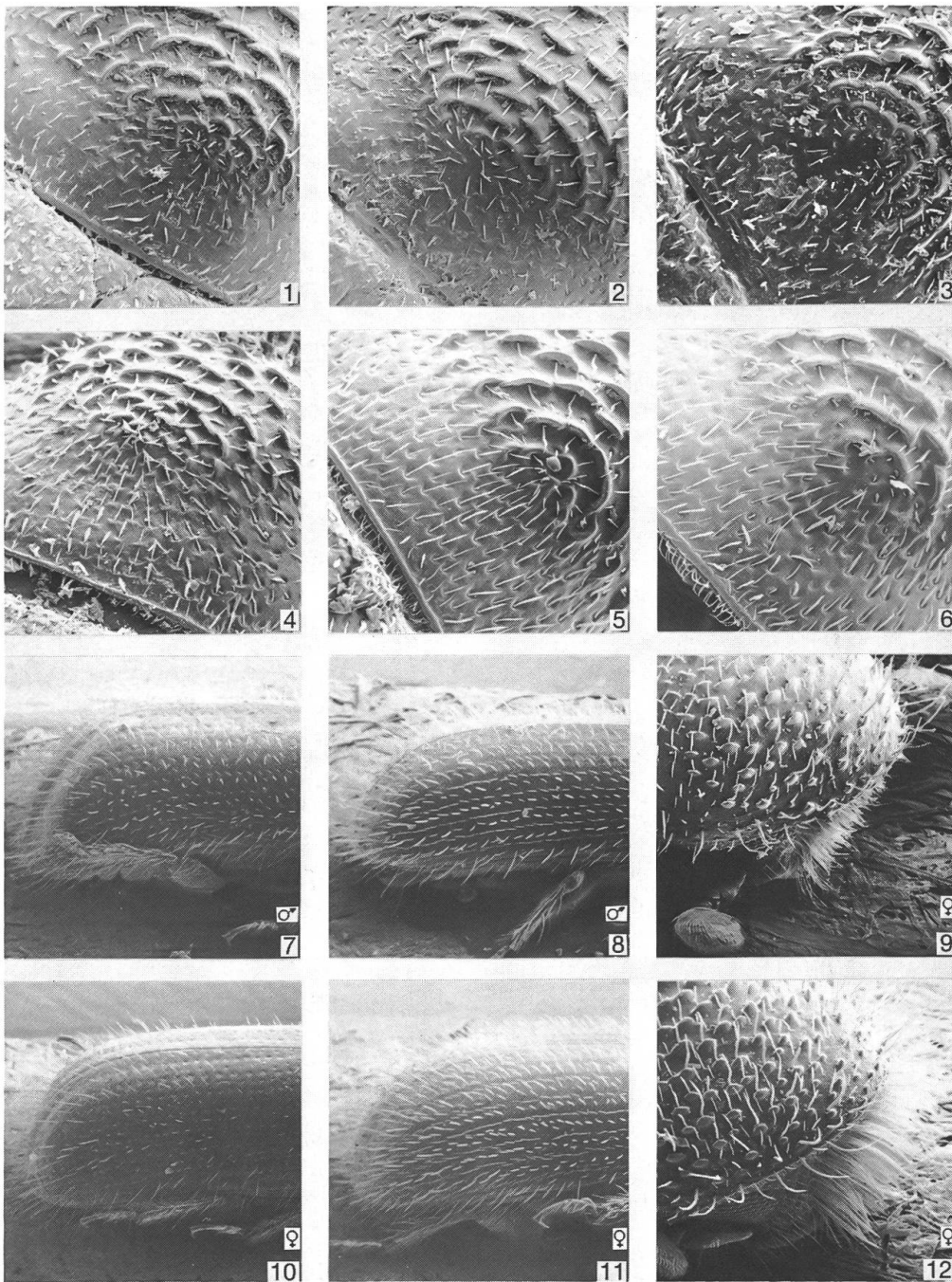
Taf.20: 1 *Ernoporos tiliae* (Panz.); 2,5 *Ernoporicus caucasicus* (Lind.); 3,6 *E. fagi* (F.);
4 *Cryphalus intermedius* Ferr.; 7 *C. piceae* (Ratzb.); 8,9 *Xylocleptes bispinus* (Duftschm.)
♂, ♀.

Orig. M. Knízek



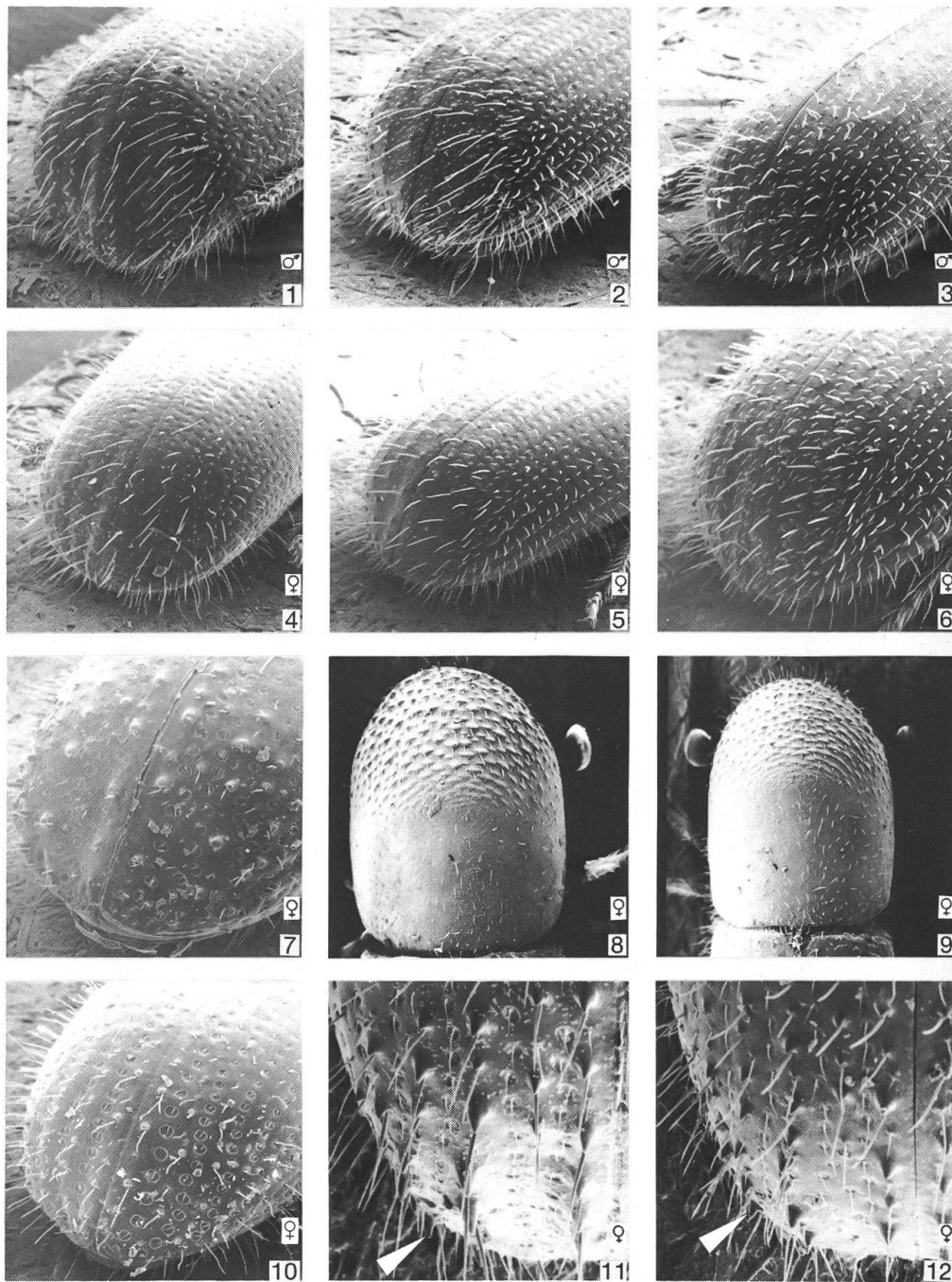
Taf.21: 1 *Trypophloeus aperatus asperatus* (Gyll.); 2 *T. asperatus spiculatus* Egg.; 3 *T. asperatus grothi* Hag.; 4 *T. rybinskii rybinskii* Reitt.; 5,7 *T. bispinulus* Egg.; 6 *T. granulatus* (Ratzb.); 8 *T. tremulae* Stark.

Orig. M. Knízek



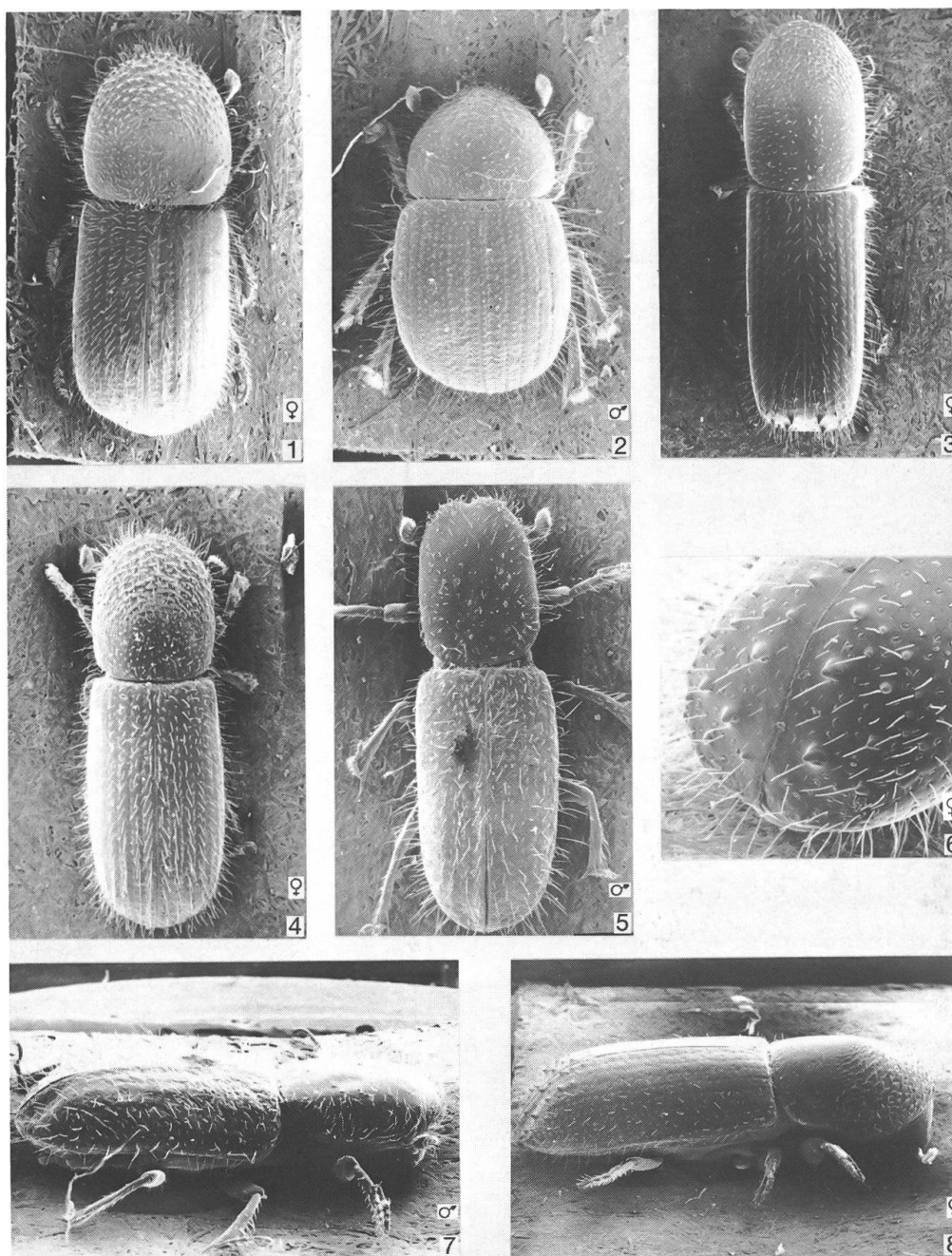
Taf.22: 1 *Trypophloeus asperatus asperatus* (Gyll.); 2 *T. asperatus spiculatus* Egg.; 3 *T. asperatus grothi* Hag.; 4 *T. rybinskii rybinskii* Reitt.; 5 *T. bispinulus* Egg.; 6 *T. granulatus* (Ratzb.); 7,9,10 *Taphrorychus bicolor* (Hbst.) ♂,♀; 8,11 *Taphrocoetes hirtellus* (Eichh.) ♂,♀; 12 *Taphrorychus villifrons* (Duf.) ♀.

Orig. M. Knízek



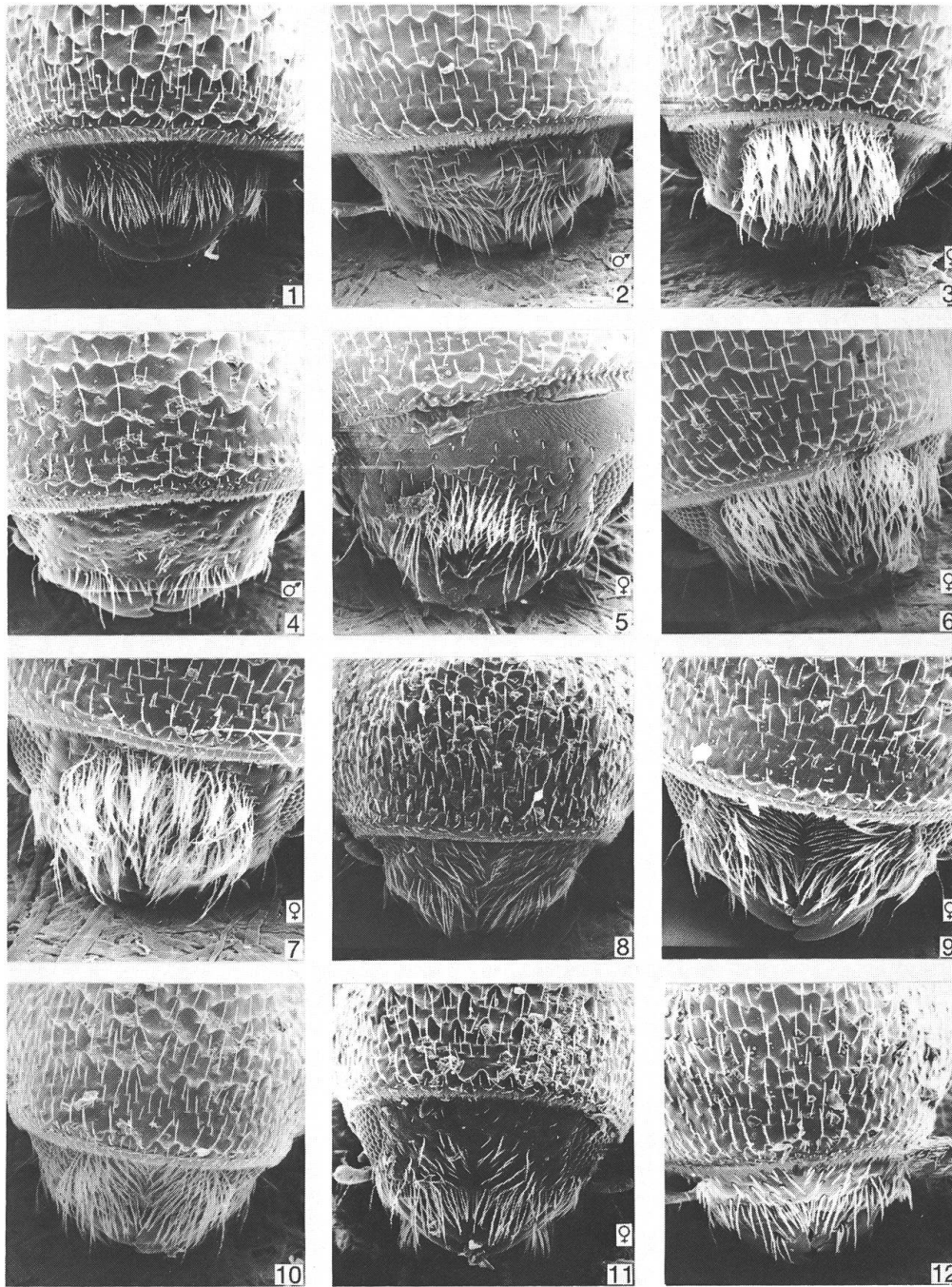
Taf.23: 1,4 *Taphrocoetes bicolor* (Hbst.) ♂,♀; 2,5 *T. villifrons* (Duf.) ♂,♀; 3,6 *Taphrocoetes hirtellus* (Eichh.) ♂,♀; 7 *Xyleborus pfeilii* (Ratzb.) ♀; 8,11 *X. alni* Nijj. ♀; 9,12 *X. saxesenii* (Ratzb.) ♀; 10 *X. dryographus* (Ratzb.) ♀.

Orig. M. Knízek



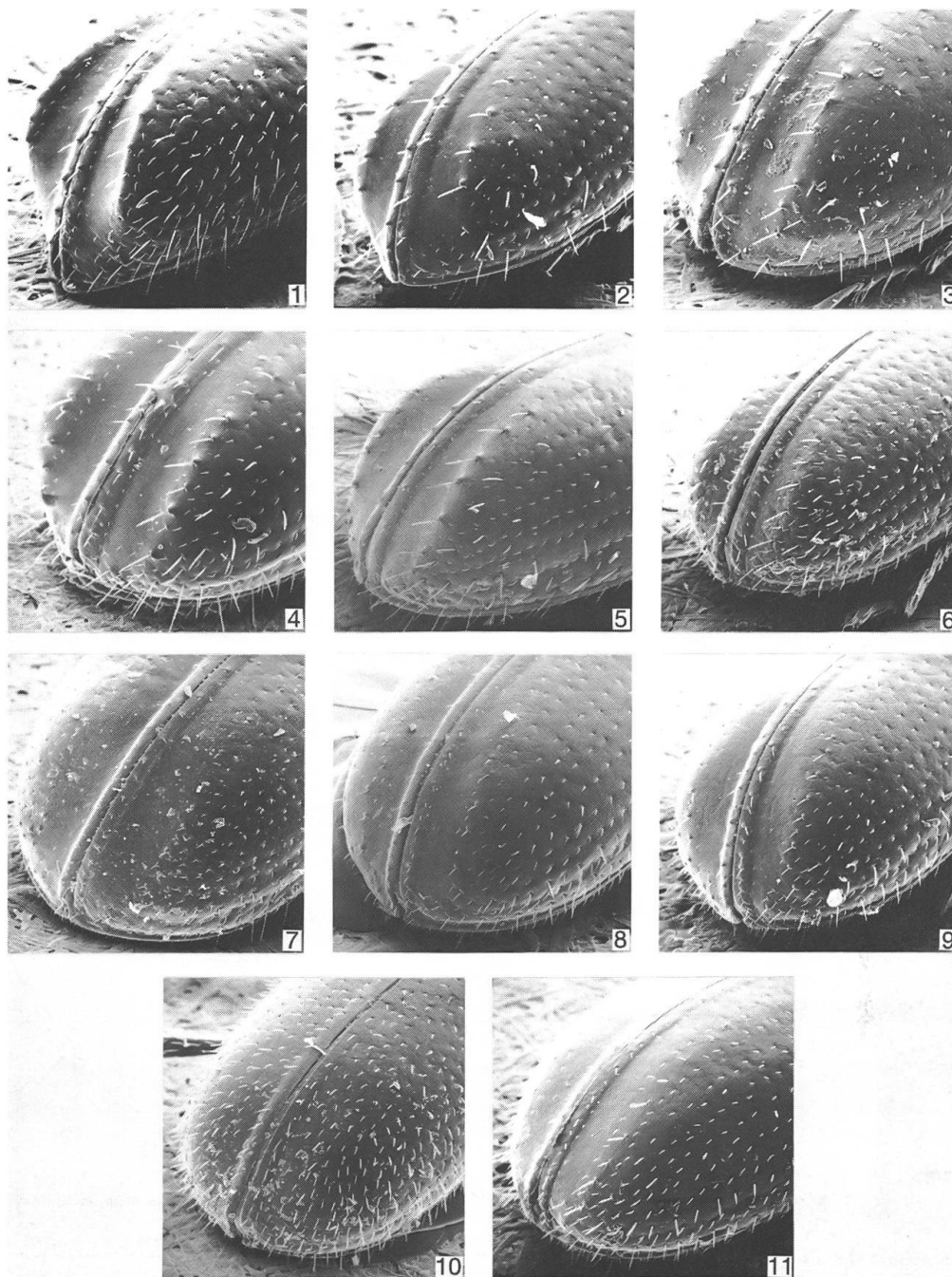
Taf.24: 1,2 *Xyleborus dispar* (F.) ♂,♀; 3,6 *X. monographus* (F.) ♀; 4,5,7 *X. cryptographus* (Ratzb.) ♂,♀; 8 *X. pfeilii* (Ratzb.) ♀.

Orig. M. Knízek



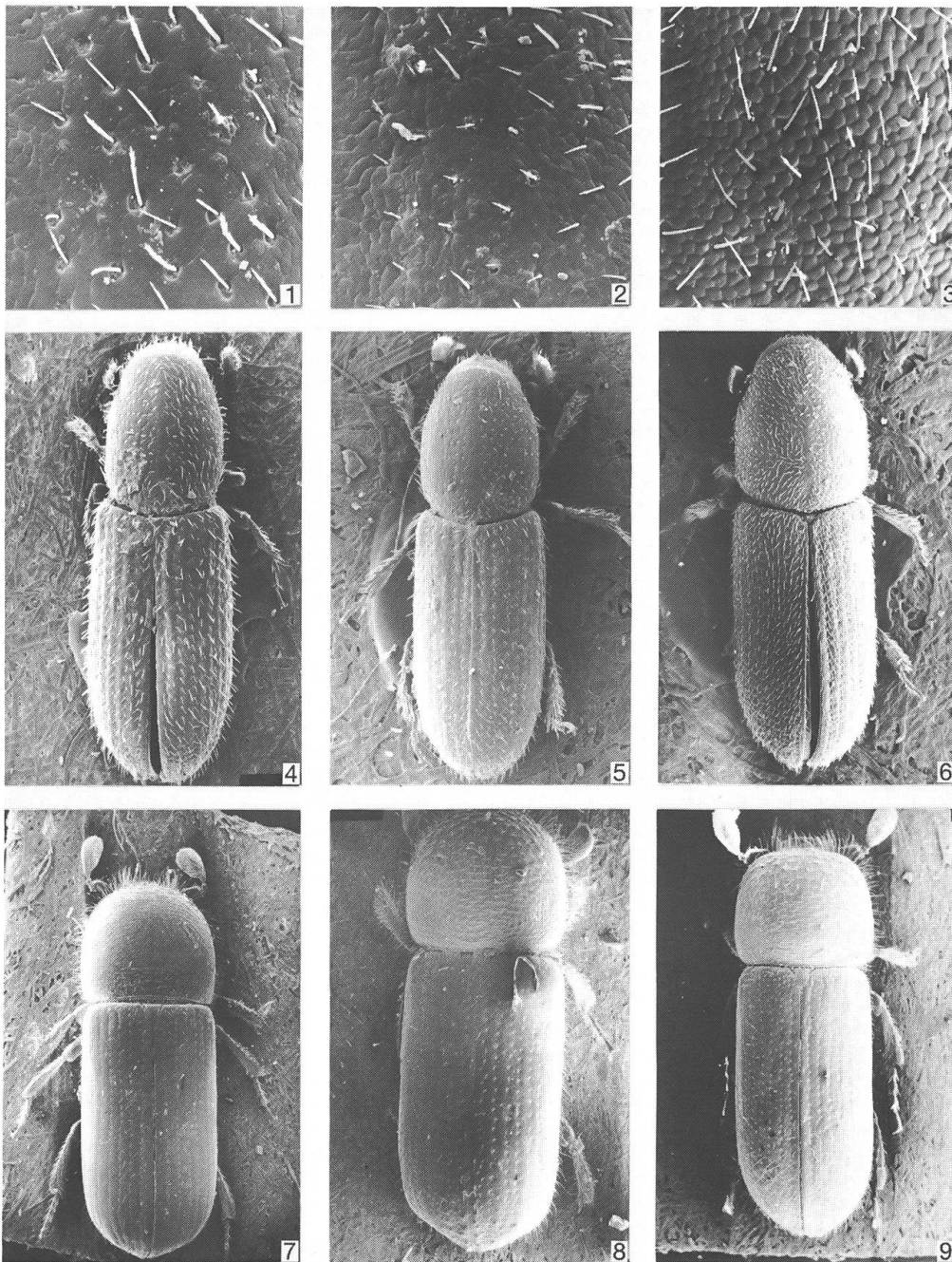
Taf.25: 1 *Pityophthorus exsculptus* (Ratzb.); 2,3 *P. pityographus pityographus* (Ratzb.) ♂, ♀; 4,5 *P. micrographus* (L.) ♂, ♀; 6 *P. lichtensteinii* (Ratzb.) ♀; 7 *P. knoteki* Reitt. ♀; 8 *P. pubescens* (Marsh.) ♀; 9 *P. glabratus* Eichh. ♀; 10 *P. balcanicus* Pfeff. ♀; 11 *P. buysoni angeri* Pfeff. ♀; 12 *P. henscheli* Seitn. ♀.

Orig. M. Knízek



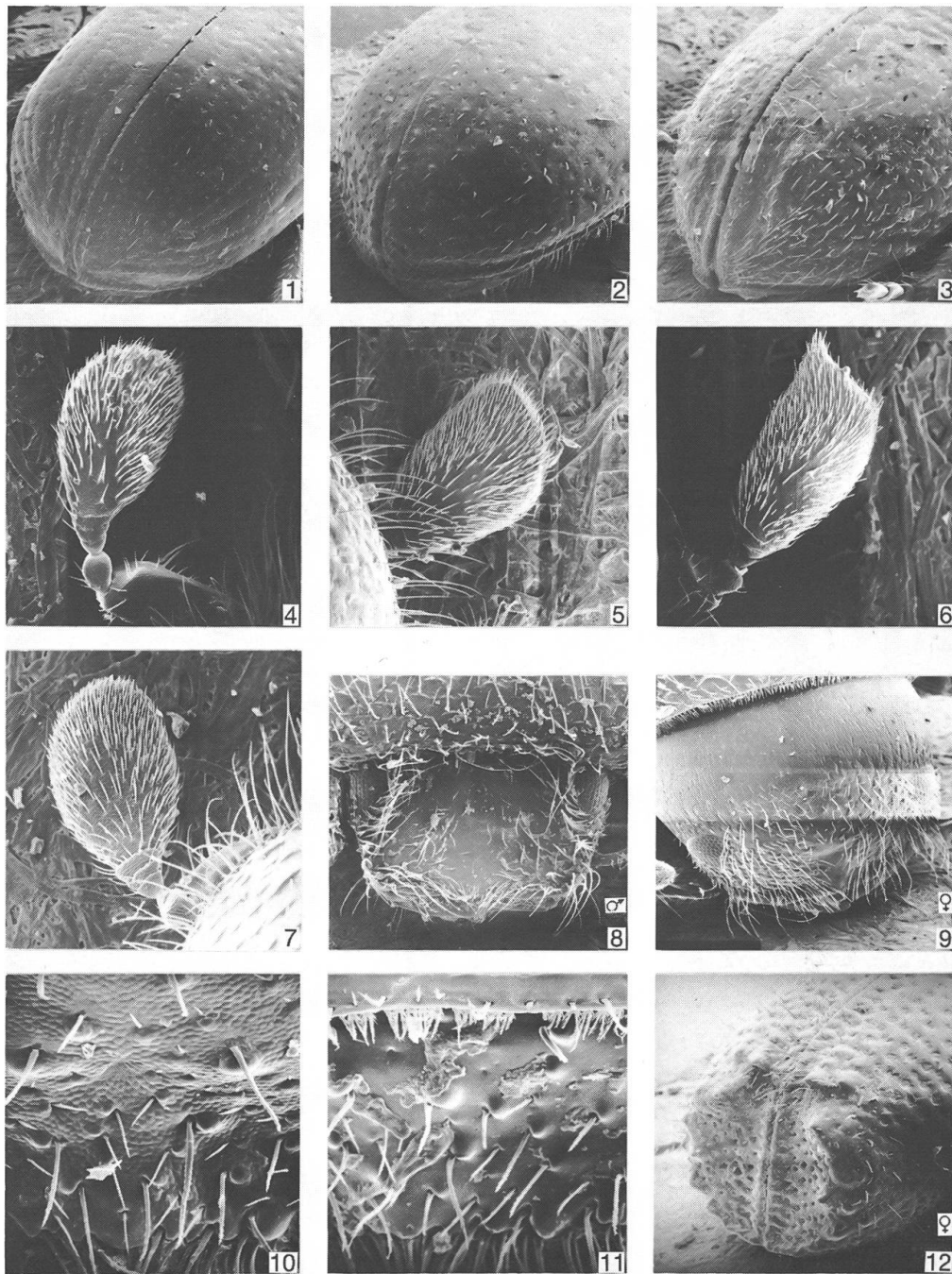
Taf.26: 1 *Pityophthorus exsculptus* (Ratzb.); 2 *P. pityographus pityographus* (Ratzb.); 3 *P. micrographus* (L.); 4 *P. lichtensteinii* (Ratzb.); 5 *P. knoteki* Reitt.; 6 *P. pubescens* (Marsh.); 7 *P. glabratus* Eichh.; 8 *P. balcanicus* Pfeff.; 9 *P. buyssoni angerei* Pfeff.; 10 *P. carniolicus* Wichm.; 11 *P. henscheli* Seitn.

Orig. M. Knízek



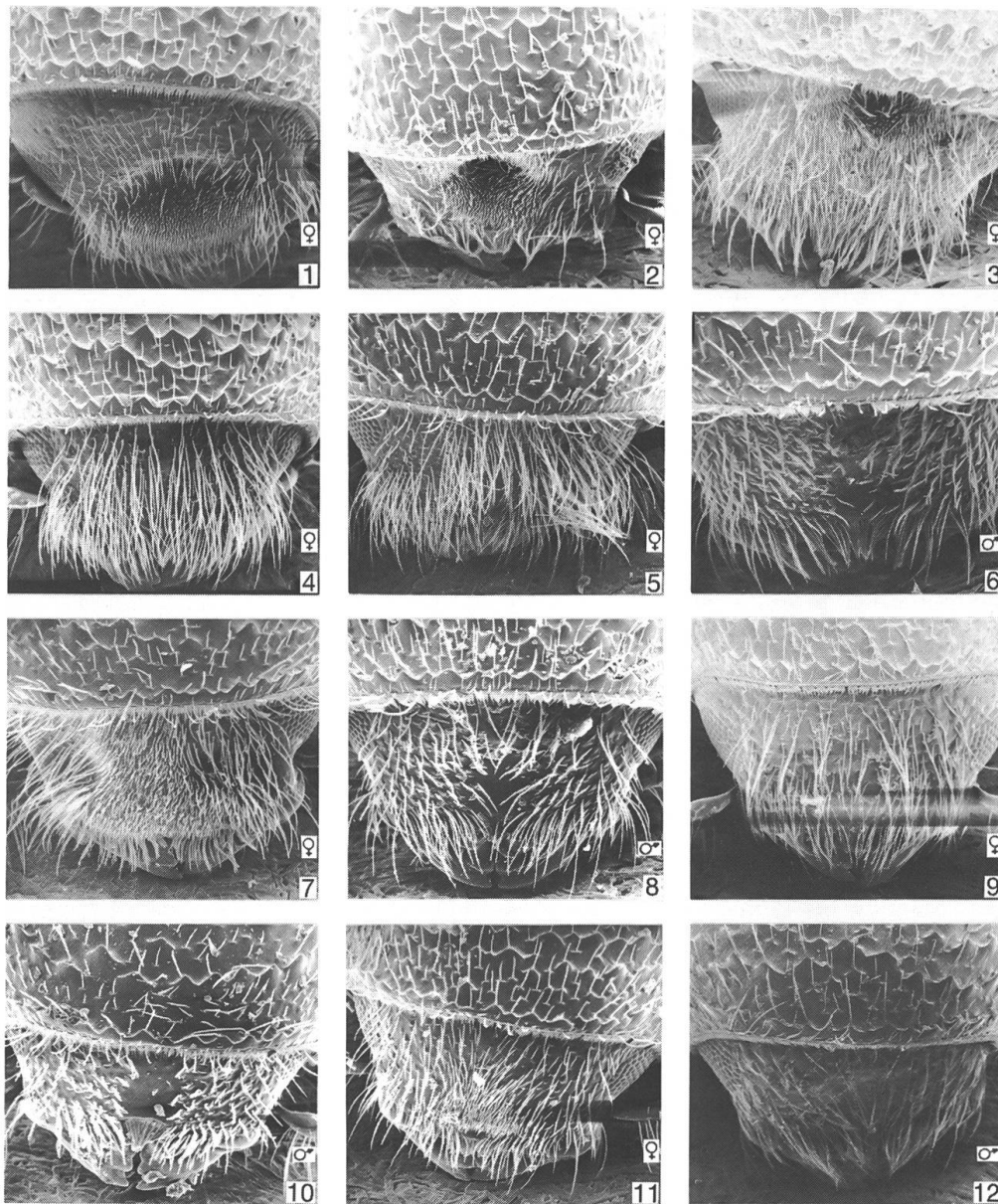
Taf.27: 1,4 *Crypturgus hispidulus* Thoms.; 2,5 *C. pusillus* (Gyll.); 3,6 *C. cinereus* (Hbst.); 7 *Xyloterus lineatus* (Ol.); 8 *X. signatus* (F.); 9 *X. domesticus* (L.).

Orig. M. Knízek



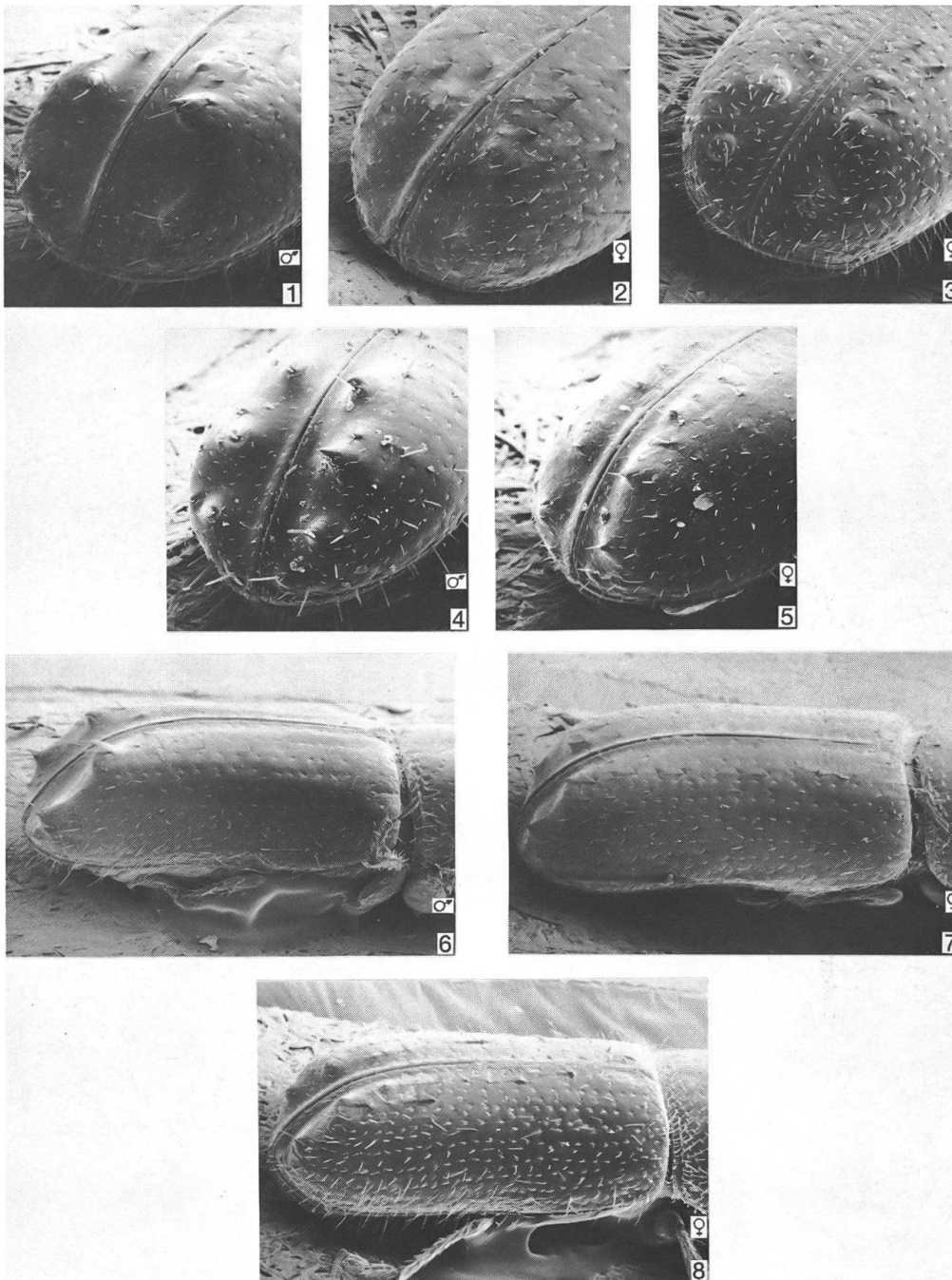
Taf.28: 1,4 *Xyloterus lineatus* (Ol.); 2,5 *X. signatus* (F.); 3,6 *X. domesticus* (L.); 7-9 *X. laeve* Egg. ♂, ♀; 10 *Orthotomicus laricis* (F.); 11,12 *O. proximus* (Eichh.) ♀.

Orig. M. Knízek

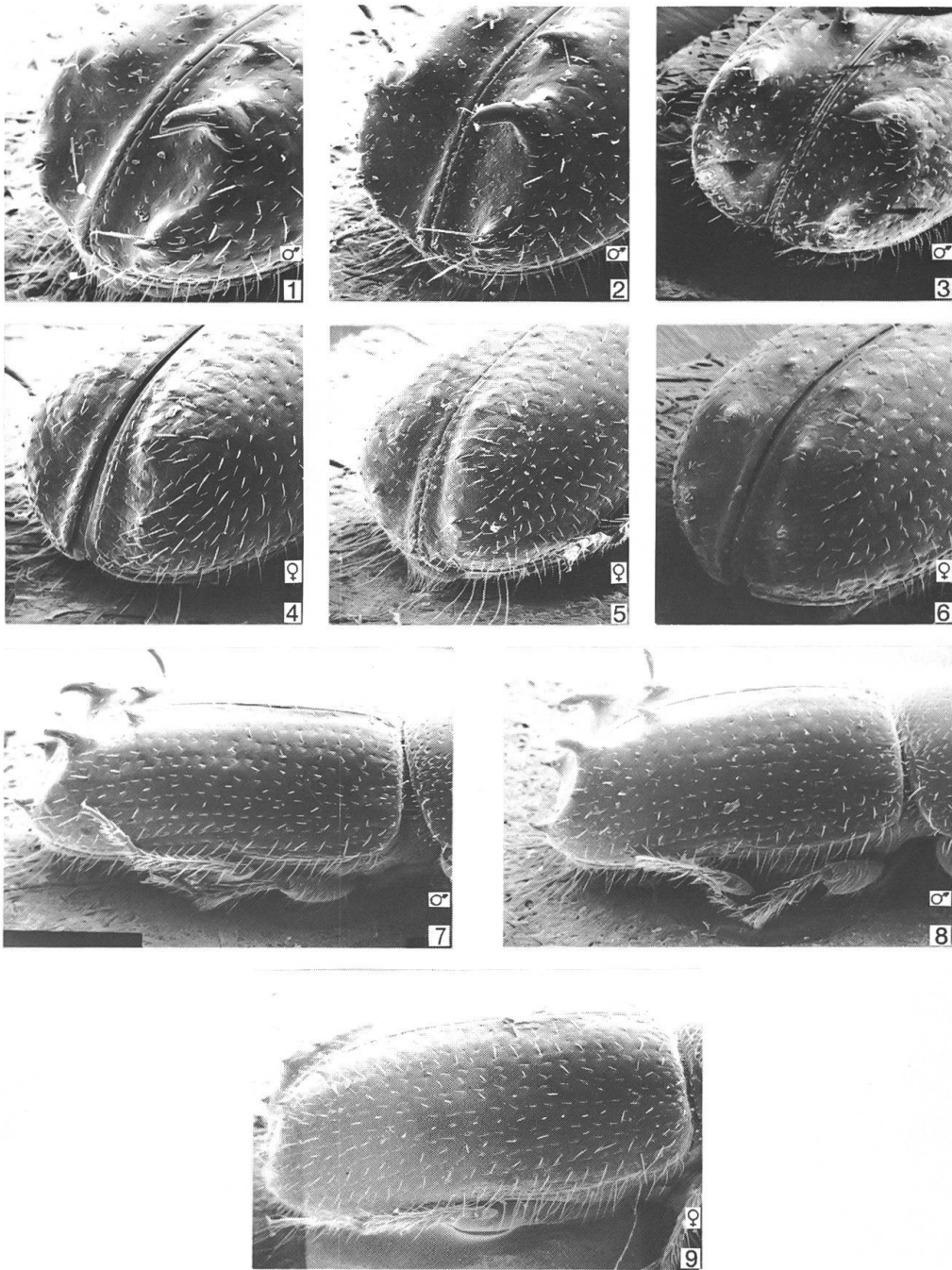


Taf.29: 1 *Pityogenes chalcographus* (L.) ♀; 2 *P. trepanatus* (Nördl.) ♀; 3,6 *P. porifrons* Egg. ♂, ♀; 4 *P. conjunctus* Reitt. ♀; 5,8 *P. bistridentatus* (Eichh.) ♀, ♂; 7,10 *P. calcaratus* (Eichh.) ♀, ♂; 9,12 *P. irkutensis irkutensis* Egg. ♂, ♀; 11 *P. bidentatus* (Hbst.) ♀.

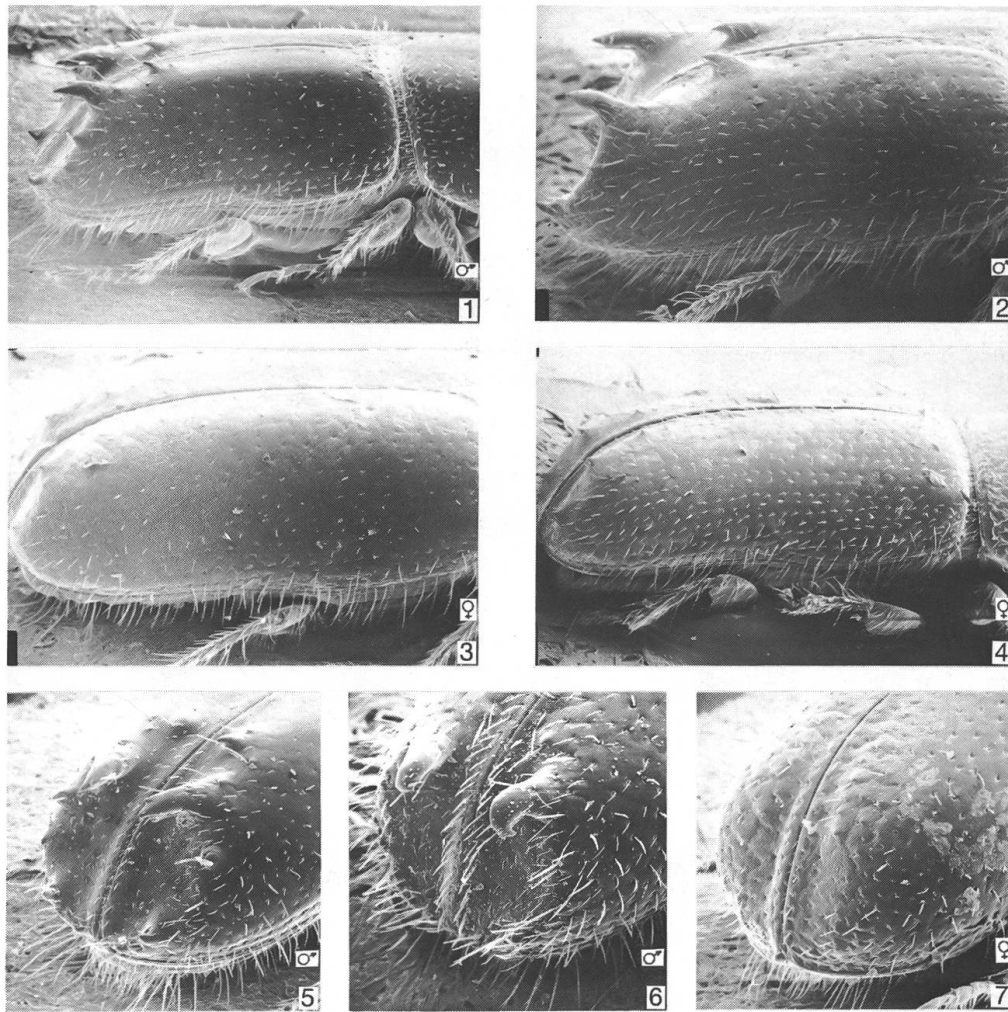
Orig. M. Knízek



Taf.30: 1,2,6,7 *Pityogenes irkutensis irkutensis* Egg. ♂,♀; 3,8 *P. trepanatus* (Nördl.) ♀;
 4,5 *P. chalcographus* (L.) ♂,♀.
 Orig. M. Knízek

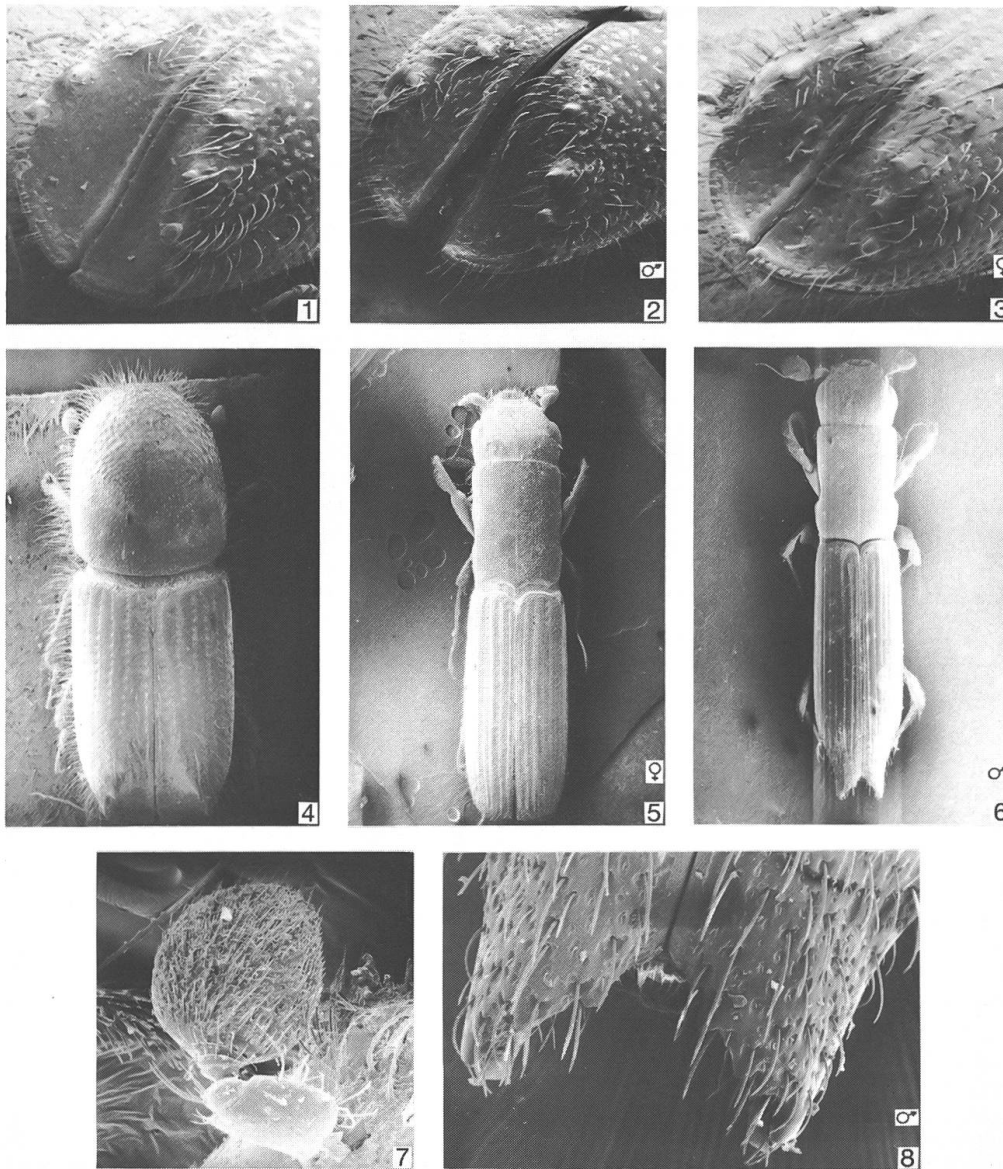


Taf.31: 1,4,7 *Pityogenes conjunctus* Reitt. ♂,♀; 2,5,8,9 *P. bistridentatus* (Eichh.) ♂,♀;
 3,6 *P. porifrons* Egg. ♂,♀.
 Orig. M. Knízek

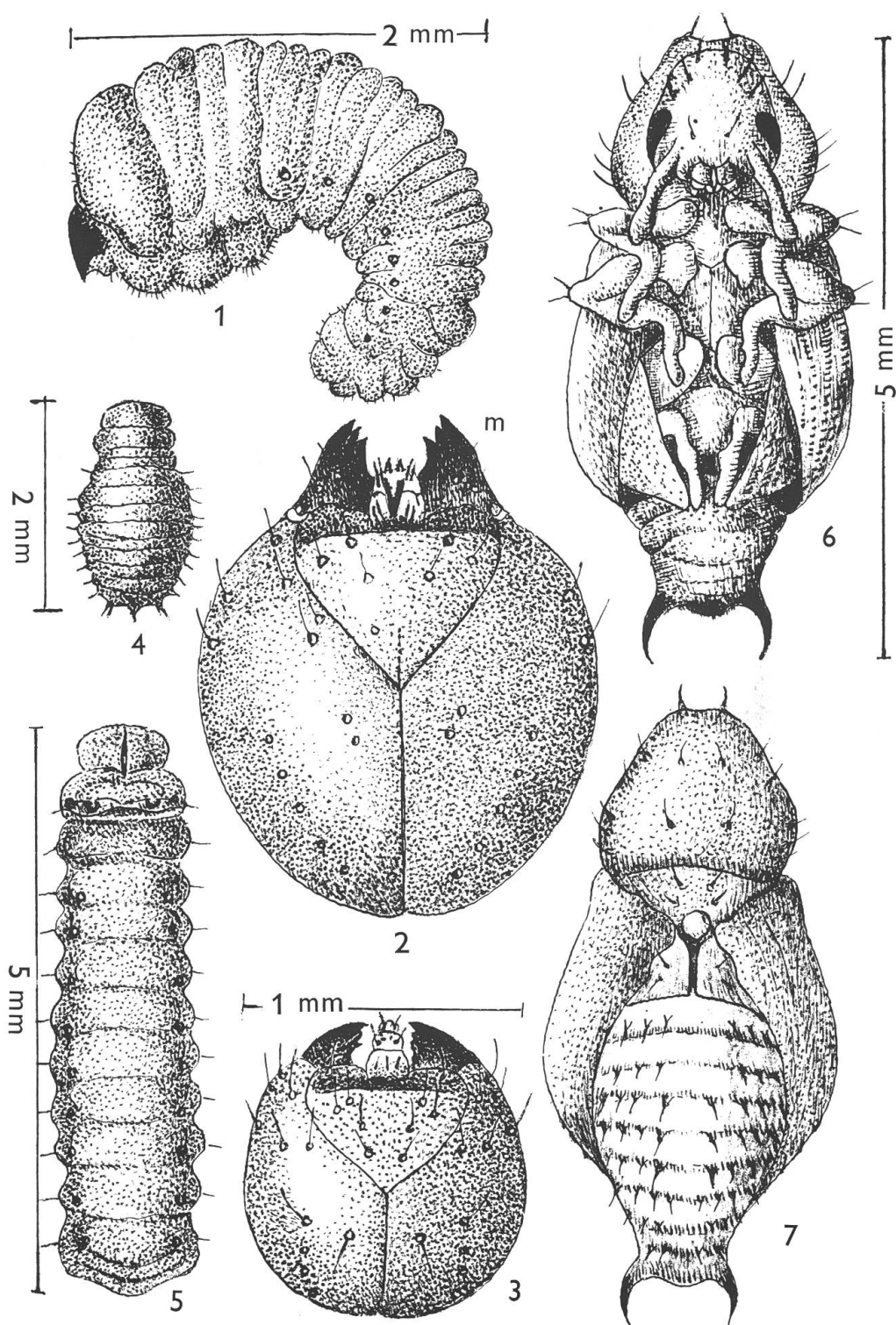


Taf.32: 1,3,5 *Pityogenes calcaratus* (Eichh.) ♂,♀; 2,4 *P. porifrons* Egg. ♂,♀; 6,7 *P. bidentatus* (Hbst.) ♂,♀.

Orig. M. Knízek

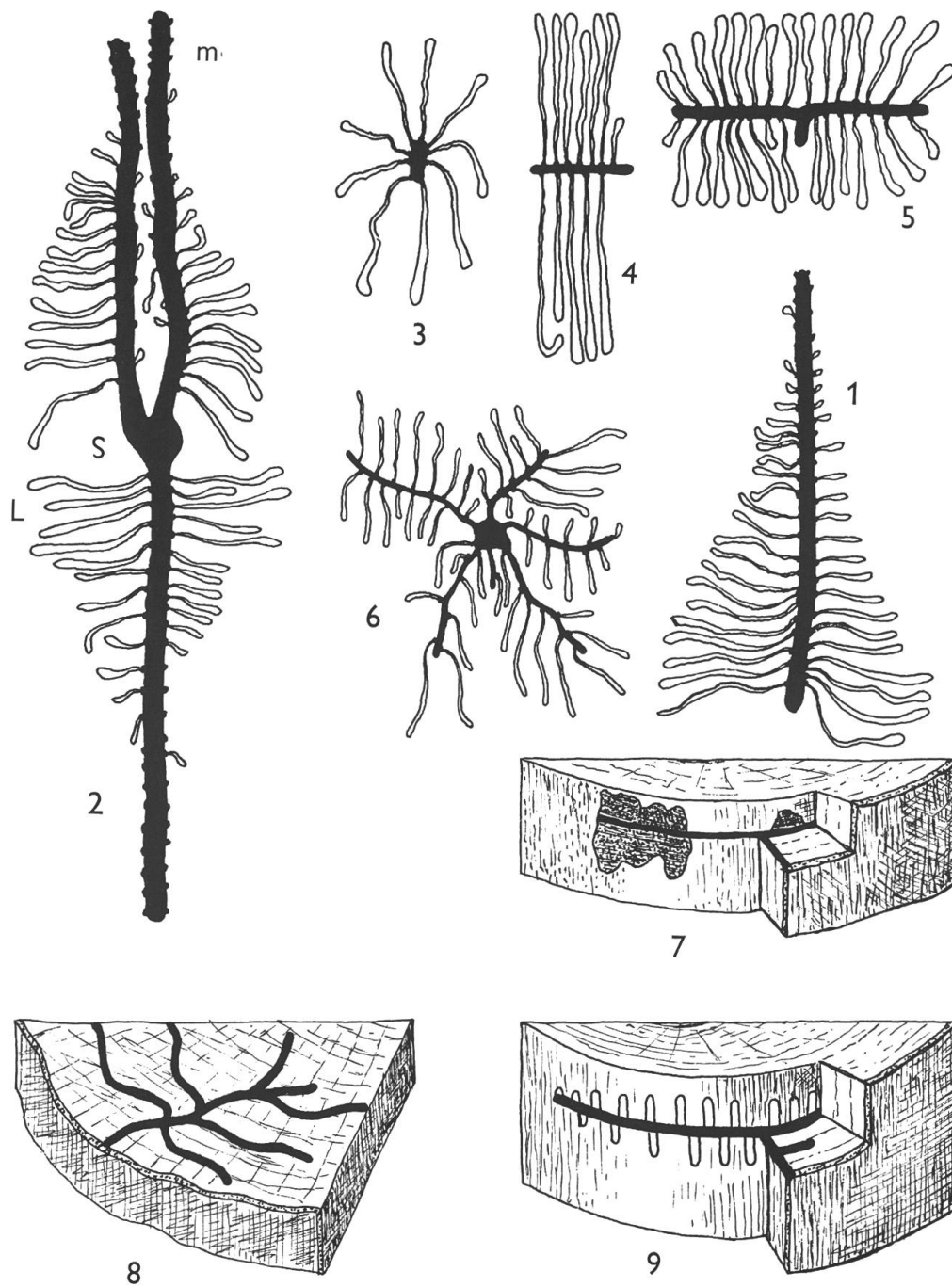


Taf.33: 1,4 *Ips typographus* (L.); 2,3 *I. duplicatus* (Sahlb.) ♂,♀; 5,7 *Platypus cylindrus* (F.); 6,8 *P. oxyurus* Duf.
 Orig. M. Knízek



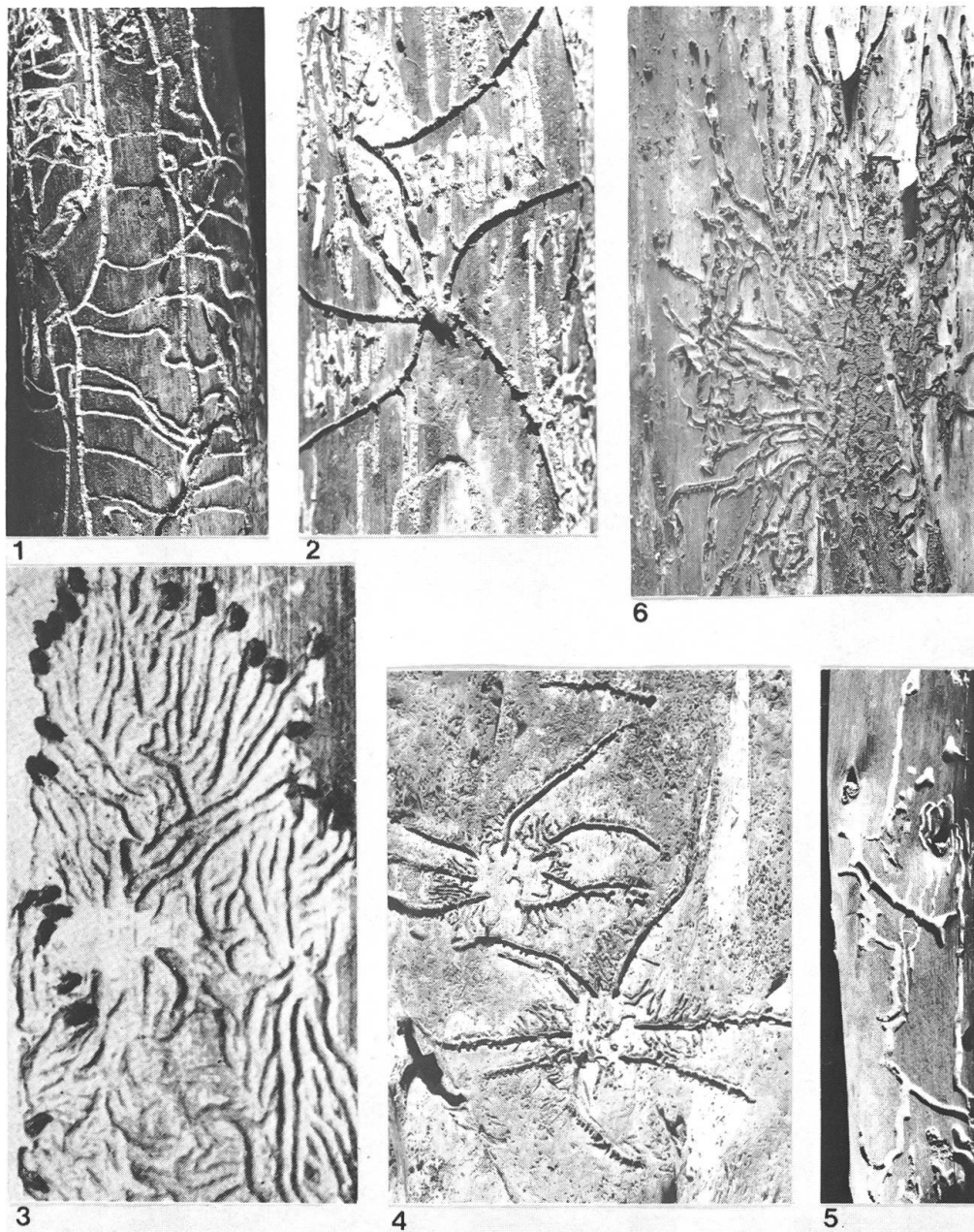
Taf.34: 1 Larve *Carphoborus* sp.; 2,3 Kopf der Larve (*Xyloterus* sp., *Ips* sp.); 4,5 Larve *Platypus cylindrus* (F.); 6,7 Puppe *Hylurgops* sp.

Abb. 1,6,7 nach Spessivtsev, 1928; 2,3 nach Lekander, 1968; 4,5 nach Sölner, 1930.



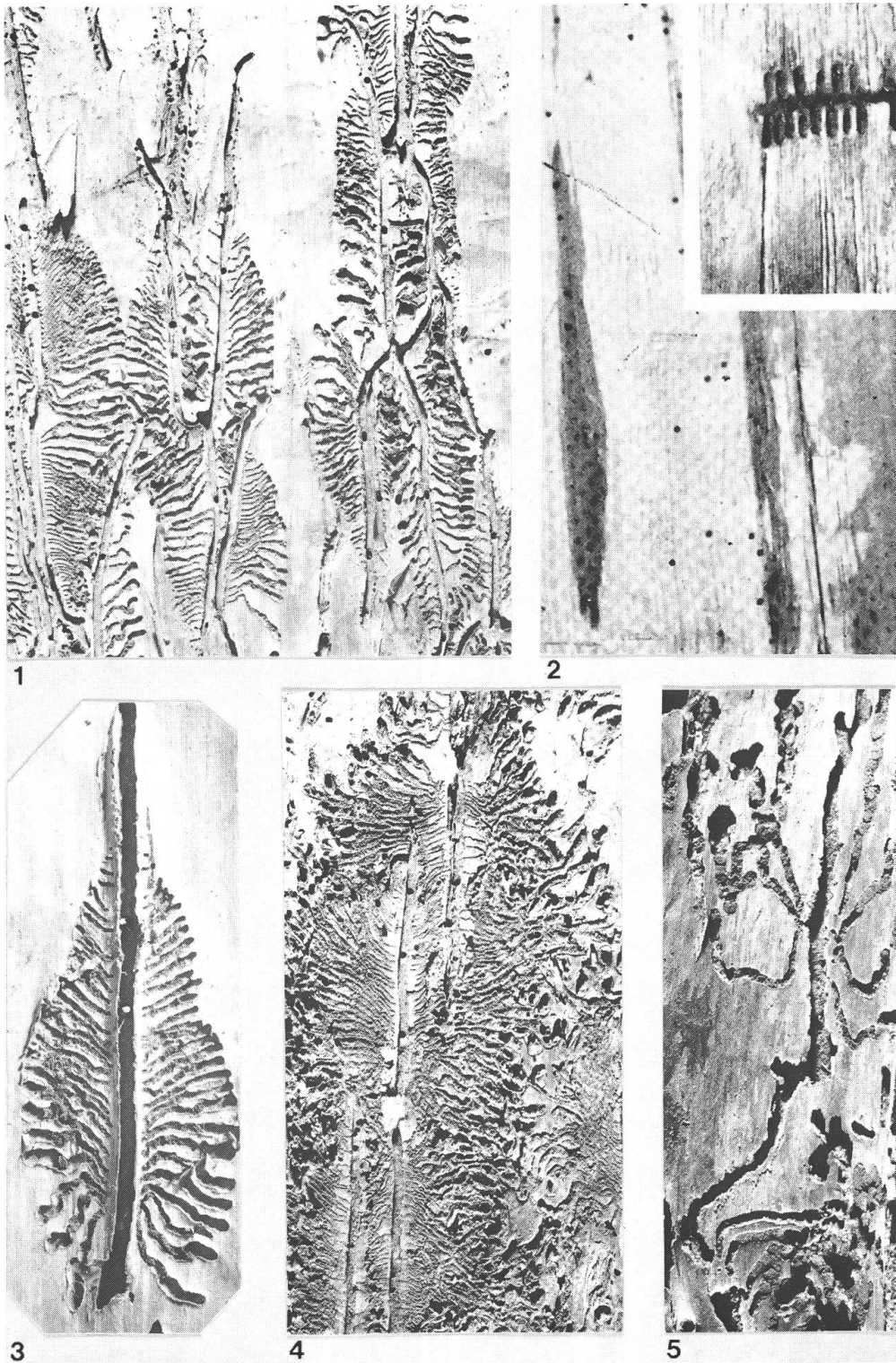
Taf.35: 1 Einarmiger Längsgang; 2 Dreiarmige Längsgänge; 3 Platzgang; 4 Einarmiger Quergang; 5 Zweiarmige Quergänge; 6 Stern gang; 7 Holzplatzgang; 8 Horizontale Gabelgänge; 9 Leiterränge.

Abb. 1,2 nach Pfeffer, 1989; 3-9 nach Nüsslin, 1913



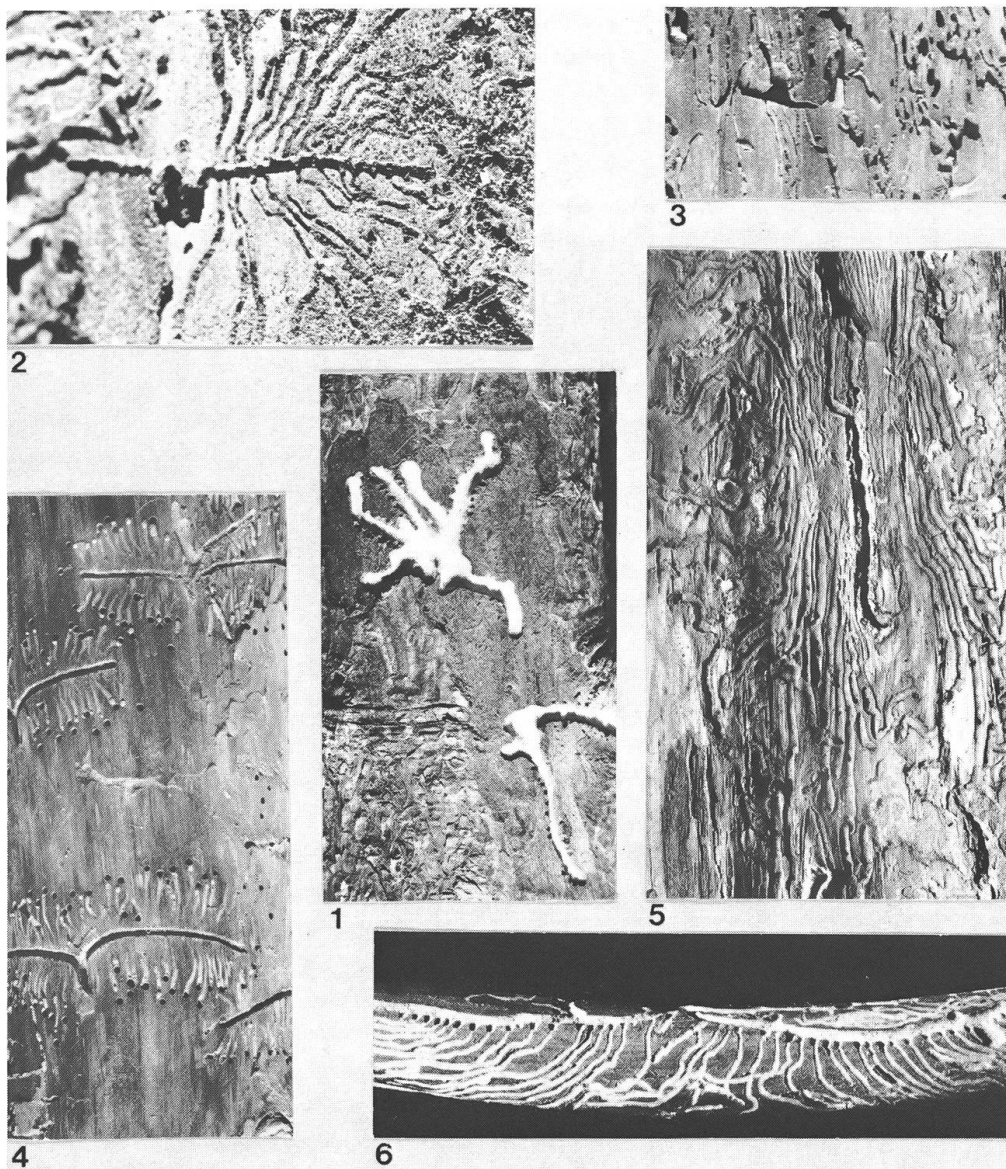
Taf.36: 1 *Pityophthorus exsculptus* (Ratzb.); 2 *P. pityographus pityographus* (Ratzb.); 3 *Hylurgops palliatus* (Gyll.), Reifungsfrass; 4 *Pityogenes chalcographus* (L.); 5 *Phthorophloeus spinulosus* Rey; 6 *Hylurgops palliatus* (Gyll.).

Photo V. Zumr. Nach Pfeffer, 1989



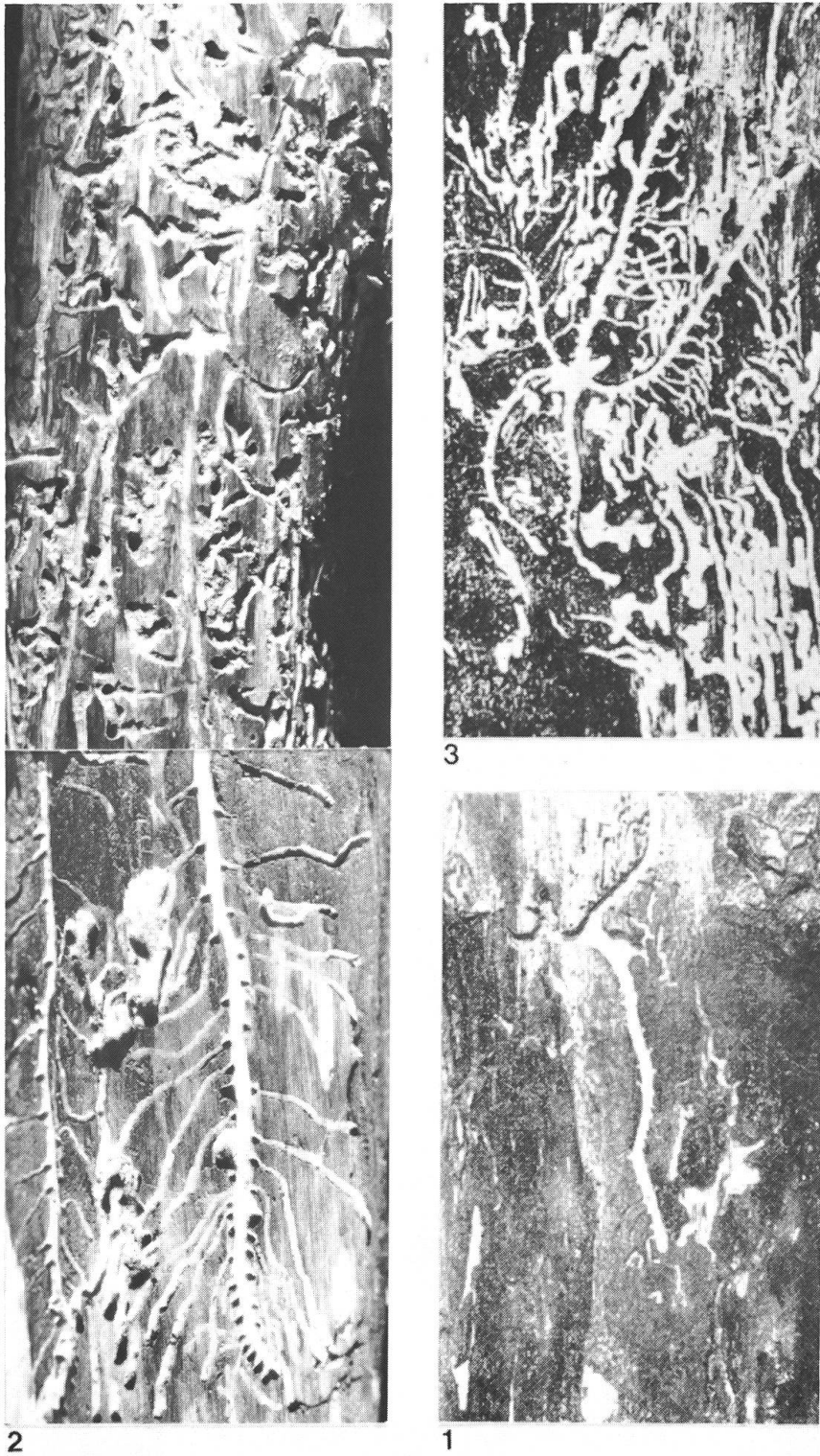
Taf.37: 1 *Ips amitinus* (Eichh.); 2 *Xyloterus lineatus* (Ol.); 3,4 *Ips typographus* (L.); 5 *Dryocoetes autographus* (Ratzb.).

Photo V. Zumr. Nach Pfeffer, 1989



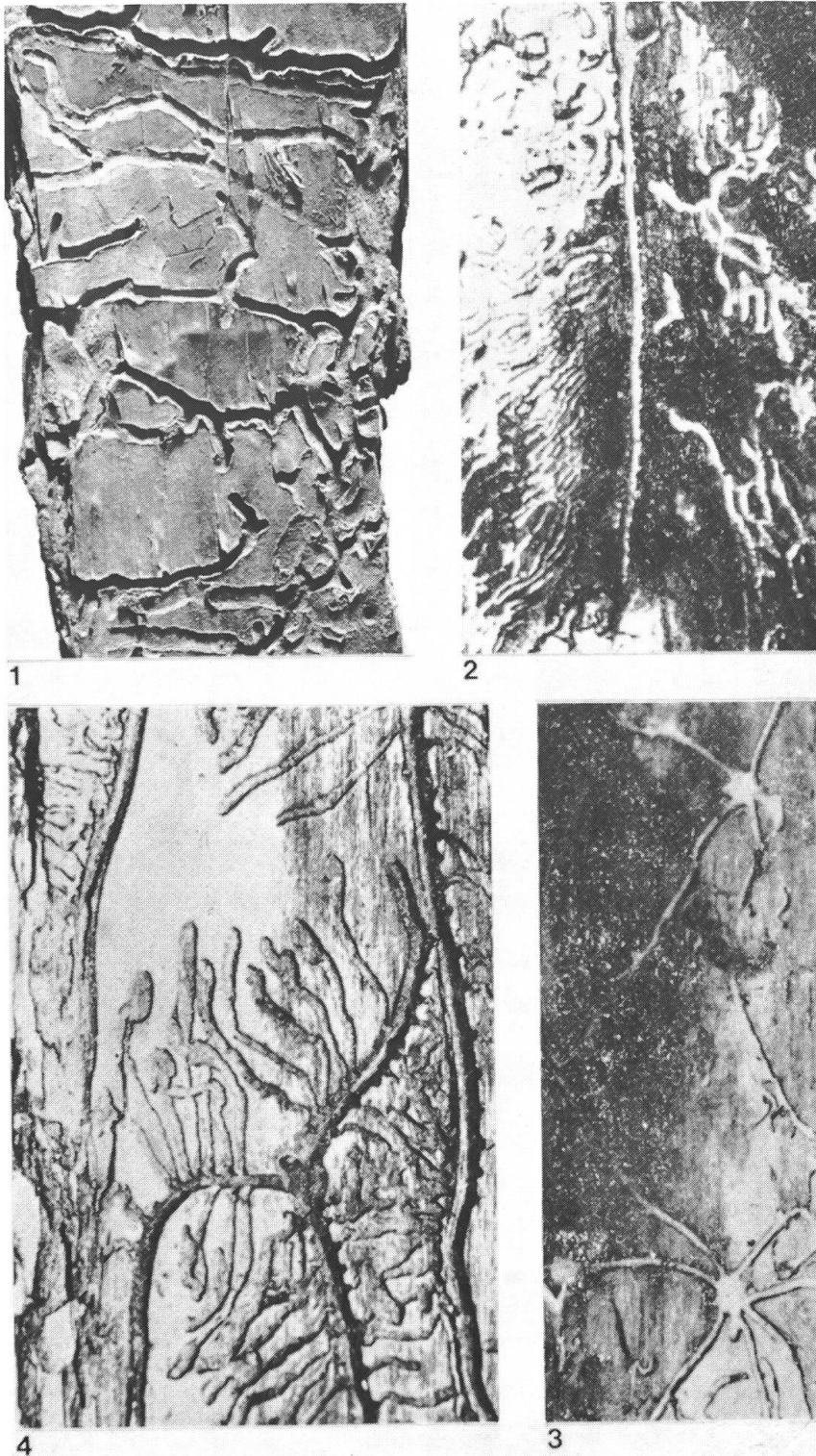
Taf.38: 1 *Polygraphus punctifrons* Thomps.; 2 *Xylechinus pilosus* (Ratzb.); 3 *Cryphalus abietis* (Ratzb.); 4 *Tomicus minor* (Hart.); 5 *T. piniperda* (L.); 6 *Pityogenes bidentatus* (Hbst.).

Photo V. Zumr. Nach Pfeffer, 1989

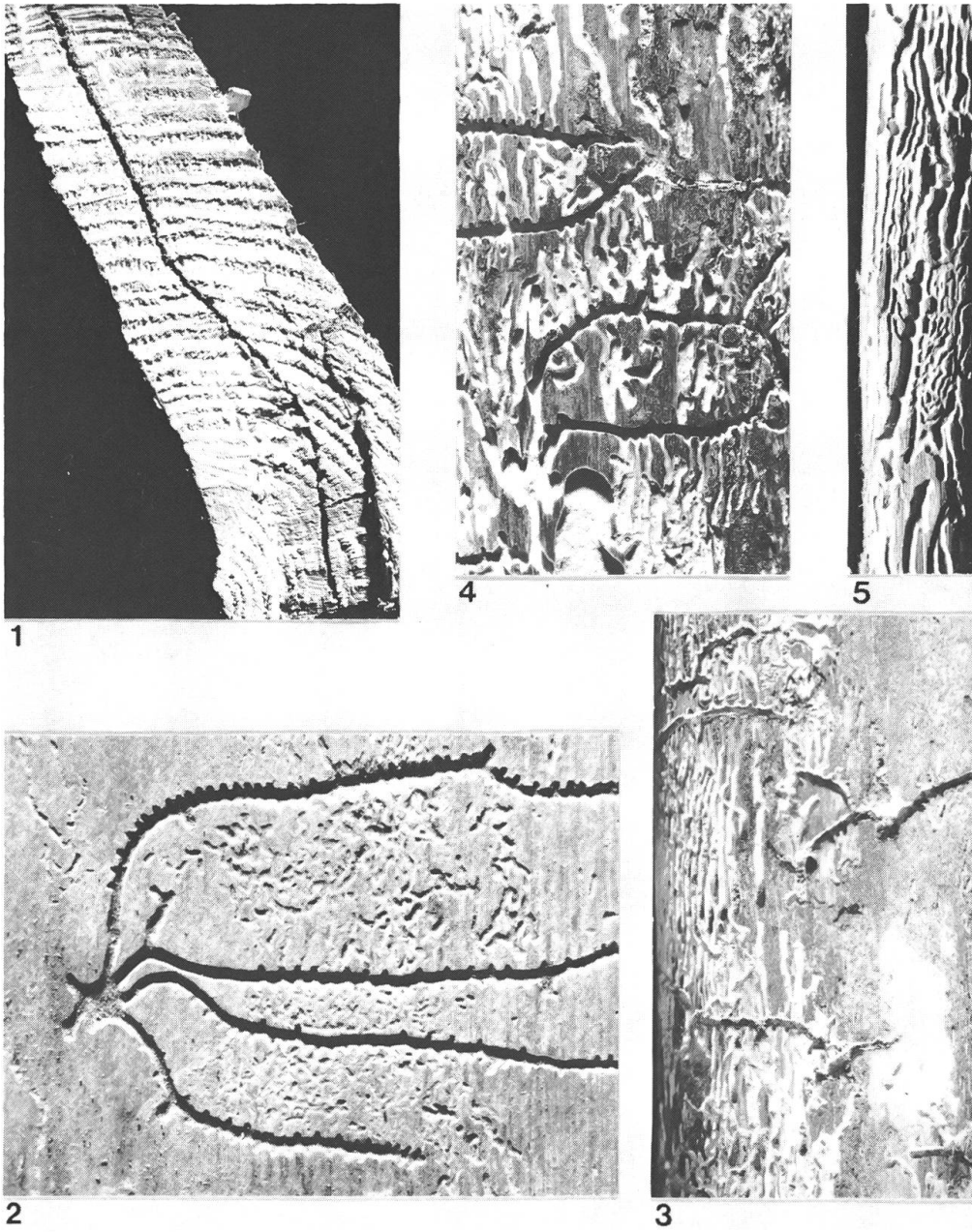


Taf.39: 1 *Orthotomicus suturalis* (Gyll.); 2 *Ips acuminatus* (Gyll.); 3 *Pityogenes quadridens* (Hart.).

Photo V. Zumr. Nach Pfeffer, 1989

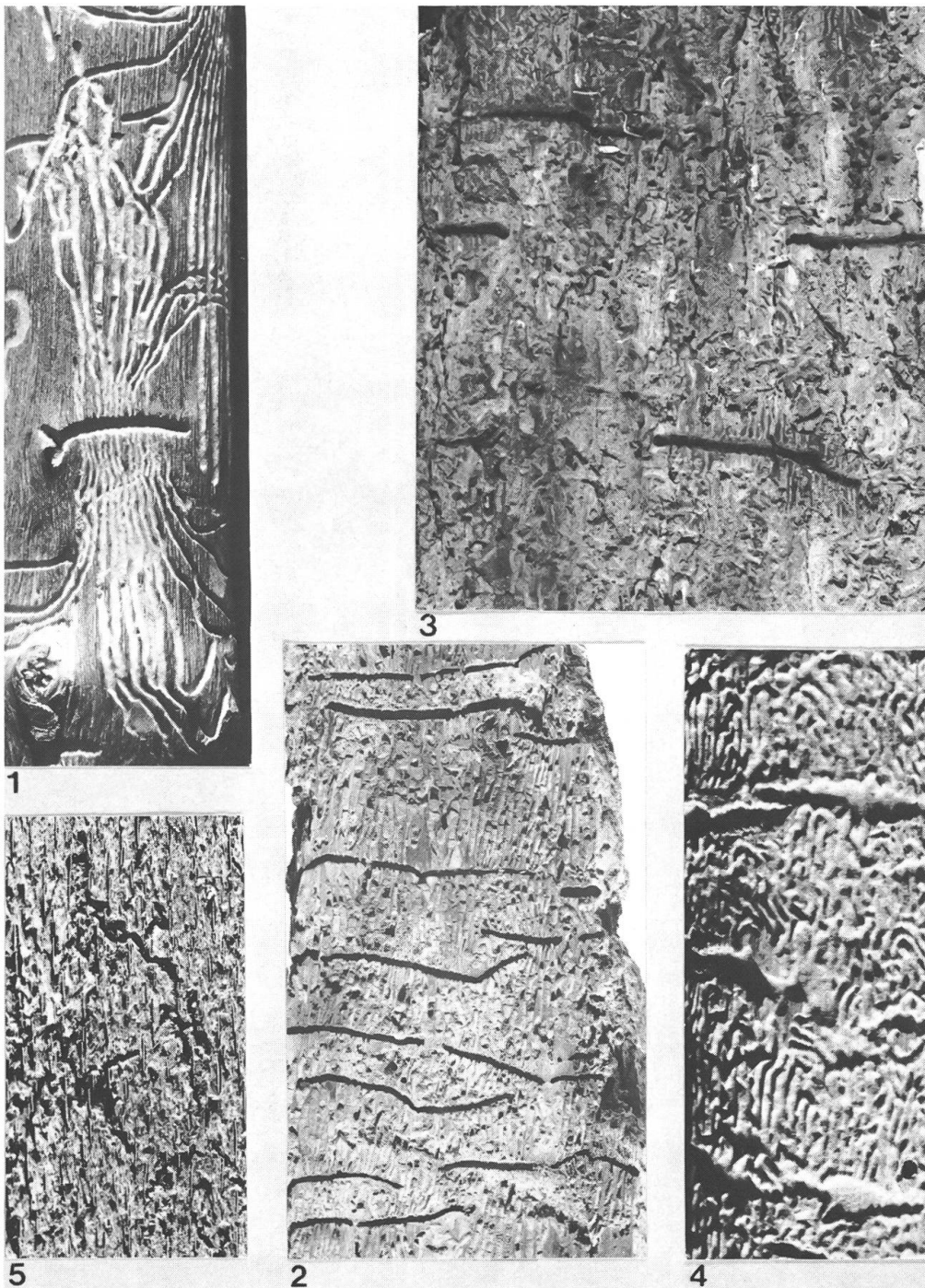


Taf.40: 1 *Orthotomicus longicollis* (Gyll.); 2 *O. proximus* (Eichh.); 3 *Pityogenes irkutensis irkutensis* Egg.; 4 *Ips cembrae* (Heer).
Photo V. Zumr. Nach Pfeffer, 1989



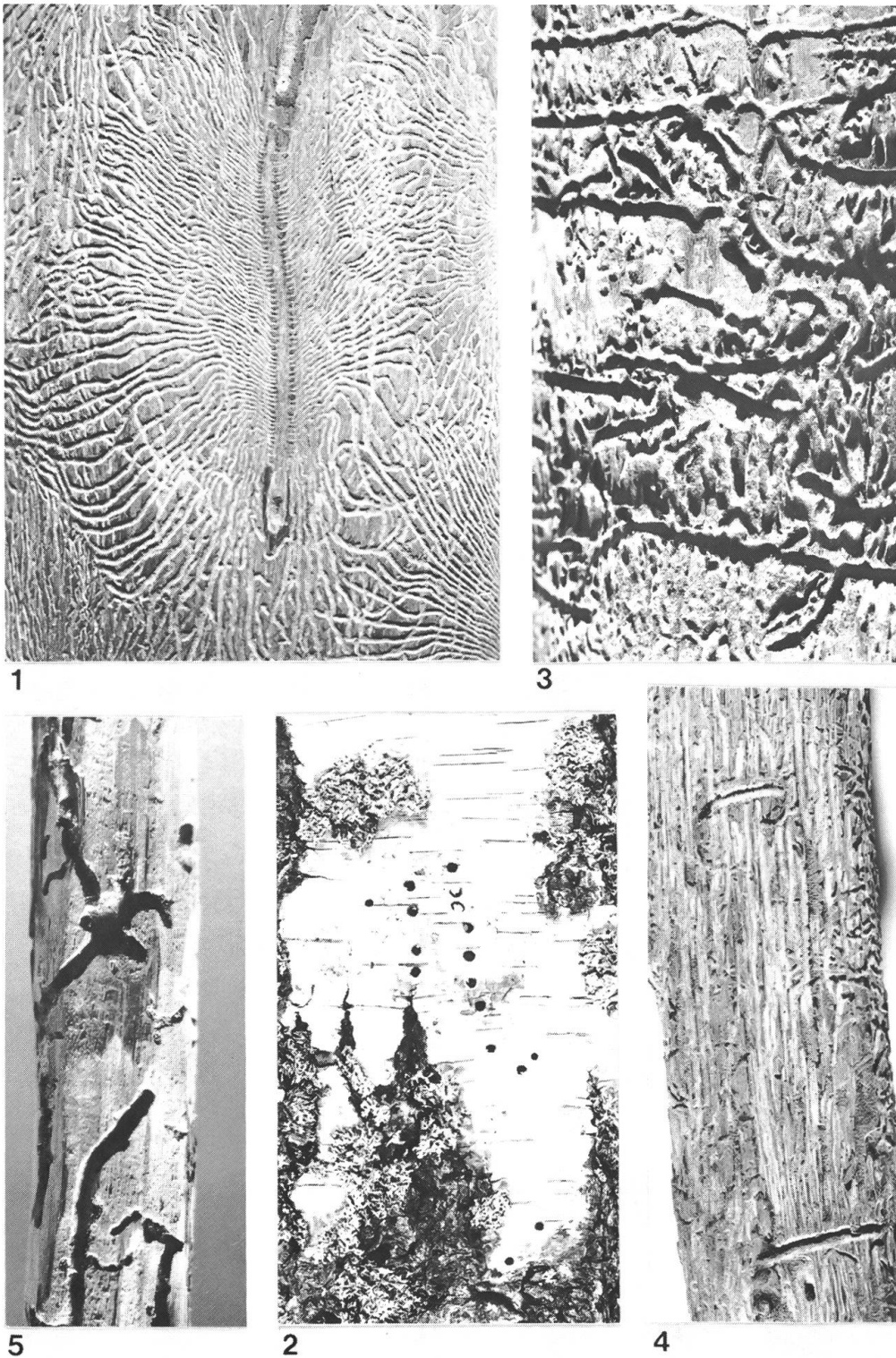
Taf.41: 1 *Platypus oxyurus* Duf.; 2 *Pityokteines spinidens* (Reitt.); 3 *P. vorontzowi* (Jak.);
4 *P. curvidens* (Panz.); 5 *Phloeosinus aubei* (Perr.).

Photo V. Zumr. Nach Pfeffer, 1989



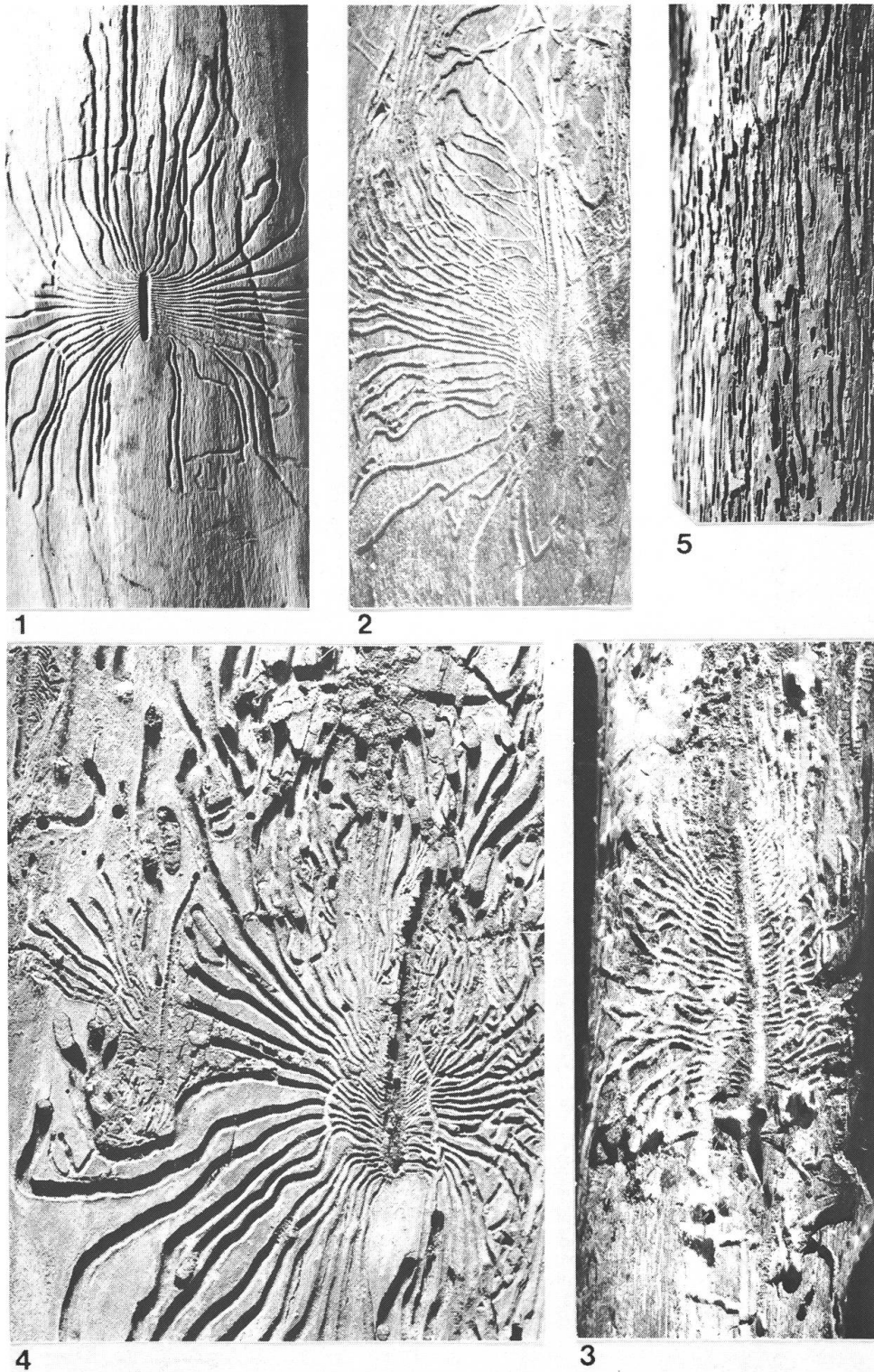
Taf.42: 1 *Hylesinus oleiperda* (F.); 2 *Leperisinus fraxini* (Panz.); 3 *Hylesinus crenatus* (F.); 4 *Hypoborus ficus* Er.; 5 *Taphrorychus bicolor* (Hbst.).

Photo V. Zumr. Nach Pfeffer, 1989

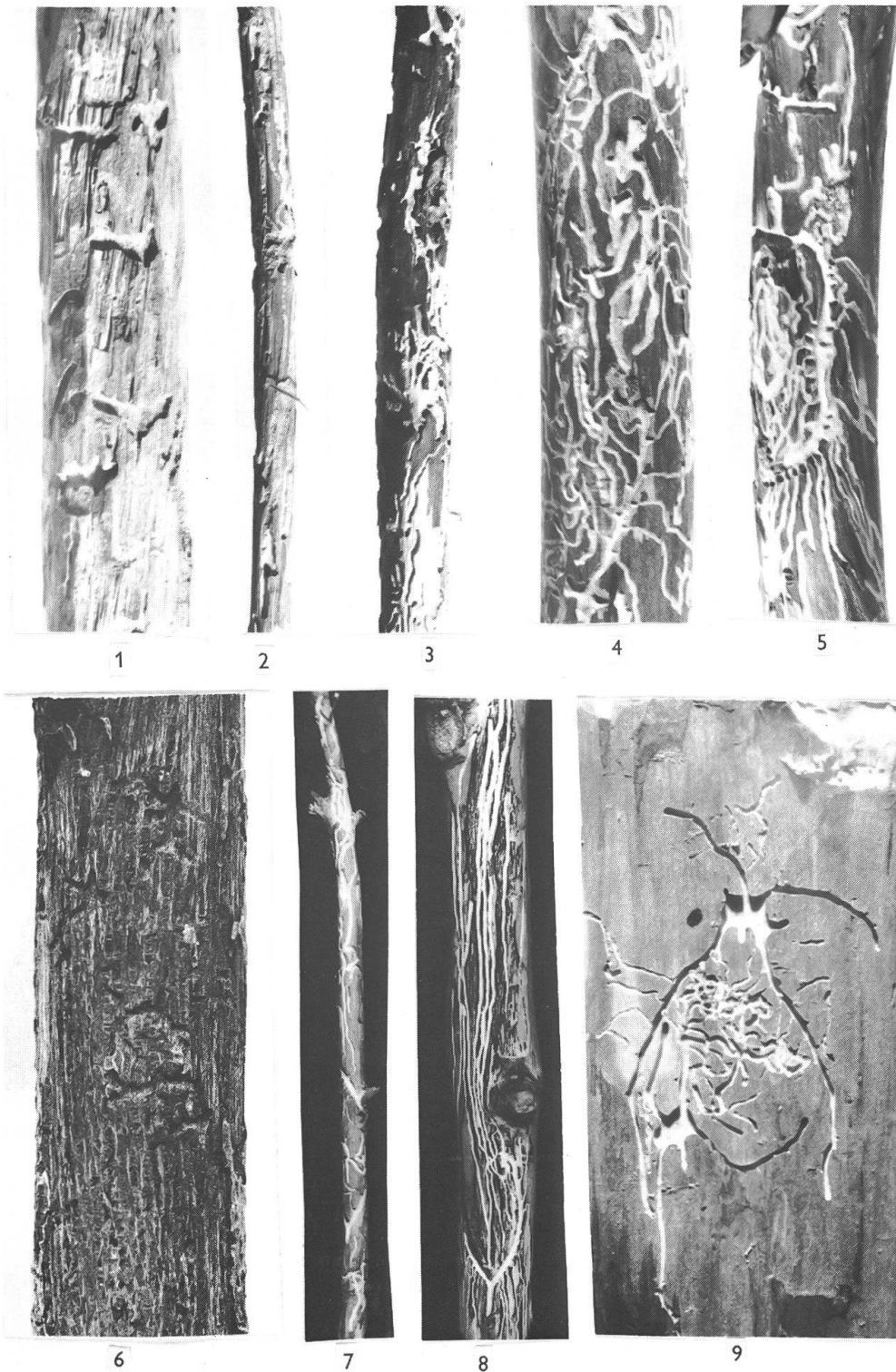


Taf.43: 1,2 *Scolytus ratzeburgi* Jans.; 3 *Kissophagus hederae* (Schm.); 4 *Scolytus intricatus* (Ratzb.); 5 *Lymantria coryli* (Perr.).

Photo V. Zumr. Nach Pfeffer, 1989



Taf.44: 1 *Scolytus koenigi* Schev; 2 *S. multistriatus multistriatus* (Marsh.); 3 *S. laevis* Chap.; 4 *S. scolytus* (F.); 5 *Dryocoetes alni* (Georg.).
 Photo V. Zumr. Nach Pfeffer, 1989



Taf.45: 1 *Liparthrum arnoldi* Sem.; 2 *L. mori* (Aubé); 3 *L. genistae genistae* (Aubé); 4 *Pityogenes bistridentatus* (Eichh.); 5 *P. trepanatus* (Nördl.); 6 *Saliciphilus machnovskyi* (Sokan.); 7 *Phloeophthorus muricatus* Egg.; 8 *P. pubifrons pubifrons* Guill.; 9 *Carphoborus cholodkovskyi* Spess. (Abb. 1,3,6 stark vergrößert).

Orig. Photo V. Zumr