

**Zeitschrift:** Helvetia : magazine of the Swiss Society of New Zealand  
**Herausgeber:** Swiss Society of New Zealand  
**Band:** 59 (1993)  
**Heft:** [4]

**Artikel:** Guuggenmusig in Chicago  
**Autor:** [s.n.]  
**DOI:** <https://doi.org/10.5169/seals-944700>

### **Nutzungsbedingungen**

Die ETH-Bibliothek ist die Anbieterin der digitalisierten Zeitschriften. Sie besitzt keine Urheberrechte an den Zeitschriften und ist nicht verantwortlich für deren Inhalte. Die Rechte liegen in der Regel bei den Herausgebern beziehungsweise den externen Rechteinhabern. [Siehe Rechtliche Hinweise.](#)

### **Conditions d'utilisation**

L'ETH Library est le fournisseur des revues numérisées. Elle ne détient aucun droit d'auteur sur les revues et n'est pas responsable de leur contenu. En règle générale, les droits sont détenus par les éditeurs ou les détenteurs de droits externes. [Voir Informations légales.](#)

### **Terms of use**

The ETH Library is the provider of the digitised journals. It does not own any copyrights to the journals and is not responsible for their content. The rights usually lie with the publishers or the external rights holders. [See Legal notice.](#)

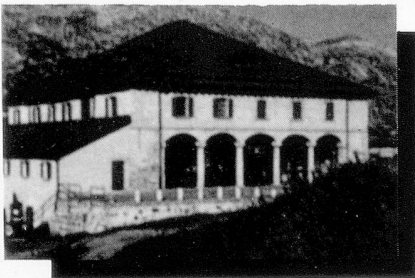
**Download PDF:** 05.02.2025

**ETH-Bibliothek Zürich, E-Periodica, <https://www.e-periodica.ch>**

# GUUGGENMUSIG IN CHICAGO



The Noggeler Guuggenmusig created an air of carnival wherever they went when they toured the USA. Here they are assembled along Lake Michigan with the Chicago skyline in the background.



**NATIONAL MUSEUM, ST. GOTTHARD**

Ice cold winds used to greet the early wanderers crossing the St. Gotthard on foot. In 1830 the first road was built over the St. Gotthard pass and a postal stage-coach crossed the pass three times a week. Twelve years later a 10 seater coach, pulled by 5 horses operated over the St. Gotthard daily. At that time, everyone stopped at the "Alte Sust", the hospice on the top of the pass at 2100m. Wenn the railway tunnel was opened in 1882, the hospice lost a lot of its importance. Today the "Alte Sust" features the highest museum in Europe, dedicated to the history of the most important alpine passes.

## NESTLÉ EXPANDS

Nestlé has just taken over a food manufacturing concern, Carpathia, in Slovakia. This is the third firm behind the ex-iron curtain that Nestlé has acquired recently. Previously it bought up a chocolate manufacturer in Hungary and a Czech confectionary firm.

## POLITICAL REFUGEES

In 1992, 18.000 people have applied to enter Switzerland as refugees, a sizeable reduction compared to the previous year when demands exceeded 41.600. One third of the applications alone came from people from the war-torn area of Yugoslavia, with the rest coming from Sri Lanka, Turkey and Somalia.

A similar trend was observed in countries such as France, Austria and Italy whilst Germany, Sweden and Denmark registered substantial increases in demands, which seems to indicate that political refugees, for one reason or another, favour now the northern countries of Europe.

**WE OFFER THE BEST FARES  
FOR TRAVEL TO/FROM**

**SWITZERLAND**

plus:  
**FAST, FRIENDLY AND  
EFFICIENT SERVICE**

**Phone or write in  
English/French/German to:  
HEINZ SIGERIST**

*Travelair*  
**International Ltd.**

**PO Box 37-335 Parnell, Auckland  
Phone: 64-9-377 3285 or 309 4500  
Fax: 64-9-302 1099**

## CLASSIFIED ADVERTISEMENTS

### FRED & PETER WEHRLI, MASTER BUILDERS

For building your new home or modernising your existing dwelling. Specialists in redesigning kitchens and bathrooms. Plans + specifications can be provided. Ph: 04 479-3485 Wellington

### SPILLMAN AUTOMOTIVE LTD.

All types of Vehicles Serviced and Repaired. All associated Services available incl. Electronic tuning, Fuel Injection, WOF Clutch & Brake, Exhaust, Transmission etc.

**10% discount with this add!**  
Ph. 09 634-4600 Auckland

### THIS MONTH'S SPECIAL

Venison Salamis, Venison Sausages. Contact Appenzell Deer Farm  
Ph. (09) 524-8899, Auckland.

### FOR SALE:

Fitted Single-Bedsheets, Frotté - Stretch from Switzerland. Colours: dark-green, violet, light-blue, pink, white. \$25.00 each.

Contact: Ueli and Ruth Baumberger. Fuchsia Lane R.D.4. Hamilton. Phone 07-829 5886

### TONI DOBOS, PROF. DRESSMAKER

Dressmaking - Alterations and Mending for Ladies, Gents and Children.  
Ph. 475 4125 Wellington