

Zeitschrift: Helvetia : magazine of the Swiss Society of New Zealand
Herausgeber: Swiss Society of New Zealand
Band: 61 (1995)
Heft: [3]

Rubrik: New Zealand's Swiss Club news

Nutzungsbedingungen

Die ETH-Bibliothek ist die Anbieterin der digitalisierten Zeitschriften. Sie besitzt keine Urheberrechte an den Zeitschriften und ist nicht verantwortlich für deren Inhalte. Die Rechte liegen in der Regel bei den Herausgebern beziehungsweise den externen Rechteinhabern. [Siehe Rechtliche Hinweise.](#)

Conditions d'utilisation

L'ETH Library est le fournisseur des revues numérisées. Elle ne détient aucun droit d'auteur sur les revues et n'est pas responsable de leur contenu. En règle générale, les droits sont détenus par les éditeurs ou les détenteurs de droits externes. [Voir Informations légales.](#)

Terms of use

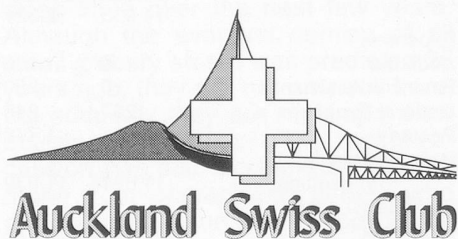
The ETH Library is the provider of the digitised journals. It does not own any copyrights to the journals and is not responsible for their content. The rights usually lie with the publishers or the external rights holders. [See Legal notice.](#)

Download PDF: 17.05.2025

ETH-Bibliothek Zürich, E-Periodica, <https://www.e-periodica.ch>

New Zealand's Swiss Club News

Auckland
Christchurch
Hamilton
Taranaki
Wellington



INVITATION TO THE AGM

EVERYBODY IS INVITED TO ATTEND
THE **ANNUAL GENERAL MEETING** ON
FRIDAY 5 MAY 1995

AT Oski's DENTAL FACTORY,
224 HOBSON STREET.

THE AGM STARTS AT 1900 HOURS
AND WILL FINISH OFF WITH A LITTLE
SNACK. THE AGENDA CONTAINS
ELECTION OF THE NEW PRESIDENT,
NEW COMMITTEE MEMBERS, THE
EXTENSION OF THE HUT AT THE FARM
AND THE USUAL FINANCIAL REPORTS.

JASSEN



Jassen begins again on **Friday, 19 May**, 7.30pm at the Gasthof "Prost Ethnic", 224 Hobson Street. Hans (ph 620 9208) invites all keen Jassers to come and have a stress free evening. Drinks are available. A plate is always appreciated. Hans offers as a prize his famous Sauerkraut and a couple of other prizes

DATES 1995

5 May AGM
4/5 June AGM Swiss Society

NOTE TO SECRETARIES

Next issue of the Helvetia magazine: JUNE 1995. All contributions must be in by 15 May. Many thanks for your kind cooperation.

NL EDITORIAL

Another Club year is coming to an end. I believe it has been reasonably successful, judging by the number of people taking part in all sorts of different events.

This year a new president takes the helm for what we hope will be a good while. To Chris and other committee members leaving we say thank you very much for your time and the effort you put in to make the club a living institution. This of course brings the need for new committee members. The more the better. Four hands make easier work than two. The other reason is of course a lot of people (committee members) will pass the "cold" NZ winter in "sunny" Switzerland. The unlucky ones (not having a holiday) have to work much harder to organise especially the first August. So if you feel like you have time to spare, please feel welcome to join the committee or just offer your help (physically or with feasible ideas) for the odd occasion. It will be very much appreciated.

Late addition: This is the artists general impression of the new look Farm-house. A bigger version will be on show at the AGM. The names of people involved will be published in the next issue. I don't like putting wrong names to the plans. My apology.

SHOOTING DIARY 1995

The following are set dates for shooting events in 1995 up at the Swiss Farm in Kaukapakapa.

Sunday, 21 May - Hamilton Shoot Day

Sunday, 11 June - Ausland & Eidgenössisch Shoot

All these meetings start 9am sharp. Bring your family & friends. B.B.Q. facilities available.

WANTED

COMMITTEE MEMBERS

We invite anybody to become member of the committee to replace outgoing members.

If you are interested, please contact any Committee member or phone Edi on 444-3020

SERVICE

wird bei uns GROSSgeschrieben, vielleicht gerade weil wir klein (aber fein!) sind. Mit Vertrauen dürfen Sie Ihre Freunde, Verwandten und Bekannten an uns für **günstige Flugtickets** nach AUSTRALIEN verweisen!

Zürich—Auckland—Zürich
schon ab **Fr. 1890.—**

Frankfurt—Auckland—Frankfurt
schon ab **Fr. 2240.—**

The best deal in town!

Der Spezialist für Verwandtenbesuche mit der sprichwörtlichen persönlichen Beratung!



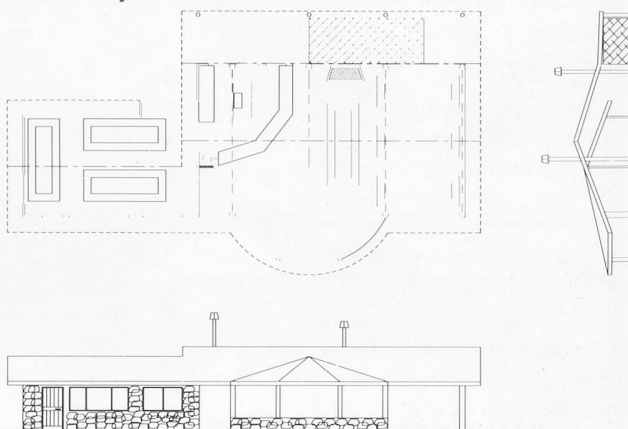
REISEGARANTIE

Südsee
Australien
Neuseeland

Quality
Team

Inh. Bruno Böckli
Badenerstrasse 12
5442 Fislisbach

Tel. 056/83 77 90
Fax 056/83 56 03



YOUR SWISS BAKERY, PATISSERIE & CAFÉ



Happy Mother's Day

Mothersday presents
for everyone's taste
and budget



Specials



Muttertags Torten
Zopfbrötchen

EVELINE & FRANZ MÜLLER

PHONE 489 9737, 5 Milford Road, Milford

HAMILTON SWISS CLUB

FORTHCOMING EVENTS:

Hamilton Swiss Club **AGM: 29th April 1995 8pm.** Swiss Craft premises, Frankton. All welcome.

Card Evenings:

Sat. 13 May, 7.30pm. Eureka Hall (plus medal competition)

Sat. 27 May, 7.30pm. Tirau Memorial Hall (plus medal competition).

Sat. 10 June, 7.30pm. Eureka Hall

Sat. 24 June, 7.30pm. Tirau Memorial Hall

Sat. 8 July, 7.30pm. Eureka Hall

Sat. 22 July, 7.30pm. Tirau Memorial Hall

First of August: 5th August 1995, 8pm. Tirau Memorial Hall.

Fondue Evening: 30th September 1995, 8pm. Eureka Hall. E.C.

OBITUARY

ERNEST PAUL STUDER passed away on 28th January, 1995. When Ernest and Judith came to New Zealand, they were share milking in Taranaki, later moving to the Waikato where they purchased their own dairy farm at Rototuna.

Right up until his sudden death on the golf course, Ernest was very active, being involved in Swiss functions, Operatic Society, Cantando choir, and the Soccer Club. In earlier years he was on the Editing Committee of the Helvetia magazine, and also involved in the Swiss Yodel and Dance Group.

We extend our deepest sympathy to his wife, Judith, his three sons, daughters-in-law and grandchildren.

TARANAKI SWISS CLUB

FORTHCOMING EVENTS:

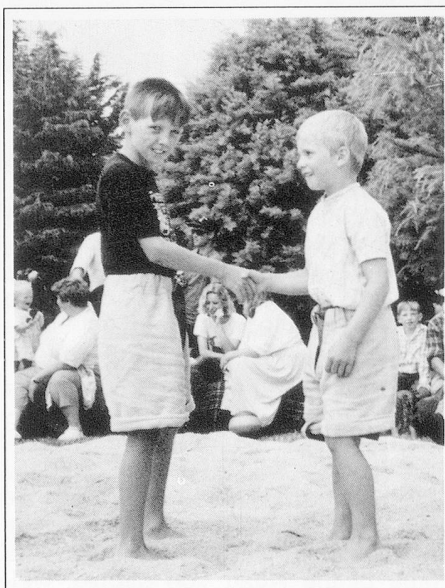
Sunday 7 May: Cards 1.15pm

Saturday 13 May: Championship Shoot at 11.00am, Preiskegeln at 1.00pm and Fondue from 6.30pm to 8.00pm

Sunday 21 May: Cards 1.15pm

ANNUAL PICNIC

The weather was on our side, attracting many members to our social day on 12 February 1995. People were scattered in the shade of the lovely trees around the club house. Running races for young children were held, as well as a lolly scramble, fishing and bike rides were popular activities. With lunch-time approaching, committee members were busy preparing the Bratwurst and Cervelat. From seem-



ingly nowhere, we had queues waiting for their turn to buy these delicious sausages. Schwingen was the main attraction of the day, with the cup once again being won by a Swiss Tourist. Many thanks to the referee and organisers of this event which is always very popular.

Congratulations to those of you who teach these young boys the technique of the game. It's lovely to watch these children shaking hands before and after the bout, and cleaning their opponents' backs after their win.

A very successful tombola was run throughout the day. Many thanks to those who donated prizes or money towards this raffle. It was great to see so much support for this type of raffle. The obvious delight on the children's faces when they had a winning ticket was terrific. As always we are very appreciative of our talented musicians who played throughout the day and into the evening. Grateful thanks to Zeno and Peter. Several members stayed for a pot-luck tea and entertainment, relaxing after a busy day.

It is always easy organising a day like the picnic when so many members willingly give a hand, and support the club in various ways. Our grateful thanks to you all.

WELLINGTON SWISS CLUB

Our Consul and friend, *Peter GRAF*, will show his impressions of the unique journey to the point most south on our planet earth. I'm pretty sure, we all are looking forward to this special treat.

Please bring a plate and your own drinks. We will supply coffee and tea for supper.

This evening is scheduled for **Saturday, 27 May 1995, 7pm sharp.**

Hopefully we're able to run the show in the Clubhouse, Ohariu Valley - otherwise we'll notify you in time.

All members of the Society are invited to the **Annual General Meeting** in Wellington. Under the circumstances as known today, we will host you in our Clubhouse in Ohariu Valley. We have ordered the best of the best weather (ask our friends from Taranaki how that looks and feels like!).

The AGM of the Swiss Society is usually made up of three parts:

- The final of the Cowbell Competition at 10am
- The actual AGM in the afternoon (see details in the main section)
- Dinner.

This year and only this year we are adding an additional section in between:

Peter Graf is leaving this, our beautiful, country behind. His new environment will soon be Teheran; just about the right timing to forget our winter temperatures. It's sad to see Peter and Dagmar go. But life has to go on and I guess moving from posting to posting is part of the job for our Embassy staff. We wish them both all the very best in their new environment.

SPECIAL INVITATION:

Peter is taking this opportunity to say "good-by" to all Swiss at the AGM. Also he is inviting all participants of the Society's AGM for a farewell drink. After the official part of the AGM is closed (expected to be at 4pm?), he will be offering drinks and nibbles (as we know him, only the best will do). Please join us to farewell Peter and Dagmar.

Dinner:

The venue for the evening dinner has not been decided as yet. We will advise you in due course.

Accommodation:

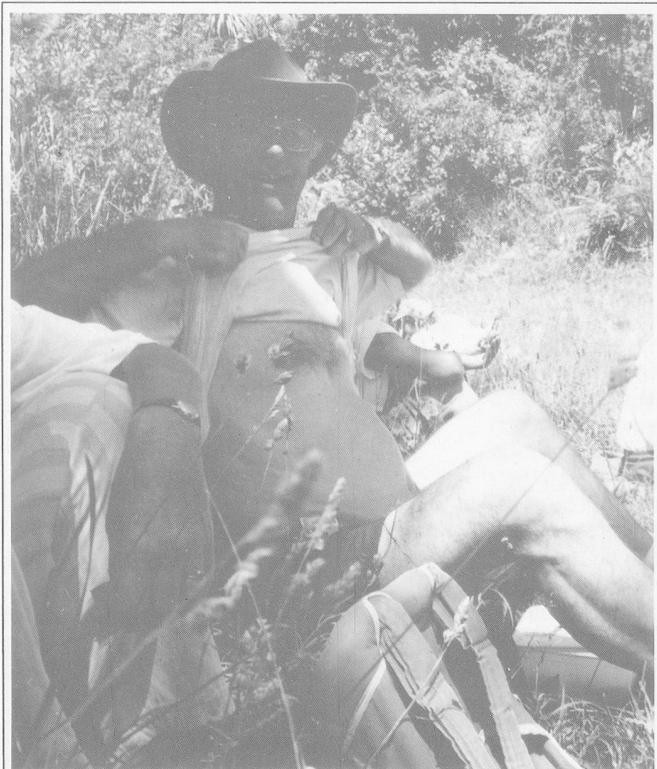
Any members requiring accommodation, please contact any Committee member of the Wellington Swiss Club as soon as possible.

Enjoy your stay in the Capital.

OUR SUMMER WALK

As the summer was warm and sunny we had plenty of opportunities to explore and prospect the greater Wellington Tramping Scene. In January we tackled the Korokoro Dam. For a change we started in Petone instead of the usual Belmont Regional Park approach. It was an easy walk, small and big enjoyed it.

In February we went to the Orongorongo and in March we repeated the Eastern walk from the Atatürk Memorial to the Pass of Branda, in Seatoun. We are happy when André Schleicher is part of the walking team, as he is always wearing a small gadget, which tells him how many steps he has taken during the walk and how many calories he has used up. It is always fun on the end of each trip to convert the steps into kilometres and the calories into meals!



André Schleicher showing off his gadget.



The Wellington Swiss Club visiting the Takapuwhia Marae in Elsdon.

Towards the end of the year we are planning a walk a little further afield. Please Wellington trampers, put in your diaries: Banks Peninsula walk, will be starting Monday 30th of October at 6pm in Akaroa (Christchurch). The walk is 4 days long, we will be sleeping in huts and tramp every day for about 4 hours. Hope you all can come.

MBG

BICULTURAL DAY

On Saturday, the 11th of March we celebrated our 2nd Bicultural day. The Takapuwhia Marae in Elsdon, the home of the Ngati Toa people, welcomed us with a short powhiri. A beautiful and very knowledgeable Chief, explained us the history of his marae, which was carved in the late 1970's. Two of the most important pattern-making and decorative arts and crafts of the Maoris were contained inside the decorative whare

whakairo (carved meeting house). The rafter patterns are called kowhaiwhai and the lattice panels or linings along the inner walls are named tukutuku. Some of them were made in the very traditional styles, others had a modern theme. We also admired the carved poupou (panels), which depict the Ngati Toa ancestors.

Peter Graf, a very eloquent Maori speaker, was our spokesperson. With a gift of Swiss mountain crystals, he showed our hosts how we appreciated the invitation to learn more about Marae life. In the nearby cafeteria, during a cup of tea, we were able to meet some more members of the tribe.

For a few visitors from Switzerland it was a first and quick introduction to the customs of the urban Maoris. The last speaker told us guests that we could now consider ourselves as one of them and that we could think of the Takapuwhia Marae as our home marae. I thought that was such a remarkable thing to say. And now we are all looking forward to the day when we are able to sleep on a Marae.



Swiss Chalet
Restaurant & Bar

Your Hosts
MONIQUE & PETER CANZIANI

New to New Zealand

The Egmont Gourmet Dinner

- ★ Continental Cuisine
- ★ Smorgasbord
- ★ Swiss Specialities
- ★ Daily Specials

★ REMEMBER ★

We Cater for • WEDDINGS • ANNIVERSARIES
BUSINESS FUNCTIONS • LUNCHES • A-LA-CARTE

**CLOSED
MONDAYS**

DINE AND DANCE
Accordion Music by Proprietor



165 RIDDIFORD STREET
NEWTOWN - WELLINGTON • TELEPHONE (04)389-4623

CHRISTCHURCH SWISS CLUB

No report received from the Christchurch Club for this month's issue of the Helvetia.

CRIMINALITY

Would you have guessed that Luxembourg has the largest criminality in Europe and The Netherlands the lowest? See for yourself (the figures indicate the number of prisoners per 100,000 inhabitants).

Luxembourg 58	Switzerland 48
Great Britain 55	Belgium 42
Spain 52	Denmark 41
France 52	Sweden 39
Austria 51	Italy 38
Germany 49	The Netherlands 32

Of course the statistics could also simply prove that the police in Luxembourg are far more efficient in catching the culprits than the police in the Netherlands, an explanation which would also account for the rather surprising position of Italy almost at the bottom of the above table.

PETANQUE

This French variation of the Boccia or bowling called "jeu de boules" or "pétanque" has not only taken New Zealand by storm, but also Switzerland. For many years, confined to the French part of Switzerland, it suddenly became very popular in the whole country.

The great advantage of the game is that it requires very little space, no expensive level surface, no special equipment or clothes, so that it can be played by anyone and almost anywhere where there is a reasonable base of gravel and sand.

Up to now, pétanque has always been played outdoors but with its popu-



SAINT VALENTINE'S DAY

Two Swiss friends who have known one another for 11 years, 11 months and 11 days, on a holiday trip to New Zealand, loved the place so much that they decided to get married here before returning to Switzerland. The marriage took place in Kaikoura on the beach on February 14, 1995. The church wedding ceremony will eventually take place in Switzerland.

The happy couple Daniela and Bernhard Bigler-Friederich on the beach at Kaikoura.

larity growing so fast, it will not be long before someone will create an indoor playground so that the pétanque lovers can enjoy their game all year round.

PET FOOD COSTS

How much do people in Europe spend on food for their pets? (figures, in NZ dollars, are per animal and per year):

Switzerland	\$257
Germany	\$224
Great Britain	\$183
France	\$125
Italy	\$74
Spain	\$52

So if you are a cat or a dog, you are 5 times better off in Switzerland than in Spain. But do not tell this to the Spanish pets, otherwise they would all want to migrate to Switzerland too.



AVAILABLE NOW!

**New Zealand's finest
Delicatessen
Meats**



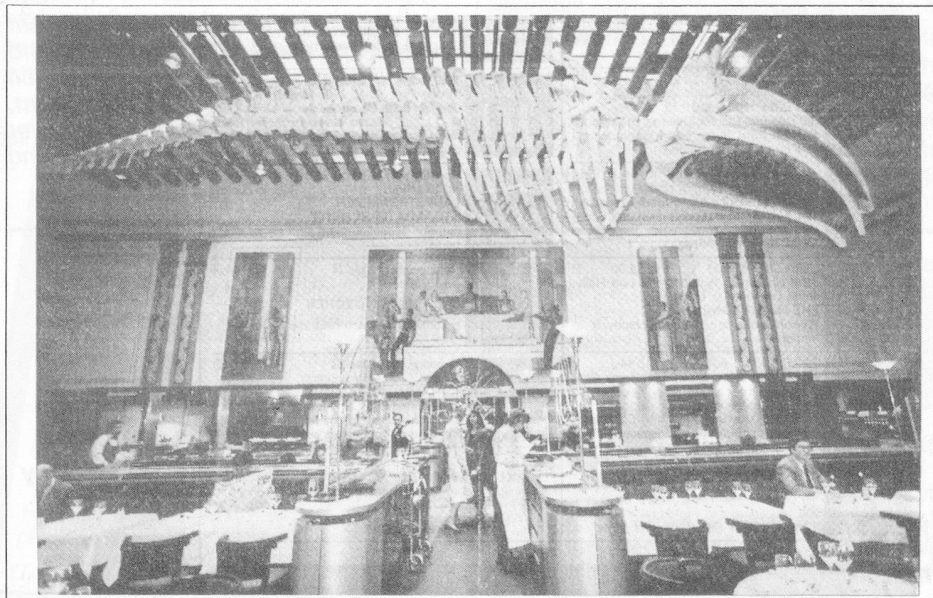
Continental Frying/Boiling
Sausages · Specialty Meats
Meat Loaves · Smoked Meats
Cold Cuts · Salamis

274 4455

FAX: 274 1203

BAHNHOFBÜFFET WITH A MARITIME TOUCH

The Basel "Bahnhofbüffet" has recently been totally renovated and has been renamed "La Baleine" (The Whale). To justify the choice of the name, the restaurant owner has hung a full size skeleton of a whale high above the tables to create a distinctive maritime atmosphere. Tongue in cheek, he hopes that his customers will thus have a whale of a time when they patronise his new look restaurant.



Wolf, Ms Ursula Stucki and Mr L. Butler.

The Minutes of the last AGM were read by Mr Fitzi and found correct. Moved by Hans Iten, seconded by Walter Hartman. It was pointed out that reference made to Walter Staheli should have been Herbert Staheli.

The President's Report was read and accepted.

The Financial Report was read and accepted, moved by Mrs. Melville-Schoepfer, seconded by Mr Ruedi Dudli. There was discussion concerning dates for the AGM and which year subscription related to. Questions were raised as to why advertising costs had decreased and to why a decision had been made to offer financial assistance to a woman in Nelson. Some people felt this should be the responsibility of the Embassy and not the Society.

The Editor's Report was read and accepted.

The Report by the Delegate to the Swiss Abroad was not available to be read at the meeting.

The Riflemaster's Report was also not available to be read at the meeting. The riflemaster has tendered his resignation.

ELECTION OF OFFICERS.

The existing committee was re-elected. No nominations were forwarded for a new riflemaster. It was left to the committee in conjunction with the clubs to select a new riflemaster. It was suggested that the riflemaster forward results of competitions to be published in the Helvetia.

APPOINTMENT OF SCRUTINEERS.

Mr Ruedi Dudli and Mr C. Waldvogel were selected to be scrutineers.

SUBSCRIPTIONS.

The committee had put forward the motion that subscriptions be increased to \$25.00 per member or family member and 11/12 issues of the Helvetia be published.

The discussion concerning this motion covered the following points and suggestions.

- Subscriptions should be at a reduced cost for single members.
- Subscriptions should be set for the following year not the current year.
- In the past there had been a motion suggesting the Society advise the clubs of what the new subscription was to be before February.
- There was not enough notice given for people to send in their postal votes.
- Some people had not received their

magazines due to a secretarial error in the mailing list.

- It was suggested that the postal votes were not valid as there was no control that people had not voted twice, once by post and once by being present at the meeting.

- Christchurch representatives expressed concern that the accumulated funds of the Society were decreasing.

- The general feeling was that there had been a lack of communication on the part of the committee and that if the clubs had been advised in February that the subscriptions were to be increased they would have been happy to pay the extra.

A motion was put forward that the subscriptions be increased to \$25.00 for the 1995/1996 year. This was not accepted by the 128 President as it was substantially different from the original motion which related to the 1994/1995 year. A vote was held and the motion failed with 27 for and 41 against. Proxy votes and postal votes were not counted as they would not have altered the outcome and there was concern over their legality.

General Business

A recommendation was put that the fees be increased to \$25.00 next year. There was suggestion of clubs changing the dates of their meetings to be later than the Society meeting or the Society changing its date to an earlier one.

It was suggested that each club hold a social function in aid of the Society.

There was a question of why an advertisement from a Hawera Travel Agent had not been published in the magazine.

The cowbells were presented by Hamilton to Taranaki who was the winner and by Taranaki to Hamilton who were the runners up.

It was requested that in future the deciding game for the cowbell competition should be Jass rather than Kegeln.

The place for the next meeting was to be in Wellington with no date being set in the meantime.

The Meeting closed at 4.05 pm.

LEGO KEEPS PILING UP ITS BRICKS

Nothing can stop Lego, the little toy brick that originally came from Denmark in 1958 as a genial invention by Gotfred Kirk Christiansen. Since then the Lego empire has expanded and employs now over 8560 people worldwide. It now features 1574 different

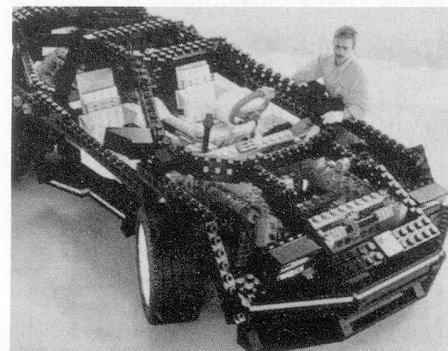
For Citroen, Mazda, Holden and Isuzu Sales & Service



contact Moller
Johnson Motors
Hawera Ltd.
Regent Street, Hawera,
Phone 0800-739166
We will not be beaten.

pieces spread over 436 different boxes, which are sold in 60.000 shops in 120 countries. 300 million kids and adults are playing with them, spending some 5 billion hours putting them together.

Switzerland was the first country outside Denmark where the Lego pieces were made under licence. The first Swiss factory opened in 1974 in Baar near Zug. There are now 5 different factories with the biggest one being built in Willisau (LU) representing the largest single investment ever made by Lego anywhere in the world.

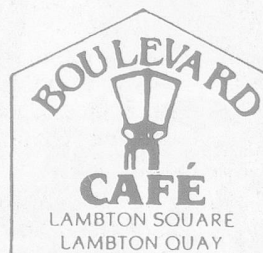


The world's largest Lego car is 4.75m long, 2.3m wide and 1.5m high and weighs one ton. Should you find it a bit too big to fit into your children's room, there is a version 10 times smaller available in the toy shops for only around \$250.

MARIA & UELI Campervan & Car Rentals Ltd

- Freundliche seriöse Bedienung ○
- Gute Preise ○

P.O. Box 15607, New Lynn, Auckland
Tel./Fax 09 827 0214



Telephone 473 0163

Cooked Breakfast
Morning and Afternoon Teas
Luncheon -
Blackboard Menu
Home-Made Cakes

Open from 7.30am Monday
to Friday

Jürg & Ursula Stucki