

# Extinct Swiss cow turns up in Patagonia

Autor(en): **[s.n.]**

Objektyp: **Article**

Zeitschrift: **Helvetia : magazine of the Swiss Society of New Zealand**

Band (Jahr): **75 (2009)**

Heft [3]

PDF erstellt am: **22.07.2024**

Persistenter Link: <https://doi.org/10.5169/seals-944439>

## **Nutzungsbedingungen**

Die ETH-Bibliothek ist Anbieterin der digitalisierten Zeitschriften. Sie besitzt keine Urheberrechte an den Inhalten der Zeitschriften. Die Rechte liegen in der Regel bei den Herausgebern. Die auf der Plattform e-periodica veröffentlichten Dokumente stehen für nicht-kommerzielle Zwecke in Lehre und Forschung sowie für die private Nutzung frei zur Verfügung. Einzelne Dateien oder Ausdrucke aus diesem Angebot können zusammen mit diesen Nutzungsbedingungen und den korrekten Herkunftsbezeichnungen weitergegeben werden. Das Veröffentlichen von Bildern in Print- und Online-Publikationen ist nur mit vorheriger Genehmigung der Rechteinhaber erlaubt. Die systematische Speicherung von Teilen des elektronischen Angebots auf anderen Servern bedarf ebenfalls des schriftlichen Einverständnisses der Rechteinhaber.

## **Haftungsausschluss**

Alle Angaben erfolgen ohne Gewähr für Vollständigkeit oder Richtigkeit. Es wird keine Haftung übernommen für Schäden durch die Verwendung von Informationen aus diesem Online-Angebot oder durch das Fehlen von Informationen. Dies gilt auch für Inhalte Dritter, die über dieses Angebot zugänglich sind.

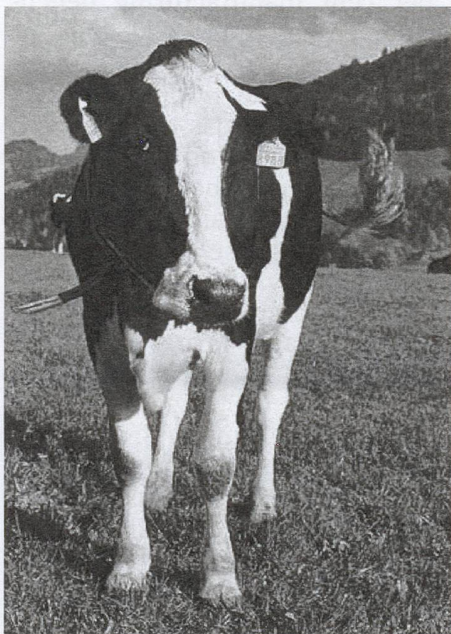


## Extinct Swiss cow turns up in Patagonia

For over 35 years the classic black-and-white Fribourg cow was thought to be extinct. But several examples seem to have reappeared - in South America. Retired Swiss economist Roger Pasquier rediscovered what are thought to be Fribourg cows, imported from Switzerland in the 1930s, while investigating his family roots in Punta Arenas in Southern Chile.

Pasquier also collected information on José Davet, a Chilean with Swiss roots and a former Swiss vice-consul, who imported a dozen cows from Blessens, a village between Fribourg and Lausanne, in the 1930s.

Pasquier's discovery has created considerable media interest in Switzerland. The animal and plant protection foundation Pro Specie Rara now intends to carry out further research into the Chilean black-and-white cows.



The Fribourg cow, like many other breeds of cattle, died out in the second half of the 19th century during the process of industrialisation. The Holstein cow from Holland, which is an excellent milk-producing cow and also has black and white markings, replaced the symbol of canton Fribourg. Many Swiss do not real-

ise that the original Fribourg cow died out. Nobody foresaw the extinction of the old breeds, but everyone looked to the future of new ones. They saw that a cross between a Holstein cow and a Fribourg cow resulted in larger animals with better milk production. Everyone then produced crossbreeds and nobody thought about preserving a purebred like the Fribourg cow which subsequently disappeared.

The very last purebred Fribourg cow - a bull named Héron - was slaughtered in Switzerland in 1975.

If the information collected by Pasquier proves to be correct, the Fribourg cow survived on the grasslands in Punta Arenas, Patagonia. Apparently the farmers in Punta Arenas also tried to cross-breed cows to make them more productive. But they were unsuccessful because the crossbred calves, unlike the Fribourg cows, couldn't stand the extreme southerly climate.

This leads experts to believe that the breeds found in Chile are relatively free of other genetic influences and the 'extinct' Swiss breed can be saved.

*from swissinfo*

*1st April is April Fool's Day - can you spot the April Fool's Day article in this Helvetia?"*

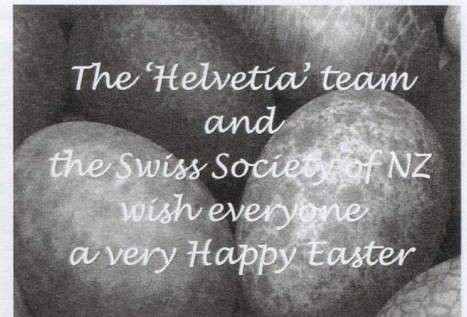
### swiss café & bakery

5 Milford Road, Milford, Auckland  
Ph/Fax 09 489 9737

Owners Franz & Eveline Muller have been baking and serving fine food and coffee at their Swiss Bakery & Café since its establishment more than 12 years ago.

- Cooked breakfasts as well as a large selection of bakery goods
- Specialty Swiss confect and chocolates
- Party food including specialty cakes and fancy breads to order

Hours: Monday to Friday 8am - 3.30pm  
Saturday 8am-2.30pm  
Sunday closed



TRADITIONAL FINE MEATS AND SMALL GOODS

**AVAILABLE NOW!**

**New Zealand's finest  
Delicatessen Meats**

- Continental Frying/Boiling Sausages  
• Specialty Meats • Meat Loaves  
• Smoked Meats • Cold Cuts  
• Salamis • Dried Meats



Visit our factory shop:  
68-70 Greenmount Drive  
East Tamaki, Auckland

Hours: Monday to Thursday 8am-4pm  
Friday 8am-5pm • Saturday 8am-1pm

P 09 274 4455 F 09 274 1203 W [www.swissdeli.co.nz](http://www.swissdeli.co.nz)  
PO Box 51-520 Pakuranga Auckland 2140



Incorporating Domestic & Commercial Work  
Specialists in Fabric & Leather Upholstery  
Also Deep Diamond Buttoning  
All Furniture Re-Upholstery

**Swisscraft Ltd**

Manager: **Herbert Staheli**

Showroom: 33-39 Colombo St  
Frankton-Hamilton

Call us

Phone 07 8477 220

Fax 07 8473 039