

Zeitschrift: Mitteilungsblatt / Keramik-Freunde der Schweiz = Revue des Amis Suisses de la Céramique = Rivista degli Amici Svizzeri della Ceramica

Herausgeber: Keramik-Freunde der Schweiz

Band: - (2007)

Heft: 119-120

Artikel: Bedrucktes Steingut aus der Manufaktur Scheller in Kilchberg

Autor: Ducret, Peter

Register: Abbildungskatalog

DOI: <https://doi.org/10.5169/seals-395202>

Nutzungsbedingungen

Die ETH-Bibliothek ist die Anbieterin der digitalisierten Zeitschriften. Sie besitzt keine Urheberrechte an den Zeitschriften und ist nicht verantwortlich für deren Inhalte. Die Rechte liegen in der Regel bei den Herausgebern beziehungsweise den externen Rechteinhabern. [Siehe Rechtliche Hinweise.](#)

Conditions d'utilisation

L'ETH Library est le fournisseur des revues numérisées. Elle ne détient aucun droit d'auteur sur les revues et n'est pas responsable de leur contenu. En règle générale, les droits sont détenus par les éditeurs ou les détenteurs de droits externes. [Voir Informations légales.](#)

Terms of use

The ETH Library is the provider of the digitised journals. It does not own any copyrights to the journals and is not responsible for their content. The rights usually lie with the publishers or the external rights holders. [See Legal notice.](#)

Download PDF: 11.12.2024

ETH-Bibliothek Zürich, E-Periodica, <https://www.e-periodica.ch>



Abb. 80



Abb. 83



Abb. 81



Abb. 82

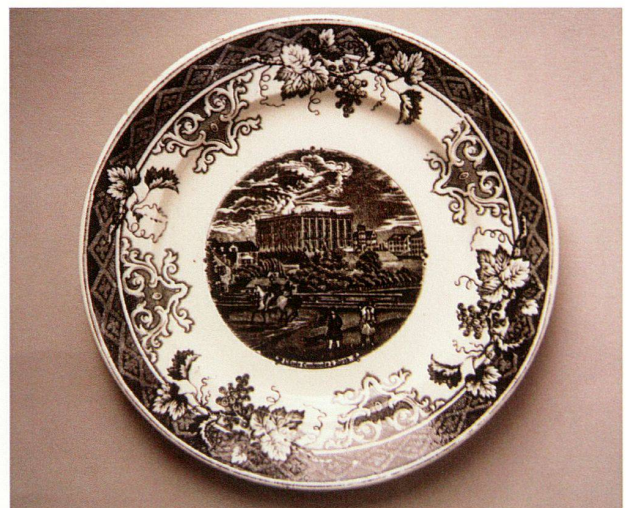


Abb. 84



Abb. 86



Abb. 89

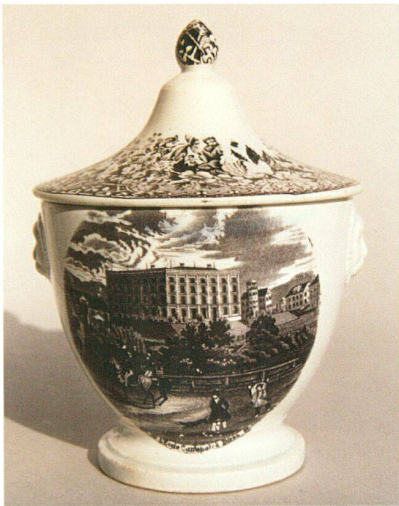


Abb. 87

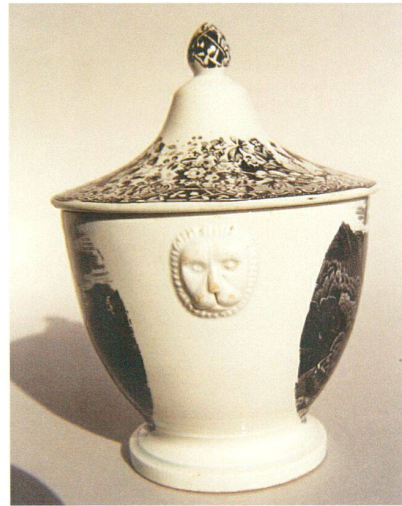


Abb. 88



Abb. 85



Abb. 90



Abb. 91



Abb. 94



Abb. 92



Abb. 95

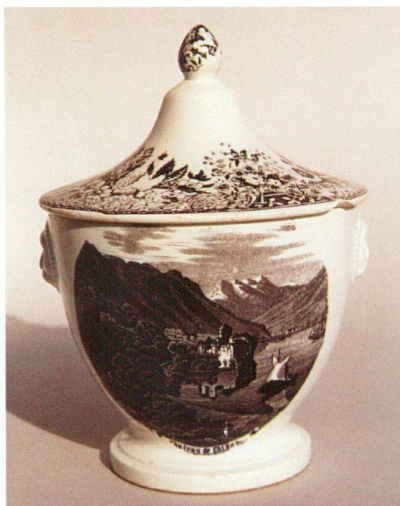


Abb. 93



Abb. 96



Abb. 97



Abb. 99



Abb. 98



Abb. 100



Abb. 101



Abb. 104



Abb. 102



Abb. 105



Abb. 103



Abb. 106



Abb. 109



Abb. 110



Abb. 107



Abb. 111

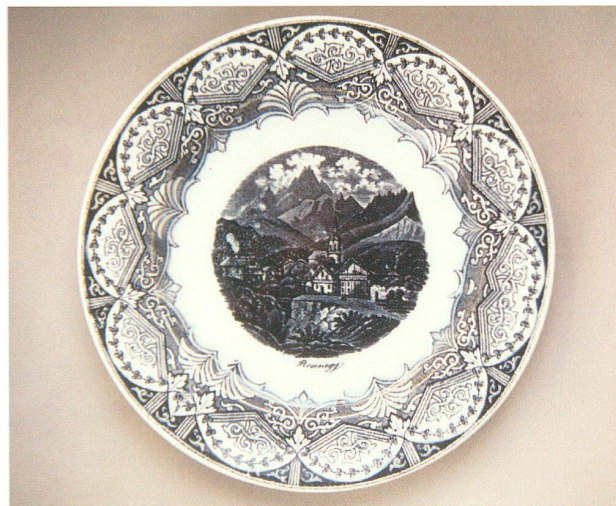


Abb. 108

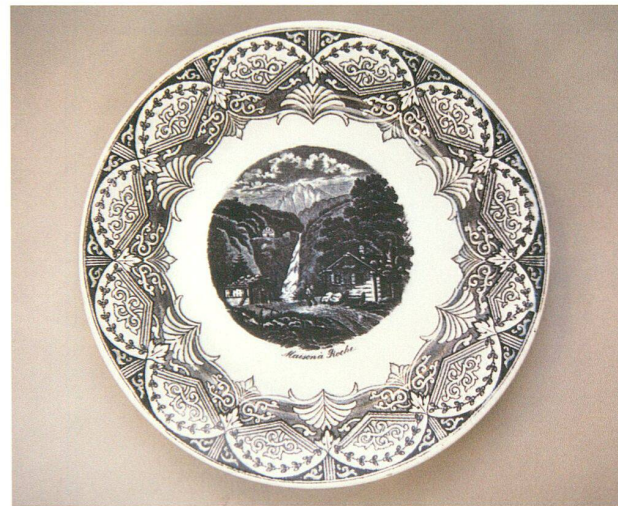


Abb. 117



Abb. 112



Abb. 116



Abb. 114

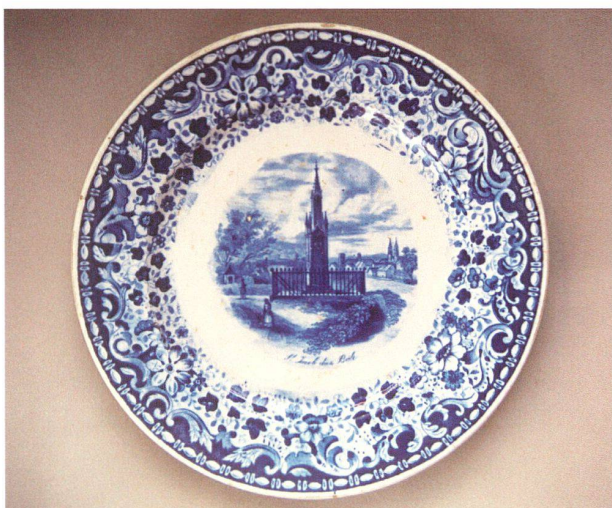


Abb. 113



Abb. 115

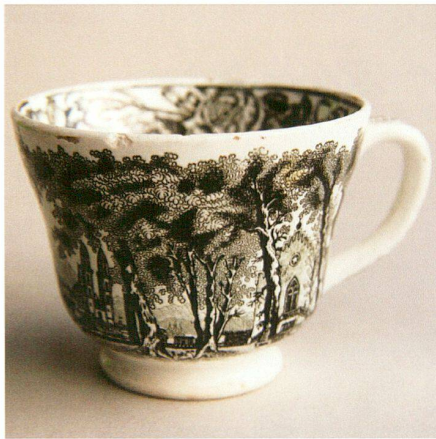


Abb. 118



Abb. 119

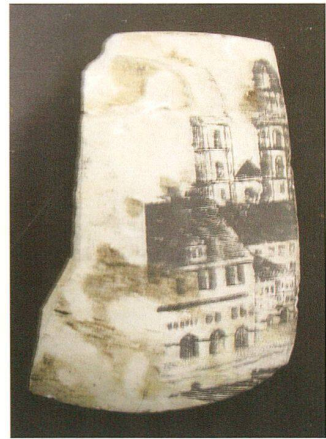


Abb. 120

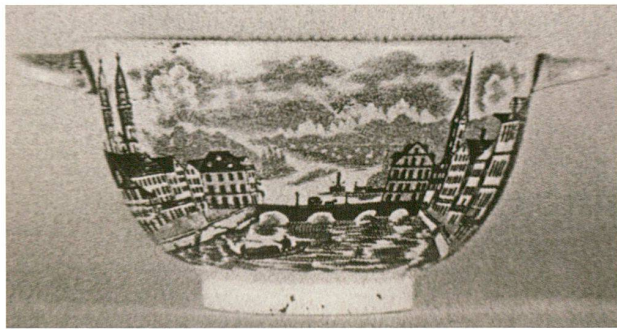


Abb. 122



Abb. 121

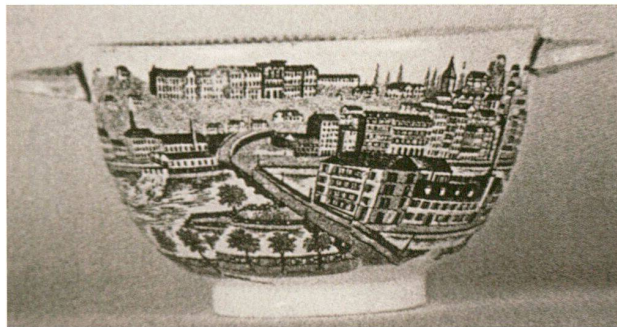


Abb. 123

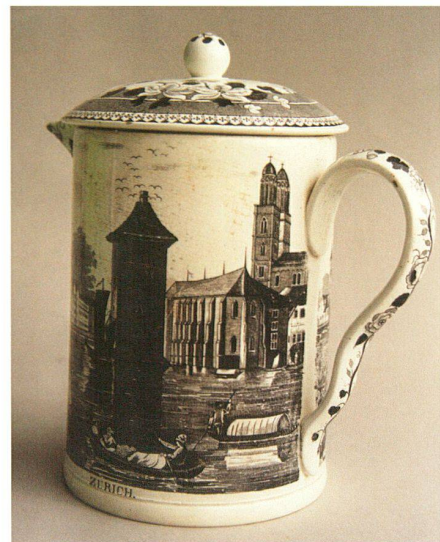


Abb. 125

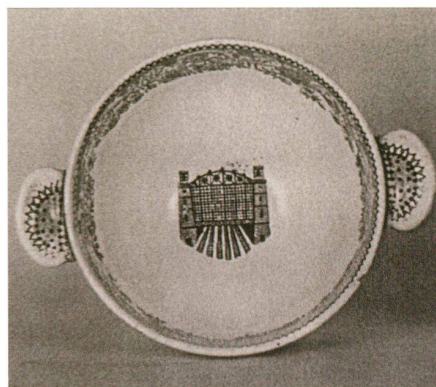


Abb. 124



Abb. 126



Abb. 128



Abb. 127



Abb. 129



Abb. 130



Abb. 133



Abb. 131



Abb. 136



Abb. 132



Abb. 134



Abb. 137



Abb. 141



Abb. 138



Abb. 142



Abb. 139



Abb. 143



Abb. 140



Abb. 144



Abb. 147



Abb. 145



Abb. 148



Abb. 146



Abb. 149



Abb. 150

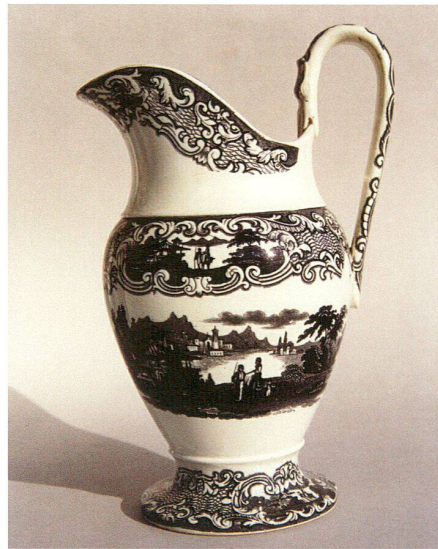


Abb. 151



Abb. 152

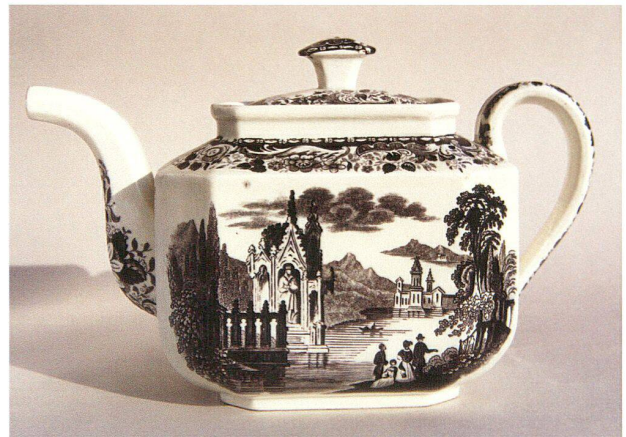


Abb. 153

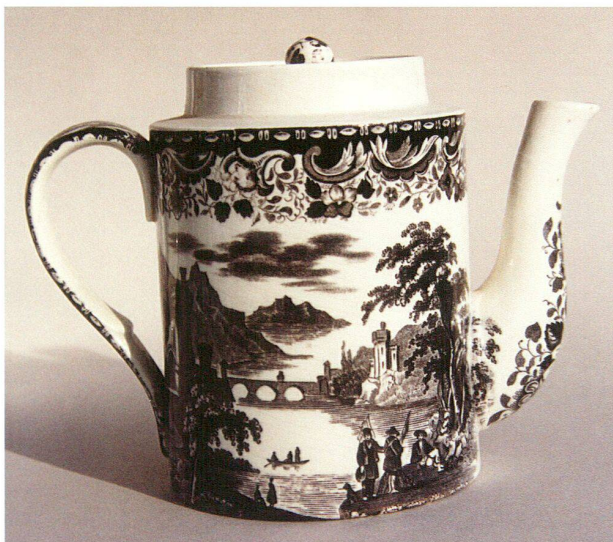


Abb. 154



Abb. 155



Abb. 156



Abb. 157

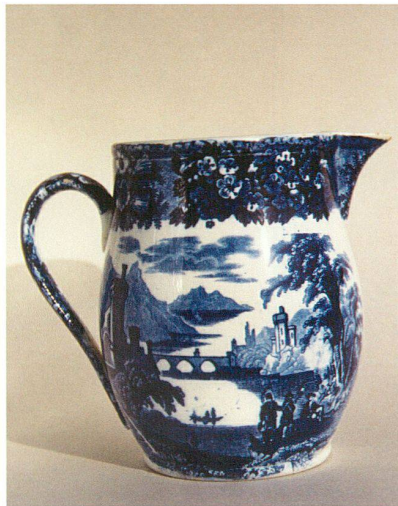


Abb. 159



Abb. 161

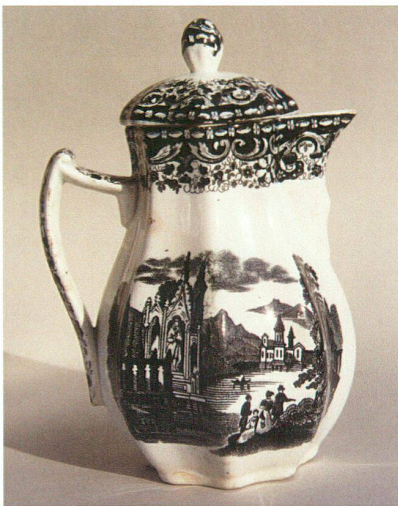


Abb. 158



Abb. 160



Abb. 162



Abb. 163



Abb. 164



Abb. 165

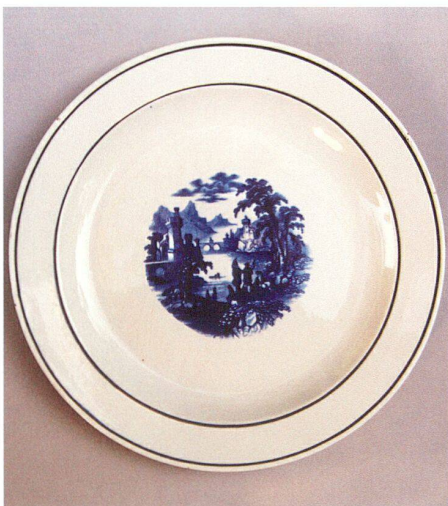


Abb. 166



Abb. 167



Abb. 168

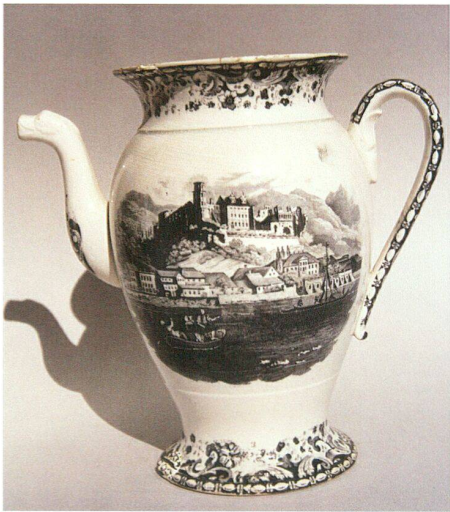


Abb. 169

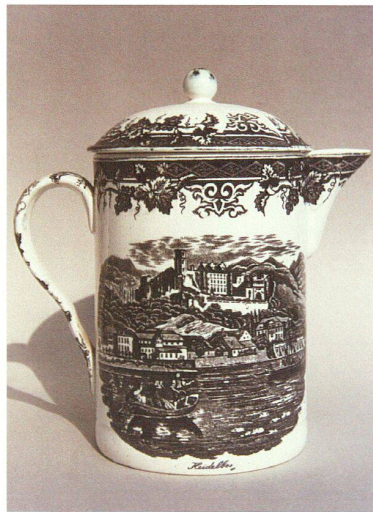


Abb. 171



Abb. 173

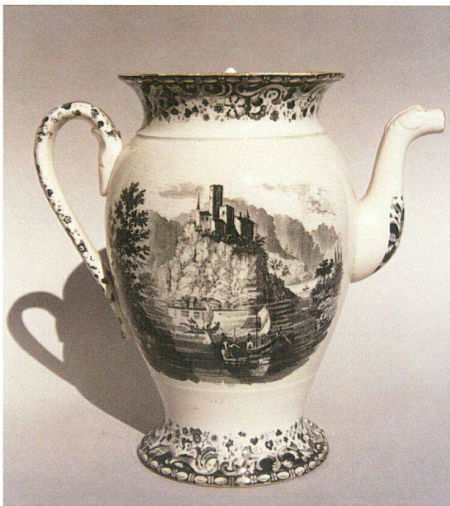


Abb. 170

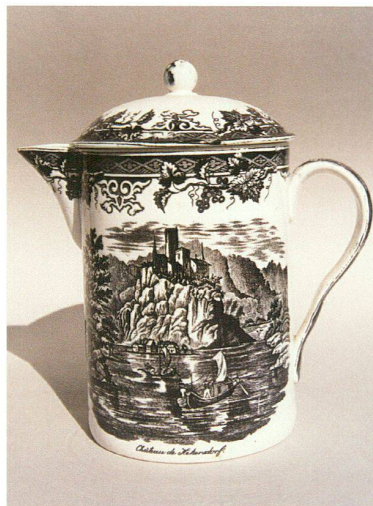


Abb. 172



Abb. 174



Abb. 175



Abb. 176



Abb. 177



Abb. 178



Abb. 179



Abb. 180



Abb. 181

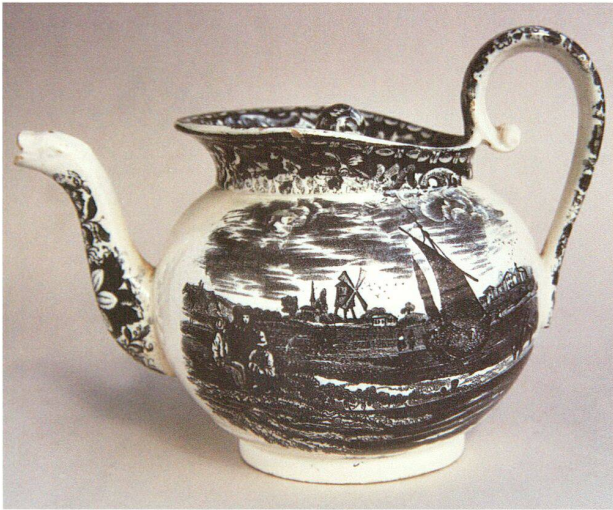


Abb. 182



Abb. 183

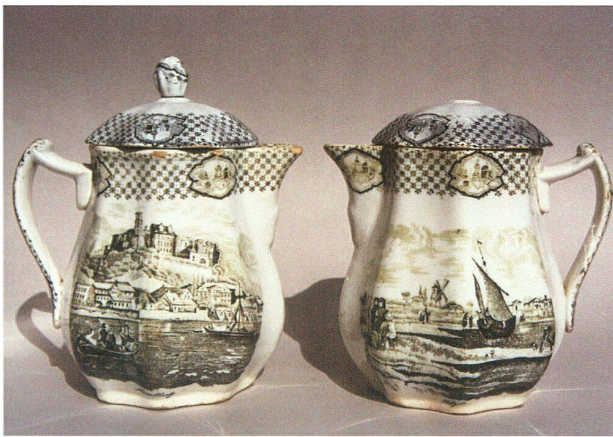


Abb. 184



Abb. 185



Abb. 186

Nr. 5441
 Mathias A. Maria Baumgarten
 Saxholz Tübingen
 geb. 6. Dez. 1843 gest. 31. Jan. 1928.
 Vermittelt von der Familie - (Vain)
 Josef Anton Baumgarten Saxholz
 (1805 - 1884)

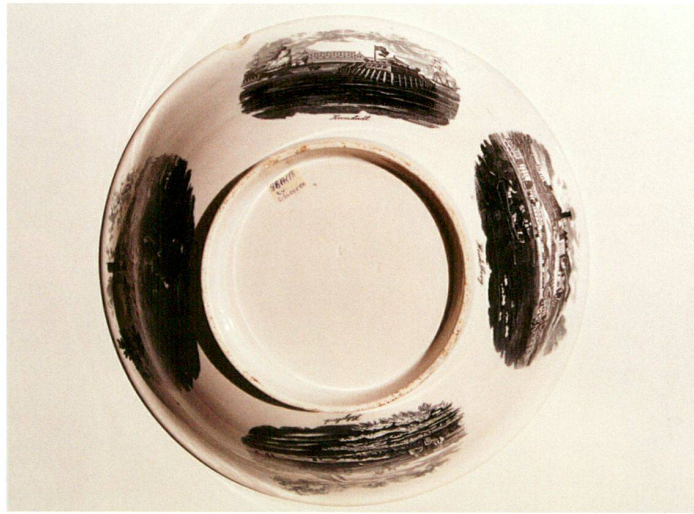


Abb. 187



Abb. 188



Abb. 189



Abb. 190



Abb. 191



Abb. 192



Abb. 195



Abb. 193



Abb. 196



Abb. 194



Abb. 197



Abb. 198



Abb. 199



Abb. 200



Abb. 201



Abb. 202



Abb. 203



Abb. 204



Abb. 205



Abb. 206

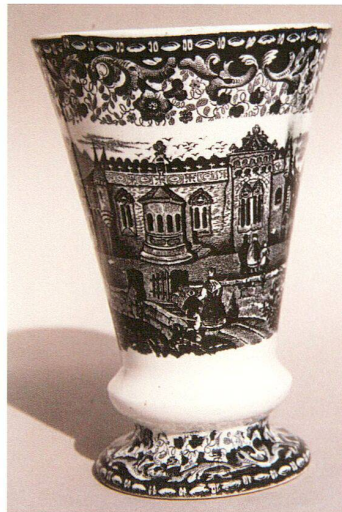


Abb. 207

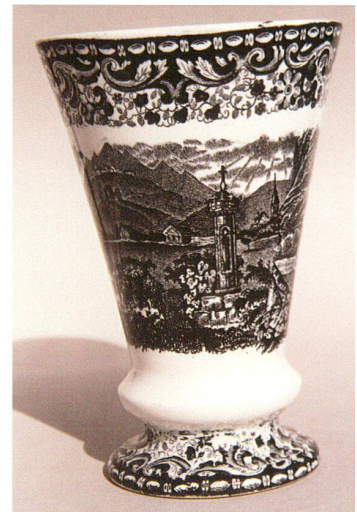


Abb. 208



Abb. 209



Abb. 210

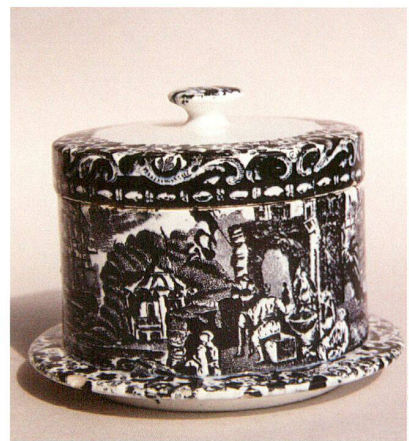


Abb. 211

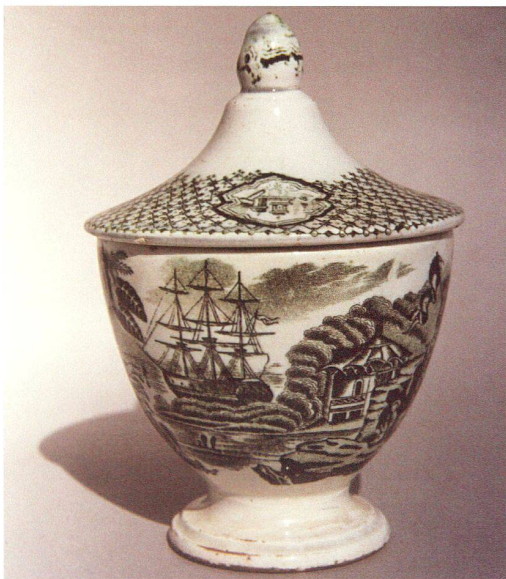


Abb. 212

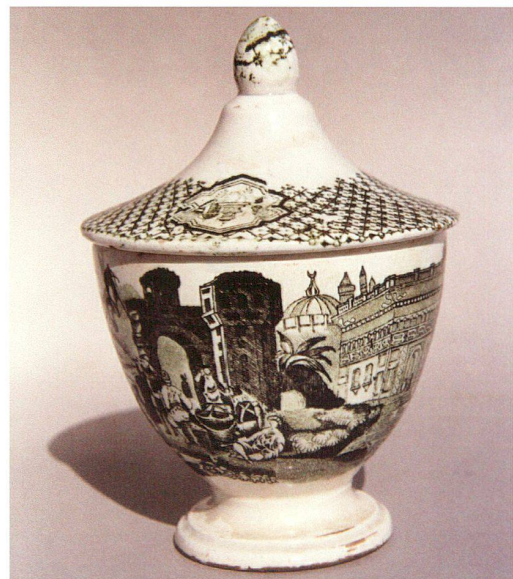


Abb. 213

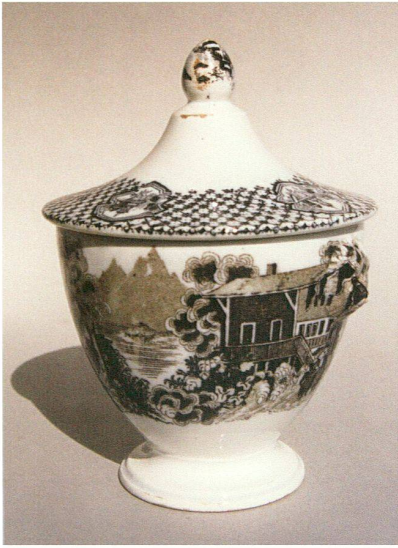


Abb. 214

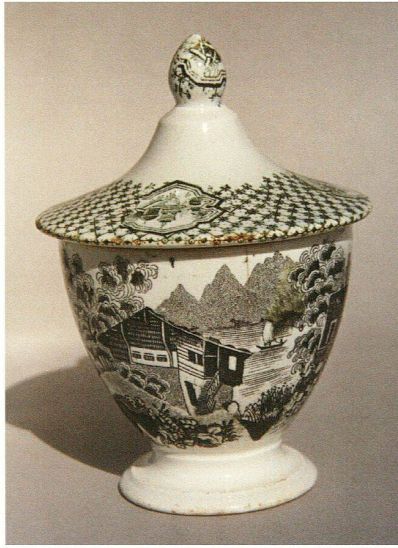


Abb. 215

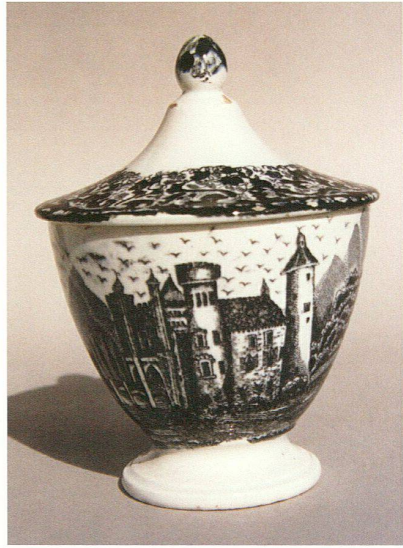


Abb. 216

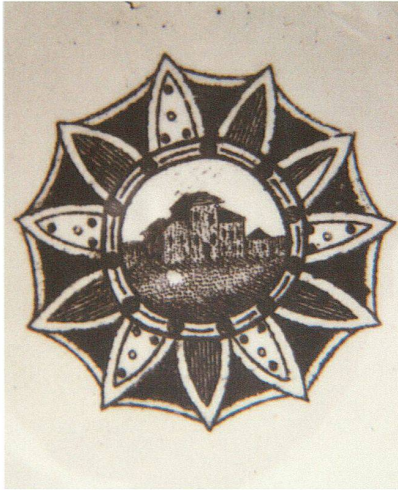


Abb. 220



Abb. 221

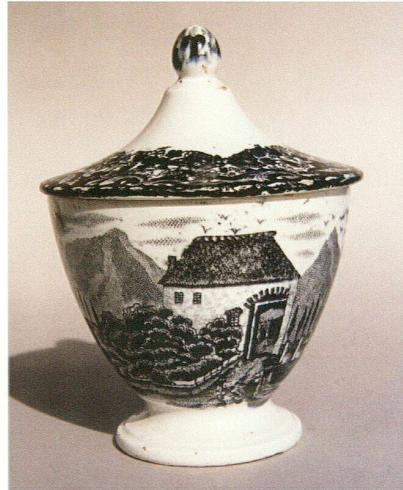


Abb. 217



Abb. 218

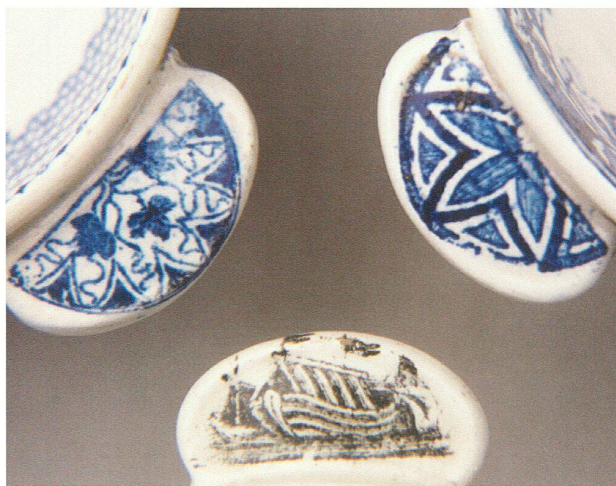


Abb. 219

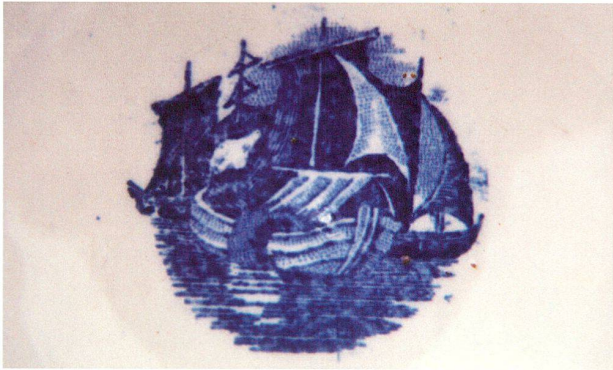


Abb. 222

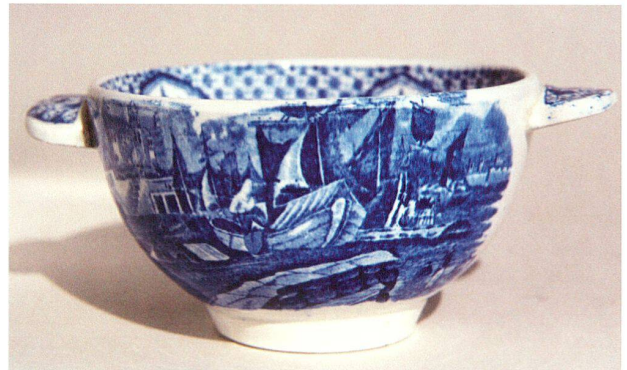


Abb. 223



Abb. 224



Abb. 225

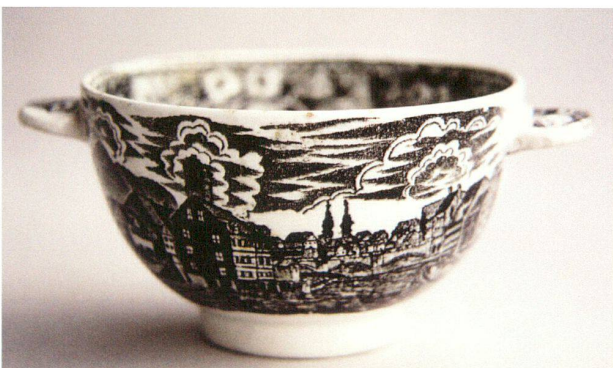


Abb. 226



Abb. 227

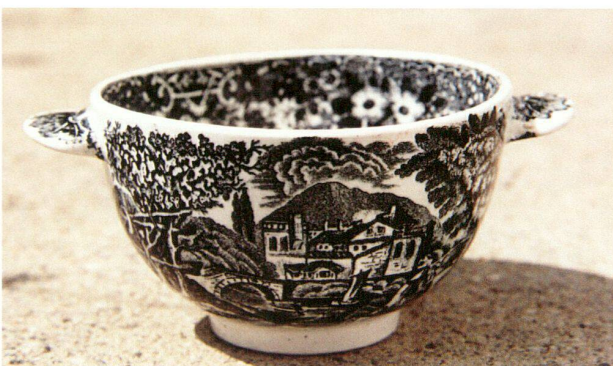


Abb. 228

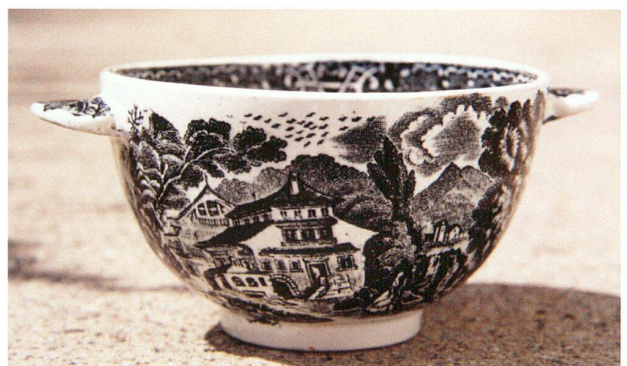


Abb. 229

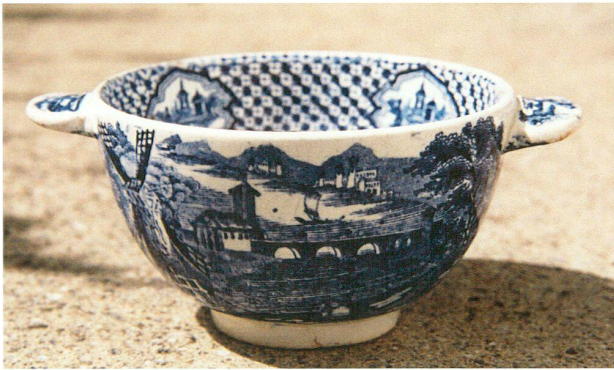


Abb. 230



Abb. 233

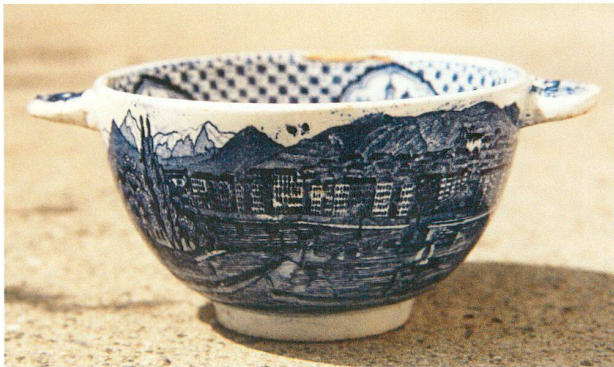


Abb. 231



Abb. 235



Abb. 232



Abb. 236

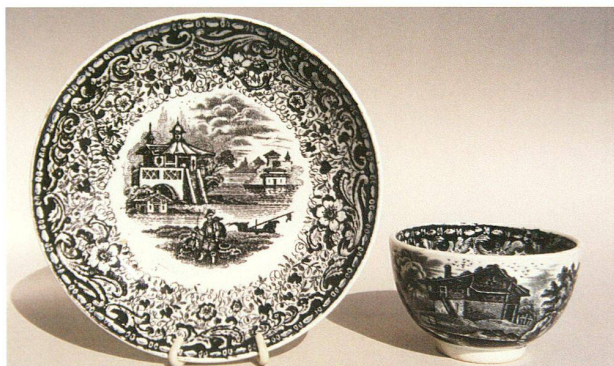


Abb. 234



Abb. 237



Abb. 240



Abb. 238



Abb. 239



Abb. 241



Abb. 242



Abb. 243



Abb. 244



Abb. 245



Abb. 246



Abb. 247



Abb. 248



Abb. 250



Abb. 249



Abb. 251



Abb. 252



Abb. 256



Abb. 253



Abb. 255



Abb. 258



Abb. 259



Abb. 257



Abb. 260



Abb. 254



Abb. 261



Abb. 264



Abb. 263



Abb. 262



Abb. 265



Abb. 266



Abb. 267



Abb. 268



Abb. 270



Abb. 269



Abb. 271



Abb. 272



Abb. 275



Abb. 273



Abb. 276



Abb. 274



Abb. 277



Abb. 278



Abb. 279



Abb. 280



Abb. 281

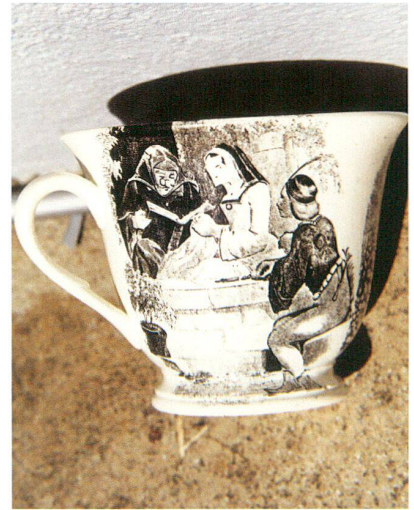


Abb. 282



Abb. 283



Abb. 284



Abb. 285



Abb. 286



Abb. 287



Abb. 288



Abb. 289



Abb. 290



Abb. 291



Abb. 292



Abb. 293



Abb. 294



Abb. 295



Abb. 296



Abb. 297



Abb. 298



Abb. 299

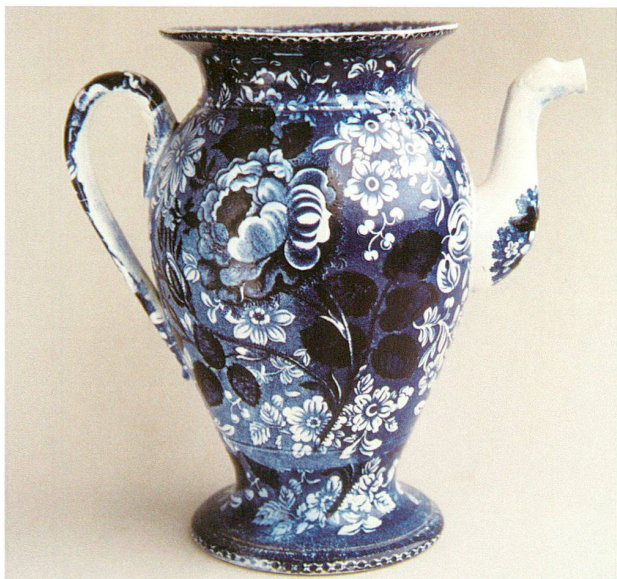


Abb. 300



Abb. 302



Abb. 301



Abb. 303



Abb. 304



Abb. 306



Abb. 305



Abb. 307



Abb. 308

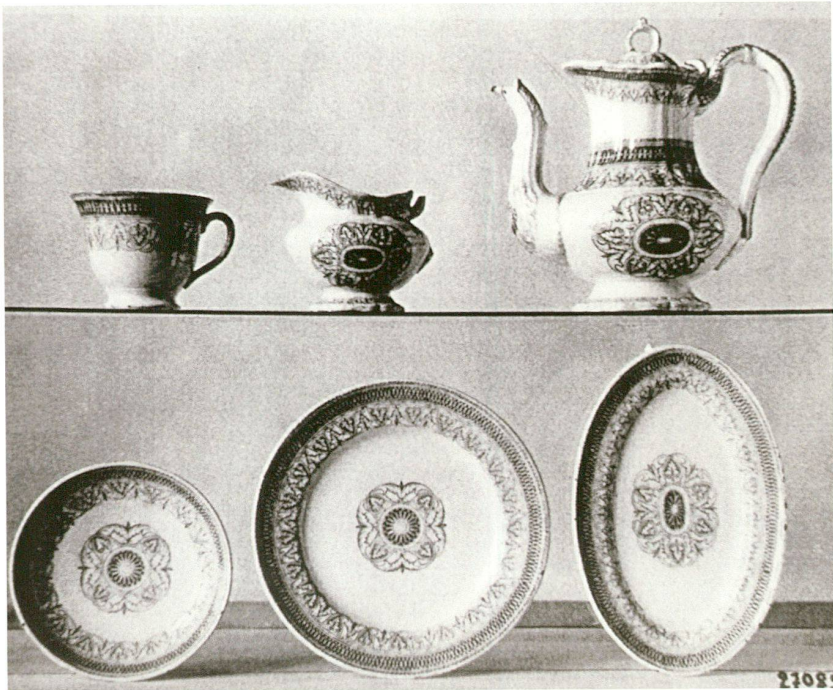


Abb. 309

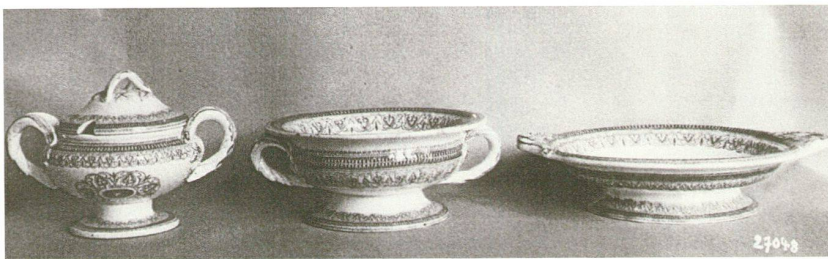


Abb. 310



Abb. 311