

**Zeitschrift:** Mittheilungen schweizerischer Ingenieure und Architekten : auf  
Veranstaltung des Vereins Schweizerischer Ingenieure und Architekten

**Herausgeber:** J.H. Kronauer

**Band:** 1 (1853)

**Heft:** 1-2

**Anhang:** Tafeln

**Autor:** [s.n.]

### **Nutzungsbedingungen**

Die ETH-Bibliothek ist die Anbieterin der digitalisierten Zeitschriften. Sie besitzt keine Urheberrechte an den Zeitschriften und ist nicht verantwortlich für deren Inhalte. Die Rechte liegen in der Regel bei den Herausgebern beziehungsweise den externen Rechteinhabern. [Siehe Rechtliche Hinweise.](#)

### **Conditions d'utilisation**

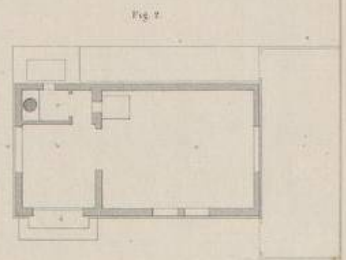
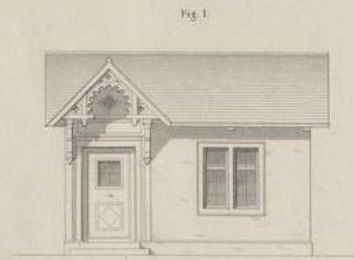
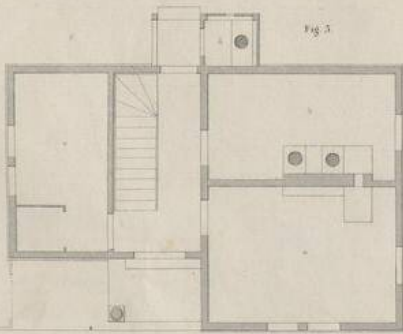
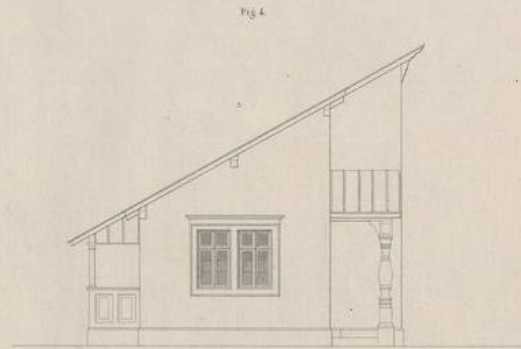
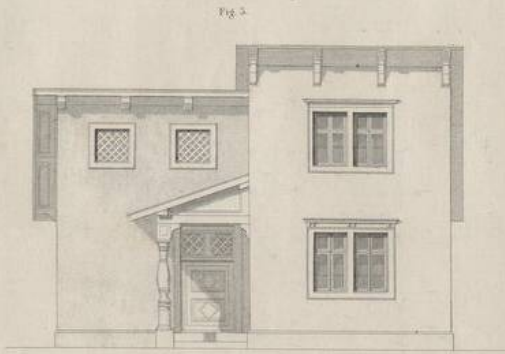
L'ETH Library est le fournisseur des revues numérisées. Elle ne détient aucun droit d'auteur sur les revues et n'est pas responsable de leur contenu. En règle générale, les droits sont détenus par les éditeurs ou les détenteurs de droits externes. [Voir Informations légales.](#)

### **Terms of use**

The ETH Library is the provider of the digitised journals. It does not own any copyrights to the journals and is not responsible for their content. The rights usually lie with the publishers or the external rights holders. [See Legal notice.](#)

**Download PDF:** 02.02.2025

**ETH-Bibliothek Zürich, E-Periodica, <https://www.e-periodica.ch>**



Entworfen v. J. H. Krenner

Lith. Anstalt v. J. Wurster u. Comp. in Winterthur

BAHNWARTHÄUSER.



Fig. 1

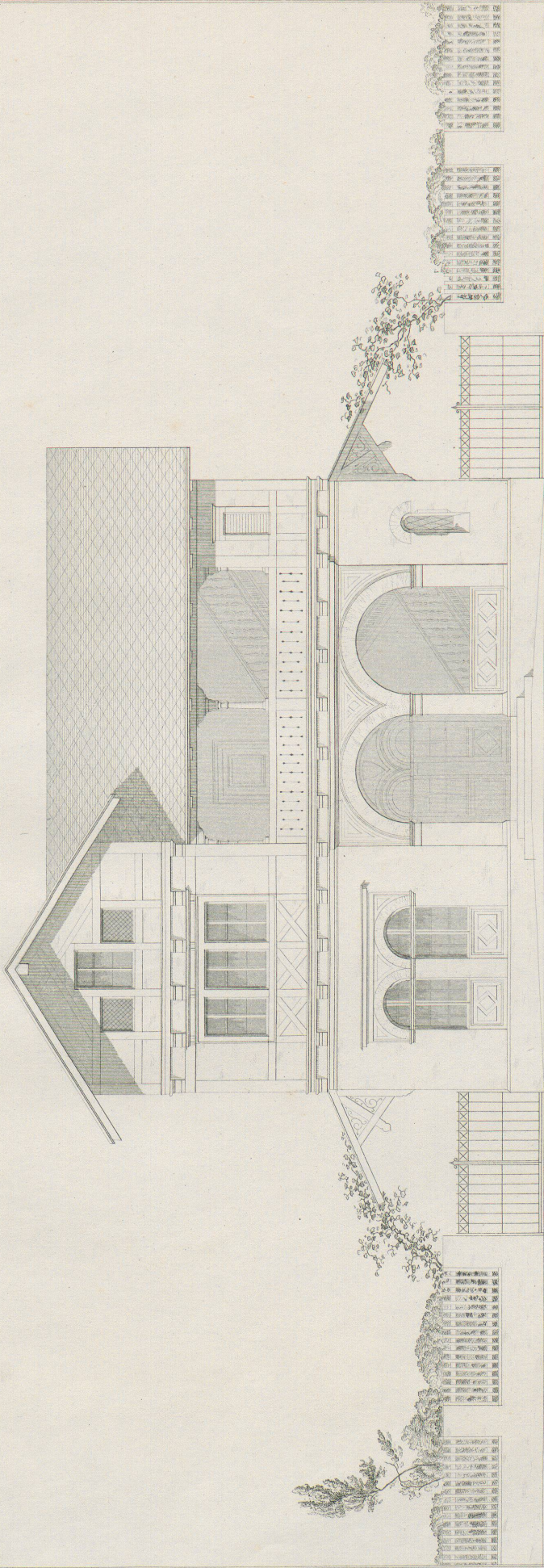
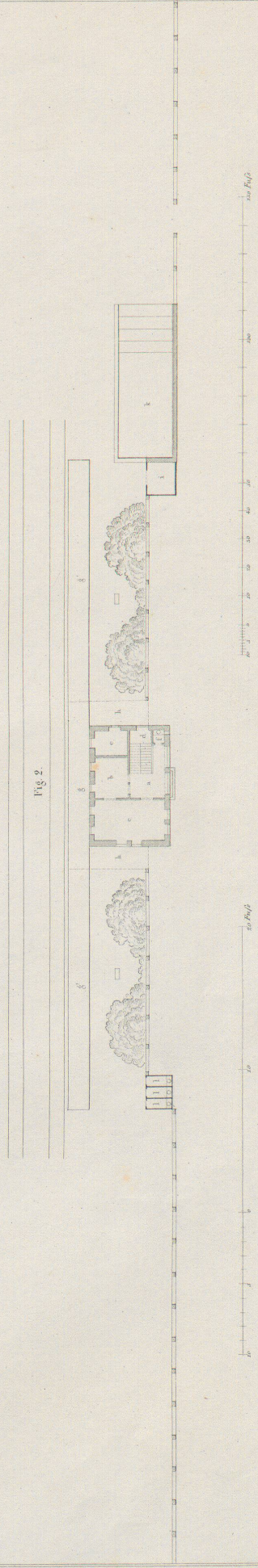


Fig. 2



STATIONSHAUS ZWEITEN RANGES.  
 (für den Cant. Thurgau.)



Fig. 1.

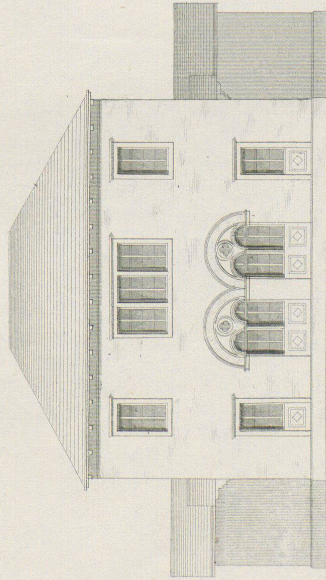


Fig. 2.

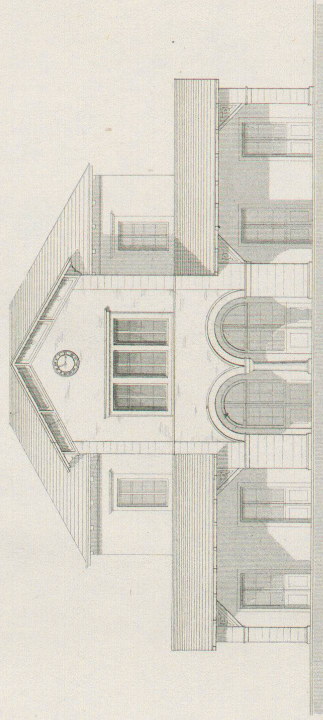
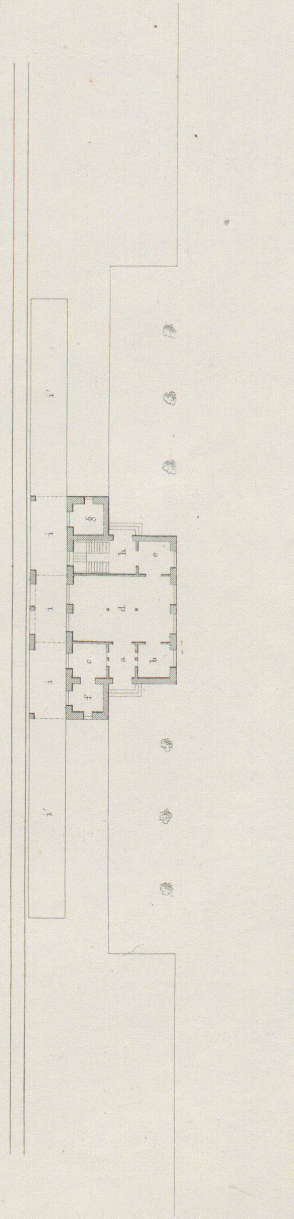


Fig. 3.



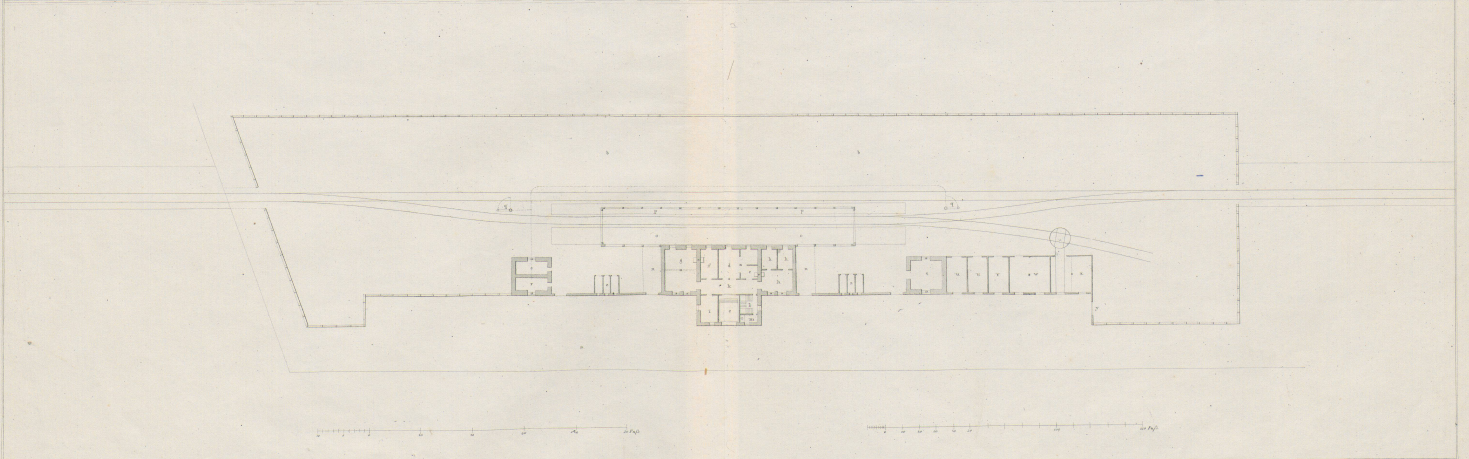
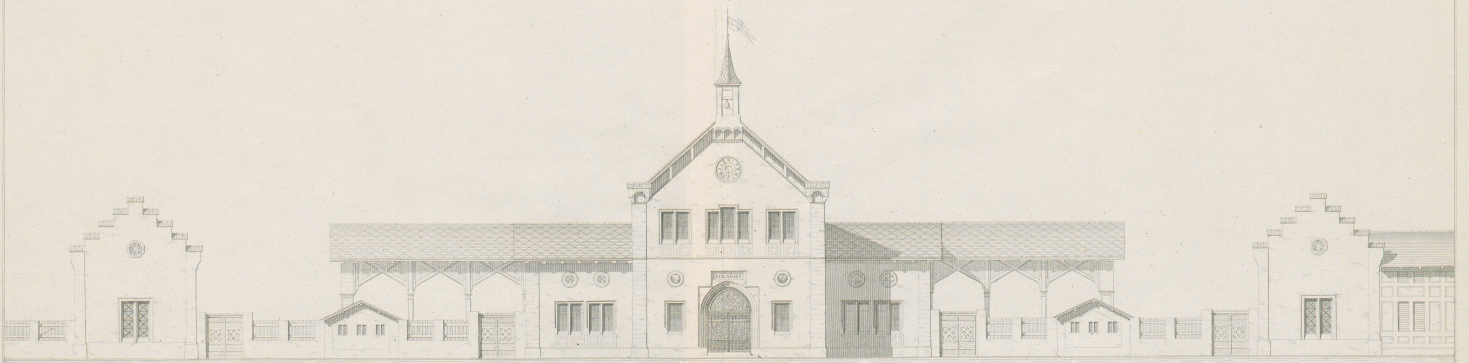
Masstab zu Fig. 1 u. 2



Masstab zu Fig. 3.







Verfertigt von J. B. Krause

BAHNHOF FÜR WEINFELDEN

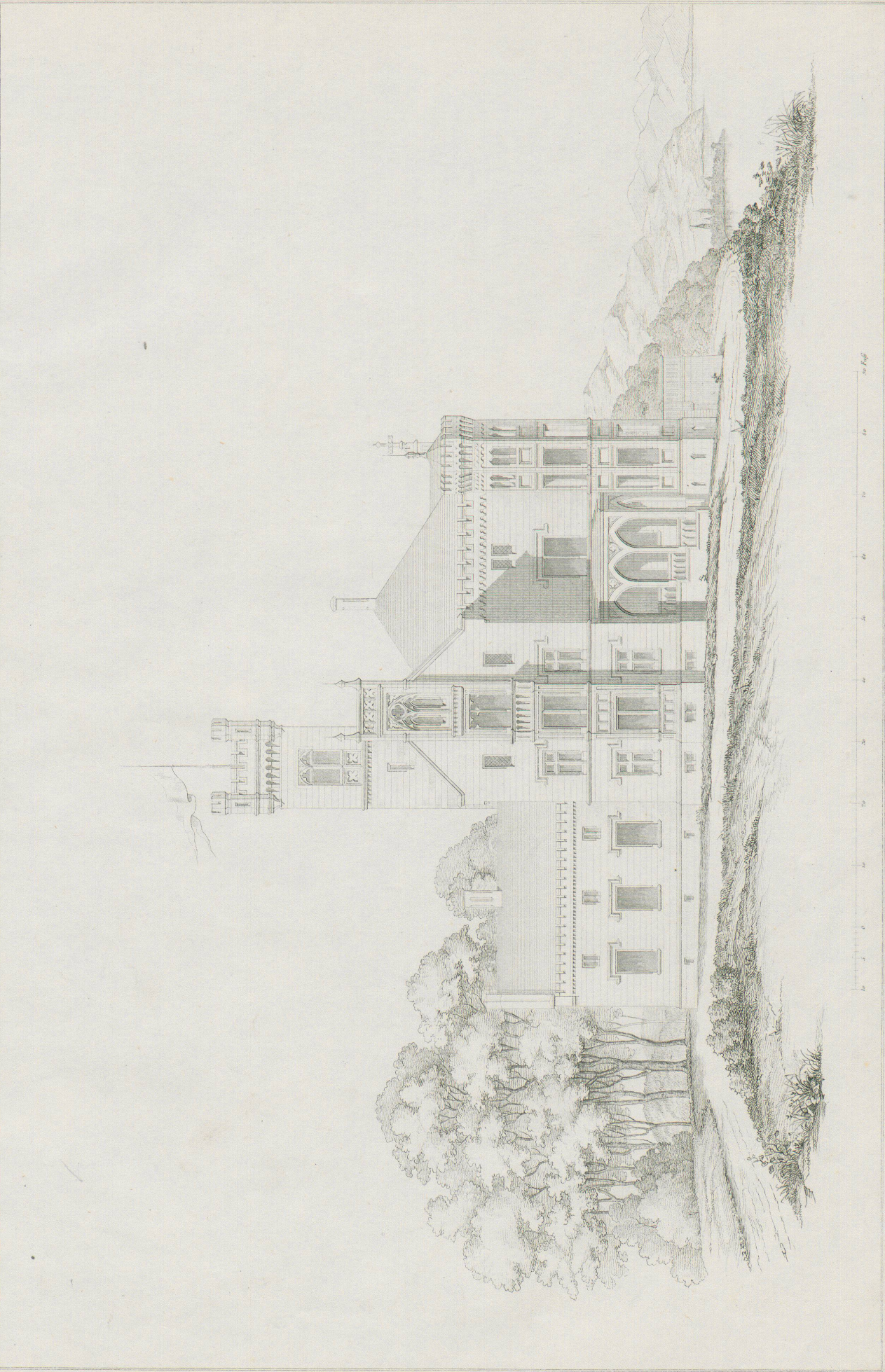
Leh. Architekt u. Baumeister in Wien





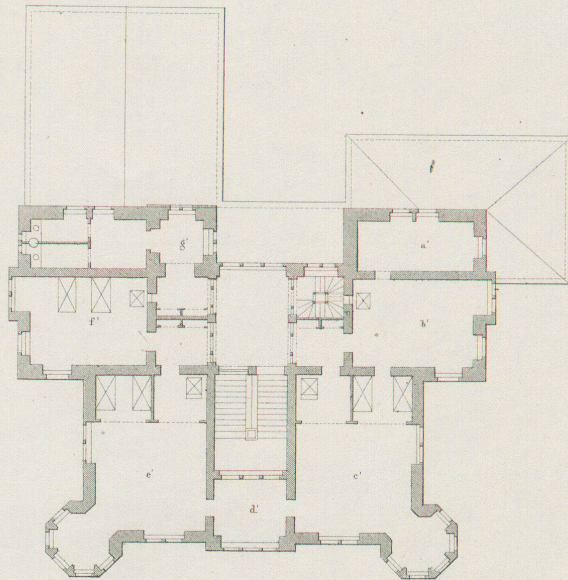
PROJECT ZU EINEM KLEINEN SCHLOSSE.  
bei Lindau am Bodensee.





PROJECT ZU EINEM KLEINEN SCHLOSSE.  
bei Lindau am Bodensee

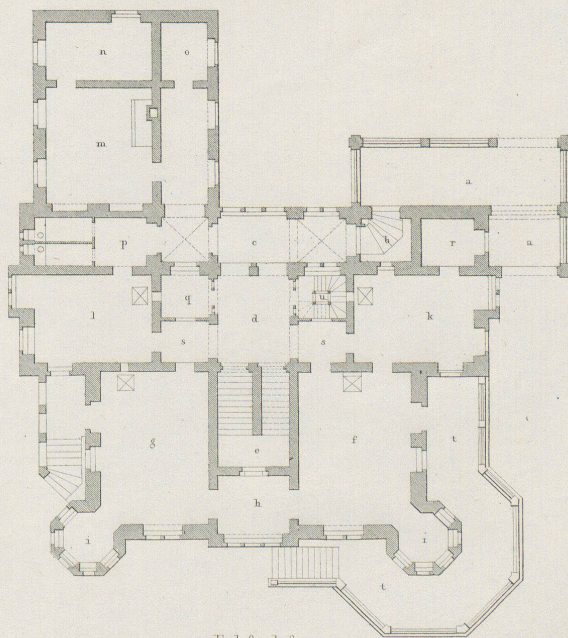




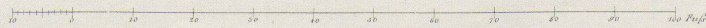
Erster Stock

- a Bedeckte Unterfahrt.
- b Eingang.
- c Corridor.
- d Vestibule.
- e Haupttreppe.
- f Salon.
- g Speisezimmer.
- h Cabinet.
- i Ecker.
- k Wohnzimmer.
- l Diensthofstube.
- m Küche.
- n Speisekammer.
- o Bedientenzimmer.

- p Abtritt.
- q Garderobe.
- r Cabinet.
- s Passage.
- t Terrasse.
- u Diensttreppe.
- a' Bibliothek.
- b' Schreibzimmer.
- c' Schlafzimmer d. Herrschaft.
- d' Cabinet.
- e' Fremdenzimmer.
- f' id.
- g' Thurm.

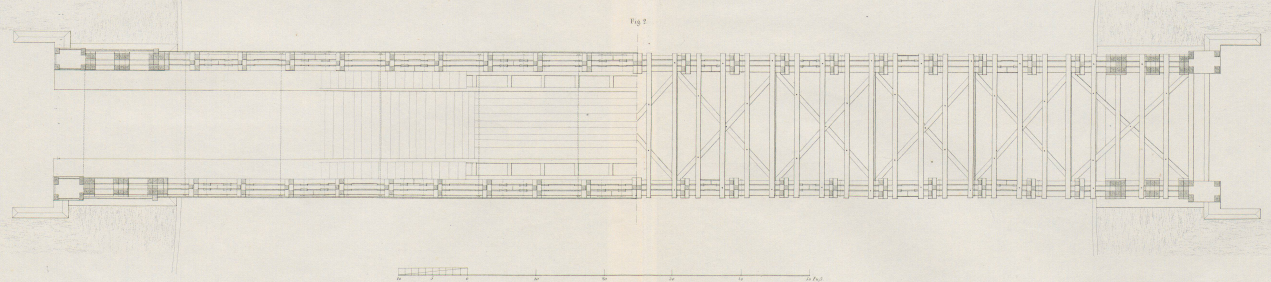
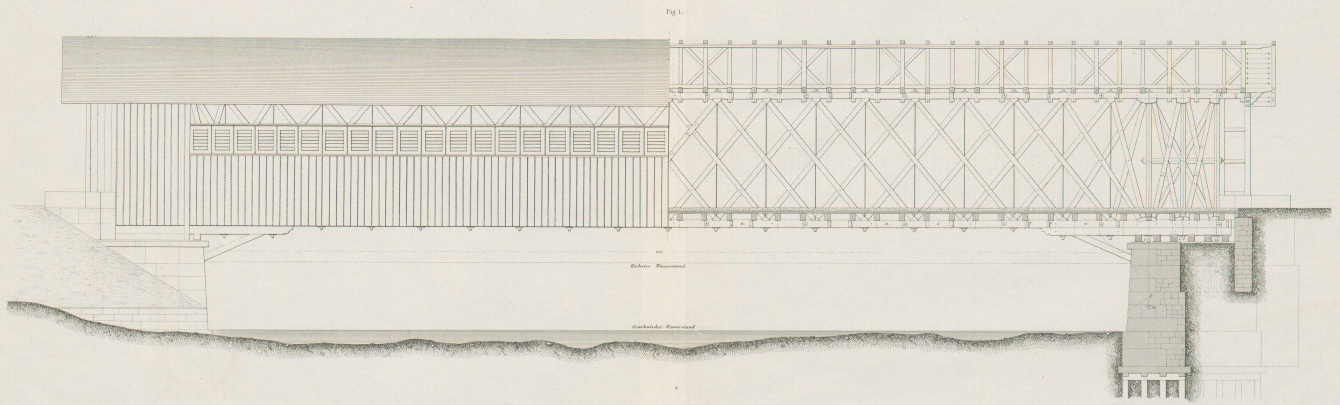


Erd-Geschoß



*1/300 d. v. J. v.*





Erzeugt von J. B. Krieger

Leit. Bauart v. J. B. Krieger u. Comp. in Wien

GITTERBRÜCKE IX ADLISCHWEIL.



Fig. 4.

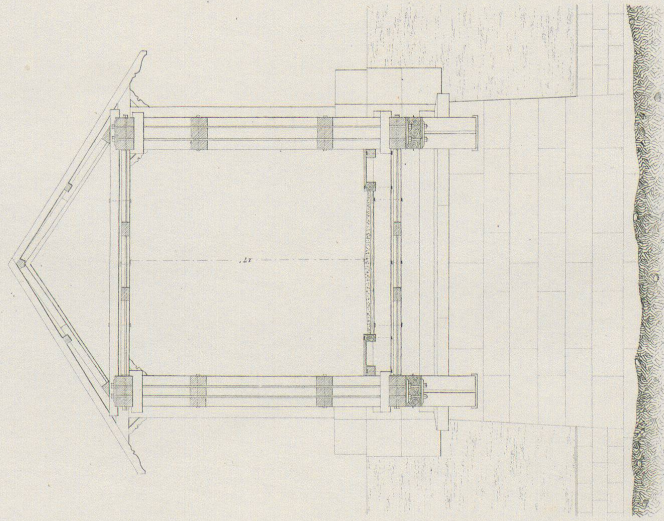


Fig. 5.

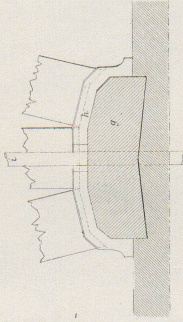
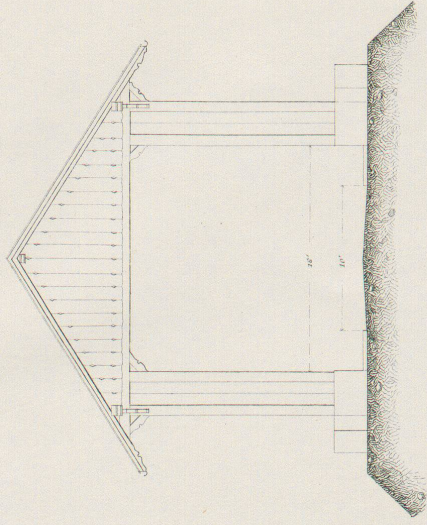


Fig. 7.

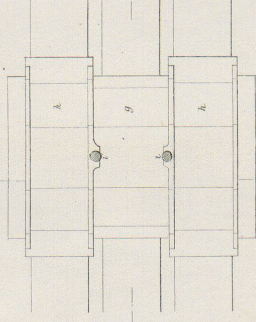


Fig. 8.

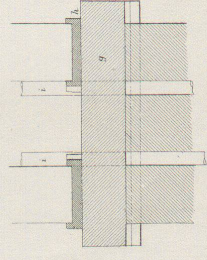


Fig. 9.

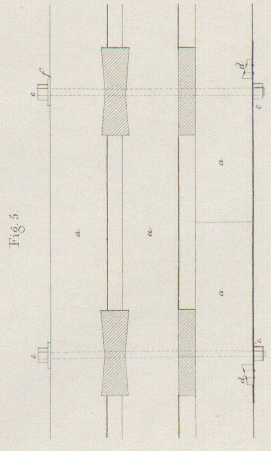


Fig. 5.

Masstab zu Fig. 5 u. 6

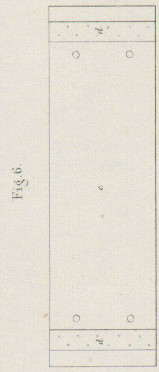
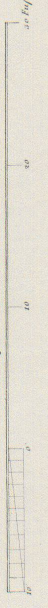


Fig. 6.

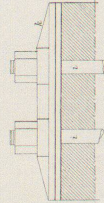


Fig. 10.

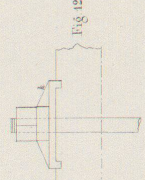


Fig. 11.

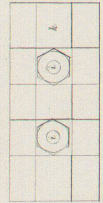


Fig. 12.

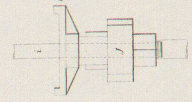


Fig. 13.

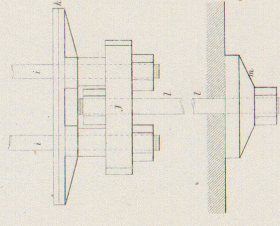


Fig. 14.

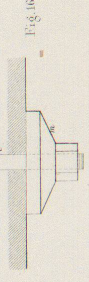


Fig. 16.

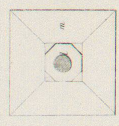
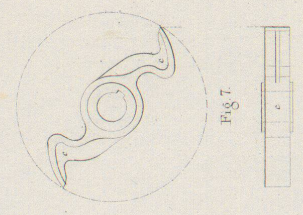
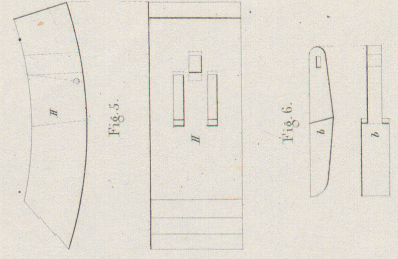
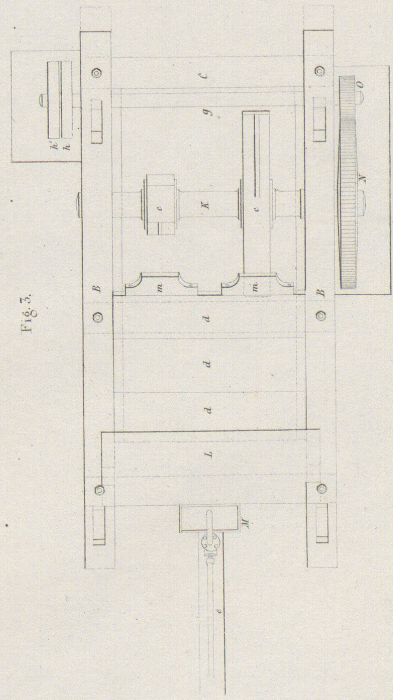
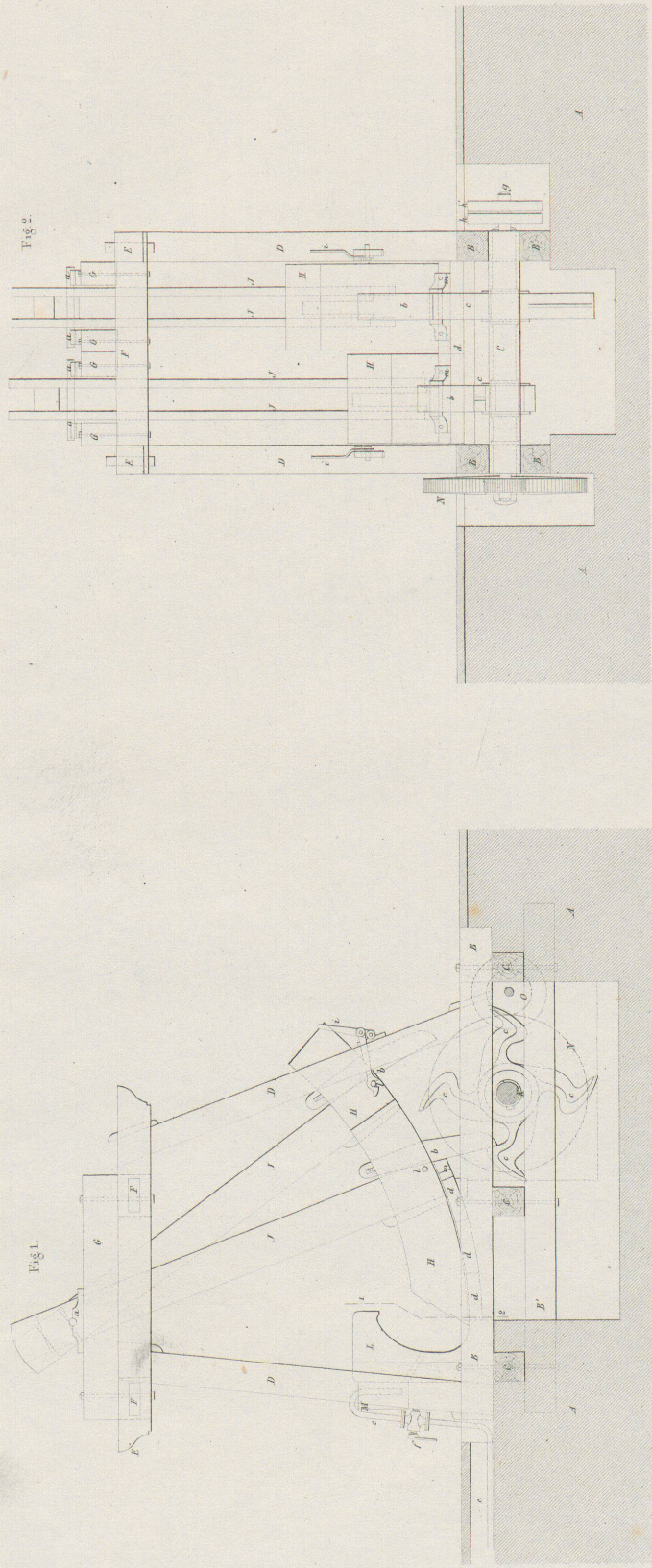


Fig. 17.

Masstab zu Fig. 5-17.







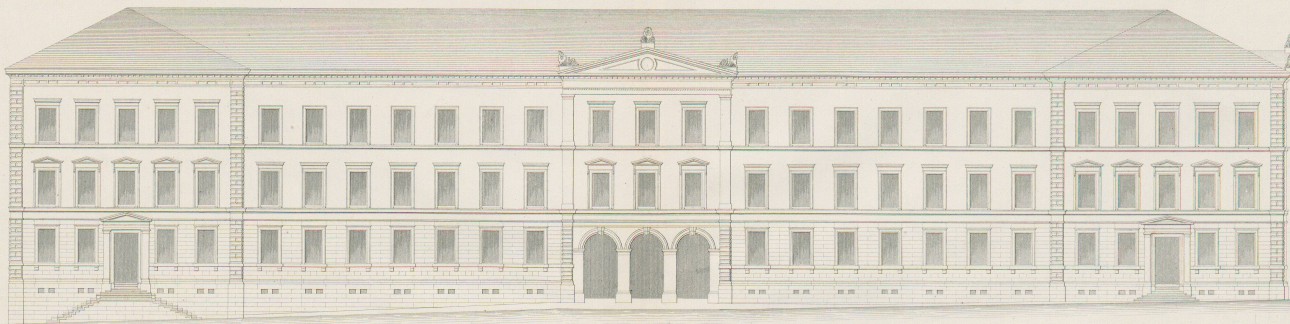
Schwarz Pap.

Lith. Anstalt v. J. Wurster u. Comp. in Winterthur

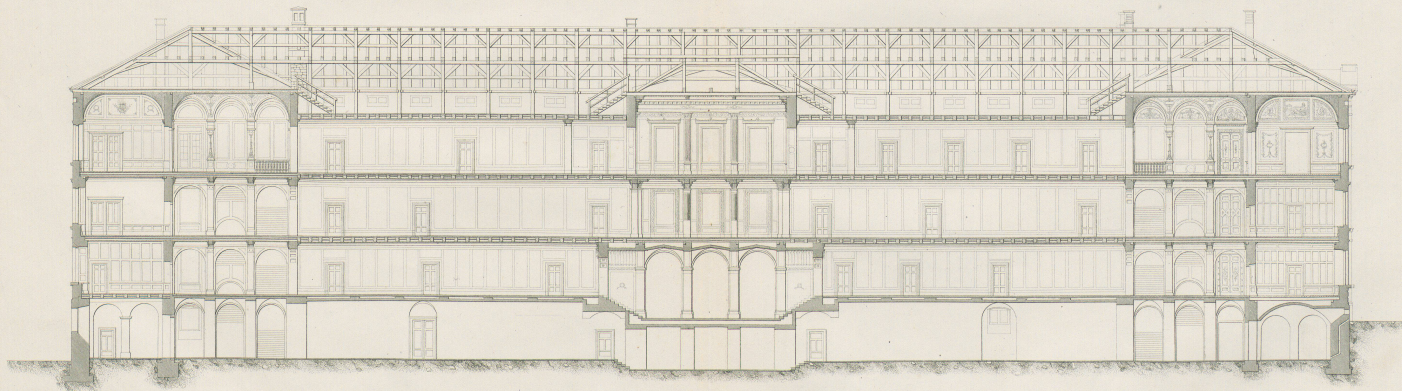
WASCHMASCHINE ODER WALKE FÜR TÜCHER.

Herausgegeben von J. H. Kriemler



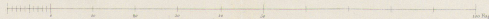


Hauptfacade (gegen Nord)

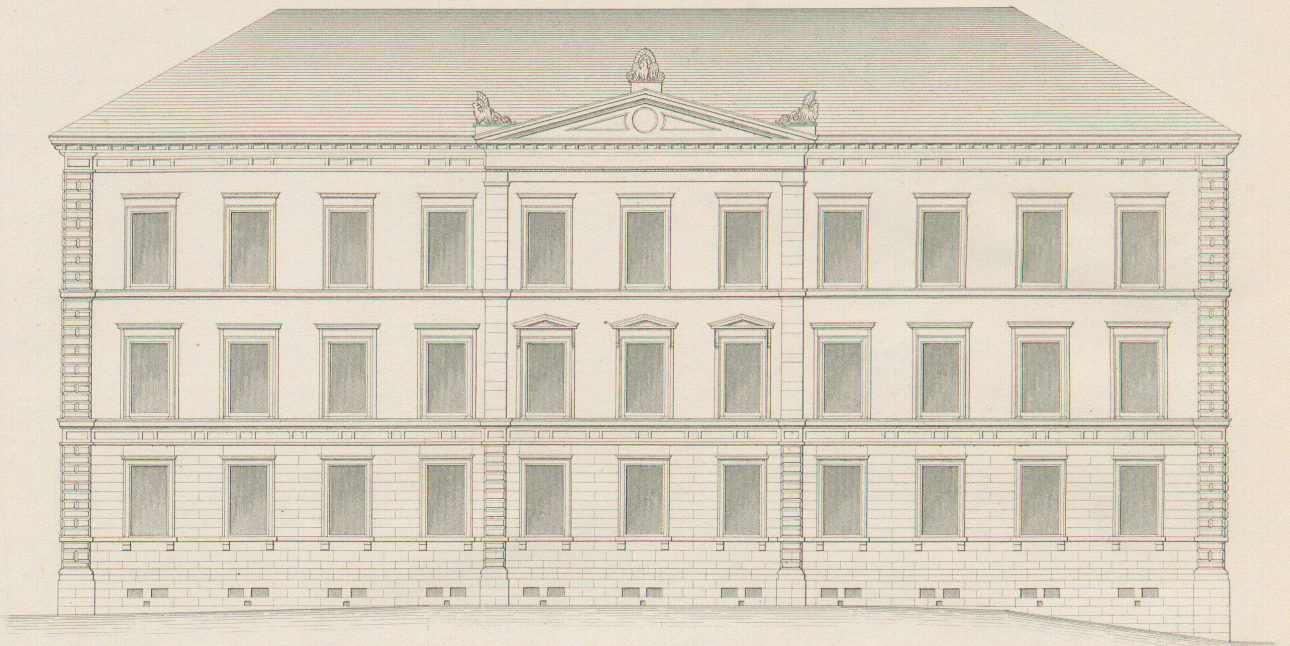


Längenschnitt durch die Mitte des Gebäudes

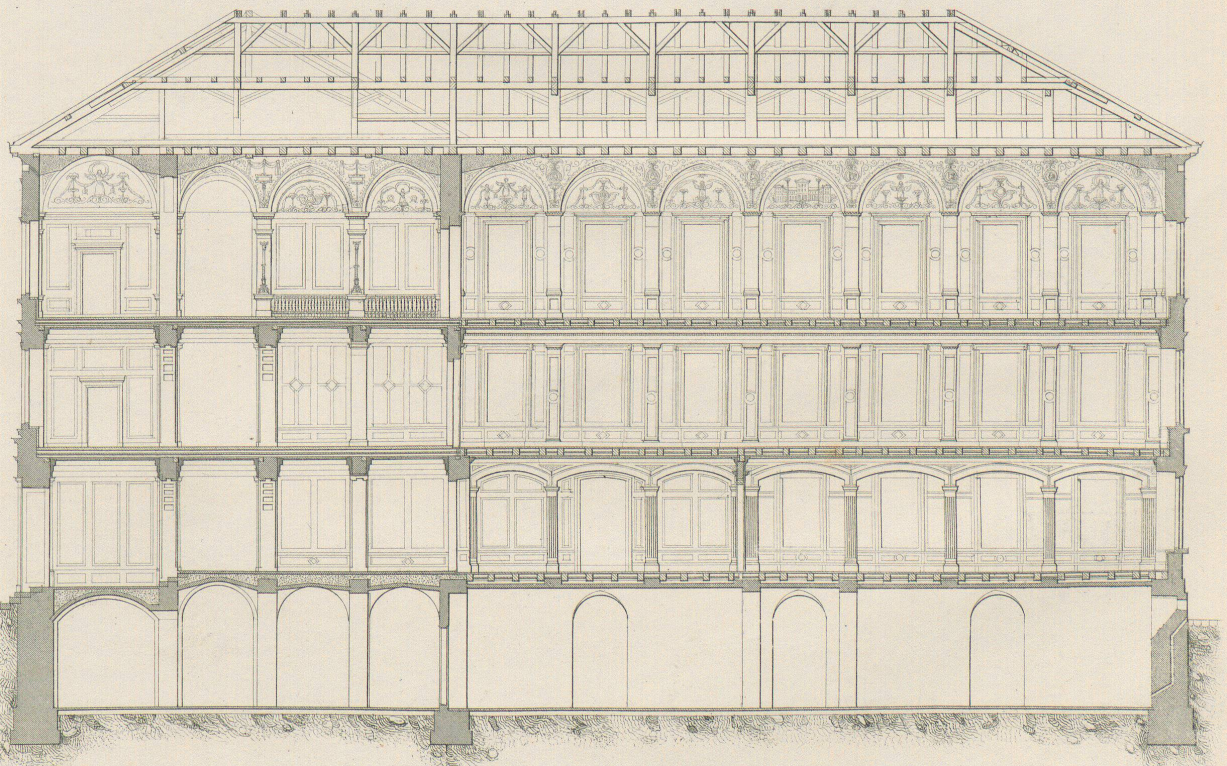
Masstab 1:100





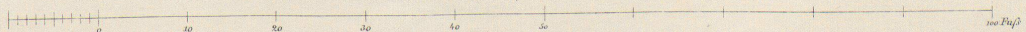


Seitenfàçade (gegen West)



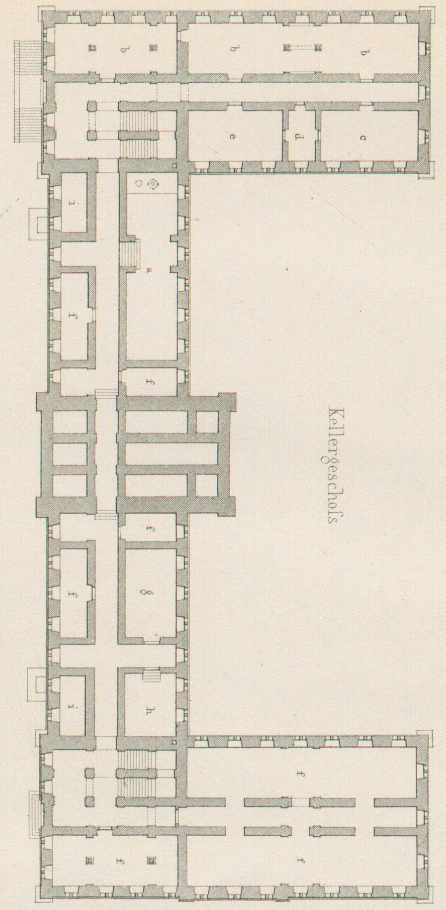
Längenschnitt durch den westl. Flügel.

Maßstab 1/200

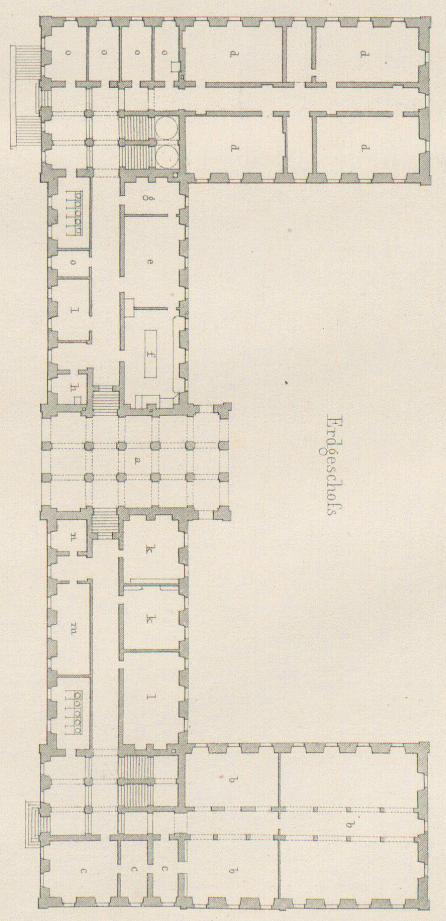




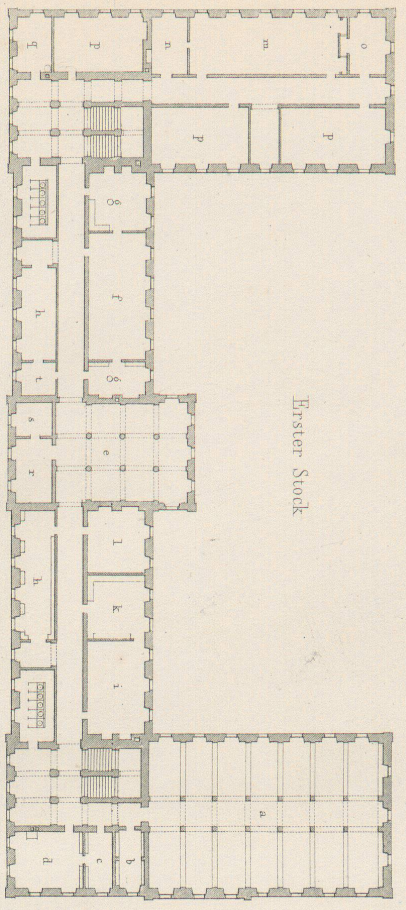
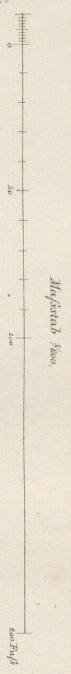
Grundpläne



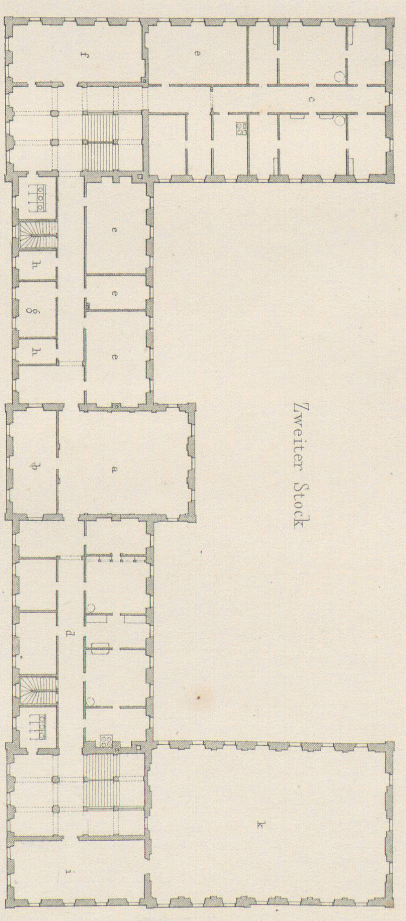
Kellergeschoss



Erdgeschoss



Erster Stock

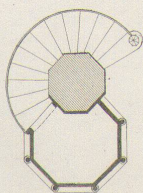
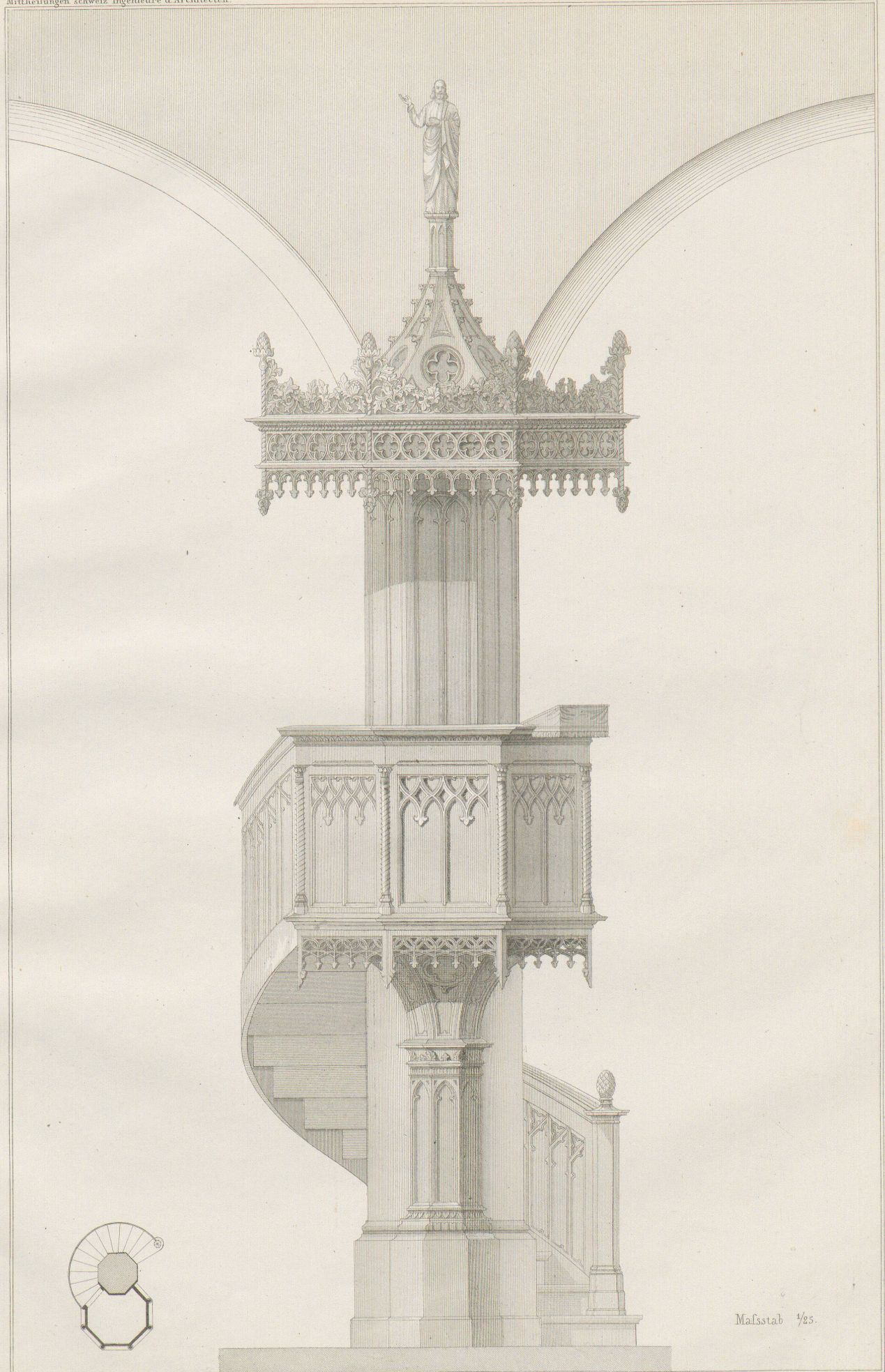


Zweiter Stock

SCHUL- UND BIBLIOTHEK GEBÄUDE IN S<sup>t</sup> GALLEN

VON F. W. KÜBLI.





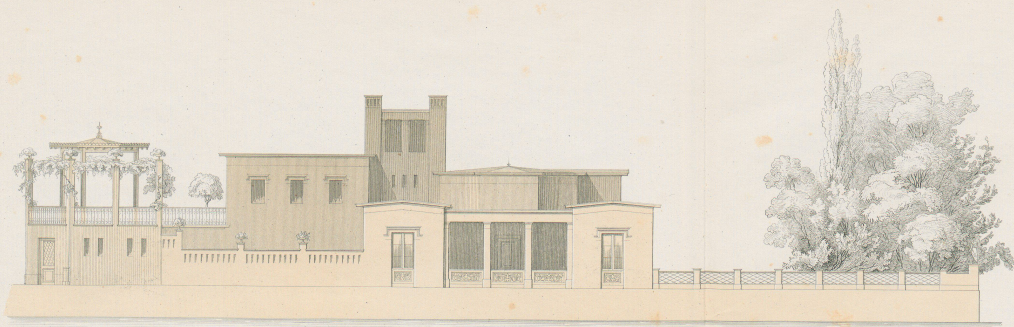
Maßstab 1/25.

Herausgegeben von J.H. Kronauer

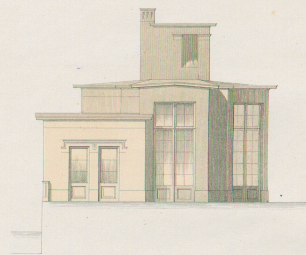
Lith. Anstalt v. J. Wurster u. Comp. in Winterthur.

KANZEL IN DER STADTKIRCHE ZU WINTERTHUR  
von Ferdinand Stadler.

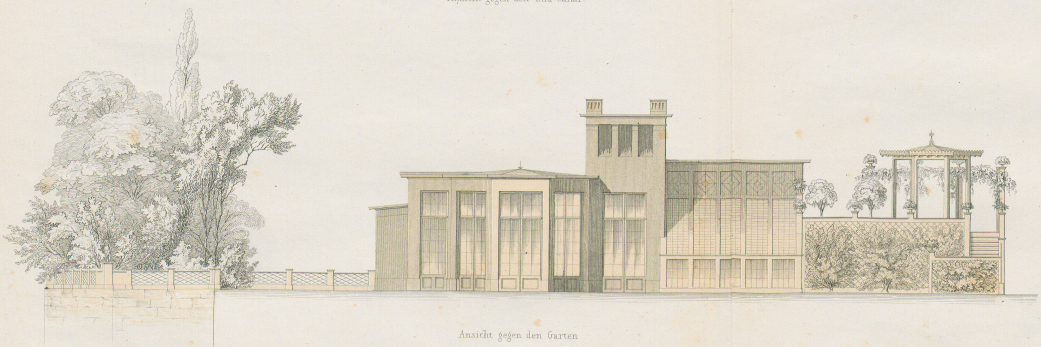




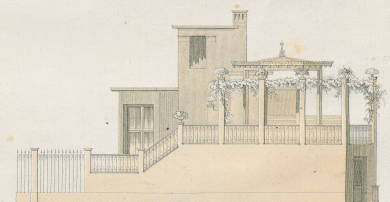
Ansicht gegen den Süd-Canal.



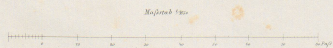
Gegen den Schanzengraben.



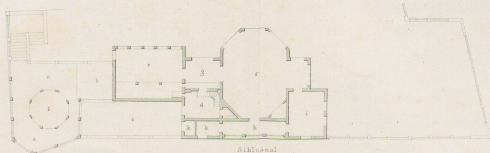
Ansicht gegen den Garten.



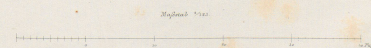
Gegen die Thalasse.



Maßstab 1:100



Südsüdwest Grundplan



Maßstab 1:100

Herausgegeben von J. H. Krenauer

ORANGERIE MIT KLEINEM GEMÄCHSHAUSE  
von J. Brechtner, Architect.

Lith. Anstalt v. J. Wurster u. Comp. in Wittenberg



# KARTE der Schweizerischen Centralbahn 1<sup>re</sup> Section Basel - Sissach.

Maßstab für die Karte und des Längsprofil.  
1:10000 für die Karte  
1:20000 für die Längen  
Maßstab zu den Situationsplänen.  
1:10000  
Die im Plan angezeichneten Höhen beziehen sich alle auf die Nullhöhe der Rhodanersee im Meer.



Herausgegeben von J. H. Knecht.



