

Zeitschrift: Pamphlet
Band: - (2008)
Heft: 11: Upper Rhine Delta : Master of Advanced Studies in Landscape Architecture 07/08

Artikel: Stabilizing counterbalance
Autor: Muldoon, Rupert
DOI: <https://doi.org/10.5169/seals-965590>

Nutzungsbedingungen

Die ETH-Bibliothek ist die Anbieterin der digitalisierten Zeitschriften. Sie besitzt keine Urheberrechte an den Zeitschriften und ist nicht verantwortlich für deren Inhalte. Die Rechte liegen in der Regel bei den Herausgebern beziehungsweise den externen Rechteinhabern. [Siehe Rechtliche Hinweise.](#)

Conditions d'utilisation

L'ETH Library est le fournisseur des revues numérisées. Elle ne détient aucun droit d'auteur sur les revues et n'est pas responsable de leur contenu. En règle générale, les droits sont détenus par les éditeurs ou les détenteurs de droits externes. [Voir Informations légales.](#)

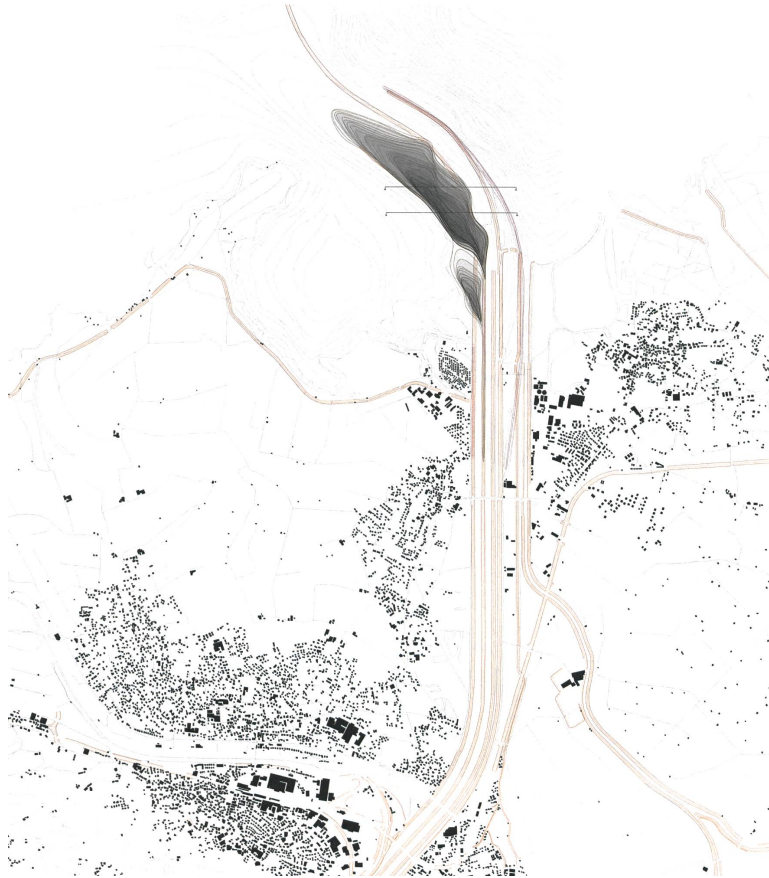
Terms of use

The ETH Library is the provider of the digitised journals. It does not own any copyrights to the journals and is not responsible for their content. The rights usually lie with the publishers or the external rights holders. [See Legal notice.](#)

Download PDF: 06.10.2024

ETH-Bibliothek Zürich, E-Periodica, <https://www.e-periodica.ch>

site plan



STABILIZING COUNTERBALANCE

Rupert Muldoon

This design proposal investigates the principles of land erosion and forming through sediment deposition with respect to the site's context. Water is released through the land in a manner that turns currently static dykes and reed beds into a more dynamic system of continuous flux and flow.

The intervention, which focuses on the mouth of the Rhine where river and lake water meet, allows for a greater amount of water to be released through the river's mouth at peak flow times. In order to achieve a balance of manmade and natural forces, the process of sedimentation on the inner curve of the river was sped through the mechanical harvesting of these sediments, forming a broad sediment zone articulated by phased shifts of the material.

The design effectively broadens the river's mouth into a wide body of water and sediment zones. While the

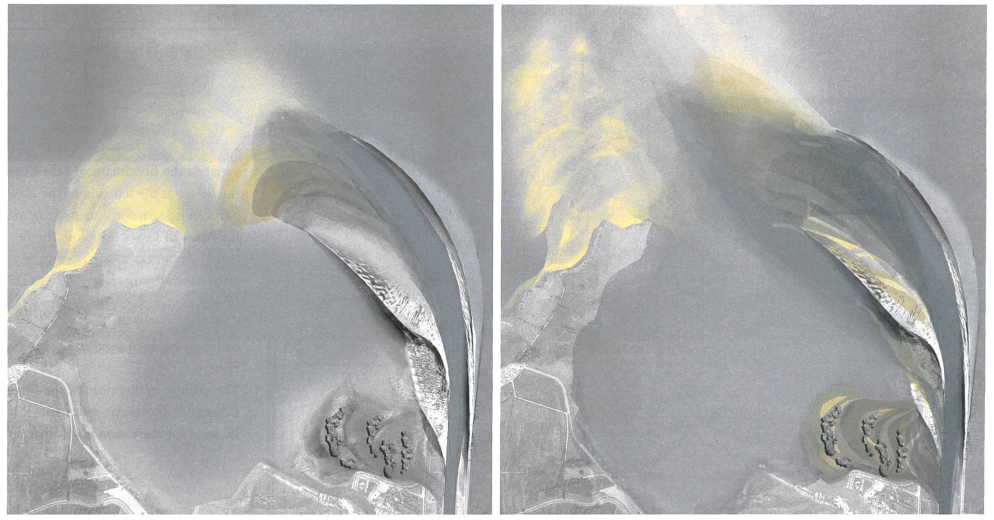
outer spine of the embankment is strengthened, the breaking of the inner embankment changes the flow of the water at the river's mouth so that more water is released at a slower velocity. This induces sedimentation on the inner curve to form a 'mount', its crest potentially reaching a height of 40 meters. The newly constructed geology becomes a time scale, where each year is marked by a successive layer of sediments. It will place the river mouth firmly on the map as a landmark – a destination. The new mount will make the transformation of a problem visible into a useful and diverse new landscape. The slow growth of the landscape will create its own history linked strongly to the place.

In the pastoral, preserved and static lands of the Rhine Delta a new landform will arise – one characterized by a series of intertwining landscapes and alternate

topographical model



ecologies. The topography and production of microclimates will, in turn, encourage a topology of vegetation to develop that emphasises the resulting changes in soil types and ground moisture. A diversified landscape will inspire people to discover how the place came to its current state and how it will continue to evolve.



plans showing winter and summer water levels and sediment dispersal



topographical section of intervention