

Indian species of the genus *Stollia* Ellenrieder (Heteroptera, Pentatomidae)

Autor(en): **Azim, M. Nayyar / Shafee, S. Adam**

Objektyp: **Article**

Zeitschrift: **Mitteilungen der Schweizerischen Entomologischen Gesellschaft =
Bulletin de la Société Entomologique Suisse = Journal of the
Swiss Entomological Society**

Band (Jahr): **57 (1984)**

Heft 2-3

PDF erstellt am: **22.07.2024**

Persistenter Link: <https://doi.org/10.5169/seals-402125>

Nutzungsbedingungen

Die ETH-Bibliothek ist Anbieterin der digitalisierten Zeitschriften. Sie besitzt keine Urheberrechte an den Inhalten der Zeitschriften. Die Rechte liegen in der Regel bei den Herausgebern.

Die auf der Plattform e-periodica veröffentlichten Dokumente stehen für nicht-kommerzielle Zwecke in Lehre und Forschung sowie für die private Nutzung frei zur Verfügung. Einzelne Dateien oder Ausdrucke aus diesem Angebot können zusammen mit diesen Nutzungsbedingungen und den korrekten Herkunftsbezeichnungen weitergegeben werden.

Das Veröffentlichen von Bildern in Print- und Online-Publikationen ist nur mit vorheriger Genehmigung der Rechteinhaber erlaubt. Die systematische Speicherung von Teilen des elektronischen Angebots auf anderen Servern bedarf ebenfalls des schriftlichen Einverständnisses der Rechteinhaber.

Haftungsausschluss

Alle Angaben erfolgen ohne Gewähr für Vollständigkeit oder Richtigkeit. Es wird keine Haftung übernommen für Schäden durch die Verwendung von Informationen aus diesem Online-Angebot oder durch das Fehlen von Informationen. Dies gilt auch für Inhalte Dritter, die über dieses Angebot zugänglich sind.

Indian species of the genus *Stollia* ELLENRIEDER (Heteroptera, Pentatomidae)

M. NAYYAR AZIM & S. ADAM SHAFEE

Section of Entomology, Department of Zoology, Aligarh Muslim University, Aligarh, India

The genus *Stollia* ELLENRIEDER is redefined. *S. spinosa* sp. n. is described and illustrated. *S. guttiger* (THUNBERG) is also studied and illustrated. A key for the separation of Indian species is given. Material deposited in the Zoological Museum, Aligarh Muslim University, Aligarh.

Genus *Stollia* ELLENRIEDER

Stollia ELLENRIEDER, 1862: 149.

Type-species: *S. filiginosa* ELLENRIEDER.

Bainbriggeanus DISTANT, 1918: 135 (LESTON, 1956: 702).

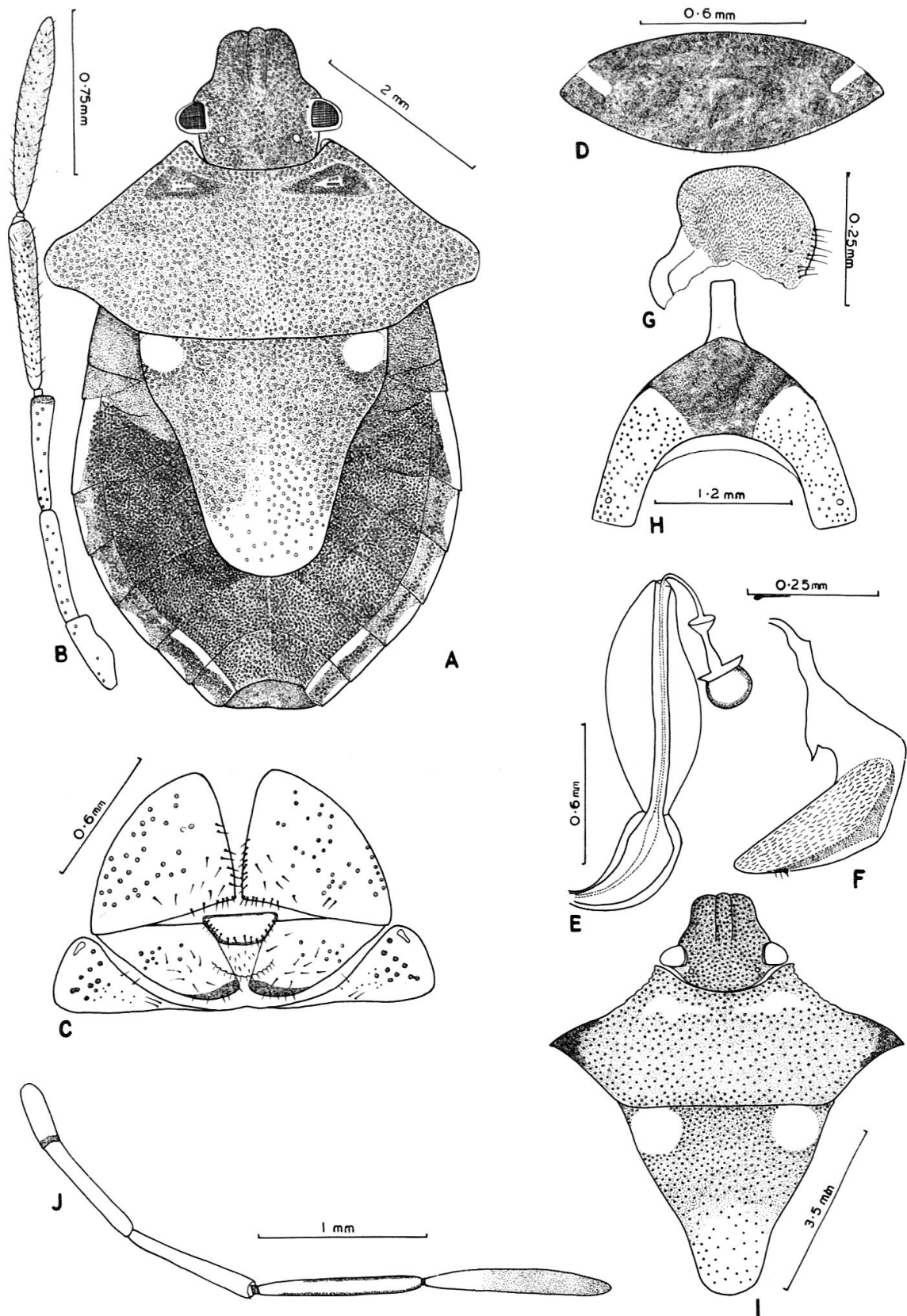
Type-species: *Bainbriggeanus fletcheri* DISTANT.

Diagnosis: Head distinctly wider than long; juga as long as tylus, lateral margins sinuate before eyes; rostrum extending slightly beyond hind coxae; bucculae shorter than first rostral segment; antennae 5-segmented, first segment not reaching apex of head; scutellum broadly rounded apically; mesosternum sulcated with indistinct longitudinal carina medially; metasternal scent gland ostiole with peritreme small, apex of which slightly raised and directed anteriorly, evaporatoria well developed; abdominal venter unsulcated and unarmed at base; last tergum in female (fig. D) with anterior and posterior margins convex. *Female genitalia*: external plates (fig. C), first gonocoxae broadly triangular, paratergites 8th and 9th triangular; spermatheca (fig. E), dilation deeply constricted at proximal one third, bulb semicircular without tubular outgrowths. *Male genitalia*: Claspers (fig. F) L-shaped and with fine ridges; pseudoclaspers (fig. G) spatulate; subgenital plate (fig. H) horse-shoe-shaped, anterior margin with a prolongation medially.

The genus is represented by two species from India including a new species. The two species can be separated on the basis of the following key characters:

Key to Indian species of *Stollia* ELLENRIEDER

1. Pronotum (fig. A) with humeral angles obtuse, anterolateral margins smooth and straight; antennae (fig. B) with second and third segments subequal in length; membrane of hemelytra reaching beyond apex of abdomen *S. guttiger* (THUNBERG)
- pronotum (fig. I) with humeral angles much acute, anterolateral margins serrated and sinuate; antennae (fig. J) with second segment distinctly shorter than third; membrane of hemelytra reaching apex of abdomen. *S. spinosa* sp. n.



Figs. A-H. *Stollia guttiger* (THUNBERG), ♀, ♂; A. Entire body in dorsal view, ♀; B. Antenna, ♀; C. External genitalia, ♀; D. Last tergum, ♀; E. Spermatheca, ♀; F. Clasper, ♂; G. Pseudoclasper, ♂; H. Subgenital plate, ♂.

Figs. I-J. *Stollia spinosa* sp. n., ♀; I. Head and Thorax in dorsal view, ♀; J. Antenna, ♀.

Stollia guttiger (THUNBERG)
(figs. A-H)

Cimex guttiger THUNBERG, 1783: 32.

Stollia guttiger (THUNBERG); Stal, 1876: 81.

Bainbriggeanus fletcheri DISTANT, 1918: 135 (LESTON, 1956: 702).

Material examined: -5 ♀, 6 ♂, India: Uttar pradesh, Aligarh, University Botanical garden, on *Croton sp.*, 5.VII.1978 (M. NAYYAR AZIM); 5 ♀, 7 ♂, Tamil Nadu, Madras, Myalapore, on grass, 15.XI.1979 (M. NAYYAR AZIM).

Stollia spinosa sp. n.

Female (figs. I-J).

Head dark, densely and darkly punctate, distinctly wider than long (2.4 : 1.8 mm); juga as long as tylus, truncated apically, lateral margins sinuate before eyes; eyes reddish brown; ocelli red, space between ocellus and inner orbital margin about one-fifth the inter-ocellar space. Rostrum brownish except apical segment dark, extending just beyond hind coxae, segments I, II, III and IV, 0.79, 1.27, 0.4 and 0.57 mm in length respectively. Antennae yellowish brown except apical segment dark, segments I, II, III, IV and V, 0.42, 0.74, 0.82, 0.9 and 1.18 mm in length respectively.

Thorax dark brown, densely and darkly punctate except two triangular patches on anterior area of pronotum and one on each basal angle of scutellum laevigate; pronotum with anterior margin deeply concave, antero-lateral margins sinuate and serrated, humeral angles produced laterally into acute spines; maximum width of pronotum about three times as wide as long (6.9 : 2.2 mm); scutellum gradually narrowing apically, as wide as long (3.7 : 3.7 mm); membrane of hemelytra reaching apex of abdomen. Legs yellowish except two dark patches near apex of femora.

Abdomen dark except connexivum with alternating dark and yellow bands, densely punctate. Since the female genitalic characters have generic significance, there is no remarkable difference in the genitalia between the females of *S. guttiger* and *S. spinosa*.

Body length: 8 mm.

Holotype. 1 ♀, India: Uttar pradesh, Agra, on grass, 30.XI.1983 (M. NAYYAR AZIM).

ACKNOWLEDGEMENTS

The authors are deeply indebted to Prof. NAWAB H. KHAN, Chairman, Department of Zoology, Aligarh Muslim University, Aligarh, for providing research facilities. One of us (M. N. AZIM) is thankful to U. G. C., New Delhi for providing financial help.

LITERATURE

DISTANT, W. L. 1918. *The fauna of British India including Ceylon and Burma*. Rhynchota Vol. 7 (London, Taylor & Francis).

ELLENRIEDER. 1862. *Natuurkundig Tijdschrift voor Nederlandsch Indie*. Batavia.

LESTON, D. 1956. *Pentatomoidea (Hemiptera) New species and synonymy*. Ann. Mag. Nat. Hist. 12: 698-704.

STAL, C. 1876. *Enumeratio Hemipterorum 5. Kongl. Svenska Vetensk. Akad. Hand. 14*: 1-162.

THUNBERG, C. P. 1783. *Dissertatio Entomologica Novas Insectorum species*. 2 Upsaliae.

(received April 17, 1984)

