

# First record of the red gum lerp psyllid *Glycaspis brimblecombei* (Hemiptera : Psylloidea) from Peru

Autor(en): **Burckhardt, Daniel / Lozada, Pedro W. / Diaz B., Walter**

Objektyp: **Article**

Zeitschrift: **Mitteilungen der Schweizerischen Entomologischen Gesellschaft =  
Bulletin de la Société Entomologique Suisse = Journal of the  
Swiss Entomological Society**

Band (Jahr): **81 (2008)**

Heft 1-2

PDF erstellt am: **22.07.2024**

Persistenter Link: <https://doi.org/10.5169/seals-402960>

## **Nutzungsbedingungen**

Die ETH-Bibliothek ist Anbieterin der digitalisierten Zeitschriften. Sie besitzt keine Urheberrechte an den Inhalten der Zeitschriften. Die Rechte liegen in der Regel bei den Herausgebern.

Die auf der Plattform e-periodica veröffentlichten Dokumente stehen für nicht-kommerzielle Zwecke in Lehre und Forschung sowie für die private Nutzung frei zur Verfügung. Einzelne Dateien oder Ausdrucke aus diesem Angebot können zusammen mit diesen Nutzungsbedingungen und den korrekten Herkunftsbezeichnungen weitergegeben werden.

Das Veröffentlichen von Bildern in Print- und Online-Publikationen ist nur mit vorheriger Genehmigung der Rechteinhaber erlaubt. Die systematische Speicherung von Teilen des elektronischen Angebots auf anderen Servern bedarf ebenfalls des schriftlichen Einverständnisses der Rechteinhaber.

## **Haftungsausschluss**

Alle Angaben erfolgen ohne Gewähr für Vollständigkeit oder Richtigkeit. Es wird keine Haftung übernommen für Schäden durch die Verwendung von Informationen aus diesem Online-Angebot oder durch das Fehlen von Informationen. Dies gilt auch für Inhalte Dritter, die über dieses Angebot zugänglich sind.

## First record of the red gum lerp psyllid *Glycaspis brimblecombei* (Hemiptera: Psylloidea) from Peru

DANIEL BURCKHARDT<sup>1</sup>, PEDRO W. LOZADA<sup>2,3,4</sup> & WALTER DIAZ B.<sup>3</sup>

<sup>1</sup> Naturhistorisches Museum, Augustinergasse 2, CH-4001 Basel, Switzerland. E-Mail: daniel.burckhardt@unibas.ch

<sup>2</sup> Departamento de Entomología, Museo de Historia Natural, UNMSM, Apartado 14-0434, Lima 14, Peru

<sup>3</sup> Laboratorio de Entomología, Centro de Diagnóstico de Sanidad Vegetal, SENASA, Av. La Molina 1915, Lima 12, Peru

<sup>4</sup> E-Mail: plozada@senasa.gob.pe, plozada21@gmail.com

The Australian psyllid *Glycaspis brimblecombei* Moore is reported for the first time from Peru. An overview of its distribution, a diagnosis and illustrations are provided.

Keywords: Psylloidea, *Glycaspis brimblecombei*, *Eucalyptus*, forestry pest, Peru.

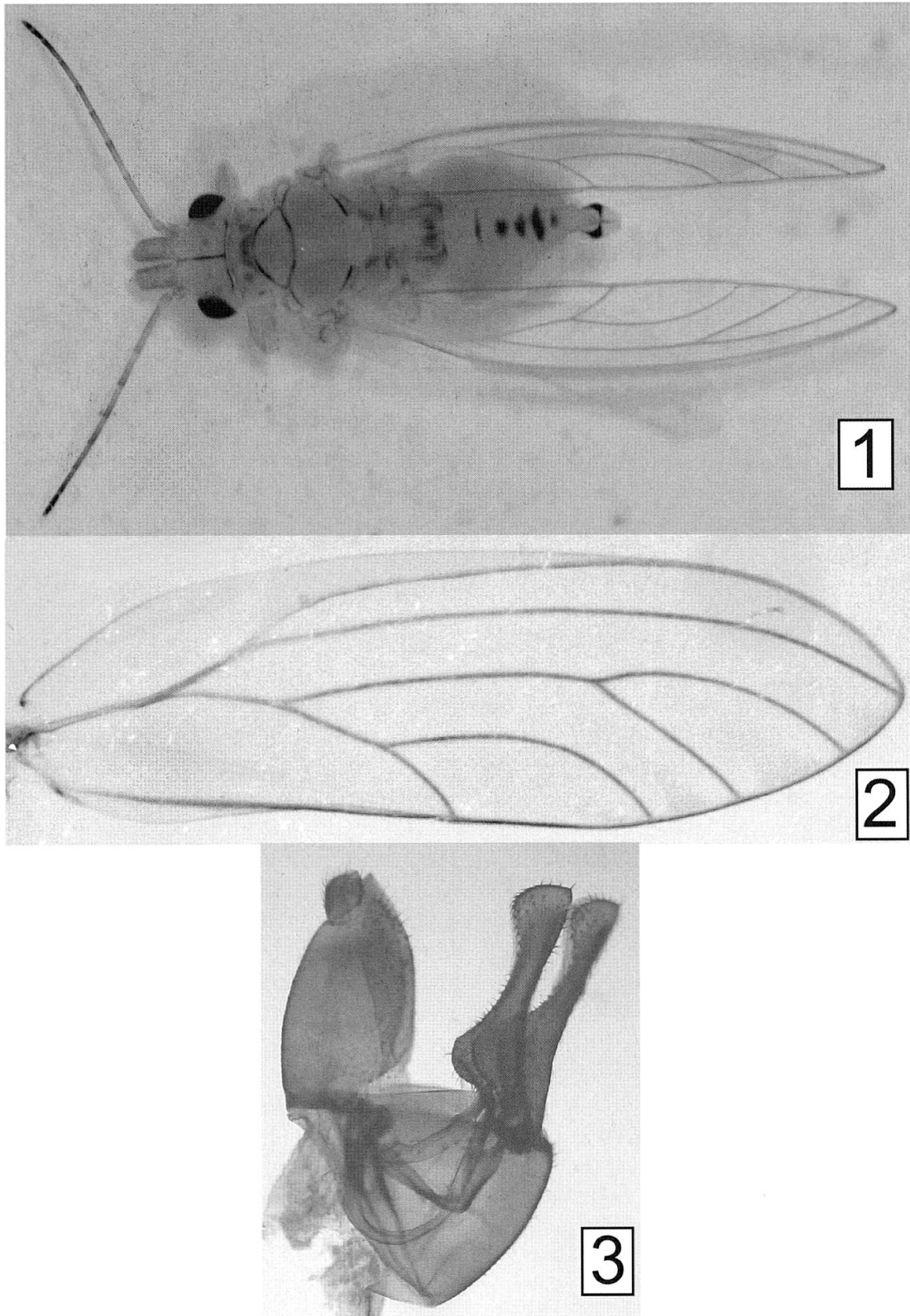
### INTRODUCTION

*Glycaspis* is an Australian genus of jumping plant-lice with 137 described species which are associated with *Eucalyptus* spp. (Hollis 2004). One of the species, *Glycaspis brimblecombei* Moore, originating from Queensland, New South Wales, Northern Territory and South Australia, was detected in eucalypt plantations in the USA, California in 1998 (Brennan *et al.* 1999) and Florida in 2001 (Halbert *et al.* 2001), in 2001 in Mexico (Montes & Raga 2005), in 2002 in Chile (Sandoval & Rothmann 2002, Olivares *et al.* 2004), in 2003 in Brazil (state of São Paulo) (Montes & Raga 2005, Lutinski *et al.* 2006, Santana & Burckhardt 2007), in 2004 in Argentina (Entre Ríos) (Bouvet *et al.* 2005) and in 2006 in Ecuador (Onore & Gara 2007). Apart from the New World *G. brimblecombei* has been also introduced into Hawaii (Nagamine & Heu 2001), Mauritius (Sookar *et al.* 2003) and Madagascar (Hollis 2004).

The red gum lerp psyllid is a serious pest on *Eucalyptus* spp. in the New World but also in Australia (Wilken *et al.* 2003) causing severe defoliation and some tree mortality. Here we report for the first time the occurrence of *Glycaspis brimblecombei* in Peru. The pest was collected on eucalypts on the South Coast of Peru in the department of Tacna, close to the border of Chile.

### MATERIAL EXAMINED

Adults, larvae and lerps were collected in Peru, Tacna, district Tacna, in the centre of the small town Magollo, on *Eucalyptus* sp., on 28 February 2008 by J. Flores G. Some voucher specimens are deposited in the collection of the Naturhistorisches Museum Basel, Switzerland.



Figs 1–3. *Glycaspis brimblecombei* Moore. — 1 Adult, dorsal view; 2 forewing; 3, male terminalia, lateral view.

BRIEF DESCRIPTION OF *GLYCASPIS BRIMBLECOMBEI*

Adults of the genus *Glycaspis* are easily recognisable by their elongate body, the forward directed, very long genal processes and the dorsally flat thorax (Fig. 1). The forewing (Fig. 2) is elongate with subparallel margins, and angular apically. The male proctiger is two-segmented, with short apical segment (Fig. 3). *Glycaspis* species are diagnosable mostly by the paramere shape. In *G. brimblecombei* the paramere is angled in the basal third and subacute apically (Fig. 3). Detailed descriptions of *G. brimblecombei* have been published by Moore (1964), Halbert *et al.* (2001) and Olivares *et al.* (2004).

## REFERENCES

- Bouvet, J.P.R., Harrant, L. & Burckhardt, D. 2005. Primera cita de *Blastopsylla occidentalis* y *Glycaspis brimblecombei* (Hemiptera: Psyllidae) para la República Argentina. — Revista de la Sociedad Entomológica Argentina 64: 99–102.
- Brennan, E.B., Gill, R.J., Hrusa, G.F., & Weinbaum, S.A. 1999. First record of *Glycaspis brimblecombei* (Moore) (Homoptera: Psyllidae) in North America: Initial observations and predator associations of a potentially serious new pest of *Eucalyptus* in California. — Pan-Pacific Entomologist 75: 55–57.
- Halbert, S.E., Gill, R.J. & Nisson, J.N. 2001. Two *Eucalyptus* psyllids new to Florida (Homoptera: Psyllidae). — Florida Department of Agriculture Entomology Circular 407: 2 pp.
- Hollis, D. 2004. Australian Psylloidea: Jumping plantlice and lerp insects. — Australia Biological Resources Study, 216 pp.
- Lutinski, J.A., Lutinski, C.J. & Mello Garcia, F.R. 2006. Primeiro registro de *Glycaspis brimblecombei* Moore, 1964 (Hemiptera: Psyllidae) em eucalipto no Estado de Santa Catarina, Brasil. — Ciencia Rural, Santa Maria 36: 653–655.
- Montes, S.M.N.M. & Raga, A. 2005. Dinâmica estacional deo psilídeo-de-concha *Glycaspis brimblecombei* Moore (Hemiptera: Psyllidae) na região oeste do Estado de São Paulo. — Arquivos do Instituto Biológico 72: 511–515.
- Moore, K.M. 1964. Observations on some Australian forest insects. 18. Four new species of *Glycaspis* (Homoptera: Psyllidae) from Queensland. — Proceedings of the Linnean Society of New South Wales 89: 163–166.
- Nagamine, W.T. & Heu, R.A. 2001. Red gum lerp psyllid *Glycaspis brimblecombei* Moore (Homoptera: Psyllidae). — New Pest Advisory 01–02, 2 pp.  
[http://hawaii.gov/hdoa/pi/ppc/npa-1/npa01-02\\_rpsyllid.pdf](http://hawaii.gov/hdoa/pi/ppc/npa-1/npa01-02_rpsyllid.pdf).
- Olivares, T.S., Burckhardt, D.H. & Cerda, L.A. 2004. *Glycaspis brimblecombei* Moore, «Psyllido de los eucaliptos rojos» (Hemiptera: Psyllidae: Spondyliaspidae): caracteres taxonómicos. — Revista Chilena de Entomología 30: 5–10.
- Onore, G. & Gara, R.L. 2007. First record of *Glycaspis brimblecombei* (Hemiptera: Psyllidae) in Ecuador, biological notes and associated fauna. — 4th European Hemiptera Congress Ivrea (Turin, Italy), 10th–14th September 2007, Extended Abstracts: 41–42.
- Santana, D.L.Q. & Burckhardt, D. 2007. Introduced *Eucalyptus* psyllids in Brazil. — Journal of Forestry Research 12: 337–344.
- Sandoval, A. & Rothmann, S. 2002. Detección del psílido de los eucaliptos rojos, *Glycaspis brimblecombei* Moore, 1964, en Chile (Hemiptera: Psyllidae). — Resumen XXIV Congreso Nacional de Entomología, 12–14 Noviembre, Santiago, Chile: 2.
- Sookar, P., Seewooruthun, S.I. & Ramkhalawon, D. 2003. The redgum lerp psyllid, *Glycaspis brimblecombei*, a new pest of *Eucalyptus* sp in Mauritius. — AMAS, Food and Agricultural Research Council, Réduit, Mauritius: 327–332.
- Wilken, C.F., do Coutu, E.B., Orlato, C., Ferreira Filho, P.J. & Firmino, D.C. 2003. Ocorrência do psilídeo-de-concha (*Glycaspis brimblecombei*) (Hemiptera: Psyllidae) em florestas de eucalipto no Brasil. — Circular Técnica IPEF 201: 1–11.

(received May 20, 2008; accepted May 27, 2008)

