

Zeitschrift: Schweizerische mineralogische und petrographische Mitteilungen = Bulletin suisse de minéralogie et pétrographie

Band: 84 (2004)

Heft: 1-2: Geodynamics and Ore Deposit Evolution of the Alpine-Carpathian-Balkan-Dinaride Orogenic System

Artikel: Late Cretaceous Cu-Au epithermal deposits of the Panagyurishte district, Srednogie zone, Bulgaria

Autor: Moritz, Robert / Kouzmanov, Kalin / Petrunov, Rumen

DOI: <https://doi.org/10.5169/seals-63740>

Nutzungsbedingungen

Die ETH-Bibliothek ist die Anbieterin der digitalisierten Zeitschriften auf E-Periodica. Sie besitzt keine Urheberrechte an den Zeitschriften und ist nicht verantwortlich für deren Inhalte. Die Rechte liegen in der Regel bei den Herausgebern beziehungsweise den externen Rechteinhabern. Das Veröffentlichen von Bildern in Print- und Online-Publikationen sowie auf Social Media-Kanälen oder Webseiten ist nur mit vorheriger Genehmigung der Rechteinhaber erlaubt. [Mehr erfahren](#)

Conditions d'utilisation

L'ETH Library est le fournisseur des revues numérisées. Elle ne détient aucun droit d'auteur sur les revues et n'est pas responsable de leur contenu. En règle générale, les droits sont détenus par les éditeurs ou les détenteurs de droits externes. La reproduction d'images dans des publications imprimées ou en ligne ainsi que sur des canaux de médias sociaux ou des sites web n'est autorisée qu'avec l'accord préalable des détenteurs des droits. [En savoir plus](#)

Terms of use

The ETH Library is the provider of the digitised journals. It does not own any copyrights to the journals and is not responsible for their content. The rights usually lie with the publishers or the external rights holders. Publishing images in print and online publications, as well as on social media channels or websites, is only permitted with the prior consent of the rights holders. [Find out more](#)

Download PDF: 13.07.2025

ETH-Bibliothek Zürich, E-Periodica, <https://www.e-periodica.ch>

Late Cretaceous Cu–Au epithermal deposits of the Panagyurishte district, Srednogie zone, Bulgaria

Robert Moritz¹, Kalin Kouzmanov^{2,1} and Rumen Petrunov³

Abstract

This review compiles geological, mineralogical, and isotopic data from the four largest Cu–Au epithermal deposits of the Late Cretaceous Panagyurishte mineral district, Bulgaria, including from north to south: the producing Chelopech, and the past-producing Krassen, Radka and Elshitsa deposits. Epithermal Cu–Au deposits of the northern and older part of this district are mainly hosted by andesites, whereas those from the southern and younger district are hosted by dacites. Advanced argillic alteration is described in the majority of the deposits, with the most complex alteration assemblage occurring at Chelopech. In all deposits, mineralization is the result of replacement and open-space deposition producing massive sulphide lenses surrounded by disseminated mineralization. Additionally at Chelopech, stockwork vein zones are also an important ore type. At Elshitsa, Radka and Krassen, the mineralized zones are controlled by WNW-oriented faults, and at Chelopech there is a supplementary control by NE-oriented faults. A three-stage paragenesis is recognized in all deposits, including an early disseminated to massive pyrite stage; an intermediate, Au-bearing Cu–As–S stage, which forms the economic ore; and a late Zn–Pb–Ba stage. Sulphur isotopic compositions of sulphide and gangue minerals are consistent with similar data sets from other high-sulphidation deposits. Variations in Sr and Pb isotope data among the deposits are interpreted in terms of fluid interaction with different host-rocks, additionally variability in Pb isotopic compositions can be attributed to differences in composition of the associated magmatism. Throughout the Panagyurishte district, there is a coherent and continuous sequence of events displayed by the epithermal Cu–Au deposits indicating that they result from similar ore forming processes. However, latitudinal differences in ore deposit characteristics are likely related to emplacements at different depths, differences in degrees of preservation as a function of post-ore tectonics and/or sedimentary processes, efficiency of ore formation, and/or modifications of regional controls during the 14 Ma-long geological evolution of the Panagyurishte district, such as magma petrogenesis and/or tectonic regimes.

Keywords: Cu–Au high-sulphidation epithermal deposits, Panagyurishte district, Srednogie zone, Bulgaria.

Introduction

The Panagyurishte district is a major metallogenic region in Eastern Europe (Fig. 1a), which has supplied about 95% of the recent Bulgarian copper and gold production (Mutafchiev and Petrunov, 1996), and where Late Cretaceous porphyry-Cu and Cu–Au epithermal deposits form the most significant deposits. Within the Tethyan region, the Panagyurishte mineral district displays some of the best examples of the porphyry-Cu and high-sulphidation epithermal ore deposit association recognized in other tectonic settings such as the circum-Pacific region (Sillitoe, 1991, 1999; Hedenquist and Lowenstern, 1994; Corbett and Leach, 1998). The Panagyurishte district is located 60–90 km east of Sofia, between the towns of

Etropole and Pazardzhik (Fig. 1c), and belongs to the Late Cretaceous Banat-Timok-Srednogie belt extending from Romania through Serbia to Bulgaria (Fig. 1a), a major ore province within the Alpine-Balkan-Carpathian-Dinaride collision belt (Berza et al., 1998; Ciobanu et al., 2002; Heinrich and Neubauer, 2002). While the genesis of porphyry-Cu deposits has been relatively undisputed in the Panagyurishte district (e.g. Strashimirov et al., 2002; von Quadt et al., 2002; Tarkian et al., 2003), the Cu–Au epithermal deposits have remained subject to debate for some time, since they were interpreted as volcanogenic massive sulphide (VMS) deposits in early studies (Bogdanov, 1984), and their high-sulphidation nature has only been recognized in recent years (Petrunov, 1994, 1995; Mutafchiev and Petrunov, 1996).

¹ Section des Sciences de la Terre, Université de Genève, rue des Maraîchers 13, CH-1205 Genève, Switzerland. <robert.moritz@terre.unige.ch>

² Institut für Isotopengeologie und Mineralische Rohstoffe, ETH-Zentrum, CH-8092 Zürich, Switzerland. Present address: (1). <kalin.kouzmanov@terre.unige.ch>

³ Geological Institute, Bulgarian Academy of Sciences, Acad. G. Bonchev Street, Bl. 24, 1113 Sofia, Bulgaria. <petrunov@geology.bas.bg>

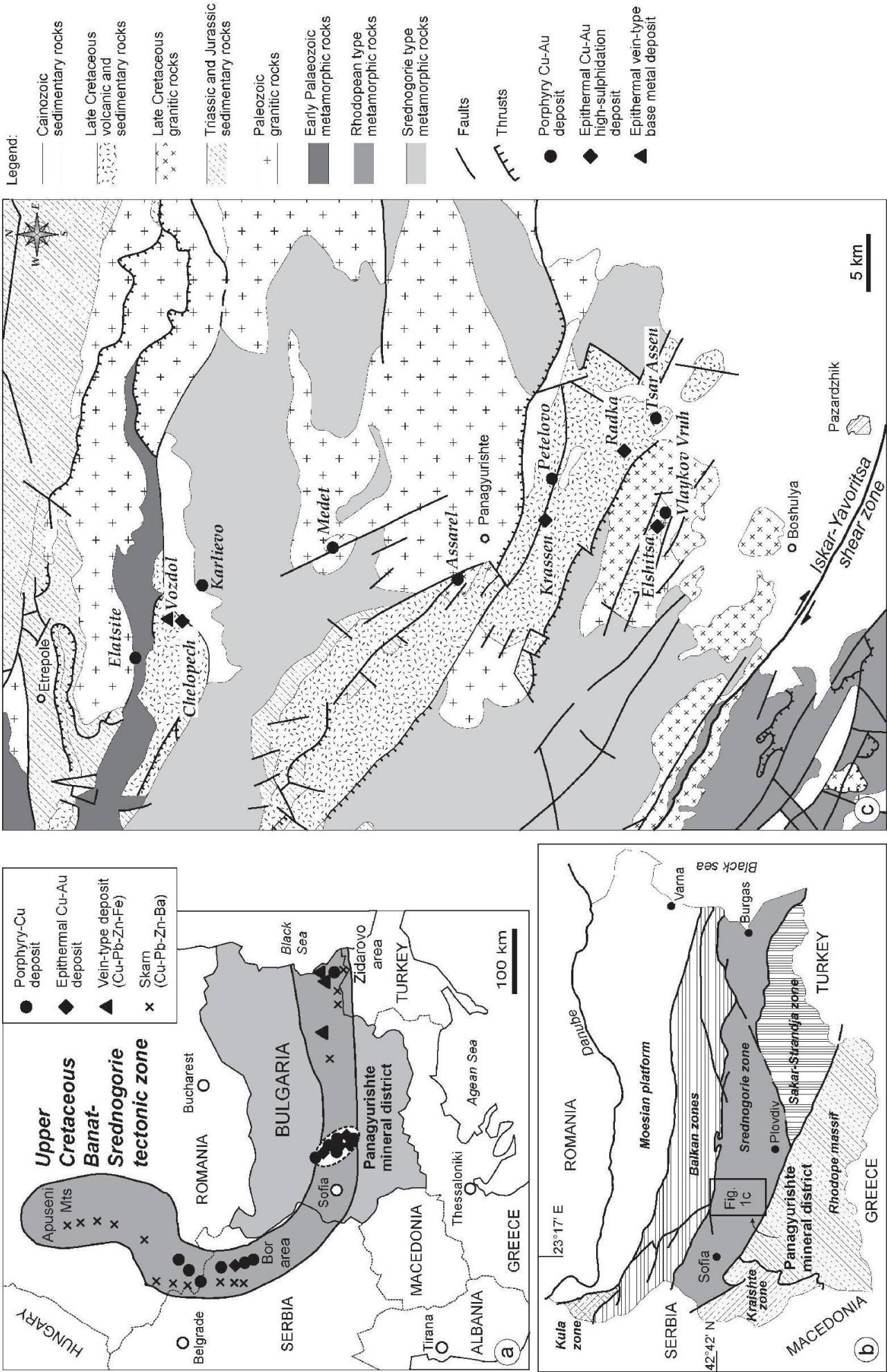


Fig. 1 (a) Location of the Late Cretaceous Banat-Srednogorie Belt in Eastern Europe (after Berza et al., 1998; Ciobanu et al., 2002; Heinrich and Neubauer, 2002). (b) Major tectonic zones of Bulgaria (after Ivanov, 1998). (c) Simplified geology of the Panagyurishte ore district (after Cheshitev et al., 1995).

This review compiles geological, mineralogical, and isotopic information from the four largest Cu–Au epithermal deposits of the Panagyurishte district (Table 1), including Chelopech, Krassen, Radka and Elshitsa (Fig. 1c). It shows that these deposits were formed by similar processes, typical for high-sulphidation epithermal deposits, during the evolution of the Srednogorie belt. However, latitudinal variations of the ore deposit characteristics are recognized, and their significance is discussed as a function of emplacements at different depths, differences in the degree of preservation, efficiency of ore formation processes at the local scale, and fundamental changes in regional geological controls in space and with time.

Regional geological setting

The Srednogorie tectonic zone is an 80 to 100 km wide and east–west oriented zone in Bulgaria, located between the Balkan Zone in the north, and the Rhodopes and the Sakar-Strandja Zone in the south (Fig. 1b; Boncev, 1988; Ivanov, 1988, 1998). The Panagyurishte ore district belongs to the Central Srednogorie zone, and is characterised by a north-northwest oriented alignment of porphyry-Cu and Cu–Au epithermal ore deposits, which is oblique with respect to the east-west trending Srednogorie tectonic zone in Bulgaria (Fig. 1b).

The geology of the Panagyurishte mineral district consists of metamorphic and igneous basement rocks, abundant Late Cretaceous magmatic rocks and subsidiary sedimentary rocks, and subordinate Tertiary sedimentary rocks (Fig. 1c; Popov et al., 2003). The oldest basement rocks are two-mica migmatites, amphibolites and gneisses of uncertain Precambrian age, known as Pirdop Group (Dabovski, 1988), Srednogorie type metamorphic rocks (Cheshitev et al., 1995) or pre-Rhodopean Supergroup (Katskov and Iliev, 1993). Younger metamorphic rocks are Late Precambrian to Cambrian phyllites, chlorite schists and diabases of the Berkovitsa Group (Haydoutov, 2001). Palaeozoic basement intrusions are gabbrodiorites, quartz-diorites, tonalites, and granodiorites-granites (Dabovski et al., 1972; Kamenov et al., 2002).

The type and composition of the Late Cretaceous magmatic rocks vary as a function of latitude in the Panagyurishte district, with sub-volcanic and effusive rocks becoming progressively more abundant from south to north with respect to intrusive rocks (Fig. 1c). Andesites predominate in the northern and central Panagyurishte district, whereas dacites are more abundant in its southern part (Boccaletti et al., 1978; Stanisheva-

Vassileva, 1980). Rhyodacites and rhyolites only occur in the central and southern Panagyurishte district (Dimitrov, 1983; Nedialkov and Zartova, 2002). In the south, andesites are the earliest volcanic rocks, followed by dacites, and a final stage of dacitic-rhyodacitic subvolcanic intrusions (Bogdanov et al., 1970; Popov et al., 2000a). Small, subvolcanic dacite, quartz-monzodiorite and granodiorite intrusions (mostly <1 km² in size), with subsidiary aplites and mafic dykes are comagmatic with the Late Cretaceous volcanic rocks. Porphyry-Cu deposits of the Panagyurishte district are typically centred on such intrusions (Strashimirov et al., 2002; von Quadt et al., 2002; Popov et al., 2003; Tarkian et al., 2003). Larger sized, northwest-elongated, syntectonic, Late Cretaceous granodioritic-granitic intrusions are restricted to the southernmost Panagyurishte district along the Iskar-Yavoritsa Shear Zone (Ivanov et al., 2001; Peytcheva et al., 2001), which corresponds to the transition between the Srednogorie zone and the Rhodope Massif (Fig. 1b,c). The Late Cretaceous magmatic rocks are calc-alkaline to high-K calc-alkaline with a local transition to subalkaline (Fig. 2), and their trace element data are coherent with destructive continental margin and/or volcanic arc related magmatism (Popov and Popov, 1997; Nedialkov and Zartova, 2002; Stoykov et al., 2002, 2003; Kamenov et al., 2003a,b).

U–Pb zircon geochronology reveals a 14 Ma-long protracted Cretaceous magmatic and ore-forming activity in the Panagyurishte district (Fig. 1c). The oldest activity is recorded in its northern part, where the age of the Elatsite porphyry-Cu deposit is bracketed by dykes dated at 92.1 ± 0.3 Ma and 91.84 ± 0.3 Ma (von Quadt et al., 2002), in line with recent Re–Os ages of 92 Ma (Zimmerman et al., 2003). At the Chelopech deposit, andesite pre-dating mineralization and latite yield an age of 91.45 ± 0.15 Ma (Chambefort et al., 2003a; Stoykov et al., 2004). Ages decrease southward with 86.62 ± 0.02 and 86.11 ± 0.23 Ma, respectively, for the Elshitsa granite and subvolcanic dacites, and 85 ± 0.15 Ma for the Vlaykov Vruh porphyry-Cu deposit (Peytcheva et al., 2003), 84.6 ± 0.3 and 82.16 ± 0.1 Ma, respectively, for granodiorite and gabbro at Boshulya (Peytcheva and von Quadt, 2003), and 78.54 ± 0.13 Ma for the Capitan-Dimitriev pluton (Kamenov et al., 2003c).

The Late Cretaceous sedimentary rock succession in the Panagyurishte district starts with Cenomanian-Turonian conglomerate and sandstone, which transgressively overly the basement rocks, contain metamorphic rock fragments and coal-bearing interbeds, and are devoid of volcanic

rock fragments. They are postdated by Late Cretaceous intrusive and volcanic rocks, which are interbedded with early Senonian argillaceous limestone, calcarenite and sandstone with abundant volcanic rock fragments. This interbedded rock assemblage is transgressively overlain by Santonian-Campanian red marl of the Mirkovo Formation, and Campanian-Maastrichtian calcarenite and mudstone flysch of the Chugovo Formation (Aiello et al., 1977; Moev and Antonov, 1978; Popov, 2001a; Stoykov and Pavlishina, 2003).

Three predominant fault orientations are recognized in the Panagyurishte district (Fig. 1c; Cheshitev et al., 1995; Popov, 2001b; Popov et al., 2003): (1) regional WNW-oriented faults, which are partly thrusts with both northward and southward vergences, and which control the geometry of the distribution of the Late Cretaceous magmatic and sedimentary rocks; (2) shorter NW to NNW-oriented faults, recognized within the entire district, including in the ore centres, and which are parallel to the characteristic ore deposits alignment of the Panagyurishte district; and (3) subordinate NE-oriented faults, also recognized in some deposits (Popov, 2001b; Jelev et al., 2003). According to Dobrev et al. (1967) and Tsvetkov (1976), gravity and magnetic data reveal a regional, deep-seated NNW-oriented fault-zone that coincides with the ore deposit alignment of the district.

Regional tectonic evolution

The Alpine evolution of the Bulgarian tectonic zones is intimately linked to the tectonic evolution and closure of the Tethys (Dabovski et al., 1991; Ricou et al., 1998). Ivanov (1988) interprets the Srednogorie tectonic zone as an island arc that was formed during northward Late Cretaceous subduction of the African Plate beneath the Eurasian Plate. Boccaletti et al. (1974), Berza et al. (1998) and Neubauer (2002) suggest post-collisional detachment of the subducted slab as the trigger for the Late Cretaceous calc-alkaline magmatism and associated ore deposit formation in the Srednogorie zone. In contrast, based on the observation that subduction ceased in the early Cretaceous (Barremian), Popov (1987, 2002) has interpreted the Banat-Timok-Srednogorie zone as a rift. This appears to be in apparent conflict with the subduction-related scenario, but the arguments raised by Popov (1987) could be reconciled with the scenario of Boccaletti et al. (1974), Berza et al. (1998) and Neubauer (2002), if one considers the time lag between cessation of subduction and post-collisional slab break-off. More

recently, based on regional lithogeochemical and radiometric age data from magmatic rocks, Kamenov et al. (2003a,b) and von Quadt et al. (2003a,b) propose a roll-back scenario to explain the geodynamic setting of the Panagyurishte district. However, both slab detachment and roll-back scenarios are disputed by Lips (2002), who argues that conditions for such geodynamic settings were unfavourable in the Late Cretaceous due to the relatively low density and limited length of the young subducted slab, and he favours typical subduction-related calc-alkaline magmatism and associated ore formation processes. A consensus might be difficult to reach, because, as admitted by Neubauer (2002), distinction between subduction-related and slab break-off magmatism remains ambiguous. During the Early to Middle Eocene, continuous tectonic plate convergence resulted in the collision of the Rhodopes with the Srednogorie zone, whereby allochthonous units of the former were thrust northward on the southern Srednogorie zone (Ivanov, 1988; Ricou et al., 1998).

Evolution of genetic concepts for the Panagyurishte Cu–Au epithermal ore deposits

Early contributions (see Dimitrov, 1960, and references therein) have interpreted the Cu–Au hydrothermal deposits as epithermal to mesothermal deposits genetically linked to porphyry-Cu deposits in the Panagyurishte district. Dimitrov (1960) describes the ore deposits as epigenetic, formed by replacement and open space deposition processes, with a preferential development of alteration zones and ore bodies in volcanic tuffs and sedimentary rocks.

Later, based on the observation that massive pyrite fragments from the early ore paragenesis were set in a matrix of dacitic tuffs in some deposits of the Panagyurishte district, Bogdanov (1984) interpreted the early massive pyrite stage of the Cu–Au hydrothermal deposits as synchronous with volcanic activity and sedimentation in water basins, followed by epigenetic polymetallic ore. Bogdanov (1984) concluded that porphyry-Cu deposits post-dated Cu–Au hydrothermal ores based on K–Ar ages of 90–94 Ma for the volcanic rocks and 75–87 Ma for the intrusions hosting the porphyry-Cu deposits (Chipchakova and Lilov, 1976).

More recently, Petrunov (1995), and Mutaftchiev and Petrunov (1996) recognized that the Cu–Au Chelopech deposit of the northern Panagyurishte district (Fig. 1c) shares alteration and opaque mineral associations with typical high-sulphidation epithermal deposits (Hedenquist et al., 2000), also known as acid sulphate or alunite-kaol-

linite deposits (Heald et al., 1987; Berger and Henley, 1989). Petrunov (1995), and Mutafchiev and Petrunov (1996) proposed a succession of events with submarine formation of early massive sulphide ore, followed by uplift of the volcanic edifice and formation of the high-sulphidation ore in an aerial setting, overprinting the volcano-genic massive sulphide ore. Therefore, they classified the Chelopech deposit as a volcanic-hosted epithermal deposit of high-sulphidation type.

Recent contributions (Popov and Kovachev, 1996; Popov and Popov, 1997; Strashimirov et al., 2002), based on modern genetic concepts (e.g. Hedenquist and Lowenstern, 1994; Hedenquist et al., 2000), interpret the Cu–Au hydrothermal deposits as epithermal high-sulphidation systems genetically linked to porphyry-Cu deposits of the Panagyurishte district, therefore in agreement with the early interpretation by Dimitrov (1960).

Spatial association of the Cu–Au epithermal deposits with porphyry-Cu deposits

The Cu–Au hydrothermal deposit at Elshitsa is located about 1 km to the NW to the past-producing Vlaykov Vruh porphyry-Cu deposit (Fig. 1c). These two neighbouring deposits constitute the best example for the tight spatial association of

high-sulphidation epithermal and porphyry-Cu deposits within the Panagyurishte ore district (Kouzmanov, 2001). Such a relationship is not as obvious at the Radka deposit, although granodioritic and quartz-diorite porphyries have been described in its vicinity. Cu–Au epithermal occurrences have also been described in the immediate proximity of the Assarel and Petelovo porphyry-Cu deposits (Petrunov et al., 1991; Sillitoe, 1999; Tsonev et al., 2000a; Fig. 1c). The Chelopech deposit belongs to an ore deposit cluster in the northern Panagyurishte district, which also includes the vein-type Vozdol base metal occurrence, the Karlievo porphyry-Cu occurrence, and the major producing porphyry-Cu Elatsite deposit (Popov et al., 2000b; Fig. 1c). This ore deposit cluster is centred on a major, regional geomagnetic anomaly of the northern Panagyurishte district, interpreted by Popov et al. (2002) as a shallow, large magmatic chamber.

Economic significance and metal ratios of the Cu–Au epithermal deposits

Chelopech is the largest and, at present, the only producing high-sulphidation deposit in the Panagyurishte mineral district (Table 1). It ranks among the major high-sulphidation deposits of

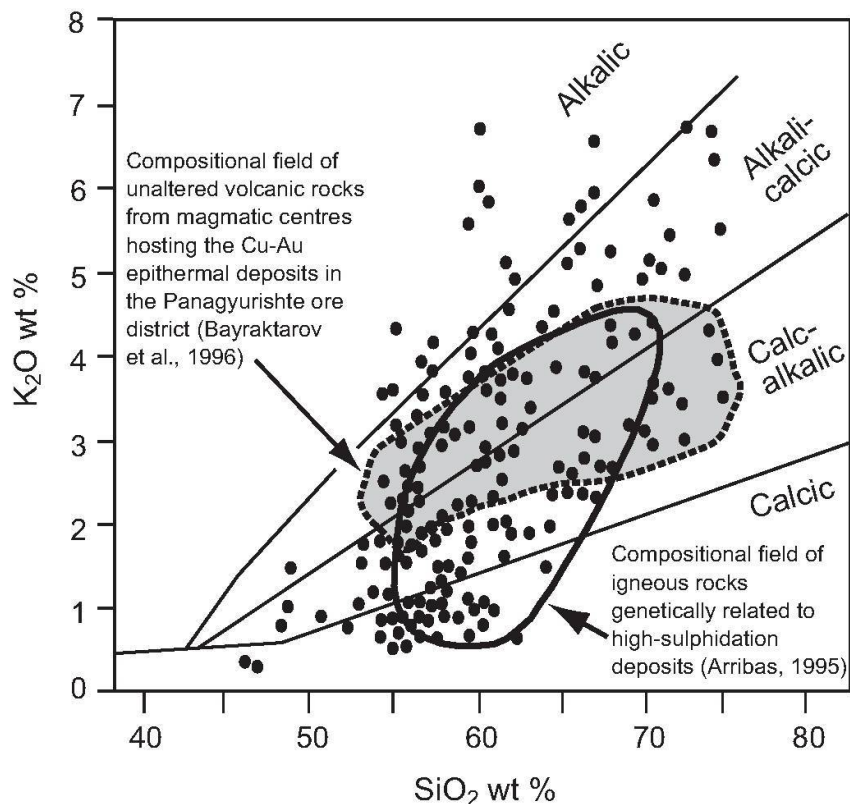


Fig. 2 K₂O vs. SiO₂ diagram for Late Cretaceous igneous rocks from the Panagyurishte ore district (black dots). Data for the Panagyurishte ore district from Bayraktarov et al. (1996), and data compilation of igneous rocks genetically related to high-sulphidation deposits from Arribas (1995).

Table 1 Major characteristics of high-sulphidation deposits from the Panagyurishte ore district.

Ore deposit	Chelopech	Krassen	Radka	Elshitsa
Immediate host rocks	Massive andesites; phreatomagmatic diatreme breccia; sedimentary rocks (oolithic, biodetrital and sandstone layers); volcanic tephra and tuff.	Andesitic breccia tuff, and lava.	Preferentially dacitic breccia (abundant) and dacitic tuff (rare). Subordinate lava flows.	Dacite subvolcanic body, dacitic tuff, volcanic breccia.
Alteration	Proximal to ore bodies: advanced argillic with vuggy silica (innermost part of silicic zone with pyrite and APS minerals*, followed laterally by quartz-kaolinite-dickite-pyrite-APS minerals*). Intermediate: phyllic. Distal: propylitic. At depth: diaspore, pyrophyllite, alunite and zunyite.	Proximal: advanced argillic (quartz-kaolinite/dickite). Intermediate: phyllic. Distal: propylitic (including adularia).	Proximal: phyllic (innermost part with quartz-sericite followed laterally by quartz-sericite-albite). Distal: propylitic.	Proximal to ore bodies: advanced argillic (quartz-sericite +/- diaspore). Intermediate: phyllic. Distal: propylitic.
Orebody geometry & texture	Veins, dissemination, massive sulphide lenses with replacement textures, breccia.	Moderately dipping massive sulphide lenses, disseminations.	Mainly steeply dipping massive sulphide lenses surrounded by disseminations, breccia pipes, rare quartz-sulphide veins.	Mainly steeply dipping massive sulphide lenses, surrounded by disseminations, breccia and rare veins.
Ore & alteration control	Fault and lithological control.	Fault control (& lithological?)	Fault and lithological control.	Fault and lithological control.
Mineralogical differences	Enargite Luzonite Native Ag Tetrahedrite APS minerals* Kaolinite/Dickite Alunite Diaspore Pyrophyllite Vuggy silica Chalcedony	Abundant Abundant None Rare Abundant Abundant At deeper levels At deeper levels At deeper levels Present locally Abundant	Present Minor Minor Present None Present None None None None None None None	Rare, upper levels None Minor Present None None None None None None None None None
Tonnage* (Mt)	42.5	0.3	8.9	4.5
Ore grades	Cu (%) 1.28 Au (g/t) 3.4 Ag (g/t) 8.4 (18)	0.76	1.06 1.5-2.0 25-30	1.13 1.5 15
Metal ratios	Ag/Au 2.5 Au/Cu 2.7 Ag/Cu 7.8		16 1.7 26	10 1.3 13.3
Production period	1954- ... (still in operation)	1962-1973	1942-1995	1922-1999
Source of information (except tonnage and production mainly from Strashimirov et al., 2002)	Petrunov (1989, 1994, 1995); Moritz et al. (2001, 2003); Chambeftort et al. (2002, 2003); Georgieva et al. (2002); Arisanov (pers. comm., 2002).	Radonova (1969, 1970); Radonova and Velinov (1974); Tsonev et al. (2000a).	Radonova (1962); Chipchakova et al. (1981); Tsonev et al. (2000b); Kouzmanov (2001); Kouzmanov et al. (2004).	Radanova (1967, 1970); Chipchakova and Stefanov (1974); Dimitrov (1985); Kouzmanov (2001).

APS minerals*: Aluminium-phosphate-sulphate minerals; Tonnage*: total of past production and remaining resources.

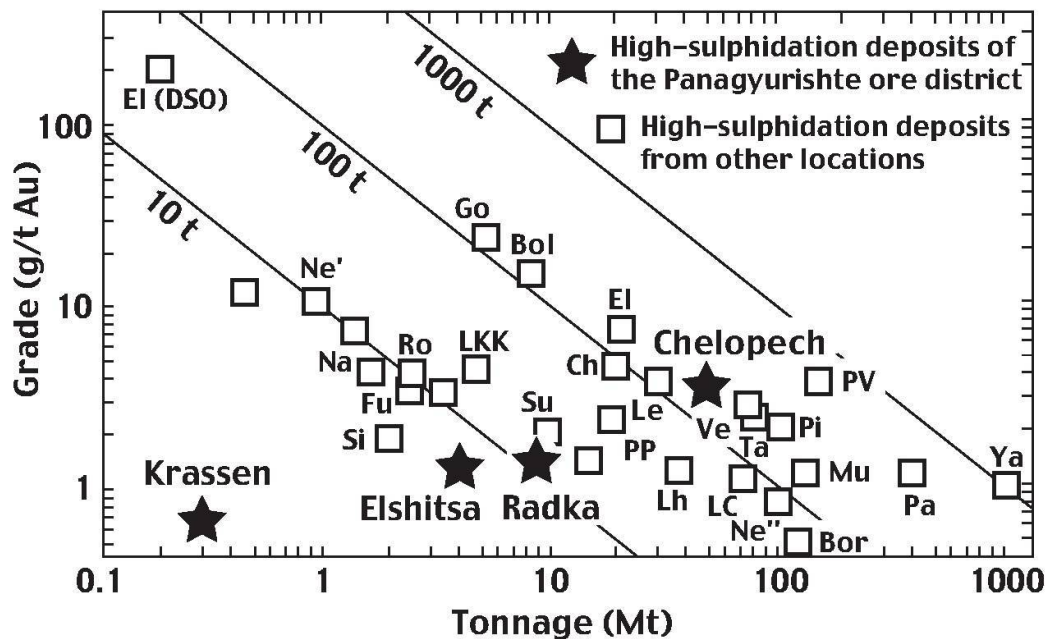


Fig. 3 Grade–tonnage diagram of high-sulphidation deposits from the Panagyurishte ore district in comparison to similar deposits from other localities. Grades and tonnages of the Bulgarian deposits are from Strashimirov et al. (2002). The diagram is modified from Hedenquist et al. (2000) with additional data from Sillitoe (1999) marked with an asterisk (*) in the following list. Bol — Boliden, Sweden; Bor — Bor*, Serbia; Chinkuashih, Taiwan; El — El Indio, Chile; El (DSO) — El Indio direct shipping ore; Fu — Furtei*, Italy; Go — Goldfield, U.S.A.; LC — La Coipa*, Chile; Le — Lepanto, Philippines; Lh — Lahoca, Hungary; LKK — Lerokis and Kali Kuning*, Indonesia; Mu — Mulatos, Mexico; Na — Nansatsu district (including Kasuga), Japan; Ne' and Ne'' — Nevados de Famatina*, Argentina (high and low grade ore, respectively); Pa — Pascua, Chile; Pi — Pierina, Peru; PP — Paradise Peak, U.S.A.; PV — Pueblo Viejo, Dominican Republic; Ro — Rodalquilar, Spain; Si — Sipan*, Peru; Su — Summitville, U.S.A.; Ta — Tambo, Chile; Ve — Veladero, Argentina; Ya — Yanacocha, Peru.

the world, with a tonnage and a gold grade comparable to important deposits of the circum-Pacific region such as El Indio in Chile, Lepanto in the Philippines and Pierina in Peru (Fig. 3). By contrast, the past-producing Elshitsa and Radka deposits are on the borderline of economic deposits, and Krassen remains an uneconomic occurrence (Fig. 3).

The northern zone stands out as the more fertile part of the Panagyurishte ore district. Indeed, the location of the major high-sulphidation Chelopech deposit coincides with the geographic position of the economically significant porphyry-Cu deposits of the area (Fig. 1c), including Elatsite (354 Mt at 0.44% Cu and 0.2 g/t Au), Medet (163 Mt at 0.32% Cu and 80 g/t Mo), and Assarel (319 Mt at 0.36% Cu), whereas the southern porphyry-Cu deposits at Tsar Assen (6.6 Mt at 0.47% Cu) and Vlaykov Vruh (9.8 Mt at 0.46% Cu) are much smaller (Porphyry-Cu data from Strashimirov et al., 2002, total of past production and remaining resources), and correlate spatially with the lesser economic Elshitsa, Radka and Krassen epithermal deposits.

Chelopech is characterised by higher Cu and Au grades (1.28% and 3.4 g/t) relative to Krassen (0.76% and 0.69 g/t), Radka (1.06% and 1.5–2.0

g/t) and Elshitsa (1.13% and 1.5 g/t). Silver grades are on average lower at Chelopech (8.4 g/t) than at Radka (25–30 g/t) and Elshitsa (15 g/t), which is reflected by a low Ag/Au ratio of 2.5 at Chelopech in contrast to 16 and 10, respectively, at Radka and Elshitsa. The Chelopech deposit has a higher Au/Cu ratio of 2.7 than the Radka and Elshitsa deposits, respectively, with 1.7 and 1.3 (Table 1). Additionally, Chelopech is characterised by elevated contents of S, Ga and Ge that have been by-products during ore dressing (Popov and Kovachev, 1996).

Host rocks of the Cu–Au epithermal deposits in the Panagyurishte ore district

At Elshitsa, the ore bodies are hosted by an about 100 m wide breccia zone within a WNW-elongated and steeply dipping Late Cretaceous subvolcanic dacite body (Fig. 4c). This subvolcanic rhyodacite body crosscuts a belt of andesitic-dacitic volcanic rocks located between Palaeozoic granitoids to the south and the Late Cretaceous Elshitsa intrusion to the north (Fig. 1c). Dacitic volcanic rocks and breccia form the preferential rock environment for metasomatic replacement and hy-

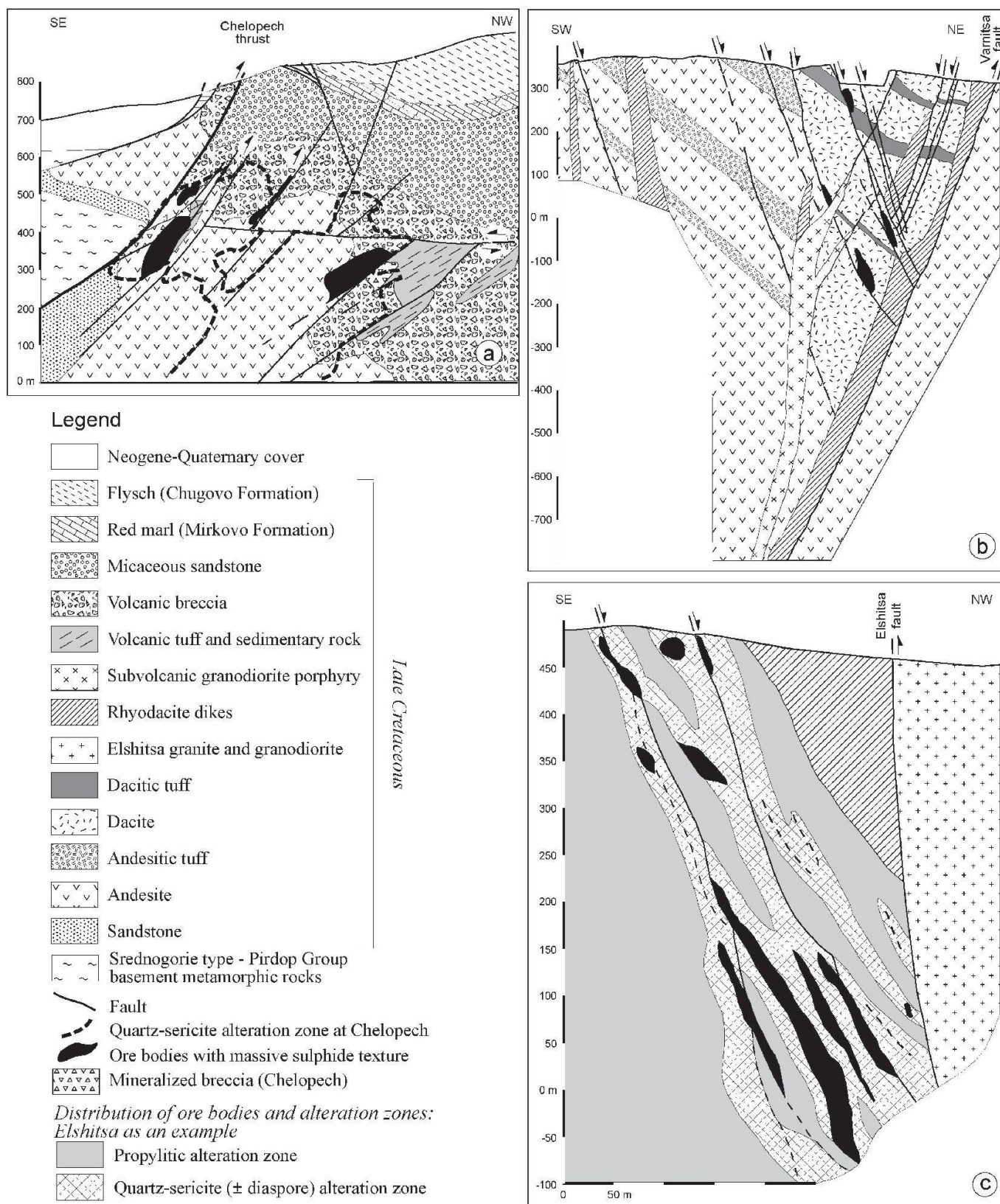


Fig. 4 (a) Cross sections of the Chelopech (after Chambefort, 2005), (b) Radka (after Popov and Popov, 1997; Tsonev et al., 2000b; Kouzmanov et al., 2002) and (c) Elshitsa deposits (after Chipchakova and Stefanov, 1974).

drothermal precipitation (Fig. 4c; Kouzmanov, 2001).

The Radka deposit occurs in an andesitic-dacitic volcanic belt, with subordinate rhyodacitic dykes and granodioritic and quartz dioritic por-

phyries (Fig. 4b), immediately to the northeast of the Late Cretaceous Elshitsa intrusion (Fig. 1c). The immediate host rocks of the mineralized zones are exclusively Late Cretaceous dacitic lava flows, volcanic breccia and tuffs (Fig. 4b). The lat-

ter two are preferential hosts to the mineralization (Bogdanov and Bogdanova, 1974; Kouzmanov, 2001; Kouzmanov et al., 2004).

In the Krassen deposit (Fig. 1c), the host rocks of the mineralized zones are andesitic breccia, tuffs and lava flows that have been overthrust along the Krassen fault on the sedimentary rocks of the Chugovo Formation (Tsonev et al., 2000a).

The Chelopech deposit is hosted by a Late Cretaceous volcanic and volcano-sedimentary complex, transgressively overlaying Precambrian and Palaeozoic metamorphic rocks (Fig. 1c, Table 1; Popov et al., 2000b). The Late Cretaceous rock sequence consists of detrital sedimentary rocks derived from the basement, and andesitic, dacitic to trachyandesitic subvolcanic bodies, lava flows, agglomerate flows, tuffs and epiclastic rocks. They are transgressively covered by sandstone, argillaceous limestone, and the terrigenous flysch sequence of the Chugovo Formation (Fig. 4). The ore bodies are hosted by (1) an andesitic subvolcanic body, associated with phreatomagmatic, diatreme breccias, and (2) sedimentary rocks with oolitic, biotrital and sandstone layers interbedded with (3) volcanic tephra-tuff containing accretionary lapilli and pumices (Chambefort et al., 2003b; Jacquat, 2003).

Unaltered volcanic rocks from the magmatic centres hosting the Cu–Au epithermal and porphyry-Cu deposits are enriched in K with respect to equivalent rock types in barren areas (Bayraktarov et al., 1996). Figure 2 shows that the K_2O vs. SiO_2 field of the volcanic host rocks of the ore deposits in the Panagyurishte district overlaps with the upper part of the field typical for volcanic rocks genetically related to high-sulphidation deposits (Arribas, 1995).

Wall rock alteration of the Cu–Au epithermal deposits in the Panagyurishte district

Alteration assemblages are variable among the different Cu–Au epithermal deposits of the Panagyurishte ore district (Fig. 5). Chelopech displays laterally and vertically the most complex alteration assemblages among these deposits (Fig. 5a). Laterally outward from the ore bodies, there are four alteration assemblages: (1) a silicic zone with massive silica, sparsely developed vuggy silica, disseminated pyrite and aluminium–phosphate–sulphate (APS) minerals; (2) a quartz–kaolinite–dickite zone with pyrite, APS minerals, and anatase; (3) a widespread quartz–sericite alteration zone; and (4) a propylitic zone. Below the present mining level (405 level, about 400 m below surface), samples from 2 km deep drill cores (from

the surface) reveal that the alteration evolves into a diasporite, pyrophyllite, alunite, zunyite, rutile, and APS mineral assemblage (Petrinov, 1989, 1995; Georgieva et al., 2002).

Radonova (1970), Radonova and Velinov (1974), and Tsonev et al. (2000a) report an advanced argillic assemblage (quartz–kaolinite/dickite) in the immediate wall rocks of the mineralized zones at Krassen, followed laterally by a phyllic and propylitic alteration (Fig. 5b). At Elshitsa and Radka, the wall rock alteration of the mineralization consists predominantly of a phyllic assemblage (quartz–sericite in the immediate host rock of the sulphide bodies followed laterally by quartz–sericite–albite) and grades outwards into a propylitic alteration assemblage (Fig. 5). In addition at Elshitsa, subordinate diasporite and dumortierite have been recognized in the quartz–sericite alteration immediately next to the mineralized zones (Radonova, 1967, 1970), and alunite has been documented at shallow mining levels by Dimitrov (1985), thus revealing the occurrence of advanced argillic alteration in this deposit (Figs. 4 and 5). In contrast to the Chelopech deposit, neither vuggy silica, nor any hypogene kaolinite/dickite and APS minerals have been recorded at Elshitsa and Radka (Table 1, Figs. 5 and 6). Illite is the predominant clay mineral in the two later deposits.

Ore body geometry of the Cu–Au epithermal deposits in the Panagyurishte ore district

In all three deposits of the southern Panagyurishte ore district, i.e. Elshitsa, Radka and Krassen, the mineralized zones consist predominantly of massive sulphide lenses surrounded by a halo of disseminated mineralization (Tsonev et al., 2000a,b; Kouzmanov, 2001). In addition, at the Elshitsa and Radka deposits there is also subordinate veinlet-type ore (Kouzmanov, 2001). At the Chelopech deposit stockwork ore is also abundant, and in contrast to the high-sulphidation deposits of the southern Panagyurishte district, vein-type ore is volumetrically and economically as important as massive sulphide ore surrounded by disseminated ore (Petrinov, 1994; Jacquat, 2003).

Structural control of the ore bodies and the alteration zones

The Elshitsa and Radka deposits share similar structural controls on each side of the Elshitsa intrusion (Fig. 1). In both deposits, the ore bodies are steeply dipping and, together with the wall rock alteration, they are controlled by WNW-ori-

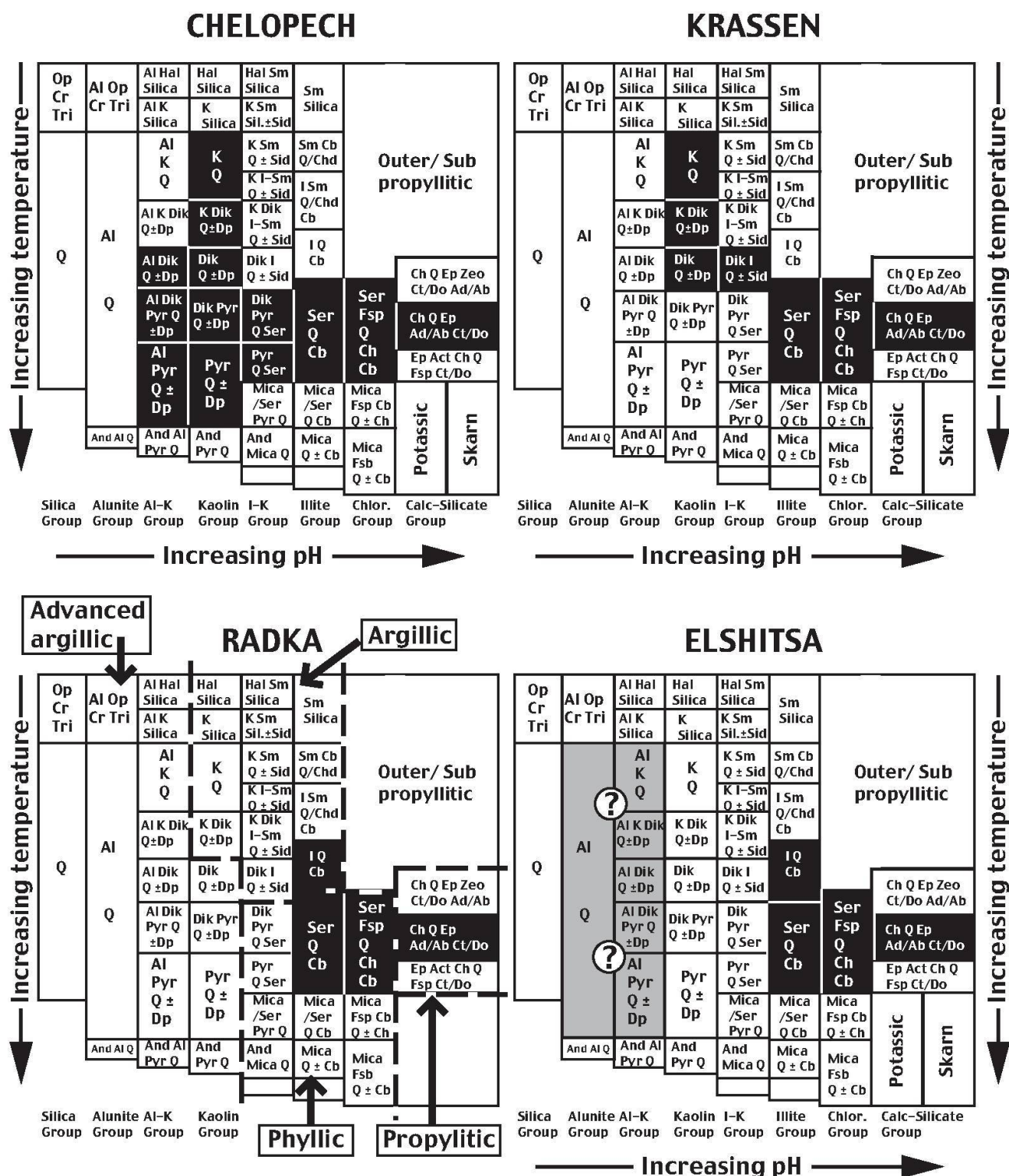


Fig. 5 Hydrothermal alteration assemblages described in the Chelopech (Petrunov, 1989, 1995; Georgieva et al., 2002), Krassen (Tsonev et al., 2000a), Radka (Tsonev et al., 2000b; Kouzmanov, 2001) and Elshitsa deposits (Radonova, 1967, 1970; Chipchakova and Stefanov, 1974; Dimitrov, 1985; Popov et al., 2000a; Kouzmanov, 2001) represented on diagrams after Corbett and Leach (Fig. 4.1, p. 71, 1998) showing the relative stability ranges of alteration mineral assemblages as a function of temperature and pH. The alteration zones (advanced argillic, argillic, phyllic, propylitic) defined in hydrothermal systems (Corbett and Leach, p. 73, 1998) are only represented for the Radka deposit, for the sake of clarity. The characteristic alteration assemblages of each deposit are highlighted with white letters on a black background. For Elshitsa, there is an additional grey background with question marks, because Dimitrov (1985) reports an alunite facies without mentioning the other alteration minerals present in the same facies, therefore the alteration assemblage remains uncertain. Ab—albite; Act—actinolite; Ad—adularia; Al—alunite; And—andalusite; Bio—biotite; Cb—carbonate; Ch—chlorite; Chab—chabazite; Chd—chalcedony; Ch—chlorite; Cr—cristobalite; Ct—calcite; Do—dolomite; Dik—dickite; Dp—diaspore; Ep—epidote; Fsp—feldspar; Hal—halloysite; I—illite; K—kaolinite; Op—opaline silica; Pyr—pyrophyllite; Q—quartz; Ser—sericite; Sid—siderite; Sm—smectite; Tri—tridymite.

Stage of mineralisation	Fe-S	Cu-As-S	Pb-Zn-S	Ca-SO ₄
Pyrite	Chelopech			
	Krassen			
	Radka			
	Elshitsa			
Marcasite	Chelopech			
	Krassen			
	Radka			
	Elshitsa			
Enargite	Chelopech			
	Krassen			
	Radka			
	Elshitsa			
Luzonite	Chelopech			
	Krassen			
	Radka			
	Elshitsa			
Tennantite	Chelopech			
	Krassen			
	Radka			
	Elshitsa			
Chalcopyrite	Chelopech			
	Krassen			
	Radka			
	Elshitsa			
Bornite	Chelopech			
	Krassen			
	Radka			
	Elshitsa			
Goldfieldite	Chelopech			
	Krassen			
	Radka			
	Elshitsa			
Colusite	Chelopech			
	Krassen			
	Radka			
	Elshitsa			
Clausthalite	Chelopech			
	Krassen			
	Radka			
	Elshitsa			
Galena	Chelopech			
	Krassen			
	Radka			
	Elshitsa			
Sphalerite	Chelopech			
	Krassen			
	Radka			
	Elshitsa			
Digenite	Chelopech			
	Krassen			
	Radka			
	Elshitsa			
Chalcocite	Chelopech			
	Krassen			
	Radka			
	Elshitsa			
Covellite	Chelopech			
	Krassen			
	Radka			
	Elshitsa			
Tetrahedrite	Chelopech			
	Krassen			
	Radka			
	Elshitsa			
Native gold - electrum	Chelopech			
	Krassen			
	Radka			
	Elshitsa			
Native silver	Chelopech			
	Krassen			
	Radka			
	Elshitsa			
Tellurides	Chelopech			
	Krassen			
	Radka			
	Elshitsa			

Stage of mineralisation	Fe-S	Cu-As-S	Pb-Zn-S	Ca-SO ₄
Quartz	Chelopech			
	Krassen			
	Radka			
	Elshitsa			
Chalcedony	Chelopech			
	Krassen			
	Radka			
	Elshitsa			
Barite	Chelopech			
	Krassen			
	Radka			
	Elshitsa			
Anhydrite	Chelopech			
	Krassen			
	Radka			
	Elshitsa			
Kaolinite -Dickite	Chelopech	-?-	-?-	
	Krassen	-?-	-?-	
	Radka			
	Elshitsa			
APS minerals	Chelopech	-?-		
	Krassen			
	Radka			
	Elshitsa			
Pyrophyllite	Chelopech	-?-		
	Krassen			
	Radka			
	Elshitsa			
Diaspore	Chelopech	-?-		
	Krassen			
	Radka			
	Elshitsa	-?-		
Alunite	Chelopech	-?-		
	Krassen			
	Radka			
	Elshitsa	-?-	-?-	
Anatase -rutile	Chelopech			
	Krassen			
	Radka			
	Elshitsa			
Carbonate	Chelopech			
	Krassen			
	Radka			
	Elshitsa			
Fluorite	Chelopech			
	Krassen			
	Radka			
	Elshitsa			

Fig. 6 Principal opaque and gangue mineral paragenesis of the Chelopech (Petrunov, 1989, 1994, 1995; Simova, 2000; Jacquat, 2003), Krassen (Tsonev et al., 2000a), Radka (Tsonev et al., 2000b; Kouzmanov, 2001) and Elshitsa deposits (Popov et al., 2000; Kouzmanov, 2001).

ented, sub-parallel normal faults dipping 65°–70° to the north (Fig. 4, Table 1). The mineralized faults merge with major, regional faults at depth, i.e. the Elshitsa fault in the homonymous deposit, and the Varnitsa fault at Radka (Fig. 4). At Elshitsa, there is a subsidiary set of NW-oriented strike-slip faults. The Krassen deposit shows a similar setting to these two deposits, where the mineralization is hosted by about an 80 to 100 m wide, and WNW-oriented breccia zone with a moderate dip of about 50° to the NE, and which is sub-parallel to the Krassen fault. Part of the massive sulphide bodies has been brecciated and overprinted by later tectonic movements along the latter (Tsonev et al., 2000a). This late tectonic

overprint was already noted by Dimitrov (1960) for the entire Panagyurishte district.

At the Chelopech deposit, two predominant fault orientations are recognized: (1) steeply dipping, WNW to NW-oriented strike-slip faults, and (2) NE-oriented thrusts dipping to the SE. Ore formation is overprinted by tectonic movements along both fault types (Antonov and Jelev, 2001; Jelev et al., 2003; Chambefort, 2005). The breccia zones hosting the ore bodies are elongated parallel to the NE-oriented faults, and the trend of the advanced argillic alteration in this deposit follows partly both fault orientations. These observations also reveal a structural control on both ore formation and alteration in this deposit. The Chelopech fault immediately to the southeast of the deposit is a major NE-oriented thrust (Fig. 4), where rocks of various ages have been thrust on the Late Cretaceous host rocks of the Cu–Au deposit (Antonov and Jelev, 2001; Stoykov et al., 2002; Jelev et al., 2003; Chambefort, 2005).

Ore stages and paragenesis

The epithermal deposits of the Panagyurishte district share a number of paragenetic features including (Fig. 6): (1) an early disseminated to massive pyrite stage, followed by (2) an intermediate Au-bearing Cu–As–S stage and (3) a late base-metal stage (predominantly Zn, Pb and Ba). A last sulphate stage ends the mineral paragenesis with subordinate sulphides and native gold at Krassen and Radka according to Tsonev et al. (2000a,b; see Fig. 6).

In all four deposits, the first ore stage consists of pyrite with subordinate fine-grained quartz and marcasite, referred to as Fe–S ore stage and as massive sulphide ore (Fig. 6). Pyrite of this stage has a colloform, globular, fine-grained and fine-layered texture. On a macroscopic scale, the massive ore can be locally banded with centimetric alternations of massive pyrite layers and altered rock (Petrunov, 1994, 1995; Bogdanov et al., 1997; Simova, 2000; Tsonev et al., 2000a; Kouzmanov, 2001; Jacquat, 2003). The massive sulphide ore bodies are discordant with respect to the host rocks (Kouzmanov, 2001; Popov et al., 2003). At Elshitsa, the massive ore bodies and the alteration zones are controlled by faults (Fig. 4), and veins with colloform pyrite crosscut the host dacites (Kouzmanov, 2001). At Chelopech, sedimentary rocks and volcanic tuffs are the preferential host rocks of massive pyrite ore. Accretionary lapilli, oolites, and microfossils are replaced by pyrite in these rocks (Chambefort et al., 2003b; Jacquat, 2003). Massive sulphide ore is typically surround-

ed by a halo of disseminated pyrite (Tsonev et al., 2000 a,b; Kouzmanov, 2001), and mapping at Chelopech reveals in places a progressive transition from disseminated to massive pyrite ore (Jacquat, 2003).

Early massive pyrite is postdated by sulphides and sulphosalts of the Cu–As–S ore stage (Fig. 6). This second ore stage is the Au-bearing and economic ore mined in all deposits. It is typically subdivided into mineral associations (Petrunov, 1994; Simova, 2000; Tsonev et al., 2000a,b; Kouzmanov, 2001; Jacquat, 2003; Kouzmanov et al., 2004), which are not shown in Figure 6 for the sake of clarity. These mineral associations constitute discrete, recurrent depositional events, which overprint each other (Jacquat, 2003). They occur as veins, cavity fillings, breccia matrix, and replacement of early pyrite. In general, enargite and covellite belong to an early depositional event, followed by a tennantite-chalcopryrite-bornite association. Gold of the second ore stage occurs as native metal and tellurides, but the native mineral is the main gold carrier (Bogdanov et al., 1997; Bonev et al., 2002). Micro- to cryptocrystalline quartz is a ubiquitous gangue mineral of this ore stage (Fig. 6).

A third uneconomic Pb–Zn–S ore stage (Fig. 6) consists of a polymetallic assemblage, including galena, sphalerite, pyrite, chalcopryrite, and barite veins. Calcite has also been reported at Elshitsa at this stage (Kouzmanov, 2001). Gold of this stage occurs as the native metal, and also as electrum at Chelopech. At the Chelopech deposit, a large part of the late polymetallic ore stage is developed below and at the periphery of the economic gold-bearing pyrite–enargite–chalcopryrite ore bodies, that is beyond the advanced argillic alteration zone (Petrunov, 1994, 1995; Jacquat, 2003). The Vozdol occurrence is such a physically separate, polymetallic mineralization about 1 km NNE to the Chelopech high-sulphidation ore bodies (Fig. 1). The gangue of the base metal sulphide veins at Vozdol consists of quartz, ankerite, calcite, dolomite, barite and fluorite, and the veins are surrounded by a carbonate, adularia and sericite alteration zone. This occurrence is considered by Mutafchiev and Petrunov (1995) and Popov et al. (2000b) as a low-sulphidation system, and would be reclassified as an intermediate-sulphidation occurrence according to the new terminology of Hedenquist et al. (2000). The spatial association of the polymetallic Vozdol occurrence and the Chelopech deposit is analogous to other base-metal veins at the periphery of high-sulphidation systems (Sillitoe, 1999; Hedenquist et al., 2000, 2001).

There are a number of major mineralogical differences among the Cu–Au epithermal depos-

its of the Panagyurishte district (Fig. 6; Table 1). Enargite is abundant at Chelopech (Petrinov, 1994; Simova, 2000; Jacquat, 2003) and predominant at Krassen (Tsonev et al., 2000a), but it is only a minor phase and restricted to the upper mine levels at Radka and Elshitsa (Tsonev et al., 2000b; Kouzmanov, 2001). Luzonite, the low-temperature dimorph of enargite, has only been reported at Chelopech, where it is a common mineral, and as a minor phase at Krassen. By contrast, native silver is absent at Chelopech, but present at Krassen, Radka and Elshitsa, and tetrahedrite is rare at Chelopech and more abundant in the three other deposits. This explains the distinctly lower Ag/Au ratios at Chelopech relative to Radka and Elshitsa (Table 1). Chelopech also stands out with its predominant gangue mineralogy, with chalcedony and barite being major to abundant phases during the Cu–As–S stage (Petrinov, 1994; Simova, 2000; Jacquat, 2003), whereas barite is only reported as a minor phase at Radka during this ore stage (Tsonev et al., 2000b; Kouzmanov, 2001; Kouzmanov et al., 2004; Fig. 6, Table 1).

Isotopic data

The sulphur isotopic compositions of sulphides and enargite from the high-sulphidation deposits of the Panagyurishte ore district fall between -9 and $+1$ ‰ (CDT), and sulphates yield higher $\delta^{34}\text{S}$ values between $+15$ and $+28$ ‰ (CDT) (Fig. 7a). Such isotopic compositions are consistent with similar data sets from other high-sulphidation epithermal deposits (see Arribas, 1995), and are typically interpreted in terms of sulphur isotope fractionation during hydrolysis of magmatic SO_2 and fluid oxidation with decreasing temperature (Rye, 1993). Temperatures obtained by sulphur isotope geothermometry in the deposits of the Panagyurishte district are typical for high-sulphidation epithermal systems (Arribas, 1995). At Chelopech, two pyrite-anhydrite pairs from deep drilling samples below the main mining level yield temperatures of 302° and 314°C (Jacquat, 2003), and one enargite–barite pair from the main Cu–As–S ore stage gives a temperature of 240°C (Moritz et al., unpublished data). One galena–barite pair at Chelopech and one chalcopyrite–barite at Elshitsa from the third base metal ore stage yield temperatures of 226° and 250°C , respectively (Jacquat, 2003; Kouzmanov et al., 2003).

Radiogenic isotopes show marked differences among the epithermal deposits of the ore district. The Sr and Pb isotopic compositions of gangue and ore minerals are more radiogenic in Chelopech than at Elshitsa and Radka (Figs. 7b and c).

In the case of Sr, this difference cannot be explained by different magmatic sources, since Late Cretaceous magmatic rocks have similar Sr isotopic compositions throughout the Panagyurishte district (Fig. 7b). In all deposits, gangue minerals yield systematically higher $^{87}\text{Sr}/^{86}\text{Sr}$ ratios than the immediate Late Cretaceous volcanic host rocks (Fig. 7b). This reveals that the ore-forming fluid with a low $^{87}\text{Sr}/^{86}\text{Sr}$ ratio (~ 0.7045 – 0.7060 ; Fig. 7b), either of direct magmatic origin or equilibrated with the Late Cretaceous volcanic rocks, interacted with ^{87}Sr -enriched rocks such as Palaeozoic granites ($^{87}\text{Sr}/^{86}\text{Sr} \approx 0.708$ – 0.712 ; Fig. 7b) and metamorphic basement rocks or their sedimentary products, i.e. Turonian sandstones ($^{87}\text{Sr}/^{86}\text{Sr} > 0.715$; Fig. 7b). The higher $^{87}\text{Sr}/^{86}\text{Sr}$ ratios of sulphates at Chelopech reveal a more intense interaction of the ore-forming hydrothermal fluids with radiogenic metamorphic basement rocks and their detrital sedimentary products. The role of Late Cretaceous seawater during ore formation remains ambiguous, because its $^{87}\text{Sr}/^{86}\text{Sr}$ ratio (Koepnick et al., 1985) lies in-between the Sr isotopic compositions of Late Cretaceous magmatic rocks, and of Turonian detrital sedimentary rocks, Palaeozoic granites and metamorphic basement rocks (Fig. 7b).

Interpretation of the more radiogenic Pb isotopic composition of ore minerals from Chelopech relative to deposits of the southern Panagyurishte district (Fig. 7c) remains equivocal. Metamorphic basement rocks and Turonian sandstones contain more radiogenic Pb than Late Cretaceous magmatic rocks and Palaeozoic intrusions of the Panagyurishte district (Kouzmanov, 2001; Kouzmanov et al., 2001). Thus, akin to the Sr isotope data, a more intense leaching of metamorphic rocks and their detrital products by ore-forming hydrothermal fluids could explain the radiogenic nature of ore minerals at Chelopech. Alternatively, the variable Pb isotopic compositions of the epithermal ore minerals might be linked to differences in the composition of the genetically associated magmatism. Although the database is still fragmentary, sulphides from porphyry–Cu deposits of the northern Panagyurishte district apparently yield more radiogenic Pb isotopic compositions than the ones from the southern district (Fig. 7c: Elatsite-Medet-Assarel porphyries vs. Vlaykov Vruh porphyry). Safely assuming that Pb in the porphyry–Cu sulphides is totally to predominantly of magmatic origin, it must be concluded that the Pb isotopic composition of the magmatism is different in both areas, and that there is a larger crustal assimilation in the melts related to the Elatsite, Medet and Assarel porphyry–Cu deposits, and by extension to the Chelopech epither-

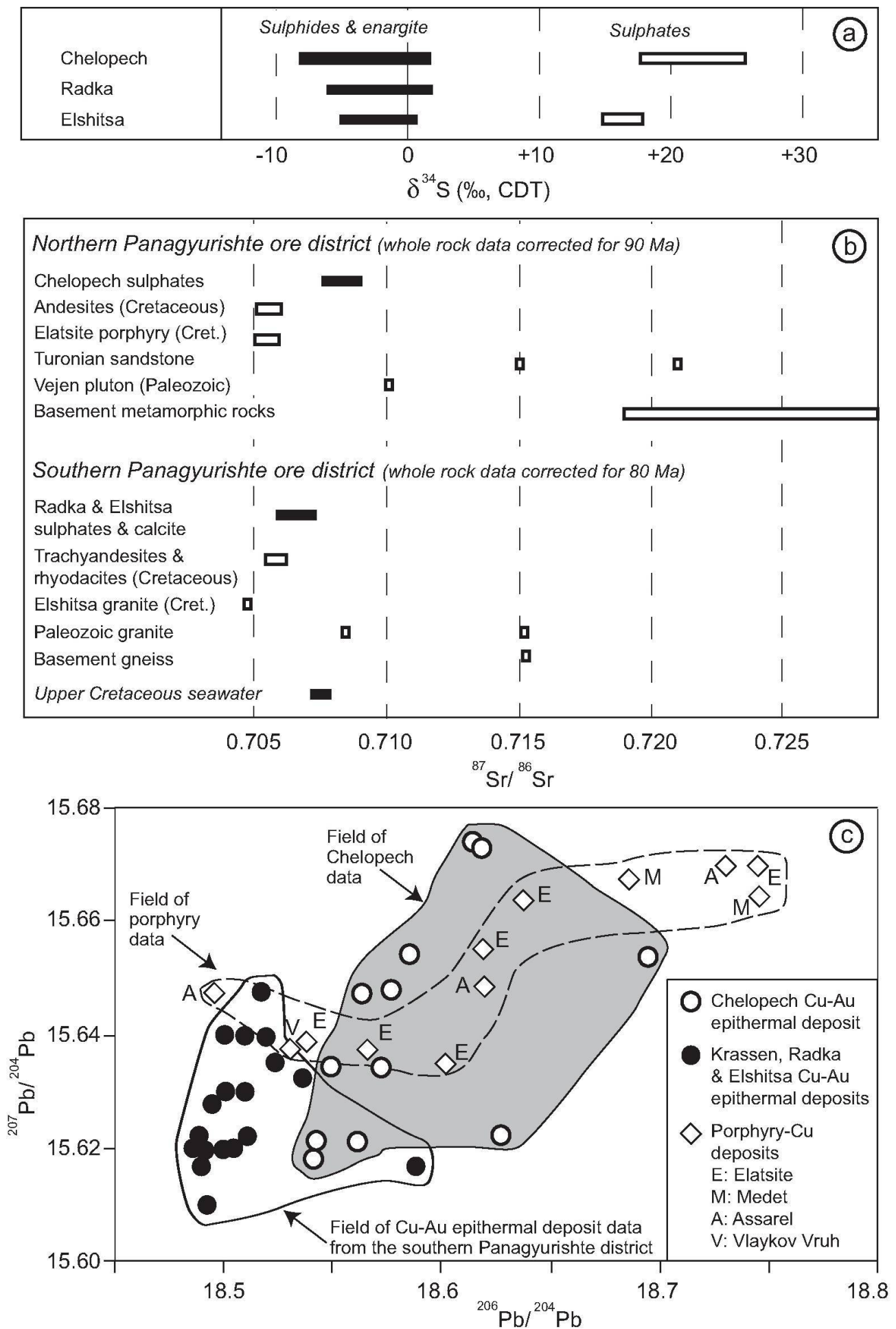


Fig. 7

mal deposit. This is in line with Kamenov et al. (2003a,b), who concluded that magmatism varies in composition from north to south in this district. However, even with additional Pb isotope data for whole rocks, it might be difficult to determine ultimately whether the more radiogenic Pb at Chelopech was leached from metamorphic basement rocks by the ore-forming fluid or if it was introduced into the ore deposit by a hydrothermal fluid of magmatic origin, where the magma has assimilated metamorphic basement rocks.

Discussion

The Panagyurishte Cu–Au epithermal deposits: witnesses of similar ore formation processes in space and time during the evolution of the Srednogie belt

The epithermal Cu–Au deposits of the Panagyurishte district reveal a coherent and continuous sequence of events resulting from similar ore forming processes, typical for high-sulphidation epithermal deposits (Arribas, 1995; Cooke and Simmons, 2000; Hedenquist et al., 2000). Indeed, they share a common paragenesis including an early, massive pyrite stage, an intermediate Au-bearing Cu–As–S stage and a late base metal stage (Fig. 6). The textural and geometrical characteristics of the early, massive pyrite stage document its epigenetic nature, including both structural and lithological controls (Tsonev et al., 2000 a,b; Kouzmanov, 2001; Chambefort et al., 2003b; Jacquat, 2003; Popov et al., 2003). Early massive pyrite ore was formed by precipitation along fractures from a hydrothermal fluid, and by progressive replacement of more permeable rock units such as volcanic tuffs and sedimentary rocks. Such wallrock replacement and lithological control by permeable rock units and bedding planes are relatively common in high-sulphidation deposits (Arribas, 1995; White et al., 1995; Sillitoe, 1997, 1999; Corbett and Leach, 1998). Thus, it is not necessary

to invoke profound changes in the geological environment with time, such as a transition from a submarine to an aerial setting, and early syn-genetic processes (Bogdanov, 1984; Petrunov, 1995; Mutafovchiev and Petrunov, 1996) to explain the genesis of the Cu–Au epithermal deposits of the Panagyurishte ore district. The economic and Au-bearing Cu–As–S stage shows an evolution from an early enargite event to a later tennantite-chalcopyrite-bornite event reflecting a temporal evolution from high to intermediate sulphidation states of the hydrothermal fluid during ore formation, and a low sulphidation state during the subsequent base metal stage (Einaudi et al., 2003). The sulphur isotopic compositions of ore and gangue minerals are coherent with disproportionation of magmatic SO₂ during ore formation (Rye, 1993).

The high ore grade - large tonnage Chelopech deposit: A giant amongst dwarfs in the Panagyurishte district

Despite descriptive and genetic similarities among the Cu–Au epithermal deposits of the Panagyurishte ore district, Chelopech clearly stands out as a giant and as the economically most attractive deposit in this area. The question about fundamental controls leading to the formation of large Cu–Au high-sulphidation epithermal deposits has been addressed in several contributions (e.g. Sillitoe, 1997, 1999; Hedenquist et al., 2000; Tosdal and Richards, 2002). The peculiarities of the Chelopech deposit in contrast to the southern Panagyurishte epithermal deposits are discussed below and may be explained by: (1) an emplacement in a shallower crustal environment, (2) its better preservation, (3) more efficient, local ore-formation processes, and (4) fundamental differences in regional geological controls.

Styles and characteristics of high-sulphidation epithermal systems vary with depth and temperature (Corbett and Leach, 1998; Sillitoe, 1999; Hedenquist et al., 2000). Collectively, several fea-

Fig. 7 Isotope data of epithermal deposits from the Panagyurishte ore district. (a) Sulphur isotope data for the Chelopech (Petrunov, 1994; Moritz et al., 2001; Jacquat, 2003), Radka (Angelkov, 1975; Velinov et al., 1978; Kouzmanov, 2001), and Elshitsa deposits (Kouzmanov, 2001; Kouzmanov et al., 2003). (b) Strontium isotope data for Chelopech sulphates (Moritz et al., 2001, 2003; Jacquat, 2003), Late Cretaceous andesites (Stoykov et al., 2003, 2004), the Vjeen pluton and the Elatsite porphyry (von Quadt et al., 2002), Turonian sandstone and metamorphic basement rocks (Jacquat, 2003; Moritz et al., 2003), Radka and Elshitsa sulphates and calcite, and whole rocks from the southern Panagyurishte district (Kouzmanov, 2001; Kouzmanov et al., 2001), and Late Cretaceous seawater (Koepnick et al., 1985). (c) Lead isotope data of the Chelopech Cu–Au epithermal deposit (Moritz et al., 2001), the Elshitsa, Radka and Krassen Cu–Au epithermal deposits (Amov et al., 1974; Kouzmanov, 2001; Kouzmanov et al., 2001; except two data points from Moritz et al., 2001), and the porphyry-Cu deposits, including Vlaykov Vruh (Kouzmanov, 2001; Kouzmanov et al., 2001), Assarel (Amov et al., 1974; Moritz et al., 2001), Medet (Moritz et al., 2001) and Elatsite (von Quadt et al., 2002, except one data point from Moritz et al., 2001).

tures indicate a shallower depth and temperature environment of ore formation at Chelopech than for the other Cu–Au epithermal deposits of the Panagyurishte district (Table 1): (1) low temperature mineral polymorphs, such as chalcocite and luzonite, are confined to the Chelopech deposit, and luzonite is a subsidiary phase at Krassen, (2) vuggy silica is also restricted to the Chelopech deposit, and (3) the presence of enargite is only rarely reported at the Radka and Elshitsa deposits, and only in the upper mining levels. In addition, volcanic rocks are predominant in the northern part of the Panagyurishte district, whereas intrusive rocks become more abundant to the south (Fig. 1c), therefore revealing a progressively deeper crustal environment in the southern part. As reviewed by Sillitoe (1999), the largest high-sulphidation Au deposits are typically located in the shallow epithermal parts of high-sulphidation systems, where lithological permeability is more favourable.

Alternatively, the differences noted among the Cu–Au epithermal deposits of the Panagyurishte district might be related to different erosion levels, with Chelopech being the deposit with the better preservation. Typically, epithermal deposits have a poor preservation potential due to their shallow depth of formation, and the likelihood of their erosion increases with their age (Cooke and Simmons, 2000; Hedenquist et al., 2000). Thus, it appears as paradoxical that Chelopech, as the oldest epithermal deposit of the study area, had the best preservation potential, but this can be explained by local, late tectonics in each deposit. The overthrust on the Chelopech deposit, post-dating ore formation, together with the late transgressive deposition of sandstone, limestone and a flysch sequence on top of the volcanic host rocks (Fig. 4a), were certainly key factors for its better degree of preservation. By contrast, the faults controlling the ore bodies at Elshitsa and Radka display a normal sense of movement (Figs. 4b,c), therefore an extensional tectonic setting, clearly less favourable for the preservation of epithermal deposits, possibly resulting in the loss of the upper parts of the Elshitsa and Radka deposits. Higher uplift and erosion rates in the southern Panagyurishte district could be due to the continuous, Tertiary plate tectonic convergence of the Rhodopes with the Srednogorie zone (Ivanov, 1988; Ricou et al., 1998). The subordinate presence or absence of advanced argillic mineral assemblages at Elshitsa and Radka, respectively (Fig. 5), may reflect the deeper erosion level of the epithermal deposits, thus preserving only their bottom parts (Hedenquist et al., 2000). In addition to erosion alone, catastrophic gravitational sector collapse of

volcanic edifices, during or following ore formation may also explain the loss of the upper epithermal ore environment at Elshitsa and Radka (e.g. Sillitoe, 1991, 1995).

The formation of large epithermal Au deposits is the result of the confluence of magmatic and hydrothermal factors, the production of large volumes of Au-rich fluids, and an efficient hydrologic system for a focussed fluid flow to the ore site (White et al., 1995; Sillitoe, 1997; Hedenquist et al., 2000). The higher grade and tonnage of the Chelopech deposit reveal that such ore forming processes were particularly favourable in the northern part of the Panagyurishte district. Chelopech is also characterised by major lithological permeability contrasts, with the presence of a diatreme, a location close to a major discordance with basement rocks and a high abundance of sedimentary rocks in its environment (Fig. 4a). Such settings with major lithological permeability contrasts are favourable for the generation of large epithermal Au deposits (Sillitoe, 1997; Hedenquist et al., 2000). The laterally and vertically extensive advanced argillic alteration zone at Chelopech (Fig. 5) documents that the hydrology of its environment has been particularly propitious for the development of acidic conditions due to a large absorption of magmatic vapour by groundwater (Hedenquist et al., 2000).

The higher metallogenic fertility of the northern and older part of the Panagyurishte district reveals a temporal evolution in the ore formation environment on a regional scale. Fundamental variations in space and time of the regional geological context must have occurred between early porphyry-Cu and Cu–Au epithermal ore formation at about 92–90 Ma at Elatsite-Chelopech, Medet and Assarel, and later at about 86 Ma in the Krassen and Elshitsa-Vlaykov Vruh areas (Fig. 1c). The transition from predominantly andesitic volcanism in the northern Panagyurishte district to dacitic in the southern part, with subordinate rhyodacite and rhyolite, reveals a variation in space and time of magma petrogenesis, including a more important crustal input and/or higher degree of fractional crystallisation with time in the southern Panagyurishte district. Major and trace element data support a latitudinal variation in magma petrogenesis (Kamenov et al., 2003a,b), as well as the Pb isotope data of the ore deposits (Fig. 7c, see above). Chelopech has a distinctly lower Ag/Au ratio in comparison to the Cu–Au epithermal deposits of the southern Panagyurishte district (Table 1). According to Sillitoe (1999), magma chemistry is one of the basic controls on Ag/Au ratios in high-sulphidation epithermal deposits. Thus, the variable Ag/Au ratios

of the Panagyurishte epithermal deposits are possibly linked to the spatial and temporal variation of the magma chemistry throughout this ore district.

Although the regional tectonic evolution of the Panagyurishte ore district is not fully understood, one may speculate about the favourable tectonic environments that could explain the higher economic potential of its northern part. According to Tosdal and Richards (2002), the formation of porphyry-Cu and high-sulphidation epithermal deposits is favoured in a geological environment characterised by a near-neutral regional stress field, during transient periods of stress relaxation within a magmatic arc. In the Chelopech area, Jelev et al. (2003) suggest from their field studies a switch from a transtensional to a compressional regime during the Late Cretaceous. Thus, the formation of the Chelopech deposit and, by geographical association, the Elatsite porphyry-Cu deposit may coincide with such a stress relaxation period. Although there is considerable tectonic overprint, the two predominant sets of fault orientations at Chelopech are nearly orthogonal (WNW–NW and NE), and maybe the relic of a regional stress field close to near-neutral during ore formation. Despite the fragmentary tectonic data, the southern Panagyurishte ore district appears to be essentially characterised by strike-slip tectonics along the dextral Iskar-Yavoritsa shear zone (Ivanov et al., 2001; Fig. 1c) that is a geological setting with a pronounced differential regional stress. The smaller Cu–Au epithermal deposits from the southern Panagyurishte district are essentially controlled by WNW-oriented subparallel faults (Figs. 4b–c), therefore consistent with the differential regional stress field. According to Tosdal and Richards (2002), the later tectonic environment is less propitious for the formation of high-sulphidation epithermal deposits, and may explain the lower economic potential of the southern Panagyurishte district.

Conclusions

Ore deposits are markers of specific tectonic, magmatic and fluid circulation events within the evolution of an orogen. The epithermal Cu–Au deposits of the Panagyurishte ore district are no exception to it. These deposits reveal a coherent and continuous sequence of similar ore forming processes, typical for high-sulphidation deposits throughout the regional geological evolution of the Srednogie belt, characterised by a north to south younging of magmatic and tectonic events.

The variation in the composition of the dominant magmatism, the exposed structural level of

the crust, and possibly the variation in tectonics from the northern to the southern part of the Panagyurishte ore district are paralleled by a latitudinal change in the characteristics of the epithermal Cu–Au deposits. Most notably, the northern Panagyurishte ore district appears as the economically fertile part of the Central Srednogie belt. At this stage of knowledge, no unique explanation can be offered for this latitudinal change in ore deposit characteristics, but they are likely related to emplacements at different depths of the deposits, differences in degrees of preservation as a function of post-ore tectonics and/or sedimentary processes, efficiency of ore formation, and fundamental modifications of regional controls, such as magma petrogenesis and/or tectonic regimes. This study on the epithermal Cu–Au deposits clearly reveals that ore deposit genesis and their characteristics, in particular tonnage and grade, are very sensitive to variations of regional geological processes.

Further studies should try to understand why epithermal Cu–Au deposits in the northern Panagyurishte ore district, such as Chelopech and Krassen, are linked to a dominantly andesitic volcanism, whereas the same deposits in the southern Panagyurishte district are linked to or post-date dacitic magmatism, which itself postdates andesitic magmatism. An additional, open question is linked to the observation that a majority of the ore bodies within the Cu–Au epithermal deposits are controlled by WNW-oriented faults on a local scale, but that the ore deposit alignment on a regional scale has a NNW orientation. Paradoxically, it appears that, despite the north to south variation of geological and ore deposit characteristics within the Panagyurishte ore district, the deep crustal, fundamental control on episodic ore formation remained constant throughout its 14 Ma-long protracted Late Cretaceous magmatic and tectonic evolution.

Acknowledgements

This work was supported by the Swiss National Science Foundation through the SCOPES Joint Research Project 7BUPJ062276 and research grant 21-59041.99. The authors would like to thank I. Chambeftor (University of Geneva) for discussions. The staff of the Geology Department from the Chelopech Mine, BIMAK AD mining group are gratefully acknowledged for arranging access to the mine, and sharing geological information. Critical reviews by Colin Andrew (Hareward Ventures, Sofia, Bulgaria) and Albrecht von Quadt (ETH-Zürich, Switzerland) helped us to improve the manuscript. This is a contribution to the ABCD-GEODE research program supported by the European Science Foundation.

References

- Aiello, E., Bartolini, C., Boccaletti, M., Gocev, P., Karagjuleva, J., Kostadinov, V. and Manetti, P. (1977): Sedimentary features of the Srednogorie zone (Bulgaria): an Upper Cretaceous intra-arc basin. *Sedimentary Geol.* **19**, 39–68.
- Amov, B.G., Bogdanov, B. and Baldjieva, C. (1974): Lead isotope composition and some features concerning the genesis and the age of the ore deposits in south Bulgaria. (in Russian). In: Problems of Ore Deposition, Proceedings of the 4th IAGOD Symposium, Varna, Bulgaria, **vol. 2**, 13–25.
- Angelkov, K. (1975): Isotopic composition of sulfur in Radka, Chelopech, Medet and Vlaykov Vruh deposits (in Bulgarian). *Rudodobiv* **8**, 4–7.
- Antonov, M. and Jelev, V. (2001): Transpression and oblique fold-and-thrust structures in the Chelopech ore field (Bulgaria). *Annual Univ. Mining Geol.* **43–44**, 45–49.
- Arribas, A. (1995): Characteristics of high-sulfidation epithermal deposits, and their relation to magmatic fluid. In: Thompson, J.F.H. (ed.): Magmas, fluids and ore deposits. *Mineral. Assoc. Canada, Short Course Series*, **23**, 419–454.
- Bayraktarov, I., Antova, N., Nikolov, G., Rankova, T. and Chamberski, H. (1996): Geodynamic environments during the Late Cretaceous in Bulgaria and their metallogeny. In: Popov P. (ed.): Plate tectonic aspects of the Alpine metallogeny in the Carpatho-Balkan region, UNESCO- IGCP project 356, Proceedings of the annual meeting, Sofia, Bulgaria, 1996, v. 2, 45–56.
- Berger, B.R. and Henley, R.W. (1989): Advances in understanding of epithermal gold-silver deposits, with special reference to the Western United States. In: Keays, R.R., Ramsay, W.R.H. and Groves, D.I. (eds): The geology of gold deposits: the perspective in 1988, *Econ. Geol. Monograph* **6**, 405–423.
- Berza, T., Constantinescu, E. and Vlad, S.-N. (1998): Upper Cretaceous magmatic series and associated mineralization in the Carpathian-Balkan region. *Resource Geology* **48**, 291–306.
- Boccaletti, M., Manetti, P. and Peccherillo, A. (1974): The Balkanides as an instance of back-arc thrust belt: Possible relations with the Hellenides. *Geol. Soc. Am. Bull.* **85**, 1077–1084.
- Boccaletti, M., Manetti, P., Peccherillo, A. and Stanisheva-Vassileva, G. (1978): Late Cretaceous high-potassium volcanism in eastern Srednogorie, Bulgaria. *Geol. Soc. Am. Bull.* **89**, 439–447.
- Bogdanov, B. (1984): Hydrothermal systems of massive sulphide, porphyry-copper and vein copper deposits of Sredna Gora zone in Bulgaria. In: Proceed. VI Symp. IAGOD, Stuttgart, Germany, 63–67.
- Bogdanov, B. and Bogdanova, R. (1974): The Radka copper-pyrite deposit. In: Dragov, P. and Kolkovski, B. (eds.): Twelve ore deposits of Bulgaria. IV symposium IAGOD, Varna, 1974, 114–133.
- Bogdanov, B., Popov, P. and Obretenov, N. (1970): Structural features of the Elshitsa ore field. (in Bulgarian). *Rev. Bulg. Geol. Soc.* **31**, 303–313.
- Bogdanov, K., Tsonev, D. and Kouzmanov, K. (1997): Mineralogy of gold in the Elshitsa massive sulphide deposit, Sredna Gora zone, Bulgaria. *Mineral. Deposita* **32**, 219–229.
- Boncev, E. (1988): Notes sur la tectonique alpine des Balkans. *Bull. Soc. Géol. Fr.* **IV**, 241–249.
- Bonev, I.K., Kerestedjian, T., Atanassova, R. and Andrew, C.J. (2002): Morphogenesis and composition of native gold in the Chelopech volcanic-hosted Au–Cu epithermal deposit, Srednogorie zone, Bulgaria. *Mineral. Deposita* **37**, 614–629.
- Chambefort, I., von Quadt, A. and Moritz, R. (2003a): Volcanic environment and geochronology of the Chelopech high-sulfidation epithermal deposit, Bulgaria: regional relationship with associated deposits. European Union of Geosciences 12th Biennial Meeting, Nice, France, 6–11 Avril 2003. Abstract on CD: EAE03-A-00569.
- Chambefort, I., Moritz, R., Jacquat, S. and Petrunov, R. (2003b): Influence of the volcanic environment on hydrothermal fluid circulation: Example of the Chelopech Au–Cu high-sulfidation epithermal deposit, Bulgaria. IAVCEI XXth meeting, Sapporo, Japan, 30 June–11 July 2003. Abstract volume A, p. 520.
- Cheshitev, G., Milanova, V., Sapounov, I. and Choumachenko, P. (1995): Explanatory note to the geological map of Bulgaria in scale 1:100 000, Teteven map sheet (in Bulgarian). Avers, Sofia.
- Chipchakova, S. and Stefanov, D. (1974): Genetic types of argillites at the height of Golyamo Petelovo and in the Elshitsa-West copper-pyrite deposit in the Panagyurishte ore district (in Bulgarian). In: Alexiev, E., Mincheva-Stefanova, J. and Radonova, T. (eds.): Mineral Genesis, Geological Institute-Bulgarian Academy of Science, 437–454.
- Chipchakova, S. and Lilov, P. (1976): About the absolute age of Upper Cretaceous magmatic rocks from the western part of the Central Srednogorie and related ore deposits (in Russian). *Comptes rendus Acad. bulg. Sci.* **29**, 101–104.
- Chipchakova, S., Karadjova, B., Andreev, A. and Stefanov, D. (1981): Rare alkalis in wall rock metasomites of massive-pyrite deposits in Central Srednogorie, Bulgaria. *Geol. Balcanica* **11**, 89–102.
- Ciobanu, C.L., Cook, N.J. and Stein, H. (2002): Regional setting and geochronology of the Late Cretaceous banatitic magmatic and metallogenic belt. *Mineral. Deposita* **37**, 541–567.
- Cooke, D.R. and Simmons, S.F. (2000): Characteristics and genesis of epithermal gold deposits. In: Hagemann, S.G. and Brown, P.E. (eds): Gold in 2000, *Reviews in Economic Geology* **13**, 221–244.
- Corbett, G.J. and Leach, T.M. (1998): Southwest Pacific Rim gold-copper systems: structure, alteration, and mineralization. *Soc. Econ. Geol. Spec. Publ.* **6**, 237 pp.
- Dabovski, C. (1988): Precambrian in the Srednogorie zone (Bulgaria). In: Cogne, J., Kozhoukharov, D. and Krautner, H.G. (eds.): Precambrian in younger fold belts, Essex, 841–847.
- Dabovski, C., Zagorchev, I., Rouseva, M. and Chounev, D. (1972): Paleozoic granitoids in the Sushtinska Sredna Gora (in Bulgarian). *Annual UGP* **16**, 57–92.
- Dabovski, C., Harkovska, A., Kamenov, B., Mavrudchiev, B., Stanisheva-Vassileva, G. and Yanev, Y. (1991): A geodynamic model of the Alpine magmatism in Bulgaria. *Geol. Balcanica* **21**, 3–15.
- Dimitrov, C. (1960): Magmatismus und Erzbildung im Erzgebiet von Panagjuriste. *Freib. Forschungshefte: C.* **79**, 67–81.
- Dimitrov, C. (1983): Senonian initial volcanic rocks south of Panagjuriste and Strelca (in Bulgarian). *Rev. Bulg. Geol. Soc.* **44**, 95–128.
- Dimitrov, C. (1985): On the genesis of the Elshitsa, Radka, Krassen and Bialata Prast ore deposits, Panagyurishte area (in Bulgarian). *Rev. Bulg. Geol. Soc.* **46**, 257–266.
- Dobrev, T., Dimitrov, I., Pishtalov, S., Ivanova, V. and Radkov, R. (1967): Studies on the deep structure of east Bulgaria based on geophysical data (in Bulgarian). *Rev. Bulg. Geol. Soc.* **28**, 35–54.
- Einaudi, M.T., Hedenquist, J.W. and Inan, E.E. (2003): Sulfidation state of fluids in active and extinct hy-

- drothermal systems: Transitions from porphyry to epithermal environments. In: Simmons, S.F. and Graham, I. (eds.): Volcanic, geothermal, and ore-forming fluids: Rulers and witnesses of processes within the Earth. *Soc. Econ. Geol. Spec. Publ.* **10**, 285–313.
- Georgieva, S., Velinova, N., Petrunov, R., Moritz, R. and Chambefort, I. (2002): Aluminium phosphate-sulphate minerals in the Chelopech Cu–Au deposit: Spatial development, chemistry and genetic significance. *Geochem. Mineral. Petrol.* **39**, 39–51.
- Haydoutov, I. (2001): The Balkan island-arc association in West Bulgaria. *Geol. Balcanica* **31**, 109–110.
- Heald, P., Foley, N. and Hayba, D. (1987): Comparative anatomy of volcanic-hosted epithermal deposits: acide-sulfate and adularia-sericite types. *Econ. Geol.* **82**, 1–26.
- Hedenquist, J.W. and Henley, R.W. (1985): The importance of CO₂ on freezing point measurements of fluid inclusions: Evidence from active geothermal systems and implications for epithermal ore deposition. *Econ. Geol.* **80**, 1379–1406.
- Hedenquist, J.W. and Lowenstern, J.B. (1994): The role of magma in the formation of hydrothermal ore deposits. *Nature* **370**, 519–527.
- Hedenquist, J.W., Arribas, A. and Gonzalez-Urien, E. (2000): Exploration for epithermal gold deposits. In: Hagemann, S.G. and Brown, P.E. (eds): Gold in 2000, *Reviews in Economic Geology* **13**, 245–277.
- Hedenquist, J.W., Claveria, R.J.R. and Villafuerte, G.P. (2001): Types of sulfide-rich epithermal deposits and their affiliation to porphyry systems: Lepanto-Victoria-Far Southeast deposits, Philippines, as examples. Pro Explo, CD with abstracts, Lima, Peru.
- Heinrich, C.A. and Neubauer, F. (2002): Cu–Au–Pb–Zn–Ag metallogeny of the Alpine-Balkan-Carpathian-Dinaride geodynamic province. *Mineral. Deposita* **37**, 533–540.
- Ivanov, Z. (1988): Aperçu général sur l'évolution géologique et structurale du massif des Rhodopes dans le cadre des Balkanides. *Bull. Soc. Géol. Fr.* **IV**, 227–240.
- Ivanov, Z. (1998, in press.): Tectonics of Bulgaria (in Bulgarian).
- Ivanov, Z., Henry, B., Dimov, D., Georgiev, N., Jordanova, D. and Jordanova, N. (2001): New model for Upper Cretaceous magma emplacement in the southwestern parts of Central Srednogorie – Petrostructural and AMS data. In: ABCD-GEODE 2001, Workshop, Vata Bai, Romania, Abstracts volume, 60–61.
- Jacquat, S. (2003): Etude paragénetique et géochimique du gisement épithermal d'or et de cuivre de type "high-sulfidation" de Chelopech (Bulgarie). Unpublished M.Sc. thesis, Dept Mineralogy, Uni. Geneva, Switzerland, 171 pp.
- Jelev, V., Antonov, M., Arizanov, A. and Arnaudova, R. (2003): On the genetic model of Chelopech volcanic structure (Bulgaria). 50 Years University of Mining and Geology "St Ivan Rilski", *Annual vol.* **46**, part I, 47–51.
- Kamenov, B.K., von Quadt, A. and Peytcheva, I. (2002): New insight into petrology, geochemistry and dating of the Vejen pluton, Bulgaria. *Geochem. Mineral. Petrol.* **39**, 3–25.
- Kamenov, B., Moritz, R., Nedialkov, R., Peytcheva, I., von Quadt, A., Stoykov, S., Yaney, Y. and Zartova, A. (2003a): Petrology of the Late Cretaceous ore-magmatic centers from the Central Srednogorie, Bulgaria: Magma evolution and sources. In: Neubauer, F. and Handler, R. (eds): Programme and abstracts, Final ABCD-GEODE 2003 workshop, Seggau, Austria, 22–24 March 2003, p. 30.
- Kamenov, B., Nedialkov, R., Yaney, Y. and Stoykov, S. (2003b): Petrology of the late Cretaceous ore-magmatic-centres in the Central Srednogorie, Bulgaria. In: Bogdanov, K. and Strashimirov, S. (eds.): Cretaceous porphyry-epithermal systems of the Srednogorie zone, Bulgaria, *Society of Economic Geologists Guidebook series* **36**, 27–46.
- Kamenov, B., von Quadt, A. and Peytcheva, I. (2003c): New petrological, geochemical and isotopic data bearing on the genesis of Capitan-Dimitriev pluton, Central Srednogorie, Bulgaria. In: Neubauer, F. and Handler, R. (eds.): Programme and abstracts, Final ABCD-GEODE 2003 workshop, Seggau, Austria, 22–24 March 2003, p. 31.
- Katskov, N. and Iliev, K. (1993): Panagyurishte map sheet (in Bulgarian), In: Explanatory note to the Geological Map of Bulgaria in scale 1:100000, 53 pp.
- Koepnick, R.B., Burke, W.H., Denison, R.E., Hetherington, E.A., Nelson, H.F., Otto, J.B. and Waite, L.E. (1985): Construction of the seawater ⁸⁷Sr/⁸⁶Sr curve for the Cenozoic and Cretaceous: supporting data. *Chem. Geol.* **58**, 55–81.
- Kouzmanov, K. (2001): Genèse de la concentration en métaux de base et précieux de Radka et Elshitsa (zone de Sredna Gora, Bulgarie): une approche par l'étude minéralogique, isotopique et des inclusions fluides. Unpublished Ph.D. thesis, University of Orléans, France, 437 pp.
- Kouzmanov, K., Bailly, L., Ramboz, C., Rouer, O. and Bény, J.-M. (2002): Morphology, origin and infrared microthermometry of fluid inclusions in pyrite from the Radka epithermal copper deposit, Srednogorie zone, Bulgaria. *Mineral. Deposita* **37**, 599–613.
- Kouzmanov, K., Moritz, R., Chiaradia, M., Fontignie, D. and Ramboz, C. (2001): Sr and Pb isotope study of Au–Cu epithermal and porphyry-Cu deposits from the southern part of the Panagyurishte district, Sredna Gora zone, Bulgaria. In: Piestrzynski, A. et al. (eds.): Mineral deposits at the beginning of the 21st century, Proceedings 6th biennial SGA meeting, Krakow, Poland, 539–542.
- Kouzmanov, K., Ramboz, C., Lerouge, C., Deloule, E., Beaufort, D. and Bogdanov, K. (2003): Stable isotopic constraints on the origin of epithermal Cu–Au and related porphyry copper mineralisations in the southern Panagyurishte district, Srednogorie zone, Bulgaria. In: Eliouopoulos, D.G. et al. (eds.): Mineral exploration and sustainable development, Proceedings 7th biennial SGA meeting, Athens, Greece, 24–28 August 2003, Millpress Rotterdam, 1181–1184.
- Kouzmanov, K., Ramboz, C., Bailly, L. and Bogdanov, K. (2004): Genesis of high-sulfidation vinciennite-bearing Cu–As–Sn (Au) assemblage from the Radka copper epithermal deposit, Bulgaria: Evidence from mineralogy and infrared microthermometry of enargite. *Can. Mineralogist* **42**, 1501–1521.
- Lips, A.L.W. (2002): Correlating magmatic-hydrothermal ore deposit formation over time with geodynamic processes in SE Europe. In: Blundell, D.J., Neubauer, F. and von Quadt, A. (eds): The timing and location of major ore deposits in an evolving orogen. *Geol. Soc. London Spec. Publication* **204**, 69–79.
- Moev, M. and Antonov, M. (1978): Stratigraphy of the Upper Cretaceous in the eastern part of the Sturgel-Chelopech strip (in Bulgarian). *Ann. de l'Ec. Sup. Min. Géol.* **23**, 7–30.
- Moritz, R., Chambefort, I., Chiaradia, M., Fontignie, D., Petrunov, R., Simova, S., Arisanov, A. and Doychev, P. (2001): The Late Cretaceous high-sulfidation Au–Cu Chelopech deposit, Bulgaria: geological setting, paragenesis, fluid inclusion microthermometry of

- enargite, and isotope study (Pb, Sr, S). In: Piestrzynski, A. et al. (eds.): Mineral deposits at the beginning of the 21st century, Proceedings 6th biennial SGA meeting, Krakow, Poland, 547–550.
- Moritz, R., Jacquat, S., Chambefort, I., Fontignie, D., Petrunov, R., Georgieva, S. and von Quadt, A. (2003): Controls of ore formation at the high-sulphidation Au–Cu Chelopech deposit, Bulgaria: evidence from infrared fluid inclusion microthermometry of enargite and isotope systematics of barite. In: Eliouopoulos, D.G. et al. (eds.): Mineral exploration and sustainable development, Proceedings 7th biennial SGA meeting, Athens, Greece, 24–28 August 2003, Millpress Rotterdam, 1209–1212.
- Mutafchiev, I. and Petrunov, R. (1996): Geological genetic models of ore-deposit formation in the Panagyurishte-Etropole ore region. Unpublished report for Chelopech LTD, Sofia, 69 pp.
- Nedialkov, R. and Zartova, A. (2002): Magmatism of the Assarel area and its ore generating capability. In: Moritz, R. and von Quadt, A. (eds.): GEODE workshop on the Srednogie zone, April 2002, Sofia, Bulgaria, Abstract volume, p. 13.
- Neubauer, F. (2002): Contrasting Late Cretaceous with Neogene ore provinces in the Alpine-Balkan-Carpathian-Dinaride collision belt. In: Blundell, D.J., Neubauer, F. and von Quadt, A. (eds.): The timing and location of major ore deposits in an evolving orogen. *Geol. Soc. London Spec. Publication* **204**, 81–102.
- Petrunov, R. (1989): Hypogene sulphate-sulphide zoning in a copper-pyrite deposit. *Comptes rendus Bulg. Acad. Sci.* **42**, 71–74.
- Petrunov, R. (1994): Mineral parageneses and physico-chemical conditions of ore-formation in the Chelopech deposit (in Bulgarian). Unpublished Ph.D. thesis, Geological Institute–BAS, Sofia, Bulgaria, 178 pp.
- Petrunov, R. (1995): Ore mineral parageneses and zoning in the deposit of Chelopech (in Bulgarian), *Geochem. Mineral. and Petrol.* **30**, 89–98.
- Petrunov, R., Dragov, P. and Neykov, H. (1991): Polyelemental (with As, Sn, V, Bi, Ag, Te, Ge, Se etc.) mineralization in Assarel porphyry-copper deposit (in Bulgarian). *Rev. Bulg. Geol. Soc.* **52**, 1–7.
- Peytcheva, I. and von Quadt, A. (2003): U–Pb–zircon isotope system in mingled and mixed magmas: an example from Central Srednogie, Bulgaria. EGS-AGU-EUG joint assembly Nice, France, April 2003, Geophysical research abstracts, vol. 5, abstract EAE03-A-09177.
- Peytcheva, I., von Quadt, A., Kamenov, B., Ivanov, Z. and Georgiev, N. (2001): New isotope data for Upper Cretaceous magma emplacement in the southern and south-western parts of Central Srednogie. In: ABCD-GEODE 2001, Workshop, Vata Bai, Romania, Abstracts volume, 82–83.
- Peytcheva, I., von Quadt, A., Kouzmanov, K. and Bogdanov, K. (2003): Elshitsa and Vlaykov Vruh epithermal and porphyry Cu(–Au) deposits of Central Srednogie, Bulgaria: source and timing of magmatism and mineralisation. In: Eliouopoulos, D.G. et al. (eds.): Mineral exploration and sustainable development, Proceedings 7th biennial SGA meeting, Athens, Greece, 24–28 August 2003, Millpress Rotterdam, 371–373.
- Popov, K. (2001a): Geology of the southern part of the Panagyurishte ore region. *Annual Univ. Mining Geol. vol.* **43–44**, 51–63.
- Popov, K. (2001b): Porphyry copper – massive sulphide system in the Radka ore district (Bulgaria). *Annual Univ. Mining Geol. vol.* **43–44**, 65–71.
- Popov, P. (1987): Tectonics of the Banat-Srednogie rift. *Tectonophysics* **143**, 209–216.
- Popov, P. (2002): Alpine geotectonic evolution and metallogeny of the Eastern part of the Balkan peninsula. University of Mining and Geology “St Ivan Rilski”, *Annual vol.* **45**, part I, 33–38.
- Popov, P. and Kovachev, V. (1996): Geology, composition and genesis of the mineralizations in the Central and Southern part of the Elatsite-Chelopech ore field. In: Popov P. (ed.): Plate tectonic aspects of the Alpine metallogeny in the Carpatho-Balkan region, UNESCO-IGCP project 356, Proceedings annual meeting, Sofia, Bulgaria, 1996, **vol. 1**, 159–170.
- Popov, P. and Popov, K. (1997): Metallogeny of Panagyurishte ore region. In: Romic, K. and Konzulovic, R. (eds.): Symposium «Ore Deposits Exploration», Proceedings, Belgrade, 2–4 April 1997, 327–338.
- Popov, P., Tsonev, D. and Kanazirski, M. (2000a): Elshitsa ore field. In: Strashimirov S. and Popov, P. (eds.): Geology and metallogeny of the Panagyurishte ore region (Srednogie zone, Bulgaria), ABCD-GEODE 2000 workshop, Guidebook to excursions, 40–46.
- Popov, P., Petrunov, R., Kovachev, V., Strashimirov, S. and Kanazirski, M. (2000b): Elatsite-Chelopech ore field. In: Strashimirov S. and Popov, P. (eds.): Geology and metallogeny of the Panagyurishte ore region (Srednogie zone, Bulgaria), ABCD-GEODE 2000 workshop, Guidebook to excursions, 8–18.
- Popov, P., Radichev, R. and Dimovski, S. (2002): Geology and evolution of the Elatsite-Chelopech porphyry-copper-massive sulfide ore field (in Bulgarian). *Annual Univ. Mining Geol.* **43–44**, 31–44.
- Popov, P., Strashimirov, S., Popov, K., Petrunov, R., Kanazirski, M. and Tzonev, D. (2003): Main features in geology and metallogeny of the Panagyurishte ore region. 50 Years University of Mining and Geology “St Ivan Rilski”, *Annual vol.* **46**, part I, 119–125.
- Radonova, T. (1962): Primary mineralization and wall-rock alterations in the area of Radka mine, in the vicinity of Panagyurishte (in Bulgarian), *Travaux sur la Géologie de Bulgarie, Série «Géochimie, Gîtes métallifères et non-métallifères»* **3**, 93–128.
- Radonova, T. (1967): Dumortierite from the area of the Elshitsa ore deposit, district of Panagyurishte (in Bulgarian), *Rev. Bulg. Geol. Soc.* **28**, 191–195.
- Radonova, T. (1970): Certain petrogenetic factors controlling copper pyritic mineralizations in the Central Srednogie (in Bulgarian), *Rev. Bulg. Geol. Soc.* **31**, 323–328.
- Radonova, T. and Velinov, I. (1974): Relationship between propylites, secondary quartzites and ore deposition in the Central and Western Srednogie (Bulgaria), (in Russian). In: Metasomatism and ore deposition, Nauka, Moscow, 60–69.
- Ricou, L.-E., Burg, J.-P., Godfriaux, I. and Ivanov, Z. (1998): Rhodope and Vardar: the metamorphic and the olistostromic paired belts related to the Cretaceous subduction under Europe. *Geodynamica Acta* **11**, 285–309.
- Rye, R.O. (1993): The evolution of magmatic fluids in the epithermal environment: The stable isotope perspective. *Econ. Geol.* **88**, 733–753.
- Sillitoe, R.H. (1991): Gold metallogeny of Chile – An introduction. *Econ. Geol.* **86**, 1187–1205.
- Sillitoe, R.H. (1995): The influence of magmatic-hydrothermal models on exploration strategies for volcano-plutonic arcs. In: Thompson, J.F.H. (ed.): Magmas, fluids and ore deposits. *Mineral. Assoc. Canada, Short Course Series*, **23**, 511–525.
- Sillitoe, R.H. (1997): Characteristics and controls of the largest porphyry copper-gold and epithermal gold

- deposits in the circum-Pacific region. *Austral. J. Earth Sci.* **44**, 373–388.
- Sillitoe, R.H. (1999): Styles of high-sulphidation gold, silver and copper mineralisation in porphyry and epithermal environments. In: Weber, G. (ed.): *Austr. Inst. Min. Metal.*, PacRim'99, Bali, Indonesia, 10–13 October, Proceedings, 29–44.
- Simova, S. (2000): Mineral composition and paragenetic sequences in the ore mineralization of 405 horizon in the Chelopech deposit (in Bulgarian). Unpublished M.Sc. thesis, Sofia University, Bulgaria, 68 pp.
- Stanisheva-Vassileva, G. (1980): The Upper Cretaceous magmatism in Srednogorie zone, Bulgaria: a classification attempt and some implications. *Geol. Balcanica* **10**, 15–36.
- Stoykov, S. and Pavlishina, P. (2003): New data for Turoanian age of the sedimentary and volcanic succession in the southeastern part of Etropole Stara Planina mountain, Bulgaria. *Comptes rendus Acad. Bulg. Sci.* **56**, 55–60.
- Stoykov, S., Yanev, Y., Moritz, R. and Katona, I. (2002): Geological structure and petrology of the Late Cretaceous Chelopech volcano, Srednogorie magmatic zone. *Geochem. Mineral. Petrol.* **39**, 27–38.
- Stoykov, S., Yanev, Y., Moritz, R. and Fontignie, D. (2003): Petrology, Sr and Nd isotope signature of the Late Cretaceous magmatism in the south-eastern part of the Etropole Stara Planina, Srednogorie magmatic zone. 50 Years University of Mining and Geology “St Ivan Rilski”, *Annual vol.* **46**, part I, 161–166.
- Stoykov, S., Peytcheva, I., von Quadt, A., Moritz, R., Frank, M. and Fontignie, D. (2004): Timing and magma evolution of the Chelopech volcanic complex, Bulgaria. *Schweiz. Mineral. Petrogr. Mitt.* **84**, 101–117.
- Strashimirov, S., Petrunov, R. and Kanazirski, M. (2002): Porphyry-copper mineralisation in the central Srednogorie zone, Bulgaria. *Mineral. Deposita* **37**, 587–598.
- Tarkian, M., Hüken, U., Tokmakchieva, M. and Bogdanov, K. (2003): Precious-metal distribution and fluid-inclusion petrography of the Elatsite porphyry copper deposit, Bulgaria. *Mineral. Deposita* **38**, 261–281.
- Tosdal, R.M. and Richards, J.P. (2002): Tectonic setting: A critical link in the formation of porphyry-Cu and epithermal deposits. In: Vearncombe, S. (ed.): *Applied structural geology for mineral exploration and mining*, Abstract volume, 23–25 Sept. 2002, Kalgoorlie, Western Australia. Australian Inst. Geoscientists Bull. **36**, p. 209–211.
- Tsonev, D., Popov, K. and Kanazirski, M. (2000a): Krasen-Petolovo ore field. In: Strashimirov S. and Popov, P. (eds.): *Geology and metallogeny of the Panagyurishte ore region (Srednogorie zone, Bulgaria)*, ABCD-GEODE 2000 workshop, Guidebook to excursions, 26–31.
- Tsonev, D., Popov, K., Kanazirski, M. and Strashimirov, S. (2000b): Radka ore field. In: Strashimirov S. and Popov, P. (eds.): *Geology and metallogeny of the Panagyurishte ore region (Srednogorie zone, Bulgaria)*, ABCD-GEODE 2000 workshop, Guidebook to excursions, 32–39.
- Tsvetkov, K. (1976): Some data of the geological-geophysical prospecting for the distribution of the copper-porphyry mineralizations in the Panagyurishte region (in Russian). In: *Problemi Rudoobrasovania, Publ. House Bulg. Acad. Sci.* **1**, 191–198.
- Velinov, I.A., Loginov, V.P., Nossik, L.P., Radonova, T.G. and Russinov, V.L. (1978): Particularities of the genesis of massive pyrite deposits from the Srednogorie zone in Bulgaria and Yugoslavia (in Russian). In: Korjinskiy, D.S., Jarikov, V.A., Landa, E.A., Omelianenko, B.I., Percev, N.N. and Rass, I.T. (eds.): *Metasomatism and ore formation*, Moscow, 176–183.
- von Quadt, A., Peytcheva, I., Kamenov, B., Fanger, L., Heinrich, C.A. and Frank, M. (2002): The Elatsite porphyry copper deposit in the Panagyurishte ore district, Srednogorie zone, Bulgaria: U–Pb zircon geochronology and isotope-geochemical investigations of magmatism and ore genesis. In: Blundell, D.J., Neubauer, F. and von Quadt, A. (eds.): *The timing and location of major ore deposits in an evolving orogen*. *Geol. Soc. London Spec. Publication* **204**, 81–102.
- von Quadt, A., Peytcheva, I., Heinrich, C., Frank, M., Cvetkovic, V. and Banjesevic, M. (2003a): Evolution of the Cretaceous magmatism in the Apuseni-Timok-Srednogorie metallogenic belt and implications for the geodynamic reconstructions: new insight from geochronology, geochemistry and isotope studies. In: Neubauer, F. and Handler, R. (eds.): *Programme and abstracts, Final ABCD-GEODE 2003 workshop*, Seggau, Austria, 22–24 March 2003, p. 60.
- von Quadt, A., Peytcheva, I. and Cvetkovic, V. (2003b): Geochronology, geochemistry and isotope tracing of the Cretaceous magmatism of east-Serbia and Panagyurishte district (Bulgaria) as part of the Apuseni-Timok-Srednogorie metallogenic belt in eastern Europe. In: Eliopoulos, D.G. et al. (eds.): *Mineral exploration and sustainable development, Proceedings 7th biennial SGA meeting*, Athens, Greece, 24–28 August 2003, Millpress Rotterdam, 407–410.
- White, N.C., Leake, M.J., McCaughey, S.N. and Parris, B.W. (1995): Epithermal gold deposits of the south-west Pacific. *J. Geochem. Explor.* **54**, 87–136.
- Zimmerman, A., Stein, H., Markey, R., Fanger, L., Heinrich, C., von Quadt, A. and Peytcheva, I. (2003): Re–Os ages for the Elatsite Cu–Au deposit, Srednogorie zone, Bulgaria. In: Eliopoulos, D.G. et al. (eds.): *Mineral exploration and sustainable development, Proceedings 7th biennial SGA meeting*, Athens, Greece, 24–28 August 2003, Millpress Rotterdam, 1253–1256.

Received 21 November 2003

Accepted in revised form 12 July 2004

Editorial handling: A. von Quadt