

Zeitschrift: The Swiss observer : the journal of the Federation of Swiss Societies in the UK

Herausgeber: Federation of Swiss Societies in the United Kingdom

Band: - (1950)

Heft: 1140

Rubrik: Communiqué

Nutzungsbedingungen

Die ETH-Bibliothek ist die Anbieterin der digitalisierten Zeitschriften. Sie besitzt keine Urheberrechte an den Zeitschriften und ist nicht verantwortlich für deren Inhalte. Die Rechte liegen in der Regel bei den Herausgebern beziehungsweise den externen Rechteinhabern. [Siehe Rechtliche Hinweise.](#)

Conditions d'utilisation

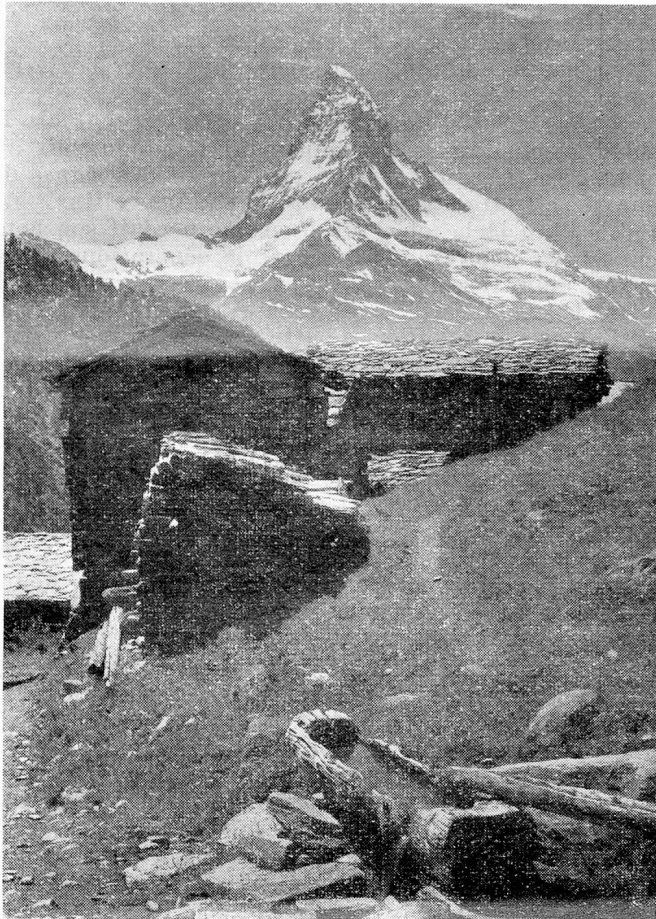
L'ETH Library est le fournisseur des revues numérisées. Elle ne détient aucun droit d'auteur sur les revues et n'est pas responsable de leur contenu. En règle générale, les droits sont détenus par les éditeurs ou les détenteurs de droits externes. [Voir Informations légales.](#)

Terms of use

The ETH Library is the provider of the digitised journals. It does not own any copyrights to the journals and is not responsible for their content. The rights usually lie with the publishers or the external rights holders. [See Legal notice.](#)

Download PDF: 18.03.2025

ETH-Bibliothek Zürich, E-Periodica, <https://www.e-periodica.ch>



AN ENGLISHMAN WITH A MICROPHONE ON THE MATTERHORN (14740 ft.).

The epic event of 1865, when Whimper made the first ascent of the Matterhorn is being repeated in a more up-to-date version by Mr. Lamb, an English mountaineer and great friend of Switzerland.

He has been commissioned by the French-Swiss Transmitter at Sottens (wave length 392,6) and the Swiss Short Wave Transmitter (wave length 48,66 and 31,46) to describe his thrilling experiences to English listeners all over the world. He will be supported by a B.B.C. reporter who is being specially sent out to

Switzerland to cover this event. They will be accompanied by guides, technicians and porters. During the ascent they will make a series of brief broadcasts.

The initial transmissions are announced for Saturday, the 5th of August, from 7.25 p.m. to 7.45 p.m. and from 10.35 p.m. to 10.40 p.m. They will take place from the Hoernli Hut. *On the following day, Sunday the 6th August*, the same reporter, making with his companions the final assault on the giant of Alps, will speak to the listeners from 7.20 a.m. to 7.40 a.m. then from 8.40 a.m. to 8.45 a.m., then at 9.55 a.m., 11.00 a.m., 12.00 a.m. and 1.00 p.m.

At that time he will have reached the summit of the Matterhorn, and will broadcast during a full twenty minutes. His commentary will be taken over by the whole Swiss Network and relayed to foreign transmitters. Finally, back at the Hoernli Hut, he will give his last broadcast, from about 9.00 p.m. to 9.15 p.m.

All these broadcasts will be made in French as well as in English. They will be transmitted by Short-Wave to the Hoernli Hut, from which they will be relayed to the various transmitters. On the other hand, a link-up by Short-Wave is proposed between the Reporting Van and the Commentator climbing the Matterhorn and — probably — with another Reporter circling the summit in a plane!

All this is enough to show how sensational — and delicate — will be this first attempt, unique in the annals of Alpinism and Radio, of a Broadcast of the ascent of the Matterhorn.

COMMUNIQUE.

Le Conseil fédéral a décidé de supprimer le Consulat de Suisse à Liverpool et fixé au 1er août 1950 la date officielle de fermeture.

La répartition de l'arrondissement consulaire a été arrêtée comme suit :

(a) *à la Légation de Suisse à Londres :*

Les comtés de Cornwall, Devon, Dorset, Gloucester, Hereford, Monmouth, Shropshire, Somerset, Stafford, Warwick, Wiltshire, Worcester, ainsi que la Principauté de Galles ;

(b) *au consulat de Suisse à Manchester :*

Les districts maritimes de Cheshire et de Lancashire, les comtés de Cumberland et de Westmoreland, ainsi que l'île de Man.

Telegrams and Cables : TRANCOSMOS LONDON.

Telephone : MAN. HOUSE 8383 (7 lines).

COSMOS FREIGHTWAYS AGENCY LIMITED.

INTERNATIONAL FREIGHT FORWARDERS

By Road, Rail Sea and Air

9/10, ST. MARY AT HILL, EASTCHEAP,
LONDON, E.C.3.

REGULAR GROUPAGE SERVICES WITH

SWITZERLAND

ANGLO-SWISS CUSTOMS EXPERTS.

Agents : WELTIFURRER INTERNATIONAL TRANSPORT CO. Ltd., Zurich, Basle, Buchs, Schaffhausen, Geneva, St. Gall.

ALSO AT
LIVERPOOL, MANCHESTER,
NEWCASTLE-ON-TYNE,
HULL, BRISTOL, CARDIFF,
SWANSEA, NEWPORT, Mon.
GLASGOW.

CONNECTED
THROUGHOUT
THE WORLD

OFFICIAL FREIGHT AND
PASSENGER AGENTS FOR
SWISSAIR AND ALL AIR LINES
TO SWITZERLAND AND ALL
PARTS OF THE WORLD.