

**Zeitschrift:** The Swiss observer : the journal of the Federation of Swiss Societies in the UK

**Herausgeber:** Federation of Swiss Societies in the United Kingdom

**Band:** - (1955)

**Heft:** 1249

**Rubrik:** Swiss Catholics in London

### **Nutzungsbedingungen**

Die ETH-Bibliothek ist die Anbieterin der digitalisierten Zeitschriften. Sie besitzt keine Urheberrechte an den Zeitschriften und ist nicht verantwortlich für deren Inhalte. Die Rechte liegen in der Regel bei den Herausgebern beziehungsweise den externen Rechteinhabern. [Siehe Rechtliche Hinweise.](#)

### **Conditions d'utilisation**

L'ETH Library est le fournisseur des revues numérisées. Elle ne détient aucun droit d'auteur sur les revues et n'est pas responsable de leur contenu. En règle générale, les droits sont détenus par les éditeurs ou les détenteurs de droits externes. [Voir Informations légales.](#)

### **Terms of use**

The ETH Library is the provider of the digitised journals. It does not own any copyrights to the journals and is not responsible for their content. The rights usually lie with the publishers or the external rights holders. [See Legal notice.](#)

**Download PDF:** 11.12.2024

**ETH-Bibliothek Zürich, E-Periodica, <https://www.e-periodica.ch>**

**PERSONAL.**

We deeply regret to announce the passing away, after a long and serious illness, of Madame Greta Thurnheer-de Toll, widow of Monsieur W. Thurnheer, Swiss Minister to the Court of St. James' from 1940-1944.

**MISCELLANEOUS ADVERTISEMENTS**

**ELSIE FINGER (THE SWISS) FLORIST.** 237, Junction Road, Tufnell Park, London, N.19, Tel. ARChway 3711. Daily until 7 p.m., Sunday 11 a.m. to 1 p.m. Flowers, Bouquets, Wreaths, Plants. All designs at short notice. Deliveries any distance. As a member of Interflora we telegraph flowers to all parts of the world.

**FREIGHT EXPRESS LIMITED**

SHIPOWNERS, BROKERS,  
CHARTERING AGENTS,  
FORWARDING, WHARFAGE

**11/12, FENCHURCH STREET, LONDON, E.C.3**

Phone: MANsion House 75617  
Telegrams: "Telcoport, Telex, London"

**Express Wharf, 38, Westferry Road, London, E.14**

Phone EAST 2422 3

**SWISS CHURCH.**

Every Sunday at 11 a.m.

SERVICE IN FRENCH at the Eglise Suisse, 79, Endell Street, Shaftesbury Avenue, W.C.2.

SERVICES IN GERMAN: Every Sunday at 11 a.m. and 6.30 p.m. at "St. Mary Woolnoth" Church, Lombard Street, Bank, E.C.3.

EVENING SERVICES, at 6.30, at the Eglise Suisse, 79, Endell Street, W.C.2. Fourth Sunday in the month, evening service at 6 p.m., in the French church, 9, Soho Square, W.1.

French speaking congregation:  
Pasteur C. Reverdin; Tel.: FIN 5281.

German speaking congregation:  
Pfarrer H. Spörri; Tel: MOU 6018.

**SWISS CATHOLICS IN LONDON.**

CHURCH and SERVICES: St. ANN's Catholic Church, Abbey Orchard Street (off Victoria St.) S.W.1.

SUNDAYS: Holy Masses at 8, 9, and 11 o'clock.

HOLIDAYS OF OBLIGATION: Holy Masses at 7.30, 9 a.m. and 5.45 p.m.

WEEKDAYS: Holy Mass at 7.30 a.m.

CONFESSIONS in German, Italian and French: EVERY SATURDAY:

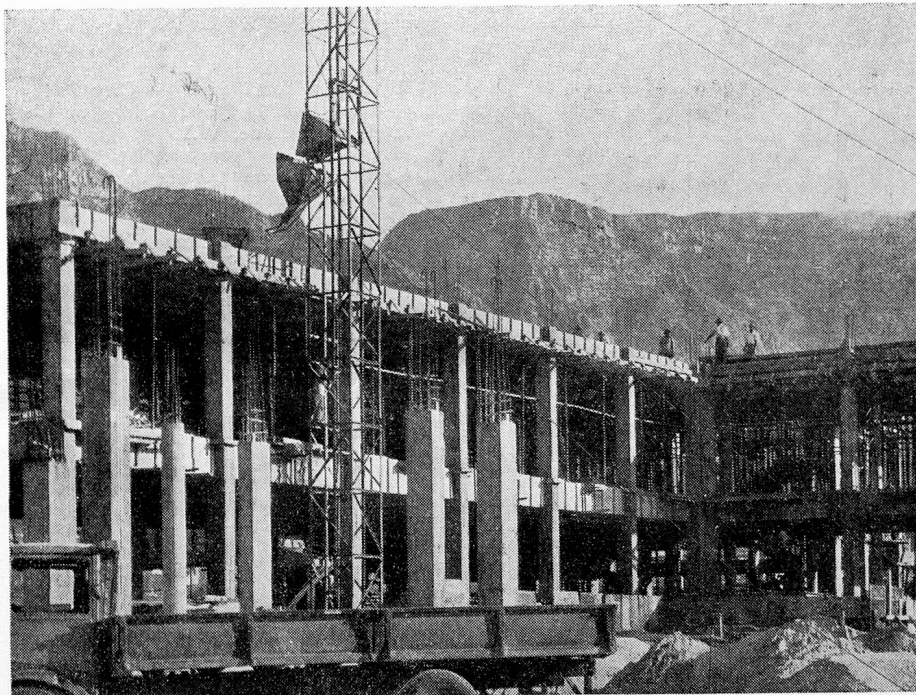
a) at St. Ann's from 11.30 a.m. — 12.45 p.m.

b) at Westminster Cathedral: from 5-6.30 p.m.

c) at any other time by appointment.

CHAPLAIN: Rev. A. Lanfranchi, St. Ann's Church, Abbey Orchard Street, S.W.1. Tel.: ABBey 2895.

**ACROW** *in South Africa*



The Acrow Organisation has many ramifications. Chief among them is the service it renders to building contractors in all parts of the world.

Against the impressive backcloth of Cape Town's famous Table Mountain, this new £500,000 building for South African Railways is being erected with the aid of Acrow Props, Floor-Centres and Steel Formwork.

ACROW (ENGINEERS) LTD.,  
South Wharf, Paddington, London, W.2  
AMBassador 3456 (20 lines)