

# Commercial news

Objektyp: **Group**

Zeitschrift: **The Swiss observer : the journal of the Federation of Swiss Societies in the UK**

Band (Jahr): - **(1960)**

Heft 1356

PDF erstellt am: **22.07.2024**

## **Nutzungsbedingungen**

Die ETH-Bibliothek ist Anbieterin der digitalisierten Zeitschriften. Sie besitzt keine Urheberrechte an den Inhalten der Zeitschriften. Die Rechte liegen in der Regel bei den Herausgebern.

Die auf der Plattform e-periodica veröffentlichten Dokumente stehen für nicht-kommerzielle Zwecke in Lehre und Forschung sowie für die private Nutzung frei zur Verfügung. Einzelne Dateien oder Ausdrucke aus diesem Angebot können zusammen mit diesen Nutzungsbedingungen und den korrekten Herkunftsbezeichnungen weitergegeben werden.

Das Veröffentlichen von Bildern in Print- und Online-Publikationen ist nur mit vorheriger Genehmigung der Rechteinhaber erlaubt. Die systematische Speicherung von Teilen des elektronischen Angebots auf anderen Servern bedarf ebenfalls des schriftlichen Einverständnisses der Rechteinhaber.

## **Haftungsausschluss**

Alle Angaben erfolgen ohne Gewähr für Vollständigkeit oder Richtigkeit. Es wird keine Haftung übernommen für Schäden durch die Verwendung von Informationen aus diesem Online-Angebot oder durch das Fehlen von Informationen. Dies gilt auch für Inhalte Dritter, die über dieses Angebot zugänglich sind.

## COMMERCIAL NEWS

### Swiss machine for Saudi Arabia.

A big gas turbine — one of the most powerful in the Middle East — is to be inaugurated by the Aramco, in 1961. This turbine will render possible a better utilisation of the resources in oil of Saudi Arabia. Manufactured in Switzerland by Sulzer Bros. in Winterthur, it will have a dimension of 19.4 yards by 8.3 yards and will be capable of developing a capacity of 14,500 HP. It will serve to run three compressors, which will be able to compress about 60 million cubic feet of gas, per day. These gases, either in a compressed or liquid form, will be re-injected into the oil-fields in order to preserve the pressure necessary for the extraction of a larger quantity of crude oil.

### Swiss delivery to Australia.

On the 13th November, 1959, the imposing Narrows Bridge, in Perth, Western Australia, was solemnly inaugurated and handed over for public use. This bridge which spans the Swan River is equipped with about fifty light-metal Light Standards, 33-39 feet high, which carry big fluorescent lamps. The powerful illumination gives the bridge a very special and highly modern look. These Light Standards (except for the electric parts) have been manufactured specially for the said bridge by the Swiss firm, Aluminium S.A., of Menziken.

### New radiotelephonic network for the police of Berne.

The police of the Canton of Berne have just become the possessors of a new radiotelephonic network, of a very modern conception and very high efficacy, which has been produced by the firm of "Autophone", of Soleure. In order to be able to cover the whole of the territory of this Canton, which is very extensive and possesses a markedly hilly terrain, it has been necessary to establish four relay stations, which are connected with the central station in Berne by 25.5 inches wavelengths. Each relay-station re-transmits the messages received to the police cars by means of 71 inches waves. Every car which is equipped with a radio telephone can receive the messages sent by the central station or communicate, via this station, with any other car, or with any other station on the network of the Swiss PTT, the central station always being able to take part in the conversation. More-

over, every car can receive the police information network and can talk directly with any other car or with the small portable police wireless sets. A still further possibility consists in each car being able to receive the broadcasts on the wave-lengths common to all the Swiss police. At present, this new network comprises 23 cars, but it can be extended to 90 cars. It will make better collaboration possible between the police forces belonging to the different Cantons, more especially in so far as the road police are concerned.

### Important Swiss remote control equipment at Vienna

For some time past, the Electricity Services of the city of Vienna (Austria) have had at their disposal a new remote control equipment for distribution network, which is the largest in Europe. It enables them to switch on or off, or to commute automatically, without any pilot wires, boilers, geysers and accumulative radiators, electricity meters, the lighting for shop-windows and staircases, etc. by means of a load distributor. The remote control receivers (relays) required for the operation of the various apparatuses are connected with the normal lines which supply the current and are activated by short alternating current impulses, of a higher frequency, which are transmitted in accordance with a code.

It is to the firm of Messrs. Sauter, of Basle, that the order was given for the delivery of the equipment in question. This firm has been well-known for the last fifty years for its contact clocks and time-switches, whilst its remote control equipment with electronic relays, has proved its worth during the past ten years, on a large number of European electricity networks.

### A Swiss technical adviser for the United Arab Republic.

A Swiss government officer, Mr. Robert Bornoz, who is an Inspector in the Financial Section of the General Direction of Posts, Telegraph and Telephones, in Berne, has just left for Syria, the Northern Province of the United Arab Republic. He will remain for some time in this country, in the capacity of a technical assistant at the United Nations and will proceed, at the request of the authorities, to re-organise the Accountant's Department of the Syrian General Post Office.

## M·A·T TRANSPORT LIMITED

FORMERLY MACHINERY & TECHNICAL TRANSPORT LIMITED

INTERNATIONAL SHIPPING & FORWARDING AGENTS

MURRAY HOUSE, BARBICAN, LONDON, E.C.1

Telephone: MONARCH 6040 (20 Lines)

Telex: LONDON 28404 - MACANTECH.

Telegrams: MACANTECH, TELEX, LONDON

### ALLIED HOUSES:

#### BASLE

M·A·T TRANSPORT A.G., Peter Merian Strasse 50  
PHONE: 351800. TELEX: BASLE 62216 - MATTRANS

#### ZURICH

M·A·T TRANSPORT A.G., London House, Bahnhofstrasse  
PHONE: 258994 TELEX: ZURICH 52458 - MATTRANS

**An exhibition of cinema in Zurich.**

An exhibition devoted to the cinematographical art has just been opened in Zurich, on the premises of the Arts and Crafts Museum; it will last until the end of April. It has been organised by the Association of Swiss Film Producers, to celebrate the twenty-five years of its existence, in collaboration with the Arts and Crafts Museum, which specialises in shows of this kind. The original character of this exhibition is constituted by the fact that, among other things, it shows the evolution of the cinema by means of the cinema itself, through the showing of films belonging to various periods and to various tendencies.

**The progress of television in Switzerland.**

Since the 1st of January, 1959, the number of subscribers to television, in Switzerland, has increased from 50,300 to 78,700 in round figures, thus going up by 28,400 new sets. The previous year, there had only been 18,930 subscribers. Thus, at the end of 1959, there was, on an average, one TV set per every 66 inhabitants. At this rate, it may be anticipated that the number of TV licence holders will have attained the figure of 100,000 in 1960.

Out of the 78,700 subscribers to television, about 72,600 are private persons and 6,000 are collective licence holders (restaurants, hospitals, sanatoria, etc.). There are 55,700 subscribers in German-speaking Switzerland, 17,000 in the French-speaking parts and nearly 6,000 in the Tessin.

**Peasant craftwork still thriving in Switzerland.**

Wood carving, which still brings in an appreciable income to the populations of certain mountainous regions in Switzerland, such as the Bernese Oberland, for example, is maintaining its position pretty well. According to the most recent statistics, it provides employment for 435 persons, of which number 200 are independent master-wood-carvers, 158 workmen and 40 workers who do the carving at home. Care is being taken to find new models, which are more adapted to the taste of the customers of today. But, certain of the classical souvenirs continue to be greatly appreciated, more particularly by the foreign visitors. Another rustic branch of craftsmanship which continues to exist in the Canton of Appenzell, is that of the cutting out of brass ornaments, which are intended principally for the decoration of the leather collars to which cow-bells are attached, and which are also used to decorate the herdmen's leather braces. It is

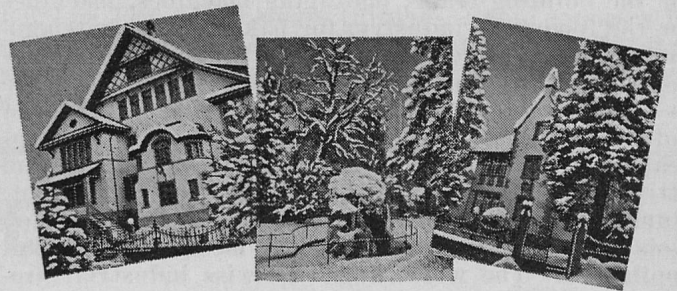
**“Home” for Swiss Nationals Living Abroad at Dürrenäsch in winter**

Aargau / Switzerland

The “Home,” “the little village” within the village



New Year's Eve celebrations, Silvesterfeier, in the cosy family circle of the “Home” community — Silvesterfeier 1959/60 im Kreise der gemütlichen „Home“-Familie.



**Auslandschweizer-“Home” in Dürrenäsch AARGAU SCHWEIZ in winter**

Das Auslandschweizer-“Home“-Dörfli im Dorf



Our traditional excursion to the Rigi-Kaltbad in the New Year of 1960 towards the beautiful winter sun was an unforgettable experience to the guests of our “Home”—Ein unvergessliches Heimat-Erlebnis für unsere “Home”—Gäste war der Neujahrsausflug 1960 an die herrliche Wintersonne auf Rigi-Kaltbad.

**«Home» for Swiss Nationals Living Abroad — a «pied-à-terre» in the homeland**

true, however, that this rustic art, which demands a great deal of taste, as well as skill, is now only being practised by a single craftsman, the heir to a tradition which has been preserved and fostered in the same family for 130 years.

#### Switzerland carries out a big order for Norway.

In the new Palace of the Norwegian Government — a building which is sixteen stories high — the premises have been covered with Swiss linoleum, from Giubiasco. 13,150 square yards cover the floors and 19,130 square yards the walls. As for the partitions used for dividing the rooms, the covering linoleum has been glued on to pre-fabricated parts.

#### INDUSTRIAL PRODUCTS AT THE SWISS INDUSTRIES FAIR 1960

The Swiss Industries Fair in Basle, which will take place for the 44th time from 23rd April to 3rd May 1960, emphasises each year in the number of exhibitors taking part the impressive growth of the various engineering industries in Switzerland, just as is happening in all other European countries as well.

Practically one-half of the entire exhibition area of something like 1,400,000 sq. ft. will be occupied by industrial groups, the largest of which are the *electrical industry* and the *machine-tool industry*. But there will also be an important display of machines for the building trade, packaging machines, machines for the foodstuffs industry, for bakeries and butchers' shops, for the hotel and catering trade and for large institutions, as well as office machines. To these are to be added the extensive group covering all kinds of industrial accessories with its affiliated special groups dealing with welding plant, workshop furniture and fittings, ventilation and air-conditioning plant, aluminium and non-ferrous metals, plastics, precision tools and measuring instruments, medical and dental appliances. The wide range of Swiss industrial production and the manner in which it keeps pace with modern progress is also made evident by the group covering methods of transport, with road vehicles and with special types of conveyors and plant for the mechanised handling of goods in factories.

Another branch of industry, if in a somewhat different sense, is represented by the *watchmaking industry* which makes prolific use of every kind of industrial improvements and always occupies a place of honour in Basle, forming a special fair of its own within the Fair.

### THE ANGLO-SWISS INSURANCE & REINSURANCE AGENCY LTD

29/30, High Holborn, London, W.C.1

Telephone: CHAncery 8554

draw the attention of merchants, forwarding agents and firms connected with Switzerland engaged in the import and export trades to the fact that the SCHWEIZ ALLGEMEINE VERSICHERUNGS-AKTIEN-GESELLSCHAFT, Zurich, have a British subsidiary company the **Switzerland General Insurance Co. (London) Ltd.**, offering the facilities of a first class British insurance company backed by the Swiss company and a world-wide agency organisation. Insurances can be effected at very competitive rates with personal service and advice given where required. We have special facilities for arranging insurances with this company and welcome enquiries.

There is nothing like

*Ovaltine*

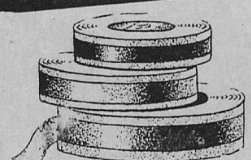
It stands  
in a class by  
itself



THERE'S VARIETY AND *Quality* IN  
**Panda RIBBONS**  
REGD

Everyone wants these wonderful ribbons manufactured by Selectus Limited. They are made in a host of traditional and fashion colours and in many qualities - plain and fancy, in Nylon, "Terylene" and Rayon. Ask for Panda and be sure of the best.

SELECTUS LIMITED · BIDDULPH, STOKE-ON-TRENT.



WHOLESALE  
AND SHIPPING

Telephone—Biddulph 3316-7  
Telegrams—Selectus, Stoke-on-Trent