

**Zeitschrift:** The Swiss observer : the journal of the Federation of Swiss Societies in the UK

**Herausgeber:** Federation of Swiss Societies in the United Kingdom

**Band:** - (1974)

**Heft:** 1685

**Rubrik:** News from the colony

### **Nutzungsbedingungen**

Die ETH-Bibliothek ist die Anbieterin der digitalisierten Zeitschriften. Sie besitzt keine Urheberrechte an den Zeitschriften und ist nicht verantwortlich für deren Inhalte. Die Rechte liegen in der Regel bei den Herausgebern beziehungsweise den externen Rechteinhabern. [Siehe Rechtliche Hinweise.](#)

### **Conditions d'utilisation**

L'ETH Library est le fournisseur des revues numérisées. Elle ne détient aucun droit d'auteur sur les revues et n'est pas responsable de leur contenu. En règle générale, les droits sont détenus par les éditeurs ou les détenteurs de droits externes. [Voir Informations légales.](#)

### **Terms of use**

The ETH Library is the provider of the digitised journals. It does not own any copyrights to the journals and is not responsible for their content. The rights usually lie with the publishers or the external rights holders. [See Legal notice.](#)

**Download PDF:** 30.01.2025

**ETH-Bibliothek Zürich, E-Periodica, <https://www.e-periodica.ch>**

# NEWS FROM THE COLONY

## SCHWEIZERBUND

The Schweizerbund held its most recent meeting on 26th April at the *Presscala Club* with a small, but familiar and gay attendance. The *Presscala Club* replaced the *Orpheus Club* which had served as venue to a great many Schweizerbund evenings in the past. We reported last March that the *Orpheus Club*, founded by Mr. John Albert Gluck, had closed and that the family interests were continued by his son, Mr. Albert John Gluck at the *Presscala Club* in Fleet Street.

This was indeed an ideal venue. We were offered an excellent and remarkably cheap meal accompanied by good white wine which contributed to the general merriment. The Embassy was represented by Mr. Reutlinger of the Commercial Section, and his wife. The President, Mr. Virgil Berti, announced that Mr. Fernand Delaloye, present, was celebrating his 87th birthday on that very day. A large square cake decorated with Swiss emblems in sugar coating, a marzipan champagne bottle and a marzipan cigar was offered to him by the Secretary, Mr. Jurg Schmid. Mr. Delaloye rose to pronounce a rambling address which greatly added to the gaiety of the evening. A sing-song got started over coffee and liqueur. Those with a limited repertoire had the fortunate help of the SNTO booklets of Swiss songs provided by Mr. Schmid.

Earlier in the evening, the Society had held its Annual General Meeting and re-elected its President. A suggestion was

made for a coach outing to a place of historical interest but this was not retained because the Club was really too small to justify the expense and risk of such outings. Another suggestion was that the Club should hold its next meeting at Bertorelli's in Charlotte Street. Another, which caused some arguments over its reasonableness, was to hold Schweizerbund meetings in the Swiss Church. Laughter greeted one proposal that members of the Club, preferably the ladies, should prepare the Dinner in the Church kitchen.

Subscriptions were kept at their previous level. It was reported that the club had at present 39 paid-up members.

P.M.B.

## PIERRE SAVOIE

It is with deep regret that we announce the death of a very great friend of our paper, *Mr. Pierre Savoie*, who was well known for his artistic activities in the Swiss Colony of London. Over the past two years, Mr. Savoie had kindly contributed illustrated articles on Swiss churches and abbeys for the *Swiss Observer*. We still have a few of these articles at hand.

Born in Porrentruy in 1890, Mr. Savoie was in his 84th year when he died in his Streatham home of a sudden heart attack. A few months before, he had undergone a hernia operation which his doctors told him usually proved fatal to persons of his age. Despite this, Mr. Savoie was still in vigorous spirits and intellectually alert. He treated us last March to lunch at an Indian Restaurant near his home, at which he lived with one of his sons, André, a bachelor civil engineer, and told me of his many experiences in this country and on the Flanders front during the first world war. Mr. Savoie was in his time an active member of several Swiss societies, including the Cercle Neuchatelois, and of the Swiss Church. The distance of driving all the way to Endell Street eventually induced him to attend a local Presbyterian Church, but he will be remembered by many of our elder parishioners.

Having received his education at the Cantonal School of Porrentruy, Mr. Savoie then studied at the Ecole Professionnelle in Geneva, where he spent most of his

youth. Then followed three years of training in land surveying in Zurich and two years of similar activities in Stuttgart. He came to this country at the beginning of 1914 for further studies in landscape architecture but his stay was cut short on his being called back in August of the same year for military duties at the outbreak of war. He served for two years as an NCO in mountain infantry. The year 1916 saw Mr. Savoie back in Britain, where he at once volunteered for service in the Rifle Brigade of the British Expeditionary Force in Flanders. He was wounded at Paschendale and consequently invalided out of the army in 1919.

A year later, Mr. Savoie joined Pathé Pictures as a title artist in the days when, in the absence of sound, the dialogue of screen stars had to be provided by sub-titles. For eight years, he held the position of Art Director of Pathé Film Studios in Wardour Street and was later put in charge of the Art Department of British Instructional Films Ltd, one of Pathé's subsidiary companies.

Eager to do his bit for his adopted country, Mr. Savoie served during the second world war as a Training and Incident Officer and Post Warden in Streatham.

After having worked in the film industry for 32 years, he left Associated British Pathé for freelance work in 1951. He concentrated mainly on illustrating science educational books and is the author of many illustrated wall charts for schools. Up to the time of his death, he was still receiving rights for the innumerable books thus illustrated, examples of which he showed us during a recent visit. He prepared a "Sketch Map Book of Bible Lands", a splendid book published by Hutton Educational Publications. He wrote several similar books in his later life. Although these works were in the main not published, they kept him active and played a great part in preserving his keenness and zest for life.

He lost his wife Yvonne, who came from the Jura Bernois, in 1962, and has since lived with his youngest son André. His other son, René, is a chartered accountant and has three children, which Mr. Savoie had the pleasure of seeing



## NEALE & WILKINSON LTD.

Member of the Constantine Group

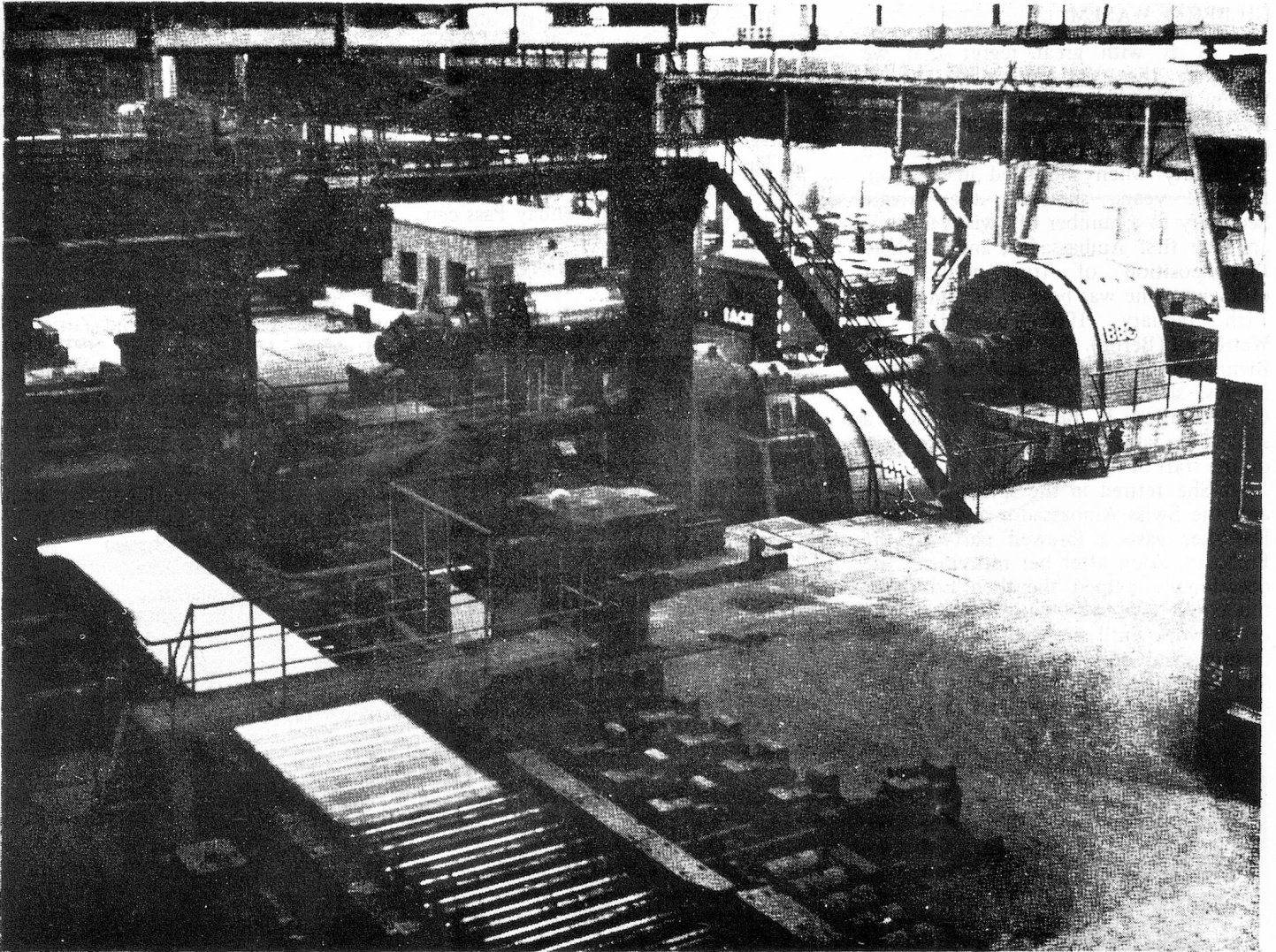
REGULAR ROAD SERVICE TO SWITZERLAND  
AND OTHER EUROPEAN COUNTRIES

78 BROADWAY, STRATFORD, LONDON E15 1NG  
TELEPHONE: 01-519 3232 Telex: 897666  
CABLES: 'EVERYWHERE' LONDON E15



Members of Eurovan

# BROWN BOVERI Partner of Industry



Two BROWN BOVERI 4600/11,400 H.P., 55/130 r.p.m. reversing drives installed in a steel mill.

International acceptance of BROWN BOVERI Drives can be gauged by their use in 200 cold and 150 hot rolling mills in the steel industry.

BROWN BOVERI drives are in current use in these

Industries:— **Metal Industries Paper**

**Cement Chemicals Traction Lifting & Conveying**

**Rubber, cellulose, plastics, foodstuffs, textiles, etc., etc.**

**BBC**  
BROWN BOVERI

**British Brown-Boveri Limited**

U.K. Head Office: Glen House, Stag Place, London SW1E 5AH

Telephone: 01-828 9422 Telex: 23448

Brentford Office: Albany House, 41 High Street, Brentford, Middlesex, TW8 0BH

Telephone: 01-568 7781 Telex: 934734

during family visits at weekends. Mr. Savoie was a living example of graceful old age. He knew how to enjoy his grandchildren, the countryside and to be helpful to his fellow men. We shall always keep a warm and grateful memory of a man who, despite a vast generation-gap, was a friend of this writer and the *Swiss Observer*.

P.M.B.

### GILBERTE WASEM

It is with great regret that we announce the death of Miss Gilberte Wasem, of Oaklands, 70 London Road, Hurst Green, Sussex. Many will remember her as a most charming and distinctive personality when she lived in London. For 32 years, she was the Private Secretary to a number of Swiss Ministers and the first Ambassador, and she held that position of trust with great efficiency. She was born at Delémont on 17th January, 1905, a citizen of Wattenwil (Berne). She went to school in Bienne and later in Berne. After a stay in Naples, she entered the service of the Confederation in Berne (BIGA) and a short time later came to London to serve on the staff of the then Legation.

She retired in the spring of 1962, and the Swiss Ambassador and Madame Daeniker gave a farewell party at the Embassy. Soon after her retirement, she occasionally helped the then Editor of the *Swiss Observer* with some of the office work until she went to live in the country and only rarely came to town. She devoted her time to her lovely little house and made her garden into a show

piece. She also continued to give time to music, a great hobby of hers.

She died on 3rd April, and we who knew her and loved her have lost a loyal friend whose memory will remain dear to us.

M.M.

### ALL-ROUND TRAIN TICKETS IN SWITZERLAND

The *Swiss Holiday Pass*, already described in these columns, was introduced on 1st March, 1972, by Swiss Transport Undertakings to enable visitors to travel across Switzerland at extremely advantageous conditions.

This scheme is only open to residents of countries other than Switzerland. The Swiss Holiday Pass can be bought at the main travel agencies, at branches of the Swiss National Tourist Office, at the Swiss Federal Railways enquiry offices at the stations of Basle, Berne, Geneva, Lausanne, Lucerne and Zurich, and at Geneva and Zurich Airport.

The Swiss Holiday Pass entitles the holder to unlimited travel on the principal rail, boat and postal coach routes shown on a special map attached to the pass, in addition to the purchase of unlimited numbers of reduced-rate tickets (reductions vary between 25 and 50 per cent) on lines indicated in a second map.

The passes are issued for the following periods of validity:

8 days: 100 Swiss francs in 2nd class, 140 francs in 1st. 15 days: 140 francs in 2nd class, 195 francs in 1st. 1

month: 195 francs in 2nd class, 275 francs in 1st.

Against payment of a supplement, the Swiss Holiday Pass may be used on TEE trains. It is thus of equal interest to tourists wanting to travel freely around as to visitors based in a holiday resort and wishing to see more of the country.

There is hardly a village in Switzerland which cannot be reached with the aid of this pass. It is valid on the whole network of the Federal Railways (1,810 miles), 79 private railways (1,414 miles), on boat routes (339 miles), on postal coach routes (2,054 miles), or 5,600 miles in all, not counting reductions offered on many funiculars and mountain railways such as those of the Jungfrauoch and the Gornergrat.

### SWISSAIR STARTS GLASGOW-ZURICH CARGO SERVICE

Swissair started a new all-cargo service between Glasgow and Zurich on 2nd May. It is operated by DC-9F freighters, four times weekly, leaving Glasgow Airport at 03.25 on Wednesday, Thursday, Friday and Saturday, and arriving in Zurich at 05.30.

The new cargo link between Scotland and Switzerland is being brought about by extending Swissair's existing Zurich-Manchester service northbound to Glasgow, but flying Glasgow-Zurich non-stop.

From Zurich, flights are scheduled to leave at 23.10 on Tuesday, Wednesday, Thursday and Friday and from Manchester at 01.55 the next day, arriving in Glasgow at 02.40. All UK times will be an hour earlier from 27th October.

The cargo capacity of Swissair's DC-9F is 14 tons or eight 108 inch pallets and two half pallets, or various combinations of 108 inch, 125 inch Jumbo pallets and half pallets.

In another scheme, four people travelling together can, for £49.20 each, fly this summer by Swissair from London to Basle or Geneva and back, and have the use of a car for up to 10 days. This is the starting price of Swissair's "Alpine Flydrive", one of four different types of motoring holidays featured in the airline's new brochure. All include return air travel from London or Manchester.

### BIRTHDAYS

The following readers will be celebrating birthdays within the next few weeks:

Mr. E. Gysin (Basle) will be 84 on 9th June. Miss R. Preiswerk (Basle) will be 69 on 11th June, and Dr. L. Guisan (Lausanne), President of the Organisation of the Swiss Abroad, 63 on 12th of the month.

Mrs. B. Dreux (Basle) will have her 60th birthday on 23rd and Mr. L. S. R. Asch his 66th on 24th June.

Mr. M. Schneider, also from Basle, will be 69 on 26th June and Mr. P. Bucher 74 on 27th of the month.



### TRAVEL WEEKLY TO AND FROM SWITZERLAND AND ENGLAND

Providing DOOR TO DOOR SERVICES with vans specially equipped to carry

- Household Removals
- Exhibition Goods
- Works of Art
- Machinery

For full information contact

#### In Switzerland

KEHRLI + OELER LTD.,  
3001 Berne,  
Bubenberplatz 9  
Tel: 031 22 00 22  
Telex: 32414 Kerolch

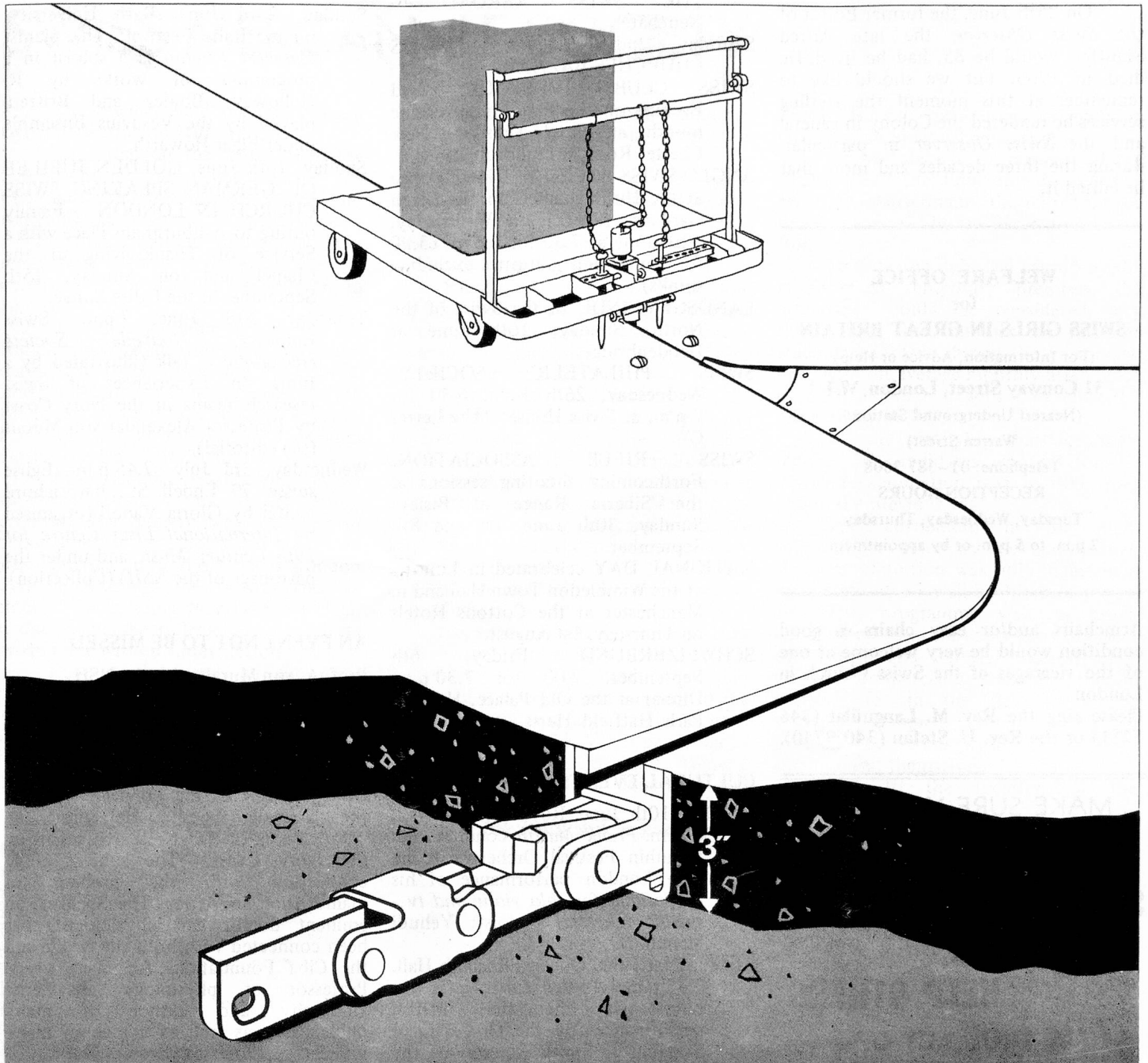
#### In England

all Eurovan Members



**EUROVAN**

# The Acrow Switchcart system



## Accountant's eye view

One answer to the problem of rising costs in warehousing, production distribution and freight handling lies just 3 inches below the surface; it's the Acrow Switchcart System.

Economical to install in old buildings or new because construction only requires penetration four inches below the floor surface, the System gives reduced operating costs and improved handling per man hour.

Programmed carts (which each carry loads from 200 lbs to 3 tons of material) switch automatically from the main line to spurs where they stop at their pre-determined destinations. In itself this self-directing of

carts helps ensure a smooth continuous flow of materials.


Proven throughout the world, acknowledged as the leader in its field, the Acrow Switchcart System is simple, dependable, versatile and capable of working round the clock.

If you would like further details—with an approximate costing of an installation for your company's requirements, ask your nearest Acrow branch. Ask, too, for proof of the savings which can be achieved and the speed with which you will recoup your capital invested.

### Branches:

BELFAST Belfast 665282 · BIRMINGHAM Walsall 33121-33122  
BRISTOL Bristol 655244 · CANTERBURY Canterbury 66707/64946  
CARDIFF Penarth 708689 · CHESTERFIELD Chesterfield 51146  
EAST ANGLIA Saffron Walden 22444 · GLASGOW 041-776 2328  
KIDDERMINSTER Kidderminster 61937 · LEEDS Leeds 716514  
LEICESTER Market Harborough 2295 · LIVERPOOL 051-525 7335  
MANCHESTER 061-480 5215/6/7 · NEWCASTLE Newcastle  
86-9493 · NORTH-EAST LONDON 01-599 5134  
NORTH-WEST LONDON Harefield 2411 · SOUTH-EAST LONDON  
01-858 3191/2 · SOUTH-WEST LONDON Epsom 27551  
SOUTHAMPTON Locks Heath 5221

**Acrow (Automation) Limited** Moorhall Road, Harefield,  
UB9 6PA, Middlesex. Tel.: Harefield 2411. Telex: 22851

**ACROW**   
THE QUEEN'S AWARD TO  
INDUSTRY 1975 TO  
ACROW ENGINEERS LIMITED

PEOPLE WORK WITH ACROW SYSTEMS

Congratulations and best wishes, also to any other readers whose birthdays happen to be within the next few weeks.

On 25th June, the former Editor of the *Swiss Observer*, the late Alfred Stauffer, would be 85, had he lived. He died in 1965, but we should like to remember at this moment the sterling services he rendered the Colony in general and the *Swiss Observer* in particular, during the three decades and more that he edited it.

#### WELFARE OFFICE

for

#### SWISS GIRLS IN GREAT BRITAIN

(For Information, Advice or Help)

31 Conway Street, London, W.1

(Nearest Underground Station:

Warren Street)

Telephone: 01-387 3608

RECEPTION HOURS

Tuesday, Wednesday, Thursday

2 p.m. to 5 p.m. or by appointment

Armchairs and/or easy chairs in good condition would be very welcome at one of the vicarages of the Swiss Church in London.

Please ring the Rev. M. Languillat (346 5281) or the Rev. U. Stefan (340 9740).

MAKE SURE YOU JOIN  
**THE SOLIDARITY FUND**  
OF THE SWISS ABROAD.

**SAVE,  
INSURE,  
HELP OTHERS**

**A TRUE ACT OF  
SOLIDARITY**

Please apply to Embassy and  
Consulates.

#### FORTHCOMING EVENTS:

22nd to 25th August – ASSEMBLY OF THE SWISS ABROAD – Neuchâtel.

Saturday, 2nd November – SWISS CHURCHES BAZAAR.

SWISS CLUB LIVERPOOL: Card Evening on the first Friday of the month at Hotel Dresden, New Chester Road, Bromborough.

ANGLO-SWISS SOCIETY: Dinner Dance at the Hurlingham Club (Ranelagh Gardens, S.W.6.) on Wednesday, 12th June at 7.30 for 8 p.m. £3.90 for dinner and gratuities excluding drinks).

LANDSGEMEINDE of the Swiss of the North, Sunday, 16th June at Hebdenbridge.

SWISS PHILATELIC SOCIETY: Wednesday, 26th June, 6.30 for 7 p.m. at Swiss House: "The Letter C"

SWISS RIFLE ASSOCIATION: Forthcoming shooting sessions at the Siberia Range at Bisley: Sunday, 30th June, 1st and 8th September.

NATIONAL DAY celebrated in London at the Wimbledon Town Hall and in Manchester at the Cottons Hotels on Thursday, 1st August.

SCHWEIZERBUND: Friday, 6th September, 7.00 for 7.30 p.m. Dinner at the Old Palace, Hatfield Park, Hatfield, Herts.

#### CULTURAL EVENTS

Monday, 10th June, Royal Festival Hall, 8 p.m. *Frank Martin* conducts the Menuhin Festival Orchestra in the first London performance of his *Polyptique for solo violin and two small orchestras* (soloist: Yehudi Menuhin).

Friday, 21st June, Queen Elizabeth Hall, 7.45 p.m. *Andrej Lutschg* is the soloist in the first British performance (by the Orchestra of St. John's, Smith Square) of the Violin Concerto by *Vladimir Vogel*.

Saturday, 22nd June, Assembly Rooms, Bath, 8 p.m. Bath Festival: *The Lucerne Piano Trio* (Albor Rosenfeld, *Markus Nyikos*, *Grazia*

*Wendling*) play works by Beethoven, *Frank Martin* and Schubert.

Sunday, 23rd June, Bath University, 6 p.m. Bath Festival: The pianist *Margaret Kitchin* is a soloist in a programme of works by R. Holloway, Boulez and Britten, played by the Vesuvius Ensemble under Elgar Howarth.

Sunday, 16th June, GOLDEN JUBILEE OF GERMAN SPEAKING SWISS CHURCH IN LONDON – Family outing to Ashburnham Place with a Service of Thanksgiving at the Chapel and on Sunday, 15th September at the Eglise Suisse.

Thursday, 20th June, 7 p.m., Swiss Embassy, *Nouvelle Société Helvétique* – talk (illustrated by a film) on Experiences of Swiss research teams in the Ivory Coast by Professor Alexander von Muralt (see editorial).

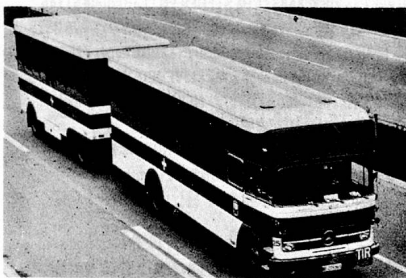
Wednesday, 3rd July, 7.45 p.m., Eglise suisse 79 Endell St., harpsichord recital by Gloria Vanoli (organised by *International Liszt Centre for 19th Century Music* and under the patronage of the NSH) (Collection).

#### AN EVENT NOT TO BE MISSED

##### Prof. A. von Muralt with the NSH

On Thursday, 20th June, the Swiss community in London will have a unique opportunity of hearing Prof. Alexander von Muralt. He will address the Open Meeting of the London Group of the Nouvelle Société Helvétique on "experiences of Swiss research teams on the Ivory Coast". The subject is in connection with the problem of malnutrition in Africa. The Speaker, an eminent doctor and physiologist, has been connected with both the Nestlé and the Ciba Foundations for many years. Professor of physiology at Berne University and author of many publications as well as a man of many interests, Professor von Muralt is extremely well qualified to speak on the vital work Switzerland had been doing as part of her contribution to international

**Continued on page 18**



#### TRAVEL WEEKLY TO AND FROM SWITZERLAND AND ENGLAND

Providing DOOR TO DOOR SERVICES with vans specially equipped to carry

- Household Removals.
- Exhibition Goods.
- Works of Art. – Machinery.

For full information contact

In Switzerland FRITZ KIPFER, Statthalterstr. 101, 3018 Berne. Tel: 031/55 50 55. Telex: 32693  
In England LEP PACKING LTD. Corney Road, Chiswick, London W.4. Tel: 01-995 1300 (Ext. 110) Telex: 23944

