

Zeitschrift: Swiss express : the Swiss Railways Society journal
Herausgeber: Swiss Railways Society
Band: 4 (1994-1996)
Heft: 10

Artikel: The new locomotive depot at Basel
Autor: Dunster, Geoffrey / Pike, Alan
DOI: <https://doi.org/10.5169/seals-855091>

Nutzungsbedingungen

Die ETH-Bibliothek ist die Anbieterin der digitalisierten Zeitschriften. Sie besitzt keine Urheberrechte an den Zeitschriften und ist nicht verantwortlich für deren Inhalte. Die Rechte liegen in der Regel bei den Herausgebern beziehungsweise den externen Rechteinhabern. [Siehe Rechtliche Hinweise.](#)

Conditions d'utilisation

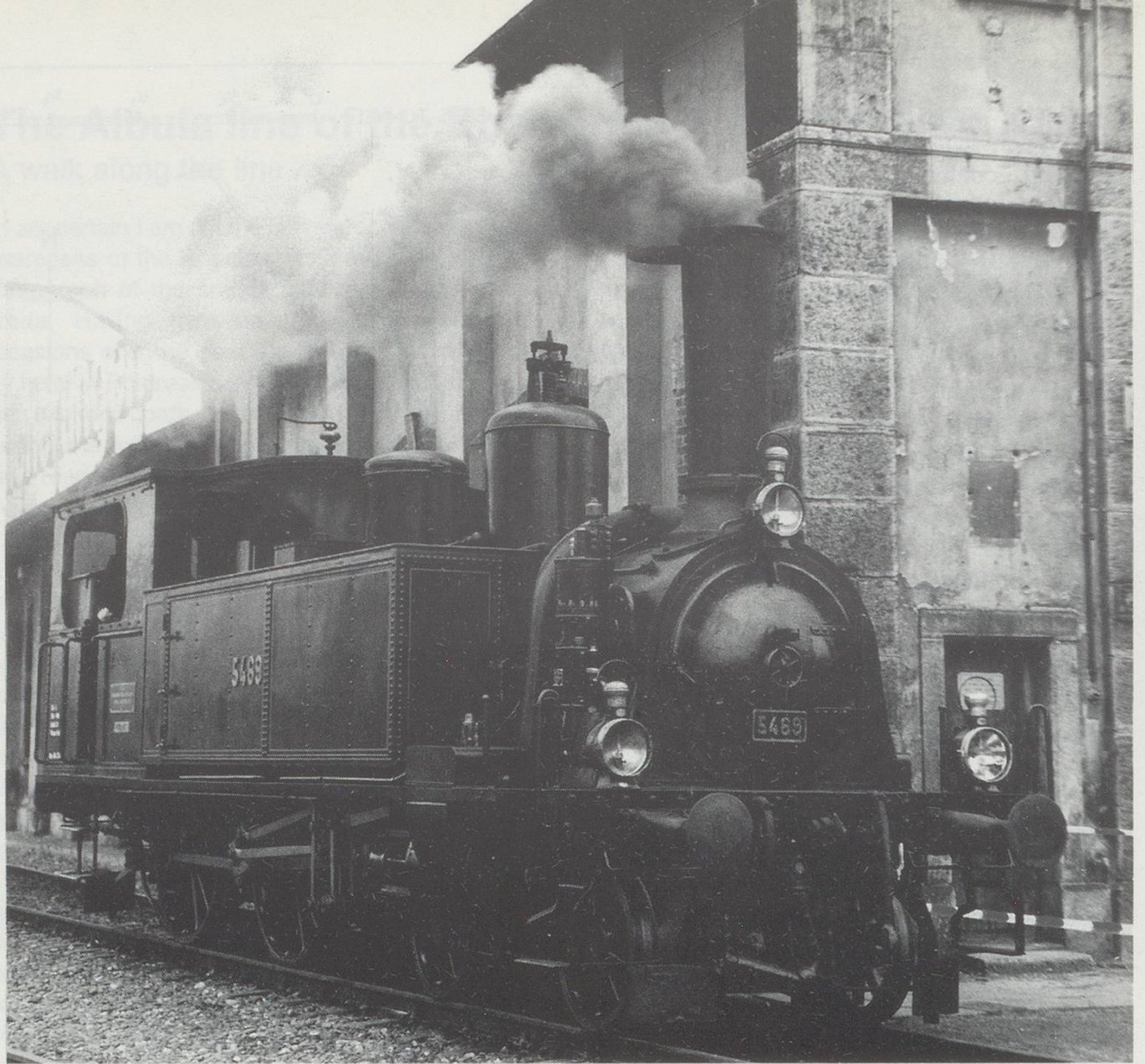
L'ETH Library est le fournisseur des revues numérisées. Elle ne détient aucun droit d'auteur sur les revues et n'est pas responsable de leur contenu. En règle générale, les droits sont détenus par les éditeurs ou les détenteurs de droits externes. [Voir Informations légales.](#)

Terms of use

The ETH Library is the provider of the digitised journals. It does not own any copyrights to the journals and is not responsible for their content. The rights usually lie with the publishers or the external rights holders. [See Legal notice.](#)

Download PDF: 06.02.2025

ETH-Bibliothek Zürich, E-Periodica, <https://www.e-periodica.ch>



The New Locomotive Depot at Basel

by Geoffrey Dunster & Alan Pike OBE, photos by Geoffrey Dunster

No longer will the traveller leaving Basel for Bern or Zurich look out of the window as the train pulls out of the Hauptbahnhof to see what is on 'shed'. Moreover, the inquisitive pedestrian can no longer walk down the nearby road and peer over the wall at the line-up. The old depot with its elegant buildings, turntable and traverser has gone.

The old SBB Locomotive Depot was closed in December 1995 when a brand new Depot 2000 was officially declared open on 5th December 1995 at Guterbahnhof Wolf, this being ½ a mile south of Basel SBB Station. A new PTT complex will be built on the old site.

On Saturday the 9th & Sunday 10th December 1995 the SBB opened to the public the old and new Depots where there was a shuttle service

with a two coach NPZ RBDe4/4 560 113-3 running between the SBB station and Depots, all of this was free of charge to the public.

A valedictory parade of motive power from years past, including two electrics from Germany, an E60 and an E94, was staged outside the old depot and associated workshops enclosed by a network of tracks, today's motive power was on display at the new depot.

The employees will doubtless welcome the spacious, light and clean working conditions. The depot, built as part of a wide range of developments in the Basel area for which planning goes back to 1981, has a greatly enhanced role in the repair and maintenance of both motive power and coaches.



Above: Ce6/8^I 14201, Ce6/8^{III} 14305, Ce6/8^{II} 14253, E94 279, E60 10, Ae3/6^{II} 10439. in front of the Old depot.
 Opposite page: Eb2/4 5469 next to the Old depot 10/12/95
 Below: Re460 019-3 with a CityNightLine coach, DB 103 238-2, Bm4/4 18435, in front of the New depot.

