

Zeitschrift: Swiss express : the Swiss Railways Society journal
Herausgeber: Swiss Railways Society
Band: 5 (1997-1999)
Heft: 2

Artikel: Verkershaus [i.e. Verkehrshaus] - Luzern new attractions
Autor: [s.n.]
DOI: <https://doi.org/10.5169/seals-854478>

Nutzungsbedingungen

Die ETH-Bibliothek ist die Anbieterin der digitalisierten Zeitschriften. Sie besitzt keine Urheberrechte an den Zeitschriften und ist nicht verantwortlich für deren Inhalte. Die Rechte liegen in der Regel bei den Herausgebern beziehungsweise den externen Rechteinhabern. [Siehe Rechtliche Hinweise.](#)

Conditions d'utilisation

L'ETH Library est le fournisseur des revues numérisées. Elle ne détient aucun droit d'auteur sur les revues et n'est pas responsable de leur contenu. En règle générale, les droits sont détenus par les éditeurs ou les détenteurs de droits externes. [Voir Informations légales.](#)

Terms of use

The ETH Library is the provider of the digitised journals. It does not own any copyrights to the journals and is not responsible for their content. The rights usually lie with the publishers or the external rights holders. [See Legal notice.](#)

Download PDF: 06.02.2025

ETH-Bibliothek Zürich, E-Periodica, <https://www.e-periodica.ch>



Verkershaus - Luzern new attractions

If you have not been to the museum in Luzern for a few years like me, you will be surprised by the new attractions, one of the newest is the ride (above) through the Gotthard tunnel during its construction, showing the conditions which the workers had to persevere to build the tunnel. Two Re460's and a new double deck coach on show at the museum.

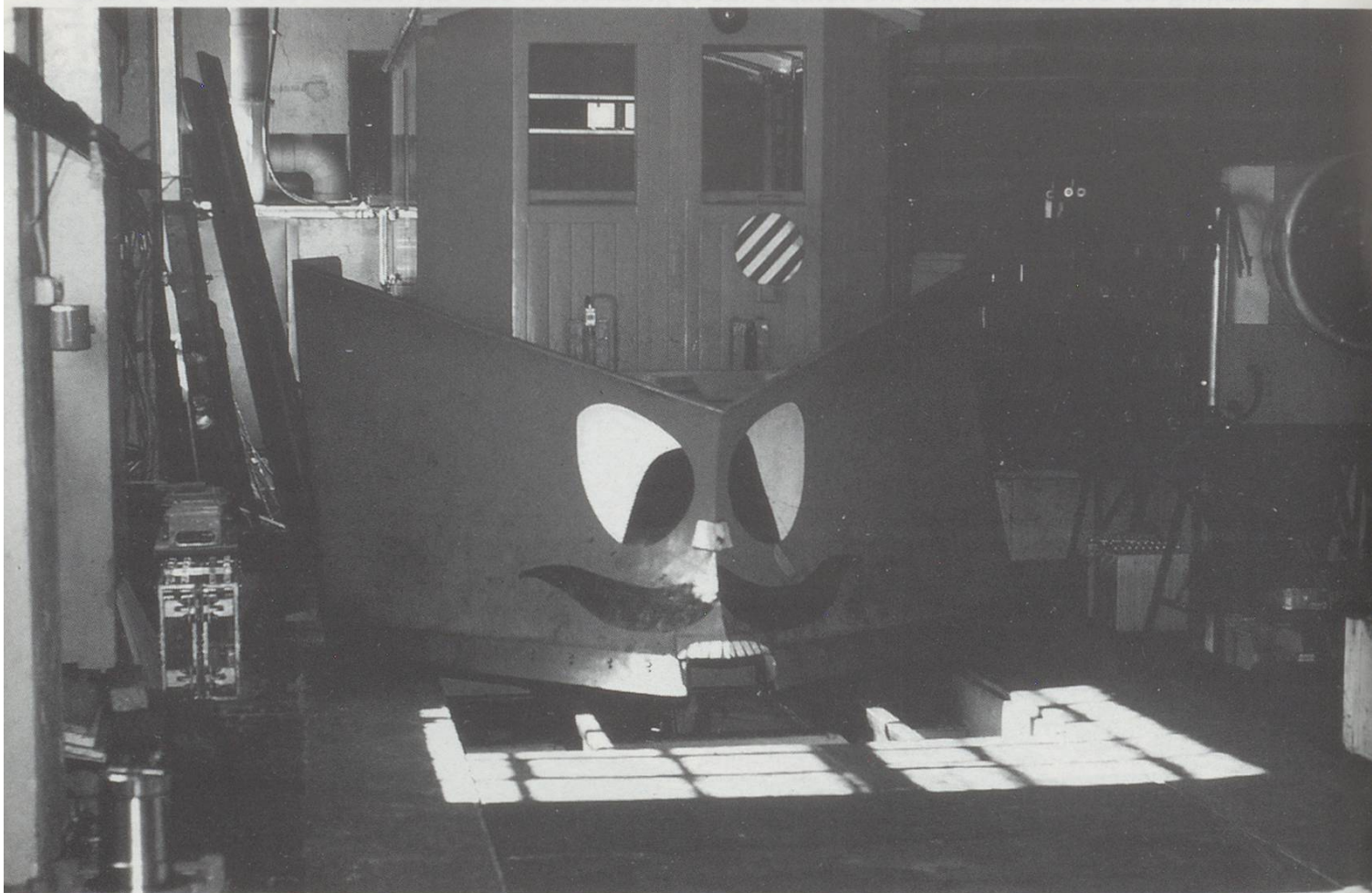


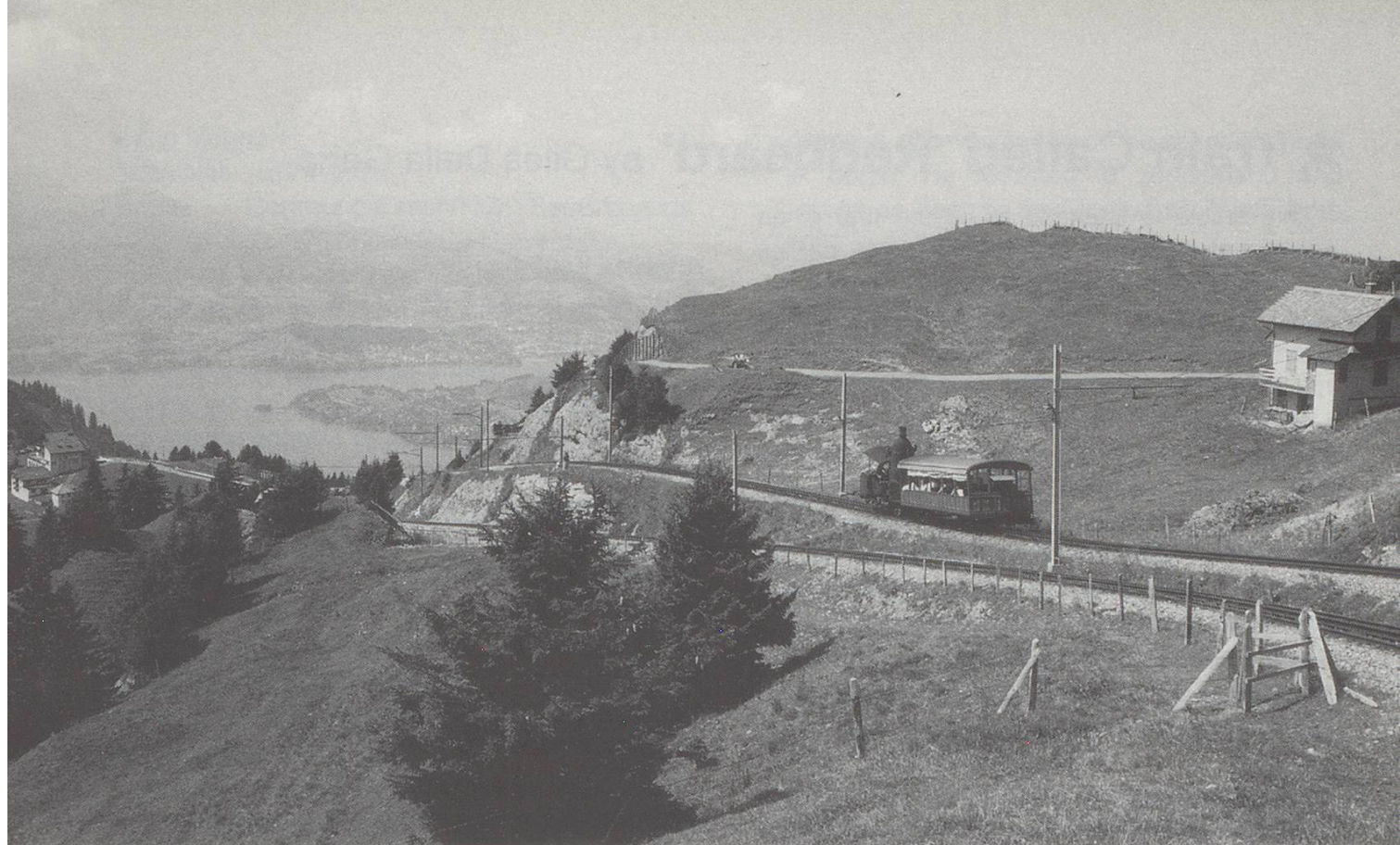


WINNERS OF THE AGM / Spring Meet Photo Competition at Carlisle, March 97.

Above: Bernina Pass & Lago Bianca from Diavalezzo, by David Arthur.

Below: An amusing snowplough caught in its shed by Bill Juergens





WINNER OF THE AGM / Spring Meet Photo Competition at Carlisle, March 97.

Above: No. 7 of the Vitznau-Rigi Bahn from Rigi Kulm, by Alan Pike OBE.

Below: Two more strange liveries on Re460's these being for a Swiss TV station.

