

Zeitschrift: Swiss express : the Swiss Railways Society journal
Herausgeber: Swiss Railways Society
Band: 5 (1997-1999)
Heft: 3

Artikel: Martigny-Chatelard & Emosson dam
Autor: Heath, Les
DOI: <https://doi.org/10.5169/seals-854496>

Nutzungsbedingungen

Die ETH-Bibliothek ist die Anbieterin der digitalisierten Zeitschriften. Sie besitzt keine Urheberrechte an den Zeitschriften und ist nicht verantwortlich für deren Inhalte. Die Rechte liegen in der Regel bei den Herausgebern beziehungsweise den externen Rechteinhabern. [Siehe Rechtliche Hinweise.](#)

Conditions d'utilisation

L'ETH Library est le fournisseur des revues numérisées. Elle ne détient aucun droit d'auteur sur les revues et n'est pas responsable de leur contenu. En règle générale, les droits sont détenus par les éditeurs ou les détenteurs de droits externes. [Voir Informations légales.](#)

Terms of use

The ETH Library is the provider of the digitised journals. It does not own any copyrights to the journals and is not responsible for their content. The rights usually lie with the publishers or the external rights holders. [See Legal notice.](#)

Download PDF: 30.01.2025

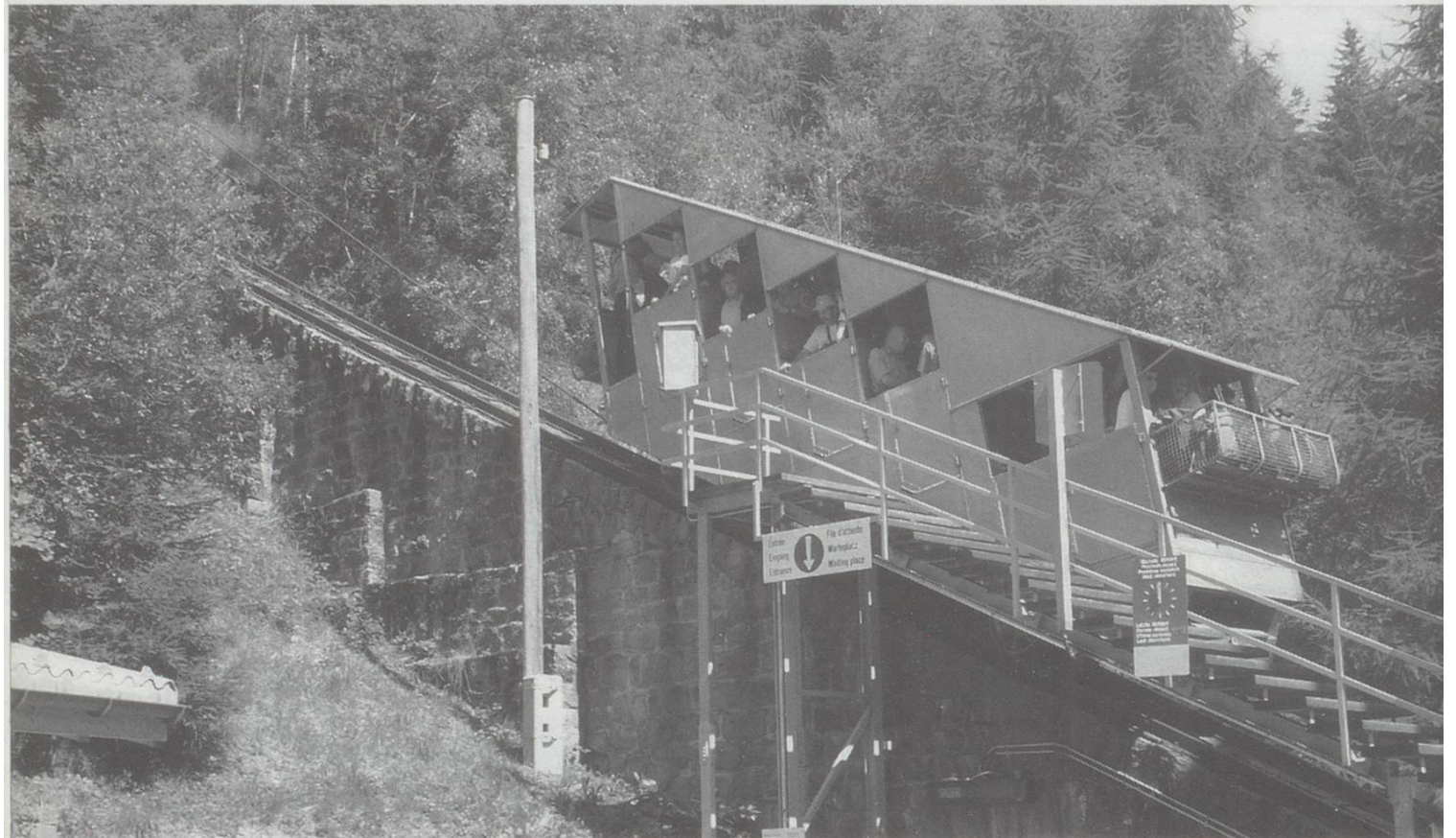
ETH-Bibliothek Zürich, E-Periodica, <https://www.e-periodica.ch>

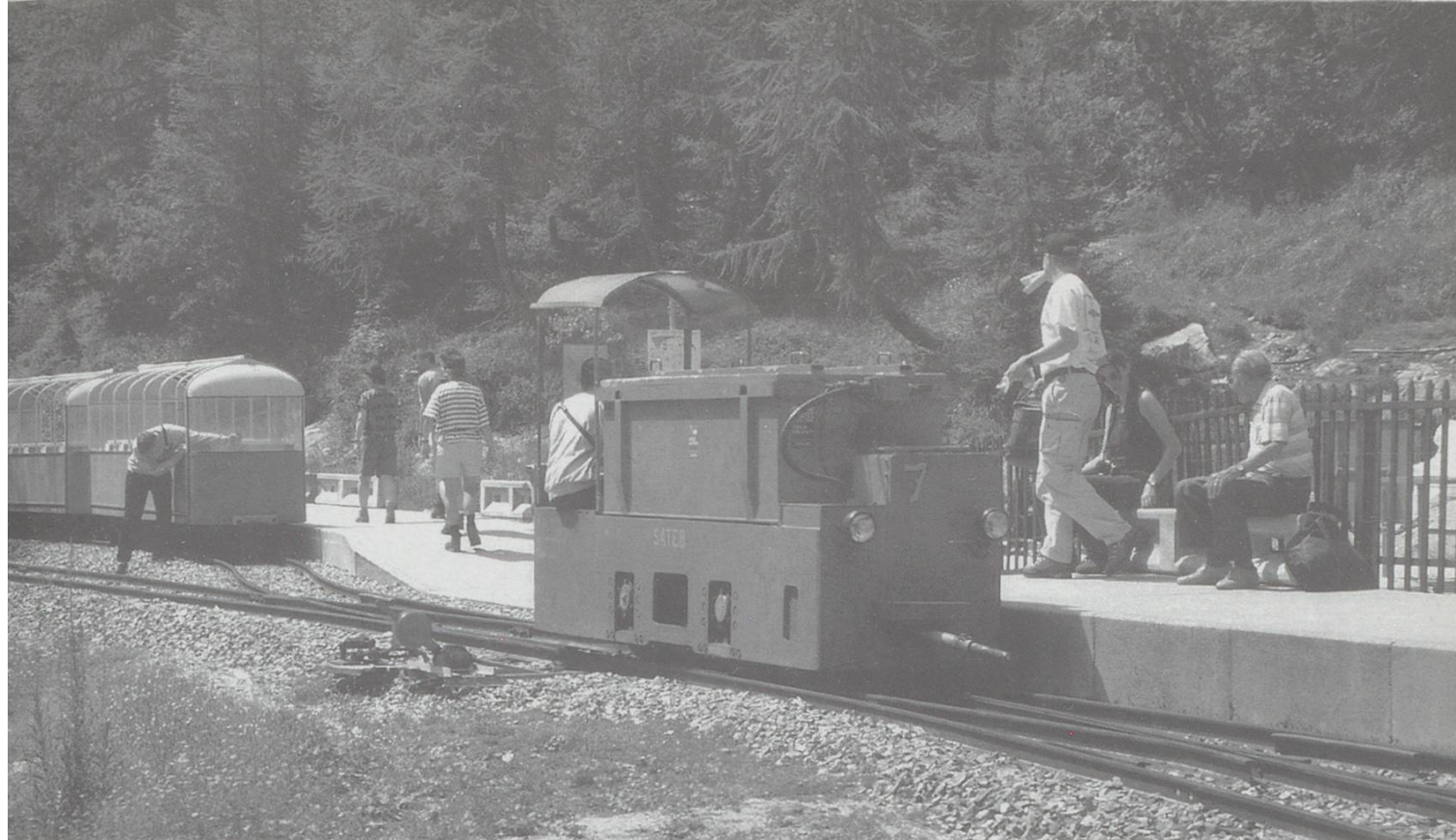


Martigny-Chatelard & Emosson Dam by Les Heath

On a recent trip to Switzerland we decided to try the new Mont-Blanc Express of the Martigny Chatelard Railway. These new units were delivered at the end of 1996, being owned by the Swiss and French railway companies. They run from Martigny through to Chamonix at the base of Mont Blanc.

The ride on these panoramic units is good with excellent views out of the large windows. There is some spectacular scenery. To help you there is a commentary in French, German and English, explaining where you are and what to look out for as you go.





We left the train at Chatelard and walked past the power station to the first funicular, which climbed at an incredible angle. This ride was about 15 minutes. We then walked to a small gauge (about 18in.) line that ran around the side of the mountain to the side of the dam. Here you ride in a new mini funicular (ten people max.) for the final climb to the top of the dam. There is a restaurant to sit and enjoy the views down the alley as well as over the top of the dam across to France and Mont Blanc. If you care to take a walk you can look at some fossilised dinosaur tracks. Photos: Author

