

**Zeitschrift:** Swiss express : the Swiss Railways Society journal  
**Herausgeber:** Swiss Railways Society  
**Band:** - (2006)  
**Heft:** [4]  
  
**Artikel:** The first electric railway in Switzerland?  
**Autor:** Rowbotham, Tony  
**DOI:** <https://doi.org/10.5169/seals-854813>

### **Nutzungsbedingungen**

Die ETH-Bibliothek ist die Anbieterin der digitalisierten Zeitschriften. Sie besitzt keine Urheberrechte an den Zeitschriften und ist nicht verantwortlich für deren Inhalte. Die Rechte liegen in der Regel bei den Herausgebern beziehungsweise den externen Rechteinhabern. [Siehe Rechtliche Hinweise.](#)

### **Conditions d'utilisation**

L'ETH Library est le fournisseur des revues numérisées. Elle ne détient aucun droit d'auteur sur les revues et n'est pas responsable de leur contenu. En règle générale, les droits sont détenus par les éditeurs ou les détenteurs de droits externes. [Voir Informations légales.](#)

### **Terms of use**

The ETH Library is the provider of the digitised journals. It does not own any copyrights to the journals and is not responsible for their content. The rights usually lie with the publishers or the external rights holders. [See Legal notice.](#)

**Download PDF:** 12.05.2025

**ETH-Bibliothek Zürich, E-Periodica, <https://www.e-periodica.ch>**



# THE FIRST ELECTRIC RAILWAY IN SWITZERLAND ?

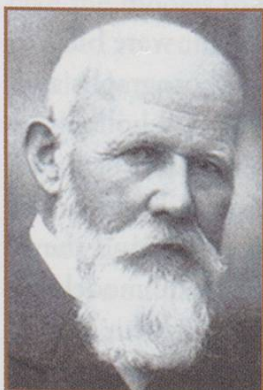
I came across this fascinating photograph in Volume 1 of the mammoth publication *Les Chemins de Fer Suisses après un Siècle 1847-1947*. It shows what is claimed to be the first electric railway in Switzerland. The line was installed in Territet near Montreux in 1884 and led up to a hotel in the resort. The rack appears to be the Riggerbach system. It is not clear how the electric current was picked up, so perhaps it was battery operated. However it is claimed that it featured regenerative braking when moving down the 1 in 33 slope. It was able to carry four people on each trip.

Standing to the left of the vehicle is Ami Chessex, the hotel owner and presumably the instigator of the project. Perhaps more importantly, standing on the vehicle is René Thury, the distinguished engineer who was the designer. At the time he worked for a company in Geneva, Meuron and Cuénod, which later developed into the Sécheron company - one of the leading Swiss locomotive manufacturers. As well as being involved in traction matters René looked into the possibility of distributing electric power nationally using a d.c. grid system rather than the usual a.c. three-phase system. Today the d.c. grid system is used in special situations such as the UK –

France link by submarine cable under the Channel.

*Réne Thury (1860 –1938).*

Editor's Note: Does anyone know of an earlier electrified line in Switzerland?



*The experimental line at Territet with fascinated spectators*

*One of M. Thury's 'High Voltage' locomotives for a later French line.*

