

Zeitschrift: Werk, Bauen + Wohnen
Herausgeber: Bund Schweizer Architekten
Band: 81 (1994)
Heft: 3: Drei Fragen an Architekten = Trois questions aux architectes = Three questions to architects

Artikel: Charles Gwathmey, Robert Siegel : New York
Autor: Gwathmey, Charles / Siegel, Robert
DOI: <https://doi.org/10.5169/seals-61521>

Nutzungsbedingungen

Die ETH-Bibliothek ist die Anbieterin der digitalisierten Zeitschriften. Sie besitzt keine Urheberrechte an den Zeitschriften und ist nicht verantwortlich für deren Inhalte. Die Rechte liegen in der Regel bei den Herausgebern beziehungsweise den externen Rechteinhabern. [Siehe Rechtliche Hinweise.](#)

Conditions d'utilisation

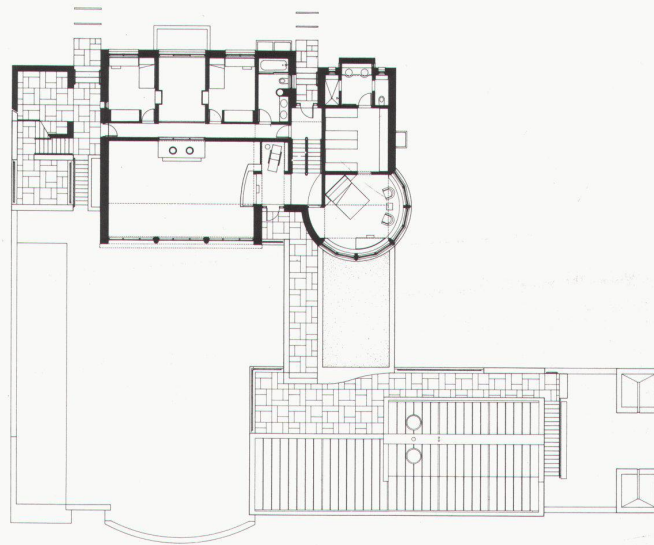
L'ETH Library est le fournisseur des revues numérisées. Elle ne détient aucun droit d'auteur sur les revues et n'est pas responsable de leur contenu. En règle générale, les droits sont détenus par les éditeurs ou les détenteurs de droits externes. [Voir Informations légales.](#)

Terms of use

The ETH Library is the provider of the digitised journals. It does not own any copyrights to the journals and is not responsible for their content. The rights usually lie with the publishers or the external rights holders. [See Legal notice.](#)

Download PDF: 15.03.2025

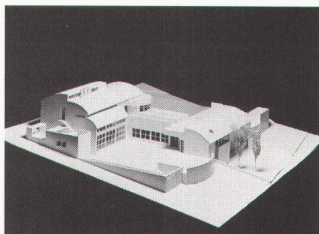
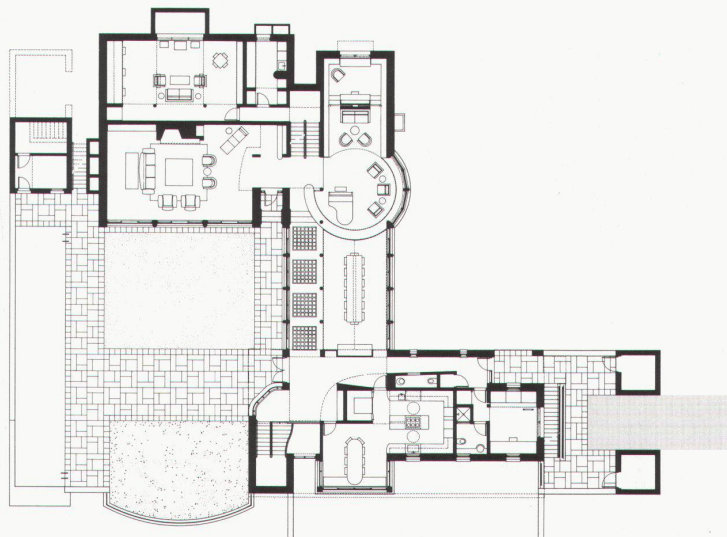
ETH-Bibliothek Zürich, E-Periodica, <https://www.e-periodica.ch>



Bechtler Residence, Zumikon, 1993
(mit Pfister + Schiess Architekten,
Zürich)

Obergeschoss

Erdgeschoss



■ The role of the architect should always be to question the norm or status quo through both theoretical and realized projects.

It is an obligation to understand the problem, the program and the constraints in order to exploit the design opportunities. This suggests that preconception and/or prejudgment may not promote the objective analysis, crucial to discovering the clues to clarification and thus the

possibility of reinterpretation and redefinition.

Research, to confirm the known, in order to rationalize repetition, is antithetical to invention. Research, to foster interrogation and alternatives, is a prerequisite to invention.

■■ The basis of our work is to order the composite problem, through analysis and intuition, into a holistic

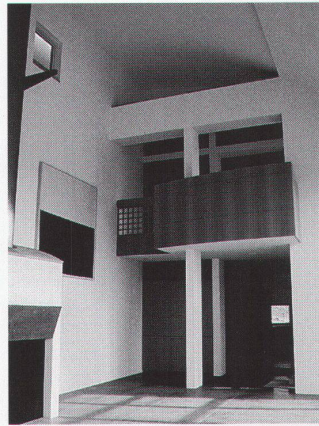
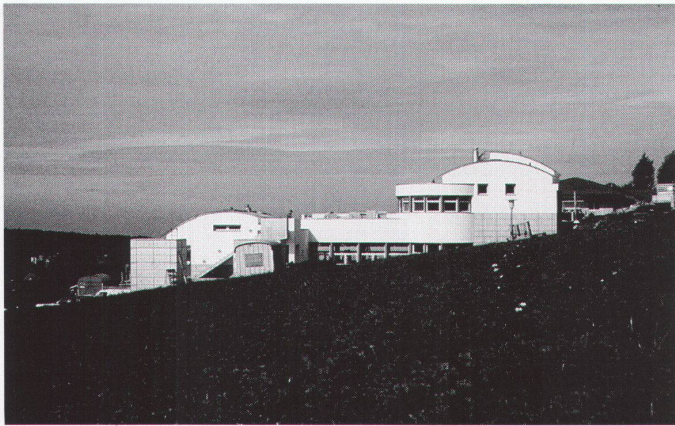
realization of formal resolution. We believe that the plan and section are simultaneous, and that form is an integral manifestation of their manipulation. We also believe that the site and the program are form determinants that are interlocked into the plan/section overlay.

Technology is both a potential aesthetic and theoretical factor in determining composition, form, materiality and space psychology. In our

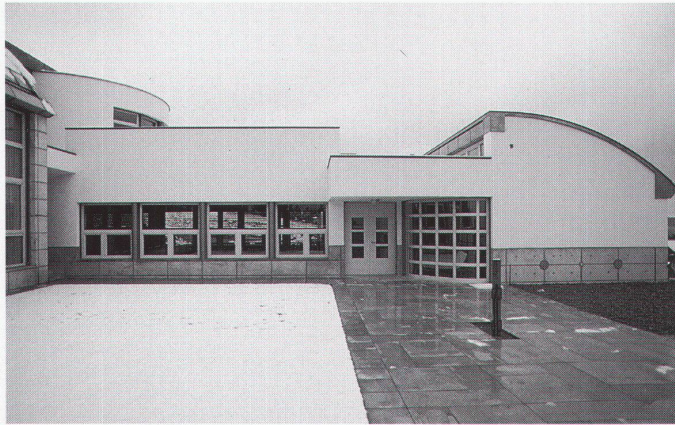
work, it is another factor in the formal equation, to establish appropriate priorities and hierarchies in the design resolution.

I believe all discussions are relevant and, again, obligatory. One cannot evaluate without knowledge, thus one must intellectually confront theoretical alternatives to both confirm or reevaluate your own relative position.

The eternal problem of archi-



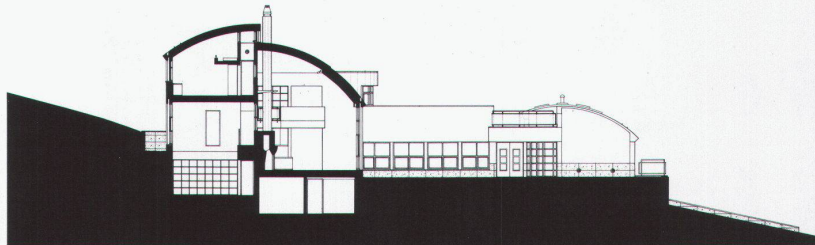
Ansicht von Osten
Wohn- und Essbereiche



Skulpturengarten

Schnitt durch Wohnraum und Skulpturengarten

Situation



ecture is that theory and realization are not equally simultaneous nor should they be mutually exclusive. Writing and drawing are different from building, in that they can be totally legitimate manifestations on their own terms, while that may not be as comprehensively possible in the reality of a building.

■■■ I object to the word "successful", because it is both subjective and

too broad to interpret. Our work is responsive, responsible and committed to formal realizations of order, hierarchy and provocation. It aspires to perceptual and psychological enrichment through experience and memory. It attempts to both speculate and resolve without rationalizing convenience or accommodation as justification, but as opportunity.

