

Zeitschrift: Anzeiger für schweizerische Altertumskunde : Neue Folge = Indicateur d'antiquités suisses : Nouvelle série

Herausgeber: Schweizerisches Landesmuseum

Band: 4 (1902-1903)

Anhang: Tafeln zu Heft 1-4

Autor: [s.n.]

Nutzungsbedingungen

Die ETH-Bibliothek ist die Anbieterin der digitalisierten Zeitschriften. Sie besitzt keine Urheberrechte an den Zeitschriften und ist nicht verantwortlich für deren Inhalte. Die Rechte liegen in der Regel bei den Herausgebern beziehungsweise den externen Rechteinhabern. [Siehe Rechtliche Hinweise.](#)

Conditions d'utilisation

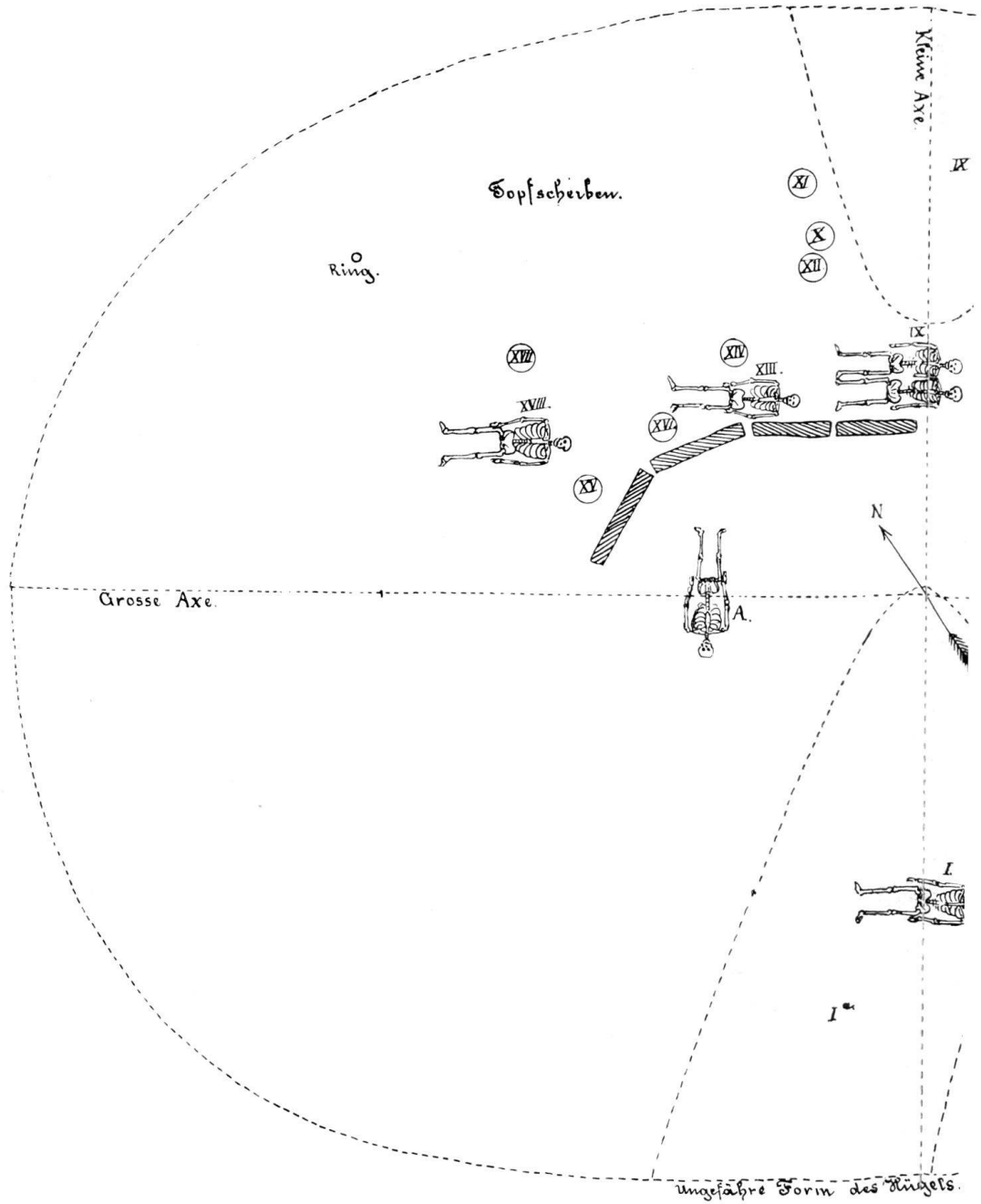
L'ETH Library est le fournisseur des revues numérisées. Elle ne détient aucun droit d'auteur sur les revues et n'est pas responsable de leur contenu. En règle générale, les droits sont détenus par les éditeurs ou les détenteurs de droits externes. [Voir Informations légales.](#)

Terms of use

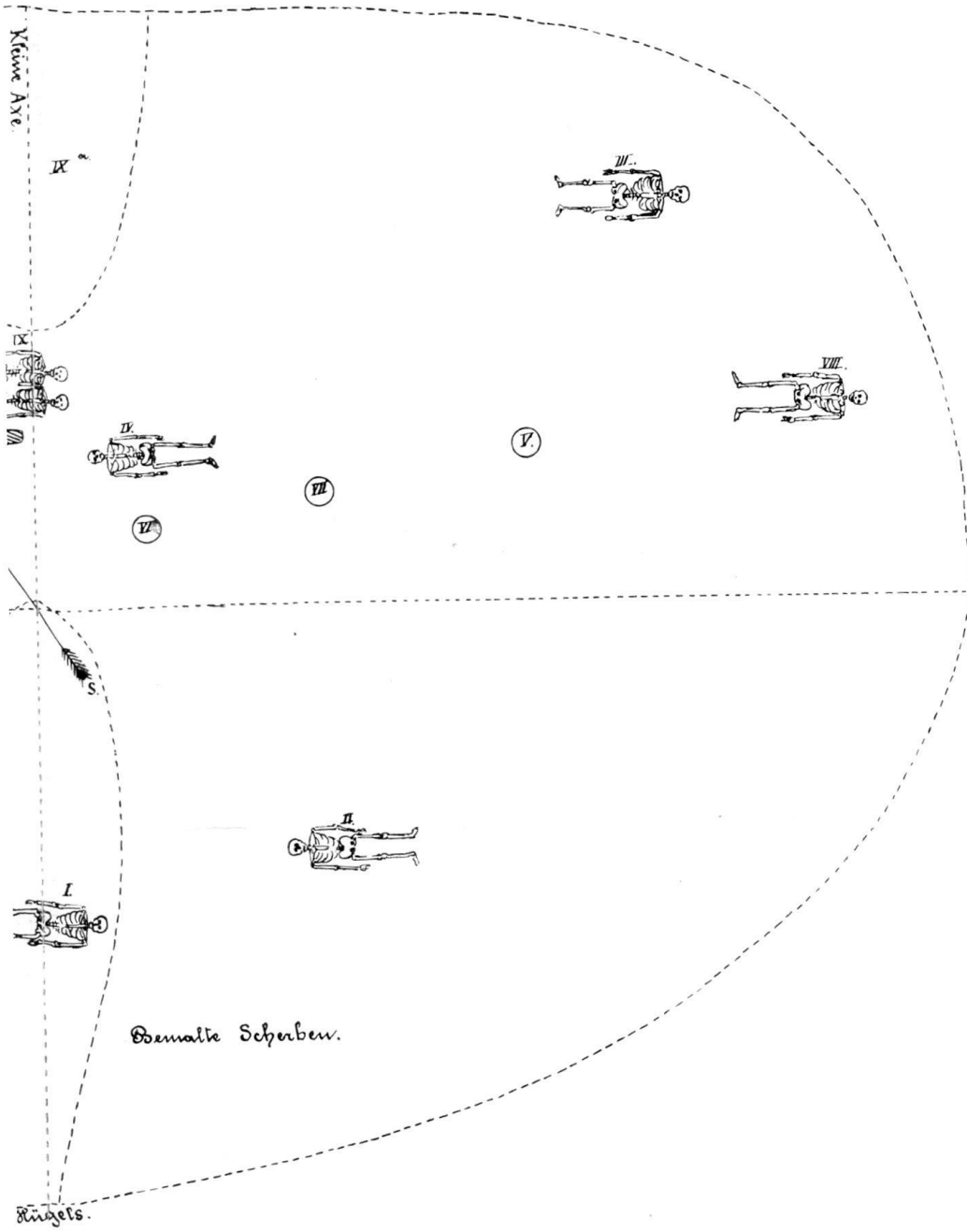
The ETH Library is the provider of the digitised journals. It does not own any copyrights to the journals and is not responsible for their content. The rights usually lie with the publishers or the external rights holders. [See Legal notice.](#)

Download PDF: 04.12.2024

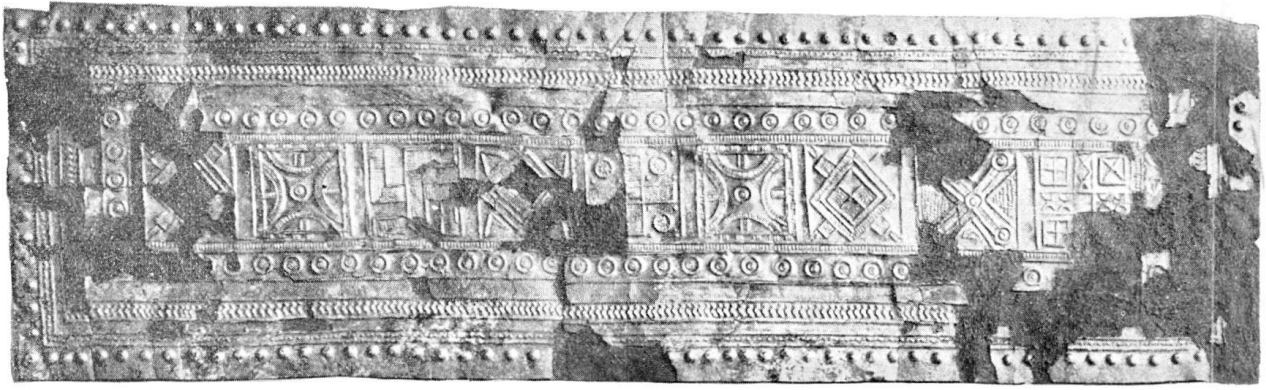
ETH-Bibliothek Zürich, E-Periodica, <https://www.e-periodica.ch>



Situationsplan des Grabhügels „Wieslistein“
 Masstab 1 :



tein“ bei Wangen (Dübendorf, Kt. Zürich).
ib 1 : 100.



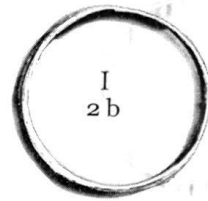
I, 1



I
2 a



I, 4



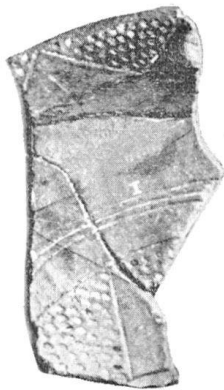
I
2 b



I, 3 a



I, 3 b



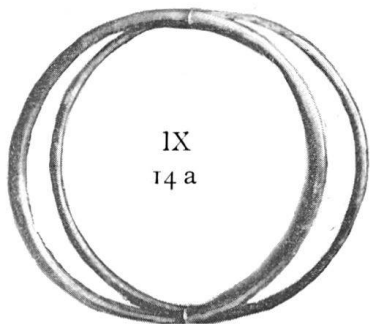
I, 7



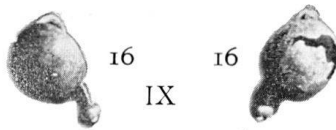
I, 6



I, 5



IX
14 a



16
IX



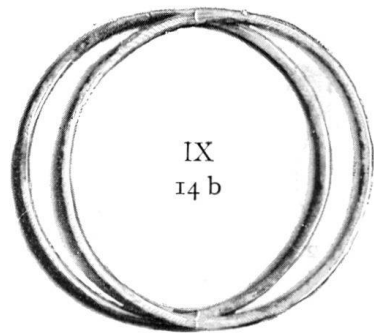
15 a



15

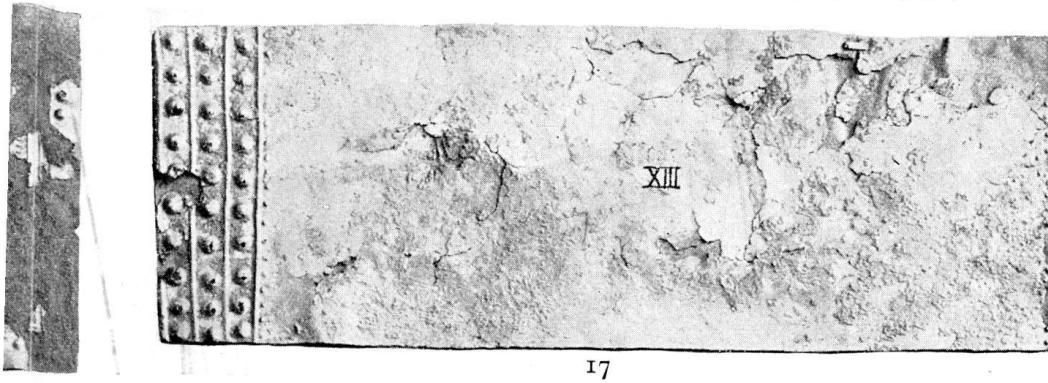


15 b

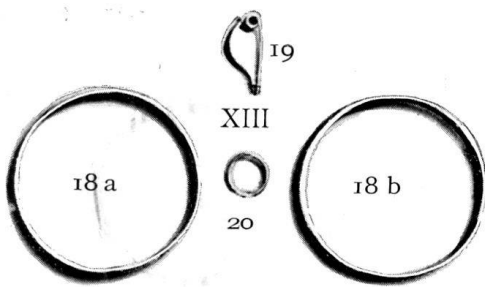


IX
14 b

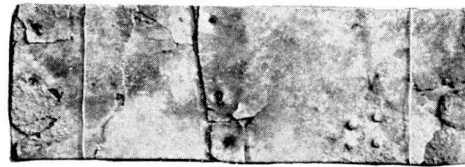
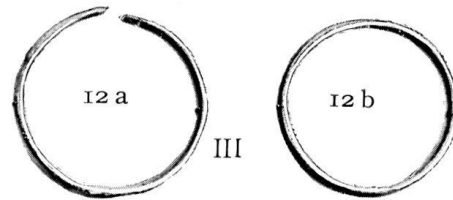
Funde aus dem Grabhügel „Wieslistein“ bei



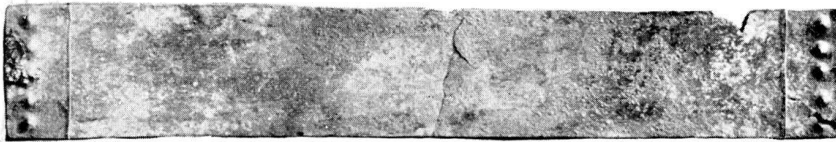
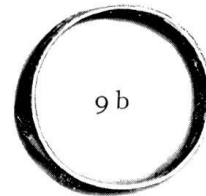
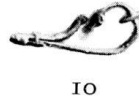
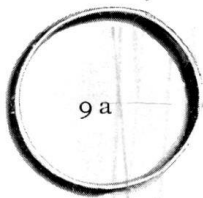
17



XIII



13



8



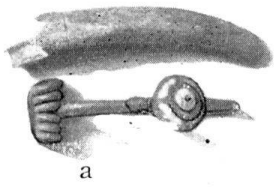
21 XVIII



22 a

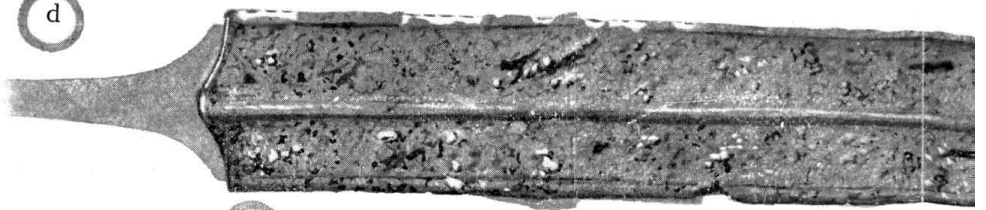
22 b

bei Wangen (Dübendorf, Kt. Zürich).



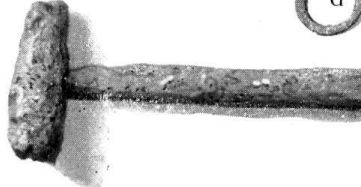
a

d

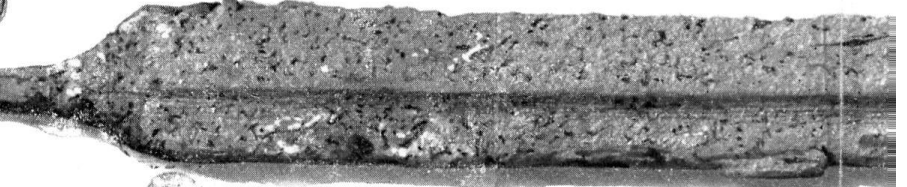


e

Fourreau (face supérieure)

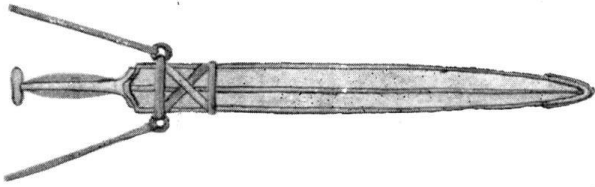


d

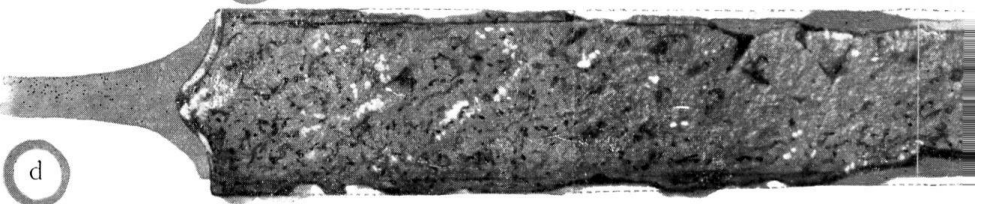


e

Epée c.

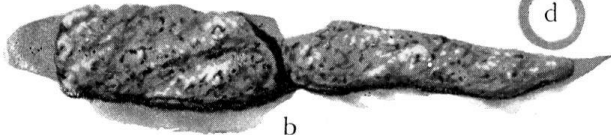


c

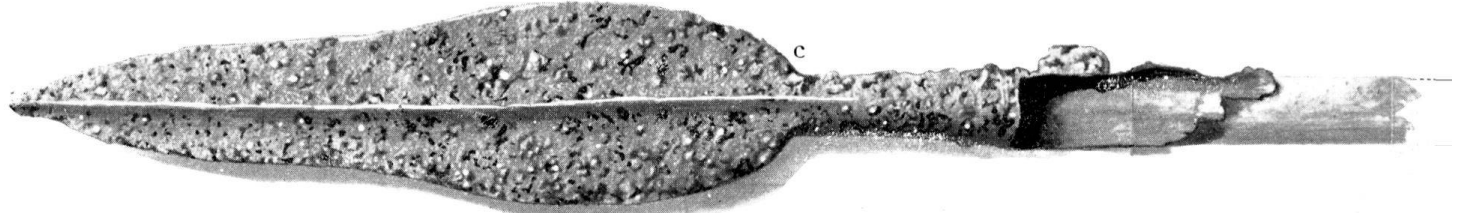


d

Fourreau (face inférieure)



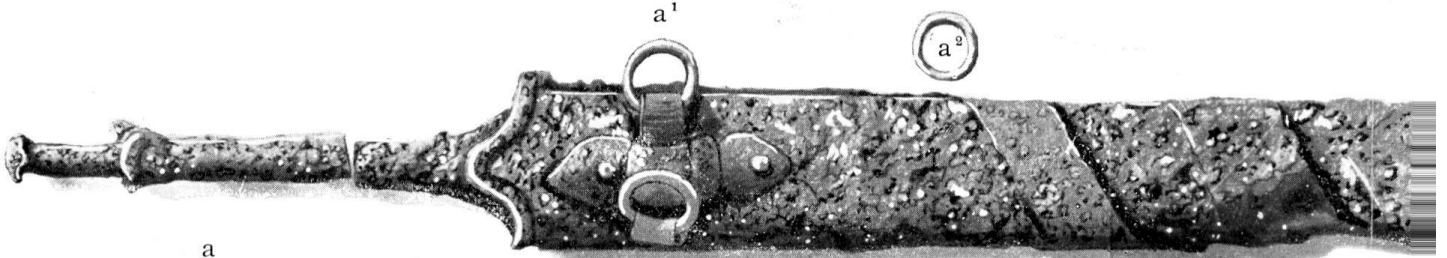
b



c



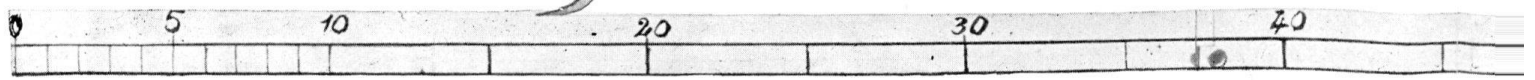
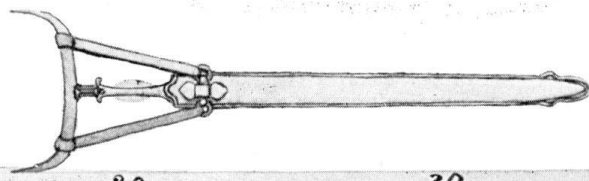
c

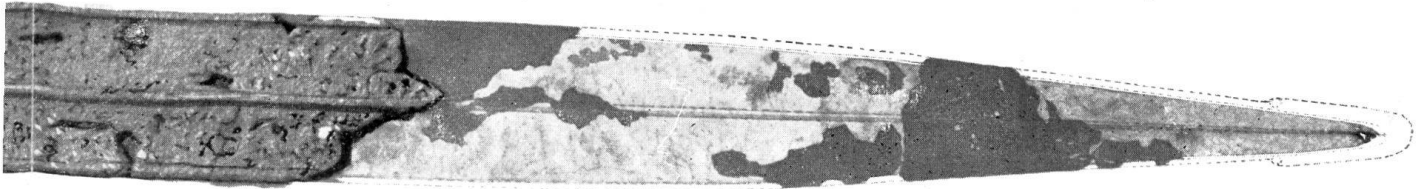


a

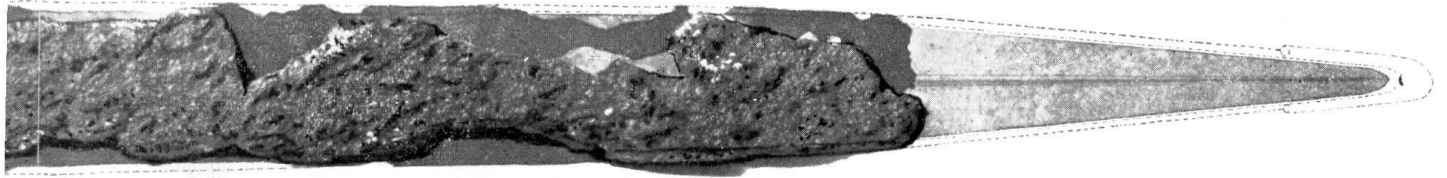
a¹

a²

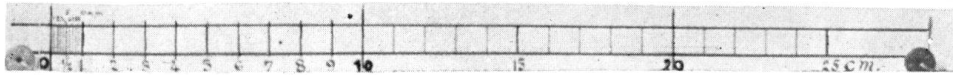




supérieure).

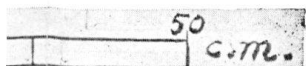
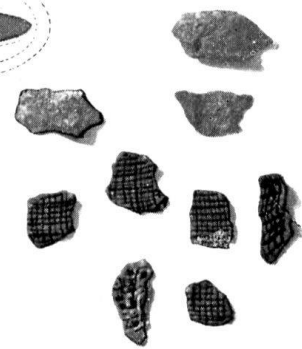
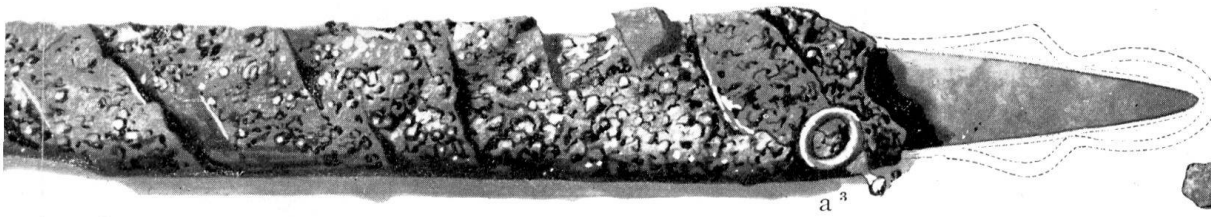
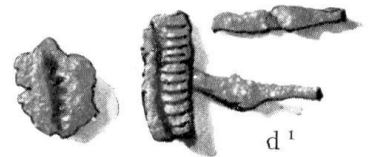
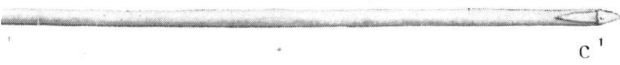
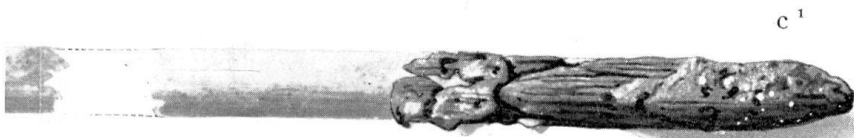


inférieure).



Fragments du Fourreau, restés
adhérents à l'épée.

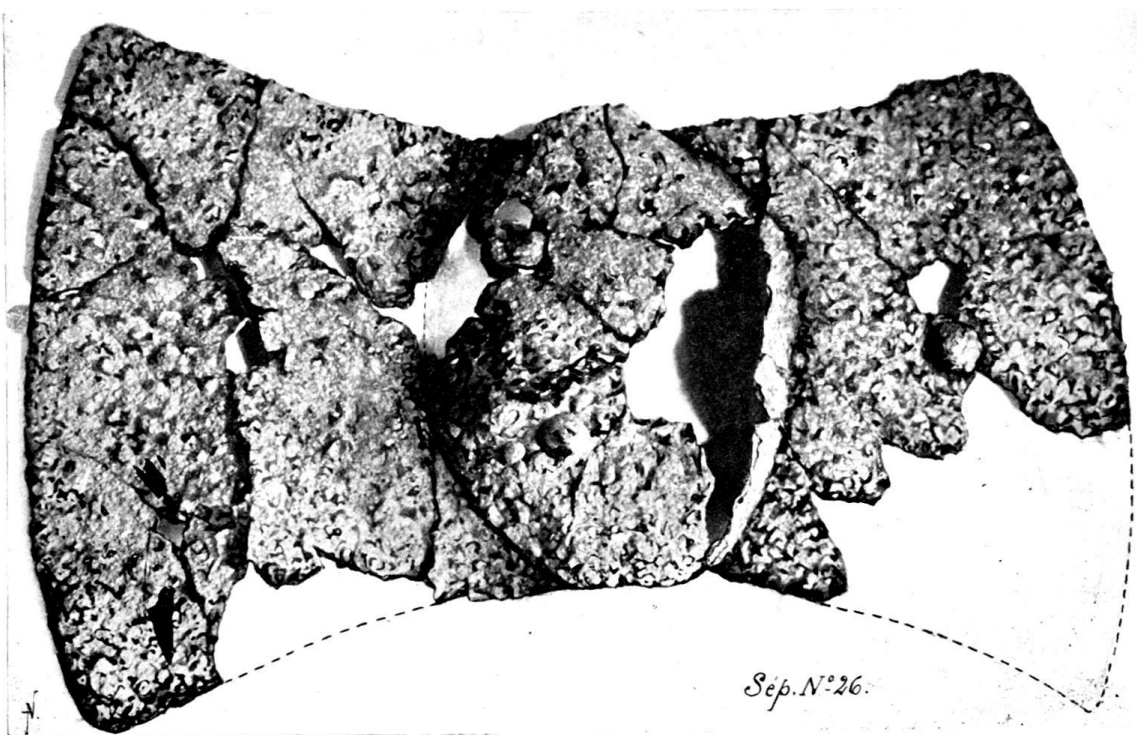
Sépulture N° 26.



Face intérieure.



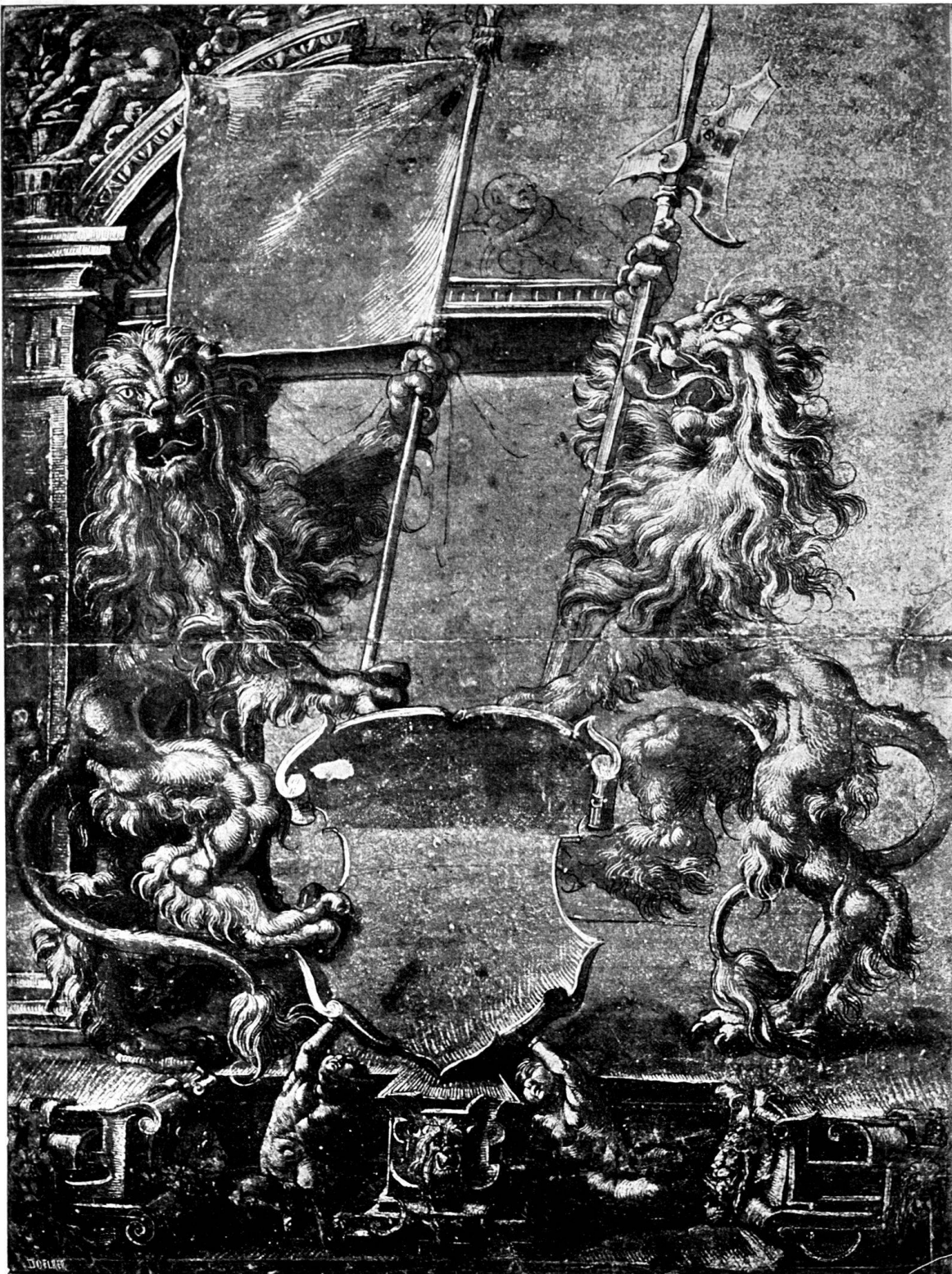
Face extérieure.



Sépulture N° 26. L'umbo du bouclier.



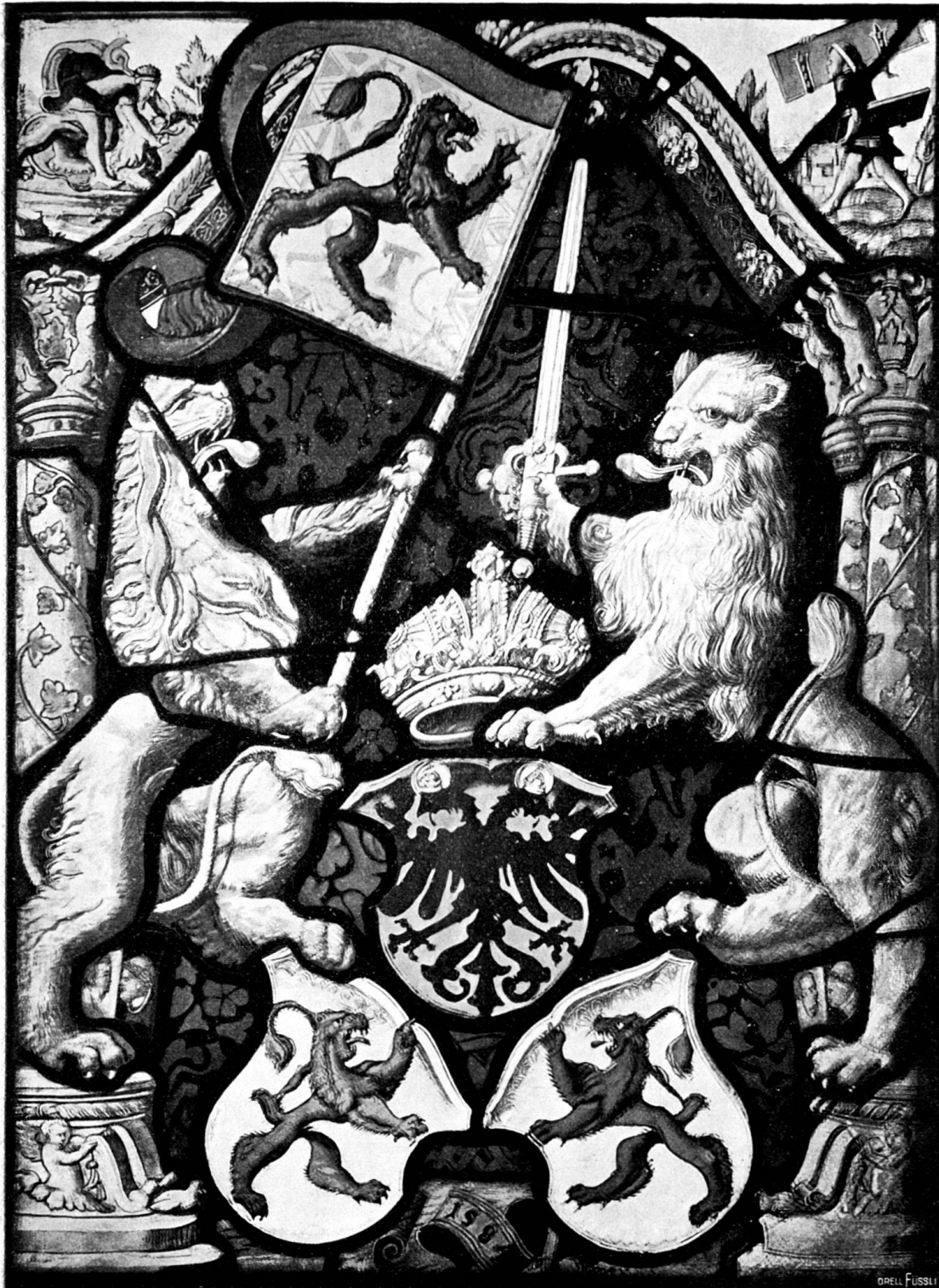
Wappenscheibe der Stadt Zofingen, 1547.



Entwurf zu einer Wappenscheibe in der Wyss'schen Sammlung,
deponiert im hist. Museum zu Bern.



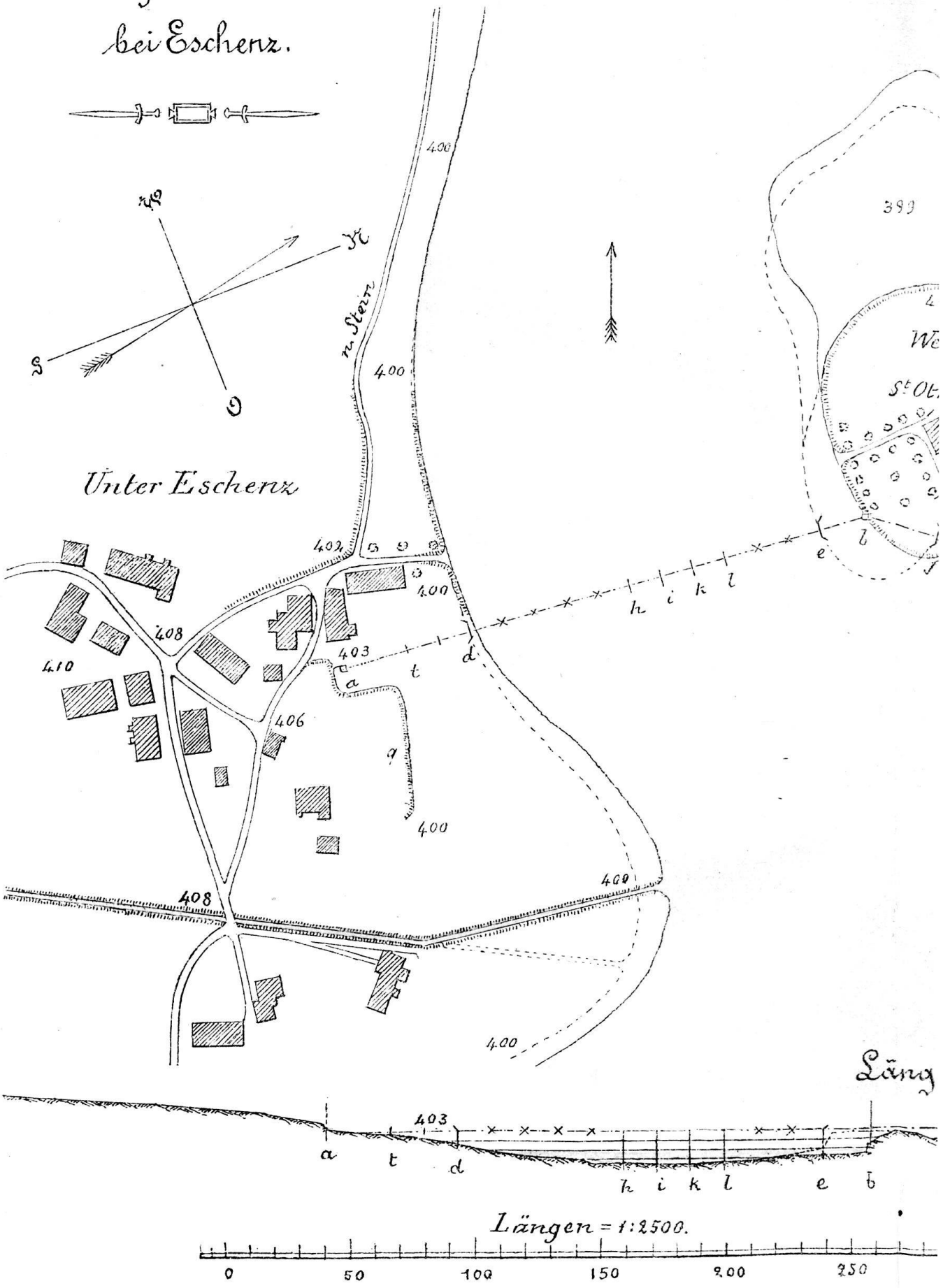
Wappenscheibe der Stadt Zofingen, 1565.



Wappenscheibe der Stadt Bremgarten, 1584.

Ehemalige Körner-Brücke
bei Escherz.

Situat

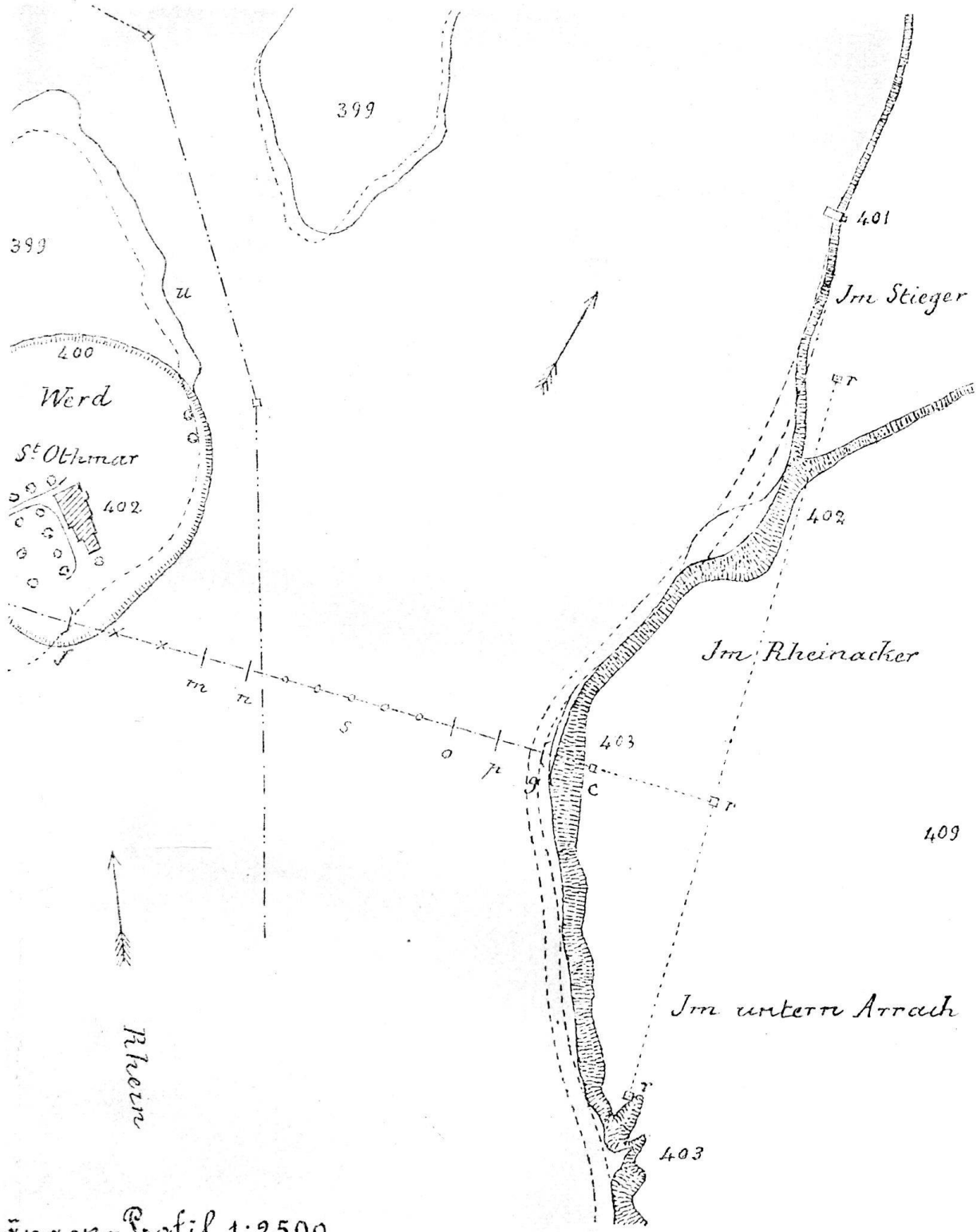


Unter Escherz

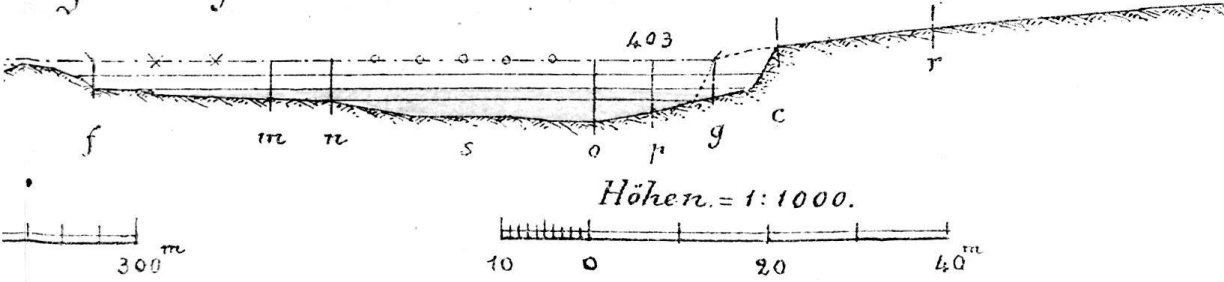
Läng

Alle Rechte vorbehalten.

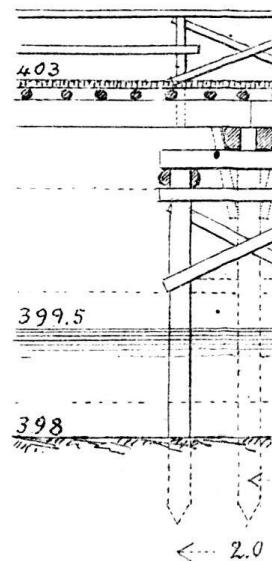
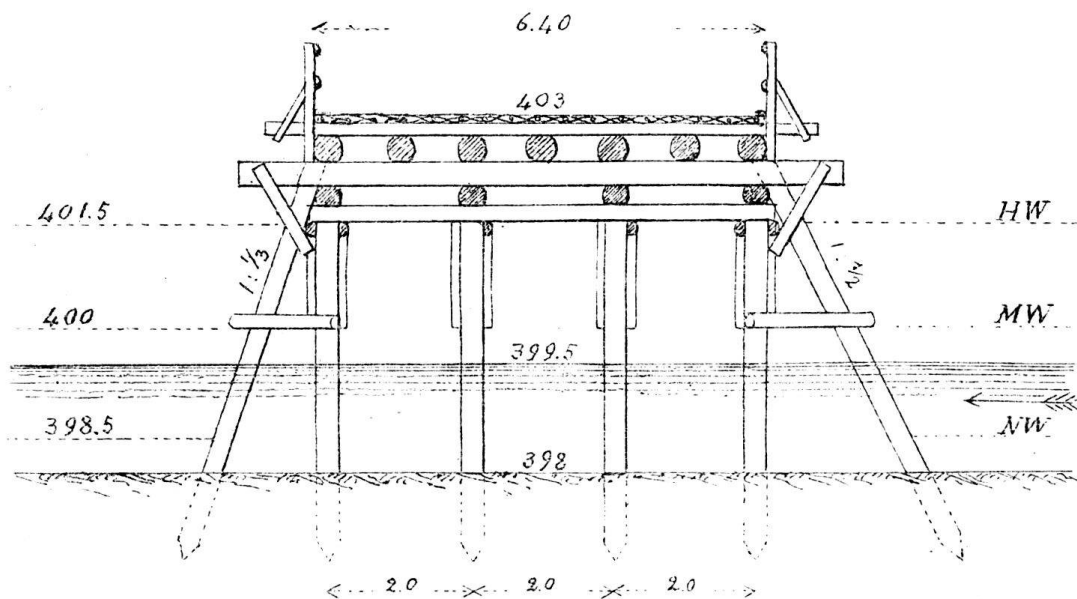
Lageplan 1:2500.



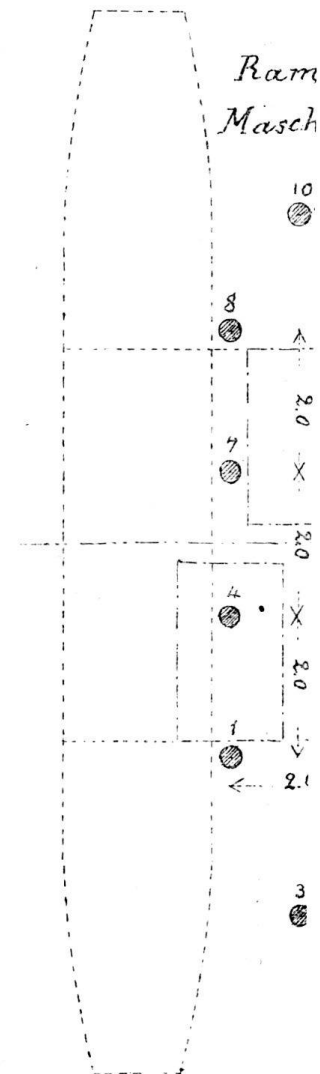
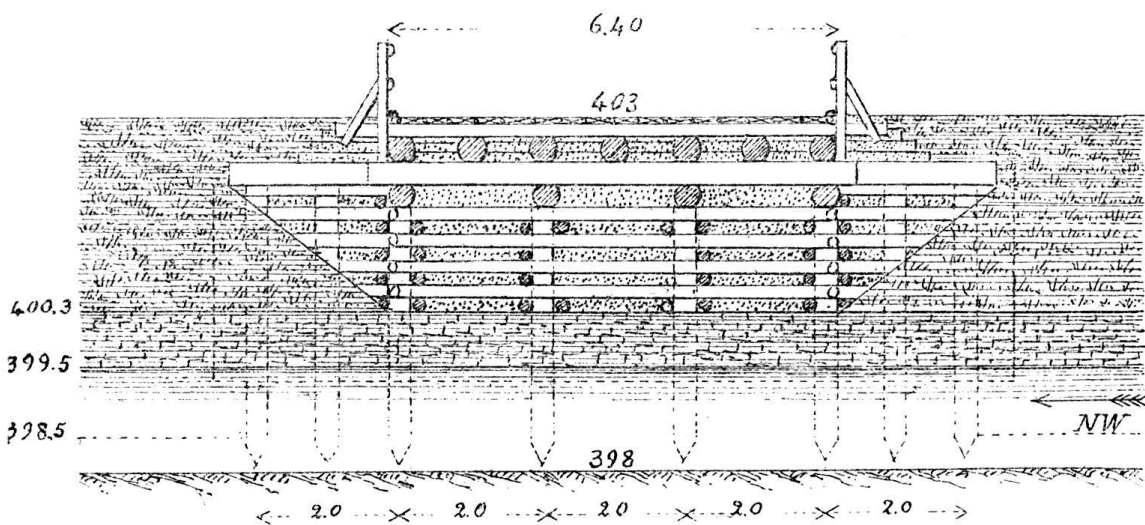
Längs-Profil 1:2500.



Joch



Widerlager

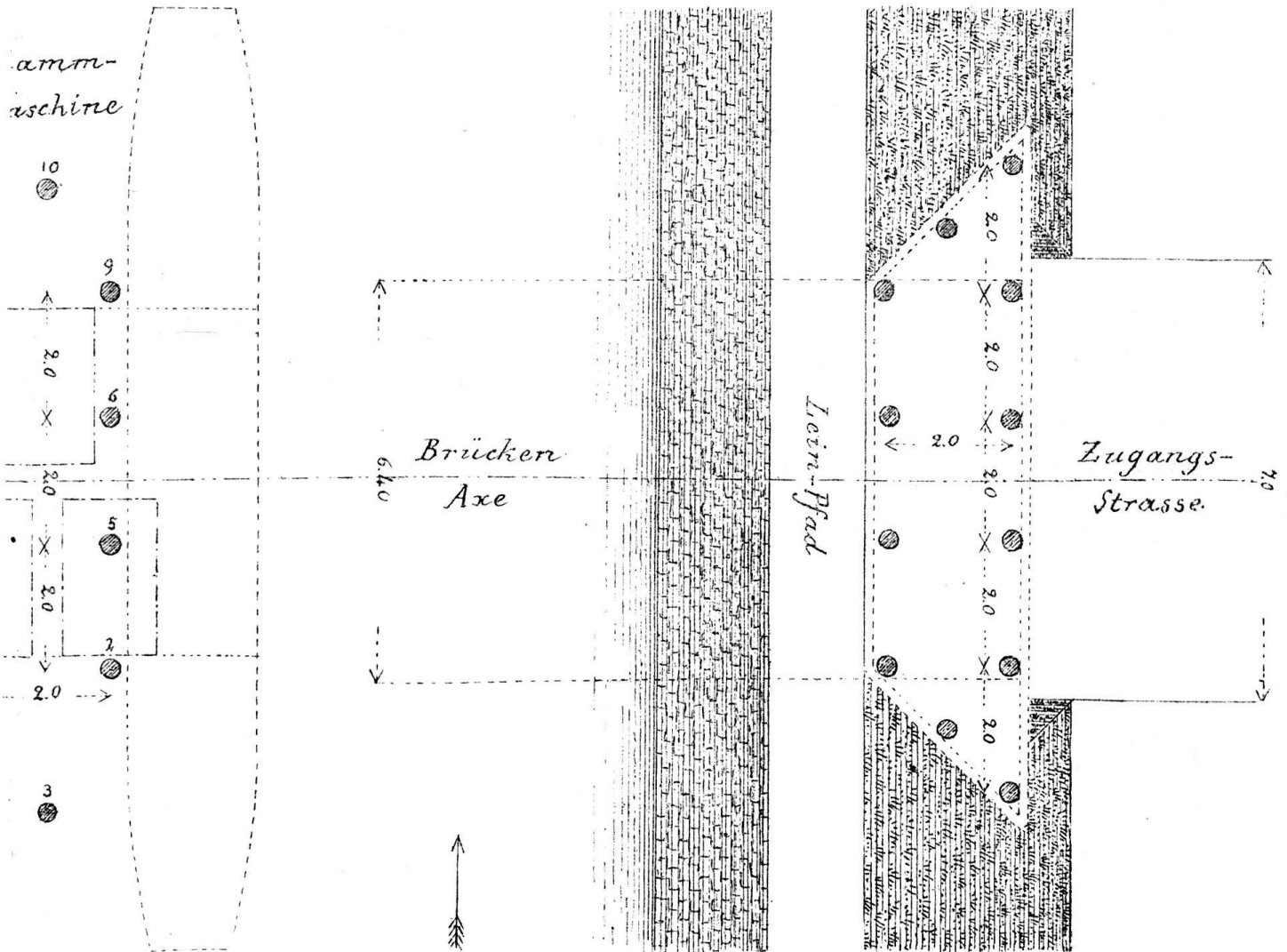
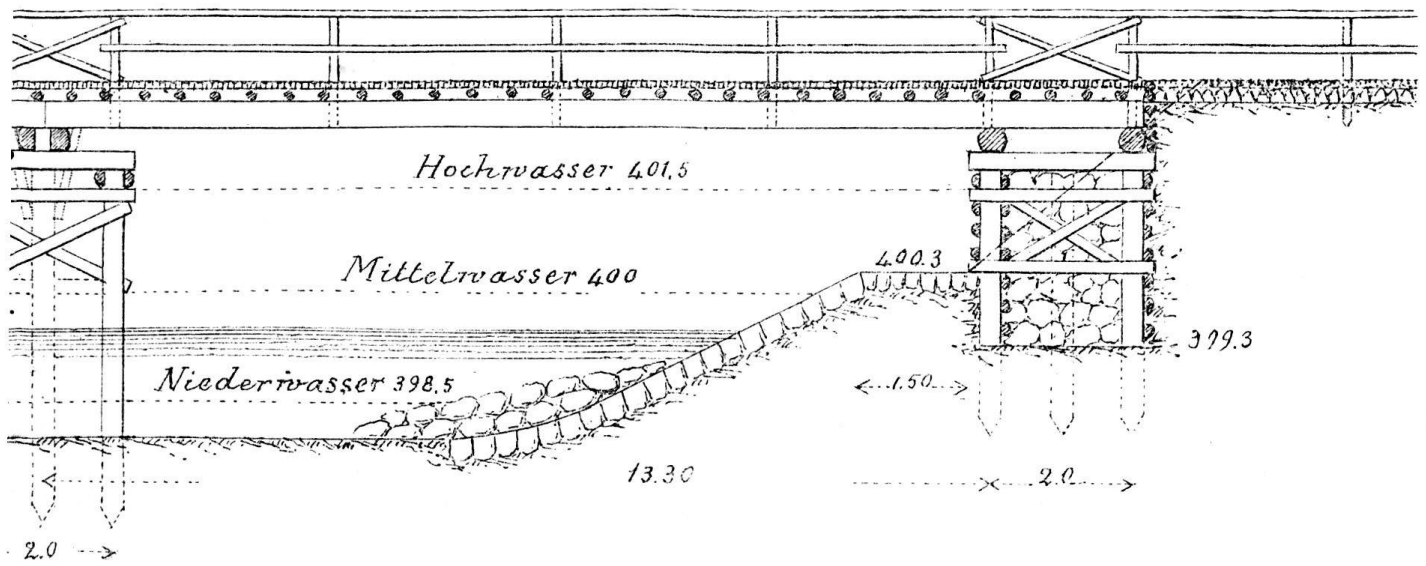


1:125

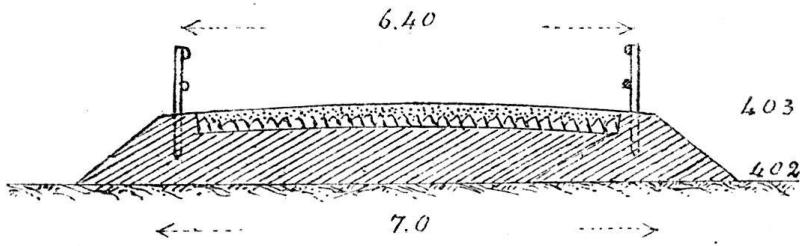


Alle Rechte vorbehalten.

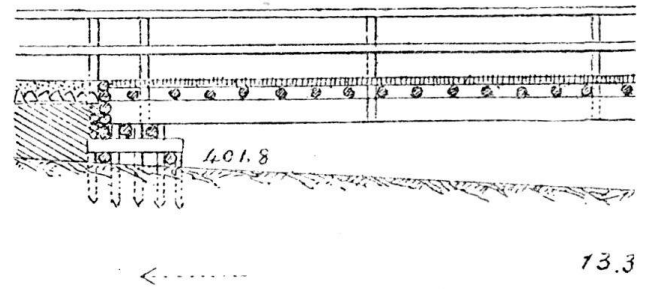
Stahljoch-Brücke



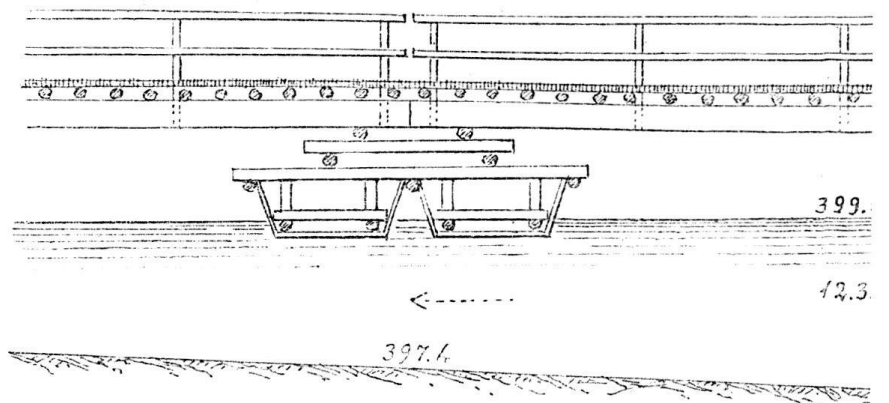
Damm



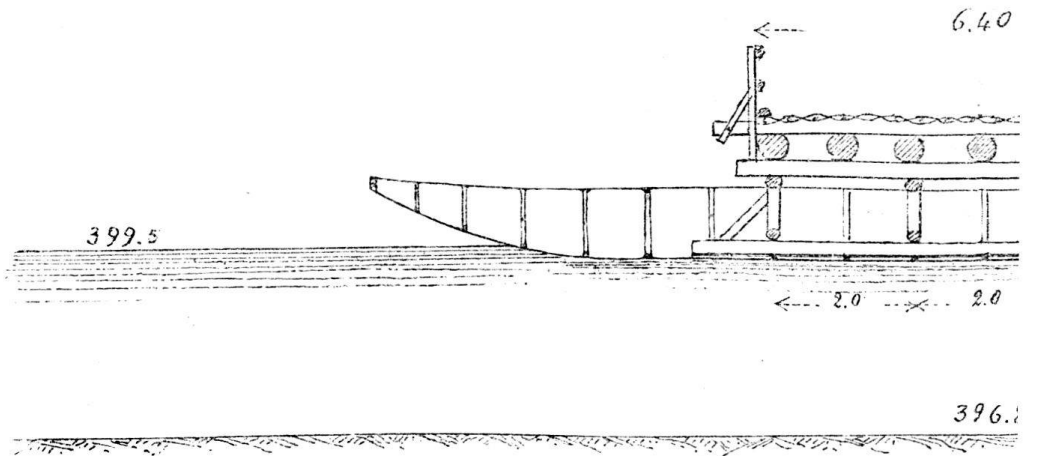
Holzstappe



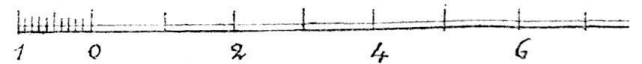
Schiff-D.



Schiffs-Aus

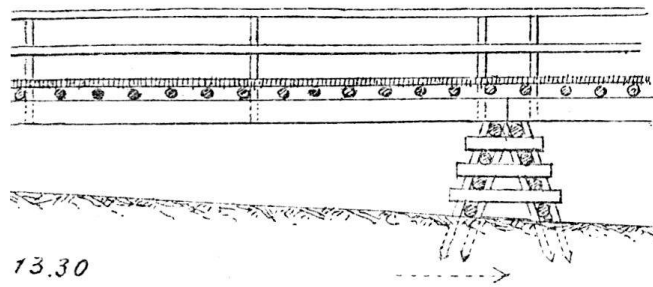


1:15

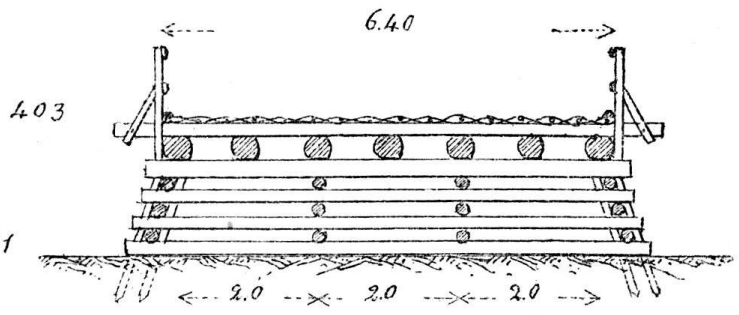


Alle Rechte vorbehalten

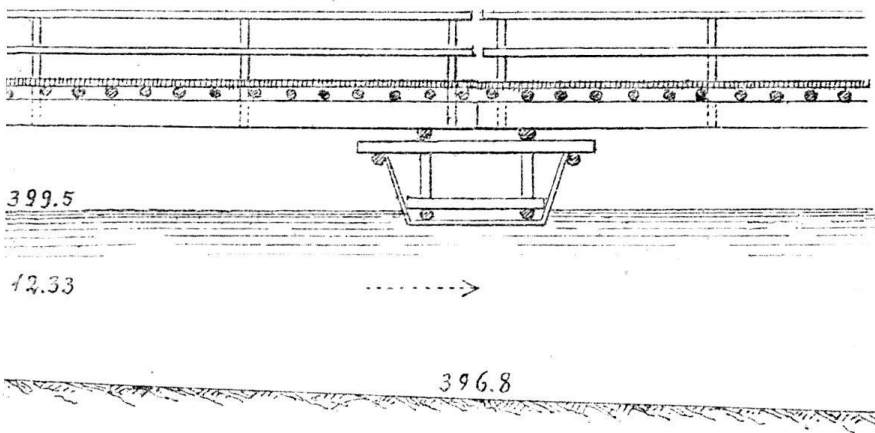
appel-Krücke



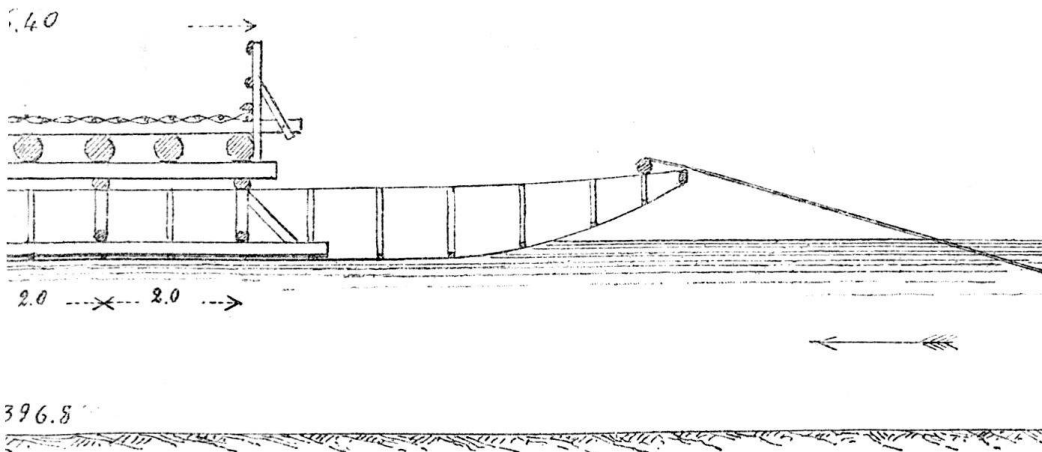
Holz-Stapel



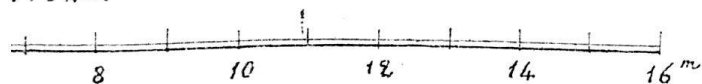
-Krücke



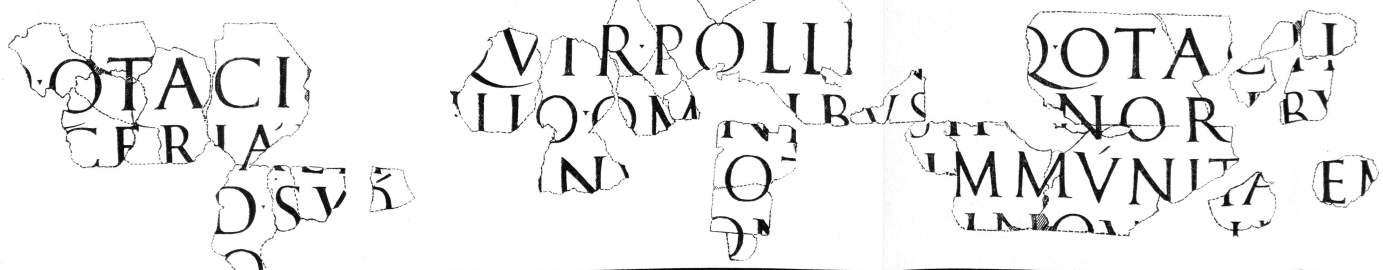
Ausrüstung



1:12.5.



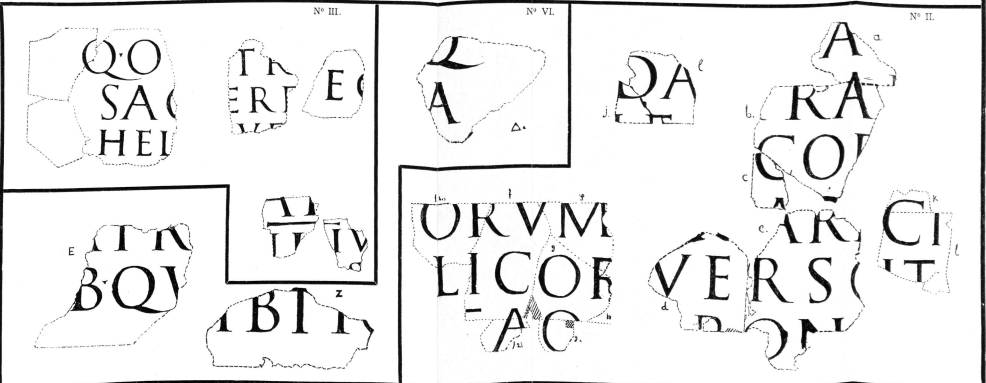
N° I.



N° III.

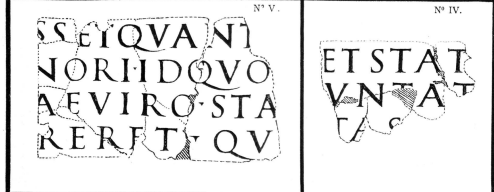
N° VI.

N° II.

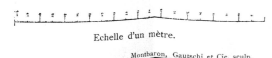


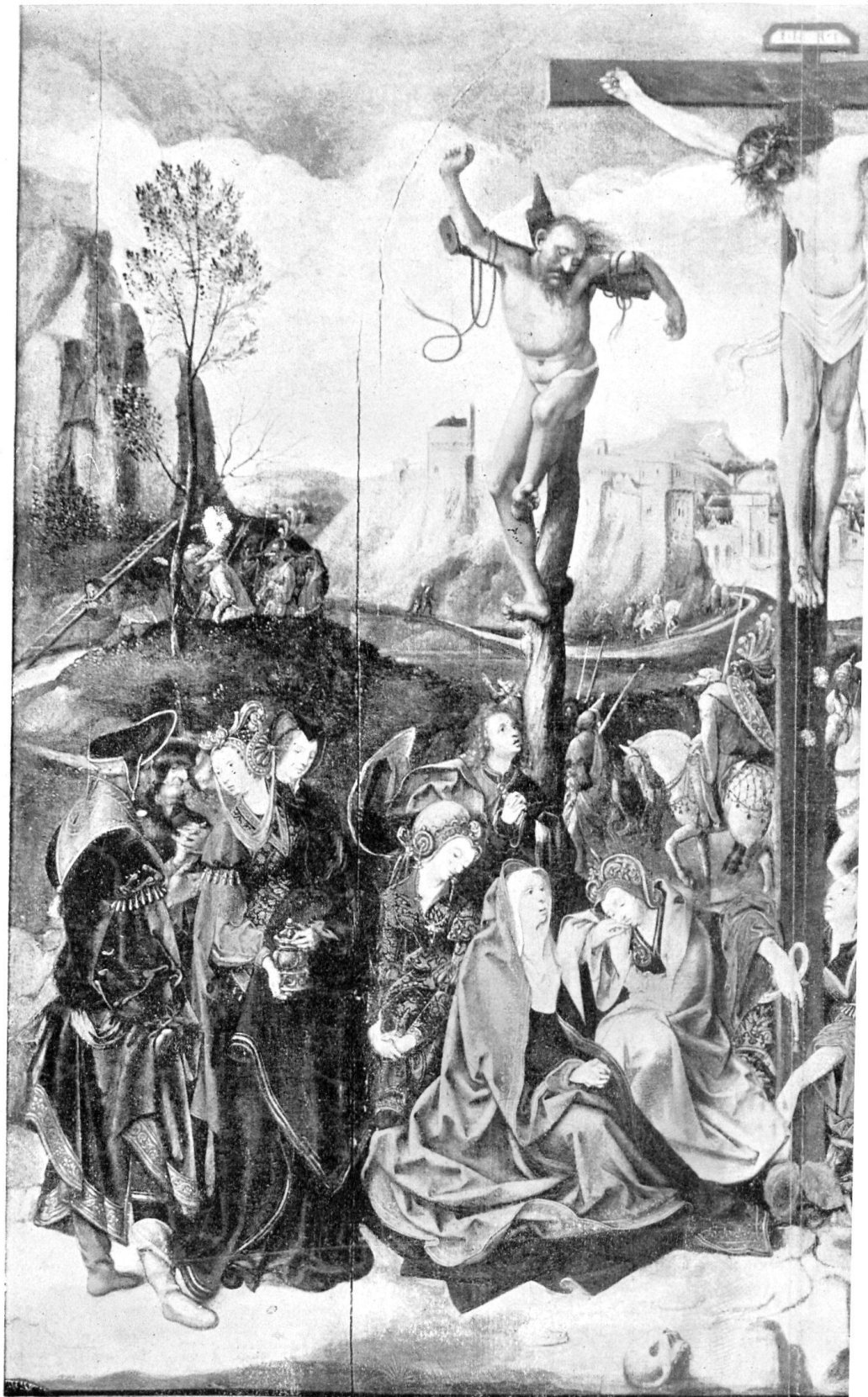
N° V.

N° IV.



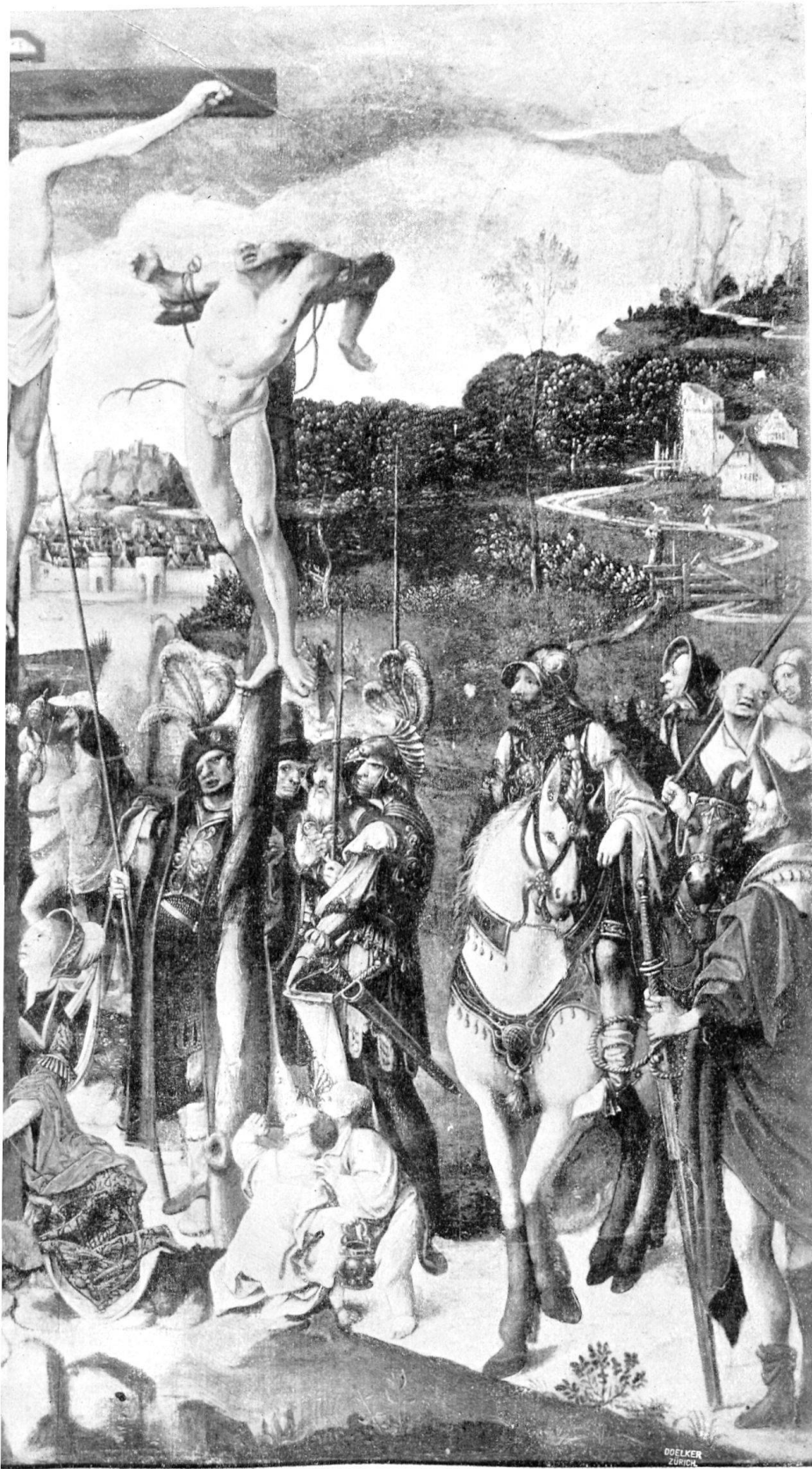
Inscriptions Romaines trouvées à la Conchette Jomini à Avenches 1899—1902
 d'après les estampages de W. Wavre.





Calvarienberg von Corne

Im Besitze von Frau Prof. I



Arnoldus Engebrechtsz.

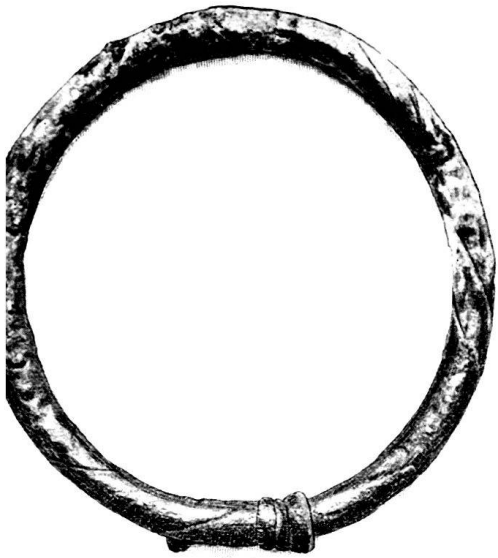
Prof. Bachofen in Basel.



Standbild auf dem Vierröhrigen (ehedem Metzger-) Brunnen
in Schaffhausen.

Sépulture N° 29.

4 avril 1898.



a. Long. max.: 61 m.m.



b. Long. max.: 47 m.m.



c. Long. max.: 45 m.m.



d. Long. max.: 45 m.m.



Grabplatte Ulrich I. von Regensburg.
Schweiz. Landesmuseum.



Festkleid des Andreas Wild von Wynigen aus dem Anfange des
16. Jahrhunderts.

Bernisches hist. Museum in Bern.